

1925-28

ST. HELEN'S HALL

PORTLAND, OREGON

Resident and Day School for Girls

UNDER THE AUSPICES OF

THE EPISCOPAL CHURCH

IN THE DIOCESE OF OREGON



"That our daughters may be as the polished corners of the temple"



"Education is the end to be attained. Instruction is one of the means. Instruction provides the mind with the knowledge of certain things; Education forms at the same time the understanding, the heart, the character and the conscience."

FELIX DUPANLOUP

Board of Trustees of St. Helen's Hall



THE RT. REV. WALTER T. SUMNER, D. D., BISHOP OF OREGON, <i>Chm.</i>	
THE REV. H. H. CHAMBERS	WILLIAM J. HENDERSON, ESQ.
THE REV. CLAUDE BLACK	A. M. ELLSWORTH, ESQ.
THE VERY REV. H. M. RAMSEY, D. D.	CLARENCE PORTER, ESQ.



SAINT HELEN'S HALL was established by the Rt. Rev. B. Wistar Morris, D. D., and opened September, 1869, with Miss Mary B. Rodney as Principal.

In June, 1904, by the request of the Board of Trustees, the Sisters of St. John Baptist undertook the charge of the school.

The work has been steadily carried on since that time, and has met, as all believe, a very real need in the Diocese, and been blessed with increased usefulness.

The aim of St. Helen's Hall is to provide for girls the best possible facilities for complete education. This means not only the cultivation of the intellect and the acquirement of graceful, womanly accomplishments, but also such moral and religious training as shall help the pupils to become pure, true women, with a high, positive standard of Christian living, to bring out in every girl some qualities of leadership, and to develop a right sense of her personal responsibility, so that she may become a power for good in her home, and in the community in which she lives.



St. Helen's Hall is now situated on Thirteenth Street, between Montgomery and Hall Streets. It is a handsome three-story brick building, adapted for the accommodation of about thirty-five resident pupils, and a large number of day pupils. There are excellent class rooms with all the necessary equipment to meet the demands of a modern standardized school, large sunny halls of unusual attractiveness, spacious grounds, and an out-door gymnasium where tennis, basketball, and sports of all kinds are played throughout the year.

The School

The interior administration of the school has been entrusted to the Sisters of St. John Baptist, who have the general superintendence of every department. In secular studies they are assisted by a staff of efficient instructors, college graduates, especially trained for their work.

A daily record is kept of the attendance, scholarship, and deportment of every pupil, and a report of the same is mailed to parents at the close of each quarter.

Pupils failing, after a fair trial, to attain the required standard of scholarship or deportment, will not be retained in the school.

The Sister Superior will always be glad to receive visits from the parents of pupils.

Departments The school consists of three department: a Musical Kindergarten, the Lower School and the Upper School.

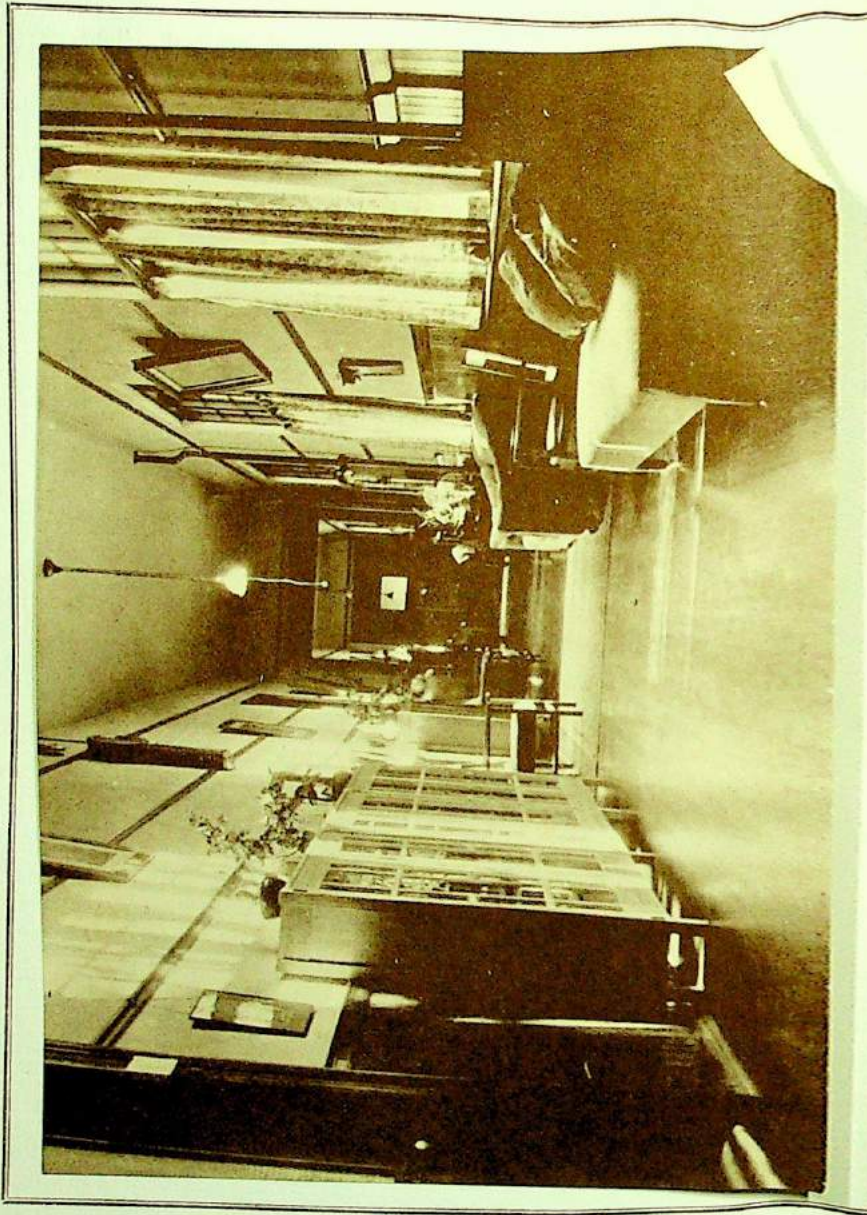
The Lower School includes the six classes covering in English and Arithmetic the same ground as the Elementary public school to the Seventh Grade, but with a broader range of subjects.

The Upper School covers six years and is divided into two courses—The College Preparatory Course and the General Course. Two extra years of either col-

legiate or special work may be taken if desired. The First and Second Forms of the Upper School correspond with the Seventh and Eighth grades of the Public School, and the Third, Fourth, Fifth and Sixth Forms correspond with the four years of the High School work. Beginning with the Third Form, the Upper School is divided into College Preparatory Course and the General Course.

St. Helen's Hall is a standard school of Oregon, and is accredited to all the Western College and Universities. This allows students to enter without examinations. And the work is accepted by the Eastern Colleges according to the new entrance requirements. The passing grade of the School is 75 per cent. The recommending grade of the School to Western Universities is 85 per cent. For entrance to Stanford University on the preferred list, and for the Eastern Colleges an average of 90 per cent is required.

The College Course is especially for pupils preparing for Eastern Colleges. All Eastern Colleges are not uniform in their requirements, but entrance examinations are necessary for all. Therefore it is advisable for students preparing for them, to take their preliminary examinations at the end of the second year, and in some instances one or two may be taken at the end of the first year. This allows a better distribution of the work and lessens the strain of the Senior year.



We urge parents who intend to send their daughters to College, to register them in one or more Colleges or Universities very early in their school life. This step is necessary because of the crowded condition of these institutions, especially so of the major eastern colleges. It is also a wise one because the pupil's preparatory work may then be definitely planned to fit her for whatever college she desires to enter, without undue pressure in her Junior and Senior year.

In the General Course no credit will be given for less than two years' work in any language. German or Spanish may be substituted for French throughout the course. Pupils may enter any class for which they are prepared, but the Diploma of St. Helen's Hall is not given for less than two years' attendance. This course meets the requirements of all Western Universities and Colleges.

The General Course is intended for pupils desiring to lay the foundation of a broad general education, and meets the requirements of those universities and colleges which do not require four years' preparatory work in Latin. In it the time, which in the College Preparatory Course is necessarily spent in Latin, is devoted to Literature, History and Modern Languages. Much of the work is common to both courses, and the standard of thoroughness is the same.

Music, Art and Elocution count as regular elective studies in the General Course. A four-years' course in

any one of these subjects, satisfactorily completed, will be taken into account for graduation.

English The aim in this course is to give pupils thorough instruction in English Grammar and Rhetoric, to enable them to write with ease and accuracy, and to teach them to appreciate what is best in English Literature. Throughout the School the reading matter is carefully selected and in the fourth and fifth years of the Upper School history of English Literature is studied. After this the work consists chiefly in the writing of compositions and the critical study of English masterpieces, especially those required for College Entrance Examinations.

French and Spanish In these courses the aim is to enable the pupil to read the languages at sight and speak and write them easily.

In order to acquire a good pronunciation, the study of French should be begun in the Lower School, the lessons at first being in the form of conversation and easy reading. Afterward grammar and translation are begun. In the last year of the course, French composition, history and literature are studied.

French or Spanish may be begun in the third year of the Upper School and carried to the point required for admission to college or beyond it as may be desired. Attention is paid to pronunciation, conversation

and sight reading, as well as to grammar and translation, and French and Spanish songs and plays form a part of the course.

Latin and Greek "Latin and Greek are not regarded as dead languages except in the sense that all language of books not in our era is dead. They are living in the sense that the English of Chaucer and the Italian of Dante are alive, dead only to those to whom for lack of knowledge they are sealed books."—(Cambridge School Manual.)

A four years' course in Latin is provided, meeting the usual college requirements in Caesar, Cicero, Virgil, Ovid, sight reading, and prose composition, adapted to the new comprehensive examinations of the College Entrance Board.

The course in Greek covers three years, the previous work in Latin having prepared the pupil for its intelligent study. The first year is given to grammar and exercises, the second to Xenophon, the third to Homer. It is desirable, though not essential, that pupils preparing for college should elect Greek as their third language.

History The study of History is begun in the Lower School and continued to the end of the school course. In the College Preparatory Course it is necessarily limited to the Eastern college requirements,

which, however, are constantly increasing both as to quantity and quality. In the General Course five courses of history are offered. The topical method is approved, collateral reading is encouraged. Maps are drawn, and historical geography is held to be an important part of the work. History and English are intimately associated, pupils being required to commit to memory historical poems, and to write compositions on subjects drawn from historical lessons. The school is fortunate in possessing a fairly good, though small, library of history, and literature bearing upon it.

Mathematics "In teaching mathematics the aim is to develop the spirit of enquiry, the habit of accuracy in reasoning, and the love of truth." (Cambridge School Manual.)

The prescribed course comprises Arithmetic, Algebra and Plane Geometry; elective, Solid Geometry and Trigonometry.

Throughout the course original work is encouraged and set rules are avoided. The pupils are encouraged to rely as little as possible upon text books.

Science This department is conducted in accordance with the best scientific methods. Natural History is taught in connection with Geography in the Lower School. In the Upper School the subjects are taken up as indicated in the course of study. Laboratory work is required of all students of science. It is

considered that one or two sciences, each thoroughly studied for not less than one year, will do more for the pupil's intellectual development than a larger amount of superficial work.

Domestic Science **Cookery**—Laboratory and lecture classes in the theory and practice of cookery, together with modification of its laws.

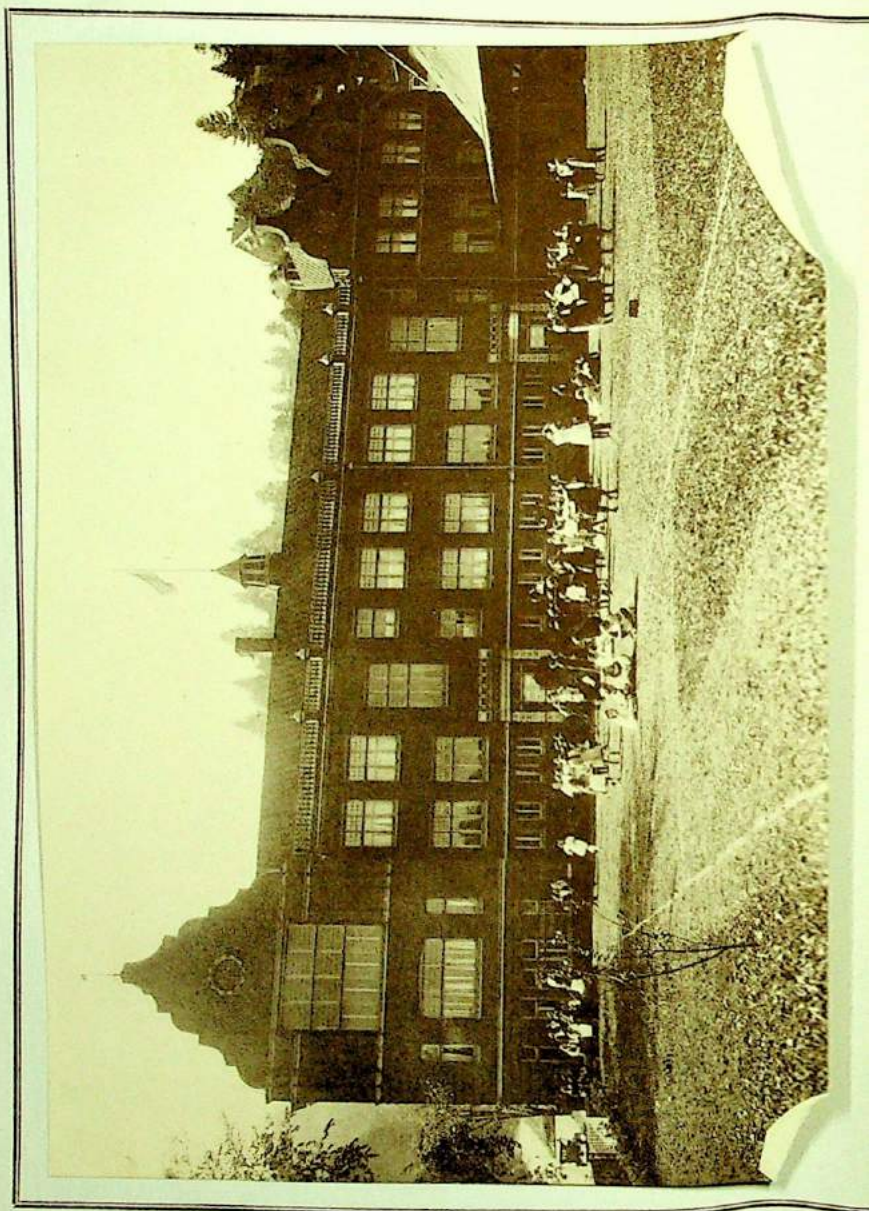
Foods—Their history, care, composition, cost and nutritive value.

Plain Hand and Machine Sewing—Bringing into use the primary stitches with their modifications and combinations, and developing the simpler rules of garment making.

Secretarial Course This course is both cultural and practical as no student is received solely for the business training.

Religious Instruction All pupils receive instruction in Holy Scripture and the History of the Church, and attend the daily services in the Chapel of the School. Resident pupils attend service on Sunday morning in one of the city Churches.

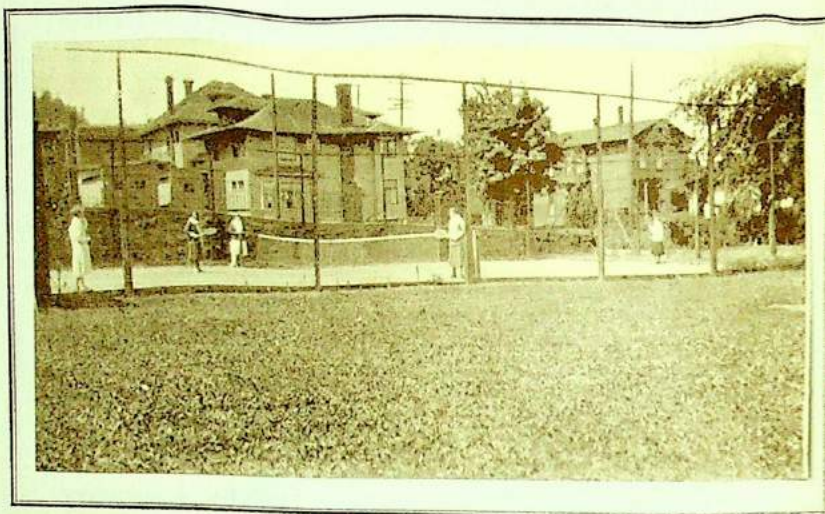
Music Pupils may study music, piano, violin, voice, theory, harmony, etc., in the school. Two half-hour lessons a week are usually given and at least one hour a day must be spent in practice; this time



may be increased according to the ability of the pupil. The technical work is drawn from the best sources, and pieces are selected from the great mass of old and new musical literature, according to the needs of the students. When they are sufficiently advanced, ensemble playing, duos, trios and quartettes may be studied. Pupils are encouraged to attend the concerts offered throughout the season in the city. For advanced students a course in History of Music is offered.

Art The school of the Portland Art Association offers special advantages to those wishing to study Art, and a noted Portland artist is on the teaching staff of the School. The course includes elementary drawing, painting, modeling, sketching, composition, portrait and life study. Advanced students may also join the Art History and the Composition Class. Work in applied design is permitted when the pupils are sufficiently advanced to carry out the principles studied. Art students may also join a class in Arts and Crafts, or may take special training in metal work, wood carving, etc.

Dramatic Expression Short plays or scenes from plays are studied during the year as part of the regular work of the School. This study develops self-expression in simple direct address and ease and grace of manner, through the intellectual understanding and appreciation of good dramatic literature. Several plays are presented before the School during



TENNIS



the year, both in English and French. And at times Latin and Spanish plays have been given.

The School reserves the right to withhold any course not elected by at least three students.

Physical Training Supervised Athletics are emphasized and are under the direction of an instructor of wide experience. Careful attention is given to the physical health of the pupil. Regular out-of-door work is expected of all students. A physical examination of new students is required, that they may be guarded against the danger of overfatigue or too strenuous exercise. This examination may be made by the family physician or by the school physician.

Out-door life is a marked feature of the School, and a unique factor is the open-air Gymnasium where sports are played the entire school year. Ample grounds provide for tennis courts, basket-ball, volley-ball, baseball, and archery in season. And opportunity is offered at a moderate cost for riding and swimming under proper supervision. Interclass and interscholastic basket-ball and tennis-matches are held each year,—not in order to make records, but to encourage the spirit of true sport.

There is a School Athletic Association managed by the students under the direction of the Physical Instructor.

A resident trained nurse has charge of the general health of the pupils.

In all cases of illness requiring special care, a trained nurse is engaged at the expense of the pupil.

Course of Study

Upper School

FIRST FORM

ARITHMETIC

Rapid review of fractions, common and decimal.
Commercial problems and mensuration.
Mental drill a part of each daily lesson.

ENGLISH

A thorough drill in all that pertains to technical grammar, daily throughout the year.

READING AND SPELLING

FRENCH

Elementary grammar, conversation and poetry.

SACRED STUDIES

Bible History.

UNITED STATES HISTORY AND CIVICS

PHYSICAL GEOGRAPHY

PHYSICAL TRAINING

SECOND FORM

ARITHMETIC

A general review of the entire subject.
Practice in rapid calculation, short methods and mental drills.

ENGLISH

Daily composition, literature, etc.

FRENCH

Grammar, conversation, poetry and reading.

LATIN

Elective in this Form.

SACRED STUDIES

Bible History

ENGLISH HISTORY

PHYSIOLOGY

First Semester.

MYTHOLOGY

Second Semester. This course is planned particularly to give the student a thorough background for the English of Form III.

PHYSICAL TRAINING

THIRD FORM
REQUIRED STUDIES

ENGLISH

Composition, rhetoric, literature.

MATHEMATICS

SACRED STUDIES

Bible History

AND TWO ELECTIVES

ELECTIVE STUDIES

FRENCH

SPANISH

LATIN

Grammar, translation and prose.

HISTORY

English History.

SCIENCE

Physiography, Botany, or Domestic Science.

FOURTH FORM

REQUIRED STUDIES

ENGLISH

Composition, rhetoric, history of American literature.

MATHEMATICS

Algebra—(required for College Preparatory Course), or
Plane Geometry.

SACRED STUDIES

Bible History.

AND TWO ELECTIVES

ELECTIVE STUDIES

LATIN

Caesar, grammar, prose composition.

SCIENCE

Physiography or Botany.

FRENCH

SPANISH

HISTORY

Ancient History.

FIFTH FORM

REQUIRED STUDIES

ENGLISH

Composition, rhetoric, history of English literature.

MATHEMATICS

Plane Geometry.

SACRED STUDIES

Church History.

AND THREE ELECTIVES

ELECTIVE STUDIES

LATIN

Cicero, grammar, prose composition.

SCIENCE

Chemistry, Physics or Botany.

FRENCH

HISTORY

Ancient History or Mediaeval and Modern History.

SPANISH

SIXTH FORM

REQUIRED STUDIES

ENGLISH

Composition, rhetoric and literature.

SACRED STUDIES

Church History.

AND THREE ELECTIVES

ELECTIVE STUDIES

MATHEMATICS

Solid Geometry and Trigonometry.

LATIN

Virgil, Ovid, prose composition.

SCIENCE

Physics, Chemistry or Botany.

HISTORY

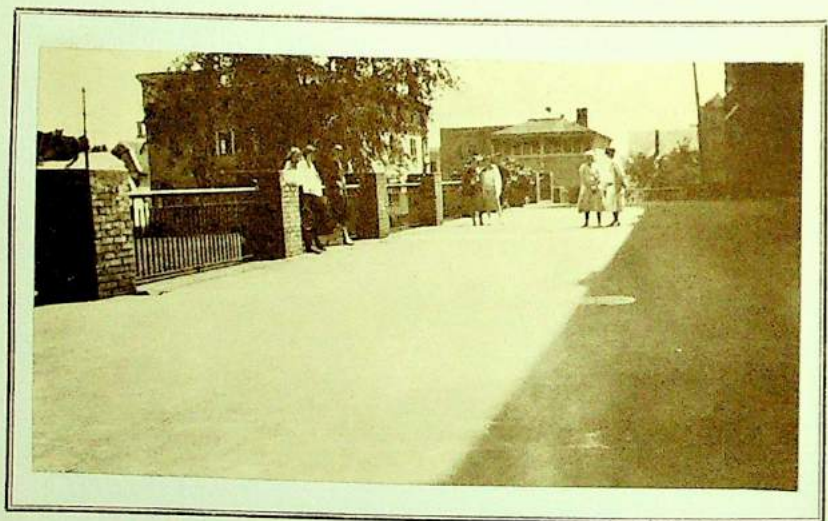
Mediaeval and Modern History, History of Art, or Advanced United States History with special study of the Constitution.

SPANISH

FRENCH



ATHLETIC FIELD



LONG STONE TERRACE OVERLOOKING ATHLETIC FIELD

Course of Study

Lower School

The work of the first six Forms is designed to give a thorough foundation in fundamental processes, methods of study, habits of thoroughness and accuracy, and the beginnings of a cultural background.

From the first, all subjects are carefully correlated and the child's information increased as its experiences and ability justify.

Individual attention is given phonetics and dramatic expression, in the belief that enunciation and self-expression are essential to clear thinking and intelligent appreciation in later work.

REQUIRED STUDIES, FOR ALL FORMS:

Arithmetic
English
Spelling
French

Writing
Sacred Studies
Dramatics
Handicraft

Memory Work

Physical Training

REQUIRED FOR IIIRD, IVTH, VTH AND VITH FORMS:

Geography
History

Civics for VIth Form

The Home

The home life of St. Helen's Hall aims to be that of a well-regulated household, in which the general tone is wholesome and happy. A Sister, assisted by the resident nurse, has the care of the pupils' health. Especial attention is paid to manners and bearing.

A short list of correspondents and visitors, signed by the parents, is required. Letters addressed to others than those on the list will be forwarded unopened to parents or guardians.

During the term no pupil will be allowed to pass a night in town out of the school building except with her relatives or friends approved by the parents with the consent of the Sister Superior. Pupils may not visit anywhere without the consent of parents or guardians. They may receive their friends on Saturdays and on week days out of school hours. Parents and members of the immediate family may visit the pupils on Sunday also. Strangers must bring a letter of introduction from parents or guardian.

The pupils will be allowed to visit on Saturday those friends in the city whom the parents may designate, provided those friends accompany them to and from the school, as they may not go about the city unaccompanied at any time. Those desiring it, have the privilege of doing a limited amount of shopping, or attending places of amusement Saturday afternoon accompanied by the School Chaperon.

Resident pupils will be allowed once in each month to spend Saturday and Sunday away from the school. Pupils whose homes are not in Portland are required to

be resident pupils at the school. The intention is to have the school family consist of earnest girls who will cheerfully adapt themselves to such regulations as are found necessary. No pupil who shows herself impatient of control, or whose general tone and influence is harmful, can be permitted to remain in the school.

Pupils are expected at all times to keep their rooms in order.

A supervised mending class is held Saturday mornings for all pupils with the exception of the Seniors.

Social Life The School activities of the girls have the purpose of training them not only in ease, poise, and grace of manner, but also of developing those qualities of initiative, responsibility, and tact, indispensable to every woman.

A splendid library containing the works of standard authors, is accessible, and a number of the best current magazines are provided for the use of the students.

The Glee Club, Athletic Association, dancing, birthday dinners, various charitable activities, and the school publication, give variety to the school routine.

Teas, recitals, two formal dances for the older girls; and, toward the end of the year, the Juniors' formal luncheon for the Seniors, and the Alumnae Luncheon, give opportunity for more general social life.



ARCHERY



The proximity of the School to the center of the city, enables pupils to attend the opera, symphony concerts, lectures, and plays of educational value.

Scholarships and Honors

A limited number of scholarships are available for girls of ability. Several School honors are awarded each year at Commencement.

The Bishop offers a competitive scholarship prize to the Junior who passes the Eastern College Entrance Board Examinations in six points with the highest average. The Pittock cups for French and English are won by the students receiving the highest grades in the same Board Examinations in these subjects; and the Alumnae Association cup and the Ball cup are given similarly for honors in Latin and Mathematics.

The Alumnae Association pin is given to the Senior who obtains the highest average in studies and deportment in the Senior year; and the students compete yearly for the Medal of the National Society of Colonial Daughters, and for the Lincoln Medal.

There are several cups to be won for Athletics.

First Testimonials—the Highest Honors of the School—are awarded to pupils attaining 99 per cent in conduct for the year, 90 per cent in attendance, 95 per cent in punctuality and order, and an average for the year of 90 per cent in each study.

Second Testimonials are awarded to pupils attaining 98 per cent for the year in conduct, 90 per cent in attendance, punctuality and order, and an average for the year of 85 per cent in each study.

Expenses

The terms for board and tuition are payable: \$425, including advance deposit, on entrance, and the balance, \$375, on January 30th.

Parents and guardians who place pupils in the school are understood to accept these terms and regulations.

Board, Tuition and Laundry (12 pieces weekly), per year.....	\$800.00
Advance deposit (payable with application).....	25.00
Day Tuition, payable one-half on entrance and the other half January 30th.	
Lower School	\$130.00
Upper School	180.00

Extra Expense

MUSIC—PIANO—Two lessons a week. Per year.....	\$100.00—\$150.00
VOCAL MUSIC—Two lessons a week. Per lesson	3.00
VIOLIN	At Teachers' Rates
GERMAN	At Teachers' Rates
ELOCUTION	At Teachers' Rates
DANCING—Term of ten lessons in class	At Teachers' Rates
DOMESTIC SCIENCE—Practical lessons. Per year.....	\$60.00 to \$80.00
ART—Charcoal, Pen and Ink, Oil or Water Colors.	
Per year	At Teachers' Rates
Examination Fees—Per year	\$ 1.00
Secretarial Course Fee—Per year	15.00
Laboratory Fees—Per year	\$5.00—10.00
Graduation Fee (including life membership in the Alumnae Association)	25.00
Tutoring—Per hour	At Teachers' Rates
Chaperonage—Per hour50
A deposit of \$31.00, if use of piano is included, is required for boarding pupils, at the beginning of the school year to meet the following expenses:	
Books and stationery	15.00
Seat in church	5.00
Use of piano	10.00
Library fee	1.00

Day pupils purchase their own books and stationery.

All bills must be paid before examinations are taken, and no Diploma will be given until accounts are settled.

The advance deposit on the board and tuition charges is required to secure a room before the school opens. This will be forfeited in case the application is withdrawn.

The laundry work included in the regular charges does not include white skirts, dresses, or thin waists, but does include one middie a week. Excess laundry is charged at laundry prices.

When desired, pupils may remain at the school during Christmas and Easter vacations, and for that time will be charged at the rate of two dollars a day.

No bills will be paid for pupils, nor money advanced to them, unless a deposit has been made for that purpose, and pupils are not allowed to have running accounts at any store in the city.

A monthly allowance is recommended as tending to give a young girl a proper sense of the value of money and responsibility in the use of it.

Daily Schedule

Rising Bell	6:40 A. M.
Breakfast	7:05 A. M.
Study Hour	7:50 to 8:20 A. M.
Outdoor Exercise	8:20 to 8:40 A. M.
Chapel	8:40 A. M.
Recitations	8:50 to 11:10 A. M.
Recess and Luncheon	11:10 to 11:45 A. M.
Study and Recitations	11:45 to 2:35 P. M.
Refreshments	2:35 P. M.
Recreation and Exercise	2:45 to 4:35 P. M.
Study Hour	4:35 to 5:40 P. M.
Chapel—Tuesday and Thursday	5:40 P. M.
Dinner	6:00 P. M.
Recreation	6:45 to 7:45 P. M.
Study Hour	7:45 to 9:00 P. M.
Lights Out	9:30 P. M.

List of Graduates

ACADEMIC DEPARTMENT

1872

Sally C. Campbell
Mary H. Couch

Margaret R. Gearhart
Alice M. Henderson

Mary Taylor

1873

"The end of learning is to know God"

Laura P. Adair

Iola M. Bristow

Hortense C. Van Fridagh

1874

"Look up"

Anna H. Breck
Kate S. Holman
Sophia Holman

Mary L. Kelly
Alletta T. Lindsley
Mary R. Morris

Mary C. Wilson

1875

Helena G. Beck
Valicia Brown

Elvira L. Crellin
Annie G. De Linn

Alice S. Higgins

1876

"Festina lente"

Carrie Caples
Jennie Caples

Clara A. Humason
Mary Emma Lewis

Mary E. Stone

1877

"Be what you are"

Luella C. Carson
Henrietta E. Failing

Nelly Seelye
Kate S. Storey

Nelly A. Wygant

1878

"Semper sursum"

L. Ellen A. Stephens

Ella L. Woods

1879

Ellen Strong

Caroline Strong

1880

"High be your thoughts"

Frances P. Burnside

Clara C. Munson

Lizzie W. Myrick

1881

"Deserve the best"

Maria F. Clopton

Margaret Green

Elizabeth Irving

Ida K. McKenna

Clara E. Northrup

Mary A. Shindler

Susan Whalley

1882

Virginia A. Whiting

1883

"The readiness is all"

Charlotte E. Crawford

1884

"Follow, follow, thou shalt win"

Alice M. Chance

1885

"Nulla palma sine pulvra"

Emily C. Failing

1886

"For all eternity"

Nellie L. Case

Eugenia Cunningham

Alice B. Crawford

Cornelia Eaton

Jocelyn Foulkes

Oronoco L. Randall

1887

"True to the kindred points of Heaven and home"

Laura Campbell

Henrietta H. Failing

Martha A. Hoyt

Jessie Murch

Clara M. Rosenberg

Dora N. Taylor

1888

Mabel Beck

1889

"Spero"

Ella Hirsch

Mary Goldsmith

1890

"Non stando sed ambulando"

Lucretia Allen
Elizabeth M. Cadwell
Mary J. Charman

Elizabeth A. Lambert
Henrietta Sinsheimer
Jane Whalley

1891

Mabelle C. Dent
Caroline W. Flanders

Julia Hamilton
Emma E. Wintler

1892

"Hodie"

Alice C. Failing
Ella Jordan

Hattie M. Newman
Kate Wintler

1893

"Nulla dies sine linea"

Louise F. Kuebli

Charlotete Whalley

1894

Meta Allen
Kulla C. McFadden

Anna B. Scott
Kathleen Seeley

1895

"Non sibi"

Stella H. Spedden

Myrtle L. Smith

1896

"L'Esperance"

Alice C. Andrews
Idalia J. Benson
Emma L. Booth
Amy J. Bratton

Octavia Drake
Lena A. Eddy
Edna Haight
L. Estelle Killin

1897

"Per angusta ad augusta"

Katharine F. Failing
F. Bylieu Lounsbury

Dorcas Merrill
Ida Thompson

Aileen Webber

35

1898

"Nulla vestigia, retrorsum"

Stella Alexander
Frances Jacobs
Marion Bauer

1899

"Vincit qui se vincit"

Rosa Josephson
Ruth Loveridge
Charlotte Ohle
Lillian Wollenburg
Natalie Wollenburg

1900

"Facta non verba"

Helen Ramsdell
Sally Powell

1901

"Viam aut inveniam aut faciam"

Katherine S. Arnold
Hilda Hexter
Frances Lanc
Eula McCully
Thora Poulsen
Fanny Swartz

1902

"Praesis ut prosis"

Marion Gray
Muriel Weatherdon
Ethelwynne Harris

1903

"Probitas verus honos"

Elizabeth Stewart

1904

"Esto quod esse videris"

Susan Genevieve Bellus
Gladys Atkins Farrar
Rena Kuhn
Elizabeth Blodgett Lord
Willeta Leezer
Mabel Alice Nissler
Kate Esther Ramsdell
Josephine Esther Smith
Miriam Van Waters
Marcia Wade
Margaret Sophia Walter
Sara Jean Winans

1905

"Surge illuminare"

Byra Abbott
Eva Bailey
Clara Boot
Helen Coldwell
Alice Collier
Catherine Emmons
Gertrude Gray
Jessie Grimmett

Dorothy Langfitt
Myra Loveridge
Alice McCormac
Clara MacEwan
Margaret Morrison
Carrie Short
Maud Van Dusen
Winifred Van Dusen

1906

"Lux et veritas"

Elizabeth Armstrong
Kathleen Armstrong
Arline Davies
Janet Gray

Helena Hughes
Isabel Hughes
Gertrude Jones
Genevieve Sengstacken

1907

"Fortiter, fideliter, feliciter"

Marguerite Crosby
Louise Emmons
Hazel Ferris
Hilda Hagedorn
Jessie Hale

Mary Hewitt
Hazel Robb
Mercedes Sims
June Sterling
Hazel Tichner

Evelyn Wilson

1908

"Posside sapientiam"

Margaret Boot
Shanna Cumming
Flora Davis
Leonide Fleury
Ione Lambert

Gwendolyn Llwyd
Maude Meenach
Alta Ring
Ethel C. Towers
Olive Wilson

1909

"Labore et honore"

Elizabeth Blair
Vieve Cecil
Frances Clay
Margaret Coldwell
Grace Collier
Claudia Fliedner
Dorothy Gilbert

Daisy Green
Clarabel Grim
Stella Jones
Emmeline Powell
Lucy Powell
Ellen Thielsen
Helen White

Roxana White

1910

"Lactus sorte mea"

Margaret Leslie Emmons
Margaret W. Hewett
Clementine Lambert
Juanita Matlock
Hazel Morrow

Marguerite Rohse
Anna Streiff
May Walther
Helen T. Watt
Helen L. Whitney

1911

"Veritas vincit"

Mary Blossom
Lora Cumming
Cassie Hiller

Dorothy Huber
Fern Hutchinson
Winifred London

Gene Spencer

1912

"Surgamus et aedificemus"

Manuella Briggs
Elizabeth Darch
Elva Gaskell
Ruth Hall
Genevieve Hailey
Marie Hanson
Olive Harris
Evelyn Hitchcock

Geraldine Horn
Verna Menefee
Lorraine Percival
Eola Richards
Lucy Simpson
Edith Slusher
Alice Thurston
Lucrece Wood

1913

"Ad ultimum summis"

Jane Auterson
Anna Barker
Lorraine Bean
Ruth Camp
Marguerite Emerson
Alice Fox
Katharine Graham

Elizabeth Jones
Doris Smith
Ruby Steiwer
Ruth Stryker
Constance Taylor
Katherine Tooker
Marian Van Horn

Julie Whitmer

1914

"Attingit quod petit"

Adele Bray
Dorothy Durham
Evelyn Farrar
Esther Gilpin

Beatrice Stone
Susan Truby
Elsie Walker
Adele York

Helen Kelly

1915

"Humanitas, sapientia, virtus"

Anna Boynton
Myla Chambers
Dorothy Condon
Alice M. Dabney
Alma A. Houser
Martha Hoyt

Jean Macfarlane
Evelina Magruder
Margaret Platt
Amy G. Robinson
Beatrice M. Thurston
Ethel M. Waite

Margaret J. Welch

1916

"Dum spiro spero"

Ethel M. Malpas

1917

"Kata dunamin"

Consuelo McMillan
Nadine Caswell
Dorine Wyld

Susan Green
Marguerite Bergh
Adeline Kendall

Lucile Brown

1918

"Pi alpha theta"

Eleanor Cram
Hazel Haines
Inez Chambers
Helen Ballard

Marjorie Campbell
Miriam Flagler
Helen Von Cleff
Beatrice Olson

1919

"Carry on"

Lucile Hutton
Mary Greenlee
Faith Newton

Margaret Johnston
Barendina Gardener
Mary Helen Spaulding

Ella Deering

1920

"The Lord is my strength, whom then shall I fear"

Frances Baker
Suzanne Caswell
Eleanor Simpson
Jessie Smith
Harriett Breyman
Thelma Aaland
Doris Henningsen
Marion Jenkins

Elizabeth Kelly
Virginia Thatcher
Philena Bartlett
Grace Caviness
Hazel Fairservice
Hylah Fraley
Alice Prindle
Vernita Watts

Ruth Jenkins

1921

"Onward forever"

Evelyn Thatcher
Adalyn Mayer
Dorothy Carpenter
Janet House
Janice Parker
Edna Burton

Elva Mervy
Florence Kuhn
Edith Chandler
Thyra St. Clair
Elizabeth Patton
Helen Winter

Laura Reed

1922

"Noblesse oblige"

Frances Spaulding
Helen Van de Water
Virginia Pittock
Margaret Boyer
Helen Ernst
Catherine Overbeck
Leah Rose
Frances Rose
Harriette Walters
Marion Farrell
Frances Cornell
Margaret McAllister
Charlotte Malboeuf

Muriel Withers
Catherine Hay
Elizabeth Holbrook
Esther Benson
Virginia Edwards
Annabelle Bates
Janet Griffith
Frances Hyland
Marguerite Pendergrass
Helen Parker
Helen Holmes
Medora Howard
Philippa Sherman

POST GRADUATE

Harriette Breyman

1923

"Nil desperandum"

Anne Wentworth
Bess Allen
Pearl Biehn
Elizabeth Edwards
Consuelo Hamer
Gertrude Ireland
Dorothy Haradon
Virginia Hull

Lillian Luders
Jean Muir
Margaret Newbegin
Florence Niles
Hazelmary Price
Willetha Ritter
Dorothy Scarborough
Margaret Spencer

Frances Weller

1924

"Non nobis solum"

Edna Ellen Bell
Elizabeth Bradley
Irene Brix
Susabeth Bruce
Elsie Colvin
Robertta Douty
Virginia Fenton
Mary Ray Fraley

Katharine Hart
Isobel Johnson
Annie Ellen LaMoree
Dorothy Mielke
Isabel Schetky
Mildred Vaughan
Florence Volstorf
Catherine West

Ruth Wonacott

1925

"Esse quam videri"

Elbertine Adams
Cecilie Applegath
F. Lillian Bennett
Matilda K. Bowman
Julia M. Bradley
Analene R. Cohen
M. Lucielle George
F. Gwendolyn Hall
Edythe L. Hartley
Florida R. Kissling
Virginia C. Kissling
Jane Knapp
Myrna L. Lamser
Irene I. Mackay
Donna A. Magnuson

Marjorie M. Mariner
Catherine C. Martin
Catherine L. Mayhew
Evelyn M. Meyer
Margaret L. McKern
Velma F. Payne
Lilias E. Peltier
Marjorie Pittock
Celeste K. Proctor
Helen B. Roberts
Mayanna K. Sargent
Elizabeth R. Sewall
Dorothy L. Statter
Darrell D. Torrey
Doris E. Thompson

1926

"Vincit qui se vincit"

Helen Abbott
May Belle Allen
Betty Allyn
Muriel Barde
Nancy Bonham
Margaret Brandes
Nancy Carpenter
Nancy Chipman
Virginia Coke
Caulean Creath
Helen Dunn
Mildred Gibson
Margaret Hall
Ardelia Haradon
Helen Hembree
Phyllis Henningsen
Louise Hosch
Cornelia Ireland
Dorothy Lawrence
Elizabeth Martin

Dorothy Mautz
Katherine Moore
Margaret McCall
Elizabeth McIntosh
Betty Parry
Helen Peters
Naida Plummer
Eleanor Poorman
Mary Mildred Reynolds
Dorothy Sandstrom
Vivian Sandstrom
Julia Smith
Helen Spencer
Isabel Starr
Marion Statter
Elizabeth St. Clair
Elaine Strowbridge
Dorothy Taylor
Catherine Van Schuyver
Eleanor Williams

Maria Wilson

COLLEGIATE DEPARTMENT

	1909	
Louise Cecil		Adele Dyott
	1910	
Nellie Lathrop		Myrtle Margaret Smith
	1911	
Mary Bel Hancock Helen Holbrook		Carrie Paige Lucy Powell

DEPARTMENT OF MUSIC

	1907	
Mary Maud Carlisle		Ada West
	1909	
	Gwendolyn Llwyd	
	1911	
	Margaret Coldwell	
	1912	
Dorothy Vedder		Manuella Briggs
	1914	
	Anna Barker	

KINDERGARTEN TRAINING CLASS

	1902	
Mina Nesbit		Edith Habersham
	Ruth Gilman	
	1903	
Augusta Humphreys		Mary Boys
	1904	
Bessie M. De Bevoise Lillian V. Jameson		E. May Penwill Helen M. Stafford
	1905	
Gertrude Hutchinson		Ethel Walter

1906

Elsie Backus
Katharine Gilbert
Gertrude Gill

Ethelwynne Harris
Sara Leadbetter
Rachel Smith

1907

Helen Booth
Helen Coldwell
Beulah Duncomb

Mary McIntosh
Josephine Schell
Pearl Schell

1908

Clara Thompson

Jessie Tupper

1909

Ethel Billings

Myrtle Stock

Rebecca N. Hatton

1910

Leonide Fleury
Jessie MacDonald

Carroll McCollum
Ermine Owen

1911

Helen Gannett

1917

Jane Lowe
Marie Brady
Esther Merrill
Helen Block
Katherine Hervey

Florence Kiehle
Bertha Palmer
Jenet Handcock
Loleta Holmes
Anna Pauley

1918

Mildred Arey
Genevieve Drew
Louise Gilbert
Dorothy Goldsmith

Helen Halgren
Abby Lyman
Elsie Moon
Lucy McCourt

Helen Zimmerman

