



The Scintilla

JUNE ★ NINETEEN THIRTY-NINE





The Scintilla

VOLUME VI 1939

ST. HELEN'S HALL
JUNIOR COLLEGE

Portland, Oregon

« »

GENERAL SUPERINTENDENCE OF
SISTERS OF ST. JOHN BAPTIST

Pictures

Graduation
Deacon Studio

Group
Baker Studio

•

Publishers

Irwin-Hodson Co.

F O R E W O R D

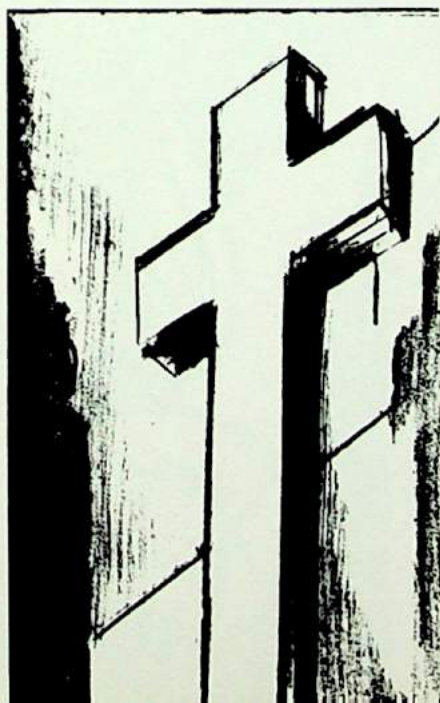
With each turn of the leaves of this Scintilla, there follows our earnest desire to recall to you, the mirrored reflections of the time and events which took place in the lecture-rooms, the chapel, the campus and Everglades, at this junior college for young women.

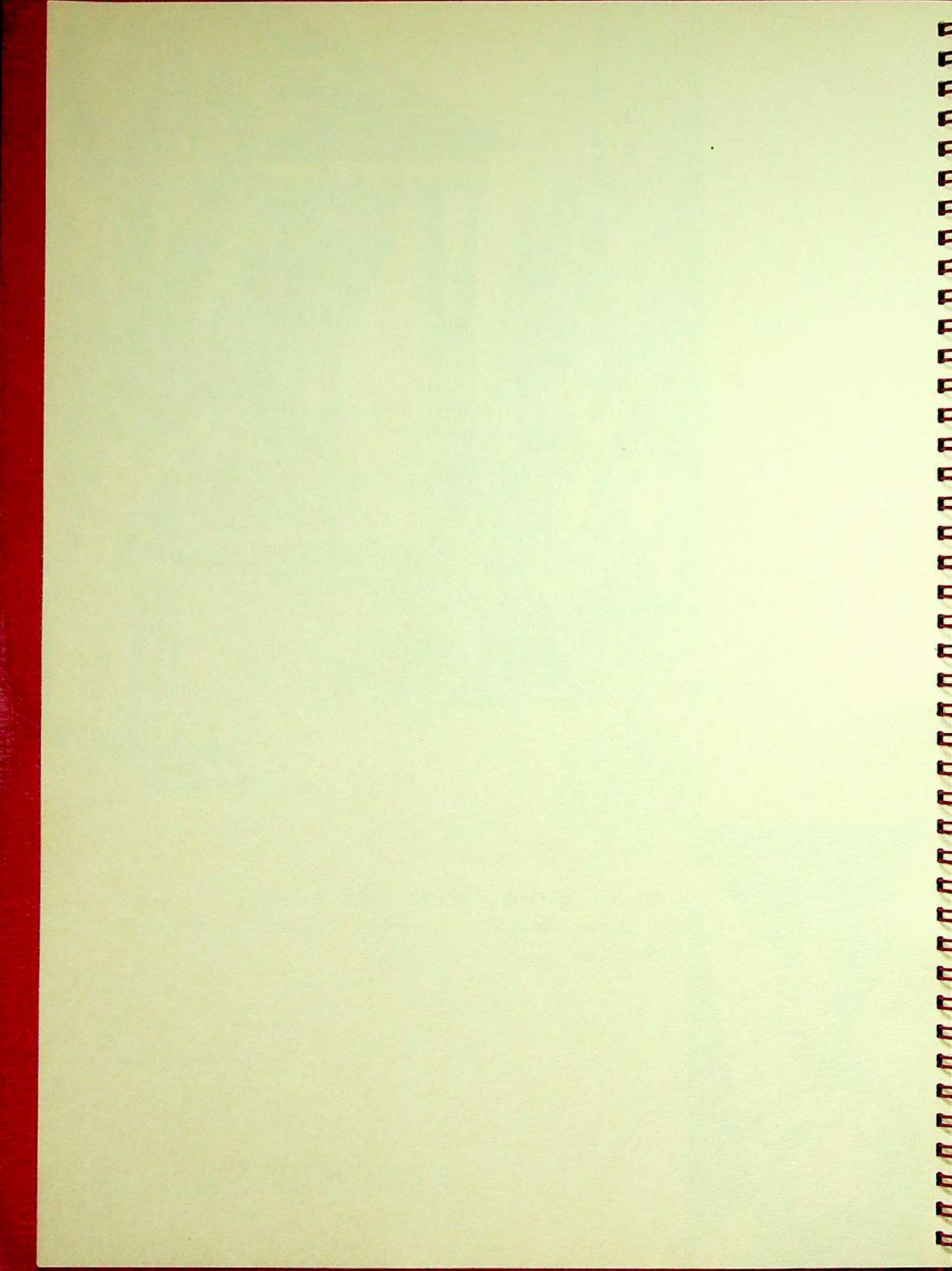
The immeasurable knowledge that you have attained in heart and will as well as intellect will always be, but countless joys and memories would augment the enjoyment if they were but recalled more oft.

It is small. It is simple; but it is rich and endeavors to present a sample of cultural and intellectual wealth which St. Helen's Hall Junior College holds within its educational gates.

For those who recall, remember and cherish, we have for you—The Scintilla.

—EDITOR.







GERTRUDE HOUK FARISS
Academic Dean

To the Class of 1939:

My wish for each of you is that you may develop within yourself the elements of the sea:—its infinite vastness, so that you may never grow cramped or narrow but that your vision may continue and your horizons may widen as each year passes; its penetrating blueness and

sparkling whiteness in calm, so that you may draw from life the endless variety of experience and the enrichment and fulfillment which are offered you; its surging power in storm, so that you make your own its massive strength; and its impenetrable depth, so that you may draw always upon hidden resources, only to find that your store increases through use and grows richer with the passing of time.

—GERTRUDE HOUK FARISS.

ENA MARSTON
Registrar



COLLEGE FACULTY



KATHERINE ARNOLD
French



CLARENCE SLOCUM
Ecclesiastical History, History,
Public Speaking



DOROTHY BECKENDORF
Home Economics



NEVA SERVICE
Physical Education



LENORE LEVANTURE
Physical Education



ANNE HILDENBRANDT
Music, Creative Dancing



TANYA SCHREIBER
Foreign Languages



MALCOLM BAUER
Journalism



FRANCES SAMUEL
Librarian

COLLEGE FACULTY



DOROTHY O'DEA
Home Economics, Science Assistant



DR. ALICE BAHRS
Head of Science Dept.



LILLIAN PETTIBONE
Science



RITA YORK
Child Study, Psychology



CAROLYN BOWERS
Drama, Poetry Appreciation



LOUISE DEES
Art



KEITH WALLACE
Art



HAROLD BOTTRELL
Social Science



THE REVEREND RICHARD FLAGG AYRES
Chaplain

The passion for freedom is the dynamic which drives the human race to break through the bonds of ignorance and selfishness to the full expression of life's possibilities. This aspiration is admirably summed up in words which are familiar to everyone who has worshipped at Mattins in the Junior College Chapel, where week by week we offer our prayers up unto One "Whose service is perfect freedom". The Collect for Peace, from which these words are taken, is one of the most venerable in our Book of Common Prayer, and has been in use among English Churchman since the days when St. Augustine brought the Latin Office to the British Isles in the sixth century. The trenchant phrase **Cui servire regnare est**, literally, "Whom to serve is to reign" was given a typically Anglo-Saxon turn when at the time of the English Reformation Thomas Cranmer translated it as "Whose service is perfect freedom", thus linking up man's natural urge for liberty with his fidelity to God's service.

Christianity is not sentimentality. Not our desires, but God's laws, are the basis of our wellbeing. There are basic laws or principles of life and conduct which must be obeyed if we would attain our highest development as human beings. Our education should enable us to attain some knowledge of these laws, and our religious life should help us direct our lives in accordance with them. We live most truly when our energies are devoted to the attainment of some high purpose. The Chapel and the classroom together are the means by which we attain to a knowledge of and devotion to Him whose Service is Perfect Freedom.

—RICHARD FLAGG AYRES, B. D., Chaplain.

STUDENT ADMINISTRATION



SUSANNAH HARDING
President Student body



MARTHA LEHMAN
Vice President Student body



JANE MERRIMAN
Secretary Student body



BETTY COURSEN
Treasurer Student body



ANNE JONES
Sophomore Representative



JANET SEGSEL
Sophomore Representative



ADELE JOHNSON
Editor, Hall Tree



BETTY-JO SHOWN
Freshman Representative



VIRGINIA SHERE
Freshman Representative

SOPHOMORE ADMINISTRATION



MARIAN HINTZEN
President



JANE MERRIMAN
Vice President



BETTY HUDMAN
Secretary-Treasurer



SUMA TSUBOI
Editor, Scintilla



SHIRLEY STEELE
Sergeant-at-Arms



HELENE ASQUITH
 Sophomore Scholarship
 Curie
 Scintilla Staff
 Chairman, Class Gift Comm.
 A scholarly, practical girl



FRANCES BENNER
 Princess, May Carnival
 Curie
 Forum
 Brown-eyed beauty



VIRGINIA BENNETT
 Alpha Mu Gamma Auxiliary
 International Relations Club
 Forum
 Glee Club
 Knows many a friend



ELIZABETH BROWN
 Studio Club
 Comm., Campus Day
 Comm., Class Picture
 Volleyball Head
 Her crowning glory—red hair



BETTY COURSON
 Treasurer, Student Body
 Vice President, Curie
 Comm., May Carnival
 Alpha Mu Gamma Auxiliary
 Obligingly yours



LOUISE CRUZEN
 President, I. R. C.
 Chairman, Class Picture
 Comm., Style Show
 A friend's friend



FREDERICKA CUTTER
 President, Forum
 Secretary-Treasurer, Alpha Mu Gamma
 Secretary-Treasurer, Curie
 Comm., Class Picture
 Forum's favorite



BETTY DEWEY
 Delta Psi Omega
 Lead in "Jane Eyre", Class Play
 Alpha Mu Gamma Auxiliary
 Comm., Sophomore Dinner
 Bid for Thespian fame



NAN FIFER
 Glee Club
 Comm., Sophomore Dinner
 Comm., May Carnival
 Helpfulness personified



ELEANOR GOLDBERG

Business Manager, Hall Tree
Chairman, Sophomore Style Show
Asst. Advertising Manager, Scintilla
Alpha Mu Gamma Auxillary
A loquacious lass



VIOLET GROSHONG

Treasurer, Forum
Comm., May Carnival
Curie
Chairman, Class Sale
A stout-hearted girl



BETTY HUDMAN

Secretary-Treasurer, Sophomore Class
Business Manager, Scintilla
Curie
Alpha Mu Gamma
Calm capability



SUSANNAH HARDING

President, Student Body
Candidate, Outstanding Freshman Girl
Delegate to OFCL, Corvallis
Delta Psi Omega
An inspirational leader



BARBARA HERMANN

Vico President, Forum
Secretary-Treasurer Athletic Association
Curie
Comm., Spring Formal
Vim, vigor, vitality



MARIAN HINTZEN

President, Sophomore Class
President, Delta Psi Omega
Student Council, Freshman
Candidate, Outstanding Freshman Girl
Sweet and lovely



ADELE JOHNSON

Nelson Shield Athletic Award
President, Athletic Association
Editor, Hall Tree
Scintilla Staff
A real sportsman



ANNE JONES

Princess, May Carnival
Student Council, Sophomore
Outstanding Freshman Girl
Secretary-Treasurer, Delta Psi Omega
Honors for a Princess



MARTHA LEHMAN

President, Student Council
Vice President, Student Body
Queen, May Carnival
Curie
Gracious and charming



MARYANN LONG

President, Curie
Delegate, Science Conference, Corvallis
Comm., Fall Informal
A true scientist at heart



IANE MERRIMAN

Secretary, Student Body
Delta Psi Omega
Delegate, OFCL, Corvallis
Advertising Manager, Scintilla
Talent plus personality



RUBY MULVIHILL

Forum
International Relations Club
Alpha Mu Gamma Auxiliary
Delegate, I. R. C. Conference, Reed
Soft-spoken sincerity



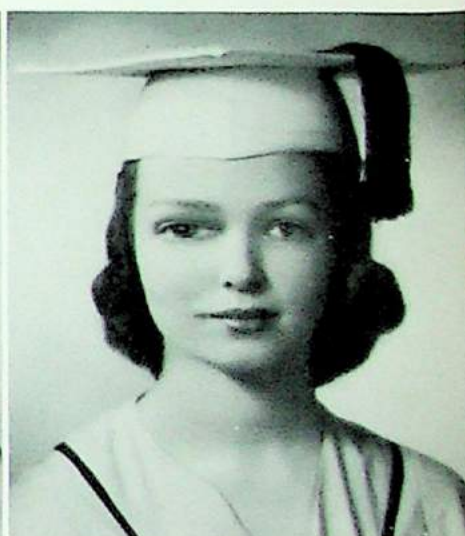
JANE OTHUS

Sergeant-at-Arms, I. R. C.
Curie
Studio Club
Forum
Diminutive dynamite



JANE REITH

Understudy Club
Forum
Comm., Class Gift
Volleyball Award
Always dependable



JANET SEGCEL

Transferred from Colorado, 1938
Student Council, Sophomore
Play Production Staff
Secretary, Understudy Club
Efficiency with a smile



VIRGINIA SORENSEN

President, Studio Club
International Relations Club
Chairman, Spring Formal
Chairman, Sophomore Dinner
A petite and capable miss



SHIRLEY STEELE

Sergeant-at-Arms, Sophomore Class
Court Jester, Freshman
Curie
Alpha Mu Gamma Auxiliary
With an impish twinkle in her eye



DOROTHY STEPHENS

President, Press Club
Chairman, Campus Day
Comm., Christmas Formal
Hall Tree Staff
Reserved, friendly dignity



LILAS TODD

Transferred from Albany, 1938
Class Play, "Jane Eyre"
Stately and studious



SUMA TSUBOI

Editor, Hall Tree
Editor, Scintilla
President, I. R. C.
Delegate, I. R. C. Meet, Reed, Ellensburg
Busy as a proverbial bee



YASUKO TSUBOI

Secretary, Forum
Curio
Delegate, I. R. C. Conference, Reed
Alpha Mu Gamma Auxiliary
Tiny bundle of willingness



VIRGENE WADE

Curio
International Relations Club
Alpha Mu Gamma Auxiliary
Comm., Fall Informal
Thorough in everything



CHARLENE WELSH

President, Alpha Mu Gamma
Delta Psi Omega
Scintilla Staff
Hall Tree Staff
Music at her finger tips



MARJORIE WINSLOW

Curio
Hall Tree Staff
Basketball Head
Comm., May Carnival
Warm, self confidence



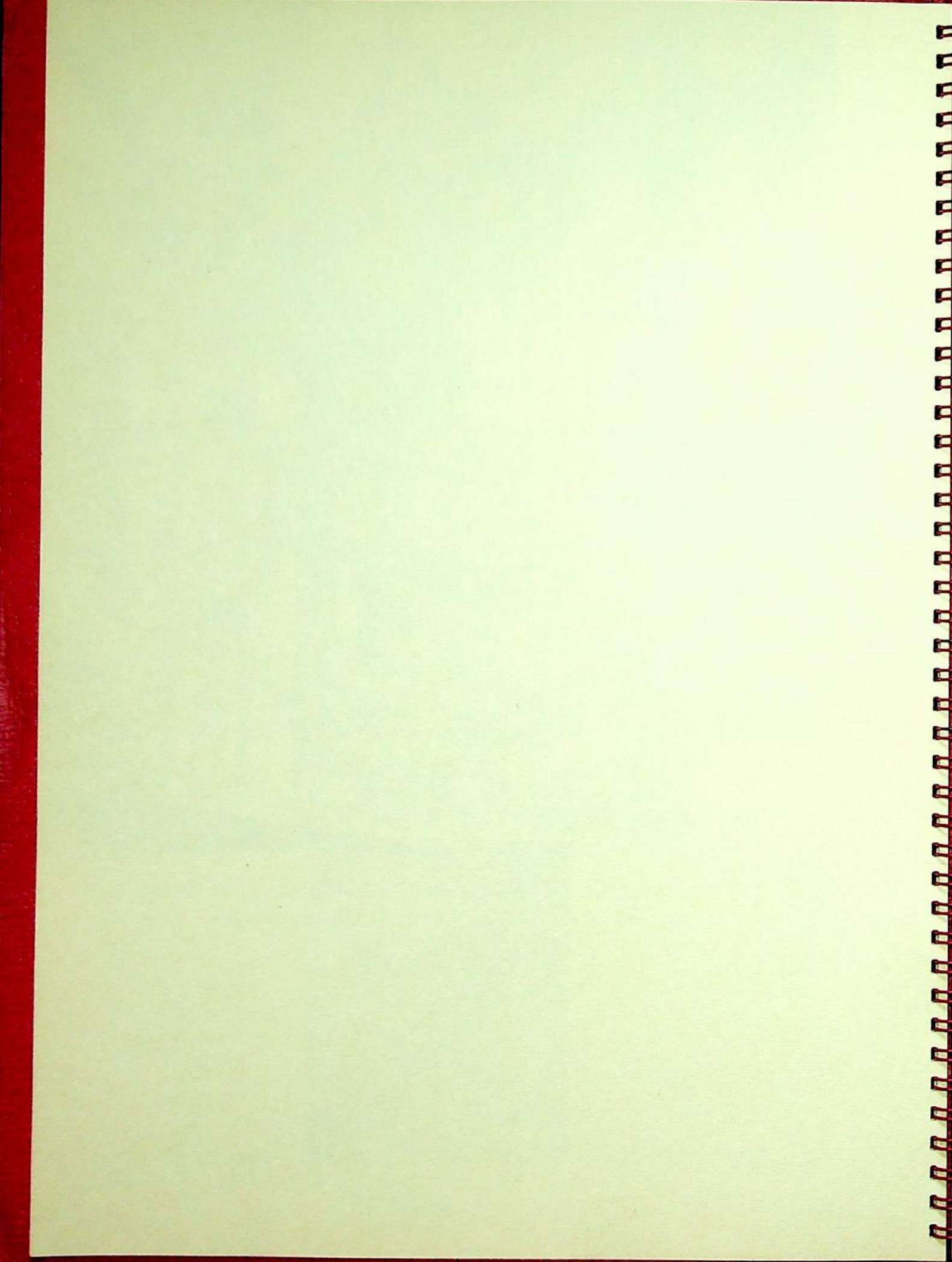
DORIS YOUNGER

Studio Club
Comm., Class Gift
Comm., Carnival Program
Tiny and trim



Dagwell Hall . . . expansion . . . progression . . . of the temple,
and with it, enrichment of the girls who dwell within its walls.

ACTIVITIES



St. Helen's Hall
Junior College
Presents
Her Royal
Highness
of the
May Carnival



QUEEN MARTHA I



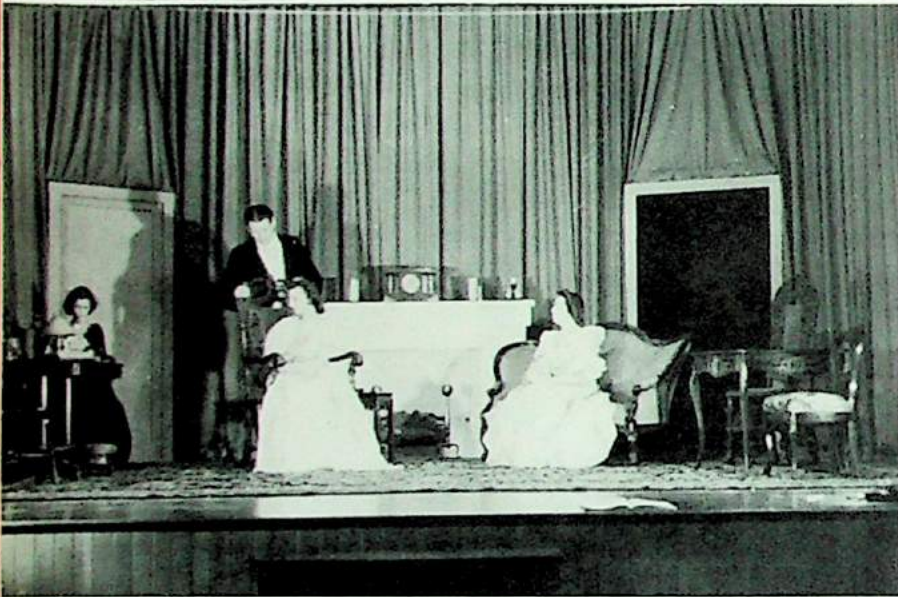
Princesses
ANNE JONES
FRANCES BENNER

And Jester
BETTY BOGCESS

THE SOPHO

PRES

"JANE



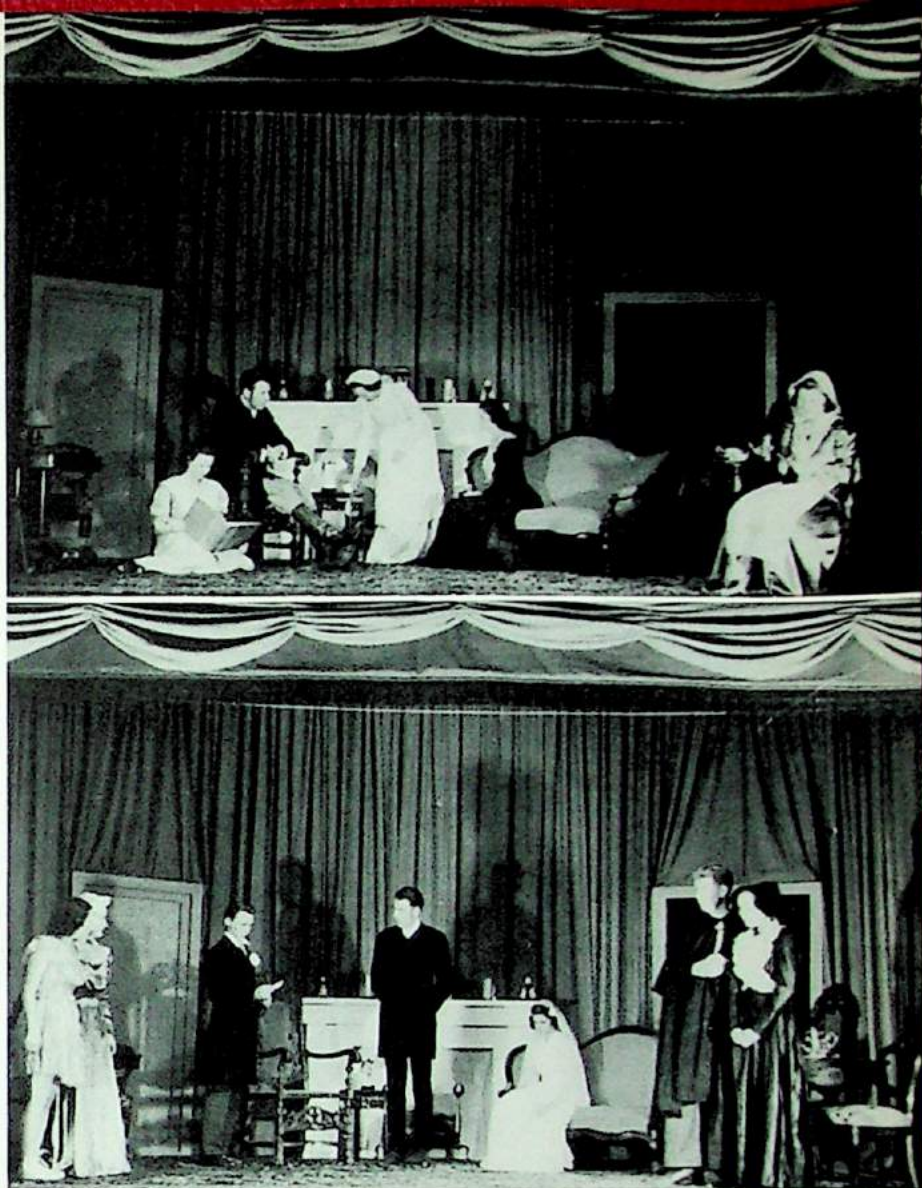
BEHIND THE SCENES

Before the setting of a new grey-blue cyclorama, the first sophomore class play, "Jane Eyre", was presented May 4 to a capacity audience.

Through special permission with the publisher, the college players were fortunate in being able to give the West Coast's premier amateur performance of Helen Jerome's dramatization of Charlotte Bronte's famous novel.

Also for the first time, guest players from University of Portland were selected to play all of the men's parts except the lead, which was taken by Ralph Collett, local author. Heretofore in plays given by the junior college, male roles have been taken by girls.

MORE CLASS ENTS EYRE"



THE CAST

Director—Carolyn Gordon Bowers

Prompter and Assistant to Director—Anne Jones

CAST

(In order of appearance)

Mrs. Fairfax	Susannah Harding
Leah	Shirley Steele
Jane Eyre	Betty Dewey
Grace Poole	Anne Jones
Mr. Rochester	Ralph Collett
John	Dick Clemo
Adele Varens	Jane Merriman
Madwoman	Lilas Todd
Lady Ingram	Virgene Wade
Blanche Ingram	Charlene Welsh
Mr. Briggs	George Johnson
Diana Rivers	Marian Hintzen
Hannah	Eleanor Goldberg
St. John Rivers.....	John Gregor

Make-up Artist.....	Lloyd Reynolds (Reed College)
Publicity	Janet Seggel
Business Committee....	Charlene Welsh, Marian Hintzen, Eleanor Goldberg
Stage Manager.....	Dorothy Dicks
Costume Mistress	Madeline Chin
Stage Crew..	Barbara Minor, Nancy White, Jean Webster, Betty Boggess, Jeanne Miller

PHYSICAL EDUCATION

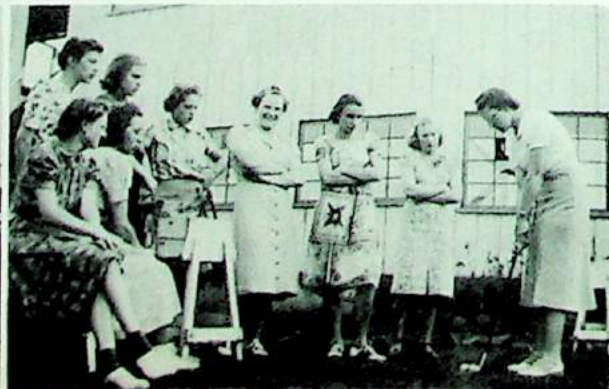
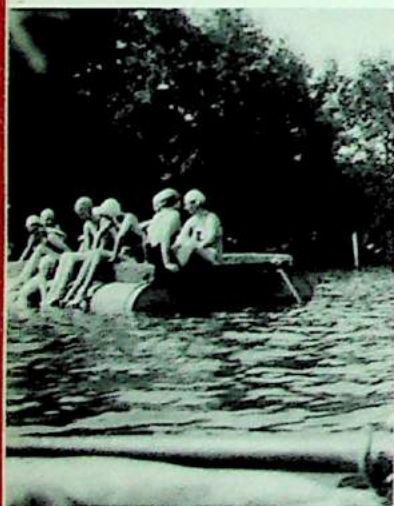
The gates of the sport season swung wide open from the very start of the college year. Twenty-one contestants vied for honors in the ping pong tournament, which was won by Adele Johnson. Runner-up was Frances Robertson. Volleyball began in November with two games scheduled, one between the sophomores and the freshmen, won by the latter, 38-33; and an all-star college squad against the high school, which was won by the Hall girls, 37-28.

Selma Zitzer, Marjorie Ruhndorf, Jane Reith, Adele Johnson, Barbara Hermann, Anne Hughes, Jane Othus, Yvonne Lofquist and Marjorie Nelson received volleyball letters.

With the new year, basketball practices commenced and continued to March 1. The sophomores tasted bitter defeat of 41-6 from a strongly organized freshmen team. A combined college team was victorious 19-18 in a close combat with the Hall high school. In a return game the high school emerged victorious with a score of 32-17. Reserves of both schools clashed, with the college losing.

Basketball awards were presented to Katherine Thompson, Marjorie Winslow, Betty-Jo Shown, Barbara Compton, Laura Ianelle, Roberta Romig, Adele Johnson and Barbara Hermann.

Spring filled the tennis and badminton courts with racket fans and tournaments were scheduled to select the outstanding players. Both singles and doubles were played. Virginia Shere and Martha Randall ranked first and second respectively in the badminton singles bracket. They were also winners in the doubles as partners.





At the Athletic association carnival in May, the Grand salute was given Queen Martha by the advanced fencing class of Susannah Harding, Betty Coursen, Adele Johnson, Yasuko Tsuboi, Marjorie Farnell and Jane Merriman. A badminton doubles match was also played between partners Virginia Shere and Barbara Coleman and Martha Randall and Marjorie Aagard.



Athletics at the junior college are not limited to the aforementioned sports. Skiing provides excitement for thrill-seekers on the slopes of majestic Mount Hood at famous Timberline Lodge. Golfing on the fairways of Portland's lovely courses brought out many enthusiasts.



Swimming and diving in the spacious and modern pool at B'nai B'rith under the coachmanship of Miss H. Hirschberg brought refreshing hours of recreation and exercise as well as physical education. Everglades on Lake Oswego provided the same aquatic amusement. Those who had a yen for riding, found opportunity to do so at the various riding academies of Portland. Grace and poise were developed in rhythmic and tap-dancing classes.

Those are reasons enough for the popularity of physical education classes.





FRONT ROW—F. Benner, V. Wade, A. Jones, S. Steele, H. Asquith, R. Azumano, F. Namba.
 SECOND ROW—Y. Tsuboi, J. Othus, B. Hermann, B. J. Shown, Miss O'Dea, M. Long, B. Coursen, F. Cutter, M. Aagard, B. Crossley.
 THIRD ROW—E. Susac, V. Groshong, B. Hudman, V. Teggert, K. Thompson, J. Seggol, F. Robertson, M. Lehman, M. Winslow, A. Johnson.

PresidentMaryann Long
 Vice PresidentBetty Coursen
 Secretary-TreasurerFredericka Cutter
 Advisors.....Dr. Alice Bahrs, Dorothea O'Dea, Lillian Pettibone

This, the science honorary organization had as its most important activity the attending of the Willamette Valley Science conference at Corvallis in March. Reports of scientific experiments prepared by the Curie members, were presented by the official delegates, Frances Namba, Betty-Jo Shown, Kathryn Thompson, Maryann Long, and Dr. Alice Bahrs, advisor. Reports on the mineral activity of Oregon hot springs, speed of the digestion of hot and cold-blooded animals and correlation of height and weight with pulse rate before and after exercise were contributed by the club. The latter experiment report was given before the entire conference by Maryann Long.

Main interest of the club is centered about the growth of science and the position of women in its development.

Field trips were taken to Mt. Hood, Nelscott and Sandy river.



FIRST ROW—B. Peterson, V. McNamee, F. Robertson, B. Hermann, V. Groshong, F. Cutter, Y. Tsuboi, A. Johnson, B. Richards, B. J. Shown, P. Akers.
 SECOND ROW—F. Namba, I. Takei, N. Stephens, L. Webb, P. Barbee, M. Adams, J. Othus, A. Colliver, V. Bennett, J. Hall, M. Farnell.
 THIRD ROW—R. Romig, E. Susac, V. Drus, L. Spahn, B. J. Crossley, M. Tipton, J. Miller, K. Thompson, D. Stephens, M. F. Wintler, J. Reith, R. Mulvihill.

President Fredericka Cutter
 Vice President Barbara Hermann
 Secretary Yasuko Tsuboi
 Treasurer Violet Groshong

Religious topics and the relation of religion to daily life are the objects to which the club is devoted. Forum's study for the year was devoted to "Prayer". Speakers included Dean H. M. Ramsay, Mr. Clarence Slocum, Mrs. G. H. Beard and the Rev. Richard Flagg Ayres.

Projects included the purchasing and placing of an altar curtain and pole for the Japanese Episcopal Mission. During Christmas, a tree was decorated and presented to the mission. Altar linens were also made. Bandages were made and sent to the Hudson Strait Hospital at Fort Yukon, Alaska. The care of the college chapel was undertaken by Forum.

Besides having various sales, members spent a week-end at Everglades during which time initiation of new members took place, and a trip to Mt. Hood for skiing was made in winter.



STANDING (Left to Right)—J. Merriman, A. Jones, M. Hintzen, C. Welsh.
SEATED (Left to Right)—B. Dewey, Miss C. Bowers, S. Harding.

President	Marian Hintzen
Vice President	Jane Merriman
Secretary-Treasurer	Anne Jones
Advisor	Miss Carolyn Gordon Bowers

This national dramatic honorary organization encourages and assists its members in acquiring a more complete understanding in the art of drama.

Formation of the Understudy club for the first year students of dramatics was Delta Psi Omega's important project of the year. Stunt Night was presented by the club early in the fall, with three one-act plays, a romance, a comedy and a melodrama presented. Members of the Understudy club served refreshments during intermission.

In February seven girls were pledged for membership into this drama honorary. Every member of Delta Psi Omega took a major role in the sophomore production of "Jane Eyre".

The year's subscription to the Theatre Arts Monthly was awarded to Dorothy Dicks. She was voted by Delta Psi Omega as the most outstanding contributor of her service to the drama department. She has worked behind scenes on all drama activities which were presented throughout the year. She was commended highly for efficiency as property manager.

U
N
D
E
R
S
T
U
D
Y
C
L
U
B



FRONT ROW—Madeline Chin, Barbara Minor.
 SECOND ROW—Dorothy Dicks, Leota Whitelock, Roberta Romig, Lillian Webb, Nadine Stevens.
 THIRD ROW—Pauline Barbee, Jane Reith, Nancy White, Vivian McNamee, Selma Zitzer.

FALL TERM

PresidentBarbara Minor
 Vice PresidentJean Webster
 Secretary-TreasurerJanet Seggel

SPRING TERM

PresidentMadeline Chin
 Vice PresidentSelma Zitzer
 Secretary-TreasurerNancy White

Formed by Delta Psi Omega early in the year the club has already had a fruitful season.

At the bi-monthly meetings, the different playwrights were discussed, and scenes were presented from their most popular works. Among the scenes and the plays studied were "Rehearsal" by Christopher Morley, "Ah Wilderness" by Eugene O'Neill, "Cavalcade" by Noel Coward, and "You Can't Take It With You" by George Kaufman.

Social events included a dinner party at "Everglades" and a "Cotton hop" in May. The Understudy members served as the stage crew for "Jane Eyre", sophomore class play.



A
L
P
H
A

M
U

G
A
M
M
A

and

Auxiliary

FIRST ROW—B. Dewey, J. Merriman, Miss K. S. Arnold, C. Welsh, A. Jones, V. Bennett, A. Colliver.
 SECOND ROW—B. Hudman, V. Wade, B. Hermann, V. Groshong, B. Coursen, Y. Tsuboi.
 THIRD ROW—S. Steele, M. Randall, M. Lehman, N. White, N. Stephens, M. Chin, B. Minor, E. Staehli.

PresidentCharlene Welsh
 Vice PresidentAnne Jones
 Secretary-TreasurerFredericka Cutter
 AdvisorKatherine Arnold

This, the foreign language honorary society, has as its major project the sponsoring of an auxiliary group of about twenty students, which meets monthly. At these meetings at the homes of the members, the program is provided by a guest speaker whose talk is centered on different aspects of other nations.

In the past year, members of Alpha Mu Gamma and its auxiliary have had the pleasure of hearing, among others, Miss Marian Morange, who recently took a bicycle trip through France; Mrs. Peterson, who spoke on the Scandinavian countries and Miss Radka Ivankava, who told of her recent trip to Bulgaria.

As its service for the year, the club sponsored the annual Christmas assembly with the Rev. Lansing E. Kempton as guest speaker. Carols were sung in French, German, Russian and Latin by the language classes.

G
L
E
E

C
L
U
B



FIRST ROW—P. Akers, J. Miller, M. Chin, N. Fifer.
 SECOND ROW—A. Colliver, L. Webb, B. Minor, Y. Tsuboi, P. Barbee.
 THIRD ROW—M. Hawes, I. Clark, L. Spahn, J. Hall, V. McNamee, V. Bennett, C. Welsh.

Student Chairman Madeline Chin
 Director Mrs. Anne Hildenbrandt
 Accompanist Charlene Welsh

Though a newly organized unit of the college, this group has a rapidly growing repertoire which included "Tales from the Vienna Woods" by Strauss, the "Prayer" from "Hansel and Gretel" by Humperdinck, "Gesù Bambino", and selections from the "Mikado" by Gilbert and Sullivan.

The club entertained the Mothers' club both in the fall and in the spring, assisted in the program of the May Carnival, and appeared in a recital for Mrs. Hildenbrandt on May 12. Five selections were sung.

Meeting once a week in the college chapel, the members have given their enthusiastic cooperation to an organization which they hope will become permanent at the Hall.

S
T
U
D
I
O

C
L
U
B



FIRST ROW—J. Allen, Mrs. L. Dees, V. Sorenson, M. Chin.
SECOND ROW—P. Akers, M. Aagard, D. Younger, D. Furst, J. Othus, A. Hughes, E. Brown.

President Virginia Sorenson
Vice President Madeline Chin
Secretary-Treasurer Jerry Allen
Advisor Mrs. Louise Dees

Both educational and social is the purpose of this club, which has as its object the advancement of interest, knowledge and enjoyment of art.

Besides the regular bi-monthly meetings, the members enjoyed two field trips this year; one to the Skidmore art museum, and to the weaving studio of Mrs. A. A. Allen.

The club chose as its college service for the term, the sponsoring of an assembly speaker, Miss Dulcina Baird whose topic was interior decorating. Other activities included the making of programs and bids for college informal dances, and a trip to Mt. Hood for skiing. In the fall, a sport dance was held in conjunction with the International Relations club.

ATHLETIC ASSOCIATION



FIRST ROW—B. Hermann, A. Johnson, M. Ruhndorf, Miss N. Service.
 SECOND ROW—P. Akers, M. Winslow, A. Jones, E. Brown, M. Farnell.

- | | |
|---------------------------|-------------------|
| President | Adele Johnson |
| Vice President | Marjorie Ruhndorf |
| Secretary-Treasurer | Barbara Hermann |
| Advisor | Miss Neva Service |

All athletic tournaments, and occasional contests are supervised by the Athletic association, and responsibility is divided among the various heads of sports. The heads of sports are Phyllis Aker, tennis; Anne Jones, badminton; Marjorie Winslow, basketball; Beth Brown, volleyball; and Marjorie Farnell, fencing.

Every member of the junior college student body is automatically a member of this organization. Sales were held to purchase minor equipment, such as ping pong paddles and balls.

Letters for sports and pins and medals are purchased and awarded by the association. The largest undertaking is the traditional May carnival at which time, festivity reigns at the command of her royal highness. The queen this year was selected by strict ballot and the choice of the student body was Martha Lehman. Two years before, Martha's sister, Alda, was elected queen to rule over the Hall realm.



FRONT ROW—C. Welsh, A. Colliver, D. Stephens, E. Goldberg.
 SECOND ROW—A. Johnson, M. Winslow, J. Seggel, B. Hermann, S. Steele, F. Robertson,
 S. Tsuboi.
 THIRD ROW—R. Azumano, P. Barbee, V. McNamee, B. Boggess, L. Whitelock.

FALL TERM

Editor-in-ChiefSuma Tsuboi
 Business Manager....Eleanor Goldberg
 Feature Writers.....Charlene Welsh,
 Marjorie Winslow

Advisor Malcolm Bauer

ADVERTISING STAFF—Jane Merriman, Susannah Harding, Betty Hudman, Katherine
 Thompson, Marjorie Aagard, Martha Randall, Jean Webster, Eleanor Staehli.

REPORTERS—Reiko Azumano, Pauline Barbee, Vivian McNamee, Betty Boggess, Leota
 Whitelock, Janet Seggel, Shirley Steele, Frances Robertson.

SPRING TERM

Editor-in-ChiefAdele Johnson
 Assistant Editor.....Ardeth Colliver
 Sports EditorBarbara Hermann
 Feature Writers.....Janet Seggel,
 Dorothy Stephens

The improvement and the development of the Hall Tree in form, style and copy this year has been most outstanding. Six printed bi-monthly issues of a four column publication was printed under the editorship of Suma Tsuboi early in the year. The Hall Tree was prepared and financed by the students on the editorial staff and the advertising staff.

After the resignation of Suma Tsuboi, which came about through her election as editor of the year-book, the position was taken over by Adele Johnson. A two-column mimeographed Hall Tree was prepared every two weeks by her staff for the rest of the term. No advertisement was solicited for the mimeographed issues.

P
R
E
S
S

C
L
U
B



FRONT ROW—A. Colliver, B. Hermann, D. Stephens, J. Seggel, S. Steele, A. Johnson.
 SECOND ROW—C. Welsh, R. Azumano, P. Barbee, J. Reith, F. Robertson, B. Boggess, J. Hall,
 B. Hudman, E. Goldberg.
 THIRD ROW—S. Tsuboi, J. Othus.

PresidentDorothy Stephens
 Secretary-Treasurer Janet Seggel
 Advisor Malcolm Bauer

When Beta Phi Gamma, journalism honorary was disbanded due to small membership, out of it grew the Press club. The Press club was formerly the auxiliary of Beta Phi Gamma.

The purpose of the club is to further the interests of journalism at the junior college. The Press club developed through the efforts of the advanced reporting class.

The annual Cotton day in May again brought out summer enthusiasts bedecked in many attractive cotton frocks which were made or purchased by the students. Lovely corsages and linen were presented to Mary Tipton, Esther Lenon, Virginia Sorenson, Madeline Chin and Doris Younger for their clothes. Judging was done by Suma Tsuboi, last year's winner, Jane Reith and Barbara Hermann.

Malcolm Bauer, picture editor of The Oregonian spoke on the transmission of news-pictures by wire at a college assembly.



FRONT ROW—I. Takei, R. Azumano, S. Tsuboi, B. Richards, B. Peterson, V. Sorenson, J. Othus, J. Webster, J. Hall, S. Steele, K. Thompson, Y. Tsuboi.
 SECOND ROW—V. Wade, F. Namba, B. Crossley, P. Barbee, V. Bennett, R. Mulvihill, A. Jones, V. Groshong, B. Hermann, D. Stephens.
 THIRD ROW—C. Welsh, S. Harding, M. Lehman, B. Hudman, M. Adams, B. Boggess, D. Chalcombe, B. J. Shown, M. Tipton, L. Webb, V. McNamee, L. Janelle, J. Seggel, Mr. H. R. Bottrell.

FALL TERM

President Suma Tsuboi
 Vice President..... Martha Lehman
 Secretary Louise Cruzen
 Treasurer Anne Jones
 Editor Glenn Coney
 Advisor

SPRING TERM

PresidentLouise Cruzen
 Vice President..... Anne Jones
 Secretary Jean Webster
 Treasurer Jeanne Miller
 Editor Joan Hall

Approximately 90 students of Portland high schools and colleges were guests of this organization at a two-day conference at Everglades in April. Panel and round table discussions interspersed with social events constituted the eventful gathering. Suma Tsuboi, Joan Hall, Martha Randall, Betty-Jo Shown from the Hall and Elizabeth Brown of Reed were panel discussion participants and round table chairmen.

"Swing Session" with an international theme was sponsored by the club in conjunction with the Studio club in November. Jimmy King's eight-piece orchestra provided the "swing".

Delegates to the Northwest Regional International Relations club conference of college students were Suma Tsuboi, Jeanne Miller, Betty-Jo Shown and Mr. Harold Botterell, advisor. The meet took place at the Central Washington College of Education at Ellensburg in March.

Some of the speakers who talked to the group included, Rev. L. W. Lynne on the Munich agreement, and Dr. Yutaka Minakuchi, Japanese lecturer. Inauguration of the second-term officers took place in December at Nikko Sukiyaki House, during which time Dr. Minakuchi spoke.

Aside from outside speakers panel discussions made up of club participants created many an active meeting. Lunches, or food sales were undertaken by the club during important occasions.

T
H
E
S
C
I
N
T
I
L
L
A



FIRST ROW—E. Goldberg, S. Tsuboi, H. Asquith.
SECOND ROW—C. Welsh, J. Merriman, M. Lehman, B. Hudman, A. Johnson.

Editor-in-Chief Suma Tsuboi
 Business Manager Betty Hudman
 Advertising Manager Jane Merriman
 Assistant Advertising Manager..... Eleanor Goldberg
 Activities Editor Charlene Welsh
 Literary Editor Helene Asquith
 Artist Martha Lehman
 Athletics Adele Johnson

ADVERTISING SOLICITORS—Dorothy Dicks, Katherine Thompson,
 Betty-Jo Shown, Jeanne Miller, Jeannette Gunther, Marjorie
 Aagard, Eleanor Staehli, Martha Randall, Shirley Steele, Jane
 Reith.

F
R
E
S
H
M
E
N



FRONT ROW—V. Drus, D. Challicombe, M. Adams, R. Azumano, A. Colliver, E. Cooper, P. Barbee, I. Clark, H. J. Doddridge, E. Baldwin, B. Coleman.
SECOND ROW—D. Dicks, B. J. Crossley, P. Ludwick, B. Bogges, J. Allen, M. Aagard, P. Akers, M. Chin, M. Brinkley, M. Williams.



FRONT ROW—A. Hughes, B. Peterson, M. Farnell, M. Hall, E. Richards, M. Hawes, D. Randall, D. Furst, F. Namba, F. Robertson.
SECOND ROW—L. Janelle, E. Lenon, M. Randall, B. Minor, J. Gunther, J. Miller, B. Richards, J. Hall.

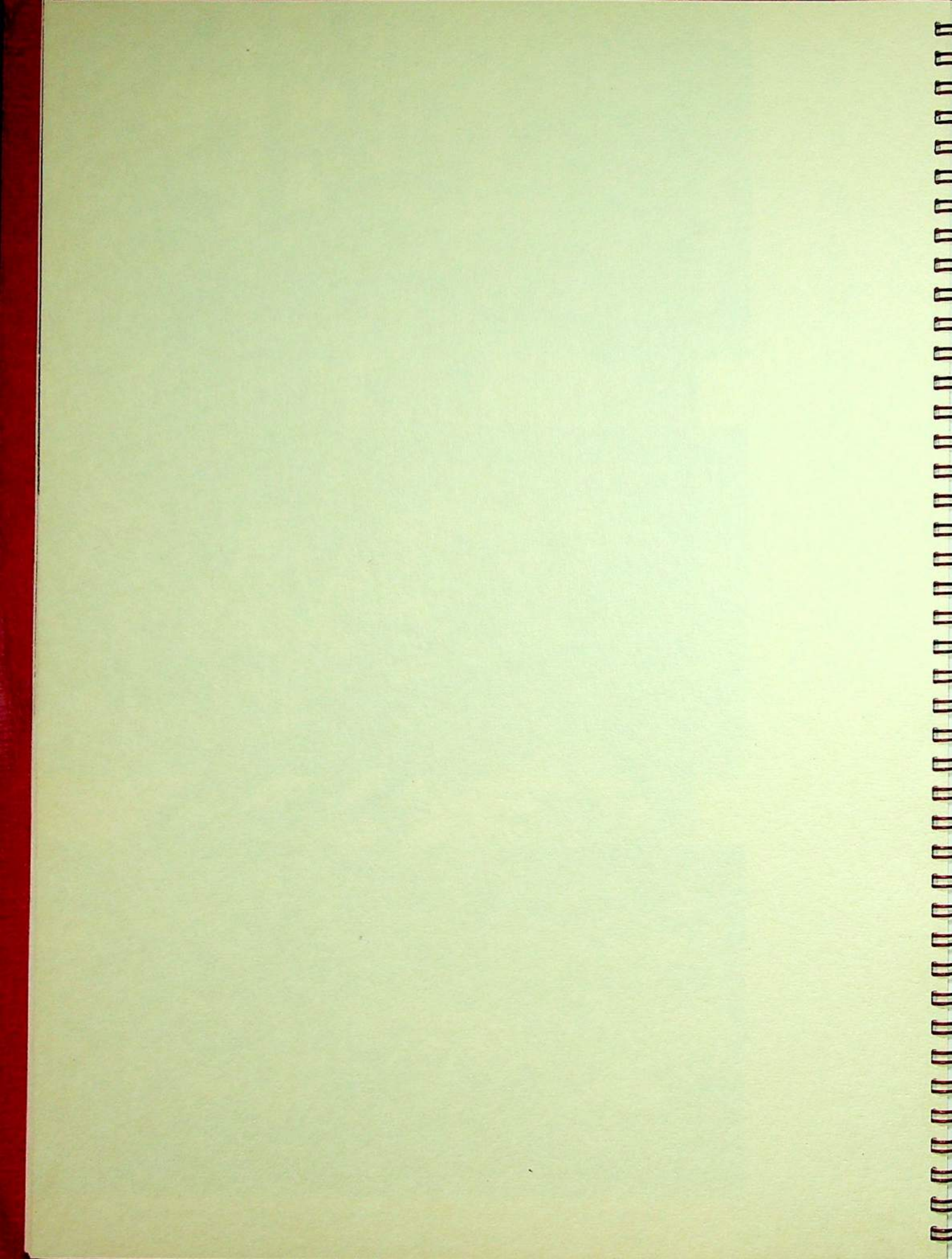


FRONT ROW—L. Webb, S. Zitzer, M. Ruhndorf, I. Takei, L. Whitelock, J. Trouton, V. West, M. Sullivan, K. Wilder, L. Matzen.
SECOND ROW—B. J. Shown, K. Thompson, N. Stephens, V. McNamee, L. Spahn, M. Tipton, J. Webster, N. White, R. Romig, V. Teggert, E. Staehli.



Everglades . . . recreational serenity . . . memories of strolls
through fragrant woods and songs before a friendly hearth . . .

MEMOIRS



COLLEGE SONGS

THANKS FOR THE MEMORIES

Thanks for the memories
Of picnics at the lake
Of swims we used to take
And of the lunch
Of salad and punch
And different kinds of cake
Oh, thank you so much.

Thanks for the memories
Of nights we used to cram
For every stiff exam
And, at last, when we got past
We all felt very grand
Oh, thank you so much.

Oh, many is the time that we linger
And many is the time that we'll remember
The marvelous, the glorious splendor
Of Campus days, so now we say

Thanks for the memories
Of ringing Chapel bells
The meaning that it tells
Of caps and gown as we walk down
The aisle, how each heart swells
Awfully glad we've known you
Cheerio and toodledo
And thank you so much.

JANE OTHUS,
VIRGINIA SORENSON.

AH, WELL I REMEMBER

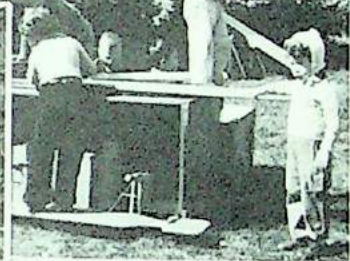
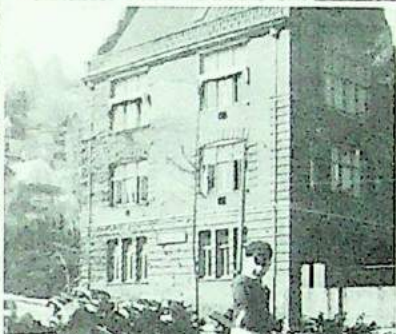
Ah, well I remember
Friendships made at the Hall;
Friends met in September
Memories will e'er recall.

Gone, friends of September,
Gone, friends one and all.
Time never shall sever
Friendships made at the Hall;
Time never shall sever
Friendships made at the Hall.

Walls, covered with ivy
I remember so dear
Girls lodged in my memory
Always ready to cheer.

Halls ringing with echoes
All happily made
Alma Mater we owe
Joys which never will fade
Alma Mater we owe
Joys which never will fade.

JANET SEGCEL,
MADELINE CHIN.



КАЗИЩА

St. Helen's Hall . . . We Owe—

The days have sped like meteors in flight, and yet it seems like eons since that day we stood on the threshold of a long-anticipated and thrilling adventure—participation in the life of St. Helen's Hall junior college.

How experienced and awe-inspiring seemed the sophomores, greeting with shouts of exultation their friends, parted during summer vacations but now returned to the fold; with what trepidation we allowed ourselves to be herded into the library to take those fateful-sounding "aptitude tests".

But the feeling of inferiority and loneliness that flooded us those first few days gradually receded. Classes settled into routine and firm friendships were made, not only with the girls in our rank of "greenhorn" but with sophomores who were found to be only human after all, and as anxious to know us as we were to know them.

Yes, two years at the Hall have sped by, leaving poignant memories of those important occasions . . . the get-togethers . . . "swing sessions" . . . enjoyment in being "big sisters" to timid freshmen . . . Christmas formals and the swishing of gowns . . . "bull sessions" at the lake and in the homey dorms . . . the dedication of the new wing and our decision to call it Dagwell Hall . . . singing of college songs . . . faculty entertainment . . . conferences with the professors, they always slipped our minds . . . the queen in regal dignity . . . fragrance of flowers and crisp cotton dresses on "Cotton day" . . . donning shorts and attacking dandelions on Campus Clean-up day . . . the burning of midnight oil . . . finals . . .

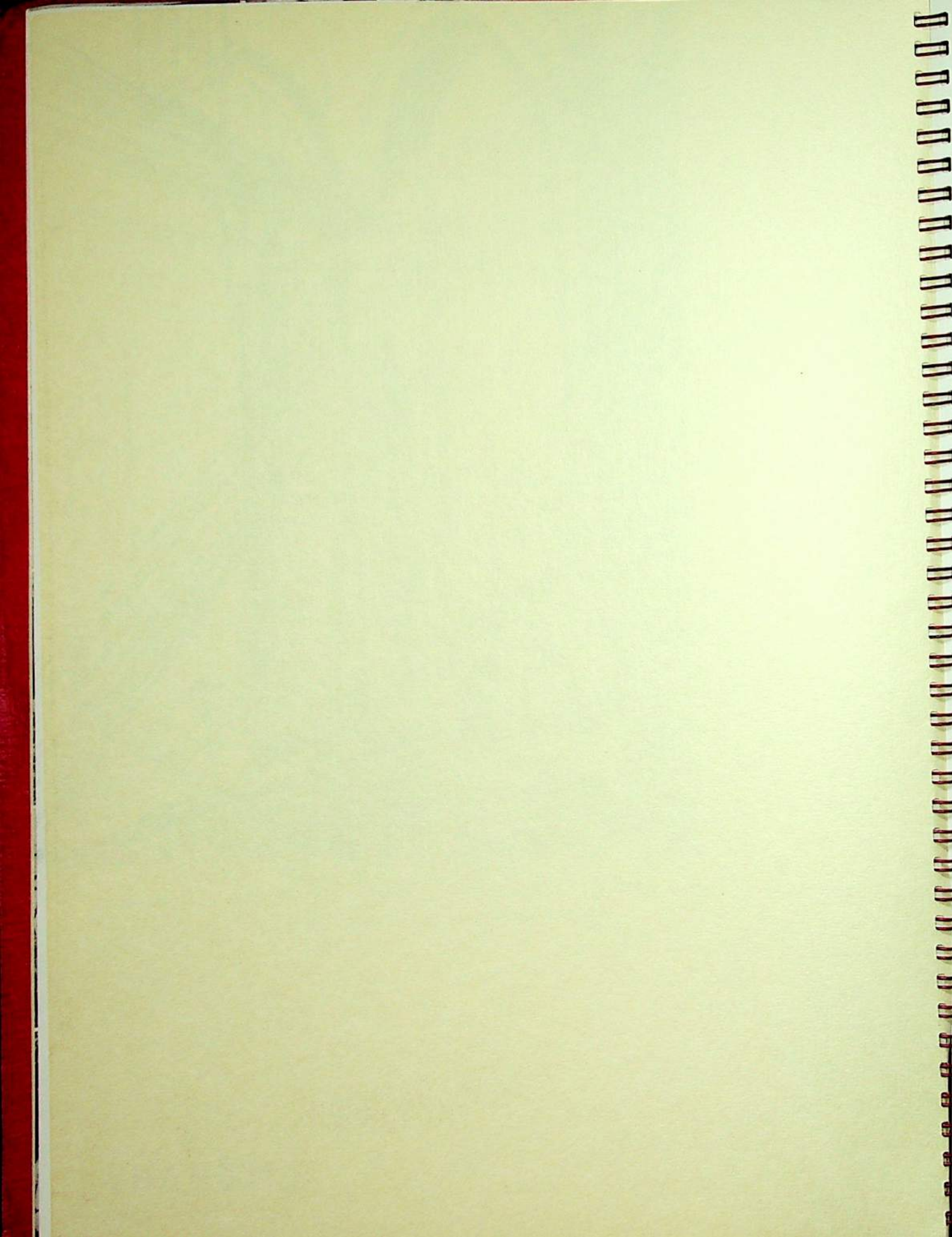
Then, near the very end, somehow, marbles bumped around in our throats . . . the Sophomore dinner and graduation formal . . . Baccalaureate Sunday . . . Torchlight procession at Everglades, white mortar boards and gowns . . . Commencement.

St. Helen's Hall . . . we owe . . .



The chapel . . . spiritual . . . symbol of reverence . . . inspiring . . . goal of pure truth and high ideals . . .

LITERARY



The Bull in the China Shoppe

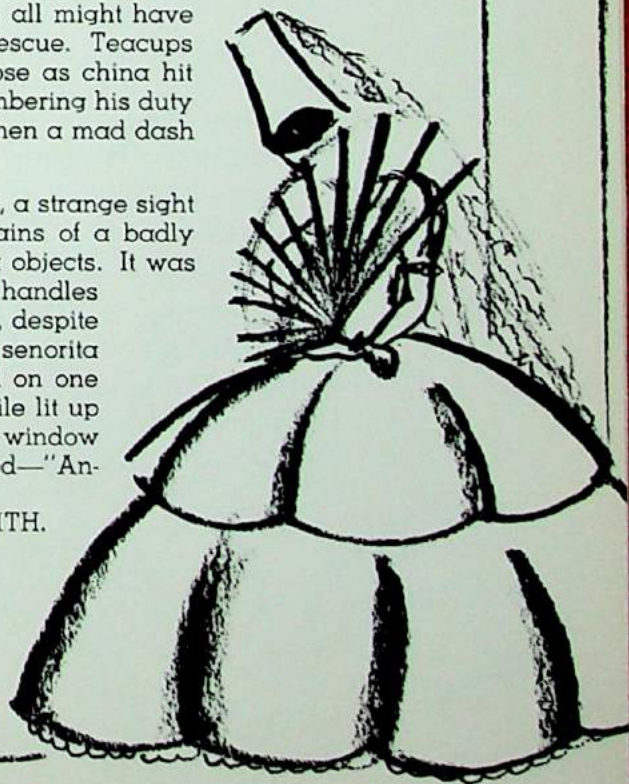
To the accompaniment of the solemn tock of the grandfather clock and the sotto-voiced tick of the cuckoo clock, Mr. Kindly took his coat down from the hook behind his desk and exchanged his little, black skull cap for a weather-beaten fedora. He tottered slowly to the door of "Ye Olde China Shoppe," but, hand on knob, paused to take a last, fond look at his precious objects before going home for the night. On shelves all around the room reposed the treasures of his heart—mugs, plates, cups and saucers, figurines—every imaginable kind of china. He looked especially at his favorites in the window—a beautiful senorita in a scarlet gown of many ruffles and high mantilla of black lace, holding a dainty fan over which glowed her dark dancing eyes. Beside her was a handsome matador in his splendid costume of many colors trimmed in gold braid. In his hands he held a crimson cape which he waved at a massive bull which stood ready to charge, head lowered and forefoot pawing the ground. Mr. Kindly placed the senorita a little closer to the senor, then went outside, and, closing and locking the door, passed by the window and went on down the street.

After his departure all was quiet except for the measured, rhythmic beat of the clocks. The hours passed—ten, eleven, and as the last stroke of twelve faded away, the breath of life passed through the tiny shop. All the pieces of china heaved sighs of relief as they stretched muscles cramped from their customary positions and prepared for another hour's revelry.

While everyone looked on and clapped in rhythmic time, the German beer mugs danced a bumping, clumping jig, clanking the lids of their tankards up and down and knocking their sides against one another. The plates turned cart-wheels and a green frog with bulging eyes played "Nola" on a row of Haviland teacups. Everyone was having a grand time when who should appear, leaning on the arm of her handsome sweetheart, but the lovely senorita from the window. The pair had come to dance for their friends, and to the delight of their audience, they twirled and whirled with gay abandon, stamping their feet madly. As they finished the dance with a graceful sweep and bowed in acknowledgment of the tumultuous applause, a fierce roar shook the entire room. With snorts and bellows, the bull came charging directly at the senorita. The senor grabbed his cape, and stepping in front of her, met the beast face to face. If everything had been left to his capable hands, all might have gone well, but, unfortunately, everyone came to his rescue. Teacups began sailing through the air and a fearful clatter arose as china hit mirrors, walls, and floor. And then—grandfather, remembering his duty just in time, struck one. There was a startled silence—then a mad dash for the familiar places on the shelves.

When Mr. Kindly opened the door the next morning, a strange sight met his eyes. In the middle of the floor lay the remains of a badly smashed china bull and pieces from many other china objects. It was also strange that spouts were missing from pitchers and handles from teacups. Mr. Kindly walked to the window. There, despite wide rents in her skirt and a torn mantilla, the beautiful senorita smiled roguishly at the handsome matador who stood on one leg and extended empty hands. An understanding smile lit up the face of Mr. Kindly as he removed the sign from the window which read: "Special—Five Dollars" and substituted—"Antiques—Priceless".

HELENE ASQUITH.





DESERTED

Damp shades of the day pervade the room
Inviting death. A gray and ghostly light
Lingers, hanging through windows, webbed
As mildewed hair. Stealthily as the night
A fog steals from the misty moor and blows
Across the window sash, along the floor.

DOROTHY STEPHENS.

THE CLOUD

I saw her come.
She crossed the beauty of the sunset,
Her gray robes billowing about her
Catching the golden splendor of the setting sun.
She saw the earth and man
As she hovered above the unhappy world.
She wept, and her tears fell warm upon the soil,
And when there were no longer tears to spare
She left; her robes, now, floating gossamer,
Soft misty wisps sailing across the moon.

BETTY DEWEY.



Windows

The clock in the steeple, high above the hurrying crowd of tired fathers and mothers turning their footsteps once again toward home, struck six o'clock and the deep, resonant sounds carried far into the distant hills.

A little old lady pulled her shabby gray coat more tightly around her thin, weary body and walked slowly along the busy street, getting jostled and bumped by the young members of another generation. She stopped to gaze longingly at a show-window containing an assortment of fur coats and fall dresses. Farther on was a window full of all the groceries and good things that make up a Christmas dinner; but as she saw this, a flash of pain crossed her face and she hurried on.

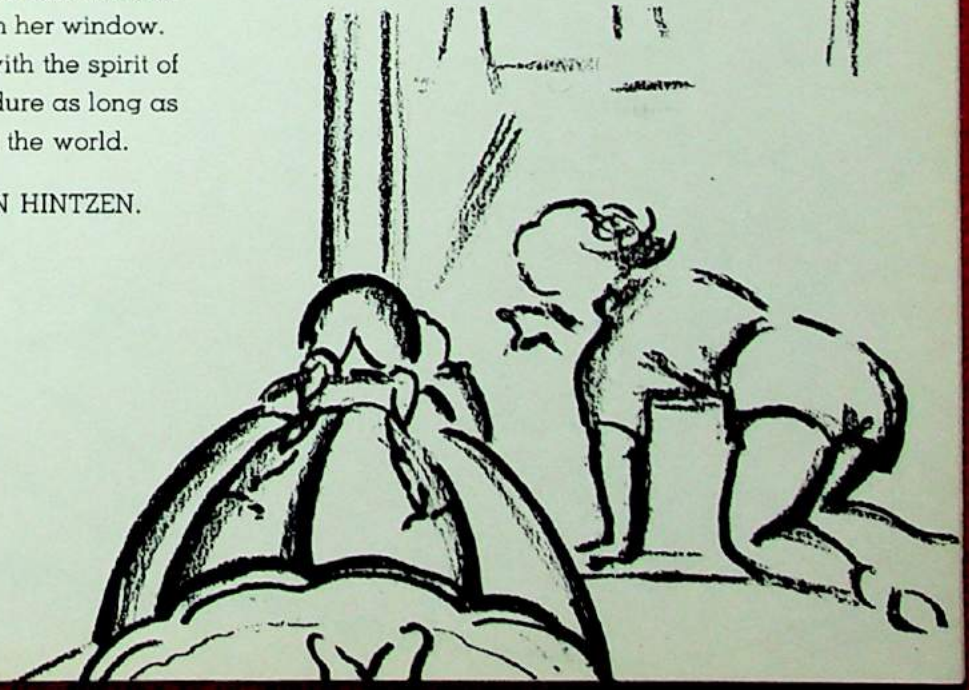
The long, narrow, beautifully stained windows of a church told her that she was getting nearer her destination. She stood before a stained glass image of Mary and her new born Son, and looking reverently up, crossed herself and her lips moved in silent prayer. Suddenly, realizing that a policeman across the street was watching her, she roused herself from her momentary visit with God and walked on.

The windows of the houses she passed were covered with steam, and here and there were some crude faces or animals drawn by tiny, artistic fingers on the frosty panes. As she saw them, a tender smile crossed her wrinkled, kind, old face and one felt as if she, too, understood the desire to create new ideas and build a life of comfort and happiness.

At the end of the lane stood a small brown cottage surrounded by fallen leaves from the stiff, barren trees which stood nearby. She opened the gate, walked up to the door and unlocked it with a tiny key. There was no fire in the fireplace, no child to draw creative pictures, no one to welcome her home after hours of tramping the streets; but she resolutely walked over to an old trunk in the corner, and, opening the lid that creaked with age, she drew from it a red wreath that is the symbol of Christmas to everyone, and placed it in her window.

She, too, was filled with the spirit of thankfulness that will endure as long as there are human souls in the world.

MARIAN HINTZEN.



Scenes From My Window

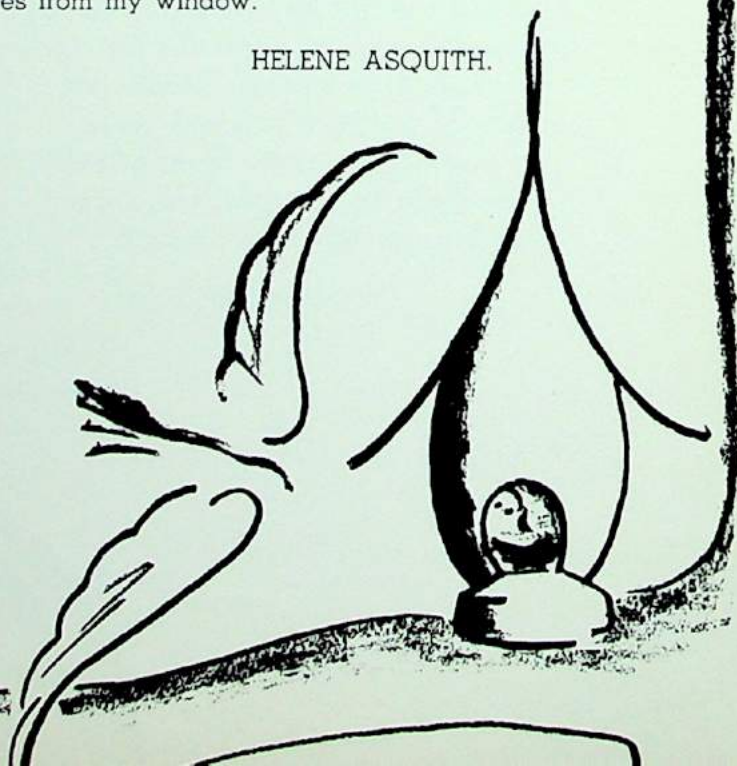
A scene from my window in summer—the lilac loaded with its lavender blossoms; the apple tree gayly decorated with pink petals which drift lazily down to cover the velvet grass; a sparrow darting from his nest under the eaves to fetch a tasty bit to fill the empty mouths he has left behind; skies as blue as forget-me-nots, with here and there a cotton cloud; two ragged, barefoot boys, poles over their shoulders and cans in their hands; beds of gentle pansies, stately hollyhocks, and proud nasturtiums—over all, warm, gentle sunshine.

Autumn—apple boughs weighed down by luscious burdens; the snowball and cherry radiant in robes of brown, saffron, and scarlet; a woodpecker tapping a tattoo on an old telephone pole; the chestnut laden with golden burrs; three shouting maids on roller skates; festive chrysanthemums; a small boy shuffling through the scattered leaves; tepid sunshine cuts the air of crystal clearness.

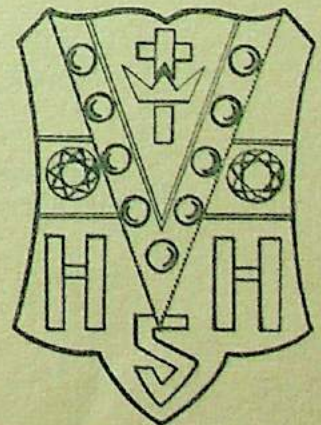
Winter—a blanket of white over all; trees lifting their naked boughs to a leaden, brooding sky; dry flower stalks bending with each windy blast; two lonely, ruffled chickadees eating from a perch in the cherry tree; rosy-cheeked youngsters, bundled in warm garments, bombarding one another with snowballs; a solitary, defiant leaf on a topmost branch of the apple tree, resisting all tugs of the relentless North wind—oh, it yields so reluctantly and the wind, with exultant glee, swirls it madly along the snowy ground.

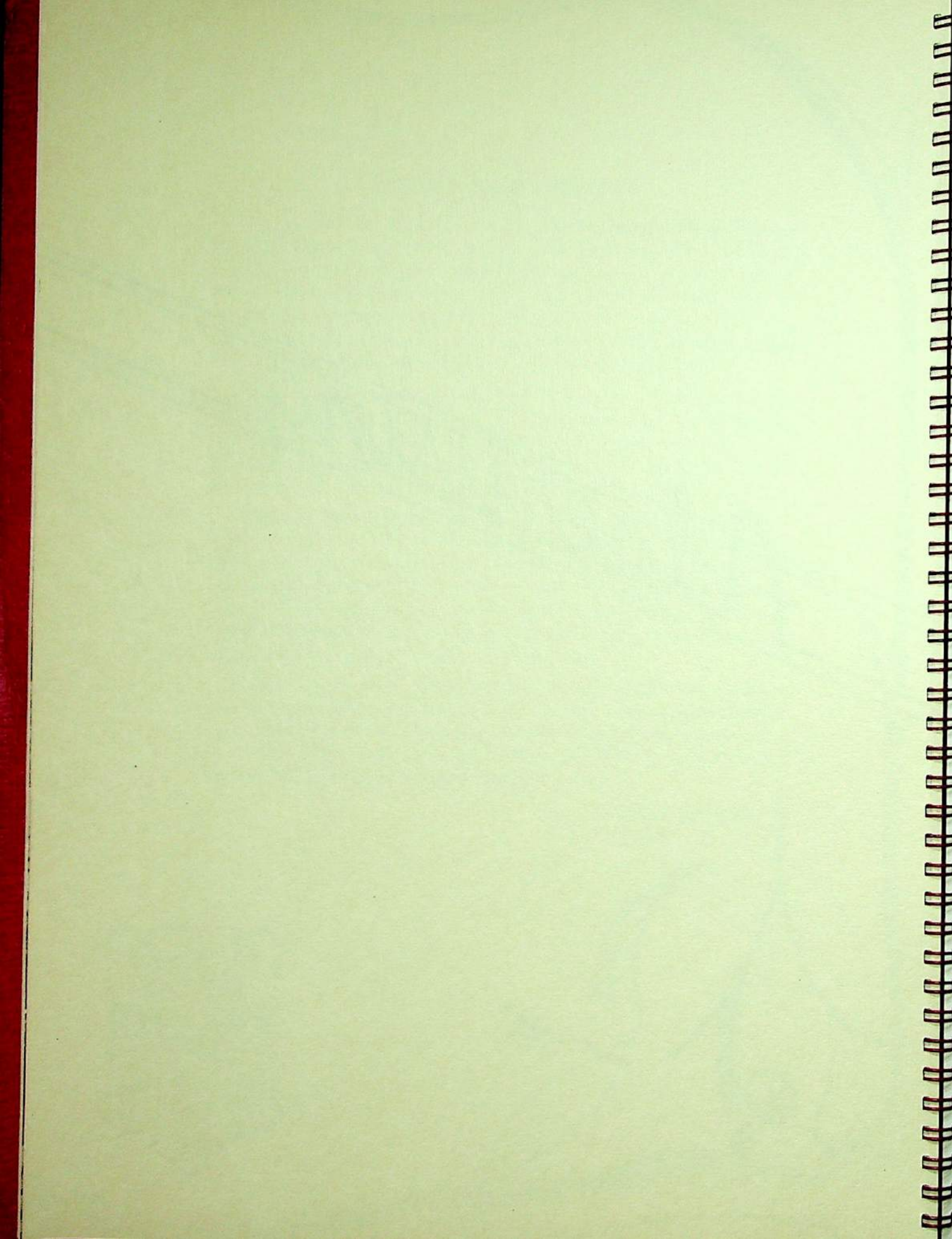
Spring—all the world alive once more; the lilac, vibrant with awakened pulses, covered with green buds; coy violets, radiant tulips, nodding daffodils; a boy, his eyes in the heavens, flying a kite that tugs impatiently to be free of his watchful hands; in the wet grass, a robin engaging in a tug-of-war with a juicy morsel; blustery skies—scenes from my window.

HELENE ASQUITH.



Advertising







VITAMIN

D

MILK

*Produced, Tested,
Pasteurized and Bottled
on Our Farm.*



ATwater 0428

ALPENROSE DAIRY

H. C. CADONAU, Proprietor



610 S. W. BROADWAY — FOURTH FLOOR

Compliments of
BEST DRUG CO.
1850 S. W. Tenth Ave.

MIRACLE WHIP SALAD
DRESSING

Created by
KRAFT-PHENIX CHEESE CORPORATION

PORTLAND ICE CREAM CO.

4224 S. E. Hawthorne Blvd.

Tabor 3022

Ice Cream for all Occasions

Compliments of
ENKE'S CITY DYE WORKS, Inc.
3 Locations Phone: EA. 4141

BEacon 6819

BEacon 6718

NEUBAUER'S

Grocery and Bakery

1735 S. W. 11th Avenue, Portland, Oregon

If it's Quality you like . . .

TRY THESE BARS

FROSKIST
ICE CREAM
COMPANY

Full House	P-Co
Chocolate	Frosty Cups
Vanilla	Creamsicles
Orange	Popsicles
Slices	Fudgicle
Jumbo	Sandwiches
	Lily Bars

A. W. Davis Supply Co.....BRoadway 2626, 2351 N. W. York St.
Portland Civic Theatre.....BEacon 1092, 4 N. W. 23rd Ave.
Lambs King Hill Grocery and Market.....2265 West Burnside St.
Oscar Auestad.....616 N. W. 22nd
King & Co. Millinery.....721 S. W. 10th Ave.

ST. HELEN'S HALL
CANDY AND SUPPLY
STORE

Opening Sept. 1939

•
For Your Convenience

Your

OWN COLLEGE STATIONERY
FAVORITE NOTEBOOKS
SCHOOL SUPPLIES
BOOK EXCHANGE

•
Complete Supply of
Candy

Portland's Own Store

Extends
Congratulations
to the Class of 1939 . . .



Meier & Frank Co.
Portland's Own Store

Dean Vincent Inc.



315 S. W. Fourth Avenue
PORTLAND, OREGON

*A Good Bank
for your
Savings Account*

The
UNITED STATES
NATIONAL BANK

Broadway and Sixth, at Stark
Member Federal Deposit Insurance Corporation

ATwater 0086



GENUINE
HUARACHES

*Hand Made
in
Mexico*

727 S. W. TENTH AVE., PORTLAND, ORE.
EMILY K. BARD
Manager

TOKIO SUKIYAKI

SUKIYAKI . TEMPURA

Phone ATwater 9900

Party and Banquet Rooms

224-8 N. W. 4th AVE., PORTLAND, ORE.

Fountain Lunch . Free Delivery . Prescriptions

Clameda Pharmacy
FOR SERVICE
24TH & FREMONT
PORTLAND, GA 5820 OREGON

Compliments of
SEALY-DRESSER CO.

LAING'S
Auctioneers and Appraisers

We Buy Furniture for Cash
or Sell on Commission

Beacon 1459 Cor. S. W. 9th & Yamhill

THE BUSH PHARMACY

Corner S. W. 11th and Montgomery

Prescriptions . Fountain . Magazines

Phone BEacon 6726 Portland, Oregon

★
Compliments of
OREGON GROCETERIA CO.



DAVE LEVINE CO.
Cleaners . Dyers . Hatters
2086 West Burnside Street
Call BEacon 7221

DAVIS BUTTON AND PLEATING
SHOP
734 S. W. Tenth Ave.
Letter Awards

Phonograph Records — Pianos Tuned
G. F. JOHNSON MUSIC CO.
1022 S. W. Morrison St. Portland, Oregon

Your Jeweler and Gift Counsellor
FRANK A. HEITKEMPER
STERLING . DIAMONDS . WATCHES
725 S. W. Alder St.

STROHECKER'S GROCERY
& MARKET
2855 S. W. PATTON ROAD
"One Call Does It All"

HOT HOUSES
Clarke Bros
BROADWAY
FLORISTS
FLOWERS FOR ALL OCCASIONS
BROADWAY NEAR MORRISON

•
Compliments of
GORDON G. STEELE
•

MRS. HOLMES BUSINESS
SCHOOL

A distinctive school, giving outstanding
individual instruction in successful
business practice.

SHORTHAND, BOOKKEEPING,
TYPING, BUSINESS ENGLISH, FILING,
CALCULATORS, OFFICE PRACTICE
EMPLOYMENT SERVICE

Register Now for New Term

8th Floor Studio Bldg.

BEacon 7745



*Our Congratulations and
Best Wishes
to the
June 1939 Graduating Class*

PORTLAND VAN & STORAGE CO.

407 N. Broadway, near Interstate

●

MODERN AND COMPLETE FIREPROOF STORAGE
FACILITIES AND A NATION-WIDE MOVING SERVICE
FOR HOUSEHOLD GOODS EXCLUSIVELY.

NIKKO

SUKIYAKI — CHOP SUEY — NOODLES
TEMPURA (FRIED SHRIMP)

Phone Broadway 3928

126 N. W. 4th Avenue, Portland, Oregon

Courtesy of

DURHAM, RYAN & DOWNEY, Inc.
PRINTERS-PUBLISHERS

ATwater 1954

718 W. Burnside Street, Portland, Oregon

Congratulations, Graduates!

Portland's 100% Union Department Store

ROBERTS BROS.

QUALITY MERCHANDISE . . . REASONABLY PRICED

"S & H" Green Stamp Redemption Station in our Downstairs Store

S. W. THIRD AVE. AT MORRISON ST.

PHONE ATWATER 3124



THE BANK OF CALIFORNIA

NATIONAL ASSOCIATION

Founded 1864

In Portland . . . S. W. Sixth Avenue and Stark Street

San Francisco :: Seattle :: Tacoma

MEMBER, F. D. I. C.



VACATION
with
a
CAMERA
from GILL'S!

Here's for a glorious summer . . .
and why not capture those fleeting
glimpses? Take along a camera
. . . a good one from Gill's will
assure you of clear, sharp snap-
shots!

Expert
FILM DEVELOPING
and PRINTING!

The J. K. GILL Co.
S. W. Fifth Avenue at Stark Street

Always Exceptional Food at

HENRY THIELE'S

•
TWENTY-THIRD AT BURNSIDE

Best Wishes of . . .

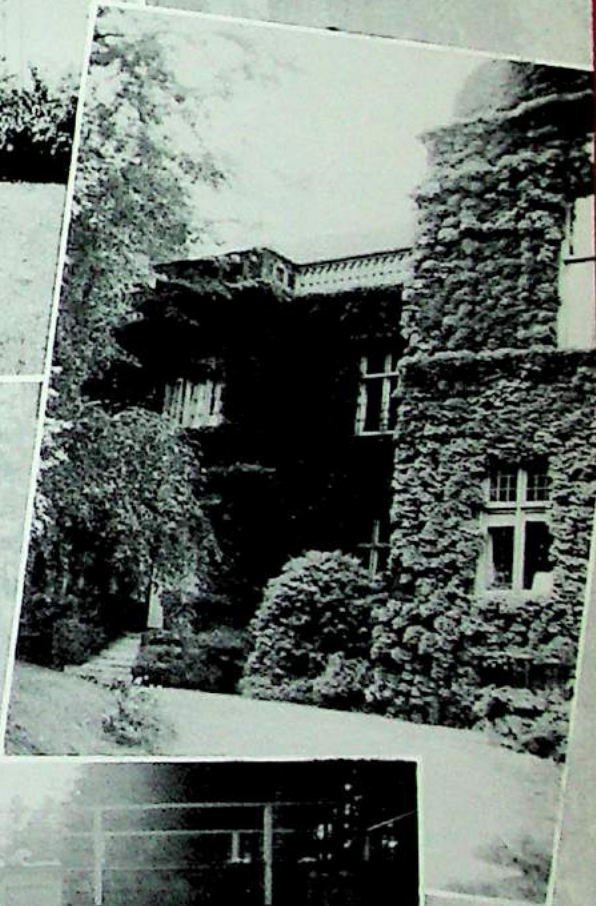
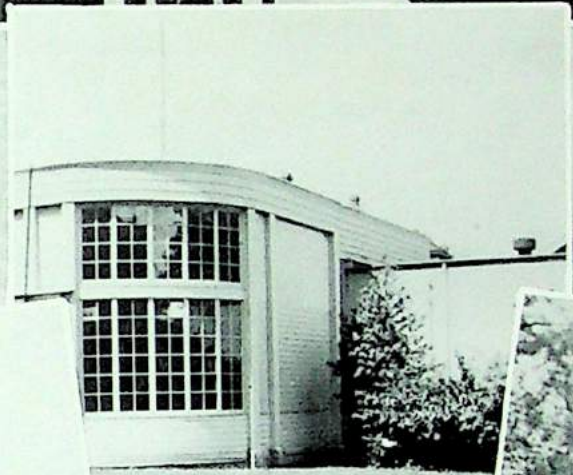
G. WESTALL DEACON

Studio

YOUR PHOTOGRAPHER

2313 N. W. LOVEJOY

BEacon 7803



Autographs





