



1717-18

ST. HELEN'S HALL

PORTLAND, OREGON

Resident and Day School for Girls

UNDER THE AUSPICES OF

THE EPISCOPAL CHURCH

IN THE DIOCESE OF OREGON



FORTY-SIXTH YEAR



"That our daughters may be as the polished corners of the temple."



"Education is the end to be attained. Instruction is one of the means. Instruction provides the mind with the knowledge of certain things; Education forms at the same time the understanding, the heart, the character and the conscience."

FELIX DUPANLOUP.

Board of Trustees of St. Helen's Hall



THE RT. REV. CHARLES SCADDING, D.D., BISHOP OF OREGON, Chairman

THE REV. A. A. MORRISON, PH. D.

JOHN KOLLOCK

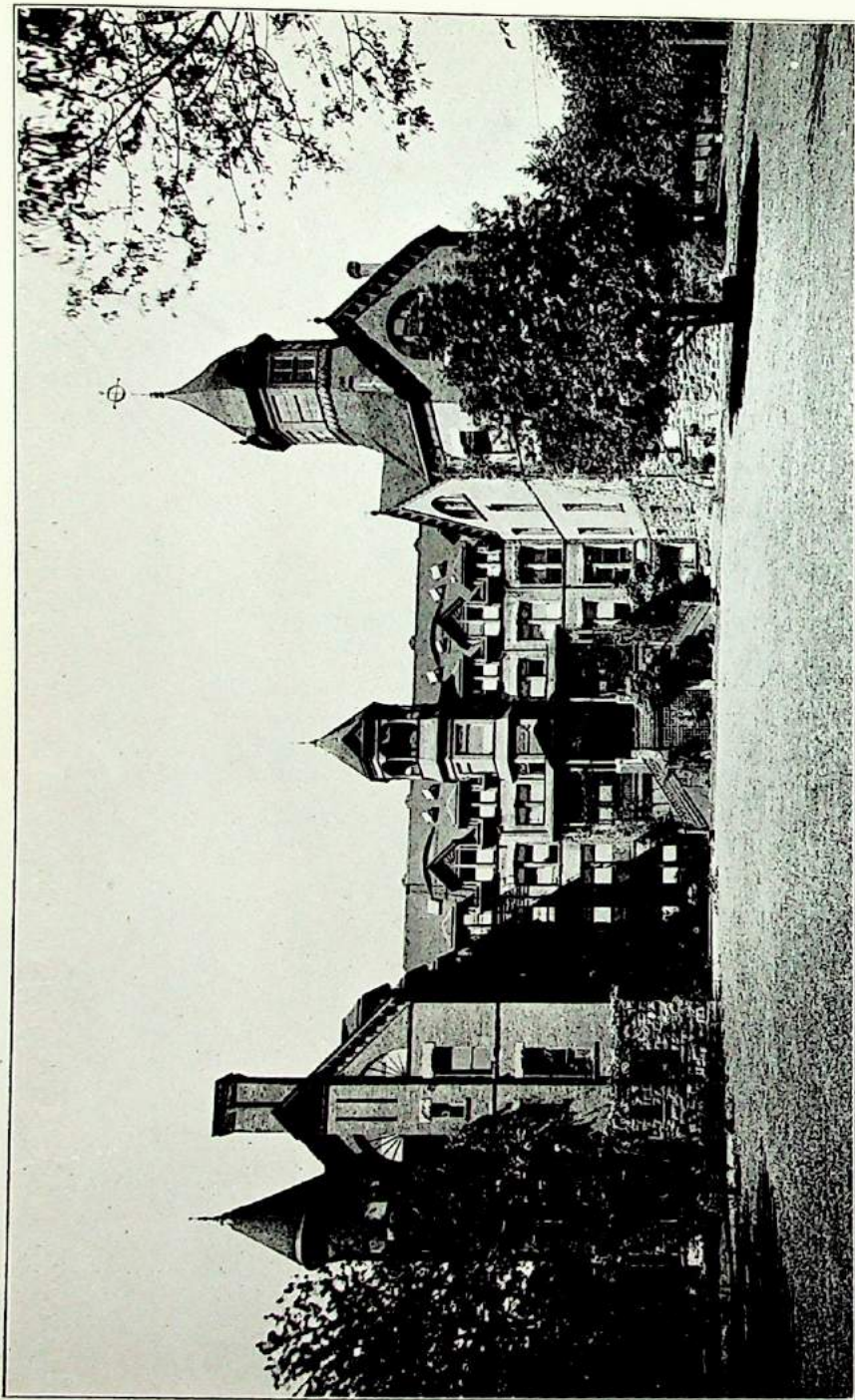
THE REV. JOHN DAWSON.

H. B. LEONARD

THE REV. H. D. CHAMBERS.

C. B. PFÄHLER

JOHN KOLLOCK, *Secretary*



ST. HELEN'S HALL, EAST FRONT



SAINT HELEN'S HALL was established by the Rt. Rev. B. Wistar Morris, D. D., and opened September, 1869, with Miss Mary B. Rodney as Principal. The ground upon which the school was first built was secured through the liberality of Mr. John D. Wolfe and his daughter, Miss Catharine Wolfe, of New York City,

whose large hearted generosity should ever be remembered in recalling the early history of this institution. The school continued its work in the original building on Fourth Street, between Madison and Jefferson, until the year 1890, when the property was sold to the City of Portland, for the use of the City Hall. On the 9th of June of that year, the corner stone of the present large and commodious building was laid, and on the 24th of February, 1891, the school was moved to its new home.

Miss Mary Rodney died April 15th, 1896, and the work was carried on by her sisters the Misses Rodney until the close of the school year. At the opening of the next year, Miss Eleanor Tebbetts, Ph. D., became principal and remained in that office till the end of June, 1904.

By request of the Board of Trustees, the Sisters of St. John Baptist (founded at Clewer, England, in 1851, and affiliated in this country in 1881) then undertook the charge of the school and trust that God will continue to bless their endeavors for its prosperity and increased usefulness.

Officers and Instructors

1913-1914



THE RIGHT REVEREND CHARLES SCADDING, D. D., BISHOP OF OREGON
Rector

THE REV. W. A. M. BRECK
Chaplain

THE SISTERS OF ST. JOHN BAPTIST
General Superintendence, Holy Scripture, Church History

Miss Grace A. Pierce
(Wellesley College)
GREEK AND LATIN

Miss Eleanor Abbott
(Smith College)
MATHEMATICS

Miss Marion DeForest
(Wilson College)
ENGLISH AND HISTORY.

Miss Laura G. Eaton
(Cheltenham Ladies' College)
(University of London)
SCIENCE AND HISTORY

Miss Ruth Merrill
ELOCUTION AND ENGLISH

Miss Emily J. Griffin
PHYSICAL CULTURE

Mademoiselle Hercent
Diplomee
FRENCH

Miss Evangeline Breck
FRENCH

Madame Anna Jacques
GERMAN

Miss Ethelinde Bridgham
(New England Conservatory)
PIANO

Miss Maude Gessner
(New England Conservatory)
PIANO

Miss Edith Clark Patterson
(New England Conservatory)
VOCAL MUSIC

Mrs. Bernard Schermerhorn
(Pupil of Albert Ross Parsons)
PIANO

Miss Ellen Ravenscroft
(Chase School of Art, New York)
ART

Miss Ella Acheson
ELEMENTARY DEPARTMENT

Miss Helena Kiersted
ELEMENTARY DEPARTMENT

Miss Leonide Fleury
ELEMENTARY DEPARTMENT

Calendar

1914-1915

- June 6, 1914. Reunion of Almanac.
June 14, 1914. Baccalaureate Sunday.
June 15, 1914. Commencement.
14 Sept. ~~17~~ 1914. Forty-fifth year begins.
Nov. 26, 1914. Thanksgiving Day.
Dec. 18, 1914. Christmas Vacation begins—3 p. m.
Jan. 4, 1915. Christmas Vacation ends—9 a. m.
Feb. 22, 1915. Washington's Birthday.
April 2, 1915. Good Friday.
April 4, 1915. Easter Day.
April 9, 1915. Easter Vacation begins—3 p. m.
April 19, 1915. Easter Vacation ends—9 a. m.
May 30, 1915. Memorial Day.
June 14, 1915. Commencement.

History

The study of History is begun in the Elementary Department and continued to the end of the school course. In the College Preparatory Course it is necessarily limited to college requirements, which, however, are constantly increasing both as to quantity and quality. In the General Course three courses of History are provided. The topical method is approved, collateral reading is encouraged. Maps are drawn, and historical geography is held to be an important part of the work. History and English are intimately associated; pupils being required to commit to memory historical poems, and to write compositions on subjects drawn from historical lessons. The school is fortunate in possessing a fairly good though small library of history and literature bearing upon it.

Mathematics

"In teaching mathematics the aim is to develop the spirit of enquiry, the habit of accuracy in reasoning, and the love of truth." (Cambridge School Manual.)

The prescribed course comprises Arithmetic, Algebra, Plane and Solid Geometry.

Throughout the course original work is encouraged, and set rules are avoided. The pupils are encouraged to rely as little as possible upon text books.

Science

This department is conducted in accordance with the best scientific methods. Natural History is taught in connection with Geography in the Elementary Department. In the Academic Department the subjects are taken up as indicated in the course of study. Laboratory work is required of all students of Chemistry and Physics, and the use of the microscope of all

students of Botany and Physiology. It is considered that one or two sciences each thoroughly studied for not less than one year will do more for the pupil's intellectual development than a large amount of superficial work.

A course in Domestic Science including Hygiene, Household Sanitation and Chemistry of Foods is offered.

Physical Culture

St. Helen's Hall has a large gymnasium, and a trained teacher is in charge of the gymnasium work. In the Elementary Department there are easy drills several times in the week. In the Academic department each class has two morning periods a week for light work such as marching, club swinging, folk dances, etc., and every pupil is required to be in one afternoon class for either æsthetic dancing or games. An exhibition to which the parents and other friends are invited, is held every spring, at the conclusion of the year's work.

Religious Instruction

All pupils receive instruction in Holy Scripture, Church Catechism and the History of the Church, and attend the daily services in the Chapel of the School. Resident pupils attend service on Sunday morning in one of the city churches.

A special advanced course in preparation for Church work is offered.

Special Students

Special students in Music, Art or Elocution may be received as resident, when there is room for them, but the preference will be given to pupils in the regular course. No one will be received as a special student without having first completed a high school course of study or its equivalent. The terms for special students are the same as for regular students.

Course of Study

Elementary Department

FIRST YEAR.

ENGLISH. Reading, Writing, Spelling, Language Lessons, Art-Literature Primer. Folk Lore Primer. Folk Lore First Reader. Art Literature First Reader. Sherman's "Little Folk Lyrics." Bass' Nature Stories.

ARITHMETIC. Combinations to 20.

FRENCH. Conversation.

SECOND YEAR.

ENGLISH. Reading, Writing, Spelling, Language Lessons. Folk Lore Second Reader. Art-Literature Second Reader. McMurry's "Robinson Crusoe."

ARITHMETIC. Nichol's—Book I.

GEOGRAPHY. Sand maps. Pictures and stories of different lands.

FRENCH. Conversation.

THIRD YEAR.

ENGLISH. Reading, Writing, Spelling. Kittredge and Arnold's Mother Tongue, Book I. Art Literature, Third Reader. Cyr's Third Reader. Stevenson's Child's Garden of Verse. Eggleston's "Stories of American Life and Adventure." Carrol's "Alice in Wonderland." Selections.

ARITHMETIC. D. E. Smith's Primary Arithmetic.

GEOGRAPHY. Sand Maps. Map Drawing. Geographical Reader.

FRENCH. Conversation and Reading.

FOURTH YEAR.

ENGLISH. Reading, Writing, Spelling. Kittredge and Arnold's Mother Tongue—Book I. Cyr's Fourth Reader. Longman's Fourth Reader. Kingsley's "Waterbabies." Ruskin's "King of the Golden River." Whittier's Child Life.

ARITHMETIC. Smith's Primary Arithmetic.

GEOGRAPHY. Tarr and McMurry. Leete's Exercises.

HISTORY. Stories from English History.

FRENCH. Conversation and Reading.

ST. HELEN'S HALL

FIFTH YEAR.

ENGLISH. Reading, Writing, Spelling, Elocution. The Mother Tongue—Book II. Hawthorne's Wonderbook and Tanglewood Tales. Whittier's Child Life. Church's Story of the Iliad. Selections from Longfellow, Scott, Tennyson, etc.

ARITHMETIC. Smith's Grammar School Arithmetic.

GEOGRAPHY. Tarr and McMurry.

HISTORY. American History. Stories from Ancient History.

FRENCH. Grammar and Reading.

SIXTH YEAR.

ENGLISH. Reading, Writing, Spelling, Elocution. The Mother Tongue—Book II. Irving's "Sketch Book." Hawthorne's "Twice Told Tales." Burrough's "Birds and Bees and Sharp Eyes." Lang's Blue Poetry Book. Selections.

ARITHMETIC. Smith's Grammar School Arithmetic.

GEOGRAPHY. Tarr and McMurry. Leete's Exercises.

HISTORY. American History. Stories from Modern History.

FRENCH. Grammar and Reading.

SEVENTH YEAR.

ENGLISH. Whitney and Lockwood's Grammar, Elocution.

ARITHMETIC. General Review. Metric System.

SCIENCE. Physical Geography.

HISTORY. English History.

FRENCH. Grammar and Reading or German or Latin begun.

IN ALL GRADES. Physical Culture, Sight Singing, Drawing, Painting, Needlework, Nature Study, Bible History, Church History, Catechism.

While a seven years' course of study is provided, there may be special cases in which a child may accomplish the required work in six years. On the other hand, it may more frequently occur that a slow or delicate child will need eight or nine years to cover the same ground. In every case the course must be fitted to the pupil, not the pupil to the course. No pupil may be promoted to the Academic Department without thoroughly accomplishing the required elementary work.

Academic Department

College Preparatory Course.

FIRST YEAR.

WEEKLY PERIODS.

Required Studies—

ENGLISH. Grammar, Composition, Reading.	5
LATIN. D'Ooge's First Book	5
FRENCH. Squair and Fraser's Grammar. Contes et Legendes, Sans Famille.	5
MATHEMATICS. Algebra.	5
SACRED STUDIES. Bible History.	2
	22

SECOND YEAR.

Required Studies—

ENGLISH. Rhetoric, Composition, English Literature.	5
LATIN. Cæsar, Nepos, Grammar, Prose Composition.	5
FRENCH. Squair and Fraser's Grammar, La Cigale chez les Fourmis. Mon Oncle et Mon Cure.	5
MATHEMATICS. Algebra—Plane Geometry.	5
SACRED STUDIES. Old Testament History.	2
	22

General Course.

FIRST YEAR.

WEEKLY PERIODS.

Required Studies—

ENGLISH. As in College Preparatory Course.	5
HISTORY. English and American, or	5
FRENCH. As in College Preparatory Course.	5
MATHEMATICS. As in College Preparatory Course.	5
SACRED STUDIES. As in College Preparatory Course. And one Elective.	2
<i>Elective Studies—</i>	
ELOCUTION.	2
MUSIC.	2
ART.	2
DOMESTIC ART.	2
	19

SECOND YEAR.

Required Studies—

ENGLISH. As in College Preparatory Course.	5
FRENCH. As in College Preparatory Course.	5
MATHEMATICS. As in College Preparatory Course.	5
SACRED STUDIES. Old Testament History. And one or two Electives.	2
<i>Elective Studies—</i>	
GERMAN. Grammar, Reading.	4
ELOCUTION.	2
MUSIC.	2
ART.	2
DOMESTIC ART.	2
	19 to 21

Academic Department.

College Preparatory Course.

THIRD YEAR.

WEEKLY PERIODS-

Required Studies—

ENGLISH. History of Literature. Composition, Study of English Authors.	5
LATIN. Cicero, Prose Composition.	5
MATHEMATICS. Plane and Solid Geometry.	5
SACRED STUDIES. New Testament History. And one Elective.	2

Elective Studies—

FRENCH. Grammar, Scenes de la Revolution Francaise, Mademoiselle de la Segliere, Composition	5
GREEK. Grammar, Reading	5
GERMAN. Grammar, Guerber No. 1 and 2.	4

21 to 22

FOURTH YEAR.

WEEKLY PERIODS-

Required Studies—

LATIN. Ovid, Vergil, Prose.	5
HISTORY. Greece and Rome.	5
SACRED STUDIES. Church History. And one or two Electives.	2

Elective Studies—

FRENCH. Composition, History, Classic Reading.	5
GREEK. Xenophon, Prose Composition.	5
GERMAN. Grammar, Imensee, Der Zerbrochene Krug, Minna Von Barnhelm.	4
SCIENCE. Botany or Physics.	5

17 to 22

General Course.

THIRD YEAR.

WEEKLY PERIODS-

Required Studies—

ENGLISH. As in College Preparatory Course.	5
FRENCH. As in College Preparatory Course.	5
MATHEMATICS. Plane and Solid Geometry.	5
SACRED STUDIES. New Testament History. And one or two Electives.	2

Elective Studies—

GERMAN.	4
ELOCUTION.	2
MUSIC.	2
ART.	2
DOMESTIC ART.	2

19 to 21

FOURTH YEAR.

WEEKLY PERIODS-

Required Studies—

ENGLISH. Study of English Authors, Composition.	5
FRENCH. As in College Preparatory Course.	5
HISTORY. Greece and Rome.	5
SACRED STUDIES. Church History. And one Elective.	2

Elective Studies—

SCIENCE. BOTANY. PHYSIOLOGY. DOMESTIC SCIENCE.	5
GERMAN. Grammar, Translation.	4
ELOCUTION.	2
MUSIC.	2
ART.	2

19 to 22

Academic Department.

College Preparatory Course.

FIFTH YEAR.

WEEKLY PERIODS.

<i>Required Studies—</i>	
ENGLISH. Study of English Authors. Composition.	5
MATHEMATICS. Review, Algebra. Geometry.	2
LATIN. Virgil, Sallust.	5
SACRED STUDIES. Church History.	2
And one or two Electives.	
<i>Elective Studies—</i>	
FRENCH. Literature, Classic Reading.	5
GREEK. Homer, Prosody.	4
GERMAN. Grammar, Classic Reading.	4
SCIENCE. Physics or Chemistry.	5

18 to 24

General Course.

FIFTH YEAR.

WEEKLY PERIODS.

<i>Required Studies—</i>	
ENGLISH. History of English Literature 19th Century Authors.	5
HISTORY. Mediæval and Modern History.	5
SACRED STUDIES. Church History.	2
And two Electives.	
<i>Elective Studies—</i>	
FRENCH. Literature, Classic Reading.	5
SCIENCE. Physics or Chemistry or Domestic Science.	5
GERMAN. Harris German Composition. Die Harzreise. Sesenheim Schiller's Ballads, Etc.	4
ELOCUTION.	2
MUSIC.	2
ART.	2

18 to 22

In both courses 20 credits are required for graduation—each credit representing a year's work in the Academic Department, with five weekly recitations—or two years' work with fewer recitations. Gymnasium work, two periods a week is required of all pupils for four years and counts as one credit. No credit will be given for less than two years' work in any language. German may be substituted for French throughout the course. Pupils may enter any class for which they are prepared, but the Diploma of St. Helen's Hall is not given for less than two years' attendance.

College Preparatory.

<i>Required—</i>	
LATIN.	4 or 5
ENGLISH.	4 or 3
MATHEMATICS.	3
SECOND LANGUAGE.	2 or 3
SACRED STUDIES.	2
HISTORY.	1
THIRD LANGUAGE.	} 3 or 2
Or SCIENCE.	
Or HISTORY.	
PHYSICAL CULTURE.	1

20

General Course.

<i>Required—</i>	
ENGLISH.	5
HISTORY.	2
MODERN LANGUAGES.	4
MATHEMATICS.	3
SACRED STUDIES.	2
SCIENCE	1
MUSIC, ART, ELOCUTION	OR
OTHER ELECTIVES.	2
PHYSICAL CULTURE.	1

20

Collegiate Department

FIRST YEAR.

WEEKLY PERIODS.

Required Studies—

ENGLISH. Review of Rhetoric. Themes. English Literature. 5.

MATHEMATICS. Higher Algebra. Trigonometry. Solid Geometry 5

SACRED STUDIES. General Review of Old and New Testament History and Church History 2
Or, Study of St. John's Gospel 2

Elective Studies—

LATIN. Cicero. De Senectute and De Amicitia. Horace. Selections. Prose Composition

PSYCHOLOGY.

HISTORY OF ART.

GREEK. Language and Literature.

FRENCH. Language and Literature.

GERMAN. Language and Literature.

SECOND YEAR.

Required Studies—

SACRED STUDIES. Course of Church Doctrine and History of the Prayer-Book, or, Study of the Psalms and Isaiah 2

Elective Studies—

ENGLISH. Literature of the seventeenth and eighteenth centuries.

MATHEMATICS. Analytic Geometry.

LATIN. Livy. Tacitus, Selections. Prose Composition.

HISTORY. General, Mediæval and Modern History; or History of England or of the United States.

GREEK. Language and Literature.

FRENCH. Language and Literature.

GERMAN. Language and Literature.

Most of the work in this Department is elective, but to receive a certificate a two years' course, approved by the Sister Superior and amounting to nine credits must be accomplished.

No credit will be given for Elementary work in French or German, or for College Preparatory work in Latin.

Training Course for Church Workers

FIRST YEAR.

Old Testament History and Interpretation, New Testament History and Interpretation, General Church History, Missions, Church Doctrine. The care of the Altar and the making of Altar linen.

SECOND YEAR.

Special studies in the Old Testament, the Psalms, the Prophecies. Special studies in the New Testament, the Gospel of St. John or the Epistles. English and American Church History, History of the Prayerbook, Church Doctrine, Religious Pedagogy, Church Music.

This course is planned for girls who desire to become intelligent church women, properly qualified to work in their own parishes or in missions. To enter upon it a high school course or the equivalent is necessary. Graduates of St. Helen's Hall, who have completed the required course in Sacred studies are prepared to enter upon the second year's work. Others will need two years of serious study, with much side reading.

At the completion of the course a special diploma, signed by the Bishop, will be given.

Elocution and Voice Culture

The aim of the instruction in this department is to grasp and express the thoughts of great minds. Especial attention is paid to the use of the speaking voice and to reading aloud. Recitation and the use of gesture are also taught and exercises in correct breathing and physical culture given.

A certificate will be given at the close of a satisfactory course of two or more years.

Music

The Department of Music comprises instruction in piano, voice, violin, musical theory, elementary harmony, sight singing and history of music. A systematic course in piano, violin or vocal music will be allowed to count for graduation as an elective study in the General course.

Portland offers many opportunities for hearing the best music; during the past year the pupils have attended concerts by Melba, Carreno, Kreisler, Schumann-Heink, Gerardy and others. Pupils desiring to receive Diplomas in the Music Department must complete a course of study in the Academic Department amounting to 10 credits in History, English and Modern Languages.

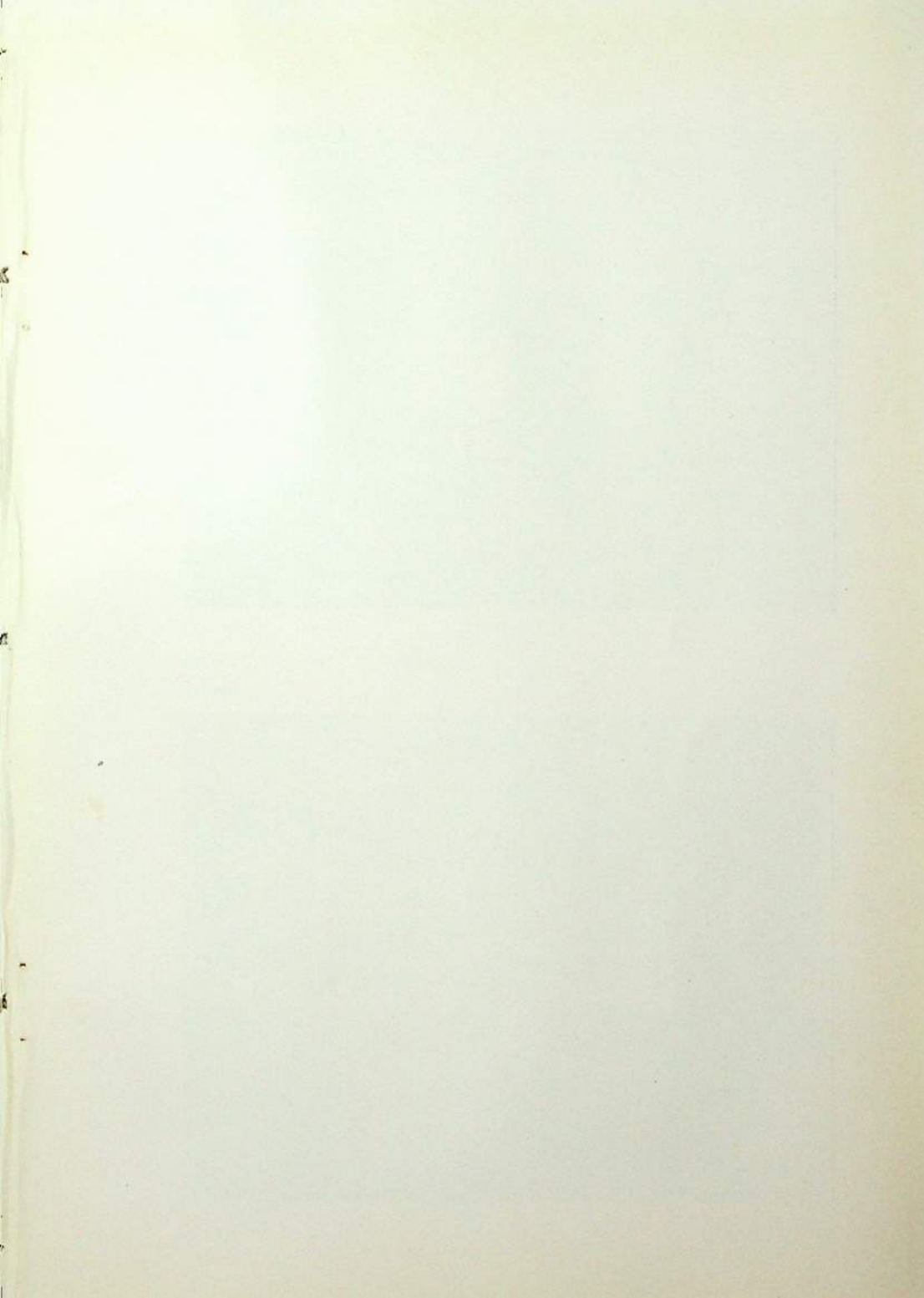
Piano Department

In order that pupils may form a comprehensive idea of Pianoforte music they are required to study a repertoire including pieces by the following composers: Bach, Handel, Scarlatti, Mozart, Haydn, Beethoven, Schubert, Schumann, Mendelssohn, Chopin, Liszt,—also compositions by modern composers, Brahms, Grieg, Tschaiakowsky, MacDowell, etc. The technical work of the Piano Department is drawn from such sources as Bach, Heller, Czerny, Stasny, Leschetiszky, Kohler, Duvernoy and others.

Candidates for graduation must be able to pass an examination over technical exercises, all forms of scales, arpeggios, double thirds and octaves. At this examination studies by Bach and from Czerny Op. 740, and at least three pieces from memory by different composers will be required, besides a given piece which must be performed after a week's study without aid of the instructors.

Before graduation the pupil is required to give a public recital of works memorized including a concerto and a selection of compositions which shall show skillful execution and thoughtful interpretation.

A diploma will be awarded at the satisfactory completion of the course.





STUDY HALL



DINING HALL

Outline of Pianoforte Course

(In the case of the average pupil who has attained the age of 12 years, the minimum time for completing the work prescribed in each of the following divisions is estimated as two years.)

ELEMENTARY—

Finger exercises, scales, studies, etc. Sonatinas and pieces from Schumann's *Kinderscenen*, Scharwenka's *Album for the Young*, etc.

Elementary theory of music.

INTERMEDIATE—

All forms of technical exercises, scales, arpeggios, double thirds, octaves. Studies by Heller, Czerny and others. Pieces by Mozart, Haydn, Bach, Schubert, Beethoven, etc.

Theory of music: Harmony.

ADVANCED—

Studies by Heller, Czerny, Cramer. Pieces by Bach, Beethoven, Chopin, Schumann, Liszt and modern composers, including one concerto.

Harmony and Harmonic Analysis; Pianoforte Sight-playing; Musical History.

Vocal Department

The aim of the vocal department is the development of the voice by a pure and natural method of tone production. All studies are selected according to the individual needs of the pupil, and songs are taken from the old composers and the best modern music.

All voice pupils will be required to attend the Choral Classes, in which they receive instruction in class singing and sight reading, unless excused by the head of the department.

Candidates for graduation in this department must be able to sing sustained tones, intervals, scales (major, minor and chromatic), the advanced studies of Panofka, Lutgen, Aprile, etc., and songs in Italian, French and English, including simple arias.

They must also have completed the course in Theory, Musical History, Elementary Harmony, Sight-singing, and must be able to play moderately difficult accompaniments.

Before receiving a Diploma the pupil must perform a given piece after one week's study without the aid of the instructor, and must be prepared to give a whole recital in public.

Outline for Vocal Course

ELEMENTARY—

Exercises for breathing, tone production and voice placing.

Simple studies, such as Panofka A. B. C.

First grade songs.

Simple Theory.

Elementary Piano.

INTERMEDIATE—

Vannuccini Exercises for Voice Placing.

Panofka Studies Op. 85 and 81 for Phrasing.

Moderately difficult songs.

Elementary Harmony.

Pianoforte.

ADVANCED—

Advanced studies for technique.

Lutgen, Aprile, etc.

Songs and arias from Oratorio and Opera.

Musical History.

Sight singing.

Art

Art instruction embraces pencil, crayon, charcoal, sepia and India ink, and painting in oil and water colors. The studio is well supplied with casts and still life, and affords every advantage for the serious study of drawing and painting.

Work in the Studio for one period weekly is required of all pupils in the Elementary Department. In the Academic Department the Art Courses are elective, and so arranged as to meet the needs of students who have much or little time. They include problems in theory and practice of design, representation and composition.

The Art History Courses aim to make the pupil familiar with the art of the past, to cultivate a feeling for beauty and develop a power of discrimination that will lead to a keener appreciation and enjoyment of that which is truly great in Art.

Elementary Department

FIRST, SECOND AND THIRD YEARS.

Colored crayon drawings of flowers, leaves, trees, etc. Illustrations of Thanksgiving and Christmas stories. Cut forms, star, holly leaf used for decoration. Color studies in three values.

FOURTH AND FIFTH YEARS.

Drawing of leaves and flowers, pencil and brush, flat washes, arrangements and foreshortening especially considered. Drawing from memory. Three tone drawings. Color scales. Perspective of rectangular and circular objects. Color harmony. Book cover design. Landscape composition in flat tones.

SIXTH AND SEVENTH YEARS.

Sketches of flowers from nature in color. Design of initial letters. Calendar. Costume poses, figures in ac-

tion. Landscape and flower drawing in color. More advanced composition.

Advanced Drawing Class

Drawing in pencil, charcoal, pen and ink, water color or oil from casts and from life. Figure and landscape composition.

All pupils are allowed to be in the Sketch Class. When the weather permits, the class will draw landscapes in black and white or color. On Tuesday there is a Life Class for which a model is engaged; on Saturday morning the pupils pose for each other. Portland possesses an excellent Art Library, which the pupils visit as often as desired.

The Art History Class

ARCHITECTURE

Egyptian	Byzantine
Greek	Saracenic
Roman	Gothic

SCULPTURE

Egyptian	Roman
Assyrian	Mediæval, French
Persian	German, Italian
Phoenician	Modern, Italian, French
Greek	German, English, American

PAINTING

Italian School	Dutch School
French "	German "
Spanish "	English "
Flemish "	American"

The Home

The home life of St. Helen's Hall is that of a well regulated household, in which the general tone is wholesome and happy. A Sister, assisted by the resident nurse, has the care of the pupils' health. Especial attention is paid to manners and bearing, and exercises in the Gymnasium form part of the daily routine. Each girl is required to obtain from her family physician a certificate of physical fitness before taking part in any game (such as basket ball), requiring violent exercise. A riding school near by furnishes horses and groom at a moderate charge for small riding parties. The resident teachers co-operate with the Sisters to make home life attractive and helpful. One evening in each fortnight is given to lectures, musicales and social gatherings in the reception room. Dancing, indoor games and all girlish amusements are encouraged.

A short list of correspondents and visitors is required signed by parent or guardian. Letters addressed to others than those on the list will be forwarded unopened to parents or guardians.

No bills will be paid for pupils nor money advanced to them unless a deposit has been made for that purpose and pupils are not allowed to have running accounts at any store in the city.

A monthly allowance is recommended as tending to give a young girl a proper sense of the value of money and responsibility in the use of it.

During the term no pupil will be allowed to pass a night in town out of the school building except with her parents or near relatives. Pupils may not visit anywhere without the written consent of parents or guardians. They may

receive their friends on Saturday afternoons. Visitors will not be admitted on Sunday except parents and members of the immediate family. Strangers must bring a letter of introduction from parents or guardian. Visitors may not ascend the stairs without permission.

The pupils will be allowed to visit on Saturday those friends in the city whom the parents may designate, provided those friends accompany them to and from the school, and the conduct of the pupil has been so satisfactory that they are entitled to the privilege. Pupils residing in Portland or its immediate vicinity will be allowed once in each month to spend Saturday and Sunday at home.

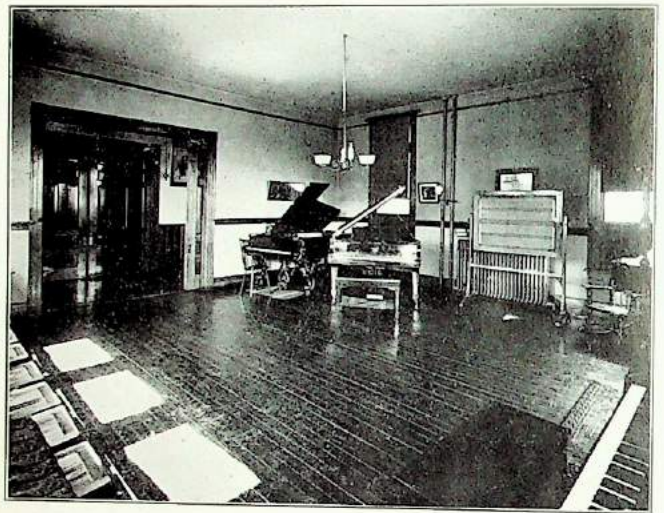
Magazines and telegrams will not be delivered unless approved. Newspapers are not allowed.

It is requested that no books be brought into the school. All textbooks are provided, and there is sufficient reading matter in the School Library.

Family photographs and a few framed pictures are allowed in the pupils' rooms, but not posters or advertisements.

It is desired that all bedroom decorations be simple hygienic.

Pupils are expected to dress neatly and simply. A plain skirt with blouse waist for school, a cloth suit for Sunday and street wear, an afternoon dress of some light woolen or mixed material and a white muslin dress (high-necked and long sleeved) for musicals will meet all requirements. Neither dresses nor waists of laundered goods are allowed from November 1 to April 1, nor dresses of wash material for the school room at any time. High shoes with low heels are required for outdoor wear. Expensive jewelry is not allowed. All school dresses must be high-necked and long sleeved. Elbow sleeves are allowed on afternoon



MUSIC ROOM



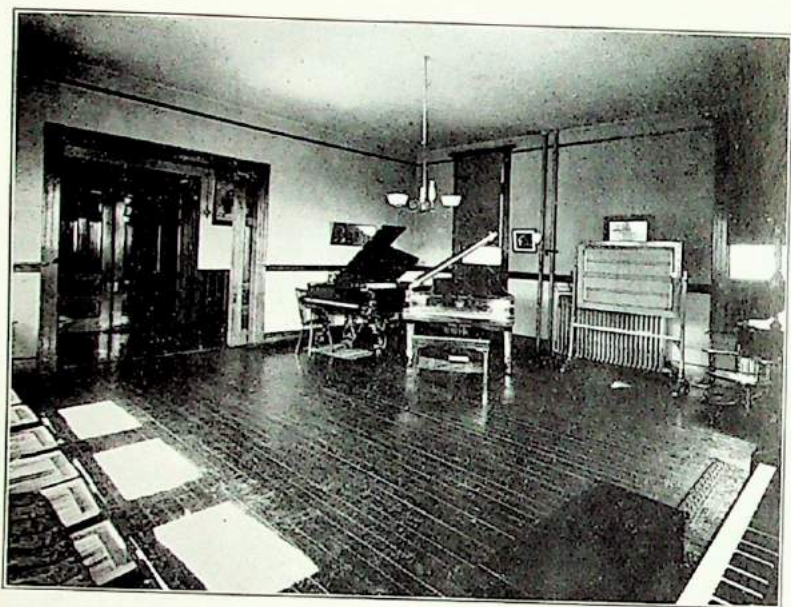
ENTRANCE HALL

gowns only. All members of the school dress for dinner. It is requested that all dress-making and dentistry be attended to at home.

Pupils are not allowed to make dressmaking or shopping visits in town or visits to the dentist without a chaperone. A charge of fifty cents an hour will be made for chaperonage.

Requests from parents and all business communications should be sent directly to the Sister Superior and not through the pupil.

The number of resident pupils is limited to fifty. The intention is to have the school family consist of earnest girls who will cheerfully adapt themselves to such regulations as are found necessary. No pupil who shows herself impatient of control, or whose general tone and influence is harmful, can be permitted to remain in the Hall.



MUSIC ROOM



ENTRANCE HALL

gowns only. All members of the school dress for dinner. It is requested that all dress-making and dentistry be attended to at home.

Pupils are not allowed to make dressmaking or shopping visits in town or visits to the dentist without a chaperone. A charge of fifty cents an hour will be made for chaperonage.

Requests from parents and all business communications should be sent directly to the Sister Superior and not through the pupil.

The number of resident pupils is limited to fifty. The intention is to have the school family consist of earnest girls who will cheerfully adapt themselves to such regulations as are found necessary. No pupil who shows herself impatient of control, or whose general tone and influence is harmful, can be permitted to remain in the Hall.

School Lectures and Entertainments

1913-1914

October.—Welcome party by the "Old Girls" to the "New Girls."

November.—Dance for resident and day girls in the gymnasium.

Excursion for the younger children.

Recital by the instructors in the Departments of Music and Elocution.

January.—Christmas Carol Service.

Party given by "New Girls" to "Old Girls."

Address by Dr. Ellen Pendleton, president of Wellesley College.

Address by Mrs. Henry Talbot on "The Woman's Auxiliary."

February.—Pupils' Recital, Music Department.

March.—First basketball match.

Second basketball match.

April.—Easter Carol Service.

Exhibition of gymnasium work.

May.—Sale of the "Society of the Royal Banner."

May.—Play, "King Rene's Daughter," with music, given by the Departments of Elocution and Music.

French plays and German recitations.

Alumnæ reunion.

Class excursions.

June.—Cantata, "Meadowsweet," given by the Elementary Department.

Baccalaureate sermon by Rev. A. A. Morrison, Ph. D.

Graduation concert by Miss Anna Barker.

Commencement concert by the Music Department.

Commencement Evensong and presentation of diplomas by the Bishop of Oregon.

Commencement dance.

Societies

The Society of the Royal Banner—Founded St. Andrews Day, 1904, for the extension of the Kingdom of Christ in Oregon. Under the direction of the Sister Superior. Monthly meetings.

Secret Societies are not allowed in St. Helen's Hall.

The School Paper is the *St. Helen's Hall Quarterly*. It is edited by the Senior Class, assisted by the Instructors in English.

School Honours

First Testimonials will be awarded at the end of each school year to pupils attaining an average mark of 90 per cent in every study, 95 per cent in Order, Punctuality and Attendance, 99 per cent in Conduct.

Second Testimonials will be awarded to those attaining 75 per cent in every study, 90 per cent in Order, Punctuality and Attendance, 95 per cent in Conduct.

The St. Helen's Hall Cross is the highest honor in the Resident Department. It is given to any resident pupil who throughout the year is punctual, orderly, courteous and gentle in her daily conduct, and loyal to the school. It was given in 1913 to

Bernice McGregor	Marian Van Horn
Lenore McGregor	Dorothy Condon
Gladys Holland	

Testimonials 1912-1913

FIRST.

Margaret Platt	Amy Robinson	Stella Swirsky
----------------	--------------	----------------

SECOND.

Eldora Hall	Dorothy Condon	Nina Kline
Alice Dabney	Beatrice Thurston	Nadine Caswell
Myla Chambers	Ethel Waite	Adeline Kendall
Martha Hoyt	Evelina Magruder	Nellie Reidt
Linzee King	Modesta Mortensen	Ethel Malpas
Margaret Welch	Eloise Watson	Mary Muir

Daily Schedule

Rising Bell,	- - - - -	6:30 A. M.
Breakfast,	- - - - -	7:15 A. M.
Out-Door Exercise,	- - - - -	8:05 to 8:35 A. M.
Assemble in School Rooms,	- - - - -	8:40 A. M.
Chapel,	- - - - -	8:45 A. M.
Study and Recitation,	- - 9:00 A. M. to	1:15 P. M.
Luncheon,	- - - - -	1:15 P. M.
Study and Recitation	- - - 2:00 to	2:45 P. M.
Recreation and Exercise,	- - - 2:45 to	4:00 P. M.
Dress for Dinner,	- - - - -	4:00 P. M.
Study Hour,	- - - - -	4:45 P. M.
Chapel,	- - - - -	5:45 P. M.
Dinner,	- - - - -	6:00 P. M.
Recreation,	- - - - -	7:00 to 7:30 P. M.
Study Hour,	- - - - -	7:30 to 9:00 P. M.
Lights Out,	- - - - -	9:30 P. M.
Gymnasium Work,	- - - - -	2:00 to 4:00 P. M.
Studio Open Tuesday and Thursday,	- - - - -	2:00 to 4:00 P. M.

Attendance at the gymnasium is required one afternoon in each week.

Day pupils who have finished their recitations are dismissed at 1:15 P. M. if desired.

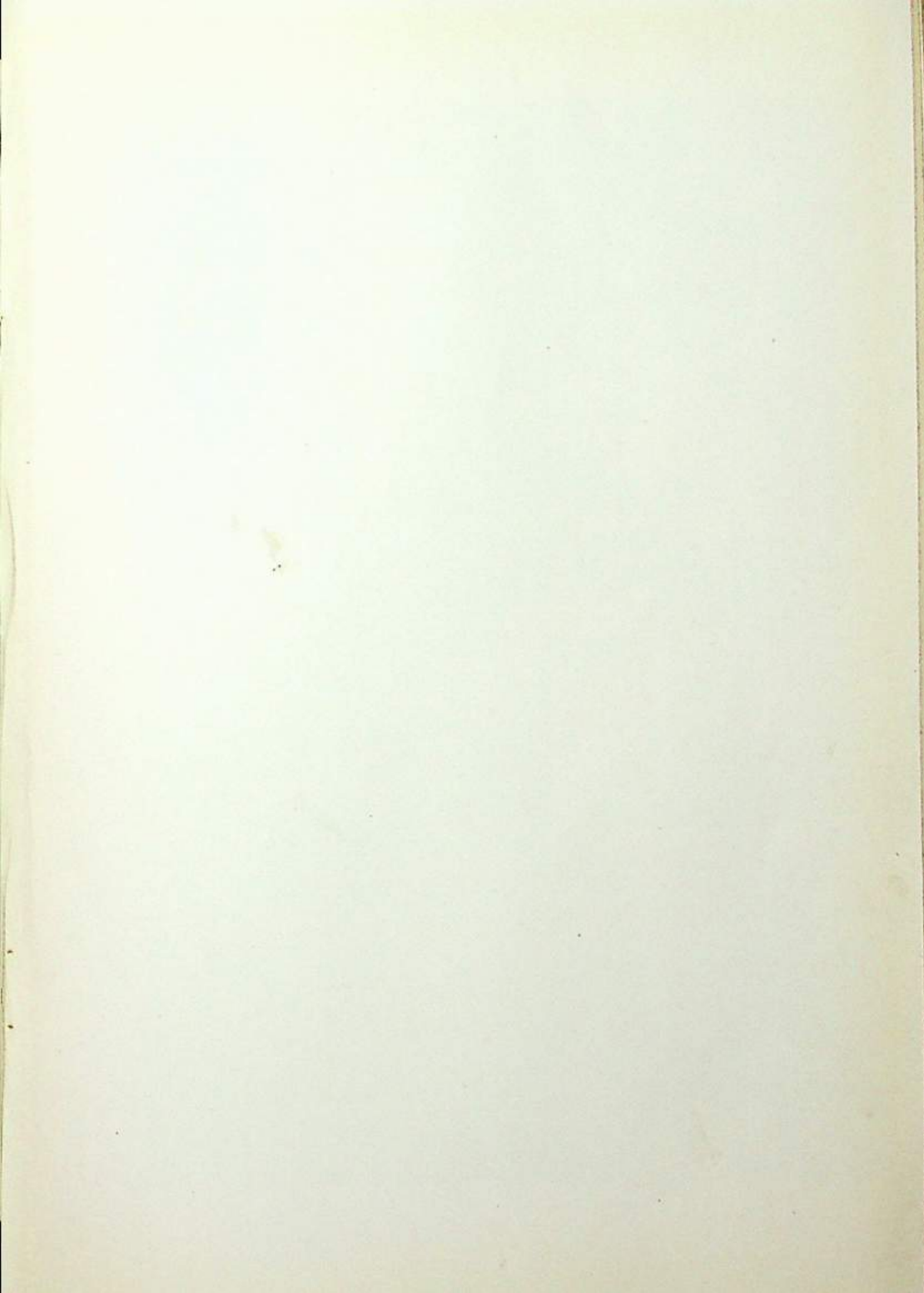
Expenses

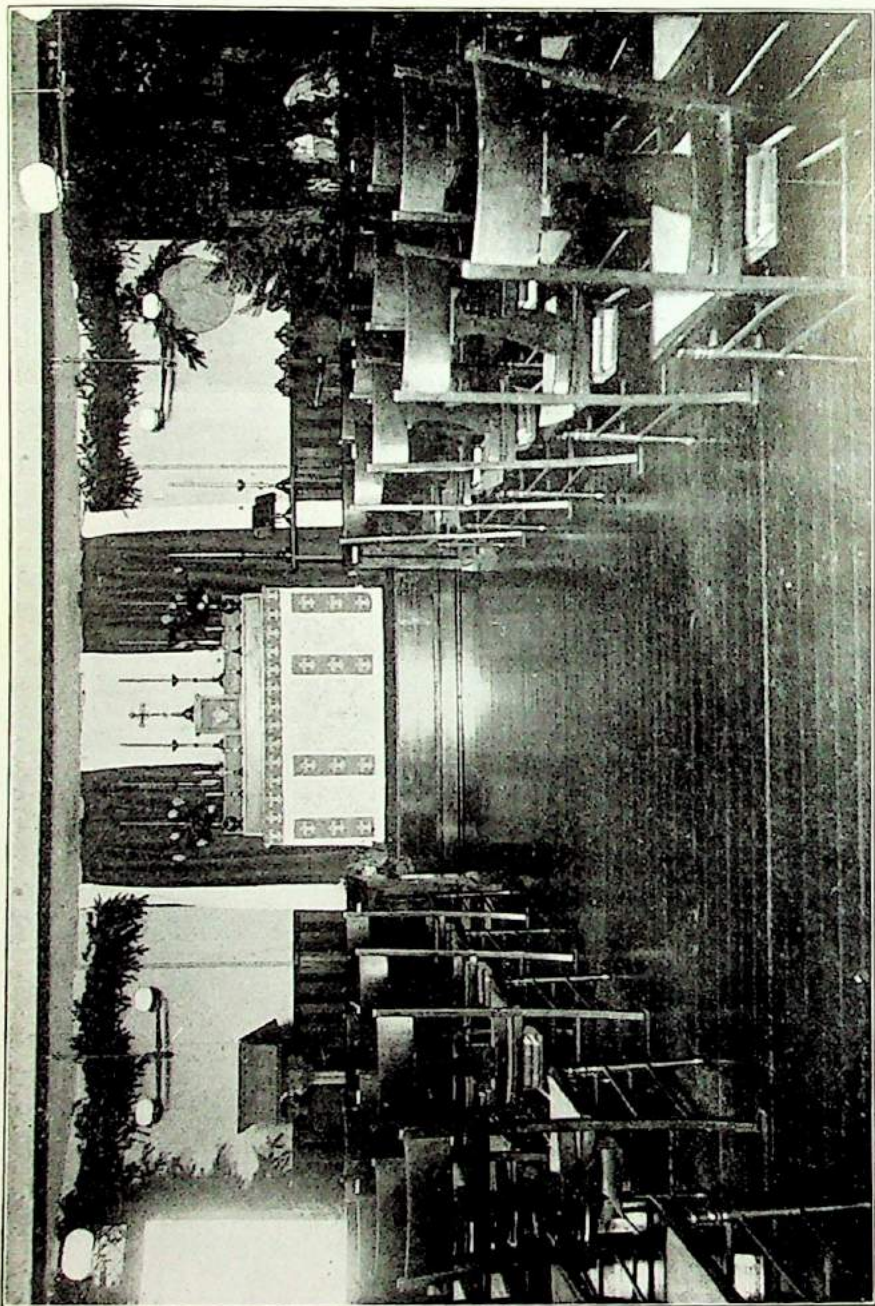
Board, Tuition and Laundry (18 pieces weekly), per year.	\$500.00
Payable with application (advance deposit).....	25.00
Payable September 1	250.00
Payable February 1	250.00
Day Tuition, payable in advance, Sept. 14th and Feb. 1.	
Montessori Room, terms per year.....	60.00
Elementary Department 1st, 2d and 3d year.....	60.00
" " 4th and 5th years.....	70.00
" " 6th and 7th years.....	80.00
Academic Department, 1st year	100.00
" " 2d, 3d and 4th years.....	120.00
Collegiate Department, per year.....	120.00

Extra Expenses

MUSIC—PIANO—Two lessons a week, including, for resident pupils, the use of the piano for two practice periods daily. Per year.....	80.00
VOCAL MUSIC, including, for resident pupils, use of piano for two practice periods daily. Per year.....	80.00
PIANO OR VOCAL lessons for day pupils, two lessons a week, not including practice. Per year.....	70.00
VIOLIN—At teachers' rates.	
ART—Charcoal, Pen and Ink, Oil or Water Colours, two lessons per week. Per year.....	40.00
ART—Full course, daily lessons. Per year.....	100.00
ELOCUTION—Two private lessons a week to pupils of St. Helen's Hall. Per year.....	60.00
DANCING—Term of ten lessons in class.....	5.00
SPANISH AND ITALIAN— At teachers' rates.	
LABORATORY FEE	3.00
Seat in Church, year.....	5.00
Tutoring, per hour	1.00
Hot Luncheon, day pupils, per week.....	1.00
Graduation Fee (including life membership in the Alumnae Association)	15.00
Library dues	1.00
All bills must be paid before graduation.	

No extra charge is made for Latin, Greek, French or German, for Class Singing, and Physical Culture.





CHAPEL

The advance deposit is required to secure a room before the school opens and is used to meet the expenses of books, music and other school supplies. An account of the same will be rendered at the close of the school year, and any surplus returned.

The laundry work included in the regular charge does not include white skirts or dresses. Coloured undershirts should be provided and dresses or waists of wash material are not allowed to be worn from November 1 to April 1.

All arrangements are made for the entire school year. Pupils withdrawn before the end of the year will be charged in full except in cases of severe illness, when the loss will be equally shared. This is a distinct condition of the contract. The cause of removal must be attested by two physicians, one of whom shall be the attending physician of the school. No deduction is made for occasional absence, nor for absence during the first four weeks. It is assumed that these conditions are accepted when the pupil is entered, this being the custom of all schools in good standing.

No reduction will be made for absence of less than six weeks.

A reduction of ten per cent on board and ordinary tuition is allowed for two sisters. Bills for board and tuition for the second term must be settled before May 1, at the latest, and all incidental accounts must be settled before June 1. When desired pupils may remain at the school during Christmas and Easter vacations and for that time will be charged at the rate of six dollars a week.

Pupils whose homes are not in Portland are required to be resident pupils at the Hall.

List of Pupils

1913-1914

COLLEGIATE DEPARTMENT.

Doris Smith	Portland	
Constance Taylor	Portland	— 2

ACADEMIC DEPARTMENT.

SENIOR CLASS.

✓ Adele Bray	Helena, Montana	
Dorothy Durham.....	Spokane, Washington	
✓ Evelyn Farrar.....	Sacramento, California	
✓ Esther Gilpin	Portland	
Helena Johnson.....	Winlock, Washington	
✓ Helen Kelly.....	Victoria, B. C.	
✓ Beatrice Stone.....	Hood River, Oregon	
✓ Susan Truby	Portland	
✓ Elsie Walker	Portland	
✓ Adele York.....	Vancouver, B. C.	— 10

IV.

Lewina Ainsworth.....	Thompson Falls, Montana
Lois Blackford.....	Scappoose, Oregon
Ina Boatman.....	Spokane, Washington
Dorothy Condon.....	Port Gamble, Washington
Myla Chambers	Portland
Alice Dabney	Portland

Martha Hoyt	Portland	
Helen Jeffers	Portland	
Alma Houser	Grainfield, Kansas	
Norine Pike	Portland	
Miriam Todd	Portland	
Ethel Waite	Sutherlin, Oregon	
Margaret Welch	Portland	— 13

III.

Gertrude Carver	Everett, Washington	
Vera Garratt	Seattle, Washington	
Evelina Magruder	Portland	
Ivy Morbach	Portland	
Margaret Orrett	Tacoma	
Margaret Platt	Portland	
Amy Robinson	Portland	
Carolyn Tilley	Portland	
Mabel Tilley	Portland	
Beatrice Thurston	Wells, Oregon	— 10

II.

Marguerite Bergh	Portland	
Lucile Bingham	Portland	
Frances Brown	Baker, Oregon	
Nadine Caswell	Portland	
Dorothy Cannon	Portland	
Susan Greene	Aberdeen, Washington	
Winifred Howell	Seattle	
Adeline Kendall	Portland	
Nina Kline	Hood River, Oregon	
Lilian MacDonald	La Grande, Oregon	

Ethel Malpas	Portland
Consuelo MacMillan	Portland
Mary Muir	Portland
Edna Nelson	New Westminster, B. C.
Ellen Reidt	Portland
Stella Swirsky	Portland
Gertrude Vance	Astoria, Oregon
Lilian Williams	Seattle, Washington
Mary Wilson	Oswego, Oregon
Dorine Wyld	Portland
Jeanette Young	Portland — 21

I.

Mary Appleby	Portland
Katharine Baum	Portland
Charlotte Breyman	Portland
Adella Breiter	Portland
Lucile Brown	Portland
Alda Carlson	Portland
Carolyn Cannon	Portland
Inez Chambers	Portland
Esther Coats	Seattle, Washington
Eleanor Cram	Gateway, Oregon
Cordelia Davis	Juneau, Alaska
Lucile Doerr	Spokane, Washington
Katharine Elmer	Portland
Helen Fargher	Portland
Dorothy Grove	Portland
Hazel Haines	Burns, Oregon
Ruth Hopkins	Aberdeen, Washington
Agnes Inks	Portland
Brenda Jenkins	Seattle, Washington

ST. HELEN'S HALL

37

Thelma Jenkins	Seattle, Washington	
Lee Kelly	Victoria, B. C.	
Marie King	Medford, Oregon	
Elizabeth Kirby	Portland	
Mary Morrison	Portland	
Amy Pernot	Portland	
Miriam Reed	Portland	
Joan Rosendale	Portland	
Harriet Wight	Portland	
Katherine Wheeler	Portland	— 29

SPECIAL STUDENTS.

Jane Auterson, Music.....	Portland	
Anna Barker, Music.....	Portland	
Anna Boynton, Music and Languages....	Portland	
Maude Carlisle, Music.....	Hood River, Ore.	
Katherine Deuel, French and History.	Medford, Ore.	
Audrey Dielschneider, Music....	McMinnville, Ore.	
Pearl Ditto, Music	Portland	
Alice Gadsby, Music and English.....	Portland	
Lorena Luckey, Music.....	Portland	
Ellen Newbegin, French.....	Portland	
Katharine Newbegin, French.....	Portland	
Mildred Lake, Music.....	Portland	
Charlotte Patterson, Music and Elocution..	Portland	
Margaret Stevens, Music and Latin.....	Portland	
Ida Williams, English and Music..	Cranbrook, B. C.	
Florence Wendt, Music.....	Portland	— 16
Total Collegiate and Academic.....		101

ELEMENTARY DEPARTMENT.

VII.

Marjorie Campbell	Portland	
Ruth Ferguson	Portland	
Lucile Hutton	Portland	
Marie Jackson	Portland	
Dorothy Leadbetter	Portland	
Mary Helen Spalding	Portland	
Anna Wheeler	Portland	— 7

V.

Hilda Baum	Portland	
Frances Baker	Portland	
Edwina Goudey	Portland	
Mignon Herod	Zillah, Washington	
Helen Ross	Portland	
Eleanor Simpson	Portland	
Georgia Wilsey	Portland	— 7

IV.

Beulah Belcher	Portland	
Harriet Breyman	Portland	
Suzanne Caswell	Portland	
Marian Scott	Portland	
Jessie Smith	Portland	
Lucile Traglio	Portland	
Lucile Vogt	Portland	— 7

III.

Margaret Boyer	Portland	
Laura Breske	Portland	
Florence Cavanagh	Portland	
Inez Downing	Portland	
Helen Ernst	Portland	
Constance Gilpin	Portland	
Frances Gue	Portland	
Edith Hencye	Portland	
Helen Holmes	Portland	
Elizabeth Leadbetter	Portland	
Elsie Perry	Portland	
Virginia Richards	Portland	
Frances Spalding	Portland	
Katharine Young	Portland	
Mabel Tilly	Portland	— 15

II.

Caroline Everding	Portland	
Jean Muir	Portland	
Gladys Gardner	Portland	— 3

I.

Julia Abraham	Portland	
Pauline Hamilton	Portland	
Mayanna Sargent	Portland	
Evelyn Wade	Portland	— 4

SPECIAL.

Letitia Owens, Music	Portland	— 1
Total Elementary		44
Total Enrollment		145

Needs of St. Helen's Hall

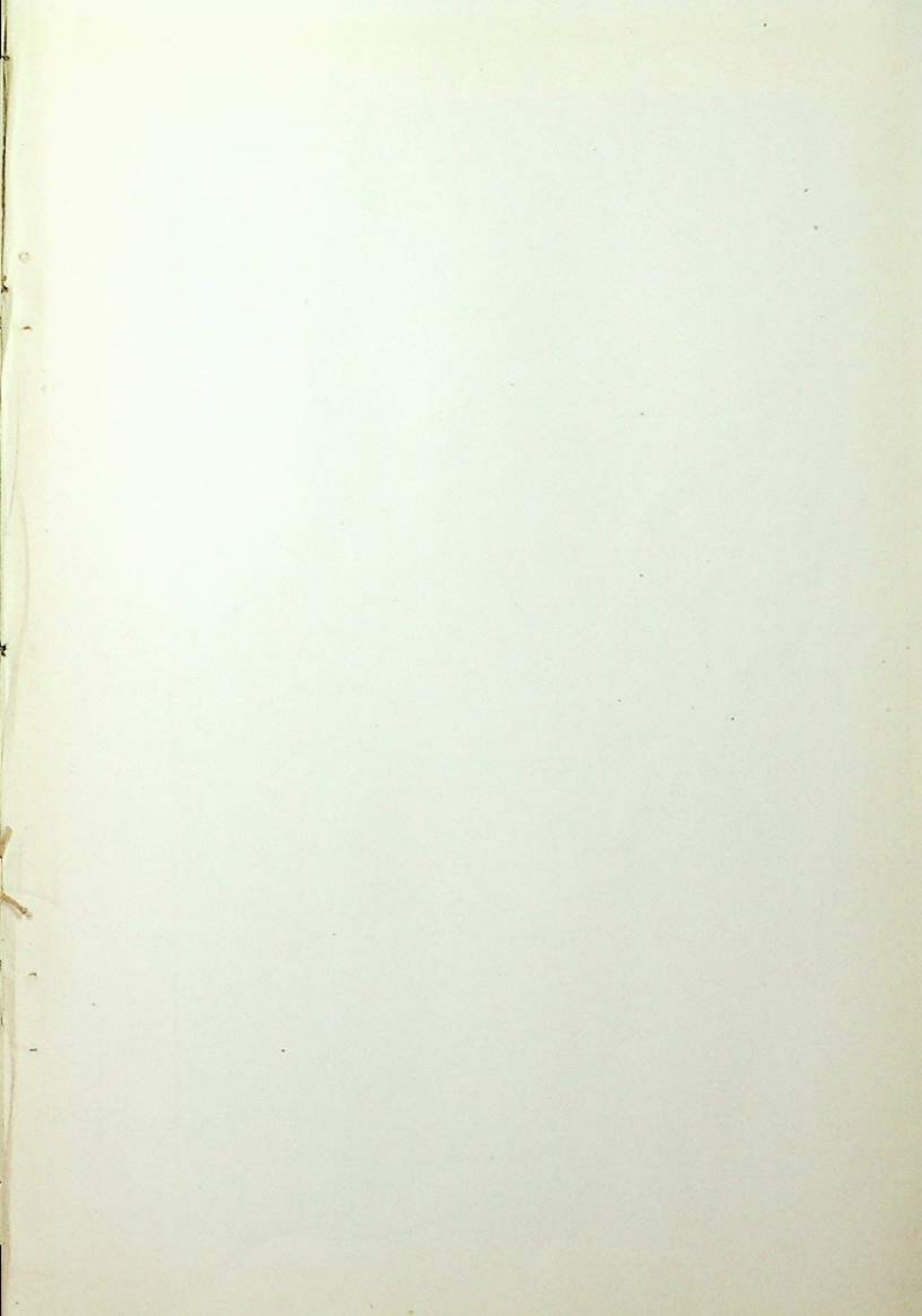


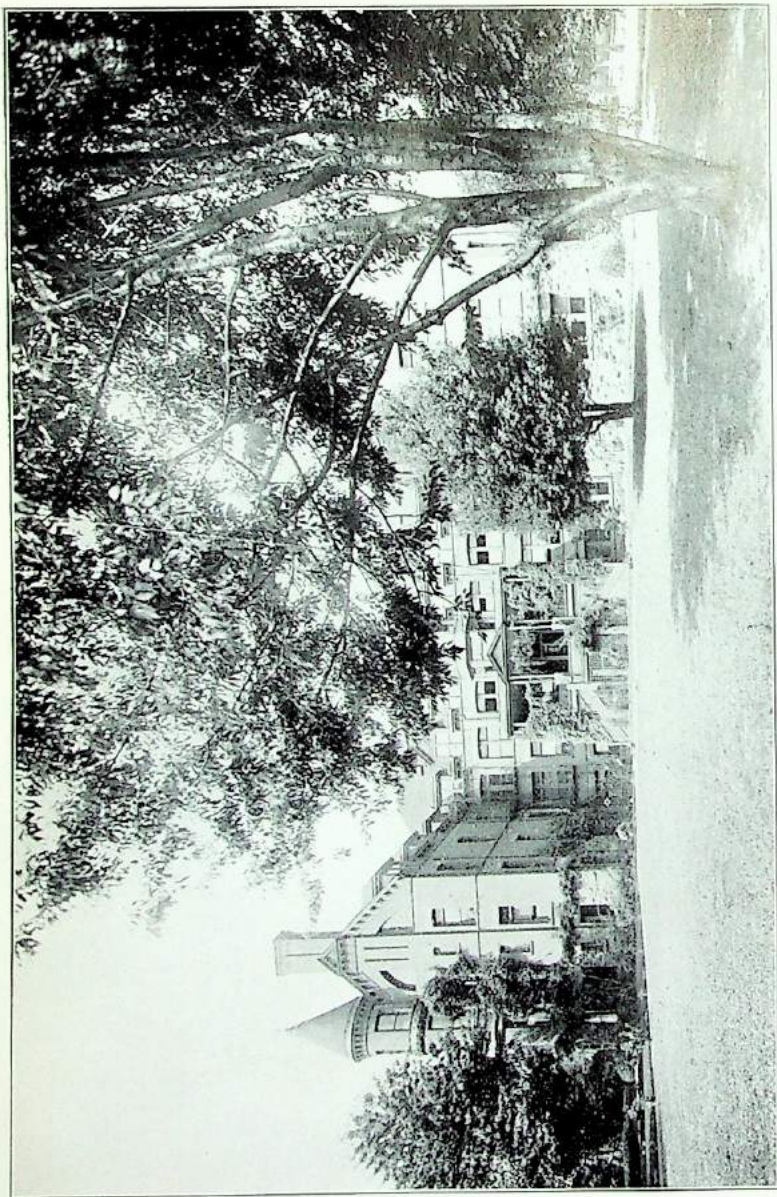
A Permanent Endowment Fund.

The Society of Graduates desires to raise an endowment fund of \$100,000. Subscriptions may be sent to the treasurer, Mrs. Horace Ramsey, 343 Thirteenth street, Portland, Oregon.

A Building Fund. A larger site and new buildings will soon be a necessity. The new chapel will be a memorial to Mary B. Rodney, first Principal. For this there is a fund of three thousand dollars, fifteen thousand will be required for the chapel, and gifts toward other buildings will be greatly appreciated.

Increased Scholarship Funds. There are scholarship funds to the amount of \$15,000, but more could be used to the advantage of deserving girls.





ST. HELEN'S HALL, EAST FRONT

Forms of Bequest

I give and bequeath to The Board of Trustees of St. Helen's Hall, a corporation organized under and by virtue of the laws of the State of Oregon, the sum of.....Dollars to be invested and called the.....Endowment Fund. The interest of such investment shall be applied to the payment of salaries of teachers of St. Helen's Hall, or such other operating expenses as the Board of Trustees may deem expedient.



I give and bequeath to the Board of Trustees of St. Helen's Hall, a corporation organized and existing under and by virtue of the laws of the State of Oregon, the sum of.....Dollars, to be invested and called the..... Building Fund, the accrued interest thereon to be likewise invested from time to time and principal and accrued interest to be expended at the discretion of the Board of Trustees in the erection of new buildings or the addition to present buildings of St. Helen's Hall.



I give and bequeath to the Board of Trustees of St. Helen's Hall, a corporation organized under and by virtue of the laws of the State of Oregon, the sum of.....Dollars for the endowment of a scholarship to be known as theScholarship. The principal of the bequest to be safely invested by the Board of Trustees and the income applied to the assistance of deserving students at St. Helen's Hall.

List of Graduates

1872.

SALLY C. CAMPBELL,
MARY H. COUCH,

MARGARET R. GEARHARDT,
ALICE M. HENDERSON,
MARY TAYLOR.

1873.

"The end of learning is to know God."

LAURA P. ADAIR,

IOLA M. BRISTOW,
HORTENSE C. VAN FRIDAGH.

1874.

"Look up."

ANNA H. BRECK,
KATE S. HOLMAN,
SOPHIA HOLMAN,

MARY L. KELLY,
ALLETTA T. LINDSLEY,
MARY R. MORRIS,
MARY C. WILSON.

1875.

HELEN G. BRECK,
VALICIA BROWN,

ELVIRA L. CRELLIN,
ANNIE G. DELINN,
ALICE S. HIGGINS.

1876.

"Festina Lente."

CARRIE CAPLES,
JENNIE CAPLES,

CLARA A. HUMASON,
MARY EMMA LEWIS,
MARY E. STONE.

1877.

"Be what you are."

LUELLA C. CARSON,
HENRIETTA E. FAILING,

NELLY SEELYE,
KATE S. STOREY,
NELLY A. WYGANT.

1878.

"Semper Sursum."

L. ELLEN A. STEPHENS, ELLA L. WOODS.

1879.

ELLEN STRONG, CAROLINE STRONG.

1880.

*"High be our thoughts."*FRANCES P. BURNSIDE, LIZZIE W. MYRICK.
CLARA C. MUNSON.

1881.

*"Deserve the best."*MARIA F. CLOPTON, IDA K. MCKENNA,
MARGARET GREEN, CLARA E. NORTHRUP,
ELIZABETH IRVING, MARY A. SHINDLER,
SUSAN WHALLEY.

1882.

VIRGINIA H. WHITING.

1883.

"The readiness is all."

CHARLOTTE E. CRAWFORD.

1884.

"Follow, follow, thou shalt win."

ALICE M. CHANCE.

1885.

"Nulla palma sine pulvera."

EMILY C. FAILING.

ST. HELEN'S HALL

1886.

"For all eternity."

NELLIE L. CASE,
EUGENIA CUNNINGHAM,
ALICE B. CRAWFORD,

CORNELIA EATON,
JOCELYN FOULKES,
ORONOCO L. RANDALL.

1887.

"True to the kindred points of Heaven and home."

LAURA CAMPBELL,
HENRIETTA H. FAILING,
MARTHA A. HOYT,

JESSIE MURCH,
CLARA M. ROSENBERG,
DORA N. TAYLOR.

1888.

MABEL BECK.

1889.

"Spero."

ELLA HIRCH,

MAY GOLDSMITH.

1890.

"Non stando sed ambulando."

LUCRETIA ALLEN,
ELIZABETH M. CADWELL,
MARY J. CHARMAN,

ELIZABETH A. LAMBERT,
HENRIETTA SINSHEIMER,
JANE WHALLEY.

1891.

MABELLE C. DENT,
CAROLINE W. FLANDERS,

JULIA HAMILTON,
EMMA E. WINTLER.

1892.

"Hodie."

ALICE C. FAILING,
ELLA JORDAN,

HATTIE M. NEWMAN,
KATHRYN WINTLER.

1893.

"Nulla dies sine linea."

LOUISE F. KUEBLI,

CHARLOTTE WHALLEY.

ST. HELEN'S HALL

45

1894.

META ALLEN,
KULLA C. MCFADDEN,

ANNA B. SCOTT,
KATHLEEN SEELEY.

1895.

"Non sibi."

STELLA H. SPEDDEN,

MYRTLE L. SMITH.

1896.

"L'Esperance."

ALICE C. ANDREWS,
IDALIA J. BENSON,
EMMA L. BOOTH,
AMY J. BRATTON,

OCTAVIA DRAKE,
LENA A. EDDY,
EDNA HAIGHT,
L. ESTELLE KILLEN.

1897.

"Per angusta ad augusta."

KATHARINE F. FAILING,
F. BYLIEU LOUNSBURY,

DORCAS MERRILL,
IDA THOMPSON,
AILEEN WEBBER.

1898.

"Nulla vestigia retrorsum."

STELLA ALEXANDER,

MARION BAUER,
FRANCES JACOBS.

1899.

"Vincit qui se vincit."

ROSA JOSEPHSON,
RUTH LOVERIDGE,

CHARLOTTE OHLE,
LILLIAN WOLLENBURG,
NATALIE WOLLENBURG.

1900.

"Facta non verba."

HELEN RAMSDELL,

SALLY POWELL.

1901.

"Viam aut inveniam aut faciam."

THORA POULSEN,	FANNY SWARTZ,
HILDA HEXTER,	FRANCES LANE,
KATHARINE ARNOLD,	EULA McCULLY.

1902.

"Praeisis aut prosis."

MARION GRAY,	ETHELWYNNE HARRIS,
	MURIEL WEATHERDON.

1903.

"Probitas verus honos."

ELIZABETH STEWART.

1904.

"Esse quod esse videris."

SUSAN GENEVIEVE BELLUS,	ELIZABETH BLODGETT LORD,
KATE ESTHER RAMSDELL,	WILLETA LEETZER,
SARA JEAN WINANS,	MABEL ALICE NISSLER,
JOSEPHINE ESTHER SMITH,	MIRIAM VAN WATERS,
GLADYS ATKINS FARRAR,	MARCIA WADE,
RENA KUHN,	MARGARET SOPHIA WALTER.

1905.

"Surge illuminare."

BYRA ABBOTT,	DOROTHY LANGFITT,
EVA BAILEY,	MYRA LOVERIDGE,
CLARA BOOT,	ALICE McCORMAC,
HELEN COLDWELL,	CLARA MACEWAN,
ALICE COLLIER,	MARGARET MORRISON,
CATHERINE EMMONS,	CARRIE SHORT,
GERTRUDE GRAY,	MAUD VAN DUSEN,
JESSIE GRIMMETT,	WINIFRED VAN DUSEN.

ST. HELEN'S HALL

47

1906.

"Lux et Veritas."

ELIZABETH ARMSTRONG,
KATHLEEN ARMSTRONG,
ARLINE DAVIS,
JANET GRAY,

HELENA HUGHES,
ISABEL HUGHES,
GERTRUDE JONES,
GENEVIEVE SENGSTACKEN.

1907.

"Fortiter, Fideliter, Feliciter."

MARGUERITE CROSEY,
LOUISE EMMONS,
HAZEL FERRIS,
HILDA HAGEDORN,
JESSIE HALE,

MARY HEWITT,
HAZEL ROBB,
MERCEDES SIMS,
JUNE STERLING,
HAZEL TICHNER,
EVELYN WILSON.

1908.

"Posside Sapientiam."

MARGARET BOOT,
SHANNA CUMMING,
FLORA DAVIS,
LEONIDE FLEURY,
IONE LAMBERT,

GWENDOLYN LLWYD,
MAUDE MEENACH,
ALTA RING,
ETHEL C. TOWERS,
OLIVE WILSON.

1909.

"Labore et Honore."

ELIZABETH BLAIR,
VIEVE CECIL,
FRANCES CLAY,
MARGARET COLDWELL,
GRACE COLLIER,
CLAUDIA FLIEDNER,
DOROTHY GILBERT,

DAISY GREEN,
CLARABEL GRIM,
STELLA JONES,
EMMELINE POWELL,
LUCY POWELL,
ELLEN THIELSEN,
HELEN WHITE,
ROXANA WHITE.

1910.

"Lactus sorte mea."

MARGARET LESLIE EMMONS,	MARGUERITE ROHSE,
MARGARET W. HEWETT,	ANNA STREIFF,
CLEMENTINE LAMBERT,	MAY WALTHER,
JUANITA MATLOCK,	HELEN T. WATT,
HAZEL MORROW,	HELEN L. WHITNEY.

1911.

"Veritas Vincit."

MARY BLOSSOM,	DOROTHY HUBER,
LORA CUMMING,	FERN HUTCHINSON,
CASSIH HILLER,	WINIFRED LONDON,
	GENE SPENCER.

1912.

"Surgamus et aedificemus."

MANUELLA BRIGGS,	GERALDINE HORN,
ELIZABETH DARCH,	VERNA MENELEE,
ELVA GASKELL,	LORRAINE PERCIVAL,
RUTH HALL,	EOLA RICHARDS,
GENEVIEVE HAILEY,	LUCY SIMPSON,
MARIE HANSEN,	EDITH SLUSHER,
OLIVE HARRIS,	ALICE THURSTON,
EVELYN HITCHCOCK,	LUCRECE WOOD.

1913

"Ad Ultimum Summis"

JANE AUTERSON,	ELIZABETH JONES,
ANNA BARKER,	DORIS SMITH,
LORRAINE BEAN,	RUBY STEIWER,
RUTH CAMP,	RUTH STRYKER,
MARGUERITE EMERSON,	CONSTANCE TAYLOR,
ALICE FOX,	KATHERINE TOOKER,
KATHARINE GRAHAM,	MARIAN VAN HORN,
	JULIE WHITMER.

ST. HELEN'S HALL

49

1914

"Attingit quod petit."

ADELE BRAY,	BEATRICE STONE,
DOROTHY DURHAM,	SUSAN TRUBY,
EVELYN FARRAR,	ELSIE WALKER,
ESTHER GILPIN,	ADELE YORK,
	HELEN KELLY.

COLLEGIATE DEPARTMENT.

1909.

LOUISE CECIL,	ADELE DYOTT.
---------------	--------------

1910.

NELLIE LATHROP,	MYRTLE MARGARET SMITH.
-----------------	------------------------

1911.

MARY BEL HANCOCK,	CARRIE PAIGE,
HELEN HOLBROOK,	LUCY POWELL.

DEPARTMENT OF MUSIC.

1907.

MARY MAUD CARLISLE,	ADA WEST.
---------------------	-----------

1909.

GWENDOLYN LLWYD.

1911.

MARGARET COLDWELL.

1912.

DOROTHY VEDDER.	MANUELLA BRIGGS.
-----------------	------------------

1914.

ANNA BARKER.

ST. HELEN'S HALL

KINDERGARTEN TRAINING CLASS.

1902.

MINA NESBIT,

EDITH HABERSHAM,
RUTH GILMAN.

1903.

AUGUSTA HUMPHREYS,

MARY BOYS.

1904.

BESSIE M. DE BEVOISE,
LILLIAN V. JAMESON,E. MAY PENWILL,
HELEN M. STAFFORD.

1905.

GERTRUDE HUTCHINSON,

ETHEL WALTER.

1906.

ELSIE BACKUS,
KATHARINE GILBERT,
GERTRUDE GILL,ETHELWYNNE HARRIS,
SARA LEADBETTER,
RACHEL SMITH.

1907.

HELEN BOOTH,
HELEN COLDWELL,
BEULAH DUNCOMB,MARY MCINTOSH,
JOSEPHINE SCHELL,
PEARL SCHELL.

1908.

CLARA THOMPSON,

JESSIE TUPPER.

1909.

ETHEL BILLINGS,

REBECCA N. HATTON,
MYRTLE STOCK.

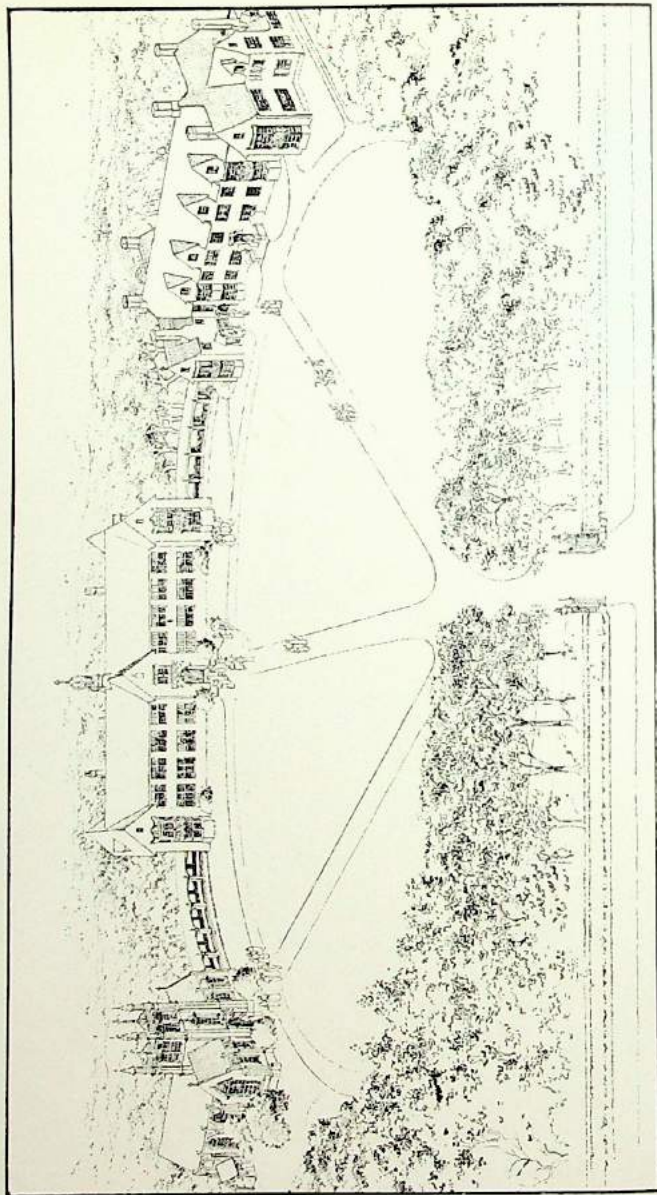
1910.

LEONIDE FLEURY,
JESSIE MACDONALD,CARROLL MCCOLLUM,
ERMINE OWEN.

1911.

HELEN GANNETT.





PROPOSED PLAN.