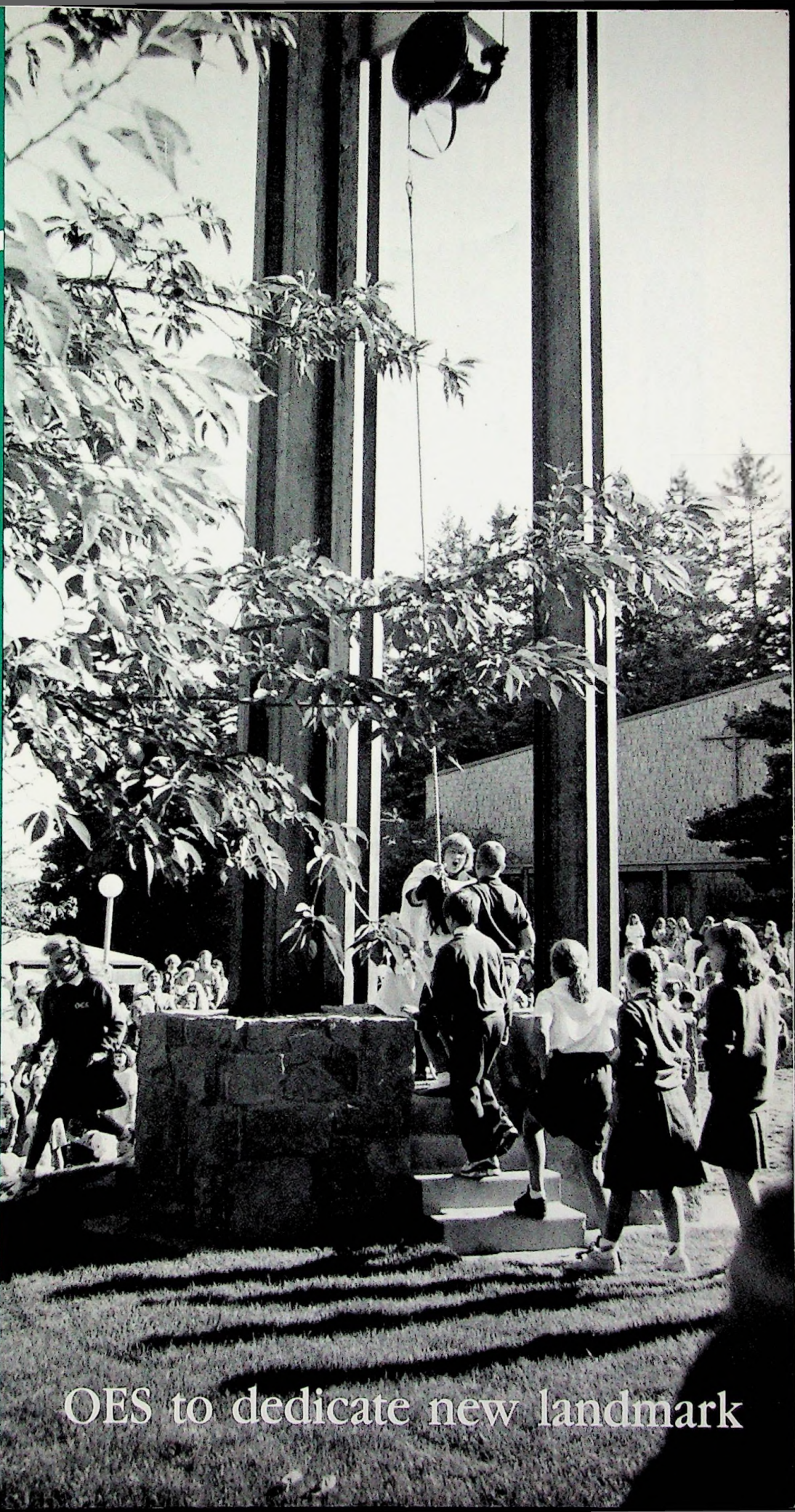


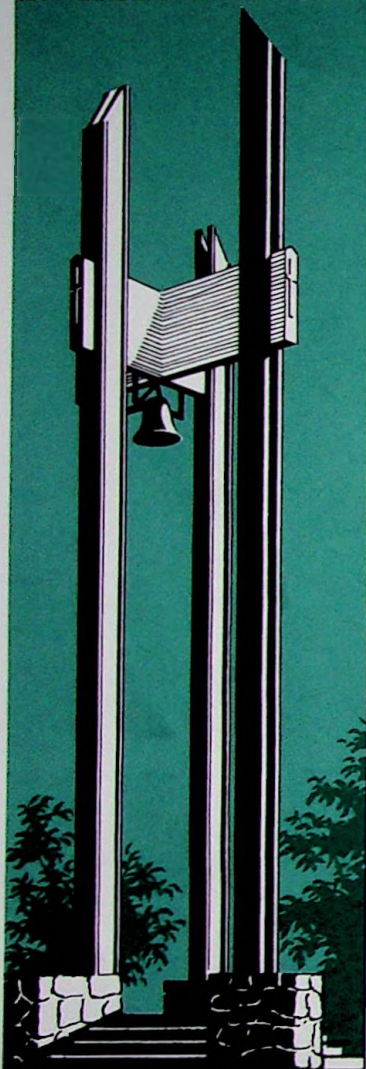
Autumn 1991 Volume 1, Number 1

# THE OES Belltower



OES to dedicate new landmark

**THE  
OES  
Belltower**



Founded in 1869, Oregon Episcopal School is located on a 59-acre campus in Portland's southwest hills. It is the only co-ed boarding school in the Pacific Northwest that holds membership in the National Association of Independent Schools and is one of the oldest Episcopal schools in the United States.

OES offers a demanding, college preparatory, liberal arts curriculum to students in pre-school through high school. Classes are small and the pace is challenging. Call (503) 246-7771 for more information.

Photos: Cynthia Smith '90, Tom Oxholm, Anne Scraggin, Rick Rappaport and Chris Anderson.

Logo: Barbara Byrnes Norris

Classmates: Anne Scraggin and Kathy Kacifotas  
Editor: Marlann Koop  
Assistant Editor: Jody L. McNannay  
Printed by: Beaverton Printing, Inc.

The Belltower is published by OREGON EPISCOPAL SCHOOL, 6300 SW Nicol Road, Portland, OR 97223.

In the tower together with OES 5th grade students, Lower School Chaplain Lou Ann Pickering celebrates the opening of the 1991 School Year by ringing the bell, now ringing in our new Belltower, once for each year since our founding.

**CALENDAR**

Thursday	<b>October 3</b>	Science Technology and Society <i>Guest Lecturer: Dr. John Barrow</i> Soccer Playoffs
Friday	<b>October 25</b>	Science Technology and Society <i>Guest Lecturer: Dr. Henry Petroski</i> Soccer Playoffs continue
Thursday	<b>October 31</b>	Volleyball Playoffs
Saturday	<b>November 2</b>	
Thurs-Sat	<b>November 21-23</b>	8:00 pm Fall play, "Tell Me that You Love Me, Junie Moon"
Monday	<b>November 25</b>	Grandparents' and Special Friends' Day
Tuesday	<b>December 3</b>	Girls Varsity Basketball
Thursday	<b>December 5</b>	Science Technology and Society <i>Guest Lecturer: Dr. Paul Davies</i>
Thursday	<b>December 12</b>	7:00 pm Advent Service
Wednesday	<b>December 18</b>	5th Grade Christmas Program
Thursday	<b>December 19</b>	1:30 pm St. Nicholas Service
Tuesday	<b>January 7</b>	2:00 pm Young Alumni Day
Wednesday	<b>January 22</b>	7:00 pm Upper School Open House
Friday	<b>January 31</b>	7:00 pm Middle School Musical
Thursday	<b>February 13</b>	7:00 pm Lower School Open House
Thurs-Sat	<b>February 20-22</b>	8:00 pm All School Play
Wednesday	<b>February 26</b>	7:00 pm Middle School Open House
Thursday	<b>March 5</b>	Science Technology and Society <i>Guest Lecturer: Dr. Ilya Prigogine</i>
Thursday	<b>April 9</b>	Science Technology and Society <i>Guest Lecturer: Dr. John Polkinghorne</i>
Thursday	<b>April 30</b>	Science Technology and Society <i>Guest Lecturer: Dr. Lynn Margulis</i>

**Learning styles specialist to visit OES/Catlin**

Educational psychologist and learning specialist, Jane Healy, Ph.D., will give a joint OES/Catlin Gabel School presentation on "Raising Good Students in a Video Age" at 7:30 pm on November 6th at Cabell Center on the Catlin campus.

Author of "Endangered Minds: Why Our Children Don't Think" and "Your Child's Growing Mind," Dr. Healy says that growing brains are physically shaped by experience. She will offer advice on how to encourage higher-level thinking and how to use TV constructively.



**OES logo polarfleece jackets are now available**

Three different polarfleece outerwear jackets, designed by OES parent Kathy Bussman, owner of ZiggZag Sportswear, and manufactured locally, are now available in sizes ranging from a child's size 4 to adult XL.



Options include the beautiful green and blue zip pullover, the red and navy zip cardigan - designed to "coordinate" with the OES uniform and the royal "lapis" blue zip cardigan. All jackets have the embroidered OES insignia on the upper left breast.

Common Link volunteers are coordinating the sales and distribution. Postage and handling are included in the price. Orders will be filled in two to four weeks. See Mary Wright, the OES receptionist, if you would like to place an order.



After exploring downtown Portland, OES student Angela Bevill (pictured second from left) shares a pizza with new friends from Shukutoku Elementary school in Tokyo Japan.

**TABLE OF CONTENTS**

**A new belltower . . . . . 4**

**OES builds a playground . . . . . 8**

**Hamilton Gregg on the OES Boarding Program . . . . . 10**

**THE MUSTARD SEED The OES Annual Report of Giving . . . . . Insert**

**Graduation 1991 . . . 11-12**

**Alumnae/i news . . . 13-15**

**Classnotes . . . . . 16-19**

## Dear Friends,

I am excited to introduce this first issue of "The BellTower," our new school magazine. Just as the tall and compelling new structure in the circle on campus has become a focal point for School gatherings and activities, so will this publication bring together news and information, ideas and debate for parents, alumnae/i and friends of Oregon Episcopal School. Both will serve us well, I feel, as we make our way with renewed confidence and clear vision into the early years of the next millennium.

You may read about the history of the Bell Tower in this issue, and about Blair Rosenlund '75, whose memorial plaque is now mounted on the rock in the gardens surrounding the new Tower. And you may read about this new structure as well, its design by Blair's classmate Alexandra Zimmer, and its donation by Cecil and Sally Drinkward, who have generously served this wonderful School for



years as parents, grandparents and trustees. Cecil was a member of the Board of Trustees from 1983 to 1990 and President from 1986 to 1988.

And you may read about the bell itself, a symbol that has been with the School for years, and that we honor now for the role it plays in unifying the past and the present, as it rings in the future. Our 5th graders rang the bell on opening day, one clear peal for each year of our history. This tradition began at St. Helens Hall in the perhaps simpler pioneering days of the nineteenth century and continues at Oregon Episcopal School in the madly complex 1990s.

This inaugural issue also presents "The Mustard Seed," our Annual Report of Giving for 1990-91. I hope

you catch the spirit of support for OES, as I have during my first year as Headmaster.

What will my second year bring? Well, record enrollment for one. We have opened this fall with 672 students, including an Upper School of 195. We have purposely maintained our attractive teacher: student ratio, our small classes and the close personal attention that parents and students seek here.

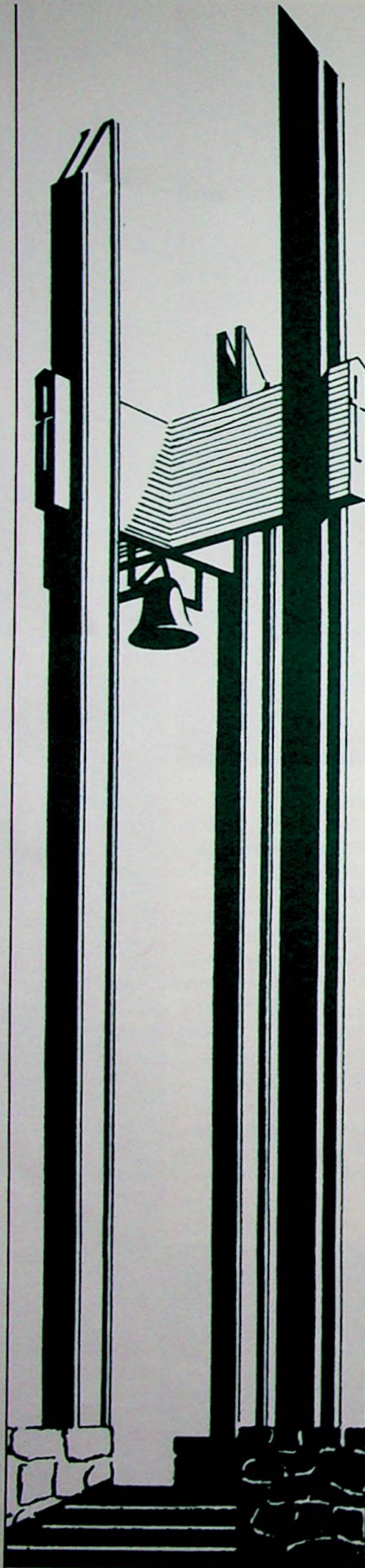
***"...you may read about the bell itself, a symbol that has been with the School for years, and that we honor now for the role it plays in unifying the past and the present, as it rings in the future."***

The year will also bring continued long-range planning. OES/21, or OES for the 21st Century, is in full swing, with some 20 committees and task forces focussing on issues that the policy committees identified last year. Reports and recommendations are due in the spring of 1992, when we will mold and present the Plan that will guide us into the next century.

And the year will bring our continued dedication to young people and their growth and development: that's what Bishop Morris's bell has been ringing for all these years, and that's what it continues to remind us of today.

Sincerely,

Peter W. Stevens  
Headmaster



## The New OES Bell Tower becomes campus focal point —

*"It's so tall. It soars."*

*"It really shows off the bell.  
Sounds different too."*

*"It's supposed to rust, isn't it -  
that's core-10, I think, a self-  
sealing metal?"*

*"Look, there are 3 sets of  
stairs."*

*"Oh, it's beautiful . . ."*

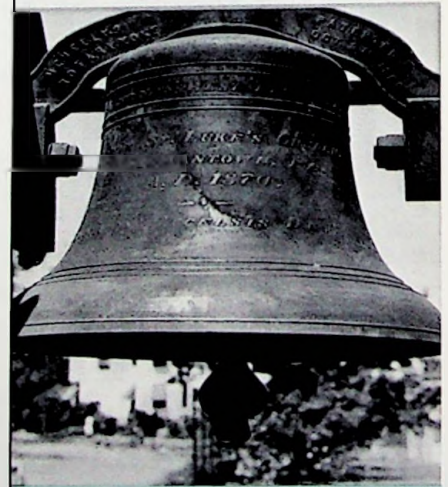
Funded by a gift from former Trustee and parent Cecil Drinkward and his wife, Sally Drinkward, the new OES Bell Tower does indeed soar. Up from the center of the Bell Tower Circle, 3 pillars of core-10 steel rise from a stone rubble base to embrace a cross of Alaskan Yellow Cedar, which supports the bell. The three pillars, three-sided base and three staircases were designed to symbolize the Trinity.

The new tower was designed by Alumna Alexandra ("Allie") Zimmer '76 to coordinate with the School's existing architecture. Allie, who attended OES for 14 years, graduated from the University of Oregon in 1984 with a B.A. in interior architecture. She has experience in all stages of residential and commercial design, from schematic development to construction documents. Allie has worked for Charles Lester Associates, Russ Watson Associates, Henry Taylor Architects and The Design Partnership, all of San Francisco, California. She recently relocated to Portland.

Cast in 1870, the bell was given to one of the School's founders, Bishop Benjamin Wistar Morris, as a gift from his former parish in Philadelphia. The bell, which was

brought by sailing ship around Cape Horn in 1870-71, has moved with the location from one location to the next. The first free-standing Bell Tower was constructed in 1969-70 - on the School's 100th Anniversary - at the Raleigh Hills campus. Over the years, traditions grew around the symbolic ringing of the bell. In the early 1960s, Seniors rang the bell at the end of the year — one toll for each year of the School's existence. Today, fifth graders perform that rite at Opening Day ceremonies.

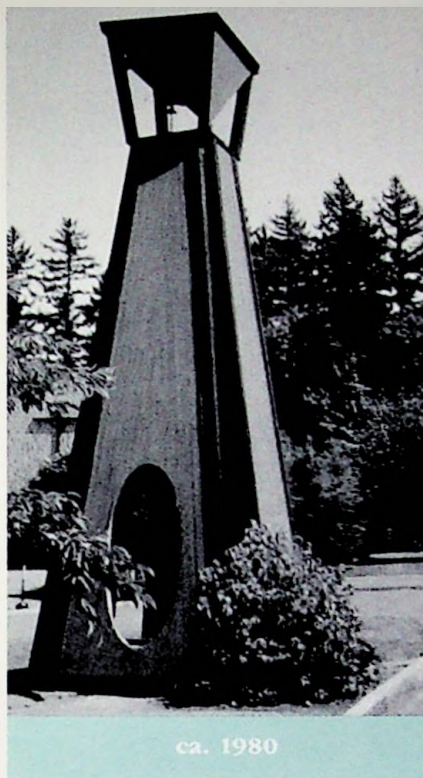
A dedication ceremony for the new OES Bell Tower honoring the Drinkwards, as well as the dedication of the Blair Rosenlund Memorial, is planned for November 1 at 1:50 pm.



THE ST. HELEN'S HALL BELL

Cast in 1870 - this bell was a gift from the church parish of Bishop Benjamin W. Morris in Germantown, Philadelphia. While on their voyage around Cape Horn in 1869, Bishop Morris and family, including Miss Mary Rodney, a sister-in-law, imported about their dream of a church school for girls in Portland. Miss Mary Rodney, a graduate and former teacher at St. Mary's Hall, a church school for girls in Burlington, New Jersey, became the first Headmistress of St. Helen's Hall. Miss Rodney remained Headmistress until her death in 1896. This bell journeyed around Cape Horn, and has hung in the three locations of St. Helen's Hall over these nearly 100 years.

ca. 1970



ca. 1980

## Blair Rosenlund remembered

When Blair Rosenlund '75 was killed in an auto accident on April 9, 1976, it seemed fitting that her friends remember her in a special way.

In November of that year, the OES Bell Tower had blown down in gale force winds, damaging the yoke and destroying the tower. The bell survived intact. Janelle Jarman '76 and the students in Joe Snyder's wood crafts class designed and built a new tower that was dedicated on March 5, culminating a week of Bicentennial celebrations.

Blair's friends and family dedicated their efforts to her, and a memorial plaque was mounted on the wooden tower.

When the wooden structure became old and unsafe, it seemed equally fitting that a member of the Class of '76 - Alexandra "Allie" Zimmer - design the new one. Blair's memorial plaque moved to a rock in the Bell Tower Circle - still at the center of campus life where students come and stay a while and go. Blair would have liked that, say her friends and family.

### The St. Helen's Bell

The famous old bell of St. Helen's hall, which was moved Monday to make way for workmen starting construction on a \$70,000 wing to the school building, was not perturbed, one may feel certain, by being lowered and hauled around. It is used to that by now. Several times since its arrival in 1870, as a gift from Bishop B Wistar Morris' former congregation in Germantown, Pennsylvania, it has suffered removal. It knows by now that it will ring out again over a larger and better school.

There have been many changes but no retrogression in the history of St. Helen's hall. When Bishop Morris came to Oregon in 1868 as successor to Bishop Scott in this Episcopal diocese, it was with his plans for the hall already laid. Even to the name. It was to be named for the mother of Constantine the Great, one of history's most famous Christian converts. And that designation was particularly fitting for a school from the windows of which the mountain St. Helens could be seen.

The beginnings of the hall were timely. Bishop Scott had managed a school at Milwaukie during the early and middle 1860s (Spencer hall), but it was too far from Portland and had been discontinued in 1866. Meanwhile the educational situation in Portland was badly disorganized, with the idea of free public schools just getting started. Bishop Morris opened St. Helen's quickly after his arrival, and from that day to this it has filled a vital need in the community. At first its appeal was popular. Then as the free public schools developed, particularly the high schools, St. Helen's took on more the character of the latter-day private school, justifying itself by its high standards and careful supervision of student work. Within the past few years it has added a junior college to the other grades from kindergarten up. It has a distinguished list of graduates and a high position on the accredited list of preparatory schools.

The hall had its early development on the block now occupied by the city hall. A new school was completed on Vista avenue in 1891. On September 3, 1914, the hall was half ruined by fire, and makeshift quarters had to be resorted to. In 1918, a three-year lease was taken on the old Portland academy at Thirteenth and Montgomery, and in 1921 this building was purchased outright. And all the time the old bell was kept tolling, wherever it was hung.



PORTLAND-Molly Clair ringing bell which for 70 years has called young women, including her great-grandmother, grandmother, mother and aunt, to classes at St. Helens hall.

ca. 1940



RINGING AGAIN — The 106-year-old bell at Oregon Episcopal School was installed Tuesday in its new 40-foot tower as students from the school watched. The bell, a gift to the school and Bishop Wistar Morris, the first Episcopal bishop of Washington and Oregon, was cast in Pennsylvania in 1870. It was toppled last year by strong winds. Students and resident woodcraftsman Joe Snyder, pulling ropes, built new tower.

1976



RINGING OUT THE OLD to make way for the new is Mary Ellen Smith of Oswego, vice-president of the student body of St. Helens hall, shown with the 400-pound bronze bell which was moved yesterday from the site of a projected school wing. Story on page 1.

1938

**THE SCHOOLS**  
**SCENE**

VALLEY TIMES, Beaverton, Ore., August 31, 1989 Page 7



ST. HELEN'S HALL bell, cast in 1870, will ring in 100th school year September 8.

**Bell rings 100 years at St. Helen's Hall**

The Centennial year of St. Helen's Hall for girls will begin on September 8 along with its coordinate school for boys, Bishop Dagwell Hall. Located in southwest Portland, the day and boarding schools expect a combined total enrollment of 515 from preschool through the 12th grade.

Eighteen adjacent acres have recently been added to the campus through the acquisition of the former Portland Hunt Club property. The club house has been remodeled and a residence for the St. Helen's Hall principal.

New appointments to the faculty and staff of St. Helen's Hall/Bishop Dagwell Hall include Miss Eleanor Foss, former principal of the upper school of Westlake School in Los Angeles, who will teach English and History; Mrs. Frances Jensen, preschool supervisor; and Mr. Stephen White, Episcopal seminarian who will spend a year's internship as assistant in the chapel and teacher of New Testament and English.

The Centennial celebration will be focused on two events. On September 12 at Portland City Hall, the original site of

St. Helen's Hall, a school flag will be raised in appropriate ceremonies. The weekend of November 15 and 16 will note the Centennial with a banquet at the Milam Hotel for alumnae and friends of the Hall with Dean Francis E. Sayre of the Washington National Cathedral as speaker and Gov. Tom McCall as master of ceremonies; and a service of Thanksgiving at Trinity Episcopal Church celebrated by the Rt. Rev. John E. Minas of New York, Presiding Bishop of the Episcopal Church.

The St. Helen's Hall bell, cast in 1870, was a gift to the Rev. Benjamin Wistar Morris from his parish in Germantown, Pa., shortly after he was elected second Episcopal Missionary Bishop of the Oregon and Washington Territory. Bishop Morris and his family including Miss Mary Rodney, a sister-in-law, made the voyage through the Isthmus of Panama to the Pacific Northwest. St. Helen's Hall was soon founded in Portland with Miss Rodney as first principal. The bell, which journeyed around Cape Horn, has hung at the new locations of the Hall these almost hundred years.

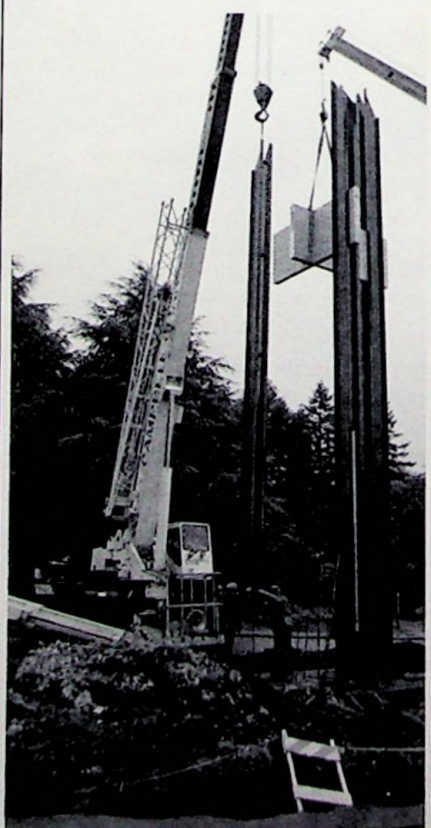
1969

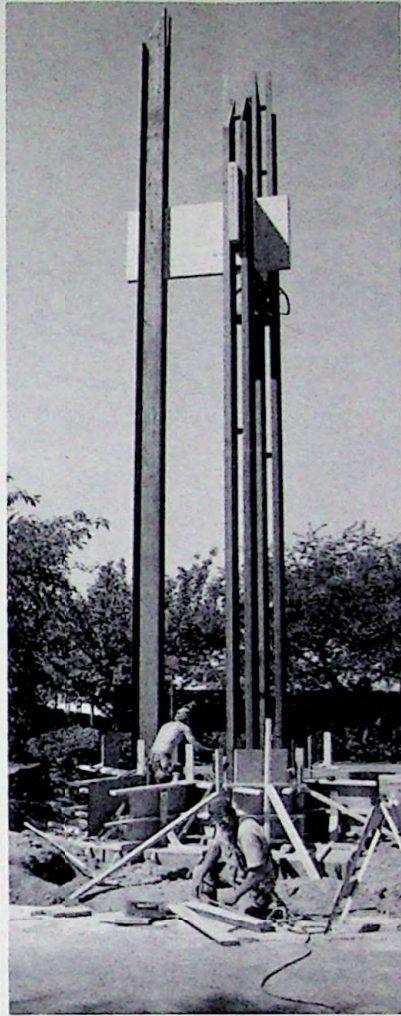
**The Oregon Episcopal School Bell Tower**

**Donated by Mr. & Mrs. Cecil Drinkward  
Mr. Drinkward, trustee 1983-1990  
Designed by Alexandra Zimmer '76  
Built in August, 1991 to House the St. Helens Hall Bell**

The three pillars supporting the cross, the three sides of the base, and the three staircases represent the Holy Trinity. The bell is suspended from a cross of Alaskan yellow cedar.

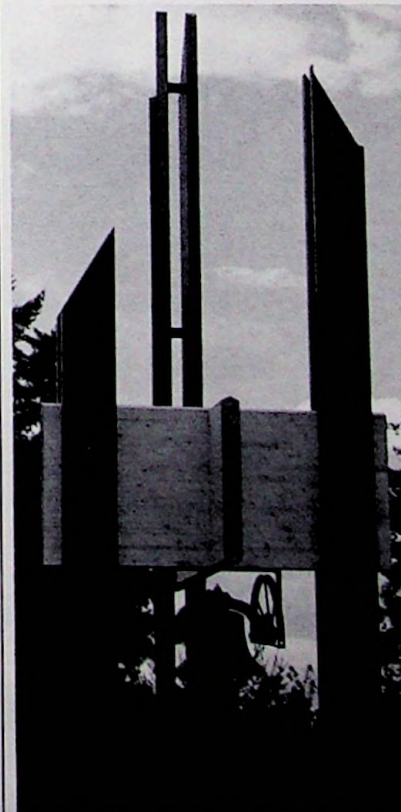
The bell was cast in 1870 and given to Bishop Benjamin Wistar Morris, one of the founders of St. Helens Hall, by his former parish. Brought around Cape Horn, the bell has hung at every site of the school since 1871.





The first bell tower to hang at the Raleigh Hills Campus. Pictured ringing the bell is Wistar Morris Adair, grandson of Bishop B. Wistar Morris, founder of the Hall. In the picture from left, Charles Gale, Mr. Adair, Tom Gale and Canon Harry L. Newton.

ca. 1965



STILL RINGING — Historic 1870 bell bell around the Mear to St. Helen's Hall in Portland was reborn in soaring 40-foot wooden sculpture on Oregon Episcopal School campus Tuesday. David Fry is one of students who did the job. (Journal photo by David Weintraub)

## 1870 St. Helen's Bell Set In Soaring Sculpture

By HELEN L. MERRISON  
Journal Staff Writer

An 1870 bell that rang generations of St. Helen's Hall students in chapel, was mounted in a soaring 40-foot wooden sculpture Tuesday on the Oregon Episcopal School campus.

A brief ceremony marked the hoisting of the Mary Rodney Bell into the tower of the structure, designed and built by upper school students under the supervision of Joe Snyder, the school's resident wood-craftsman.

At the same time, the school's third graders presented a time chronicle, which will be implanted under the structure.

The caption includes a picture of the third graders, math and English papers and a story of what it is like being a third grader in 1976. The text reads to dig up the capsule in 50 years "so that we can all be here."

While there was a tremendous air about the ceremony for the bell's 120th, it was a gala on November that topped the formal structure and prompted student body action.

The 120-year-old Mary Rodney Bell broke its yoke in the crash. But it has withstood much worse things, beginning with a portland trip from

Pennsylvania around the Horn to the mouth of the Columbia.

The bell has rung from all four St. Helen's Hall locations. In 1912 it survived a fire that destroyed the building.

Cast in Germantown, Pa., in 1870, the bell was a gift from former jurisdiction of Oregon Episcopal Bishop Benjamin Wistar Morris, who married at the site in Oregon.

Only the bell and a cross survive from the original school building.

1976

## Shap Shap Tap-a-tap-a Pound We've been working on the Playground

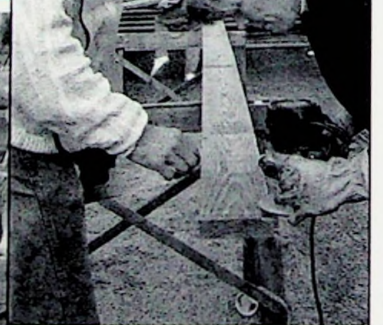
*"I don't know. Am I a skilled worker?"  
"Can you run a circular saw?"  
"Sure. You mean that gets me a red ribbon?"  
"Yup."*

The rain and the mud — deep, squishy, smelly goo — didn't stop the literally hundreds of volunteers who came to build a dream come true — the new OES "Aardvark Fun Park" April 24 to 28. Parents, students, grandparents, trustees, alumni, neighbors and friends of the School came to saw, seal, pound and shovel. Most came back for "another shift." Some worked all day every day — others showed up when they could get away from their "real jobs."

*"It's not gravel — it's round, see, to cushion kids when they fall. We had a hard time finding rock that met the architect's specifications."*

*"Wow! Is that what the dragon looks like? Where's the pirate ship? I've been over there building cubes, so I didn't see it take shape. Oh, Geez! Will you look at that. I wondered what those tires were for."*

Named the Aardvark Fun Park in a student contest, the playground began as piles of material and grew into a fantastic structure in a five-day "barn-raising-style" marathon work party. Under the leadership of parents Julie Lewis and Jana Westlund, the volunteer Playground Committee raised over \$65,000 in cash and donated materials.





**“H**ey look at me . . .  
I'm soaking wet; I need  
more coffee, and I'm hav-  
ing the best time.”

“Is that rain suit new? It  
still has folds in it — and  
besides it's not muddy  
enough.”

“Hi, there. I need some 2  
1/2" screws. They're all  
soaped, right?”

“Yeah, the little kids did it  
yesterday.”

“Yeah, I know my kid was  
pretty indignant — she  
wanted to help me run a  
screw gun or a saw or  
something that makes  
noise. We had a talk  
about how everyone has a  
part to play and she feels  
pretty good about it now.”

“Don't forget to tell her  
how much easier it is for  
you to use the screws to-  
day.”

“Great. I won't. Thanks.”

Robert Leathers, a  
playground design

specialist, collected ideas  
for the Aardvark Fun Park  
from OES students last  
November at Design Day.  
He noted that about 40  
percent of the ideas from  
OES students were  
original. In fact he had to  
try several ideas in his  
firm's test playground  
before he included them  
in his final design.  
Playgrounds by Leathers  
are characterized by the  
children's involvement in  
everything from design  
and fundraising to con-  
struction.

“Can you believe those  
kids have the energy to  
shovel gravel like that.  
They're Middle Schoolers,  
right?”

“Yeah, the whole Upper  
School was here yester-  
day. I'm getting old.”

“Yeah, I have some sore  
muscles too. But, you  
know what? Working on  
this makes me just plain  
feel good.”



## Inside the OES Boarding Program — an interview with Hamilton Gregg



Hamilton  
Gregg

Hamilton Gregg joined the OES Administrative team as Director of Residence and Assistant to the Headmaster. A native of Colorado, he learned to love the mountains and "all things wild" before heading East to boarding school at St. Mark's in Massachusetts. He returned to the West to earn a degree in political science at the University of Colorado in Boulder. After a variety of positions with companies ranging from investment counselors to mining operations, Hamilton settled at The Thacher School in Ojai, California, working in admissions. He recently earned his M.Ed. from Harvard University. Having "settled with the ghosts in the East," Hamilton is putting down roots in Portland where he is happily revitalizing the boarding program at OES.

### **The BellTower: Why should a parent send high school students to Boarding School?**

**Hamilton Gregg:** First of all, it's an opportunity for a student to grow mentally, physically and spiritually. Students have a chance to investigate, to live in a community that is small and demanding but provides access to the outdoors, has commitment to service and, in the process, asks them to take responsibility for their own actions.

Mentally, we can provide a high level of academic challenge.

Physically, at OES everyone participates - we have athletics teams for everyone who wants to play - not just varsity athletics.

Spiritually, boarding students learn about themselves, their self-

confidence is expanded, and they have the opportunity to take risks and challenges.

One of the greatest things about boarding school is that kids learn to live with others. They will be friends FOREVER!

### **The BellTower: What makes a good boarding school?**

**Hamilton:** Good boarding schools have an openness in their environment that allows teenagers to ask questions — along with a structure that allows them to question safely. This structure comes from a synthesis of the dorm parents' experience and backgrounds. It's a collective and dynamic process that builds on sound principles.

And faculty must be accessible — they live within the boarding community and show students how adults from a variety of backgrounds live successful lives.

### **The BellTower: It sounds like good parenting on a larger scale....**

**Hamilton:** Yes. We aim to teach things like respect, decorum and punctuality, in preparation for college and life. We also offer "general" parenting based on all of our backgrounds.

### **The BellTower: What are the particular strengths of the OES program?**

**Hamilton:** It's small; it can easily be individualized. There is a wonderful student:dorm parent ratio of 5:1 which means students get a lot of individual attention. And everyone knows everyone else.

At OES, unlike some boarding schools, the size of the day program allows kids access to other backgrounds, homes and friends. It gives them a wider pool.

And exceptional academics, solid sports programs and a wonderful sense of community create an environment where OES students are nurtured — where they can take certain risks. One other advantage of OES is its proximity to Portland which provides many opportunities that a great many schools must drive longer distances to reach.

### **The BellTower: What do you think the most important priorities of the OES program are?**

**Hamilton:** First, to teach students to be ongoing learners.

Second, we should help students learn to take responsibility for themselves, others and the community. This process also prepares them for college and later life.

### **The BellTower: The OES Boarding Program is clearly expanding — not just in numbers, but also in scope...**

**Hamilton:** We are trying to attract a more diverse population. We're an international program that hopes to bring diversity together for mutual understanding. All of this does not happen overnight. This is something we will be working towards for several years.

### **The BellTower: Have there been any recent specific changes that have made the program more attractive?**

**Hamilton:** We have instituted several new changes that we hope will build a stronger community. First, we are asking students to take responsibility for themselves and for the community. In this area students are assigned morning jobs that include weekly cleaning of the common areas, hallways and outside areas. We hope they will learn to respect their community. They also must clean their room thoroughly once a week.

To further the sense of community, we have removed the TVs from the common areas and placed them with the Dorm Parents. This puts the pressure on the students to be creative with their free time, and if they wish to watch TV, they can ask a Dorm Parent. The result is a more family like atmosphere - a sharing experience. We have changed the schedule so that the time will be used more productively for studying or for social time. All of this is geared toward an environment that is structured and yet conducive without being restrictive.

# THE MUSTARD SEED



“... verily I say unto you, if you had faith as a grain of mustard seed you shall say unto that mountain move hence to yonder place and it shall remove; and nothing shall be impossible unto you.”

— *Matthew 17, verse 20*



**ANNUAL REPORT  
OF GIVING**

**1 9 9 0 - 9 1**

OREGON EPISCOPAL SCHOOL

# Headmaster's Report

Dear Friends,

It is with great pleasure that we share with you the OES ANNUAL REPORT for 1990-91, my first year as Headmaster at this wonderful school. This was an excellent year by so many measures! Our Annual Fund broke all OES records and topped a quarter of a million dollars in unrestricted support for the first time.

It was a year in which we received the largest single gift in the modern history of the School: \$500,000 for the renovation of the Sports and Recreation Center (SPARC), the old Hampton Courts, which the School purchased two years ago.

It was a year in which total giving to the School reached the \$1,127,000 mark.

It was a year in which total enrollment topped 650 and we enjoyed the bittersweet challenge and blessing of wait-lists at many grade levels.

It was a year in which hundreds of volunteers made possible the realization of the stunning new playground, the Aardvark Fun Park.

It was a year for strategic planning. Some 80 members of the faculty, students, parents, trustees, alumnae/i and friends gave time and creativity and wisdom in the School wide planning effort, OES/21, or "OES for the 21st Century."

It was a year of joy and learning, growth and excitement, dedication and revitalizing for our inclusive student body, our committed faculty, our selfless Board of Trustees, our trusting parents and our faithful alumnae/i.

And for me, it was a year of riding the steepest learning curve I've ever mounted as I confronted the wonder

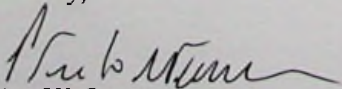
of OES and attempted to get to know our hundreds and hundreds of family members. I found a school that is on the threshold of greatness. Our books are balanced. Our budgets are wise and productive. Our plant is receiving the attention it deserves. Our education is sound and exciting and in demand.

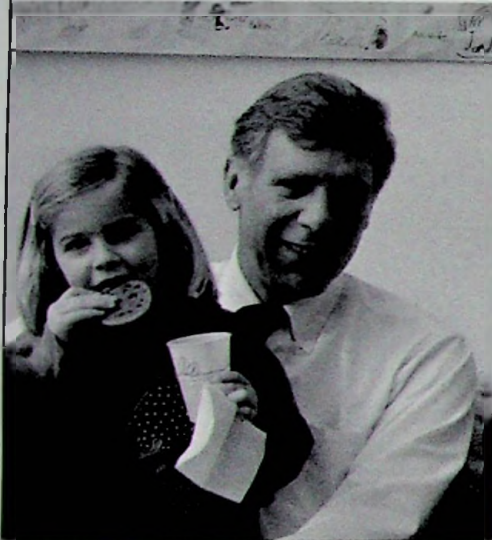
And, perhaps most important of all to me: we are willing to look at ourselves critically, to recommend change and continued growth and to plan eagerly for our future in a world that changes at a dizzy and bewildering pace, amidst a Northwest community that is clearly outpacing other regions in stature, sophistication, quality of life and population.

This Annual Report is a positive testimony to the generosity and willingness and faith of all of you who support this school: with your children, your work, your resources and your hopes. It is the record of a year; a photographic slide. Hence, our presentation can be but two-dimensional. Please translate it, as I do all the time, into the third dimension as you dwell on the energy, the excitement and the sparkle of the people of all ages whose names and achievements are recorded here.

If, as H. G. Wells admonished, "human history becomes more and more a race between education and disaster," then the OES community is indeed doing its part for the team we all back to win, and doing it well indeed.

Sincerely,

  
Peter W. Stevens



# Report From The President Of The Board Of Trustees

Dear Friends,

The 1990-91 year at OES was a "year of transition." We elected a new president of the Board of Trustees and installed a new headmaster. This year was also marked by success in enrollment, annual giving and educational development.

Under the leadership of our new headmaster, Peter Stevens, we renewed our commitment to the long-range strategies previously approved by the Board of Trustees and began the initial implementation of our strategic plan under the banner "OES/21."

Through the dedicated efforts of the OES Development Team guided by Ed Clark and Brenda Sloan, we achieved a record level of contributions to our Annual Fund during the 1990-91 year.

We are very grateful for the support of the alumnae/i, parents and special friends of OES who have given so generously during the past year. I would like to acknowledge several major gifts received during the past year in support of our capital development and educational programs.

- Major gifts toward the renovation and debt retirement of SPARC provided by Mr. & Mrs. Charles A. Adams, Mr. & Mrs. Peter F. Bechen, Mr. & Mrs. Edwin Hunt, Mr. & Mrs. William T. C. Stevens and Mr. & Mrs. C. N. Winningstad.
- A \$500,000 gift for SPARC renovation given by a dear friend of OES who wishes to remain anonymous.
- A gift to network the dormitory residences with the main computer system and to refurbish the International Student Lounge was also given anonymously.
- A donation by Tadaki and Sadako Kawada to fund the Upper School Global Studies Program.

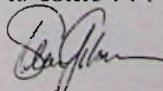
- A special pledge from Mr. & Mrs. Cecil Drinkward for the construction of a new Bell Tower that will serve as a central focal point of the campus.

One of the greatest strengths of our School is the level of volunteer support from our parent community. During the past year, this expression of support reached a new level with Julie Lewis' and Jana Westlund's vision for a children's park at OES. A vast team of parents, friends and donors gave their time, talent and enthusiasm to this project. Together, we created the "Aardvark Fun Park" which will stand for years to come as a monument to the dedication and spirit of the OES community.

I would also like to recognize the efforts and dedication of Peter Hoffman and his "tennis team" who put together an extraordinary educational tennis camp available to our children as well as the community at large.

We now begin a new school year with record enrollment, a strong financial base and a renewed sense of direction focused on educational excellence. As a result of the legacy of leadership created by Leigh Stephenson and Cecil Drinkward, OES is well positioned for future growth.

I would like to express my personal thanks and appreciation to the trustees, educational staff and parents of OES who have given so generously of their time to make this such a special place for our children. With your continued commitment, I believe that the "best is yet to come . . ."



Sean Gilronan, President  
OES Board of Trustees

## Oregon Episcopal School Board of Trustees 1990-91

The Rt. Rev. Robert L. Ladehoff,  
*Chairman*  
Mr. Sean Gilronan,  
*President*  
Dr. Barbara Gaines,  
*Vice President*  
Mr. Peter F. Bechen,  
*Treasurer*  
Mrs. Barbara Herbold,  
*Secretary*

Rev. Thomas Breidenthal  
Dr. Edgar Clark  
The Very Rev. Roy Coulter,  
Mrs. Frank Dorscheimer  
Mr. Sho Dozono  
Mr. Norman Frink  
Mrs. Ginger Harrison  
Mrs. Betty Hedberg  
Mrs. Cinda Hoffman  
Ms. Betsy Johnson  
Mr. Henry G. Laun  
Rev. Robert Morrison  
Mrs. Dorothea Pinch  
Mr. David Pratt  
Mr. Michael C. Scheetz  
Mr. Paul R. Schlesinger  
Mrs. Kay Sotka  
Mr. Leigh Stephenson  
Mr. Dale Stewart  
Mrs. Carole J. Thomas

Mrs. Eleanor Milne,  
*Alumni Association President*  
Mrs. Lenita Scheetz,  
*Coordinating Council President*  
Mr. Peter W. Stevens,  
*Headmaster*



## MAJOR BENEFACTORS

OES is fortunate to have the generous support of the following donors whose gifts in 1989-90 totalled \$2,500 or more. They give in many ways — to enrich the operating budget, to improve the campus and to build the endowment. Our thanks to them!

ANONYMOUS

ANONYMOUS via  
Oregon Community Foundation

Mr. & Mrs. Charles A. Adams

Adams Foundation

Mrs. Ned B. Ball

Mr. & Mrs. Peter F. Bechen

Estate of Nancy S. Chipman

Dr. & Mrs. Edgar Clark

Estate of Spencer R. Collins

Mr. & Mrs. Cecil Drinkward

Mr. & Mrs. C. R. Duffie

Mr. & Mrs. Lee T. Dulin

Henry Failing Fund

Mr. & Mrs. Richard Geary

Mr. & Mrs. Sean Gilronan

Mrs. Judith Holmes

Ms. Sue Lake Howell

Mr. & Mrs. Edwin Hunt

The Ralph & Adolph Jacobs Foundation

S.S. Johnson Foundation

Mr. & Mrs. Tadaki Kawada

Mr. & Mrs. Kim Lundgren

James and Lila Miller

OES Lower School PTG

Mrs. Cynthia Coats Railton

Mr. & Mrs. Chai Sophonpanich

St. John Baptist Convent

Mr. & Mrs. William T. C. Stevens

Mr. & Mrs. Dale Stewart

Mr. & Mrs. Ernst Stoeckl

Dr. & Mrs. Stephen J. Thomas

Rose E. Tucker Charitable Trust

Richard and Jana Westlund

Mrs. Bettybell Tubbs Watzek

Mr. & Mrs. C.N. Winningstad



# CONTRIBUTIONS TO OES

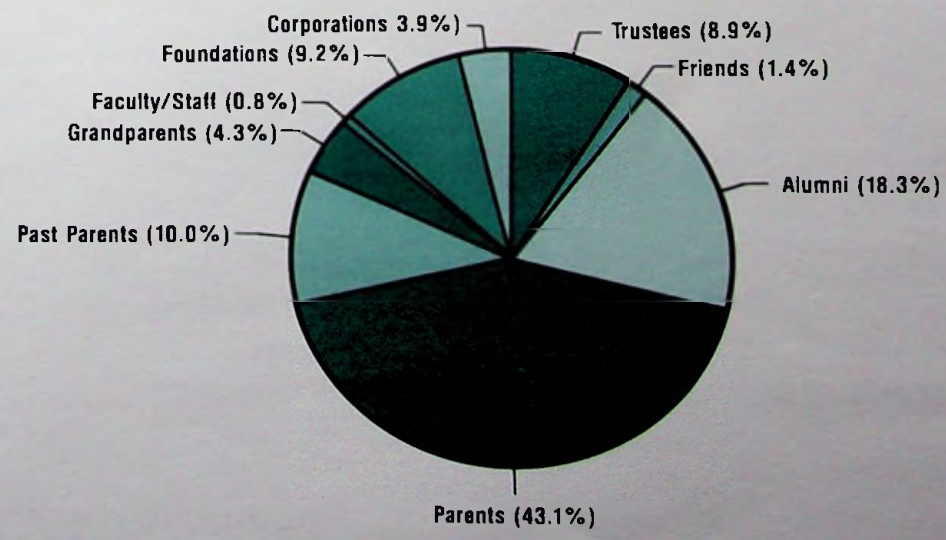
## Summary of Unrestricted Gifts — the Annual Fund

SOURCE	NUMBER OF DONORS	TOTAL GIVING
Trustees	26	\$22,952
Alumni	371	47,335
Parents	376	111,134
Past Parents	83	25,864
Grandparents	29	11,190
Friends	31	3,671
Faculty/Staff	58	2,062
Foundations	6	23,778
Corporations	10	5,250
Matching Gifts	17	4,797
<b>TOTAL Unrestricted</b>	<b>1007</b>	<b>\$258,034</b>

## Summary of Restricted Gifts — Endowment, Capital and Other

SOURCE	NUMBER OF DONORS	TOTAL GIVING
Endowment	14	\$68,147
Capital Gifts	17	64,381
SPARC	6	586,000
Restricted	117	150,683
<b>TOTAL (Restricted)</b>	<b>154</b>	<b>\$869,211</b>
<b>TOTAL GIVING</b>	<b>1161</b>	<b>\$1,127,245</b>

### OREGON EPISCOPAL SCHOOL FY 1991 Unrestricted Gifts By Source



# OES ENDOWMENT FUNDS

## Endowed Faculty Chairs

	90-91 Allocation	6/30/91 Market Value
Beatrice L. Gerlinger Endowed Chair in Mathematics	\$27,593	\$449,582
Winningstad Chair in the Physical Sciences	\$18,709	\$304,840

## Endowed Scholarships

Anonymous	\$1,603	\$26,172
Barclay Ball-McCall Scholarship	\$10,018	\$168,440
John C. Bechen Memorial Scholarship Fund	\$800	\$13,034
Spencer Collins Scholarship Fund	\$47,229	\$778,966
Louise Donaldson Memorial Scholarship	\$1,709	\$27,850
Gertrude Houk & Cris Fariss Scholarship Fund	\$724	\$11,792
Edward E. Ford Foundation Endowed Scholarship	\$2,101	\$34,231
Paul Gerhardt Memorial Scholarship	\$6,501	\$105,929
Melba Byron Hess Scholarship Fund	\$22,235	\$362,280
Jane Hiller Endowed Scholarship	\$4,767	\$77,667
Jack S. Howard Scholarship Fund	\$957	\$15,965
Samuel S. Johnson Foundation Endowed Scholarship	\$1,547	\$25,199
Barbara Hirschi Neely Memorial Scholarship Fund	\$9,597	\$156,369
OES Endowment	\$8,885	\$144,766
Reader's Digest Endowed Scholarship	\$3,200	\$52,133
St. Helens Hall Endowed Scholarship	\$6,811	\$111,227
David Sellers Memorial Scholarship Fund	\$1,085	\$17,710
Louise Washburn Trust	\$867	\$18,917

## Endowment Funds

OES Memorial	Art Experience	\$1,842	\$30,017
Ruth Rose Richarson Memorial Fund	Athletics	\$1,840	\$30,174
T.J. Kempton Endowment	Coaching Salaries	\$477	\$7,779
Faculty Enrichment Endowment Fund	Faculty Enrichment	\$1,571	\$25,591
Bernice Bean Endowment	Guest Artist	\$128	\$2,081
Learning Skills Dev./Grover Fund	LS Teacher Training	\$1,633	\$26,600
Music/Economics Faculty Endowment	Music/Economics Salaries	\$4,710	\$76,738
Board Designated Endowment	Operating Expenses	\$3,172	\$73,213
J. Milne Manson	Student Award	\$32	\$515
Benjamin D. Dagwell Endowment	Teacher Retirement Benefits	\$7,660	\$124,803

**TOTAL**

**\$200,000**

**\$3,300,578**



## GIFTS

### GIFTS FOR CAPITAL PURPOSES

#### **SPARC - Sports and Recreation Center**

During 1990-91, gifts continued to arrive for the renovation and debt retirement of the OES Sports and Recreation Center (SPARC), including an anonymous gift of \$500,000. This half-million dollar gift is the largest single gift OES has received since the construction of the Raleigh Hills campus in 1963.

The renovation of the athletic center is scheduled to begin in early fall.

Our special thanks to the leadership and dedicated support of this anonymous donor, and to all others who contributed to SPARC in 1990-91:

#### ANONYMOUS

Mr. & Mrs. Charles A. Adams  
Mr. & Mrs. Peter F. Bechen  
Mr. & Mrs. Edwin Hunt  
Mr. & Mrs. William T. C. Stevens  
Mr. & Mrs. C.N. Winningstad



#### **Spruce Up for the 90's Campaign**

The "Spruce Up for the 90's Campaign" is a three year project initiated by the Board of Trustees in February 1990 to raise \$250,000 to cover the cost of campus repairs and improvement. Work done over the past year includes replacing the roofs on the Lower School, Scott, Morris and Jackson Houses, recarpeting and painting our two dormitory residences (Rodney and Jackson Houses), along with a multitude of gardening and landscaping work. OES is very grateful to the following donors who helped make these improvements possible:

Mr. & Mrs. Peter F. Bechen  
The Very Rev. & Mrs. Roy Coulter  
Mr. & Mrs. Frank Dorscheimer  
Mr. & Mrs. Cecil Drinkward  
Mr. & Mrs. Sean Gilronan  
Mr. & Mrs. Stephen A. Gregg  
Mr. & Mrs. Ken Harrison  
Mr. & Mrs. James Herbald  
The Ralph & Adolph Jacobs Foundation  
S.S. Johnson Foundation  
The Rt. Rev & Mrs. Robert L. Ladehoff  
Mr. & Mrs. Michael C. Scheetz  
Mr. Paul R. Schlesinger  
Mr. & Mrs. Leigh Stephenson  
Mr. & Mrs. Dale Stewart  
Dr. & Mrs. Stephen J. Thomas

#### **Residential Computer Network and Refurbishing of the International Student Lounge**

The final phase of the plan to integrate computers into the OES curriculum is underway. An anonymous gift of \$20,000 was given to network all dormitory residences and the main computer system. This gift also included refurbishing the International Student Lounge.

### GIFTS TO ENDOWMENT

Each year \$200,000 of operating expenses are offset by income from the OES endowment. Allocations from endowed funds, such as scholarships and endowed faculty chairs, help provide perpetual support for education and lessen our reliance on tuition.

#### **Barclay Ball-McCall Scholarship** Mrs. Ned B. Ball

#### **Spencer Collins Scholarship Fund** Estate of Spencer R. Collins

#### **Gertrude Houk & Cris Fariss Scholarship Fund** Betty Lou Dunlop

#### **St. Helens Hall Endowed Scholarship** Estate of Jonathan Glenn Charmian Kolar Hilleary

#### **Jack S. Howard Scholarship** Mrs. Jemison Cain Spriggs in loving memory of John & Eleanor Cain

#### **Susan McClave Memorial Fund** Ms. Jean Baker Watkins

#### **Ruth Rose Richardson Fund** Mrs. Janice Parker Barnette Ruth Rose Richardson Foundation

#### **David Sellers Memorial Scholarship Fund** Mr. Douglas Kezeor

#### **Bequests**

The Estate of Grant Armstrong  
The Estate of Nancy S. Chipman  
The Estate of Jonathan Glenn  
The Estate of Bettybell Tubbs Watzek

# GIFTS

## RESTRICTED GIFTS FOR OPERATING PURPOSES

The following are gifts for specific purposes. OES is grateful for this broad based support in addition to the Annual Fund. Restricted gifts give latitude to a donor so that they may give additional support to a specific program at OES.

### Athletic Department

Mary Anne & Russ Boardman  
Bonnie Dunbar Hahn  
Dr. Michael E. Sullivan

### Board Meeting Expenses

Mr. & Mrs. Sean Gilronan

### Building & Grounds

Lynne Parise & Mark Williams

### Counseling & Guidance

Mr. & Mrs. Thomas M. Landye  
Dr. & Mrs. Patrick Radecki

### Drama Department - Light Board

Lynne Parise & Mark Williams

### Faculty Development

Friends of the Hall

Every year, donors honor and recognize teachers with a gift to the Friends of the Hall Fund, which provides support for faculty development.

### ANONYMOUS

Drs. Nick & Dolores Orfanakis

Leora H. Sayre  
Emerson & Helen Sims  
In honor of Donna Beemer  
Mr. & Mrs. Kenneth A. Gilbert  
In honor of Helen Linster  
Christopher & Kelley Platt  
In honor of Cynthia Marshall  
Mr. & Mrs. Timothy Bliss  
Dr. & Mrs. Peter B. Lyon  
In honor of Lou Paff  
Mr. & Mrs. Arthur Grate  
In honor of Eileen Preston  
Ms. Luan Housel-Miller  
In honor of Joyce Schafer  
Mr. & Mrs. Robert Ames  
In honor of Cherie Yokata & Gretch Linder  
Mr. Timothy McCarthy

### Fencing Program

Mr. & Mrs. William S. Findlay  
Mr. & Mrs. Dharma Surya

### Financial Aid Gifts

St. John Baptist Convent  
Mr. William T. Cromwell

### Global Studies

Mr. & Mrs. Tadaki Kawada  
Mr. & Mrs. Ernst Stoeckl

### Lower School Assemblies

Beth Mason & Greg Sweigert

### Middle School Track Coach

Drs. James W. & Diane Baker

### Public Relations Advertising

Ms. Elizabeth Johnson

### Resident Department Gifts

Mr. & Mrs. Lee T. Dulin  
Lynne Parise & Mark Williams

### Science Program

Lynne Parise & Mark Williams

### Upper School Library Shelving

Rose E. Tucker Charitable Trust

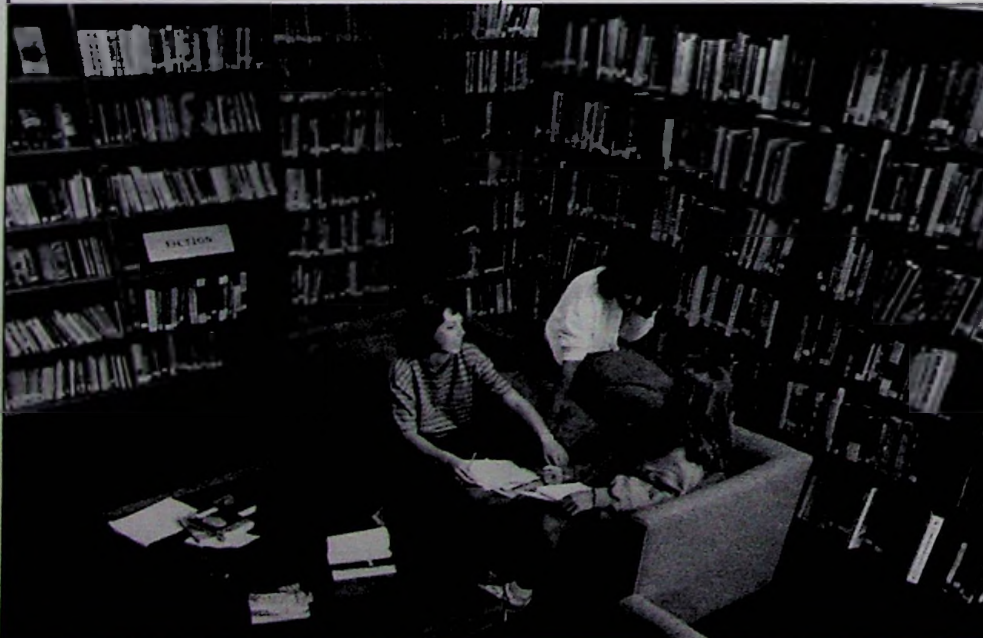
## Tributes

### Lower School Library Gifts - Birthday Books

These gifts honor birthdays of OES students.

#### ANONYMOUS

Mr. & Mrs. Richard Alexander  
Mr. & Mrs. Robert Ames  
Dr. & Mrs. Ken H. Barker  
Kay & Marty Brantley  
Mr. & Mrs. Jean D. Brault  
Mr. & Mrs. Stuart Brown  
Mr. & Mrs. Larry Brown  
David & Ellen Burns  
Mr. & Mrs. David Bussman  
Mr. & Mrs. Joseph Cade  
Mr. & Mrs. Michael Carrier  
Dennis & Gayle Collins  
Mr. & Mrs. Paul R. Cooper  
Mr. & Mrs. William Corwin  
Mr. & Mrs. Bryan M. Cullivan  
Bill & Wendy Darden  
Janet Maurer & William Davenport  
David & Christine Dew  
Matthew Miller & Kathleen Dodds  
Martha & Richard England  
Jay & Linda Enloe  
Robert Bennett & Karen Fast  
Carol F. Floten  
Victoria J. DeVito & Craig L. Fuller  
Robert & Jacquilin Gawlik  
Mr. & Mrs. Gerry Gerard  
Mr. & Mrs. Kenneth A. Gilbert  
Mr. & Mrs. Allan L. Goodman  
Mr. & Mrs. Clarence Greenwood  
Mr. & Mrs. Robert S. Gregg  
Brian & Janice Harwood  
Mr. & Mrs. Sanford Haskins  
Ms. Alice Haskins  
Mr. & Mrs. Daniel Hatton  
Tom & Liz Head  
Mr. & Mrs. James Herbold  
Mr. & Mrs. Henry H. Hewitt  
Mr. & Mrs. John D. Karamanos III  
Dr. & Mrs. Loren Jenkins  
Ms. Rebekah E. Johnson  
Mr. & Mrs. Reilly Jones  
William C. & Gena R. Berg  
Mr. & Mrs. Robert S. Auguston, Jr.  
Mr. & Mrs. Lawrence R. Kaplan  
Mr. & Mrs. Kevin F. Kerstiens  
Jan & Chris Kitchel  
Mr. & Mrs. Klaus Kleber  
Curtis R. & Mariann Koop  
Dr. & Mrs. Walter R. Krieger  
Dr. & Mrs. Robert J. Laird  
Mrs. Abby Landon  
Dr. & Mrs. W. David Larson  
Tom & Dana Lewis  
Wesley & Julie Lewis  
Warren Hirsch & Kate Loggan  
Thomas Chou  
Mr. & Mrs. David C. Lukens  
Cathi Lutz  
Dr. & Mrs. Peter B. Lyon  
Dr. & Mrs. Robert Matheson  
Mr. & Mrs. Curtis E. McCracken  
Sarah R. McNary  
Mr. & Mrs. Alan J. Mellinger



# GIFTS

Mr. & Mrs. Russell D. Mickiewicz  
 Dr. & Mrs. Christopher Morgan  
 Greg & Diane Morgan  
 Mr. & Mrs. Paul F. Oldshue  
 Dr. & Mrs. Gary Ostenson  
 Mr. & Mrs. C. Paul Patsis  
 Mark & Rosanne Perry  
 LouAnn Pickering  
 Christopher & Kelley Platt  
 Mrs. Eileen M. Preston  
 Dr. & Mrs. Patrick Radecki  
 Mr. & Mrs. Jerry C. Reeves  
 Susan & Lawrence Rein  
 Harvey & Miriam Rogers  
 Mr. & Mrs. Ken W. Sakai  
 Drs. John & Trudy Samples  
 Richard & Mary Sapp  
 Mr. & Mrs. James Sassalos  
 Mr. & Mrs. Milan Savich  
 Miles & Patsy Seeley  
 Dr. & Mrs. Jack S. Semura  
 Geoff & Bonnie Simmonds  
 Mr. & Mrs. Paul Smith  
 Mr. & Mrs. Robert Spivack  
 Beth Mason & Greg Sweigert  
 Mr. & Mrs. David B. Taylor  
 Mr. & Mrs. John B. Taylor  
 Ned & Anne Thanhouser  
 Thomas Crawford & Janet Trullinger  
 Mr. & Mrs. Peter Turney  
 Dr. & Mrs. Edward E. Ward  
 Dr. & Mrs. Richard N. Westlund  
 Mr. & Mrs. Jack G. Wilborn  
 R. Michael Wilhite & Nancy Pole-Wilhite  
 Dr. & Mrs. Ian Young  
 Dr. & Mrs. Steven Zack  
 Karen & Don Zocchi

## MS/US Library Gifts & Remembrances

OES Alumni Association  
 Mrs. Helen F. Weber  
 Lynne Parise & Mark Williams  
 Warren Hirsch & Kate Loggan

In memory of Katherine Barbey  
 Marjory Holman Day  
 Mr. & Mrs. Leslie Sherman  
 In memory of Bonnie Bronson  
 Mr. & Mrs. Dave G. Bronson, Jr.  
 Mrs. Rhoda Holman Statter  
 In memory of John & Eleanor Cain  
 Jemi, Kerrie & Amy Spriggs  
 In memory of Jennifer Horniman  
 Dr. & Mrs. John M. Coletti, Jr.  
 Mr. & Mrs. Harry Glickman  
 Ms. Jennifer Glickman  
 In memory of Nancy Hilton Leary  
 Mr. & Mrs. Benjamin Bullwinkle  
 Mrs. Elizabeth Pownall Swindells  
 In memory of John McDonald  
 Mrs. Elizabeth Koski  
 In memory of Ruth Rose Richardson  
 Mr. & Mrs. Benjamin Bullwinkle  
 In memory of Cathryn Collins Roberts  
 Mr. & Mrs. Benjamin Bullwinkle  
 In memory of Bettybell Tubbs Watzek  
 Mrs. Mary Janelle Jacques

## GIFTS IN KIND

ANONYMOUS  
 Virginia Carmichael  
 Layne Caswell  
 Dean Witter Reynolds, Inc.  
 Maryanne Hill  
 Pacific Sporting Goods  
 Packaging Specialties  
 Portland General Electric  
 Dr. and Mrs. Miles Seeley  
 Mrs. Samuel Van Vactor

## Graduation Party

Chair: Darlene Willard

The All Night Drug and Alcohol-Free Senior Party provides a joyous and safe way for our graduates to celebrate this important day in their lives. We thank all those whose donations and work made this event a success.

Chair: Darlene Willard  
 Mr. & Mrs. Tony Adams  
 Dr. & Mrs. Attab Ahmad  
 Donald & Vicki Becker  
 Dr. & Mrs. Hans Behrens  
 Mr. & Mrs. Charles Bell  
 Mr. & Mrs. Joerg Bleek  
 Mr. Allyn Brown  
 Burger King  
 Dr. & Mrs. Daack  
 Mr. & Mrs. Roderic Diman  
 Domino's Pizza  
 Mr. Formal  
 Mr. & Mrs. Michael Gold  
 Mr. & Mrs. Steve Gregg  
 Dr. & Mrs. Roger Hallin  
 Mr. & Mrs. Ronald Harriman  
 Mrs. Sheryl Houser  
 Mr. & Mrs. Ed Hunt  
 Izzy's Pizza  
 Joseph's Shoes  
 KATU/Portland Trailblazers/  
 Blue Cross-Blue Shield of Oregon  
 KGON  
 Mr. & Mrs. John Koegler  
 MADD  
 Malellis  
 Mr. & Mrs. William McKay  
 Fred Meyer  
 New York Bagel Boys  
 Nike, Inc.  
 Mr. & Mrs. Bill Ou  
 Mr. & Mrs. Tom Owens  
 Mr. & Mrs. Ramon Palanca  
 Pietro's Pizza  
 Mr. & Mrs. Gene Raleigh  
 Mr. & Mrs. Chuck Reali  
 Dr. & Mrs. George Reviere  
 Round Table Pizza  
 Mr. & Mrs. Saunby  
 Mr. & Mrs. James Schlueter  
 Dr. & Mrs. Paul Snyder  
 Mr. & Mrs. Emanuel Tanne  
 Drs. Mark & Hellen Tochen  
 Mr. & Mrs. Bill Willard

*"Working as an Annual Fund volunteer has been inspiring. The personal contact with all the wonderful parents, and knowing that what we do as volunteers has a major impact on the programs that OES offers, makes all the difference to me."*

— Alan Miller, Personal Solicitation Chair



# THE ANNUAL FUND

## Unrestricted Gifts

*1990-91 Annual Fund Chairs - Dennis and Patty Winningstad*

Each year, Oregon Episcopal School conducts an Annual Fund drive to raise unrestricted dollars to supplement the operating budget. These funds provide the backbone of our support and enable OES to retain that special Margin of Excellence.

During the 1990-91 school year, over 1000 generous donors gave to the OES Annual Fund. Their collective efforts helped us surpass the quarter-million mark for the first time in history: \$258,034. We would like to take this opportunity to thank and acknowledge their stewardship of Oregon Episcopal School.

## DONOR CLUBS

### *The Rodney Society*

Sharing in the vision of Mary Burton Rodney, the following donors expressed their confidence in OES through impressive generosity. More than half the total Annual Fund results from gifts of Rodney Society members. We are very grateful for their dedicated support.

### Lifetime & Honorary Members

Mr. Howard Baker  
Mrs. Ned Ball

Mrs. James W.F. Carman  
Mrs. Norman Chew  
Mr. Robert Donaldson  
Mr. & Mrs. Paul Gerhardt, Sr.  
Mr. & Mrs. Robert Grover, Sr.  
Mrs. Edmund Hayes  
Mrs. Wilbur Hiller  
Mr. & Mrs. Edward S. Holden  
Mr. & Mrs. David Munro  
Mr. B.H. Sellers  
C.N. & Dolores Winningstad

### Bishop's Circle

*Unrestricted gifts of \$10,000 or more*

Mr. & Mrs. C. R. Duffie  
Henry Failing Fund  
Ms. Sue Lake Howell  
Mr. & Mrs. Chai Sophonpanich

### Leadership Circle

*Unrestricted gifts of \$5,000 to \$9,999*

Mr. & Mrs. Cecil Drinkward  
Mr. & Mrs. Richard Geary  
Mrs. Judith Holmes  
Mrs. Bettybell Tubbs Walzek

### Trustee's Circle

*Unrestricted gifts of \$2,500 to \$4,999*

ANONYMOUS  
Adams Foundation  
Mr. & Mrs. Peter F. Bechen  
Dr. & Mrs. Edgar Clark  
Mr. & Mrs. Kim Lundgren  
Mrs. Cynthia Coats Railton  
Dr. & Mrs. Stephen J. Thomas

### Associates

*Unrestricted gifts of \$1,000 to \$2,499*

ANONYMOUS  
Mr. & Mrs. Charles A. Adams  
Mr. & Mrs. Richard Alexander  
Mrs. Jane Mount Ammerman  
- in honor of Dr. & Mrs. Frank Mount  
Mrs. Alyce Cheatham  
Dr. & Mrs. John R. Chessar  
Drs. Charles Colip & Elizabeth Tindall  
Mrs. Kuniko deWeese  
Mr. & Mrs. Ted F. Freres  
Mr. & Mrs. Sean Gilronan

Mr. & Mrs. Rodger M. Glos  
Mr. & Mrs. Stephen A. Gregg  
Mrs. Gail Bitar Grodem  
Mr. & Mrs. Bruce E. Hagensen  
Mr. & Mrs. Ken Harrison  
Dr. & Mrs. T. David Hayes  
Jason & Maria Herven  
Mr. & Mrs. Edwin Hunt  
Mr. & Mrs. Alan James  
Dr. & Mrs. Michael Kaempf  
Mr. & Mrs. John D. Karamanos III  
Mrs. Elizabeth F. Kerr  
Dr. & Mrs. Daniel Kim  
Mrs. Marion Farrell Kingery  
Mr. & Mrs. Wayne Kuni  
Dr. & Mrs. Robert J. Laird  
Mr. & Mrs. Thomas M. Landye  
Mr. & Mrs. Henry G. Laun  
Dr. & Mrs. Peter B. Lyon  
Malarkey Foundation  
Dr. & Mrs. Robert Matheson  
Mr. & Mrs. Thomas E. McClung  
Mrs. Eleanor Staehli Milne  
Lynne Parise & Mark Williams  
Mr. & Mrs. Jerry C. Reeves  
Betty Lou Roberts  
Drs. Joe & Margaret Robertson  
Mrs. Geraldine Hanny Sargent  
Mr. & Mrs. Michael C. Scheetz  
Mr. Paul R. Schlesinger  
Mr. & Mrs. Leigh Stephenson  
Mr. & Mrs. William T. C. Stevens  
Mr. & Mrs. Stephen Taylor  
Mrs. Elizabeth Pownall Swindells  
- in memory of Nancy Hilton Leary  
Drs. Mark & Helen Tochen  
Mr. Hugh Walker  
Mrs. Frances Warren  
Dr. & Mrs. James L. Waskey  
Mr. & Mrs. Robert Wechsler  
Mr. & Mrs. Robert K. Winger  
Mr. & Mrs. C.N. Winningstad  
Mr. & Mrs. Robert Wood

### Headmaster's Club

*Unrestricted gifts of \$500 to \$999*

ANONYMOUS  
Mr. & Mrs. Theodore H. Bokemeier  
Mr. & Mrs. Jean D. Brault  
Richard & Nancy Chapman  
Mr. & Mrs. Joseph A. Connolly, Jr.  
Rev. & Mrs. Donald A. Cornell  
Mr. & Mrs. Bryan M. Cullivan  
Mr. Sho Dozono  
Brent & Nina Erensel

H. Storm Floten  
James C.F. Foo  
Dr. & Mrs. Donald W. Froom  
Mr. & Mrs. Ronald Harriman  
Mr. & Mrs. James D. Kirkmire  
Drs. G.T. & S. Krishnamurthy  
Mr. & Mrs. Alan E. Miller  
Mrs. Robert B. O'Connor  
Mr. Harry J. O'Donnell Jr.  
Mr. & Mrs. William Juh Ou  
Mr. & Mrs. John W. Rath  
Mr. & Mrs. Daniel Ritter  
Eric T. & Pamela B. Sankey  
Mr. & Mrs. James Sassalos  
Dr. & Mrs. William Scheible  
Miles & Patsy Seeley  
Ms. Adrienne Souther  
Mr. & Mrs. Dale Stewart  
Mr. & Mrs. Samuel Van Vactor  
Mr. Bernard J. Westlund  
Mr. & Mrs. Jack G. Wilborn  
Mr. & Mrs. W.R. Willard  
Mr. & Mrs. Dennis S. Winningstad  
Dr. & Mrs. Ian Young

### Hallmark Club

*Unrestricted gifts of \$250 to \$499*

ANONYMOUS  
Dr. David Abbott  
Dr. & Mrs. Aftab Ahmad  
Mr. & Mrs. Robert Ames  
Jim & Mary Ann Asaph  
Jim Augsburg  
Mr. & Mrs. Ike Bay  
Mr. & Dr. Daniel Bedell  
Mr. & Mrs. Charles L. Bell  
John Berman  
Dr. & Mrs. John Berwind  
William Den Beste & Wyn Bowler  
Kay & Marty Brantley  
Mrs. Audra Haffenden Braun  
Paul A. & Debra L. Brodie  
Drs. Moir & Sarojini Budden  
Mr. & Mrs. Paul A. Buescher  
Dr. & Mrs. Walter R. Buhl  
David & Ellen Burns  
Jonathan & Ellen Carder  
Ms. Virginia O. Carmichael  
Ding & Patsy Chan  
John & Janet Charlton  
Inder & Sushma Chawla  
Mrs. George W. Conklin  
Dr. & Mrs. Aloys J. Daack  
Mr. & Mrs. Gerald Dobbie  
Mr. & Mrs. Michael F. Donnelly

# THE ANNUAL FUND

Mr. & Mrs. Frank Dorscheimer  
 Jack & Laura Doyle  
 Mr. & Mrs. Grant Farr  
 Carol F. Floten  
 Mr. & Mrs. Mark Foster  
 Mr. & Mrs. Rene E. Fritz, Jr.  
 Mr. & Mrs. Robert S. Fuller  
 James B. & Barbara L. Gaffney  
 Gail Gearin  
 Kristine M. Gebbie  
 Mr. & Mrs. Harold K. Gray, Sr.  
 Mr. & Mrs. Clarence Greenwood  
 Mr. & Mrs. Robert S. Gregg  
 Glen & Tina Grodem  
 Mr. & Mrs. Howard Harris  
 Mr. & Mrs. Sanford Haskins  
 Mr. & Mrs. Ben Hedlund  
 Mr. & Mrs. James Herbold  
 Jerry Herman  
 Mr. & Mrs. Henry H. Hewitt  
 Jim & Jan Hibbard  
 Mr. Michael Holmes  
 Dr. & Mrs. Frederic Y. W. Ing  
 Mrs. Kathryn R. Janssen  
 Mr. & Mrs. Patrick Jensen  
 Ms. Elizabeth Johnson  
 Mr. John H. Kerslake  
 Mr. & Mrs. Wayne Kingsley  
 Mr. & Mrs. Klaus Kleber  
 Mrs. Molly Clair Krause  
 Mr. & Dr. Louise & Barry Kremkau  
 Dr. & Mrs. Walter R. Krieger  
 Mr. & Mrs. Tsutomu Kyuzaki  
 Carl E. & Dorothy Larsen  
 Drs. Fernando & Dolores Leon  
 Mr. & Mrs. Tom Lipman  
 Gilbert & Jacqueline Lipshutz  
 Mrs. Joan Bokemeier Lucero  
 Mr. & Mrs. Frank T. Malley  
 Atsuko Matsuyama & Izuru Inaue  
 John & Pauly McClelland  
 Mr. & Mrs. Curtis E. McCracken  
 Mr. & Mrs. Morgan J. Mercer  
 Matthew Miller & Kathleen Dodds  
 Michael & Dana Morasch  
 Edwin & Sharon Mueller  
 Fred & Gayle Nachtigal  
 Ms. Margaret Smith Newhall  
 Col. & Mrs. George G. Northrup  
 Steve & Jan Oliva  
 Dr. & Mrs. Gary Ostenson  
 Mr. Mark Palmer  
 Peninsula Community Foundation  
 Dr. & Mrs. Harold M. Phillips  
 Mr. & Mrs. E. Barry Post  
 Barrie Herbold & David Powell  
 Geraldine Kent Pulito  
 Mr. & Mrs. Ellsworth D. Purdy  
 Charles & Noreen Reali  
 Mr. Charles Reynolds  
 Harvey & Miriam Rogers  
 Mr. & Dr. Robert Romanski  
 Nancy S. Rosenfeld  
 Hiroshi & Masami Saitoh  
 Mr. & Mrs. David A. Solberg  
 Mr. & Mrs. John Spring  
 Mr. & Mrs. Craig P. Stuvland  
 Masayoshi & Kazuko Suzuki  
 Beth Mason & Greg Schweigert  
 Amy & Emanuel Tanne  
 Ned & Anne Thanhouser  
 Dr. & Mrs. Thomas L. Thornton  
 Larry Wade

Morris R. Westlund  
 Rebecca & Allen Wirfs-Brock  
 Mr. & Mrs. Woodrow Wittmayer  
 Mr. & Mrs. Mark Workman  
 Mr. & Mrs. Norman A. Workman  
 Douglas G. Wysham  
 Mr. & Mrs. Sadao Yonai  
 Mr. & Mrs. William F. Zobrist, Jr.

## *Founder's Club*

*Unrestricted gifts of \$125 to \$249*

ANONYMOUS  
 Mr. Charles Ahlers  
 Mr. & Mrs. Elmer Alsmeyer  
 Gorjean Armen & Neal Van Horn  
 Mr. & Mrs. Masao Asakura  
 Ms. Gail Auguston-Koppen  
 Jamie & Craig Austin  
 Steve & Sandy Baker  
 Mary E. Bechen  
 Ms. Joan Becker  
 Dr. & Mrs. Kenneth Bennington  
 Barbara Needham Berglund  
 Mrs. Anita Cadonau Birkland  
 Mr. & Mrs. Steven J. Bitte  
 Sally & Jame Bjerklie  
 Mr. Allyn Brown  
 Budd G. Burnie  
 Mr. & Mrs. David Bussman  
 Mr. & Mrs. Joseph Cade  
 Maxine Carlstedt  
 Mr. & Mrs. Michael Carrier  
 Charyl Cathey  
 Helen McKeever Chastain  
 Thomas Chou  
 John & Mary Coletti  
 Mrs. Alexandra Dussin Cook  
 Joan K. Lucas Craig  
 Don & Lilian Crawford  
 Janet Mann Crawford  
 Mrs. John Crist  
 Laurie & Gary Crossman  
 Crown Jewelers  
 Dr. Alan W. Dappen  
 Janet Maurer & William Davenport  
 The de Bruins  
 Merry & Harry Demarest  
 Victoria J. DeVito & Craig L. Fuller  
 David & Christine Dew  
 Timothy A. Dooley, M.D.  
 Jane Logan Edwards  
 Scott E. Egan  
 Mr. & Mrs. Jerry R. Fish  
 Dr. & Mrs. Bruce Fiske  
 Mr. & Mrs. Woody Froom  
 Judge Helen J. Frye  
 Mrs. Yasuko T. Fukano  
 Drs. Michael & Barbara Gaines  
 Robert & Jacquilin Gawlik  
 Neil W. Gebbie  
 Mr. & Mrs. Gerry Gerard  
 Diana Barnard Gray  
 Mr. & Mrs. David P. Hamilton  
 Patricia B. Hamilton  
 Mrs. U.S. Harkson  
 Brian & Janice Harwood  
 Betty Lou Hatcher  
 Amy & Emanuel Tanne  
 Lenore "Billie" Reynolds Hayes  
 Dr. & Mrs. Arthur D. Hayward  
 Tom & Judi Henkle

Dr. & Mrs. Christopher D. Hikes  
 Charmian Kolar Hilleary  
 Barbara J. Hinman  
 Jane Hinsdale  
 Mr. & Mrs. Bruce Holliday  
 Margaret M. Holmgren  
 Dr. & Mrs. Toru Ike  
 Mr. & Mrs. Gordon R. Janney  
 Jewett, Barton, Leavy & Kern, Inc.  
 Dr. & Mrs. Lionel Johnson  
 Mr. & Mrs. Wesley E. Johnson  
 Mr. & Mrs. Alex Johnson, Jr.  
 Mr. & Mrs. Reilly Jones  
 Mrs. Lillian Spahn Kelly  
 Mr. & Mrs. Kevin F. Kerstiens  
 Mrs. Lenore Lavanture Klink  
 Ms. Susan Krohn  
 Mr. & Mrs. Walter Krumbholz, Jr.  
 Mr. & Mrs. Hoichi Kurisu  
 Mr. R. G. Lafollette  
 Fred & Mollie Lamoureux  
 Allan Lehman & E. von Behren  
 Elizabeth Lilley  
 Ms. Sharon Little  
 Cathi Lutz  
 Mr. & Mrs. Gregory Malley  
 Britt & Henrik Martens  
 Mrs. Martha Randall Mason  
 Patricia J. Maulbetsch  
 Charles & Sara Mauritz  
 Lady McDonald  
 Cozette Scott McGuire  
 Mrs. Marian Denton McKean  
 Dr. & Mrs. Martin Mehr  
 Adrienne Mikeworth-West  
 Susan Dodge Moore  
 Mrs. Mary H. Naab  
 Mr. Kenneth B. Noack, Jr.  
 Sara-Jane Henderson Norwood  
 Joseph E. & Zuzana Opsahl  
 Betty Barr Patrick  
 Mark & Rosanne Perry  
 Patricia Pearson Peterson  
 Mr. & Mrs. Daniel T. Phillips  
 Mr. & Mrs. Frank Powers  
 Colleen G. Acres & William A. Rabiega

Gene & Susan Raleigh  
 Daniel A. & Beverly L. Risser  
 Mr. & Mrs. Joe Robertson  
 Mr. & Mrs. Edward Rubovits  
 Mr. & Mrs. Ken W. Sakai  
 Mr. & Mrs. William Y. Sakai  
 Drs. John & Trudy Samples  
 Richard & Mary Sapp  
 Frank W. & Betty R. Scheible  
 Mary & Jack Schunk  
 Dr. & Mrs. Jack S. Semura  
 David & Noralee Sherwood  
 Joel & Sandra Shilling  
 Gerald H. Siemens  
 Brenda Sloan  
 Jeffrey Smith  
 Mr. & Mrs. Paul Smith  
 Dr. & Mrs. Paul J. Snyder  
 Mr. & Mrs. Jay South  
 Mr. Marshall Spencer  
 Mr. & Mrs. Robert Spivack  
 Mr. & Mrs. Douglas H. Stearns  
 Mr. & Mrs. Peter W. Stevens  
 Mrs. Sally Reed Stout  
 Pam Vohnson & David Streight  
 Mr. Keith Sunderman  
 Mrs. Palmer Swanson  
 Mrs. Stephen E. Thompson  
 Dr. Matti & Najla Totonchy  
 Doris Lincoln Trepp  
 Mr. & Mrs. Peter Turney  
 Mr. & Mrs. Tom M. Van Houten  
 Dale & Patricia Walwood  
 Mr. & Mrs. J. Davis Walker  
 Dr. & Mrs. Edward E. Ward  
 Mrs. Alice Freeze Warner  
 Mr. & Mrs. Roger Warren  
 Dr. & Mrs. Richard G. Weleber  
 M. Jenelyn Gaston Wessler  
 Mr. & Mrs. Roy West  
 Thomas Willing & Mary Burgess  
 Mr. & Mrs. George Winchell  
 David K. Winchester, M.D.  
 Mr. Richard Winningstad  
 Jeffrey K. Wolfe, M.D.  
 John L. Zenor

# THE ANNUAL FUND

## TRUSTEES

The OES Board of Trustees give to the School in so many ways: time, energy, leadership and resources. We thank them for their dedicated support and guidance. In addition to wide-spread support of all OES programs, the following Trustees made unrestricted gifts to the Annual Fund.

Mr. Peter F. Bechen  
 Dr. Edgar Clark  
 The Very Rev. Roy Coulter  
 Mrs. Frank Dorscheimer  
 Mr. Sho Dozono  
 Mr. Norman Frink  
 Dr. Barbara Gaines  
 Mr. Sean Gilronan  
 Mrs. Ginger Harrison  
 Mrs. Betty Hedberg  
 Mrs. Barbara Herbold  
 Mrs. Cinda Hoffman  
 Ms. Betsy Johnson  
 The Rt. Rev. Robert L. Ladehoff  
 Mr. Henry G. Laun  
 Mrs. Eleanor Milne  
 Mrs. Dorothea Pinch  
 Mr. David Pratt  
 Mrs. Lenita Scheetz  
 Mr. Michael C. Scheetz  
 Mr. Paul R. Schlesinger  
 Mrs. Kay Sotka  
 Mr. Leigh Stephenson  
 Mr. Peter W. Stevens  
 Mr. Dale Stewart  
 Mrs. Carole J. Thomas

*"Being an OES Development volunteer has been a personally rewarding and satisfying experience. I've worked with many wonderful, interesting people, and I feel very positive about OES because of the experiences that Brinton and Matt had there. It is nice to associate with so many people who feel the same and support OES so generously."*

— Ed Clark,  
 Development Chair



## ALUMNI

*Alumni Chairs:  
 Peggy Newhall '36, JC '38  
 and Mark Workman '69*

### St. Helens Hall

**1919** 50.0%  
 Ella Deering Nye

**1920** 66.7%  
 Doris H. Harkson  
 Suzanne Caswell Honeyman  
 Marian Jenkins  
 Ruth Jenkins

**1922** 37.5%  
 Eleanor Holman Burkitt  
 Frances Cornell Dahl  
 Marion Farrell Kingery

**1924** 16.7%  
 Mildred Vaughan Draper

**1925** 8.3%  
 Dorothy Statter DeFrance

**1926** 20.0%  
 Helen Betsy Abbott  
 in memory of Nancy S. Chipman  
 Estate of Nancy S. Chipman  
 Margaret Hall Newbegin

**1928** 15.4%  
 Elizabeth Johnson Damuth  
 Marjory Holman Day

**1929** 28.6%  
 Madelon Brodie  
 Helen Curtis Hyde

**1930** 47.4%  
 Elizabeth O'Reilly Barstow  
 Frances Stevens Gilley  
 Muriel Gabriel Heltzel  
 Jane Fales Hinsdale  
 Marian Denton McKean  
 Lela Blanche Coe Meyer  
 Sally Reed Stout  
 Helen Malarkey Thompson  
 Margaret Reeves Yick

**1931** 55.6%  
 Peggy Cullers Boone  
 Katherine Gilbert Campbell  
 Helen Stratton Felker  
 Rhoda Holman Statter  
 Hannasue Watts Steel

**1932** 38.9%  
 Shirley Fulton Coan  
 Evelyn Zehntbauer Lundgren  
 Jane Campbell Munly  
 Sara-Jane Henderson Norwood  
 Saville Riley Richardson  
 Mary Louise Kendall Skilling  
 Helen Monner Ward

**1933** 30.8%  
 Betty Barr Patrick  
 Margaret Ingram Shute  
 Frances Warren  
 Bettybell Tubbs Watzek

**1934** 41.7%  
 Lenore "Billie" Reynolds Hayes  
 Elizabeth Watkins Jorgensen  
 Sally MacBride  
 Elizabeth Pownall Swindells  
 Ruth Simmonds Tunturi

**1935** 50.0%  
 Jane Mount Ammerman  
 Lillian Brooke Austin  
 Frances Corle Baynham  
 Anita Cadonau Birkland  
 Margaret Mann Holmgren  
 Geraldine Hanny Sargent  
 Mary Alice Enos Saul

**1936** 44.4%  
 Charlotte Lee Doty  
 Margaret Smith Newhall  
 Betty Lou Roberts  
 Alice Freeze Warner

**1937** 36.4%  
 Jean Groves Bullwinkle  
 in memory of Cathryn Collins Roberts  
 Janet Mann Crawford  
 Cavell Abbott Frey  
 Nancy Stolte Rosentfeld

**1938** 11.8%  
 June Streibig Mortensen  
 Wilda Jerman Plympton

**1939** 36.8%  
 Betty Kirk Duncan  
 Alice Gregory Frazer  
 Sue Lake Howell  
 Nancy Browning Knoles  
 Melissa Loeding Martinson  
 Mary Louise Vincent Powell  
 Jean Maguire Smith

**1940** 20.0%  
 Georgia Houseman Coble  
 Marjorie Besson Fintz  
 Alice Moore Iltz  
 Cozette Scott McGuire

# THE ANNUAL FUND

## 1941 37.5%

Sally Tyler Brustad  
 Agnes Hansen Graves  
 Katherine Robinson Henshaw  
 M. Jenelyn Gaston Wessler  
 Constance M. Wilson  
 Rhoda Thurm Zobrist

## 1942 13.3%

Margaret Saari Dether  
 Charmian Kolar Hilleary

## 1943 15.4%

Jean Ainslie Kalahan  
 Alta June Myles Kennedy

## 1944 43.8%

Betsy Parker Belles  
 Anne Stewart Bentz  
 Joan K. Lucas Craig  
 Patricia Bendshadler Hamilton  
 Alice Heyl  
 Gloria Jokstad Jones  
 Nadine Honeyman Wilhelm

## 1945 30.0%

Patricia Walker Ackerman  
 Mary Snellstrom Balzhiser  
 Chiane Gerow Kathrens  
 Molly Clair Krausse  
 Susan Teague Lake  
 Patricia Pearson Peterson

## 1946 25.0%

Carla Rebagliati Black  
 Donna Dustin Courtney  
 Dorothy Hobson Graham  
 Barbara Henton Marontate

8.7%

## 1947

Nancy Rogers Bates  
 Leslie A. McVey

## 1948 27.8%

Shirley J. Barton  
 Priscilla Ann Adams Davis  
 Mary Orr Edson  
 Delight Kolar Leonard  
 Nancy Newland Morrisette

## 1949 41.2%

Janet Banks  
 Gloria Spencer Crowson  
 Susan J. Dudley  
 Bonnie Dunbar Hahn  
 Barbara J. Hinman  
 Mary Lou Rose Johnson  
 Betty Charlton Labadie

## 1950 38.5%

Nancy Sigurdson Austin  
 Sue Rawlinson Bocci  
 Carolyn Averill Doughton  
 Nancy Collins Rivenburgh  
 Diane Dawson Schulz

## 1951 25.0%

Ann Butterfield Hayes  
 Caroline Kuhn Meehan  
 June Dunbar Phillips  
 Floy vonGroenewald Senior

## 1952 6.7%

Garland Sorenson Lewis

## 1953 16.7%

Barbara Greene Phillips  
 Cynthia Coats Railton

## 1954 12.5%

Diana Barnard Gray

## 1955 54.5%

Patricia Kelley  
 Marietta Lind Kuykendall  
 Sylvia Rawlinson Mathews  
 Jemison Cain Spriggs  
 Karen Kerr Stephenson  
 Virginia Euwer Wolff

## 1956 27.3%

Karen Barner Anderson  
 Nancy Mooers Holman  
 Susan Dodge Moore

## 1957 30.0%

Norma Fisher Atkins  
 Karen Kettenring Goodman  
 Margaret Keiter Lopic



## 1959 14.3%

Sally Bowe Koppel  
 Jill Neubert Quick

## 1960 22.2%

Carol Pope Carney  
 Virginia Schaihl Gavurnik  
 Judy Grant Kauffman  
 Patricia Clarke Kempf

## 1961 20.0%

Sally Bjerklie  
 Mary Jane Dobson  
 Diana Fanning Haslund

## 1962 18.8%

Janice Parker Barnette  
 Judy Cooper  
 Vicki Webster

## 1963 25.0%

Judy Hill Becker  
 Alice May Martin Larsen  
 Vera Farinas Long  
 Nan Butler Perrott  
 Carol Lundy Wolfe

## 1964 21.4%

M. Kathleen Bafetti  
 Becky Weissert Jones  
 Janice Swanson

## 1965 50.0%

Anonymous  
 Susan Carr  
 Nancy Bishop Dietrich  
 Christina Autzen Grady  
 Mary Lampson Gros  
 Ellen Wheeler Guest  
 Heidi Bildsoe Hansen  
 Cinda Taylor Hoffman  
 Helen Lenise Kilbourne  
 Natalie Giustina Newlove  
 Janet Pennington Peterson  
 Heidi McIsaac Shuford

## 1966 37.9%

Sheila Maley Bates  
 Kimberly Moyer Beck  
 Nancy Benson  
 Diana Beebe Buchanan  
 Sharon Gallentine Douglas  
 Jayne Lilles Hill  
 Katherine Karalotias  
 Antonette Lehman  
 Elizabeth Marsh  
 Carolyn Morris Matney  
 Margaret Howard Singleton

## 1967 31.8%

Christine L. Bieber  
 Lee Diane Collins-Vest  
 Carolyn Gardner  
 Mar'lynn Lagozzino  
 Jane Adams Patterson  
 Rebecca Reynolds  
 Mary Lou Ryan

## 1968 21.7%

Leslie Stevenson Campbell  
 Niki Davis El-Krewi  
 Linda Thomas Hendrickson  
 Betty Rennett Hooton  
 Marcy Drain Jordan

## 1969 29.4%

Paige Plummer Hasson  
 Elizabeth Johnson  
 Sharon Little  
 Marybeth Merwin Mitchell  
 Sarah Stevenson

## 1970 23.5%

Nadine Christenson Carlile  
 Alexandra Dussin Cook  
 Ann Parr  
 Joanne Yocum Powell

## 1971 20.0%

Ann Foland  
 Susan L. Hillesland  
 Kathryn R. Janssen

## 1972 22.7%

Sallie Cheatham Healey  
 Mary Critchlow Jacob  
 Joni Ueland Johnson  
 Carrie K. Sammons  
 Franzi Ridgway Thompson

# THE ANNUAL FUND

## St. Helens Hall Junior College

### 1934 50.0%

Irma Rees  
Flora Fetz Roholt  
Margaret Reeves Yick

### 1935 25.0%

Maxine Van Patten Dickey  
Mary Janelle Jacques  
Lenore Lavanture Klink  
Elizabeth Little  
Virginia E. Olsen  
Dorothea Bargelt Smith  
Virginia Dickey Stoddard

### 1936 52.6%

Janet Cutler Buchanan  
Jane Logan Edwards  
Virginia Pierson Imhof  
Mary Carol Zander Isaacs  
Jean Langley  
Phyllis Payne Metzger  
Phoebe J. Catton Misner  
Elean Hoover Nassir  
Patricia Kellogg Roberts  
Doris Lincoln Trepp

### 1937 37.9%

Irene Hegeberg Birnie  
Katherine Cannon Christerson  
Margaret Hinkle Davidson  
Mary Alice Burnham Franzwa  
Josephine McPherson Hicks  
Lois May Ingala  
Eva West Jelmsberg  
Doris Cahill Litchford  
Rosemary Hintzen Lloyd  
Margaret Mullen Norris  
Mary Sutherland Vissiere

### 1938 37.9%

Norma Wills Clark  
Anita Cadonau Birkland  
Charlotte Lee Doty  
Betty Lou Phelps Dunlop  
Marjorie Lewis Hammond  
Jeannette Hoss  
Darlene Harris Jones  
Greta Matzen Morley  
Margaret Smith Newhall  
Pearl Buckler Steele  
Alice Freeze Warner

### 1939 22.2%

Fredericka Cutter Becker  
Yasuko Tsuboi Fukano  
Virgene Wade Gillett  
Jane Merriman Gilpin  
Dorothy L. Heider  
Anne Jones Taggard

### 1940 47.1%

Patricia M. Dowling  
Lillian Spahn Kelly  
Martha Randall Mason  
Vivian McNamee  
Frances Robertson Miescher  
Eleanor Staehli Milne  
Luella Adels Pennings  
Esther Lenon Setterberg

### 1941 43.8%

Mary Bedwell Bothwell  
Audra Haffenden Braun  
Mary Butler Bright  
Jane Deacon Curry  
Helen Robertson Edwards  
Elizabeth Franklin  
Maxine Chu Leo  
Ruth Page Lotz  
Patricia Simmons Maulbetsch  
Muriel Eddy McBee  
Dorothy Lilly Nestelle  
Helen Richards Schater  
Margaret V. Wind  
Doris Stein Young

### 1942 33.3%

Dale Thompson Boon  
Maryanna Eckman Hatch  
Nancy Hallock Jones  
Kimiko Tanida Kanaya  
Mary Sullivan Karstedt  
Doris Balzimer Perry

### 1943 30.0%

Elia Leibold Bubenik  
Dorothea Thomas Guynup  
Rhoda Thurm Zobrist

### 1944 9.1%

Helen Stoll

### 1945 16.7%

June Richards Enevoldsen  
Beverly Triplett Hawks

### 1946 20.0%

Georgeanna Spencer

### 1947 11.5%

Barbara Needham Berglind  
Catherine Owens George  
Mazie Zakoji Sakai

### 1948 25.0%

Patricia Kendall Apperson  
Helen McKeever Chastain  
Doris Carter Keller



## Bishop Dagwell Hall

### 1967 46.2%

Anonymous  
Jim Augsburger  
Denham B. Cratton II

### 1968 22.2%

Dan T. Driscoll  
Bernard J. Westlund

### 1969 42.9%

Walter Daggatt  
Harry J. O'Donnell Jr.  
Mark Palmer  
Charles Reynolds  
Richard N. Westlund  
Mark Workman

### 1970 38.5%

Scott Bogue  
Alan W. Dappen  
Norman Frink  
Ken W. Sakai  
Paul R. Schlesinger

### 1971 8.3%

Marshall Spencer

### 1972 33.3%

Andrew Dappen  
Fred Ellis  
Robert Bruce Jackson  
David E. Marble  
Douglas G. Wysham

## OES Alumni

### 1973 52.6%

Lacey Love Cantu  
Laurie A. Caswell  
Martha Bullwinkle Dorrell  
Drew Erensel  
Estate of Jonathan Glenn  
Jeff Honeyman  
Sally James  
Kenneth B. Noack, Jr.  
John O. Sanford  
Carole Tuttle Traweek

*"I became involved in the Alumni Association when I moved back to Portland from California. Making all the new friends and renewing many old friendships has been very rewarding. I feel satisfied knowing that I have contributed, in some small way, to help the School that I enjoyed so much when I went there, and where my granddaughter enjoyed her high school years."*

Peggy Newhall

SHH 36, 10 '38.

Alumnae i Co-Chan

# THE ANNUAL FUND

## 1974

38.8%

Holly Parker Ande  
John W. Coffey  
Tim Curren  
Brent Erensel  
Peter Grimes  
Rebecca A. Hoff  
Elizabeth Lilley  
Joan Bokemeier Lucero  
Miles Miller  
Max M. Miller, Jr.  
Julie Lucas Sanford  
Osa M.A. Schultz  
Kip Walker  
James W. Weber

## 1975

56.6%

Jean Duffie Benedict  
Susan Brustad Christensen  
Bonnie Crowley  
Lynn Seton Davidson  
Lynea George Davis  
John H. Egan  
Lisa Johnson Frey  
Barbara Bolton Hopewell  
Chris McMurtry  
Ellen Montague  
Joan Ritchie  
Jane Honeyman Rude  
Anita A. Rae Walton  
Sandra Sheppard Warner  
Morris R. Westlund  
Kenneth R. Wilkinson  
Nancy Woodworth Young

## 1976

20.8%

PerriAnn Combs-Taber  
James R. Maher  
Laurie Marble  
Kathy Allen Ormseth  
Edmund Stevens

## 1977

44.8%

Meg Finch Bishop  
Jeff Cox  
Scott E. Egan  
Becky Grimes Gilmore  
Cathy Goldsmith  
Melanie Kay Jordan  
Eric Kobbe  
Randy Rae  
Tracy delValle Reimers  
Sarah Rose  
Jennifer Seton  
Robert T. Smith  
Susanna Dant Soper

## 1978

28.0%

Geoff Chew  
Daniel Corona  
Douglas Kezeor  
Sara Kinersly  
Susan Krohn  
Lee Anne Rennick  
Michael E. Sullivan

## 1979

31.0%

Tom Bice  
Maggie Groening  
Norma Dulin Gurovich  
Robert S. Holden  
Kevin Kraft  
Susan Eckhardt Purcell  
R.E. Clenton Richardson  
Katharine Sammons  
Jennifer Brock Thomas

## 1980

23.1%

Liz Cohn  
Carrie Loar Cool  
Paul "Barry" Daigle  
Russell Janney  
Margo Lalich  
Brenda Graves Wiens

## 1981

25.0%

Drue Ferguson  
Michelle Fromm  
Eric Hart  
Sean Kuni  
Benjamin Sawyer  
Kathleen Douglas Van Every

## 1982

14.3%

Laura Neidhart Furgurson  
Regan Leon  
Adrienne Mikeworth-West

## 1983

6.2%

Jon Grodem

## 1984

22.7%

Paul Alexander  
Joe Harris  
Thomas D. Hayes Jr.  
Jackson B. McCann, Jr.  
Pardis Mehrassa

## 1985

4.5%

James Isaak

## 1986

2.9%

Deborah Rath Kennison

## 1987

2.4%

Michael Sandoz

## 1988

7.0%

Courtney Boatsman  
Meredith Boatsman  
Brinton Clark

## 1989

2.0%

Daniela Brod

## 1990

2.4%

Matthew Clark

## CURRENT PARENTS

### Parent Chairs:

*Jim and Nancy Dunn*

### ANONYMOUS

Mr. & Mrs. Charles A. Adams  
Mr. Charles Ahlers  
Dr. & Mrs. Aftab Ahmad  
Dr. & Mrs. Riad Ajami  
Mr. & Mrs. Richard Alexander  
Mr. & Mrs. Robert Ames  
The Rev. & Mrs. Raymond Anderson  
Mr. & Mrs. Norihide Anpo  
Mr. Hal Arbogast  
Ms. Judith Arbogast  
Gorjean Armen & Neal Van Horn  
Ms. Pirkko Arveli  
Jeannie & John Atkins  
Mr. & Mrs. Robert S. Auguston, Jr.  
Ms. Gail Auguston-Koppen  
Jamie & Craig Austin  
Drs. Ezra & Farhat Azhar  
Steve & Sandy Baker  
Dr. & Mrs. David Balmer  
Richard & Cindy Bambam  
Dr. & Mrs. Ken H. Barker  
Mr. Robert Bateman  
Mr. Bradley Baugher  
Mr. & Mrs. Ike Bay  
Mr. & Mrs. Peter F. Bechen  
Ms. Joan Becker  
Mr. & Dr. Daniel Bedell  
Dr. & Mrs. Hans Behrens  
Mr. & Mrs. Charles L. Bell  
Dr. & Mrs. Kenneth Bennington  
Dr. Gerard Berardi & Leslie Zega  
William C. & Gena R. Berg  
John Berman  
Dr. & Mrs. John Berwind  
Mr. & Mrs. James Bickford  
Mr. & Mrs. Steven J. Bitte  
Dorothy Baker  
Mr. & Mrs. Joerg Bleeck  
Mr. & Mrs. Timothy Bliss  
Diane & Jeffrey Boly  
William Den Beste & Wyn Bowler  
Kay & Marty Brantley  
Mr. & Mrs. Jean D. Brault  
Mr. & Mrs. William M. Brod  
Paul A. & Debra Brodie  
Mr. Allyn Brown  
Ms. E. Jeannette Brown  
Mr. & Mrs. Larry Brown  
Mr. & Mrs. Val Brown  
Drs. Moir & Sarojini Budden  
Mr. & Mrs. Paul A. Buescher  
Ms. Jacquelyn Burkart  
David & Ellen Burns  
Mr. & Mrs. David Bussman  
Mr. & Mrs. Joseph Cade  
Ms. Sandra Cade  
Jonathan & Ellen Carder  
Mr. & Mrs. Michael Carrier  
Mrs. Linda A. Carroll  
Terry L. Carroll  
Ms. Claire Cavanaugh  
Ding & Patsy Chan  
Richard & Nancy Chapman  
Inder & Sushma Chawla  
Dr. & Mrs. John R. Chessar  
Thomas Chou

*"Volunteering our time and resources to the OES Annual Fund is one way we can give something back to this wonderful School. It is gratifying to know we're doing something to help keep the School financially strong."*

*— Jim & Nancy Dunn,  
Current Parent Chairs*

# THE ANNUAL FUND

D. Corbet Clark  
 Drs. Charles Colip & Elizabeth Tindall  
 Mr. & Mrs. Calvin Collins  
 Dennis & Gayle Collins  
 Don & Lilian Crawford  
 Laurie & Gary Crossman  
 Mr. & Mrs. Bryan M. Cullivan  
 Dr. & Mrs. Aloys J. Daack  
 Bill & Wendy Darden  
 Janet Maurer & William Davenport  
 Dr. & Mrs. Michael E. Davis  
 Mr. & Mrs. Timothy W. Davis  
 The de Bruins  
 Victoria J. DeVito & Craig L. Fuller  
 David & Christine Dew  
 Mrs. Kuniko deWeese  
 Ms. Jeannette Dezsofi  
 Ms. Lori Diaz  
 Doris & Rod Diman  
 Mr. & Mrs. John Dixon  
 Mr. & Mrs. Gerald Doble  
 Mr. & Mrs. Michael F. Donnelly  
 Timothy A. Dooley, M.D.  
 Karen Downs  
 Jack & Laura Doyle  
 Mr. & Mrs. Jim Dunn  
 Mr. & Mrs. Peter Ebert  
 Kathryn A. Engholm  
 Martha & Richard England  
 Jay & Linda Enloe  
 Mr. & Mrs. Grant Farr  
 Mr. & Mrs. William S. Findlay  
 Mr. & Mrs. Jerry R. Fish  
 Chas & Gail Fleenor  
 Carol F. Floten  
 H. Storm Floten  
 Ms. Sarah M. Foley  
 Mr. & Mrs. Mark Foster  
 Mr. & Mrs. Ted F. Freres  
 Mr. & Mrs. Rene E. Fritz, Jr.  
 Dr. & Mrs. Donald W. Froom  
 Judge Helen J. Frye  
 Dr. & Mrs. Helmut Frye  
 Dr. & Mrs. Theodore Fujioka  
 Mr. & Mrs. Robert S. Fuller  
 James B. & Barbara L. Gaffney  
 Robert & Jacquilin Gawlik  
 Gail Gearin  
 Mr. & Mrs. Richard Geary  
 Kristine M. Gebbie  
 Neil W. Gebbie  
 Mr. & Mrs. Gerry Gerard  
 Mr. & Mrs. Kenneth A. Gilbert  
 Mr. & Mrs. Sean Gilronan  
 Mr. & Mrs. Rodger M. Glos  
 Michael & Sidney Gold  
 Mr. & Mrs. Allan L. Goodman  
 Mr. & Mrs. Richard Graves  
 Mr. & Mrs. Clarence Greenwood  
 Mr. & Mrs. Robert S. Gregg  
 Mr. & Mrs. Stephen A. Gregg  
 Mrs. Gail Bitar Grodem  
 Glen & Tina Grodem  
 Mr. & Mrs. Bruce E. Hagensen  
 Dr. & Mrs. Roger W. Hallin  
 Mr. & Mrs. David P. Hamilton  
 Ms. Joan Harmony  
 Mr. & Mrs. Ronald Harriman  
 Mr. & Mrs. Howard Harris  
 Mr. & Mrs. Stephen Hartgen  
 Brian & Janice Harwood  
 Kent & Alexa Haskard

Mr. & Mrs. Sanford Haskins  
 Mr. & Mrs. Daniel Hatton  
 Dr. & Mrs. Arthur D. Hayward  
 Tom & Liz Head  
 Mr. & Mrs. Ben Hedlund  
 Tom & Judi Henkle  
 Jerry Herman  
 Mr. & Mrs. Henry H. Hewitt  
 Jim & Jan Hibbard  
 Dr. & Mrs. Christopher D. Hikes  
 Ms. Cheryl Hiller  
 Mr. & Mrs. Peter Hoffman  
 Mr. & Mrs. Bruce Holliday  
 Mrs. Judith Holmes  
 Mr. Michael Holmes  
 Stanley & Wanda Hopkins  
 Mr. Kent Houser  
 Mr. & Mrs. Edwin Hunt  
 Mr. & Mrs. Hoi Huynh  
 Dr. & Mrs. Toru Ike  
 Mr. William Impey  
 Dr. & Mrs. Frederic Y. W. Ing  
 Mr. & Mrs. Alan James  
 Mr. & Mrs. Patrick Jensen  
 Mr. & Mrs. Lamar Johnson  
 Dr. & Mrs. Lionel Johnson  
 Ms. Rebekah E. Johnson  
 Mr. & Mrs. Alex Johnson, Jr.  
 Mr. & Mrs. Craig & Barbara Johnston  
 Mr. & Mrs. Reilly Jones  
 Dr. & Mrs. Michael Kaemfl  
 Mr. & Mrs. John D. Karamanos III  
 Mr. & Mrs. Morton Kelsey  
 Dr. & Mrs. Brian Kendregan  
 Mr. & Mrs. Kevin F. Kerstiens  
 Mr. & Mrs. William J. Keys  
 Dr. & Mrs. Daniel Kim  
 Drs. Robert & Mary Kay King  
 Mr. & Mrs. Wayne Kingsley  
 Mr. & Mrs. James D. Kirkmire  
 Mr. & Mrs. Klaus Kleber  
 Drs. David & Janice Knox  
 Mr. & Mrs. David Kobos  
 Mr. & Mrs. Paul T. Kollar  
 Curtis R. & Mariann Koop  
 Mr. & Mrs. Bernard Kramer  
 Mr. & Mrs. Robert Kreinberg  
 Mr. & Dr. Louise & Barry Kremkau  
 Dr. & Mrs. Walter R. Krieger  
 Drs. G.T. & S. Krishnamurthy  
 Mr. & Mrs. Walter Krumbholz, Jr.  
 Dr. & Mrs. Robert J. Laird  
 Dr. & Mrs. William Lamb  
 Fred & Mollie Lamoureux  
 Mrs. Abby Landon  
 Herbert Landon  
 Mr. & Mrs. Terry L. Lane  
 Mr. & Mrs. Granville Lee  
 Ms. Mary J. Lee  
 Mr. & Mrs. Jim Legler  
 Allan Lehman & Evon Behren  
 Mr. & Mrs. Ronald Lehr  
 Mr. & Mrs. Tom & Dana Lewis  
 Wesley & Julie Lewis  
 Larry & Cathy Lindquist  
 Mr. & Mrs. Tom Lipman  
 Gilbert & Jacqueline Lipshutz  
 Warren Hirsch & Kate Loggan  
 David & Jacquie Lukens  
 Mr. & Mrs. Kim Lundgren  
 Cathi Lutz  
 Dr. & Mrs. Peter B. Lyon

Mr. & Mrs. Frank MacMurray  
 Mr. & Mrs. Gregory Malley  
 Mr. & Mrs. Robert Marshall  
 Britt & Henrik Martens  
 Dr. & Mrs. Robert Matheson  
 Atsuko Matsuyama & Izuru Inaue  
 Charles & Sara Mauritz  
 Ms. Patricia McCarthy  
 John & Pauly McClelland  
 Mr. & Mrs. Thomas E. McClung  
 Mike & Ingrid McCoy  
 Sarah R. McNary  
 Mrs. Diane Meade  
 Dr. & Mrs. Martin Mehr  
 David Menely  
 Mr. & Mrs. Morgan J. Mercer  
 Mr. & Mrs. Phil Meurer  
 Mr. & Mrs. Dan L. Meyer  
 W. D. Michtom  
 Mr. & Mrs. Russell D. Mickiewicz  
 Drs. Juan & Monica Millan  
 Mr. & Mrs. Alan E. Miller  
 Mr. & Mrs. Ted Miller  
 Matthew Miller & Kathleen Dodds  
 Michael & Dana Morasch  
 Dr. & Mrs. Christopher Morgan  
 Greg & Diane Morgan  
 Mr. & Mrs. Hideto Moriyasu  
 The Moser Family  
 Edwin & Sharon Mueller  
 Fred & Gayle Nachtigal  
 Steve & Jan Oliva  
 Joseph E. & Zuzana Opsahl  
 Mr. & Mrs. Peter L. Osborne  
 Dr. & Mrs. Gary Ostenson  
 Mr. & Mrs. William Juh Ou  
 Ms. Lynne Parise  
 Mr. & Mrs. C. Paul Patsis  
 Mr. & Mrs. Raymond L. Pavitt  
 Mark & Rosanne Perry  
 Mr. & Mrs. Daniel T. Phillips  
 Dr. & Mrs. Harold M. Phillips  
 LouAnn Pickering  
 Christopher & Kelley Platt  
 Mr. Gary R. Pope  
 Anne & Sam Pope  
 Mr. & Mrs. E. Barry Post  
 Barrie Herbold & David Powell  
 Ms. Claudia K. Powers  
 Mr. & Mrs. Frank Powers  
 Mr. & Mrs. Truman O. Price  
 Geraldine Kent Pulito  
 Dr. & Mrs. Manohar Punja  
 Ms. Susan M. Quattrocchi  
 Colleen G. Acres & William A. Rabiega  
 Gene & Susan Raleigh  
 Charles & Noreen Reali  
 Mr. & Mrs. Jerry C. Reeves  
 Susan & Lawrence Rein  
 Mr. & Mrs. Robert Reuther, Jr.  
 Mr. Charles Reynolds  
 Daniel A. & Beverly L. Risser  
 Mr. & Mrs. Daniel Ritter  
 Drs. Joe & Margaret Robertson  
 Harvey & Miriam Rogers  
 Mr. & Mrs. David Rogoway  
 Mr. & Dr. Robert Romanski  
 Stephen Russell & E. Mulcahy-Russell  
 Richard & Lynne Sadler  
 Mr. A.R. Sadri  
 Hiroshi & Masami Sailoh  
 Mr. & Mrs. Ken W. Sakai

*"Part of our job as parents is to get involved. For us, being volunteers has been a great way to keep in touch with the School and to see what programs our children are benefitting from, first hand. It is an opportunity to meet and work with some fantastic people, and really make a difference."*

— Dennis & Patty  
 Winningstad,  
 Annual Fund Chairs

# THE ANNUAL FUND

Drs. John & Trudy Samples  
 Eric T. & Pamela B. Sankey  
 Richard & Mary Sapp  
 Mr. & Mrs. James Sassalos  
 Michael C. Scheetz  
 Dr. & Mrs. William Scheible  
 Mr. & Mrs. Peter Schmurr  
 Mary & Jack Schunk  
 Miles & Patsy Seeley  
 Dr. & Mrs. Jack S. Semura  
 David & Noralee Sherwood  
 Joel & Sandra Shilling  
 Ms. Mei Shum  
 Gerald H. Siemens  
 Mr. & Mrs. David T. Sigaloos  
 Geoff & Bonnie Simmonds  
 Ms. Brenda Sloan  
 Ms. Jean D. Smith  
 Jeffrey Smith  
 Mr. & Mrs. Paul Smith  
 Les Smith & Nadine Wooley  
 Dr. & Mrs. Paul J. Snyder  
 Mr. & Mrs. Richard N. Snyder  
 Mr. & Mrs. David A. Solberg  
 Mr. & Mrs. Chai Sophonpanich  
 Mr. & Mrs. Jay South  
 Ms. Adrienne Souther  
 Mr. & Mrs. Robert Spivack  
 Mr. & Mrs. John Spring  
 Bonnie & Roger Stanke  
 Mr. & Mrs. Douglas H. Stearns  
 Mr. & Mrs. Dale Stewart  
 Fred & Shelley Stoffer  
 Alan & Brigitte Stout  
 Pam Vohnson & David Streight  
 Faye Stumpf  
 Mr. & Mrs. Craig P. Stuvland  
 Mr. Keith Sunderman  
 Drs. Jeff & Kathleen Sunshine  
 Mr. Kurt Survance  
 Masayoshi & Kazuko Suzuki  
 Beth Mason & Greg Sweigert  
 Amy & Emanuel Tanne  
 Carolyn Tarlow & A. Himmelfarb  
 Mr. & Mrs. Stephen Taylor  
 Ms. Donna Tewksbury  
 Ned & Anne Thanouser  
 Dr. & Mrs. Stephen J. Thomas  
 Dr. & Mrs. Thomas L. Thornton  
 Drs. Mark & Helen Tochen  
 Dr. Matti & Najla Totonchy  
 Mr. & Mrs. Peter Turney  
 Mr. & Mrs. Tom M. Van Houten  
 Mr. & Mrs. Samuel Van Vactor  
 Pam Vohnson  
 Dale & Patricia Walhood  
 Dr. & Mrs. Edward E. Ward  
 Mr. & Mrs. Roger Warren  
 Dr. & Mrs. James L. Waskey  
 Dr. & Mrs. Richard G. Weleber  
 Mr. & Mrs. Douglas Whitmore  
 Paul H. & Diane F. Whitney  
 Mr. & Mrs. Jack G. Wilborn  
 Carl E. Wilcox  
 R. Michael Wilhite & Nancy Pole-Wilhite  
 Verna Bailey  
 Mr. & Mrs. W.R. Willard  
 Mark Williams  
 Mr. & Mrs. Rhone Williams  
 Thomas Willing & Mary Burgess  
 Thomas Wilson & Diedre Cain  
 Mr. & Mrs. George Winchell

David K. Winchester, M.D.  
 Mr. & Mrs. Robert K. Winger  
 Mr. & Mrs. Peter Winkler  
 Mr. & Mrs. Dennis S. Winningstad  
 Ms. Lynda Winningstad  
 Mr. Richard Winningstad  
 Rebecca & Allen Wirfs-Brock  
 Mr. & Mrs. Woodrow Wittmayer  
 Jeffrey K. Wolfe, M.D.  
 Ms. Nancy Wolfe  
 Mr. & Mrs. Robert Wood  
 Dr. & Mrs. John Woodward  
 Mr. & Mrs. Mark Workman  
 Barbara Wuest  
 Mr. & Mrs. Sadao Yonai  
 Mr. & Mrs. Tak Yoshida  
 Dr. & Mrs. Ian Young  
 Mike & Terri Zagone  
 Prof. J.K. & LaRae Zawodny  
 John L. Zenor  
 Mr. & Mrs. Ted Ziegler  
 Mr. & Mrs. Richard Zinzer  
 Karen & Don Zocchi

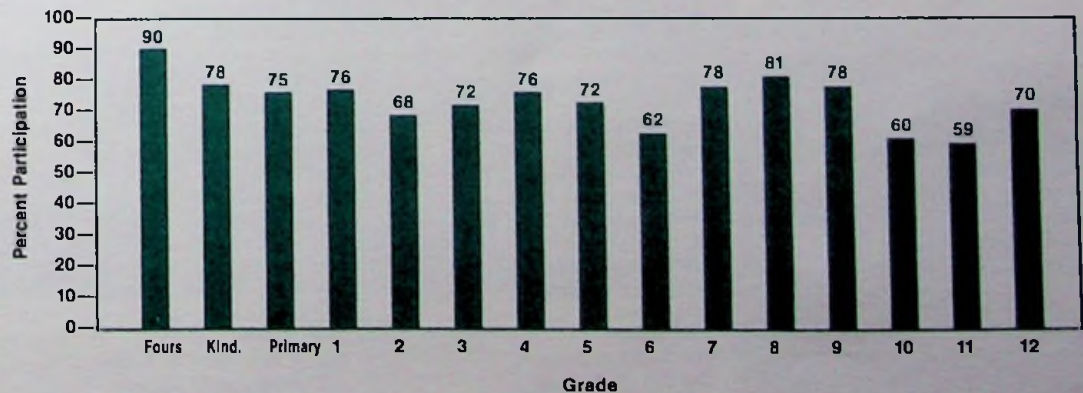
## ALUMNAE/I PARENTS

Anonymous  
 Dr. David Abbott  
 Mr. & Mrs. Masao Asakura  
 Jim & Mary Ann Asaph  
 Mrs. Anne Avery  
 Mrs. Barbara Bell  
 Mr. & Mrs. J. David Bennett  
 Lynn & Harley Boatsman  
 Max Bocek  
 Mr. & Mrs. Theodore H. Bokemeier  
 Mr. Jeff Briggs  
 Mr. & Mrs. Dave G. Bronson, Jr.  
 Mr. & Mrs. Daniel Brown  
 Mr. Harry Bruss  
 Dr. & Mrs. Walter R. Buhl

Budd G. Burnie  
 Mrs. Eleanor Cain  
 Ms. Virginia O. Carmichael  
 Mrs. Alyce Cheatham  
 Dr. & Mrs. Edgar Clark  
 Darrell Clukey & Sherrill Whittemore  
 John & Mary Coletti  
 Mrs. George W. Conklin  
 Mr. & Mrs. Joseph A. Connolly, Jr.  
 Marylyn & Russell Conrad  
 Rev. & Mrs. Donald A. Cornell  
 The Very Rev. & Mrs. Roy Coulter  
 Merry & Harry Demarest  
 Mrs. Nancy Doulis  
 Mr. & Mrs. Cecil Drinkward  
 Mr. & Mrs. C. R. Dullie  
 Ms. Nancy Duggan  
 Mrs. Susan Woodruff Emery  
 Dr. & Mrs. Bruce Fiske  
 Mr. & Mrs. Terry Fleming  
 James C.F. Foo  
 Drs. Michael & Barbara Gaines  
 H.L. & J.A. Grover  
 Mr. & Mrs. Steve Harder  
 Mr. & Mrs. Ken Harrison  
 Betty Lou Hatcher  
 Dr. & Mrs. T. David Hayes  
 Dr. Bob Helfernan  
 Michael & Erica Henderson  
 Jason & Maria Herven  
 Suvira Chaturvedi-Heyn & Michael Heyn  
 Mr. Walter Higgins, III  
 Ann & Jim Holtz  
 Mrs. Betty Rennett Hooton  
 Ms. L. Beth Hunter  
 Mr. & Mrs. Gordon R. Janney  
 Mrs. Jane S. Johnson  
 Mr. & Mrs. William Johnson  
 Mrs. Kimon N. Karafotias  
 Mrs. Elizabeth F. Kerr  
 Mr. & Mrs. Richard Kohnstamm  
 Mr. & Mrs. Wayne Kuni  
 Mr. & Mrs. Tsutomu Kyuzaki

Mr. & Mrs. Thomas M. Landye  
 Mr. & Mrs. Clemens Laufenberg  
 Mr. & Mrs. Henry G. Laun  
 Mr. & Mrs. Joseph S. Layman  
 Drs. Fernando & Dolores Leon  
 Mrs. Sylvia Rawlinson Mathews  
 Mr. & Mrs. John W. McAllister  
 Mr. & Mrs. Glen W. McBride  
 Mr. & Mrs. Curtis E. McCracken  
 Mrs. Louann Metzger  
 Mrs. Mary H. Naab  
 Mr. & Mrs. Donald Nelson  
 Ms. Gay Newton  
 Mr. J. R. Newton  
 Mr. & Mrs. Jonathan E. Nichols  
 The Rev. David Pace  
 Dr. & Mrs. Frank Parker  
 Mr. & Mrs. Ellsworth D. Purdy  
 Mr. Dale B. Ramerman  
 Mr. & Mrs. John W. Rath  
 Mr. & Mrs. Edward Rubovits  
 Mrs. Mazie Zakoji Sakai  
 Dr. & Mrs. Ivan L. Sandoz  
 Mrs. Joyce Schafer  
 Bonnie D. Scott  
 Mr. & Mrs. Michael B. Sherman  
 Clay R. Simon  
 Rev. & Mrs. Peter W. Sipple  
 Ann & George Ivan Smith  
 Mr. & Mrs. Edward E. Sotka  
 Mr. & Mrs. Robert Steinberg  
 Mr. & Mrs. Leigh Stephenson  
 Mr. & Mrs. Wm. T. C. Stevens  
 Dr. & Mrs. Frank C. Szvetecz  
 Dr. Mary L. Taylor  
 Mr. & Mrs. Henry Townend  
 Mr. & Mrs. Charles W. Tuttle Jr.  
 Mr. & Mrs. Edward Ulman  
 John & Kathy Utz  
 Mr. & Mrs. Donald H. Vetterlein  
 Larry Wade  
 Mr. & Mrs. J. Davis Walker  
 Mr. & Mrs. Thomas A. Wilson

## PARENT GIVING 1990-91 Annual Fund



# THE ANNUAL FUND



## GRANDPARENTS

### ANONYMOUS

Ms. Anne Hogan Ayers  
 Mary E. Bechen  
 Mr. & Mrs. William E. Bethards  
 Mrs. Pauline Brown  
 Mrs. John Crist  
 Mr. & Mrs. Cecil Drinkward  
 Mr. & Mrs. Woody Froom  
 Mr. & Mrs. Harold K. Gray, Sr.  
 Lenore "Billie" Reynolds Hayes  
 Mr. & Mrs. James Herbold  
 Mr. & Mrs. John Hryniw  
 Mr. & Mrs. Wesley E. Johnson  
 Carl E. & Dorothy Larsen  
 Mr. & Mrs. Frank A. Lockwood  
 Mrs. Evelyn Zehntbauer Lundgren  
 Mr. & Mrs. Frank T. Malley  
 Mr. & Mrs. John V. McDonald  
 Mrs. Margaret Hall Newbegin  
 Mr. & Mrs. William Pettit  
 Mr. & Mrs. Joe Robertson  
 Frank W. & Betty R. Scheible  
 James E. & Marie W. Selder  
 Mr. & Mrs. Guerry R. Smith  
 Mrs. Palmer Swanson  
 Mr. & Mrs. Allen Terry  
 Kay V. Thomas  
 Richard & Frances Tooze  
 Mrs. Ruth Turney  
 Mr. & Mrs. Robert Wechsler  
 Mr. & Mrs. Roy West  
 Mr. & Mrs. C.N. Winningstad  
 Mr. & Mrs. Norman A. Workman



## FACULTY and STAFF

Mr. & Mrs. Charles A. Adams  
 Rose Bardel  
 Mr. Bradley Baugher  
 Mrs. Donna L. Beemer  
 Dr. Robert L. Beyer  
 Mr. & Mrs. Joseph Cade  
 Ms. Sandra Cade  
 Ms. Norene Calkins  
 Maxine Carlstedt  
 Charyl Cathey  
 Ms. Diana Chenoweth  
 D. Corbet Clark  
 Donna Cody  
 Coleen Conkey  
 Marilyn Connell  
 Mr. Michael N. Cook  
 The Very Rev. & Mrs. Roy Coulter  
 Laurie & Gary Crossman  
 Cynthia K. Doran  
 Mrs. Nancy Doulis  
 Alyce Drescher  
 Ms. Margy Dunn  
 Mrs. Joan Foy  
 Mrs. Patricia Freeman  
 Ms. Linda Goertz  
 Michael & Sidney Gold  
 Mr. Joel Gray  
 Mrs. Nancy L. Gray  
 Mr. & Mrs. Stephen A. Gregg  
 Katherine Gross  
 Paula Spooner & Terry Hansen  
 Ms. Susan Jensen  
 Ms. Katherine Karalotias  
 Mr. John H. Kerslake



Curtis R. & Mariann Koop  
 Dr. & Mrs. William Lamb  
 Mrs. Sue Larson  
 Mr. & Mrs. Jim Legler  
 Allan Lehman & E. von Behren  
 Mrs. Joan Leigh  
 Constance Leonard  
 Tom & Dana Lewis  
 Helen Linster  
 Warren Hirsch & Kate Loggan  
 Dee S. Lowry  
 Mr. Matthew Lyon  
 Mr. Jeff Marsh  
 Cynthia Marshall  
 Mr. & Mrs. Craig & Karen McClure  
 Mr. John McCrea  
 Mrs. Diane Meade  
 Lilly Moore  
 Patsy Nolte  
 Ms. Susan E. Olson  
 The Rev. David Pace  
 Mr. & Mrs. C. Paul Patsis  
 Mr. Garfield Pearson  
 LouAnn Pickering  
 Mr. Gary R. Pope  
 Rothrock

Mr. & Mrs. Edward Rubovits  
 Richard & Lynne Sadler  
 Richard & Mary Sapp  
 Mrs. Joyce Schafer  
 Deborah Schaufler  
 Ms. Alice Simpson  
 Ms. Brenda Sloan  
 Bonnie & Roger Stanke  
 Ms. Susan Stark  
 Tye Steinbach & Joan Schaller  
 Mr. & Mrs. Peter W. Stevens  
 Mr. & Mrs. Dale Stewart  
 Mrs. Linda Stewart  
 Fred & Shelley Stoffer  
 Pam Vohnson & David Streight



Karen Talus  
 Ms. Linda Chavez  
 Mrs. Becky Tooley  
 Ms. Barbara Vardanega  
 Pam Vohnson  
 Mr. Thomas Wakeling  
 Dale & Patricia Walhood  
 Mr. & Mrs. Douglas Whitmore  
 Mr. & Mrs. Buckner Winston

## SPECIAL FRIENDS

Mr. & Mrs. Elmer Alsmeyer  
 Ms. Jo Ellen Boyd  
 John & Janet Charlton  
 Mrs. Clara Clifford  
 Mr. & Mrs. Richard H. Daley  
 Dr. & Mrs. H. Lenox H. Dick  
 Mrs. Gwen Duley  
 Mr. & Mrs. Harry Glickman  
 Ms. Jennifer A. Glickman  
 Mrs. Dorothy Grieve  
 E. H. Halton  
 Mrs. Evelyn Jackson  
 Mrs. Jane S. Johnson  
 Mrs. Marion W. Jones  
 Mr. R. G. Lafollette  
 Mr. & Mrs. Jack L. Larsen  
 Mrs. Georgia T. Lekas  
 Mr. David G. Lewis Jr.  
 Mr. & Mrs. F. Faber Lewis  
 Mary Ellen Lynd  
 Lady McDonald  
 Col. & Mrs. George G. Northrup  
 Mrs. Robert B. O'Connor  
 Mr. Wade A. Peterson  
 Mr. & Mrs. John V. Pinson  
 Leora H. Sayre  
 Betty Shaffer  
 Rev. & Mrs. Peter W. Sipple  
 Ms. Judith Clarke Visnick  
 Mr. & Mrs. R.A. Vitousek, Jr.  
 Mrs. Amy Wahlin  
 Mr. Hugh Walker  
 Col. & Mrs. R.O. Wellington  
 Mrs. Betty Jo Wright

## GIFTS FROM CORPORATIONS AND FOUNDATIONS

Corporations and foundations support the School through matching gifts, grants and donations of services and goods. We appreciate the business community's involvement with OES.

### Distinguished Business Honor Roll

Electra Partners  
 ETHIX Corporation

### Business Honor Roll

Beaverton Book Company  
 Deloitte & Touche  
 Dobbie & Associates  
 Pacific Roofing Co. Inc.  
 Smith & Bevil Jewelers  
 SRG Partnership/PC  
 TransWestern Helicopters, Inc.  
 Village Inn Pancake House

### Corporate and Matching Gifts

The Blount Foundation  
 The Boeing Company  
 Crown Jewelers  
 GTE Service Corporation  
 ITT Corporation  
 James River Corporation  
 Jewett, Barton, Leavy & Kern, Inc.  
 Kuni Cadillac - BMW - Sterling  
 Kurisu International  
 Master Builders, Inc.  
 May Department Stores Co.  
 Foundation  
 Nabisco Brands, Inc.  
 Overlook Restaurant  
 PACCAR Foundation  
 Portland General Electric  
 PPG Industries Foundation  
 Primerica  
 Quantum Chemical Corp.  
 Reynolds Metals Co. Foundation  
 Tektronix Foundation  
 UPS Foundation  
 Western Fluid Power

### Foundations

Adams Foundation  
 The Ralph and Adolph Jacobs  
 Foundation  
 S.S. Johnson Foundation  
 James A. and Fannie M. Malarkey  
 Foundation  
 Peninsula Community Foundation  
 Rose E. Tucker Charitable Trust



# VOLUNTEERS

## **DEVELOPMENT VOLUNTEERS 1990-91**

The following people helped the OES development effort during the past year. Their dedication, energy, encouragement and hard work made this year a success.

Tony Adams  
 Jim Baker  
 Lynn & Harley Boatsman  
 Jean Brault  
 Bill Brod  
 Moir Budden  
 Kathy Bussman  
 Edgar Clark  
 Donald Crawford  
 Julia Cule  
 Bob Dahmen  
 Sho Dozono  
 Jim and Nancy Dunn  
 Ken Gilbert  
 Sean Gilronan  
 Gail Bitar Grodem  
 Howard Harris  
 Ginger Harrison  
 Barbara Herbold  
 James Hibbard  
 Cheryl Hiller  
 Cinda Hoffman  
 Rob Holden  
 Ed Hunt  
 Betsy Johnson  
 Pat Karamanos  
 Joyce Kersteins  
 Louise Good Koch  
 Hank Laun  
 John McCrea  
 Pat Mickiewicz  
 Alan Miller  
 Jane Campbell Munly  
 Margaret "Peggy" Newhall  
 Sue Nicol  
 Joseph E. Opsahl  
 David Pratt

Susan Quattrocchi  
 Chuck Reynolds  
 R.E. Clenton Richardson  
 Saville Riley Richardson  
 Nancy Stolte Rosenfeld  
 Paul Schlesinger  
 Paul Smith  
 Tye Steinbach  
 Leigh Stephenson  
 Peter Stevens  
 Dale Stewart  
 Craig Stumpf  
 Stephen and Meri Taylor  
 Carole Thomas  
 Helen Tochen  
 Larry Wade  
 William Waltz  
 Syd Waskey  
 George and Sheila Winchell  
 Bob Winger  
 Dennis and Patty Winningstad  
 Mark Workman  
 Ted Ziegler

## **Alumni Association Board**

Eleanor Milne, JC '40, President  
 Meridel Prideaux, SHH '59,  
 President-Elect  
 Diana Buchanan, SHH '66,  
 Secretary-Treasurer  
 Viola Deck, JC '45  
 Marilyn DeVault, SHH '67  
 Nikki El-Krewi, SHH '68  
 Muriel Heltzel, SHH '30  
 Alice Iltz, SHH '40  
 Sean Kuni, OES '81  
 Sylvia Mathews, SHH '55  
 Peggy Newhall, SHH '36, JC '38  
 Glen Panny-Patrizio, OES '82  
 Nancy Rosenfeld, SHH '37  
 Ken Sakai, BDH '70  
 Geraldine Sargent, SHH '35  
 Michael Sullivan, OES '78  
 Libby Westlund, SHH '69  
 Mark Workman, BDH '69  
 Nancy Young, OES '75

## **Volunteers for Country Fair '90**

### **Volunteer Coordinator:**

Carol Stewart

### **Co-chairpersons:**

Steve Bitte  
 Emily Hoefs  
 Bob Durst

### **Committee Chairs:**

Craig and Jamie Austin  
 Bill Avery  
 Sharon Barnes  
 Peter and Missy Bechen  
 Joan Becker  
 Rebekkah Brodhacker  
 Tom and Jackie Calkins  
 Nancy Draper  
 Carol Floten  
 Mitzi Hallin  
 Jean Harriman  
 Muriel Heltzel  
 Bob Hoefs  
 Daisy Housel-Miller  
 Ed and Aurelia Hunt  
 Kathy Karafotias  
 Klaus and Sharleen Kleber  
 Lynn Kollar  
 Bernard and Jennifer Kramer  
 Kate Loggan  
 Chester and Linda Marshall  
 Beth Mason  
 Tom McClung  
 Susan McKay  
 Elaine Miller  
 Lana Miller  
 Gary Pope  
 Miriam Rogers  
 Leslie Scheible  
 Stephen Schneider  
 Bonnie Simmonds  
 Brenda Sloan  
 Terry Taylor  
 George and Sheila Winchell  
 Lynda Winningstad



# VOLUNTEERS

## Coordinating Council

Lenita Scheetz	President
Lani Thornton	Administrative Vice President
Patsy Seeley	Fund-Raising Vice President
Deb Chessar	Fund-Raising Vice President
Barbara Kaplan	Secretary
Laurie Crossman	Secretary
Carol Floten	Treasurer
Dolores Orfanakis	Bylaws Committee Chairperson
Carol Stewart	Volunteer Coordinator
Miriam Bitte	Cathedral Representative
Kathy Karafotias	Alumni Representative

### Lower School PTG Officers

Gayle Reeves	President
Dana Ostenson	1st Vice President
Barbara Kaplan	2nd Vice President
Jana Westlund	Secretary
Carol Floten	Treasurer

### Middle School PTG Officers

Carol Stewart	President
Meri Taylor	Vice President
Leslie Scheible	Secretary
Lana Miller	Treasurer

### Upper School PTG Representatives

Judy Moreland	9th grade
Noralee Sherwood	10th grade
Darlene Willard	11th grade
Missy Bechen	12th grade
Pat Schlueter	12th grade
Bonnie Brod	Treasurer





# AARDVARK FUN PARK

Our heartfelt thanks to the thousands of people: parents, students, alumnae/i, grandparents, trustees, faculty, staff and many, many special friends, who helped to make the Lower School playground a reality. Donations of everything from a clown to a hundred hours in the mud to pizza for 300, built the fantastic Aardvark Fun Park. Years of carefree play and enjoyment will stand as a testament to the accomplishments of teamwork.

## Donors

### ANONYMOUS

Dr. and Mrs. Aftab Ahmad  
 Mr. and Mrs. Richard C. Alexander  
 Mrs. Kathleen Ames  
 Dr. and Mrs. Kendall Barker  
 Mr. and Mrs. Peter Bechen  
 Mr. and Mrs. Steven Bitte  
 Mr. and Mrs. Timothy Bliss  
 Mr. and Mrs. Martin Brantley  
 Mr. and Mrs. Jean D. Brault  
 Mrs. E. Jeannette Brown  
 Mr. and Mrs. Larry Brown  
 Mrs. Mary Brown  
 Mr. and Mrs. David Burns  
 Mr. and Mrs. Joseph Cade  
 Mr. and Mrs. Leonard Cain  
 Maxine and Paul Carlstedt  
 Mr. and Mrs. Michael A. Carrier  
 Mrs. Terry Carroll  
 Dr. and Mrs. Richard Chapman  
 Ms. Diana Chenoweth  
 Mr. Tom Chou and Ms. Lan Lu  
 Mr. and Mrs. Dennis Collins  
 Mrs. Helen G. Cooper  
 Dr. Thomas Crawford and Ms. Janet Trullinger  
 Mrs. Laurie Crossman  
 Mr. and Mrs. Bryan M. Cullivan  
 William Davenport and Janet Maurer  
 Ms. Kathryn Engholm  
 Mr. and Mrs. Richard England  
 Falk Ace Hardware  
 Grant and Mary Ellen Farr  
 Ms. Carol Floten  
 Dr. H. Storm Floten  
 Friends of Linda Goertz  
 Judge Helen J. Frye  
 Craig Fuller and Victoria J. DeVito

Mr. Richard Garvin  
 Mr. and Mrs. Gerry Gerard  
 Mrs. Maria-Elaina Gilbert  
 Mr. and Mrs. Sean Gilronan  
 Mr. and Mrs. Allan Goodman  
 Mr. Clarence Greenwood  
 Dr. and Mrs. Brian Harwood  
 Mr. and Mrs. Bengt F. Hedlund  
 Mr. and Mrs. Thomas R. Henkle  
 Mr. and Mrs. Henry H. Hewitt  
 Mrs. M.R. Hirschbuhl  
 Mr. and Mrs. Peter Hoffman and Family  
 Mr. and Mrs. Hoi Huynh  
 Dr. Mehmet Inan  
 Mr. and Mrs. Alex C. Johnson, Jr.  
 Mr. and Mrs. Reilly Jones  
 Mrs. Bea Kaplan  
 Mr. and Mrs. Lawrence Kaplan  
 Mr. and Mrs. John D. Karamanos  
 Mr. and Mrs. Kevin Kerstiens  
 Kidder, Peabody & Company  
 Jeff and Andy Kinzer  
 Drs. David and Janice Knox

Mr. and Mrs. Curtis R. Koop  
 Dr. and Mrs. Walter R. Krieger  
 Mr. and Mrs. Walter O. Krumbholz, Jr.  
 Dr. and Mrs. Robert J. Laird  
 Mr. Gregory Landers  
 Mr. and Mrs. Arthur Larson  
 Dr. and Mrs. W. David Larson  
 Mr. Robert Leathers  
 Dr. and Mrs. Wesley A. Lewis  
 Mr. Harry Loggan  
 Ms. Kate Loggan  
 Dee Lowry  
 Thelma Lowry  
 Mrs. Evelyn Lundgren  
 Dr. and Mrs. Peter Lyon  
 Mr. and Mrs. William Marshall  
 Mason, Rowlette, and McFarland  
 Robert and Pamela Matheson  
 Ms. Atsuko Matsuyama  
 Tom & Karen McClung  
 Mr. and Mrs. James E. Miller  
 Mrs. Lila Miller  
 Mr. and Mrs. Ted Miller

Matthew Miller and Kathleen Dodds  
 Dr. and Mrs. Christopher Morgan  
 Mr. Craig Murphy and Ms. Julie Frantz  
 Ms. Mary Jo Nyblad  
 Mr. and Mrs. Ralph T. Nyblad  
 OES Lower School Faculty  
 OES Lower School PTG  
 OES Staff  
 Mr. and Mrs. Joseph E. Opshal  
 Dr. and Mrs. Gary Ostenson  
 Pacific Hardware & Electric Company  
 Mr. and Mrs. James Pickering  
 Mr. and Mrs. Christopher Platt  
 Frank and Carol Powers  
 Ms. Susan Quattrocchi  
 Patrick and Linda Radecki  
 Mrs. Gayle Reeves  
 Dr. and Mrs. Daniel Risser  
 Mrs. Susan Robinson  
 Mr. and Mrs. Thomas V. Robinson  
 Mr. and Mrs. Harvey W. Rogers  
 Mr. and Mrs. William Russell  
 Mr. and Mrs. Richard Sadler  
 Mrs. Masami Saitoh  
 Drs. John and Trudy Samples  
 Dr. and Mrs. Richard W. Sapp  
 Mrs. Mary Schunk  
 Miles and Patsy Seeley  
 Mrs. Sandra Shilling  
 Ms. Brenda Sloan  
 Mr. and Mrs. Paul Smith, Kendra and Derek  
 Ms. Adrienne Souther  
 Peter and Hope Stevens  
 Mrs. Edeltraud Stoeckl  
 Mr. and Mrs. John Taylor and Family  
 Mr. and Mrs. Stephen Taylor  
 The Tektronix Foundation, Inc.  
 Mrs. Anne Thanouser  
 Dr. and Mrs. Thomas Thornton  
 Dr. and Mrs. Matti Totonchy  
 Mr. and Mrs. Peter Turney  
 Mr. and Mrs. Kris Van Hatcher  
 Dr. and Mrs. Edward E. Ward  
 Dr. and Mrs. James Waskey  
 Dr. and Mrs. Richard Westlund  
 Mr. and Mrs. Robert Wight  
 Mr. and Mrs. Jack Wilborn  
 Mr. Thomas Wilson and Ms. Diedre Cain  
 Mr. and Mrs. Robert Winger  
 Mrs. Patricia Winningstad  
 Mr. and Mrs. Mark Workman  
 Ms. Barbara Wuest  
 Dr. and Mrs. Ian A. Young  
 Dr. and Mrs. Steven Zack



**Coordinators** Julie Lewis and Jana Westlund  
**Treasurer** Carol Floten  
**Fundraising** Carol Stewart  
**Volunteers** Brenda Sloan  
**Food** Sharon Hewitt, Dana Lewis, Miriam Rogers, Judy Jensen, Alice Kinzer and Sue Gundle  
**Tools** Kathie and Al Sorensen  
**Materials** Don Kinzer  
**Public Relations** Mariann Koop  
**Children's Committee** Syd Waskey and Barbara Kaplan  
**Childcare** Gayle Collins and Maria-Elaina Gilbert  
**Clerical Helper** Janice Brown

# AARDVARK FUN PARK

## Gifts in Kind to Aardvark Fun Park

A-Boy Electric & Plumbing Supply  
 Albertsons  
 Alpenrose Dairy  
 Arctic Circle  
 Associated Hose Products, Inc.  
 Azteca Restaurant  
 Cathie Hurliman Baker/Stoel Rives  
 Boley Jones & Grey  
 Baker Rock Crushing Company  
 Linda Barker  
 Baskin-Robbins Thirty One Ice Cream  
 Baugh Construction Stores  
 Baxter Auto Parts, Inc.  
 Beaver Bolt, Inc.  
 Beaverton Auto Parts, Inc.  
 Beaverton Printing, Inc.  
 Donna Beemer  
 The Book Barn for Children  
 Mary Brown  
 Burger King  
 Burgerville USA  
 Burlingame Grocery  
 C & H Tree Service  
 Norene Calkins  
 Carolyn Campbell, St. Mary of the Valley High School  
 Cascade Karate Club  
 Cascade-Phillips Company  
 Layne Caswell  
 Cedar Mill Lumber & Hardware  
 Chown Hardware & Machinery  
 City Cellular  
 Clackamas Gleaners  
 Brian Clopton  
 Coast Crane & Equipment  
 Lee Coleman  
 Comella & Son & Daughter  
 Consolidated Freightways  
 Costco Wholesale Club  
 Darigold Dairy  
 Damerow Beaverton Ford  
 Steve deHart Insurance  
 C.T. Dennis  
 Domino's Pizza  
 Dunkin Donuts  
 Bob Eaton  
 Emmert International  
 Ernesto's Italian Restaurant  
 Esco Northwest  
 Falk Ace Hardware  
 Floral Trends Limited  
 Food Services of America  
 Foremost Dairies Northwest  
 Franz Bakery  
 The Fred Meyer Challenge  
 Fred Meyer, Inc.  
 Fuddruckers  
 G.I. Joe's, Inc.  
 Jay Gerard  
 Sidney Gold  
 Goldberg's Bakery  
 Graham's Book & Stationery  
 Jean Havelick, St. Mary of the Valley Grade School  
 Sharon Hewitt  
 The Hillsdale Coffee Merchant  
 Hillsdale Pastry Shop  
 Homeclub  
 Jenny Horton  
 Hot Lips Pizza  
 Hot Moves  
 Joe Bread  
 Jolly Molly the Clown



Jubitz Truck Stop  
 K 103, Craig Walker  
 Key Manufacturing & Rentals, Inc.  
 Kienow's Food Stores  
 Bill Kimmer  
 Jim Kruse  
 Lake Grove Market  
 Lamthong Restaurant  
 Louisiana-Pacific Corporation  
 Marks Brothers, Inc.  
 McCormick's Fish House  
 McDonald's  
 Linda McKibben  
 The Melting Pot Restaurant  
 Metro Machinery Rigging  
 Mill End Store  
 Miller Disposal  
 Miller Paint & Wallpaper Co., Inc.  
 Murrayhill Thriftway  
 Nature's Fresh Northwest  
 Ohno the Clown  
 Jimm Omodt  
 Oregon Bakery and Deli  
 Oregon Karate Association  
 The Oregon Puppet Theatre  
 Overlook Restaurant  
 Pacific Paint & Decorating Center, Inc.  
 Pacific Rim Chain, Inc.  
 Lou Paff  
 Parr Lumber Company  
 Parr Lumber/Wankers Corner  
 Payless Drug Stores  
 Peddler's Pack  
 Phil's Uptown Meat Market  
 LouAnn Pickering  
 Piece of Cake  
 Pietro's Pizza Restaurants  
 Platt Electric Supply, Inc.  
 Poncho's  
 Portland Bottling Company  
 Portland Community College (Welding Dept.)  
 Powell's Books  
 Red Lion Hotels & Inns  
 Red Robin Burger & Spirits Emporiums  
 J.C. Reeves Corporation  
 Rice Safety Equipment Company  
 Rigging Products, Inc.  
 Round Table Pizza  
 Rubber & Plastics, Inc.  
 Gaye Rumsey  
 St. Mary of the Valley Grade School  
 St. Mary of the Valley High School  
 St. Vincent Hospital & Medical Center, Food Services  
 Sanderson Safety Supply Company  
 Schuck's Auto Works  
 Sir Speedy Printing Center  
 Stephanie, Inc.  
 Supply One  
 Sylvan Medical Service, Inc.  
 Szechuan West  
 Taco Bell  
 Target Stores  
 June Taylor's School of Dance  
 Terrecon, Inc.  
 Tualatin Valley Builders Supply  
 United Fire Health and Safety  
 United Pipe & Supply Company  
 US West Communications  
 Val's Bagels  
 The Village Inn Pancake House  
 Corby Ward  
 Webber Hardware  
 Winchell's Donuts  
 Danny Woo's Restaurant

# AARDVARK FUN PARK

## Volunteer Workers

The following list was compiled from the daily sign-in sheets. These names represent only a small portion of the many volunteers who made the Fun Park a reality. Thank you to everyone for your hard work and dedication.

John Adams  
 Margie Adams  
 Tony Adams  
 Carolyn Alexander  
 Bob Ames  
 Kathleen Ames  
 Farhat Azhar  
 Sandy Baker  
 Steve Baker  
 Dale & David Balmer  
 Richard Bambam  
 Don Bardel  
 Ike Bay  
 Dan Bedell  
 Liz von Behren  
 Ginny Bliss  
 Jean D. Brault  
 Kathy Brault  
 Jeannette Braun  
 Lou Brinegar  
 Bill Brod  
 Debbie Brodie  
 Paul Brodie  
 Byron Brown  
 Janice Brown  
 Jeannette Brown  
 Larry Brown  
 Claudette de Bruin  
 Monique de Bruin  
 Dave Bussman  
 David Cade  
 Joe Cade  
 Sharon Cade  
 Maxine Carlistedt  
 Cheryl Carrier  
 Mike Carrier  
 Cam Carroll  
 Nancy Chapman  
 Diana Chenoweth  
 Tom Chou  
 Myra Clark  
 Donna Cody  
 Cal Collins  
 Dennis Collins  
 Grant Collins  
 Mike Collins  
 Mary Conover  
 Kit Cook  
 Mike Cook  
 Chris Cooper  
 Tom Crawford  
 Mark Cross  
 Gary Crossman  
 Laurie Crossman  
 Lisa Cullivan  
 Jeff Cummings  
 Bob Dahmen  
 Jim Dalton  
 Bill Davenport  
 Andy Davis

Sherry Davis  
 Rich DiGiovanni  
 Kathleen Dodds  
 Mary Dorscheimer  
 Nancy Doulis  
 Julie Drinkward  
 Nancy Duggan  
 Harold and Laura Eding  
 Kathy Engholm  
 Marcy Englund  
 Bruce Evans  
 Grant Farr  
 Mary Ellen Farr  
 Sally Fish  
 Carol Floten  
 Tara Floten  
 Case Fritz  
 Rob Froom  
 Victoria Fuller  
 Barbara Gaines  
 Cindy Gaines  
 Wesley Gerard  
 Ken Gilbert  
 Sean Gilronan  
 Eric Gold  
 Sidney Gold  
 Allan Goodman  
 Joel Gray  
 Lynn Greenberg  
 Clarence Greenwood  
 Myrtle Rae Greenwood  
 Kristena Gregg  
 Robert Gregg  
 Stephen Gregg  
 David Hamilton  
 Julie Hammond  
 Wayne Hammond  
 Kent Haskard  
 Jeri Haskins  
 Dave Hassler  
 Karen Van Hatcher  
 Kris Van Hatcher  
 Dan Hatton  
 Nikki Hatton  
 Lisa Hayward  
 Barbara Herbold  
 Jim Herbold  
 Cathy Herlocker  
 Sharon Hewitt  
 Jim Hibbs  
 Chris Hikes  
 Geri Hikes  
 Katie Hikes  
 Warren Hirsch  
 Cinda Hoffman  
 Chris Houser  
 Jiyoun Huh  
 Koichi Ike  
 P.J. Janney  
 Patty Jeanne  
 Alex Johnson  
 Alyssa Johnson  
 Elaine Johnson  
 Eric Johnson  
 Ian Johnston  
 Barbara Kaplan  
 Larry Kaplan  
 Pat Karamanos  
 Mary King  
 Wayne Kingsley  
 Alice Kinzer  
 Jeff Kinzer  
 Jam Kitchel

Klaus Kleber  
 Sharleen Kleber  
 Tony Klein  
 Rhonda Knoche  
 Dave Knox  
 Mike Kremkau  
 Matt Krill  
 Bob Laird  
 Mary Laird  
 Dan Lamb  
 John Lamb  
 Greg Landers  
 Art Larson  
 David Larson  
 Jeanette Larson  
 Hank Laun  
 Gran Lee  
 Mary J. Lee  
 Allan Lehman  
 Julie Lewis  
 Wes Lewis  
 Helen Linster  
 Chris Locke  
 Thelma Lowry  
 Erik Lund  
 Patrick Lynett  
 Elisabeth Lyon  
 Matt Lyon  
 Peter Lyon  
 Chester Marshall  
 Cindi Marshall  
 Atsuko Matsuyama  
 Matt  
 Janet Maurer  
 R. Maurer  
 Tim McCarthy  
 Karen McClung  
 Craig McClure  
 John K. McCrea  
 Dave Mellinger  
 Aubrey Merdalo  
 Josh Michtom  
 R.D. Mickiewicz  
 Pat Mickewiz  
 Joyce Mijo  
 Monica Millan  
 Matt Miller  
 Ted Miller  
 Lilly Moore  
 Greg Morgan  
 Dave Moser  
 Graig Murphy  
 Fred Nachtigal  
 Robert Newhall  
 Scott Nicol  
 Colleen Olney  
 Jimm Omodt  
 Suzie Opsahl  
 Dana Ostenson  
 Toni Page  
 Mike Pamichello  
 Ed Parl  
 Jean Patsis  
 John Pedisich  
 Mark Perry  
 Rosanne Perry  
 Cathe Phillips  
 Dan Phillips  
 Hal Phillips  
 Helene Phillips  
 Jim Pickering  
 Lou Ann Pickering  
 J.H. Polstra

Vickie Ponting  
 Mei Lin Poon  
 Terry Poon  
 Gary Pope  
 W. Poundstone  
 Jamie Powell  
 Robin Powell-Herbold  
 David Pratt  
 Adam Price  
 Susan Quattrocchi  
 Brian Reeves  
 Gayle Reeves  
 J.C. Reeves  
 Chuck Reynolds  
 Julien Ritter  
 Joe Robertson  
 Susan Robinson  
 Miriam Rogers  
 Stacey Romez  
 Rothrock  
 Beth Russell  
 Scott Russell  
 Sue Russell  
 Masami Saitoh  
 Coreen Sapp  
 Mary Sapp  
 Richard Sapp  
 Shelley Schaefer  
 Lenita Scheetz  
 Michael Scheetz  
 Ann Schneider  
 Jack Schunk  
 Pat Semura  
 Sandy Shilling  
 Wendy Siemens  
 Bonnie Simmonds  
 Geoff Simmonds  
 Brenda Sloan  
 Jean Smith  
 Linda Smith  
 Rolf Snyder  
 Allison Solberg  
 Kate Solberg  
 Scott Solberg  
 Cathie Sorensen

Allan Sorenson  
 Jill South  
 Sue Stark  
 Ed Stevens  
 Hope Stevens  
 Peter Stevens  
 Brigitte Stout  
 Terri Swayze  
 John Taylor  
 Karen Taylor  
 Meri Taylor  
 Ryan Taylor  
 Ned Thanhouser  
 Najla Totonchy  
 Laurie Turney  
 Peter Turney  
 Bill Waltz  
 Joe Warner  
 John Waskey  
 Syd Waskey  
 Eric Weiller  
 Carolyn Weleber  
 Jana Westlund  
 Richard Westlund  
 Doug Whitmore  
 Rose Whitmore  
 Tessa Williamson  
 Tom Wilson  
 Cory Winchell  
 Sheila Winchell  
 D. Winchester  
 Bob Winger  
 Elisa Winger  
 Jane Winger  
 Patty & Dennis Winningstad  
 Marie Winston  
 Adam Woodward  
 Mark Workman  
 Cherie Yokota  
 Ian Young  
 Annette Zack  
 Steven Zack  
 Roman Zawodny  
 Leslie Zega





## PLANNED GIVING

### *The Heritage Society*

The Heritage Society honors those who provide for OES through their estate planning. For more than a century, OES has benefitted from the long-range planning and vision of thoughtful trustees, alumnae, parents, faculty, staff and friends. The School is grateful to past and present Heritage Society members for their thoughtfulness. Their generosity has been instrumental in building an endowment of over \$3 million, which helps secure our future.

#### Anonymous

Patricia Kendall Apperson, JC '48  
Mrs. Ned Barclay Ball  
The Rev. & Mrs. James Boston  
Benjamin Bullwinkle &  
Jean Groves Bullwinkle, '37  
David G. Charlton  
Anne Mall Gulley, '17  
Jane Lowe Hiller, '17  
Mr. & Mrs. Bruce Holliday  
Jim Hutchinson  
Mr. & Mrs. Gordon R. Janney  
Marian Jenkins, '20  
Ruth Jenkins, '20  
Elizabeth Johnson, '69  
Henry Keller & Eola R. Keller, '12  
Caroline Lintzenberger  
Joan Lucero, '74  
Patricia Simmons Maulbetsch, JC '41  
Louis H. Paff  
Elizabeth Reeves, '32  
Geraldine H. Sargent, '35  
Michael & Lenita Sheetz  
Irene E. Soehren, '32  
Mrs. John A. Warren, '33

If you have included Oregon Episcopal School in your estate planning or would like to do so, please contact the Development Office at (503) 246-7771.

# THE CLASS OF

# 1 ♦ 9 ♦ 9 ♦ 1

**Mark P. Ashton**

Wilsonville, OR

- \*University of Oregon
- PSU, U of Washington

**Sarah G. Bechen**

Lake Oswego, OR

- 1991 Oregon Scholar
- \*Middlebury
- Colorado College,
- Connecticut, Johns Hopkins,
- Vassar

**Mark C. Behrens**

Portland, OR

- \*Occidental
- U of O, U of Portland

**Andrea J. Bell**

Vancouver, WA

- 1991 Oregon Scholar
- \*Scripps
- Carleton, Macalester,
- U of O/Honors College

**Sherrill L. Bennington**

Portland, OR

- 1991 Oregon Scholar
- \*Occidental
- Bryn Mawr, Oberlin,
- U of Washington, Wesleyan

**Martin Bleeck**

Tigard, OR

- \*Whitman
- Willamette

**Adrian L. Brandt**

Vancouver, WA/Pakistan

- \*Ohio University
- Evergreen, Ithaca,
- U of Hawaii, U of Rochester

**Tracy A. Brod**

Milwaukie, OR

- \*U of Colorado
- Tufts, U of Santa Cruz, Union

**Ashwin Budden**

West Linn, OR

- \*Pacific Lutheran
- Colorado College

**Clair K. Clark**

Portland, OR

- Mary Rodney Award
- 1991 Oregon Scholar
- \*U.S. Navy
- U of Rochester

**Derek J. Collins**

Edmonds, WA

- \*Boston University
- U of Washington

**Tracy A. Cone**

Portland, OR

- \*U of Oregon
- U of Idaho

**Elizabeth L. Cooper**

Sherwood, OR

- \*Mount Holyoke
- Mills, Whitman

**Craig R. Dowsett**

Portland, OR

- \*Rhode Island School of Design
- Gonzaga, U of San Francisco,
- Whitman

**Suzanne J. Geary**

Vancouver, WA

- \*Tulane
- U of Puget Sound
- U of Washington

**Sharon E. Gebbie**

Portland, OR

- \*New York University

**Eric L. Gold**

Portland, OR

- Alumni Award
- 1991 Oregon Scholar
- \*Princeton
- Brown, Pomona, U of Chicago

**Lilith M. Hayakawa**

Sherwood, OR

- 1991 Oregon Scholar
- English-Speaking-Union
- \*Yale
- Claremont McKenna,
- Occidental, Williams

**Jiyoung Huh**

Seoul, Korea

- \*Lewis & Clark
- U of Portland, U of O

**Koichi Ike**

Osaka, Japan

- \*U of Portland
- U of O, Gonzaga, Pacific
- Lutheran

**Ian B. Johnston**

Forest Grove, OR

- \*Evergreen
- S OR State, U of O,
- U of Washington

**Naoki Kawada**

Tokyo, Japan

- \*Washington University
- Lake Forest, St John's,
- U of Puget Sound

**Ryanne M. Keys**

Portland, OR

- \*Santa Clara

**Adam C. Kobos**

Bishop Dagwell Award

Headmaster's Award

Oregon City, OR

1991 Oregon Scholar

- \*Amherst
- Harvard

**Anil R. Krishnamurthy**

Portland, OR

- \*U of Oregon
- Lewis & Clark, OSU,
- Pepperdine, U of Portland,
- Whitman

**John W. Laidlaw**

J. Milne Manson Award

Everson, WA

- \*U of Alaska (Anchorage)

**Brittani N. Lee**

Vancouver, WA

- \*U of Nevada (Reno)
- Central Washington,
- U of Alaska (Anchorage)

**Erika K. Legler**

Lake Oswego, OR

Susan Elizabeth McClave Award

- \*Concordia (Minnesota)

**Joseph W. Ma**

Hong Kong

- \*Georgetown
- Boston University, Grinnell,
- NYU, Oberlin

**Anna C. Martens**

Vancouver, WA

Patron's Award

- \*Carleton
- Bowdoin, U of Washington,
- Whitman

**Krisztina Nagy**

Budapest, Hungary

Returning to Hungary

**George H.J. Orfanakis**

Lake Oswego, OR

- \*Colorado College
- Colby, Wooster

**Amy S. Post**

Newberg, OR

- \*Pacific Lutheran

**Julien D. Ritter**

Salem, OR

- \*U of San Francisco

**Jessica Sankey**

Portland, OR

Susan Elizabeth McClave Award

1991 Oregon Scholar

- \*Northwestern
- Colorado

**Michael C. Scheetz**

Vancouver, OR

- \*U of Portland

**John A. Schlueter**

Tigard, OR

- \*Linfield

**Anthony K. Shum**

Vancouver, WA

Alumni Award

1991 Oregon Scholar

- \*U of Chicago
- Colby, Reed,
- U of Washington

**Brian M. Sitoski-Gabbard**

Riyadh, Saudi Arabia

- \*U of Southern California
- Carnegie Mellon, Southern
- Methodist

**Jessica E. Tanne**

Vancouver, WA

- \*Bryn Mawr
- Barnard, Brandeis, Pitzer,
- U of Washington

**Amy C. Tarlow**

Portland, OR

- \*Seattle University

**Sasha K. Weleber**

Portland, OR

1991 Oregon Scholar

- \*Wellesley

**Noah Williams**

Portland, OR

- \*U of Alaska (Anchorage)
- PSU

**Aguri Yonai**

Hikigan, Japan

- \*Pine Manor

**Roman J. Zawodny**

Brush Prairie, WA

Post-graduate year at

Eton College, England

- \*Notre Dame
- U of Portland,
- U of Washington, Whitman

- \*Designates graduate's choice among college acceptances.

# GRADUATION



1 9 9 1



# The Alumni Board President's Corner

A U T U M N  
1 9 9 1

**By Meridel Prideaux,  
1991-92 Alumni Board President**

The President's Corner is a new feature appearing in the Bell Tower. Each issue will be written by Meridel to inform our alumni and community of the activities and commitment that the Alumni Board has to OES.

This is an exciting time to be part of the OES community! This year, the Alumni Association has made some changes. In September, the Alumni Board held its first monthly meeting of the year. By holding monthly meetings, we hope to increase the number of activities that involve alumni and the OES community. For the first time, members of the board will attend a day long "planning" retreat in October.

I would like to invite you to attend our 122nd Founder's Day luncheon on November 13, at the Multnomah Athletic Club. The day promises to be an exciting one! Our guest speaker is John Nance, a photo journalist who will address the excitement of today's changes in the world and its effect on today's youth. For the first time, an alumna/us will be awarded the Bishop Benjamin Wistar Morris Distinguished Service Award.

At this time, the Alumni Office is working to create a new and revised version of the Alumni Directory. We hope to have this wonderful book completed by the spring. If you haven't completed your directory survey, please take a moment and fill out a form in the back of this issue of the Bell

Tower. The directory will be a great source of information and networking for everyone.

Plans are being made for the 125th year celebration to take place in 1994. One of the goals for the alumni is to raise a birthday endowment gift to the school of \$125,000. If you would like to be involved in this once in a lifetime event, please contact me or the Alumni Office.

As you see, we have ambitious goals and plans for the year. Please join us, we would love to meet you! If you have any suggestions on how we can serve our alumni community, please call me.



Meridel Prideaux



Gwyneth Gamble Booth (above left) was the featured speaker at the 1991 Annual Spring Luncheon. Alumni Weekend also featured class reunions and time to catch up on news of classmates.



## Fall Alumni Association Calendar

- NOV 13** Founder's Day Luncheon, 11:30 social, 12:00 lunch, Multnomah Athletic Club
- DEC 12** Dinner Meeting, 5:00pm, Advent Services, 7:00 pm
- JAN 7** Luncheon and Business Meeting, 12:00 lunch, OES Campus
- FEB 12** Luncheon and Business Meeting, 12:00 lunch, Downtown

Oregon Episcopal School

## Alumni Board welcomes new members

The 1991-92 Alumni Association will begin the year with eight new members. The new officers are: Sean Kuni '81, President-elect, Meridel Prideaux '59, President and Diana Buchanan '66, Secretary/Treasurer.

board, is to involve more out-of-state alums and create groups for potential students. She and her husband James have three sons.

Also having served on the board before, MARJORY DAY hopes to

specializing in workers' compensation. His special interest is lobbying the legislature for the disabled. A board member of his local county's Association for Retarded Citizens, Stafford is married and has two children, a boy and a girl.

EMMA-JANE HOWARD, a homemaker and busy grandmother, became involved in alumni affairs last year when her class of 1940 celebrated their 50th reunion. She was the class organizer. She enjoys gardening, traveling, reading, painting, music and spending time with her family. She is also involved in various activities with her husband, William, who is a dentist and department chairman at the OHSU School of Dentistry.

Vice president and general manager of US Travel Systems, ELIZABETH "LIZA" LILLEY enjoys tennis, golf, travel and knitting. She's also a member of Colonial Dames of America and the Institute of Certified Travel Agents. One of the goals Liza hopes the alumni board will pursue is to enhance the academic reputation of OES.

JANICE REINMILLER enjoys traveling, reading, art and antiques, photography and writing. The mother of two, she is active in her church and in the local art association. Janice served on the alumni board in the early '70s.

A reading and gardening enthusiast, ALICE TREWHELLA has other OES connections. She's an alumni parent, the mother of Christine Urquhart, Class of 1971. Her husband, The Rev. C.K. Trehwella, is retired from his position as chaplain at Good Samaritan Hospital in Portland.

The following people are continuing their terms on the Alumni Board for 1991-92.

<i>Nikki El-Krewi</i>	SHH '68
<i>Helen Felker</i>	SHH '31
<i>Alice Iltz</i>	SHH '40
<i>Peggy Newhall</i>	SHH '36, JC '38
<i>Glen Panny-Patrizio</i>	OES '82
<i>Nancy Rosenfeld</i>	SHH '37
<i>Geraldine Sargent</i>	SHH '35
<i>Michael Sullivan</i>	OES '78
<i>Nancy Young</i>	OES '75



Alumni Board officers traditionally serve at the Annual Senior Reception.

The new board members represent various constituencies of the School's history - St. Helens Hall, the Junior College, Bishop Dagwell Hall and OES - and span the years from the '20s to the '70s. Several have served on the alumni board before. Meet new board members Pat Kendall Apperson JC '48, Marjory Holman Day '28, Helen Stratton Felker '31, Stafford Hazelett BDH '67, Emma-Jane Pearson Howard '40, Elizabeth Lilley '74, Janice Wiecks Reinmiller '57 and Alice Kimball Trehwella '41.

PAT APPERSON is back on the board for another term. Her hobbies include horticulture, reading, travel, needlepoint, knitting, boating and swimming. She is active in her church as well as various organizations in and near her hometown of Olympia (WA). One of Pat's goals for the alumni

encourage more alumni participation in bringing attention to OES, its activities and its needs. Marjory, mother of three, keeps active volunteering, gardening, walking and swimming. She is treasurer of the Portland Colony of the National Society of New England Women.

HELEN FELKER is active in her church and a local hospital auxiliary. She enjoys Japanese flower arranging and gardening. Another previous board member, Helen has four sons and several grandchildren.

STAFFORD HAZELETT has "family connections" with OES. His father, The Rev. Jackson Hazelett, was a former trustee and teacher in the early '70s; his mother, Patricia Waters Hazelett, is an alumna from the St. Helens Hall class of '43. Stafford is an attorney

# St. Helens Hall graduates visit campus

On Saturday, August 24, St. Helens Hall graduates from the classes of 1965-1972 returned to the OES campus for a day of socializing and renewing old friendships.

Classmates and their families spent the sunny afternoon enjoying an old fashioned picnic lunch, playing croquet on Senior Lawn and laughing and reminiscing over old yearbooks. During tours of the campus, classmates could be heard chatting about the dorms, horse back riding, the men of BDH and teachers. Former faculty members, Helga Daret (PE and MS principal), Lenore Klink (Fencing) and Sally Larson Taylor (US Librarian) told wonderful stories about the antics of the SHH girls. Many of the women remember attending the downtown site and moving up to the Nicol Road campus in the fall of 1963.

In the evening, a social and dinner was held. The dining room was decorated with St. Helens Hall memorabilia including school banners, pictures and uniforms. Honored guests at the dinner were former faculty members Jim Weber (Math), Cynthia Doran (English and History) and Lenore Klink; Mary Reynolds, past parent and trustee, also attended. OES Headmaster, Peter Stevens, spoke about the State of the School and Meridel Prideaux, Alumni Board President, reviewed the upcoming activities of the Alumni Association. Sarah Collins Milliken '68, who now resides in Los Angeles, was recognized as the alumna who had traveled the farthest to attend the reunion. As the day ended, classmates promised to stay in touch and meet again.

Special thanks to the St. Helens Hall Reunion Committee Members

- Bernice Stevenson Bean '72*
- Alexandra Dussin Cook '70*
- Nikki Davis El-Krewi '68*
- Cinda Taylor Hoffman '65*
- Betty Rennett Hooton '68*
- Marni Bethell Johnson '69*
- Kathy Karafotias '66*
- Jane Ehrlich Marshall '70*
- Maryanne Bailey Nosier '66*
- Melanie Poss '72*
- Lee Diane Collins Vest '67*



## OES to celebrate 122 years on Founders' Day

The annual luncheon to commemorate the founding of St. Helens Hall, Bishop Dagwell Hall and Oregon Episcopal School will be held on Wednesday, November 13 at the Multnomah Athletic Club. All trustees, faculty, staff, parents and members of the OES community are invited to celebrate in this great event.

The Alumni Association is pleased to welcome John Nance as the Founders' Day guest speaker. Nance, a Portland native, is an award-winning author, teacher and photojournalist who covered the war in Vietnam. He has written five books and many magazine articles

which have focused on the Tasady Stone Age people who live in the rainforests of the Philippines and have no weapons or words for war. He has also appeared on national television programs such as The Today Show, Good Morning America and Bookbeat.

This year will also mark the first time an alumna/us will be awarded the Benjamin Wistar Morris Distinguished Service Award. This award has been established to recognize St. Helens Hall, Bishop Dagwell Hall and Oregon Episcopal alumni who, through their commitment and service, have achieved significant successes in their professional careers and/or have made outstanding contributions in community involvement, thereby bringing honor to themselves and to OES.



John Nance

Oregon Episcopal School

**In Memoriam**

**1911**

**Gene Spencer Herron** passed away a year ago April in California. Her granddaughter wrote the Alumni Office and recalled that her grandmother had many fond memories of St. Helens Hall.

**1932**

**Saville Riley Richardson** died of cancer July 18 at her home. The Rt. Rev. Hal R. Gross, retired Suffragan Bishop of Oregon, officiated at a memorial service held in St. Paul's Episcopal Church in Oregon City (OR). Saville started at St. Helens Hall in 1920 when she was in first grade and continued until her graduation from high school in 1932. She had been active in alumni activities, serving on the Alumni Board and as a caller at phonathons.

**1935**

**Nancy Ann Hilton Leary** died last spring in Portland.

**1936 JC**

**Betty Karnopp Mills** died November 21, 1990 in Portland.

**1981**

**Jenny Horniman** died March 26 in a Portland hospital of complications from knee surgery. Burial service was held in the Cathedral of St. John the Baptist on the OES campus on March 30. Jenny was born in Canada but moved to Portland with her family in 1977. She graduated with honors in economics from Queens University in Canada. Survivors include her parents, Dr. and Mrs. Euan Horniman, Portland; sisters, Lindsay Frey of Kenya, Africa, and Sue Van Volkenburg of Boston; and a brother, James of Vancouver, British Columbia.

**CLASS NOTES**

**1920**

Following the death of her husband last June, **Suzanne Caswell Honeyman** moved to Boise to be near her daughter. Her new address is 3222 Hillcrest Lane, Boise, ID 83705.

**1926**

**Eleanor Williams Kornahrens** volunteers at a local library. In addition to her three children and five grandchildren, she enjoys reading, handwork and gardening. Her travels have included trips on the Amazon River and Germany. Eleanor's current address is 8580 SW Birchwood, Portland, OR 97225.

Traveling is a large part of **Vivian Sandstrom McCracken's** life. She writes that she travels outside the country seven months a year. Her latest travels have been to Tibet and Burma. Her address is 4800 N. 68th St. -150, Scottsdale, AZ 85251.

**Eleanor Poorman Hamilton** writes that at age 81, she's "more adventurous and can take more risks for what I believe." Eleanor has written six books, over 50 magazine articles and several newspaper columns. She is listed in Who's Who of American Women, 2000 Women of Distinction in the World, Men & Women of Science and The World's Who's Who of Women. In her leisure time, Eleanor likes listening to people's stories, advocating freedom of choice for abortion and working on environmental issues. She writes that she has had fun "being a controversial guest" on many TV programs including Phil Donahue, People Are Talking and Good Morning America. Currently director of a local counseling center, Eleanor lives at 60 E. Robert Dr., P.O. Box 765, Inverness, CA 94937.

**1931**

**Hannasue Watts Steel** enjoys horseback riding, bridge, aerobics, gardening and reading. She has visited Yugoslavia, Turkey, Italy, Greece, England and dude ranches in Arizona. She remembers Mrs. Walker and Mrs. Fariss who were "warm and understanding of adolescent antics." Hannasue's address is 3363-1F Monte Hermoso, Laguna Hills, CA 92653.

A housewife who "never retires," **Rhoda Holman Statter** enjoys her leisure time reading two of her favorite authors, Delderfield and Pilcher. Class reunion organizer for her class, she lives at 4053 S.W. Patrick Place, Portland, OR 97201.

**1933**

**Margaret Ingram Shute** writes that she is enjoying her four grandchildren - two girls and two boys. Margaret is also active in her church and Eastern Star.

Her current address is 4516 N.W. 18th Ave., Camas, WA 98607.

**1934**

**Ruth A'Court Simmonds Tun-turi** started at St. Helens Hall in 1924 and continued until graduation in 1934. After college she worked as women's editor at the Oregon Journal and then, except for a brief stint as a personnel consultant in the 60's, was a home maker. Ruth has been an active volunteer at a local thrift shop since 1965. Widowed since last year, she lives at 2630 S.W. Georgian Place, Portland, OR 97201-1726.

**1936 JC**

**Doris Lincoln Trepp** describes herself as a "professional volunteer" after a career in advertising, public relations and trade journalism. She credits her choice of career to Gertrude Fariss who "gave me a wonderful background." Doris enjoys bridge, traveling, swimming and gardening. Her current address is 4845 N.E. 44th, Seattle, WA 98105.

A retired lawyer, **Jane Logan Edwards** writes that she enjoys golf, bridge and gardening. Her recent travels have taken her to Ireland and Scotland. She remembers teachers Eva Marston and Alice Bahrs who had "a sense of humor, a gentle manner and time to listen to each and every student." Jane and her husband live at 8470 Horseshoe Hill Rd., Loomis, CA 95650.

For the past 14 years, **Patricia Kellogg Roberts** has been volunteering with an adult class for the blind. She and her husband raise sheep; she spins and weaves their wool. Her other interests are gardening and reading. Her address is P.O. Box 301, Newcastle, CA 95658.

**1937 JC**

Traveling to Europe, China, South Africa and parts of the U.S. (including driving across Canada) have kept **Josephine McPherson Hicks** and her husband busy. They also both play golf and like to read. Mr. and Mrs. Hicks live at 644 Salem Heights Ave. So., Salem, OR 97302.

**1939 JC**

For 15 years, **Jane Merriman Gilpin** has tape recorded textbooks for blind college students. She is active in the P.E.O. Sisterhood, sings in the church choir and enjoys reading, knitting and traveling (especially to England, where her daughter

lives.) Jane has four children and one grandson. Her current address is 11144 S.W. Collina A Ave., Portland, OR 97219.

**1940 JC**

Both **Marjorie Besson Fintz** and her husband enjoy gardening and traveling. They have four children and four grandchildren. Their address is 1449 Montecito Dr., Los Angeles, CA 90031.

**1941**

**Agnes Hansen Graves** writes that she enjoys spending her leisure time cooking, reading, traveling, playing cards and studying genealogy. Chosen as "Woman of the Year" by her church, Agnes and her husband Richard live at 5511 Michael Way, Sacramento, CA 95822.

Bicycling, swimming, playing cards and embroidering are chief hobbies of **AnnaBelle Hansen Schutter**. She and her husband Aksel have also traveled to the Scandinavian countries as well as Russia, Germany, England, New Zealand and Australia. The Schutters live at 2646 47th Ave., San Francisco, CA 94116.

**M. Jenelyn Gaston Wessler** became a forest farmer in 1984 after she retired as adjunct professor at the theological seminary. She writes that she is "working on and learning from the land." She also works in her studio drawing, painting, and sculpting. Since high school, Jenelyn says that she has "learned to appreciate change, new paradigms and living on the boundary." She continues that the greatest honor she has realized is the opportunity to team-teach with her husband Daniel at workshops, retreats and in the academic setting as well as co-author a book. The Wesslers live at 11800 Hwy.99 South, Ashland, OR 97520.

**Mary Sumner Jackson** is a volunteer teacher at a local preschool program for the handicapped. She writes that she enjoys life, good health and many friends, some from first grade! Mary's current address is 4502 Kingsway, Anacortes, WA 98221.

**Mary Sullivan Gendron** enjoys traveling, gardening (especially roses) and reading. Her many travels have taken her throughout Europe, except Germany, she writes. Mother of three and grandmother of two, she lives at 1280 Encino Drive, San Marino, CA 91108.

**Jean Morrison Corrigan** joined classmates **Katherine Robinson Henshaw, Mary**

**Sumner Jackson, Patricia Crockett McCoy, Jenelyn Gaston Wessler, Connie Maguire Wilson and Rhoda Thurm Zobrist** as they participated in the OES graduation ceremonies with the Class of 1991 at Trinity Church this June. Jean, who attended St. Helens Hall from grade 1 through 12, remembers a favorite teacher - Jo Waffle - who "made literature exciting and encouraged us to use our imaginations." Jean and her husband James live at 721 Crest Drive, Encinitas, CA 92024.

**Rhoda Thurm Zobrist** is a retired kindergarten teacher. She writes that she is busier now than when she was teaching. She was nominated outstanding local member of Delta Zeta Sorority this year, enabling her to enter the national competition. Rhoda also was on the preschool faculty at St. Helens Hall from 1946 to 1951. Her address is West 1109 21st, Spokane, WA 99203.

**Connie Maguire Wilson** remembers "Sister Superior scolding us and saying, 'remember who you are and what you represent!'" Another "lifer," Connie went through 12 grades at St. Helens Hall. In her leisure time, she enjoys being outdoors, gardening and reading. Her address is P.O. Box 1023, Brookings, OR 97415.

## 1941 JC

**Elizabeth Arnreiter Franklin** writes that she and her husband Frank celebrated their 50th anniversary in August. They both enjoy walking and attending the symphony, plays and the opera. Elizabeth's special interests are painting and writing children's stories. A volunteer for her church and the symphony, she lives at 1845 E. Chula Vista, Tucson, AZ 85718.

**Gertrude Kay Kaiser** and her husband Duane are co-owners of a Christmas tree farm. She is also active in her church and helps at the local food bank. She enjoys fishing with her family and going to Washington State University football games. Gertrude's address is 4802 180th St. E., Tacoma, WA 98446.

**Audra Haffenden Braun** was co-chair for this year's Alumni Reunion Weekend. She and classmates **Mary Butler Bright** and **Dorothy Lilly Nestelle** participated in graduation ceremonies at Trinity Church with the Class of 1991. Audra is bookkeeper and partner in a Christmas tree farm which her youngest son manages. She also volunteers at her county's social services department. Grand-

mother of three, Audra lives at 19509 S. Mosier Rd., Oregon City, OR 97045.

**Mary Butler Bright** was reunion co-organizer for her class who celebrated their 50th this year. Prior to her retirement in 1986, she worked in the Oregon State Dept. of Environmental Quality. Mother of two daughters, Mary enjoys golf, gardening and working on her family tree. Her address is 8802 S.W. Cashmur Ln., Portland, OR 97225.

**Muriel Eddy McBee** was the other reunion co-organizer for the class of '41. She volunteers at a local hospital and is a member of a women's club and the Daughters of the Nile. She enjoys reading, swimming, travel and playing handbells in her church choir. Muriel remembers Dr. Alice Bahrs, a favorite teacher, as "very down-to-earth and comfortable." Muriel's address is 2120 Robins Lane S.E. #74, Salem, OR 97306.

Travel has been part of **Yoshi Yoshizawa Hosokawa's** life for the past three years. In June, she went to the Orient, last summer to the Netherlands and before that to Spain. Besides traveling, Yoshi enjoys music, golf, bridge and reading. She and her husband Robert have two children and three grandchildren. Yoshi's address is 905 Augusta National Blvd., Winter Springs, FL 32708.

Keeping up with six grandsons is part of **Doris Stein Young's** busy life. She also enjoys traveling (to Germany, Austria, Italy), knitting, walking, swimming and seeing lifelong friends. Doris writes that she and her husband Oglesby have been married 47 years and that she enjoys being an "ordinary housewife with talent to raise 3 'very' successful children." Doris lives at 17485 S. Viewpoint Lane, Lake Oswego, OR 97034.

**Dorothy Lilly Nestelle** writes that she remembers fondly being chosen the first "Girl of the Month" by the Angelas and that she enjoyed classes taught by Dr. Bahrs and Rita York. Currently a volunteer for a local radio station, Dorothy lives at 2525 N.E. 61st Ave., Portland, OR 97213.

**Dorothy Calderwood Petrequin** has been a 4-H leader for 15 years. She enjoys traveling in her trailer to parts of the West and Midwest as well as packing trips into the Willows. Her current address is 2133 N.W. Lester Ave., Corvallis, OR 97330.

**Beverly Nordean McColloch**, a retired high school counselor, is now volunteer coordinator for

a hospice house in her hometown. She and her husband Charles have traveled to Southeast Asia, the Panama Canal and parts of Europe. Beverly has also taken classes in Hawaiian, quilting, watercolor and hospice volunteer training. Her current address is P.O. Box 3059, Waikoloa, HI 96743.

**Margaret Allen Wind** has had many positions in her nursing career, including being a nurse at OES from 1968 to 1972. She now lives at 709 N.W. 20th, Portland, OR 97209.

## 1946

**Mary Lou LaChapelle Doyle** retired from The Boeing Company in 1988 after being a Proposal Development Manager for 25 years. Since retirement, she enjoys golf, needlepoint design, painting and volunteering at a local museum. She and her husband Charles have one daughter and two grandsons. The Doyles live at 13613 So. 37th St., Phoenix, AZ 85044 (Oct-April) and at E 1070 Vine Maple Ln., Union, WA 98592 (May-September).

**Donna Dustin Courtney** enjoys sailing, cross country skiing, cycling and going to the symphony. In remembering her favorite teacher, she writes of Father Wolcott who "made history come alive, had a great sense of humor and was very tolerant of silly girls." Donna, an executive secretary for a local school district, lives at 1508 N. Irvine St., McMinnville, OR 97128.

Currently a student at Mt. Angel Seminary, **Patricia Brock Miller** writes that she has the privilege of participating in the national prayer breakfast movement and traveling extensively with a national speaker and teacher of that movement. She and her husband Ernest live at 606 Salem Heights Ave., Salem, OR 97302.

**Carla Rebagliati Black** has traveled to China, Peru, Turkey, Egypt, Italy and Scotland. She writes that she has lived in the same home since 1970. Owner and president of The Badge Company, she and her husband Noel live at 7100 Ada Dr., S.E., Grand Rapids, MI 49546.

**Barbara Henton Marontate** traveled around the world last year. Besides traveling, she enjoys golf and tennis. Mother of two girls, Barbara's address is P.O. Box 346, Forest Grove, OR 97116.

## 1946 JC

A retired high school art teacher, **Georgeanna Adam Spencer** enjoys doing family research, studying watercolor, reading and visiting with friends. Her current address is 2414 Gales Way, Forest Grove, OR 97116.

## 1949

**Mary Lou Rose Johnson** is a counselor at the St. Anthony Foundation in San Francisco. She encourages her classmates to write her at 1769 Toyon Drive, Concord, CA 94520.

**Bonnie Dunbar Hahn** writes that in 1988, she was part of a group who sailed through the Northwest Passage in Canada. Their boat was the 37th to ever get through the Passage -and the only yacht to make it through! Bonnie's current address is Box 392, Nome, AK 99762.

## 1951

**Martha Stearns Mulholland** enjoys gardening, quilting, reading and handwork. As evidence of her quilting expertise, she exhibited a log cabin quilt at the alumni art exhibit during Alumni Weekend. Martha was also her class reunion leader and hosted a late afternoon buffet at her home for her classmates. A retired resource specialist in special education and mother of four daughters, Martha lives at 1320 N.W. Susbauer, Cornelius, OR 97113.

**Nancy Lee Smith** enjoys collecting and researching West African Art, old master prints and 18th & 19th century prints as well as American and English decorative arts. She recently traveled to Turkey. She remembers Irene Campbell, Latin teacher, as her favorite because she was "intelligent, experienced and professional." Nancy's current address is 2058 Vallejo, San Francisco, CA 94123.

**Nancy Fisher Harrison** writes that for most of the past 40 years she's been a wife, homemaker, mother of two and community volunteer. She enjoys photography and antiques. She and her husband of 35 years Eugene live at 4358 Alderbrook S.E., Salem, OR 97302.

**Beverly Kleist Vogel** has lived in many countries because of her husband's military career. She has been president of the Association of Retired Enlisted Wives for three years and was chosen Military Wife of the Year in 1974. She and her husband Vern live at 10716 110th St. S.W., Tacoma, WA 98498.

**Anne Cannon Nixon** received her pilot's license in 1983. She belongs to a flight association which flies to small Mexican towns needing care. Most of the time, however, she and her husband Don travel the U.S. and Canada in their RV and have co-authored a book on full-time RV'ing now being considered for publication. Classmates can reach Anne c/o 436 Walcott St., Paris, IL 61944.

Currently a physician in private practice specializing in geriatrics, **June Dunbar Phillips** enjoys hiking, fishing, water skiing and snow skiing. She was honored as Soroptimist Woman of Distinction and last year was chosen one of ten outstanding women of Monterey (CA) County. The mother of three boys, June and her husband John live at 6 Mesa Del Sol, Salinas, CA 93908.

A part-time Spanish/English instructor at Berlitz, **Caroline Kuhn Meehan** enjoys bridge, reading, sewing, painting and "watching the antics" of her grandchildren. She remembers her favorite teacher, Mrs. Stern, as a "talented violinist who planted the seeds for a love of classical music." Caroline and her husband Carl live at 761-201 Bishops Park Dr., Raleigh, NC 27605.

**Marilyn Bernstein Fulop** spends her leisure time playing golf. Mother of two daughters and grandmother of five, Marilyn and her husband Joe split their time between the Oregon Coast and Palm Desert, California. You can reach Marilyn at 939 Ocean Ct., P.O. Box 2700, Gearhart, OR 97138 (from May 15-Oct. 15) or 60 Camino Arroyo Place, Palm Desert, CA 92260 (from Oct. 15-May 15).

**Floy-Louise von Groenewald Senior** writes that she is a retired school guidance counselor, who served as department chair for 17 years. She is active in her church as vestry clerk, choir member and lector. Her other leisure-time activities include reading, playing the piano, singing, needlepoint, travel, photography, exercising and her grandchildren. Her current address is 33231 Meadow Mountain Road, Evergreen, CO 80439-9730.

## 1956

Recently elected as state president of the California School Employees Association, **Nancy Glover Brasmer** enjoys volunteering in political campaigns, reading and lay reading. She credits her interest in volunteerism to her favorite

teacher, Elizabeth Johnson, who "got me started in my life adventure of volunteerism." She received recognition as Outstanding Junior Woman of the Year from 1971 through 1974. Nancy lives at 15760 Cottage Ave., Manteca, CA 95336.

**Joanne Ehrlich Austin** writes that she is a certified track and field coach for Special Olympics. She also enjoys gardening, cooking, sewing and garage sales. Joanne keeps busy playing the piano and spending time with her two children and five grandchildren. Her address is 9643 S.E. Tenino Ct., Portland, OR 97266.

**Susan Dodge Moore** is a retired elementary school teacher. She spends her leisure time teaching calligraphy, paper marbling and other art classes. She writes that she's "loving retirement after 28 years of teaching!" Susan's address is 1022 Jasmine St., Redlands, CA 92374.

**Nancy Mooers Holman** enjoys travel, gardening, hiking, golf and being with her family. She traveled to Estonia with a choral group for a music festival in late June. Part of her trip included visits to Leningrad, Moscow and Kiev for concerts. Nancy's current address is 1906 N.W. 29th, Portland, OR 97210.

## 1966

**Susan Marston Bishop** is currently taking graduate courses to complete her Masters in Education with a specialization in learning disabilities from Cleveland State University. As a learning disabilities tutor for the Cleveland Public Schools, Susan travels throughout the district to different schools. Besides teaching, she enjoys swimming, playing golf, gardening and reading. Susan and her husband Peter reside at 3948 W 143rd St., Cleveland OH 44111.

**Diana Beebe Buchanan** currently serves on the OES Alumni Board as Secretary/Treasurer. She also tutors children in Reading and Language Arts. Diana and her husband Bryce have 2 daughters, 12 and 18. Diana's favorite teacher was Carolyn Collett because, "even after 25 years, she is still the most interesting woman I have known in my life."

**Georgiana Calley Antonelli** is currently Senior Vice President of Lafayette Bank and Trust Co. in Connecticut. She has had several articles published in the The American Banking Assoc. Journal highlighting her Teller

Training Program. She and her husband Michael have 2 children, Nicole, who attends Purdue and Michael who will enter college this fall.

After nine years in the OES Alumni Office, **Katherine Karafotias** bid good-bye to her co-workers at a luncheon in her honor. Kathy plans to take a short break from working and begin a new phase of her life.

## 1971

In September, **Kathryn "Kathy" Reynolds Janssen** became a partner in the law firm of Lane, Powell, Spears and Lubersky in La Canada, CA. Recently, she travelled throughout Europe by bicycle. She and her husband Larry can be contacted at 3627 Karen Sue Lane, La Canada, CA 91011.

After 12 years in New Mexico, **Ann Foland** is back in Portland. She is currently a faculty member at Portland Community College. Ann enjoys camping, fishing, writing, guitar and is involved in Greenpeace.

## 1971 BDH

**Amrit Atma Singh Khalsa (nee Randall Bruss)** is an Architect residing in Los Angeles with his wife Maha Raj Kaur Khalsa and daughter, Sarah McKenzie, 9 1/2. Amrit enjoys spending time with his family, painting, print making and carving. He also tries to keep in touch with former faculty members including, Elsa Warnick, John Hicks and Robert Ross.

A Field Production Photographer for KPTV, **Martin Landeen** remembers the education and wonderful experiences that Roger Nelson provided for him. "Roger agreed to be my advisor for Independent Study in photography. I'll never forget his commitment." Martin, his wife Janet and step-daughter, Jessie (12), live in Canby.

**Chris Karafotias** has returned to college to complete his degree and pursue a second degree in Meteorology at the University of Utah. During the summer, Kris returned to Portland and served as a student trainee at the National Weather Service.

## 1972 BDH

The Seattle Repertory Theatre is pleased to announce the appointment of **M. Mark Bocek** as Public Relations Manager for the nonprofit professional theatre. Mark received his M.A.

in Dramatic Arts from the University of California Berkeley. He returned to the Northwest six years ago and now resides on Queen Anne Hill in Seattle.

## 1974

After working as a flight attendant for eight years, **Holly Parker Ande** writes that her most demanding job now is that of being a "full time Mom" to five-year-old Hunter and three-year-old Nicole. She also keeps busy with two homes, one in Florida and one in North Carolina. Holly enjoys swimming, boating, fishing, gardening, weight training and traveling. Her current address is 3511 S. Flagler Drive, W. Palm Beach, FL 33405.

## 1976

**Elizabeth Pope Melone** sent the Alumni Office an "All About You" card which gave us her new address. She and husband David now live at 14 Idalia Court, San Anselmo, CA 94960.

**Amy Joseph Pederson** is an Attorney with Tonkon, Torp, Marmaduke and Booth. She and her husband John have a daughter, Elizabeth Lyle, who was born in February. When not taking care of the baby, Amy enjoys gardening, jam and jelly making and travelling.

**Richard Zurow** writes from Lenexa, Kansas that he is currently the Executive Director of the Jewish Community Foundation. Richard has two children - Evan, 5 1/2 and Emily, 3. He enjoys being with his family, reading stories, playing games and exploring. Although he is happy in Kansas, someday he hopes to return to Portland.

**Perri Ann Combs-Taber** and her husband Jon live in Walnut Creek, CA with their year old daughter, Isbeau. As well as being a mother, Perri is also the Owner and Riding Instructor at the Flying Horse Equestrian Services. Most recently, the family traveled to Idaho and back through the Sierras camping along the way.

As manager of Oregon State Universities Extension Service, **Virginia Thompson** was been recognized with the OES Extension Service New Staff Award. She and her husband Tom live in Salem and have 2 daughters, 8 and 6.

## 1977

**Scott Egan** traveled to Saudi Arabia during Operation Desert Storm as an advisor to the U.S.

Army. Upon his return to the states, he moved to Kansas with his wife Mary Ann and year old son, Scooter. Scott would like to hear from classmates at his new address -P.O. Box 2534, Ft. Riley, KS 60442.

If anyone is interested in a trip to Fiji, **Eric Kobbe** is the person to contact. He writes that last July he traveled to Fiji, met and married his new wife, Eniwas, in September and returned home in October. A partner in a small resort there, he currently lives at 19735 SW Farmington Rd., Aloha, OR 97007.

## 1981

**Bonnie Potts Shorin** and her husband Joe are enjoying their new 10-acre home in the woods of Washington. Bonnie is a Legal Liaison and Environmental Planner for the Dept. of Ecology while her husband is an Assistant Attorney General in Olympia. Their new address is 5815 Offut Lake Rd. S.E., Tenino, WA 98589.

**Alexander Lingas**, who graduated from OES as an eighth grader in 1977, is currently working on his Ph.D. in Byzantine Music at the University of British Columbia. In April 1991, he directed an a capella choral group in a concert of Byzantine chant and Medieval and Renaissance polyphony. Proceeds from this concert benefited the rebuilding fund of the Orthodox Cathedral in San Francisco, which lost its church building during the October '89 earthquake. Alexander and Ann, his wife of one year, now live at 526 0 S.W. Humphrey Blvd., Portland, OR 97221.

From 1987-1990, **Marleine Hoffman** was Manager of the Merce Cunningham Dance Foundation in New York. "My years at Cunningham kept me on the road 5-7 months out of the year, leading a group of 28 dancers, technicians and administrators." Marleine is planning a career change in the near future, but for now, she is enjoying some leisure time with her husband Marc and cat Spalding.

**Sarah Stephenson** is currently working with a friend to establish the Art School of the Agean in Samos, Greece. The school will be a summer painting/ceramics/sculpture course for students and adults. Sarah works at The Museum of Modern Art in New York as the Education Center Coordinator/Volunteer Coordinator.

After completing her degree in Medicine at the University of Rochester, **Michelle Fromm**

moved to Maine where she works as a Family Medicine Resident at the Maine-Dartmouth Family Practice Residency. Michelle invites anyone from OES who wants to visit Maine to contact her at; RR -1, Box 1498, S. China, ME 04358.

**Constantine Petropoulos** is a Ph.D. student in International Relations at the University of Denver. He will complete his degree in 1992. He and his wife Louise were married July 1990, in Idaho.

**Kathleen Van Every Douglas** is a Family Day Care Provider for Noah's Ark in Wilmington, Delaware. Kathleen and her husband Kenneth have a 2 1/2 year old daughter, Heidi.

**Jenni Cornell's** goal is to become certified in the Montessori teaching method. Currently, she is a self-employed child care provider. Jenni's many interests include movies, reading, golfing, jogging, playing the guitar and flute and traveling.

From Aptos, CA, **Heidi Lulich** writes that she is an Animal Health Technician at the Animal Hospital of Soquel. She tries to partake in all the continuing education courses that she can in Veterinary Medicine. In January, Heidi traveled to several states in the South including Louisiana during Mardi Gras.

**Drue Ferguson** attends Duke University where he is an Instructor and Doctoral candidate in Musicology. In 1988, Drue traveled to Austria and Germany on a DADD Scholarship. In the summer of 1990, he visited Kenya and Egypt.

**Helena Achilles Andrews** is a graduate student at the University of Washington's School of Business. She enjoys restoring her older Seattle home, skiing and spending time with her son, Chris, 1 and husband, John.

**Anna Lisa Fear** and her husband John Goodwin have lived in the Bay area (Oakland) for four years. She is currently a Research Assistant working for a Biotech company doing genetic engineering on bacteria.

**Sean Kuni** serves on the OES Alumni Board as the President Elect. He will take office in the fall of 1992. Sean and his wife **Paige Parker Kuni** '84, are the parents of Kristine, 2. Sean is Vice President of Kuni Cadillac-BMW Inc.

## 1982

**Adrienne Mikeworth-West** and her husband raise and train puppies for Canine Companions for Independence, an organization which provides working dogs for people with physical disabilities. Adrienne, who works at a local medical center lives at 4407 SW Twombly, Portland, OR 97201.

## 1983

**Cynthia Overton Leavoy** and her husband Norm operate a family summer camp on "one of B.C.'s gorgeous islands." Their three-year-old daughter Breanna Elizabeth and their new home also keep them busy. Cynthia would love to hear from her classmates. Her address is 16070 95A Avenue, Surrey, British Columbia, Canada V3R9K1.

## 1986

After spending a year in the military, **Marko Sifrar** is currently a physics student at the University of Yugoslavia. Besides studying, Marko keeps busy coaching basketball and playing chess. He adds that he is also learning Japanese. Marko's address is Reber 3, 61 000 Ljubljana, Yugoslavia.

**Carolyn Harris** is planning to attend graduate school and obtain a Masters in Counseling. She also aspires to get a degree in spiritual direction. As a Home Health Aide, she does therapeutic touch and massage.

**Eric Utz** is a Habilitation Specialist at the Rainbow Adult Living Center. He recommends New Orleans as a great place to visit and spend money!

In 1990, **Lisa Wade** graduated from Pacific Lutheran University in Elementary Education and now is a substitute teacher (K-6 grade) for the Bethel School District in Tacoma.

**Christopher Beardall** is attending Western States Chiropractic College, where he is pursuing a degree in Doctor of Chiropractic. He married Julie Ann Paugh on June 22.

**Winde Bekins** is a Customer Service Representative for American West Airlines in Southern California. She enjoys the freedom her job gives her - allowing her to pursue other interests which include singing, traveling, tennis and weight lifting.

Attending the University of Michigan as a graduate student is **Brian Litzenberger**. He is pursuing a Ph.D. in clinical

psychology and concentrating his thesis work on identity and sibling abuse. He recently traveled to Ithaca, NY to celebrate **Jennifer Sipple's** 23rd birthday.

**Magda Akkerman** is living in Northcote, Victoria, in the country of Australia. She works for the brotherhood of St. Laurence as a child care worker. Her travels include visits to Sydney and Cairns, but she hopes to travel outside of the country in 1992.

**Laura Cook** is a student at the University of Oregon, majoring in Romance Languages. She studied in France in 1988-89 and traveled extensively throughout Europe. Laura's address at school is 1000 Patterson, Box 68-464, Eugene OR 97401.

## 1987

**Mike Sandoz** graduated from the University of the Pacific in May with a degree in Business. He plans to continue his education at Oregon State University in their MBA program this September. He can be contacted at 6115 SW 36th, Portland, OR 97221.

## 1988

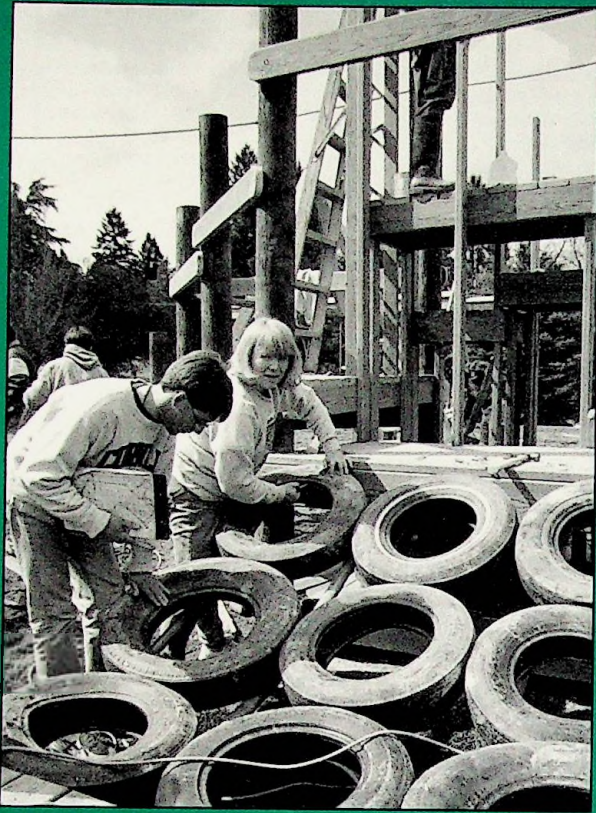
After his year as an ESU exchange student, **Nicholas Wood** returned to England. This summer, he graduated with honors from Bristol University with a B.S. in Chemistry. Nicholas is back in Oregon working on his graduate degree at the University of Oregon where he can be reached at 433 Monroe St., Apt 17, Eugene, OR 97402.

## 1989

**Heather Fleming** spent the past year at the American Institute in Avignon, France as part of the Study Abroad program at the University of San Diego. She was the first undergraduate student to ever be accepted by the University. Heather's home address is HCR 61, Box 78K, Banks, OR 97106.

## 1990

**Chanida Sophonpanich** was placed on the Dean's List at the University of Rochester last spring. Write to her at The University of Rochester, Class of '94, Rochester, NY 14627.



Wow! Is that the pirate ship? OES builds a new playground.  
See page 8.



Snapshots of Graduation 1991 on page 12

# THE OES Belltower

**Oregon Episcopal School**  
6300 S.W. Nicol Road  
Portland, Oregon 97223

Non-Profit  
Organization  
U.S. Postage  
**PAID**  
Permit No. 334  
Portland, Oregon

