

Photographs



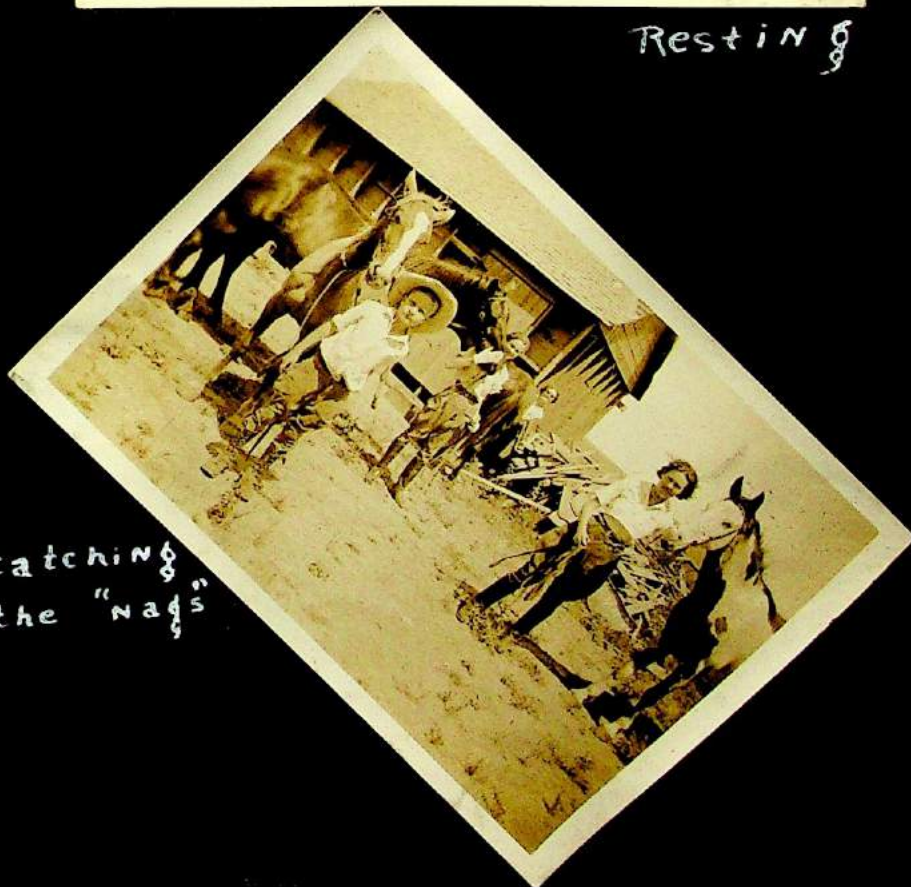
Betty Tubbs
Adams
Oregon



Resting



The tent in which 1932
Party tried to sleep



catching
the "nags"



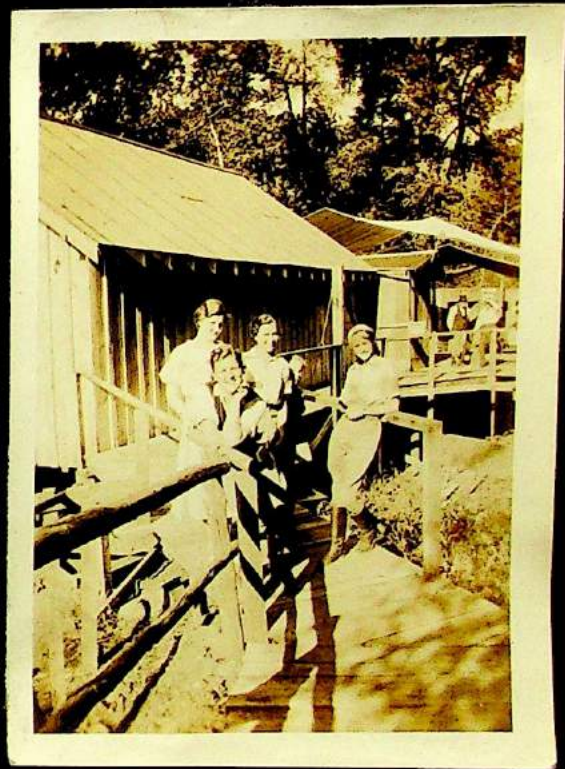
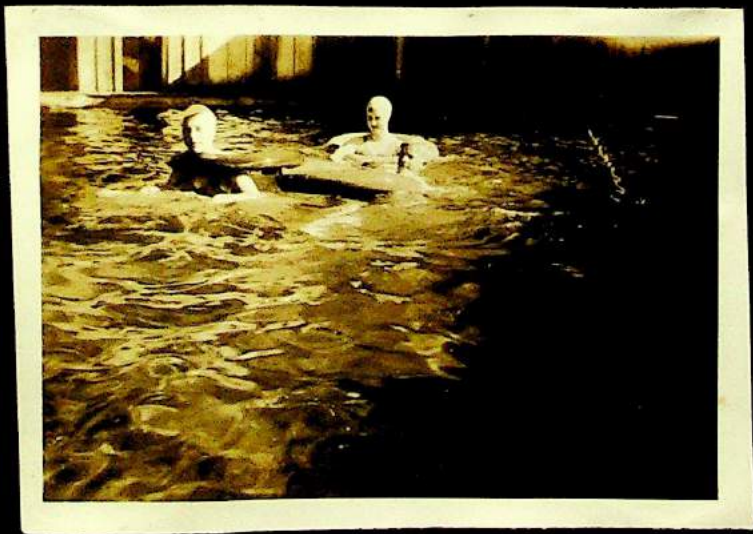
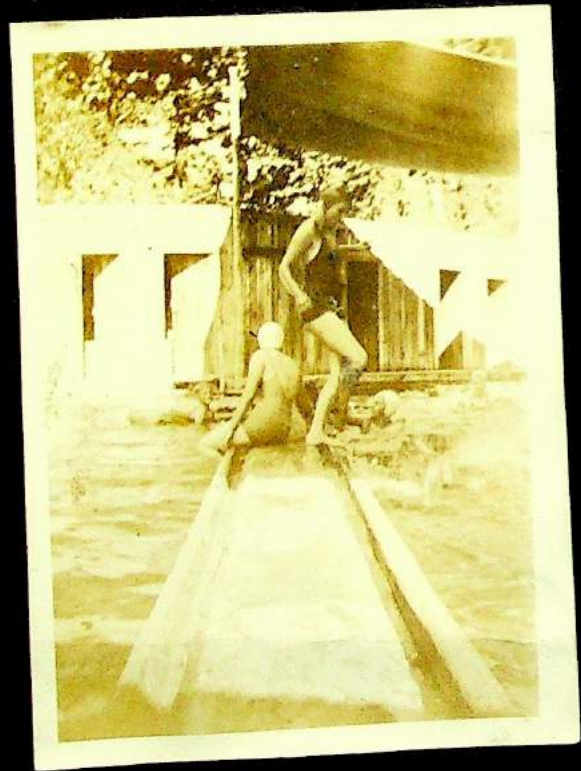
LONE PINE RANCH



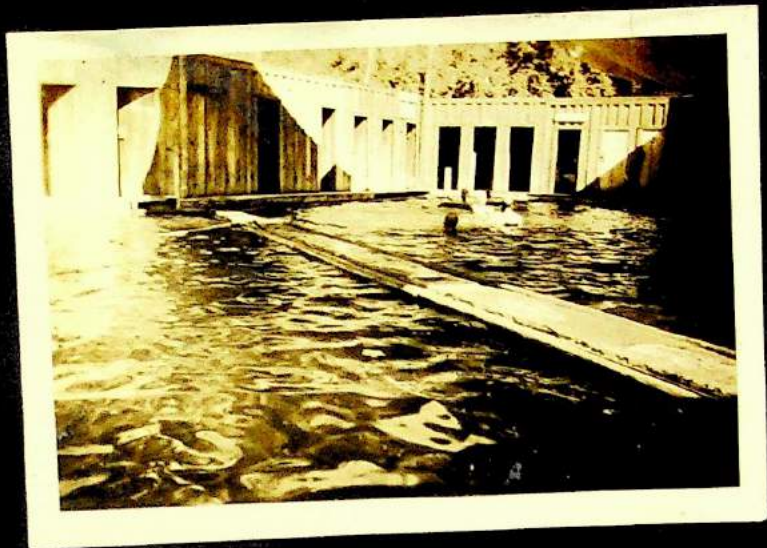


Handwritten text, possibly a date or location, is visible in the dark space between the top-left and top-right photos.



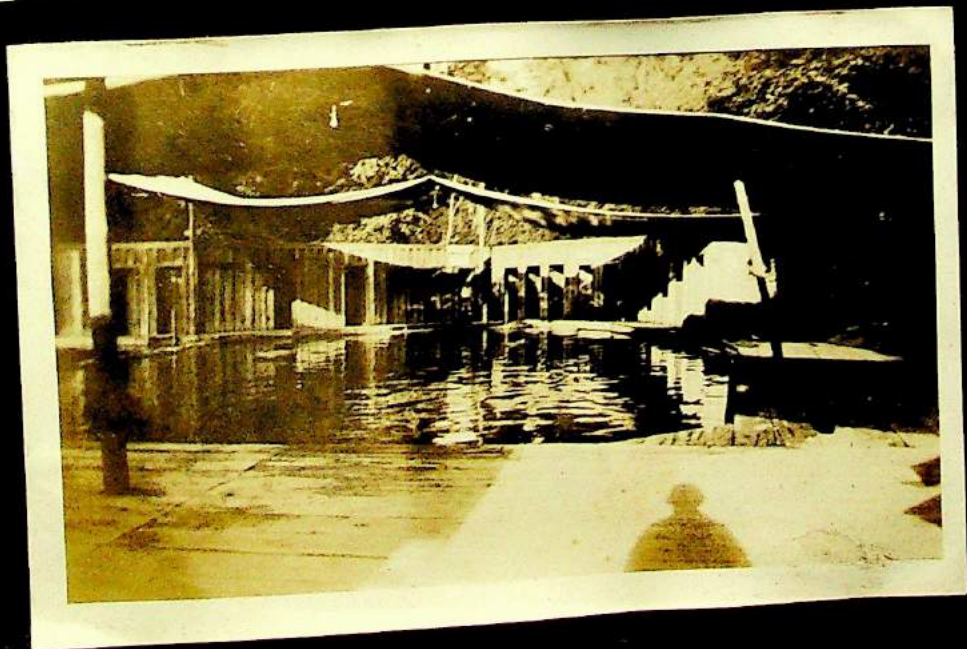


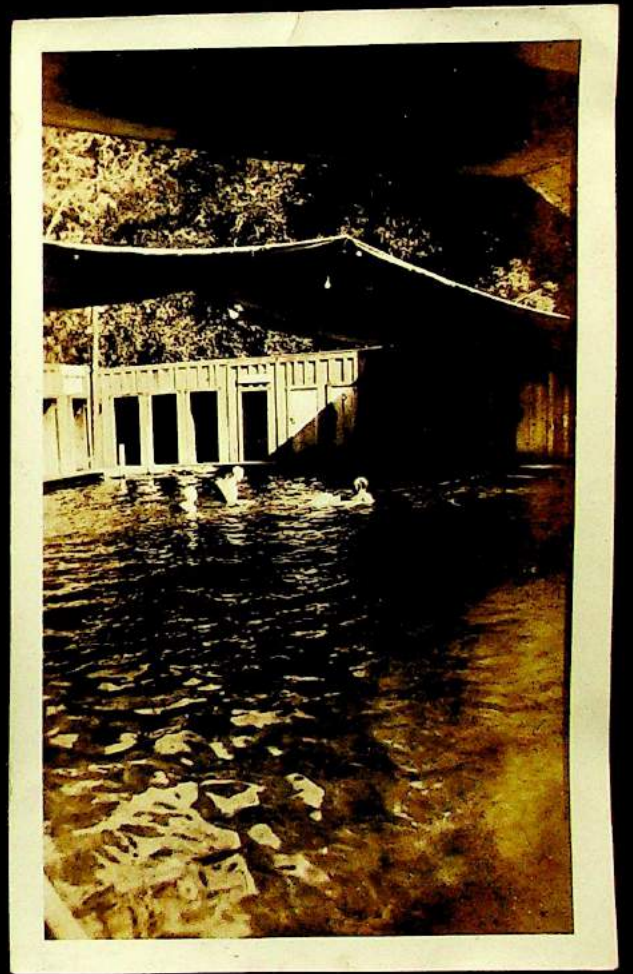
Party at Bingham Springs
1933

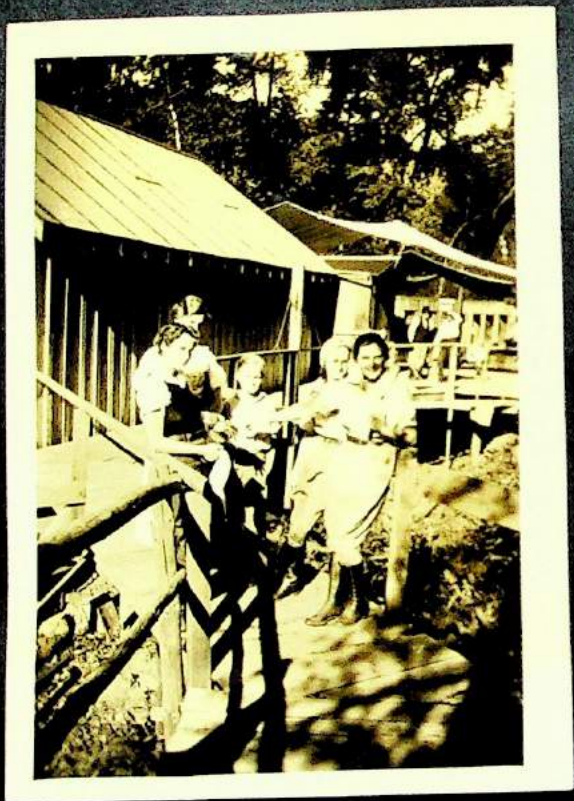


Daddy getting Foxy

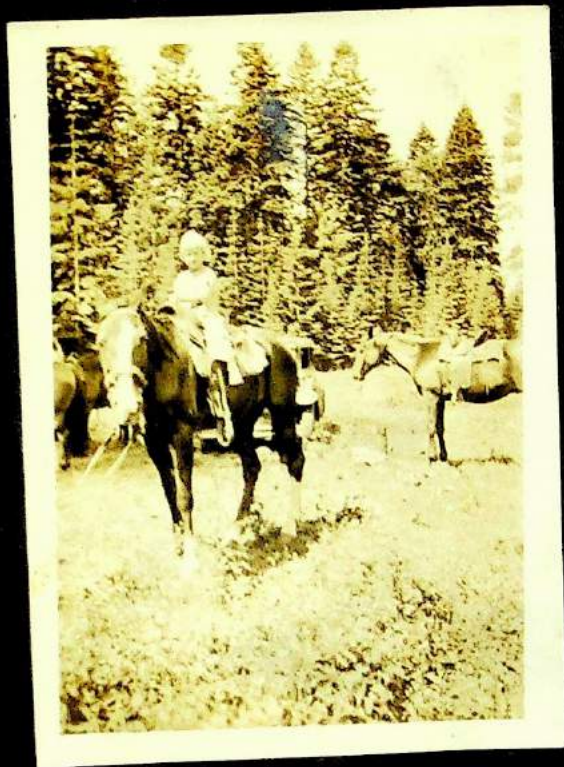
NOV, 1961







A dirty look from
Victor

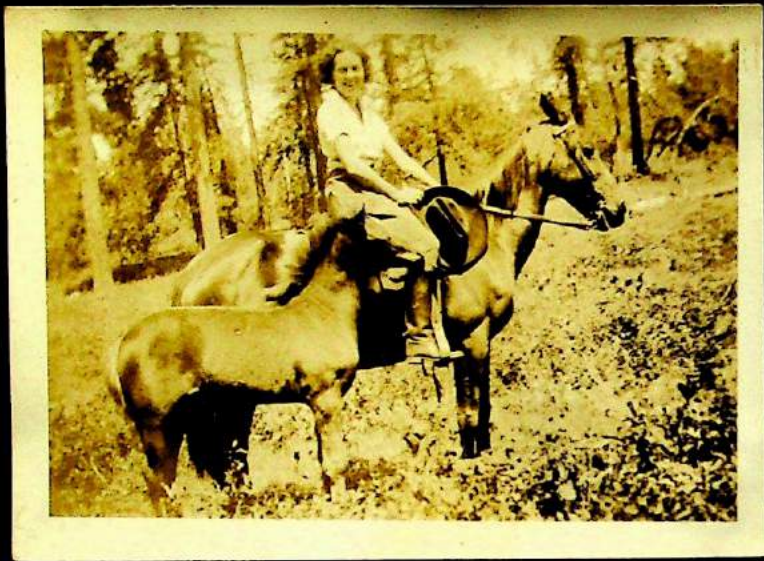




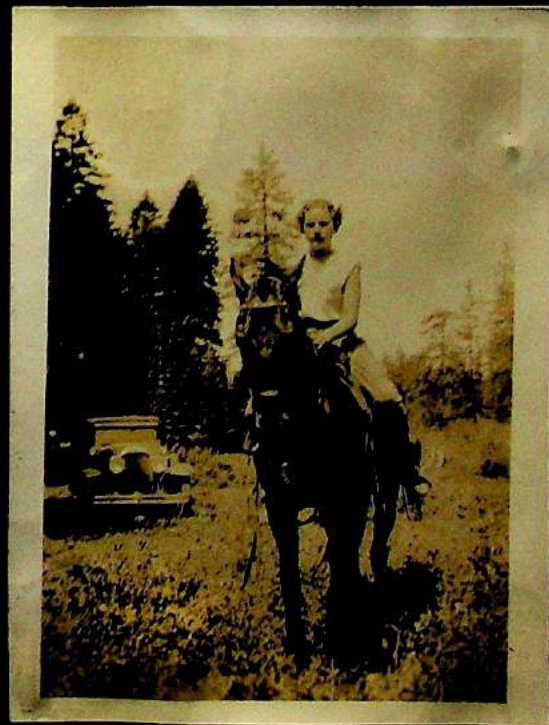
4th of July, 1933
Lunch at Cayuse



Tubbs gals
and New Yorkers



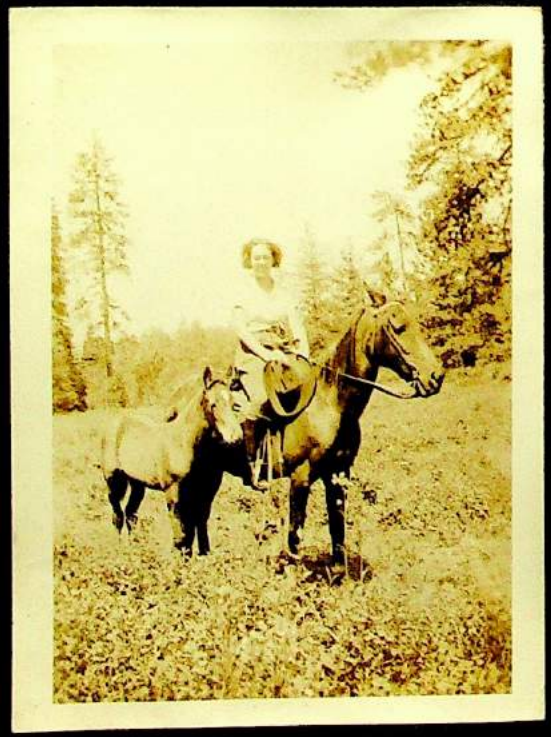
At the cabin - July 1933



Sil
on
sp.



Pep, vim, and vigor





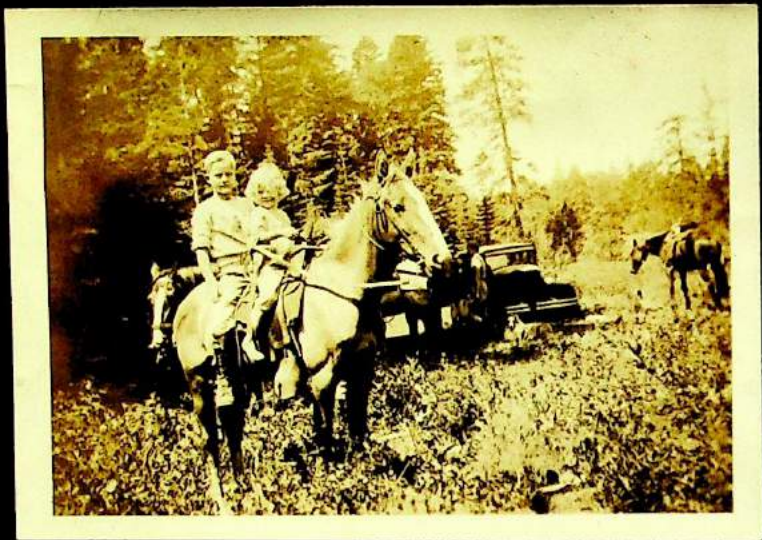
Harvesting - 1933

Betty Lou
"Showing off"

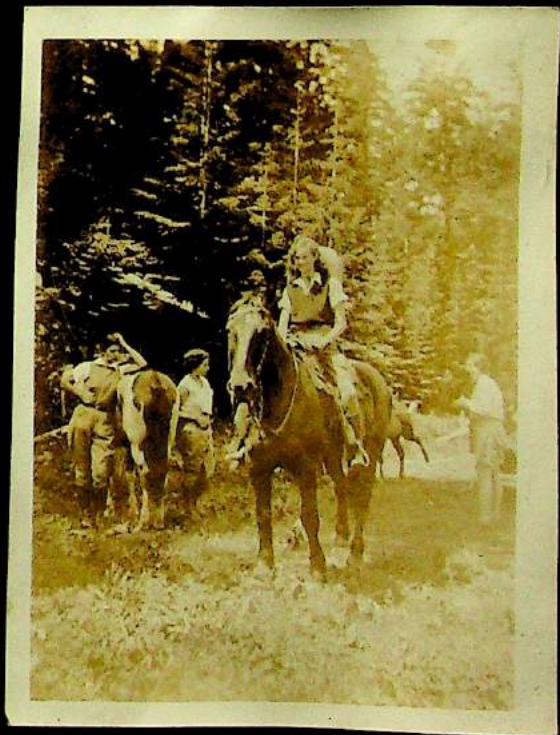
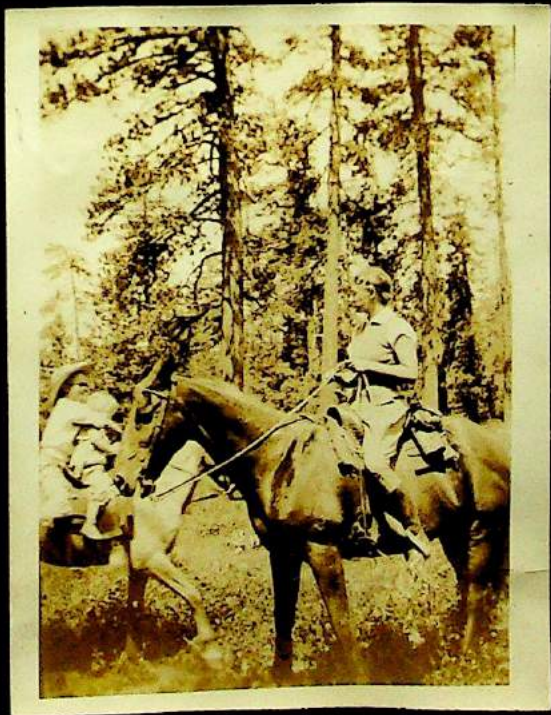


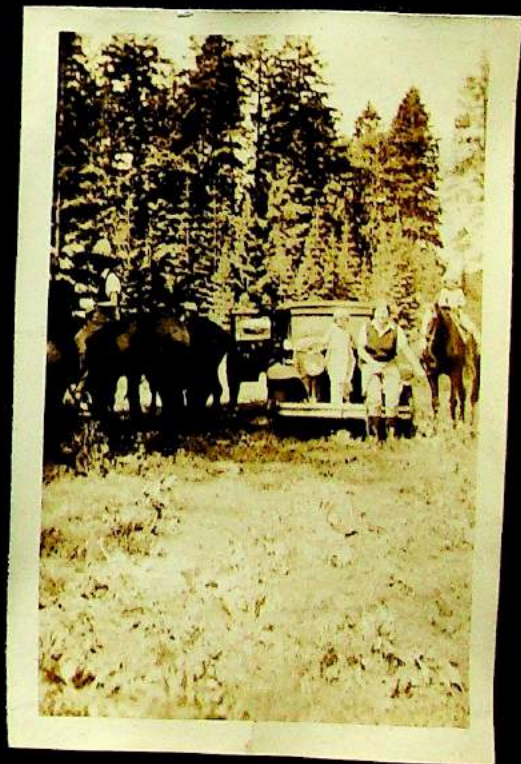
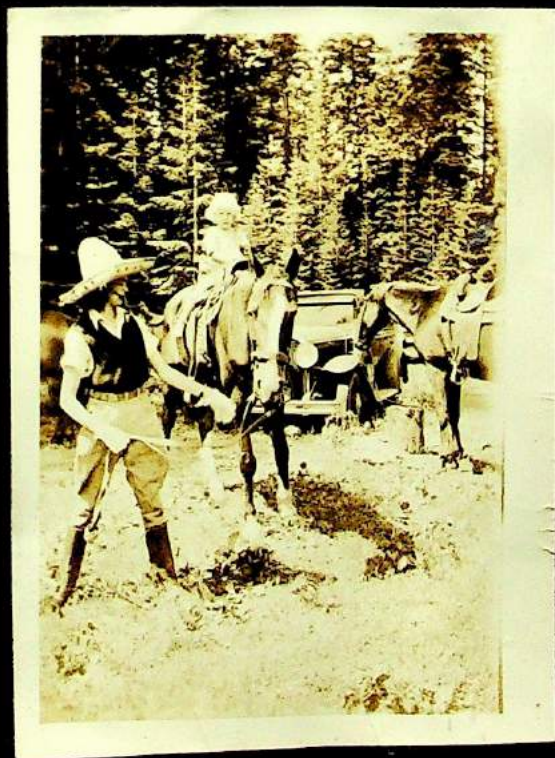
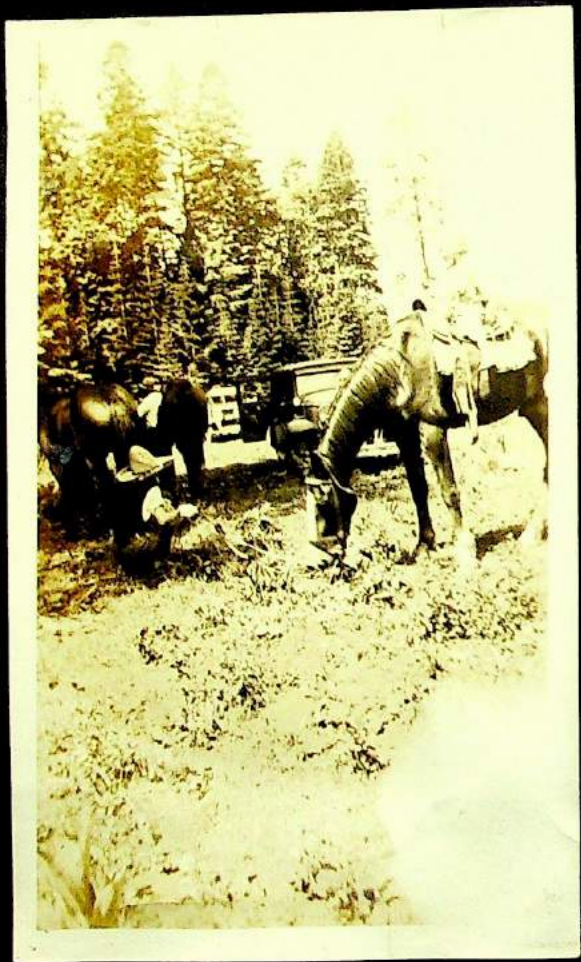
More scenes
taken at the
cabin - 1933





At Meacham Lake - '33





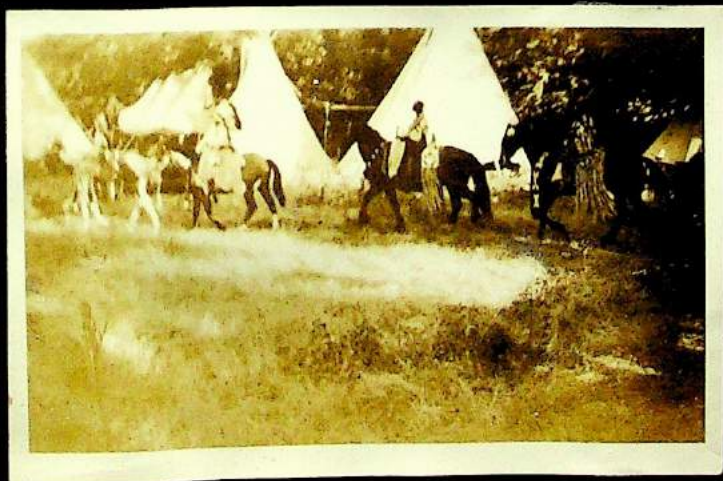
7/4/33 Trip 2



The cabin



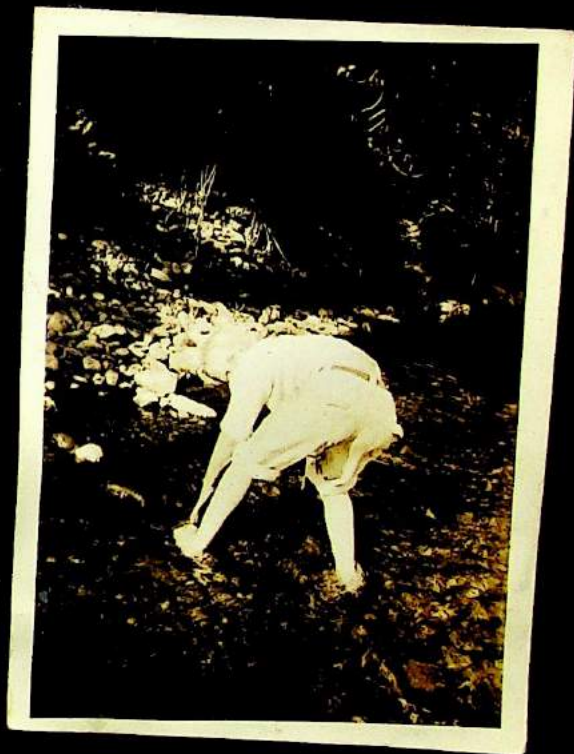
7/4/33 T. J. 2



Pictures all
taken at
Cayuse - July 4th
1933

Indians - Cayuse
7/4/33





HANK, cooling
off his "footsies"



Bridge at Depot Bay













Pat, Betty Baker & I at Depoe Bay
Fall - 1933



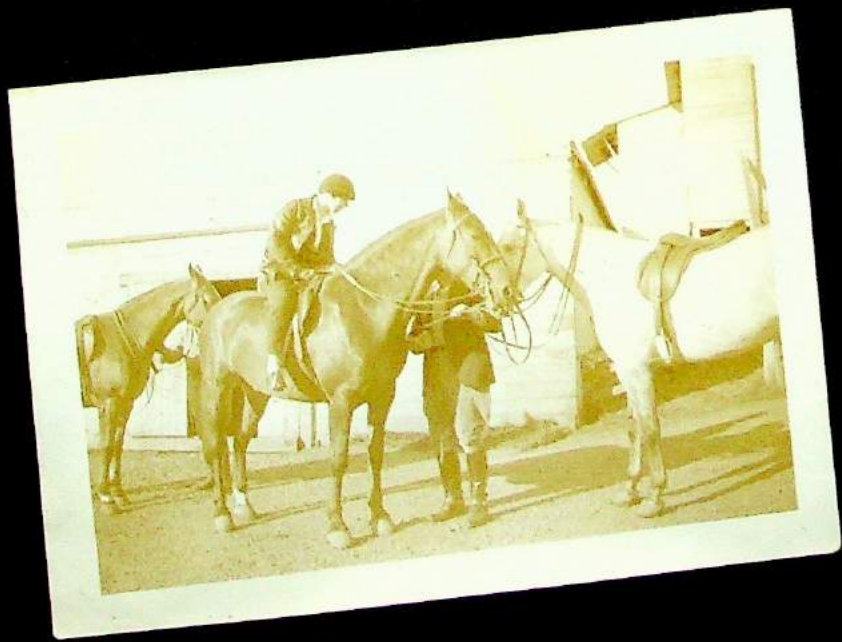
Taken on a trip up the
Highway on the Oregon side as far as
Bridge of the Gods and down on Washington
side to Vancouver - with Pete 1934



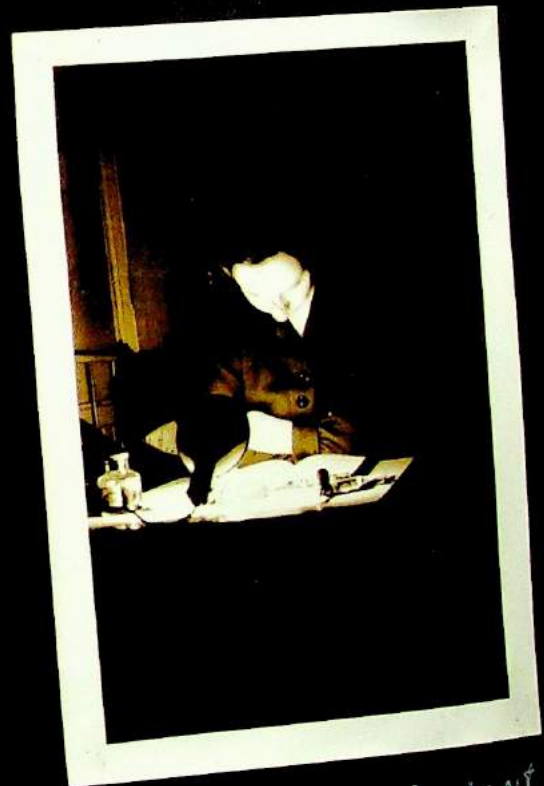
Bonneville fish pond



Alice and Mary



Riding
at Highlands
Out canyon
Road from
Portland



Alice, the student



Various glimpses of college
dorm - 1934





Fire place
at Everglade



Lake Oswego from
above JANZEN ISLAND

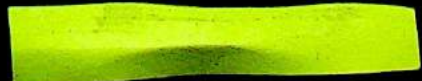


DINING ROOM
table at
Everglade



Dormitory at EVERGLADE







sisters' chapel
at Everglade

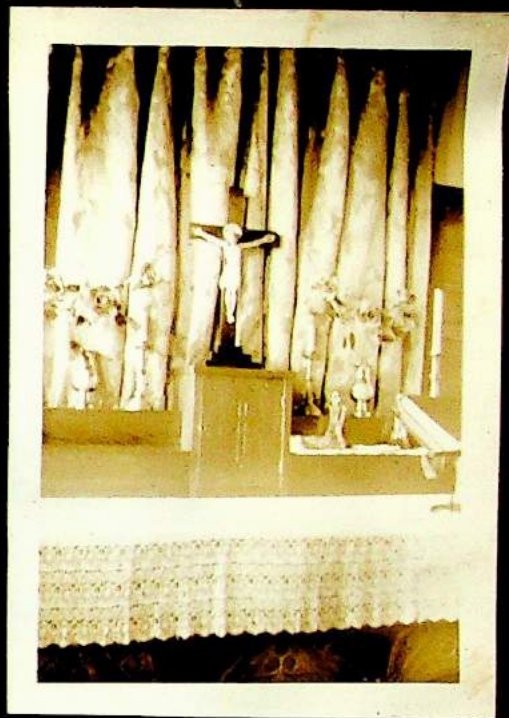


F. Miller
(thinking she
resembles K. Hep)

The



Downstairs
chapel at
Everglade



Downstairs
Chapel

Everglade
Chapels



Upstairs
Chapel



↑ Those Watzeks!



College Library in
ANNEX

Fran & Pete

...



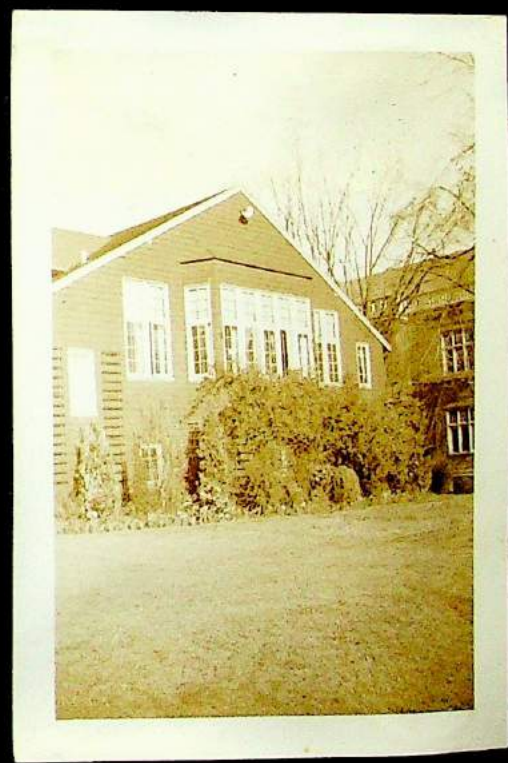
Shoe shining business
on the upward trend
in college dorm



corner of
the Parlor



Front drive
from
Fire escape



Frank & Pete



ANNEX



GYM



College
Library
IN
ANNEX





Upper Hall
St. Helen's Hall



Another view of
college dorm

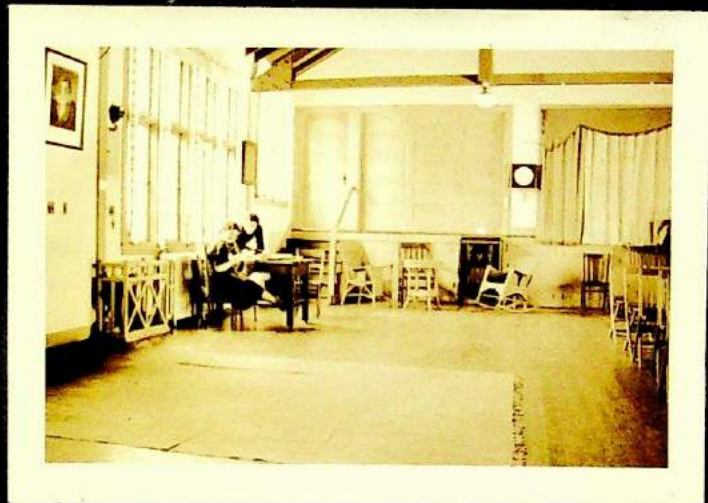


Me, in room of Misses

12



B. JOYNES - P. KARR



Studying in the
ANNEX, which served
as temporary college

I. CROWN - D. ALLEN



building - 1944



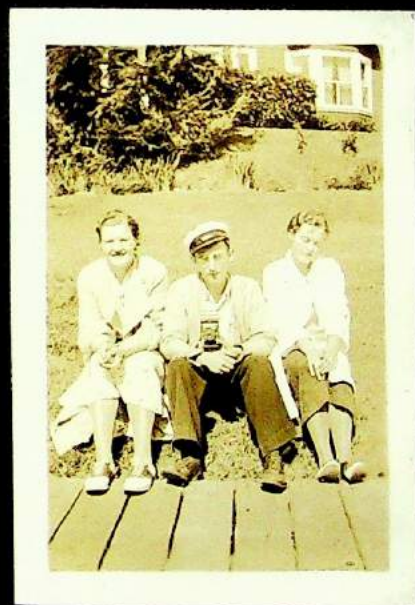
ON Bridge
at Bingham
Springs



Taken ON trip home Spring vacation
March, 1934



Beauties
Unexcelled



A thorn between roses



caught
unawares
by Pete's
camera



A week-end in Wauna
Spring - 1934

Taken

ON trip with
Pete around the
McKENZIE Pass
Spring - 1934



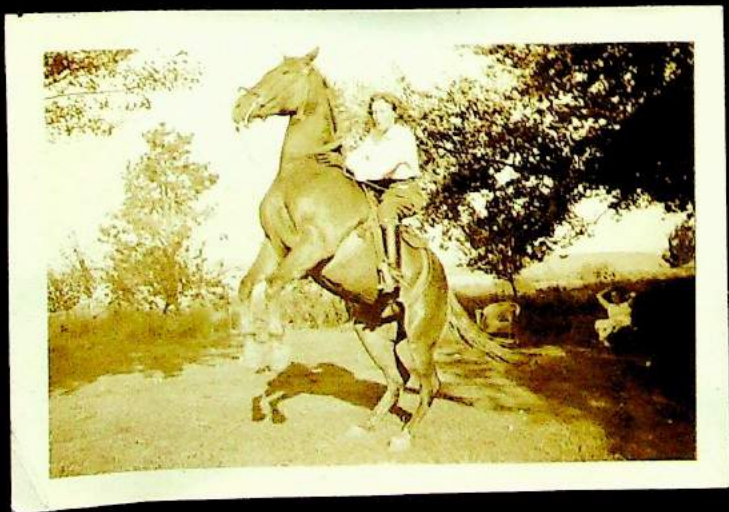
Taken

ON the trail above
Multnomah Falls one
Saturday afternoon
- 1934





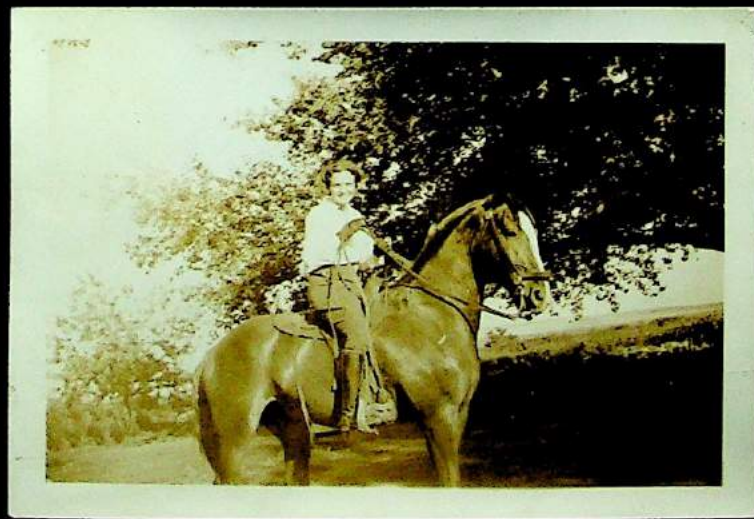
Trying to show Vic off - Summer 1933



Scene west of Portland



Wauna - Spring 1934



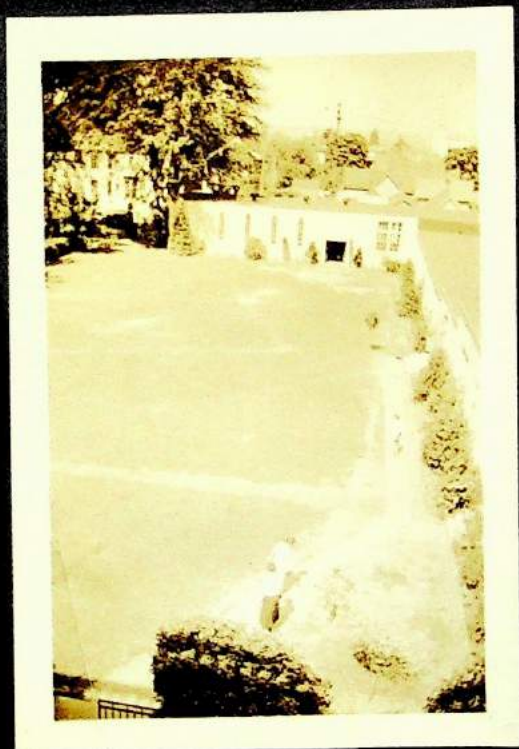
← vic
Summer - 1933

CAMPUS CLEAN-UP DAY - Spring 1934
St. Helen's Hall Junior College

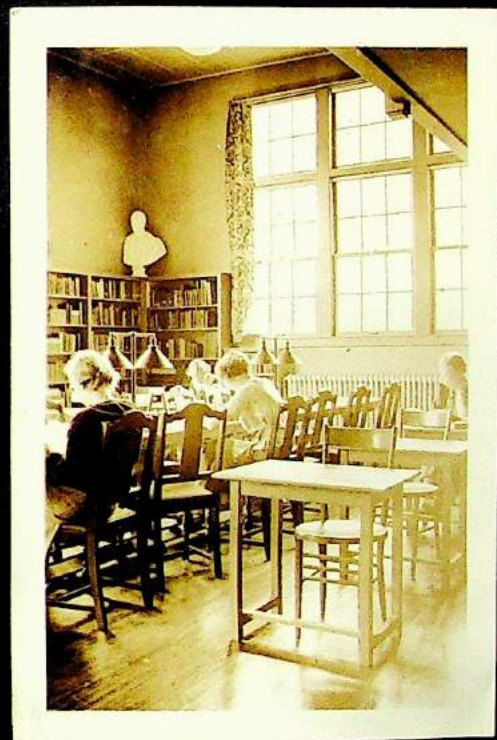




More scenes from
Campus Day - '34



Junior college
building and
campus -

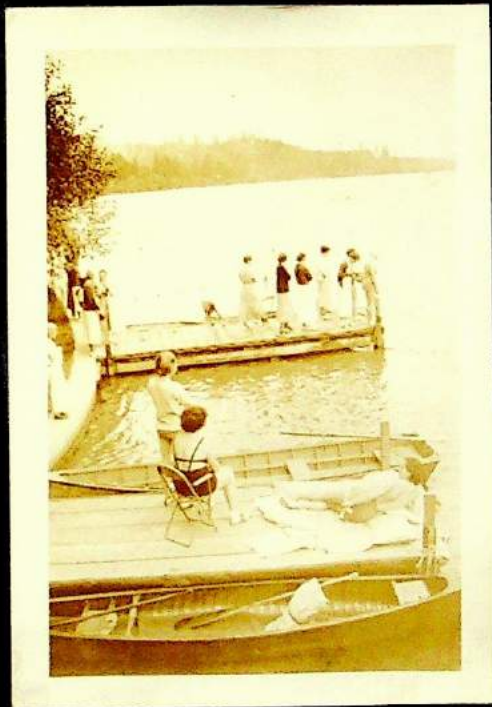


Corner of the
S.H.K.J.C. Library
1934

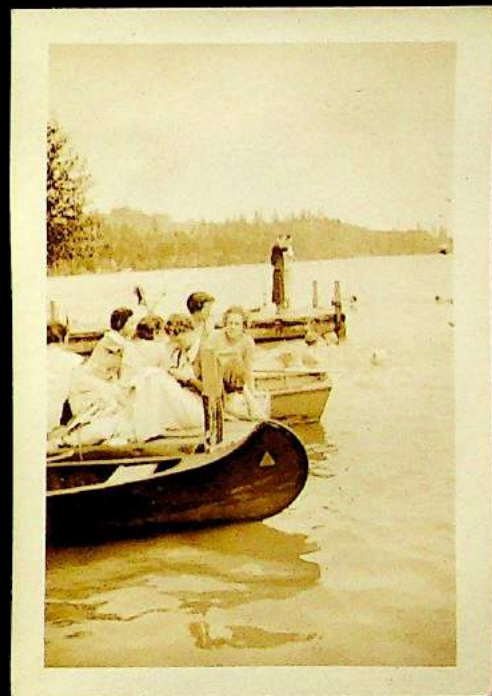
Freshman J.C. party at Everglade
Spring 1934



The lawn, lounging
chairs, and dock as
seen from the top
of the boat-house



Another
view from top
of the boat-house



Reclining in
the sunshine
on the dock





Porch of the
lake-house and
tennis court in
the background



The Lady chapel
main Building
St. Helen's Hall
Easter - 1934



Statue in parlor
- S.H.H.



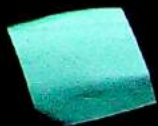
Dining Room
at Night
St. Helen's Hall



Front Door and
entrance hall

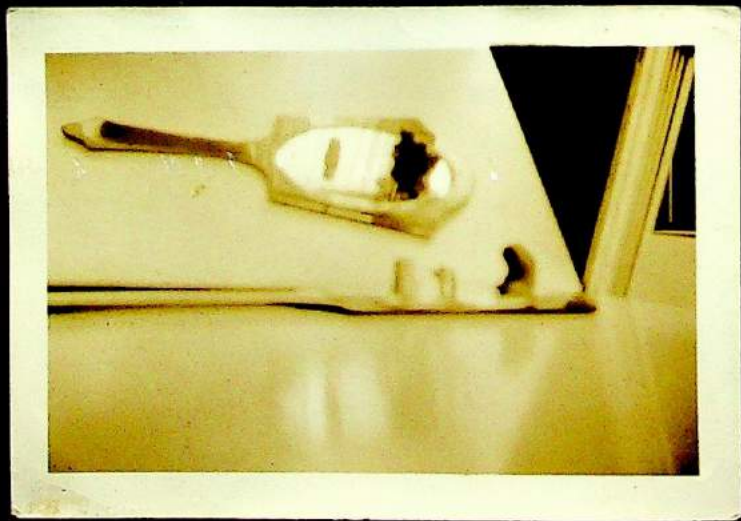


Corner of the
Parlor and the
Piano

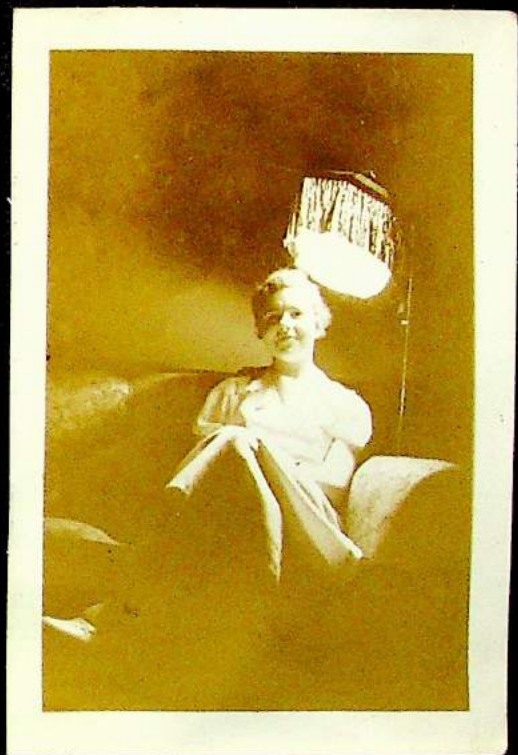




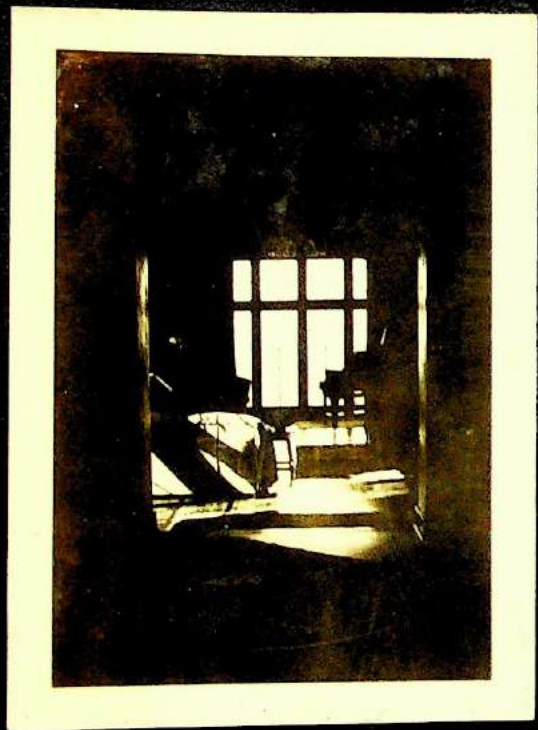
S.H.M.J.C. Building



A Reflection



Mary in the parlor



Bouvy's Living
Room

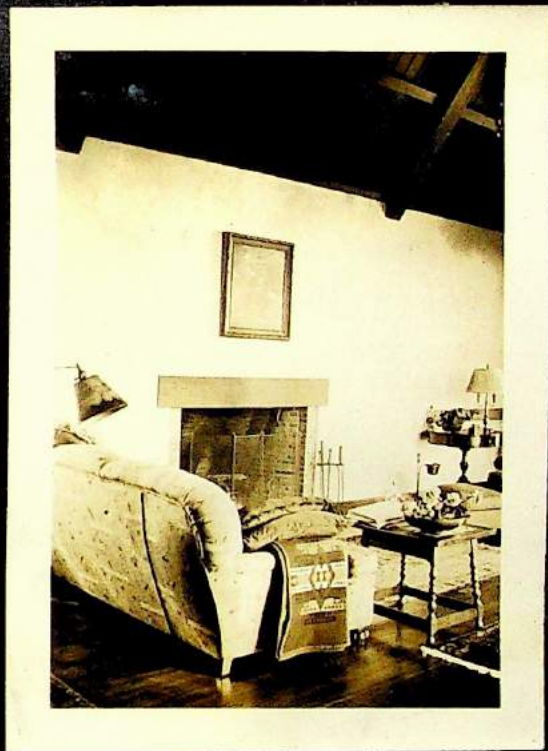


Den at Bouvy's with
Harriet's picture
on the wall



Bouvy's Front Door

Eleanor L.



Eleanor in the
living room

SUMMER - 1934

Mrs. Watzek reading at beach



SUN, SAND, & FUN

FRAN & I ON BEACH IN FRONT OF COTTAGE



Pete
AND I
ON THE
TANDEM
AT
SEASIDE



Pete in the Max

ROCKS
& I
CANNON
BEACH



Spring - 1934



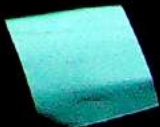
Pete, Jim, & I
out in the sea sled

Maudie

Fall - 1934



Montie, Fran, & I at Wauna





Mr. & Mrs. Watzek



Pete sailing
the Max





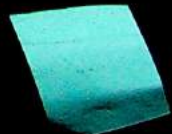
Pete, Fran, Faye Rice, & Jim
on the bow



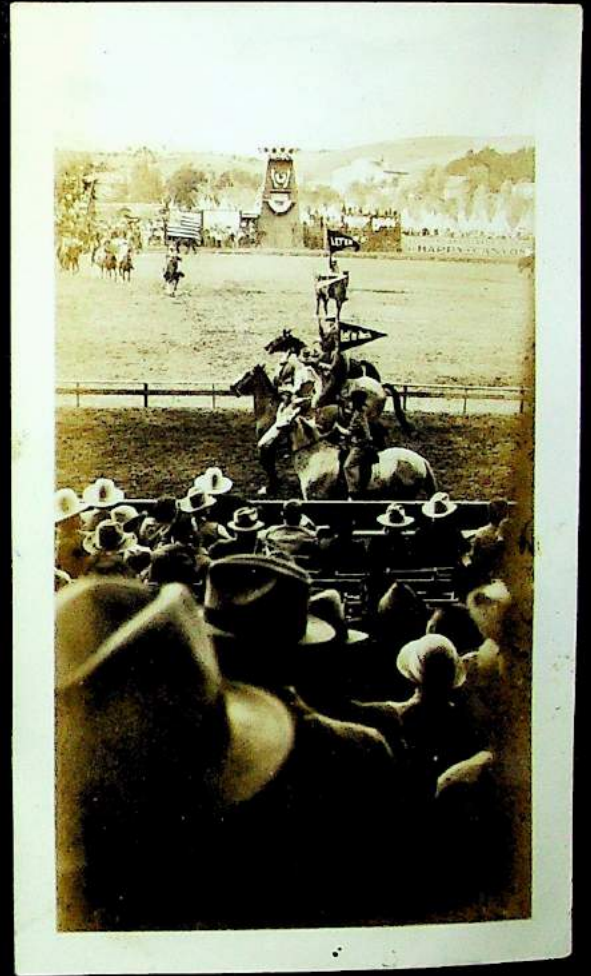
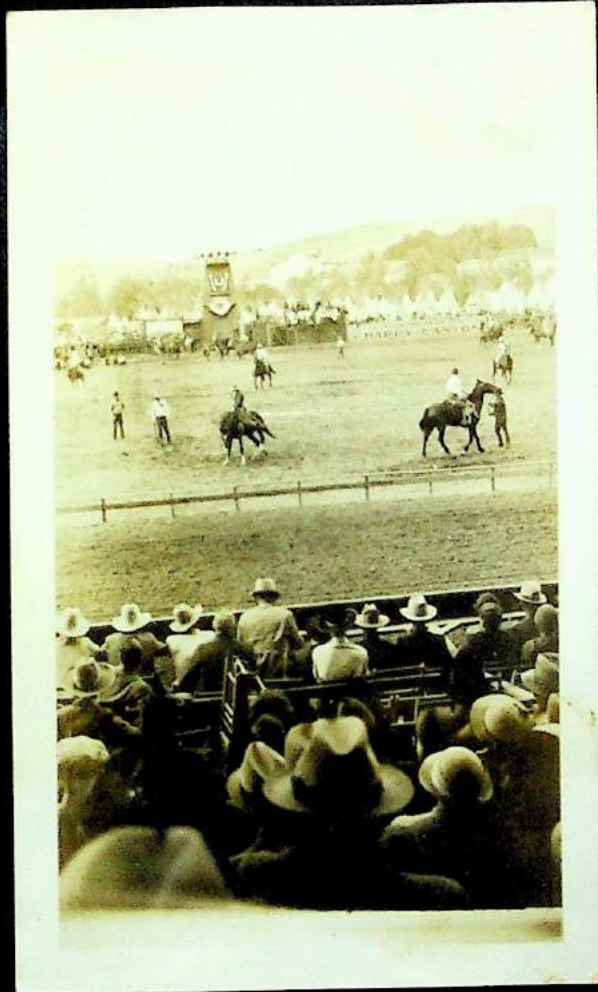
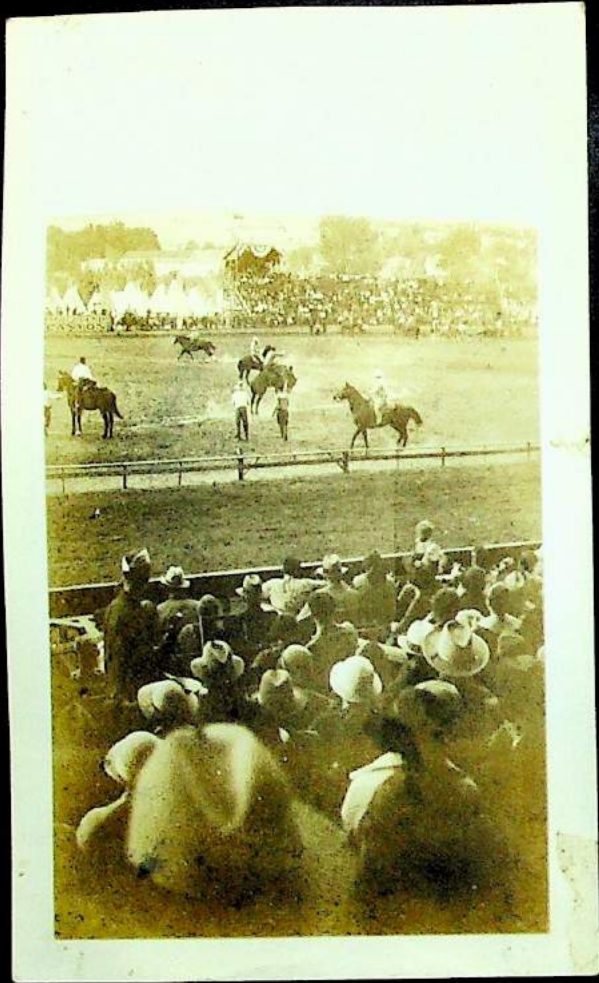
Pledges - Fall 1934 - Pi Beta Phi



Front: left to right - Ibbie Pratt, Betty Baker,
Caroline Hand, Marge stith, Betty Pownall, Jean Moir,
Betty Tubbs, Kay BUCK, Elizabeth Turner, Katherine CUMMINGS,
Molly White, Janet Coy Leone Baker, Jessie Rae Alwater
Mary Ellen Fierhard, VIRGINIA DUNCAN



ROUND-UP - 1934



Buckin' Horses

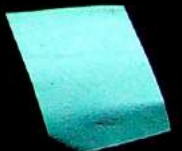
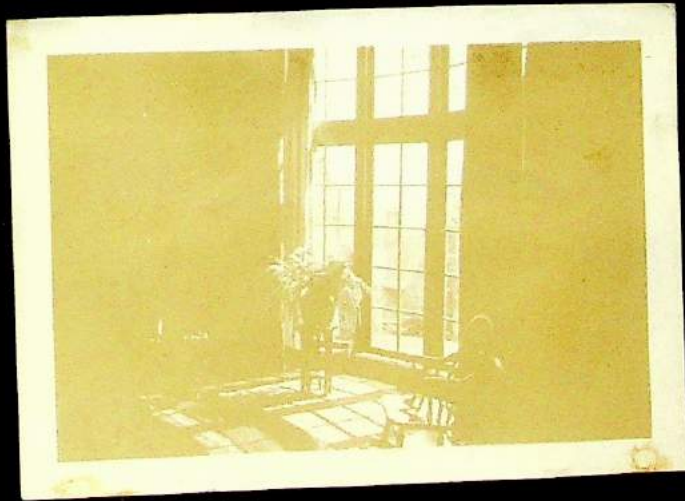
Frank in spotted shirt
riding next to the
grandstand

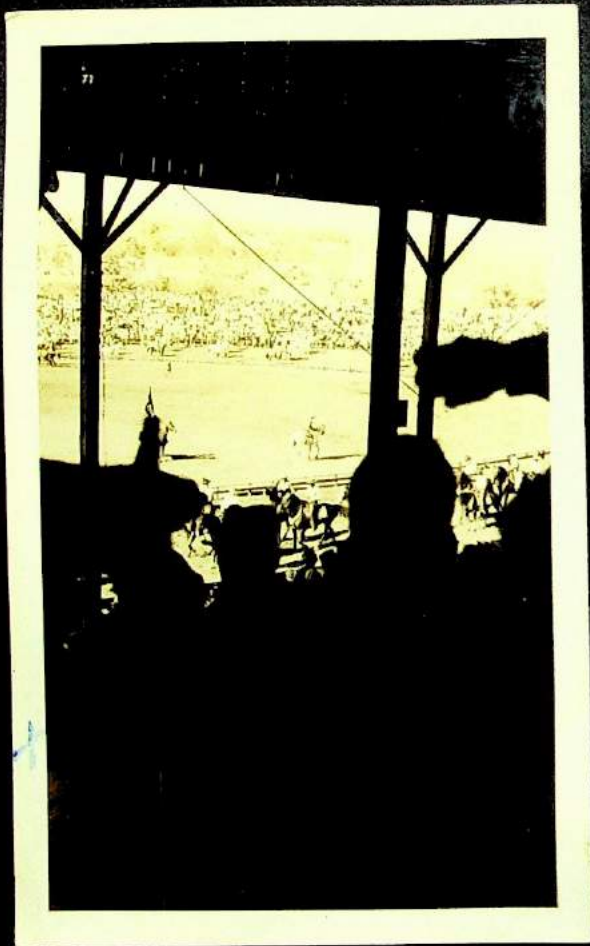


Bouvy's
Living Room

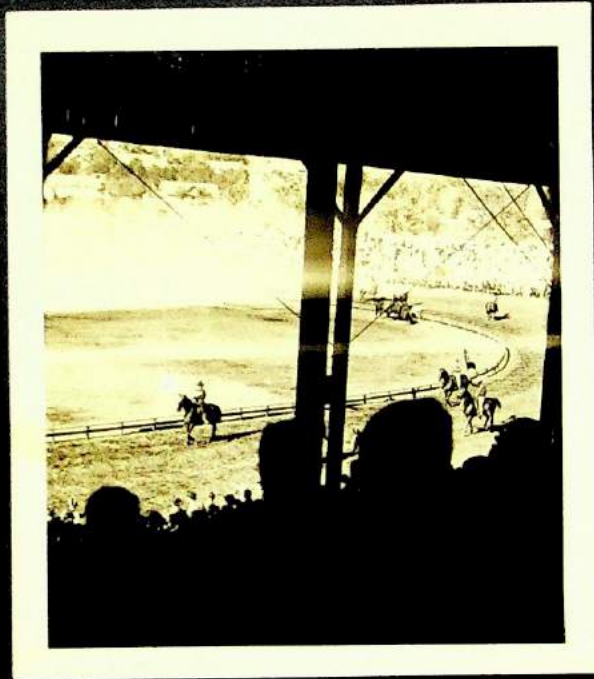


Eleanor

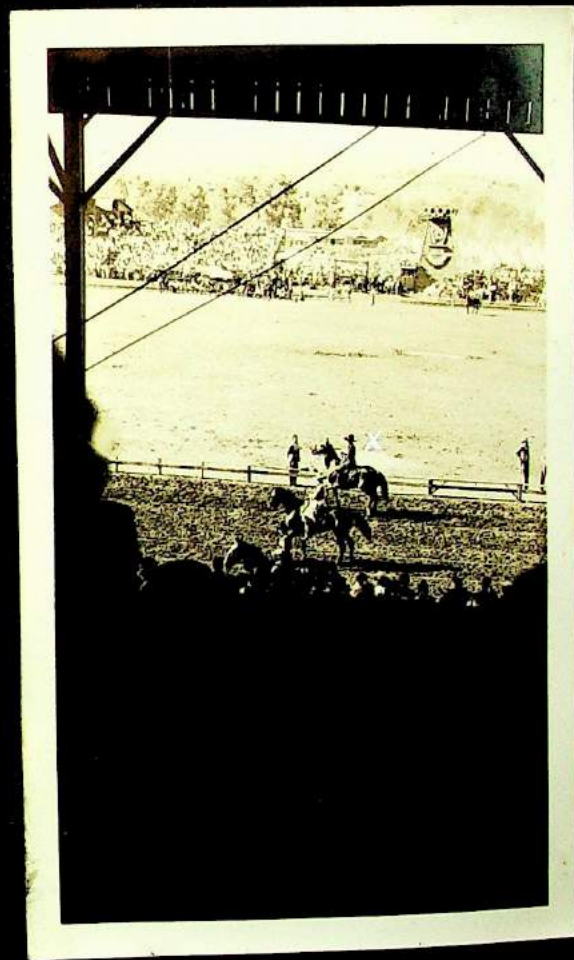




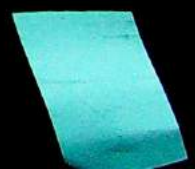
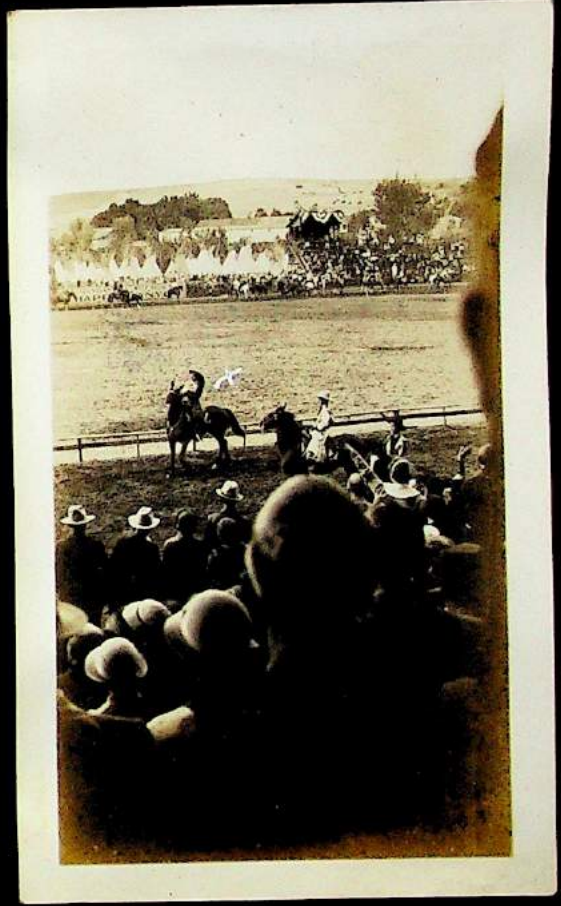
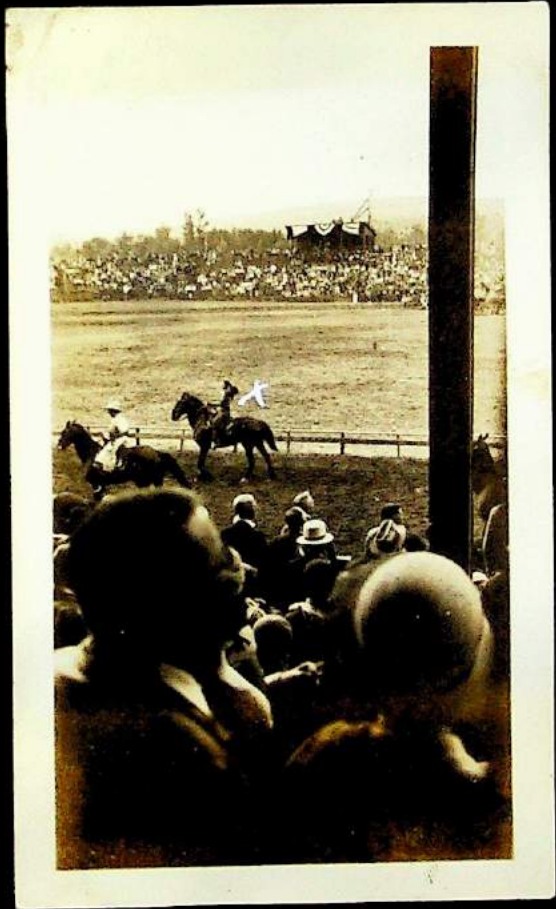
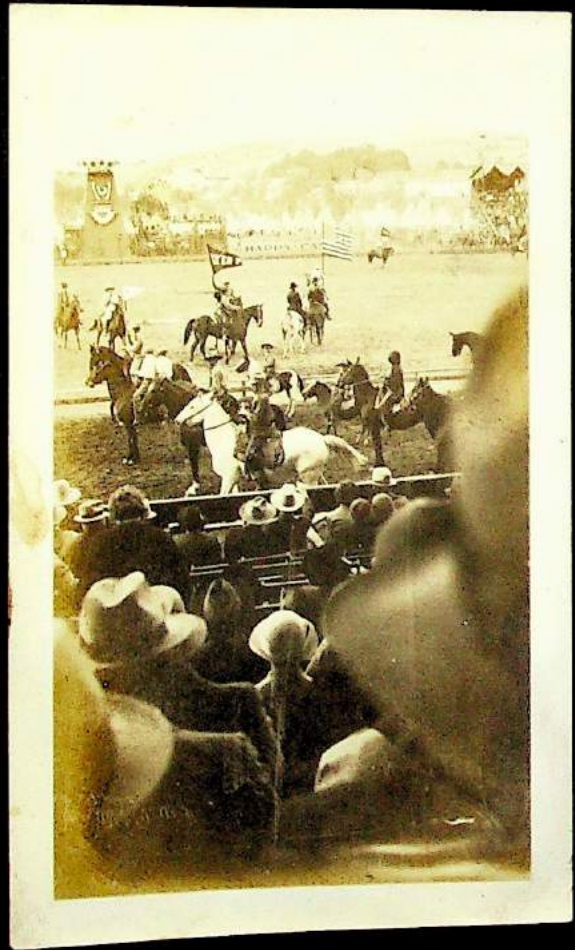
Daddy First
in Line of
the Parade

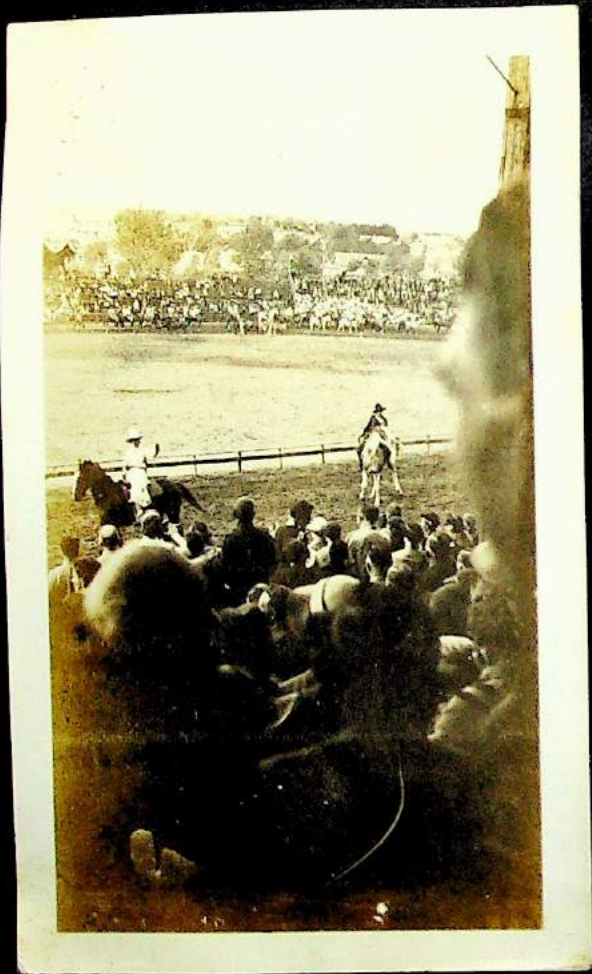


Me with
My Atmin a
Sling Riding Jeff

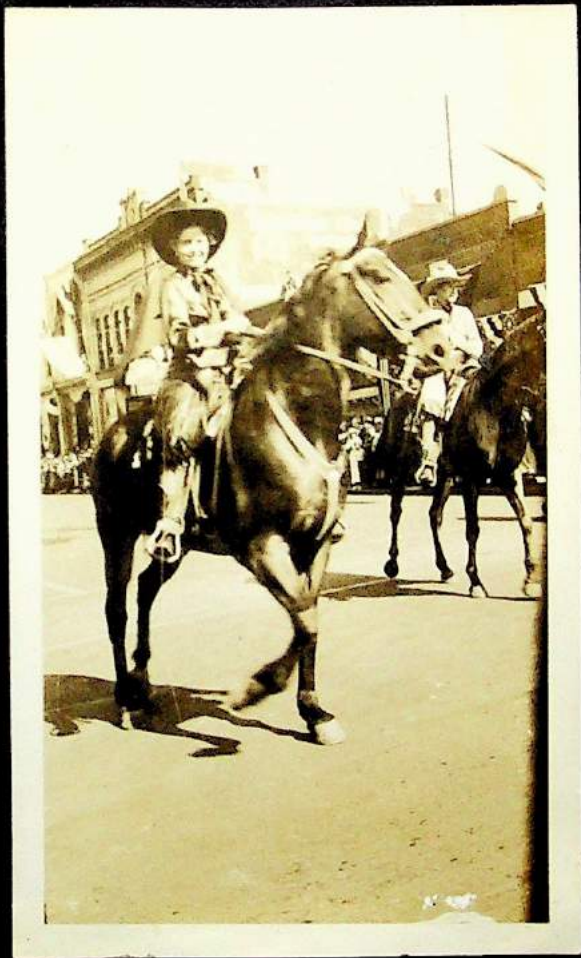


ROUND UP - 1934

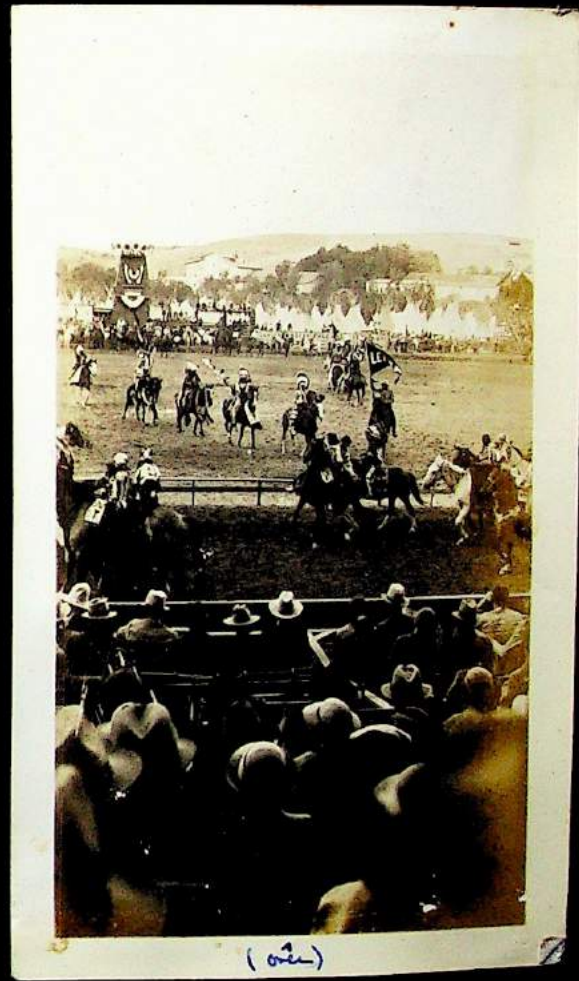




Queen Skitley
& Ha Barton



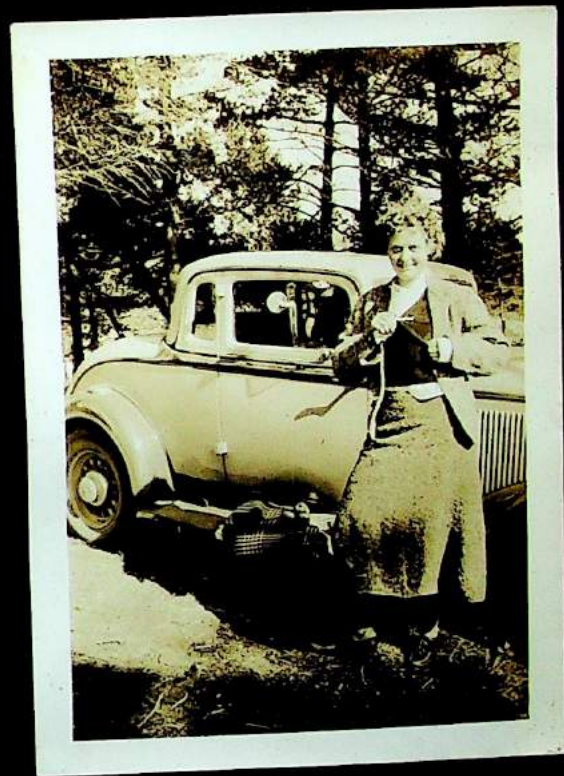
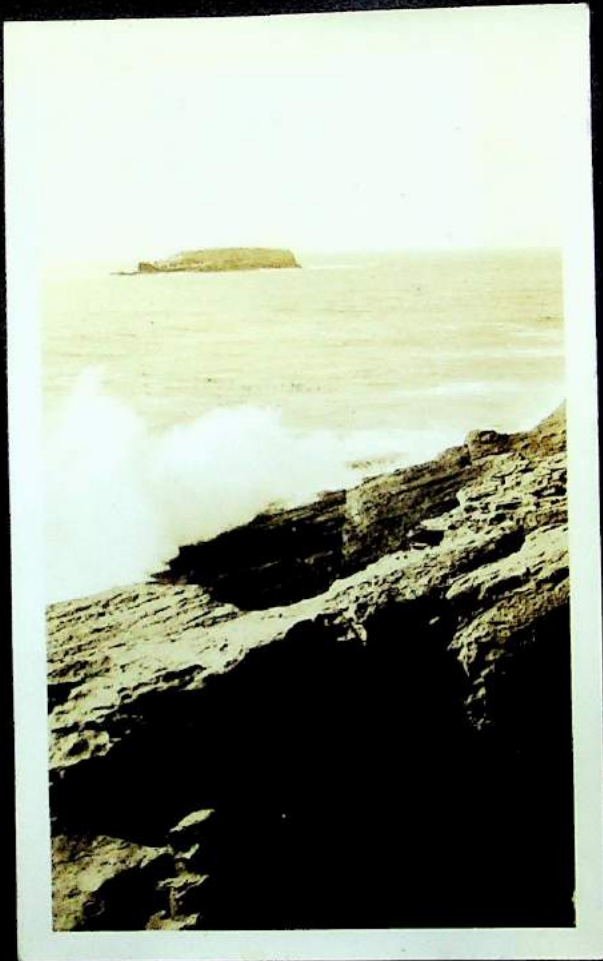
Riding in
the Parade



(over)

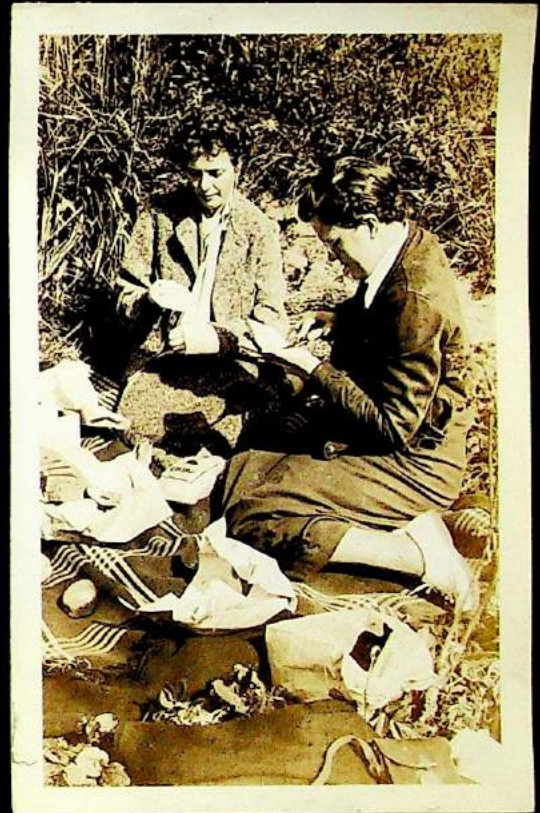
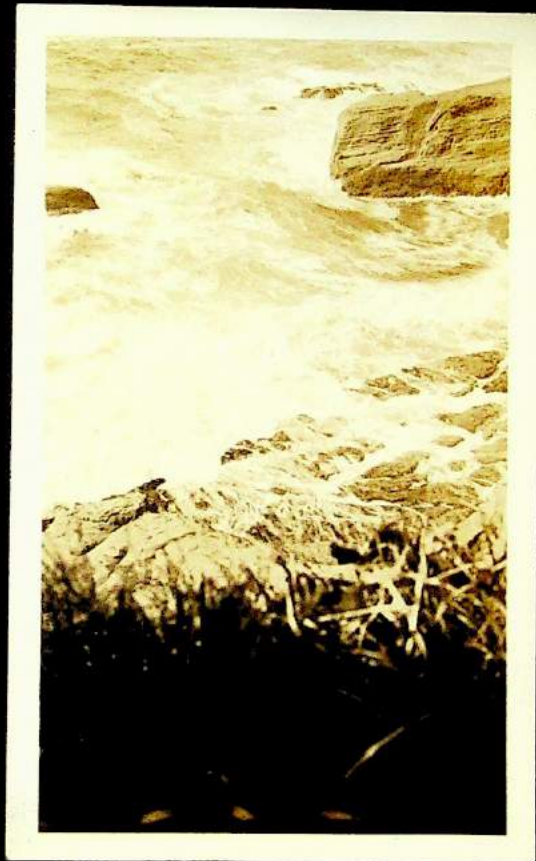


Fall - 1934



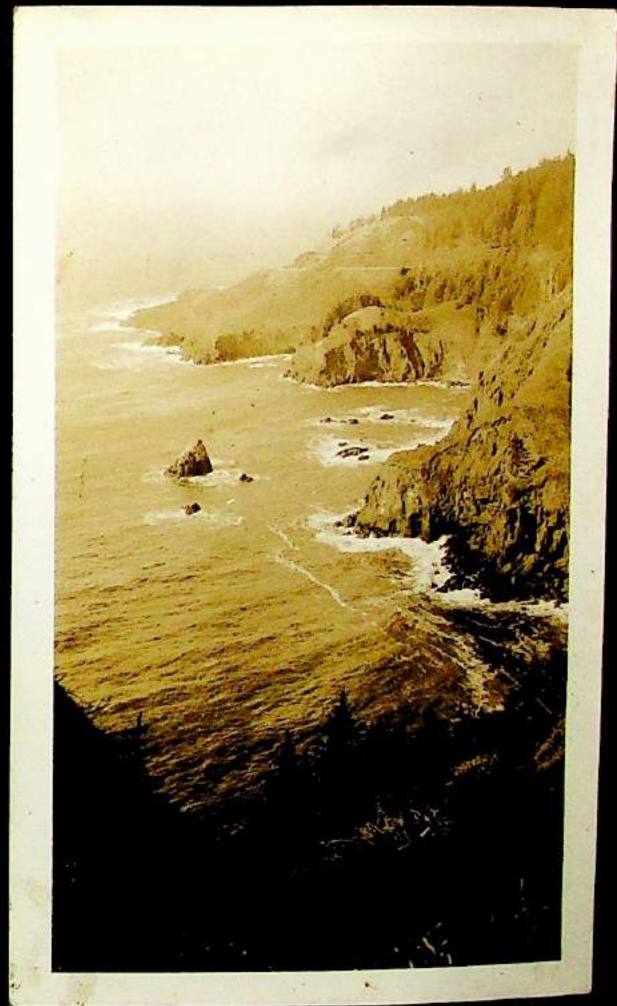
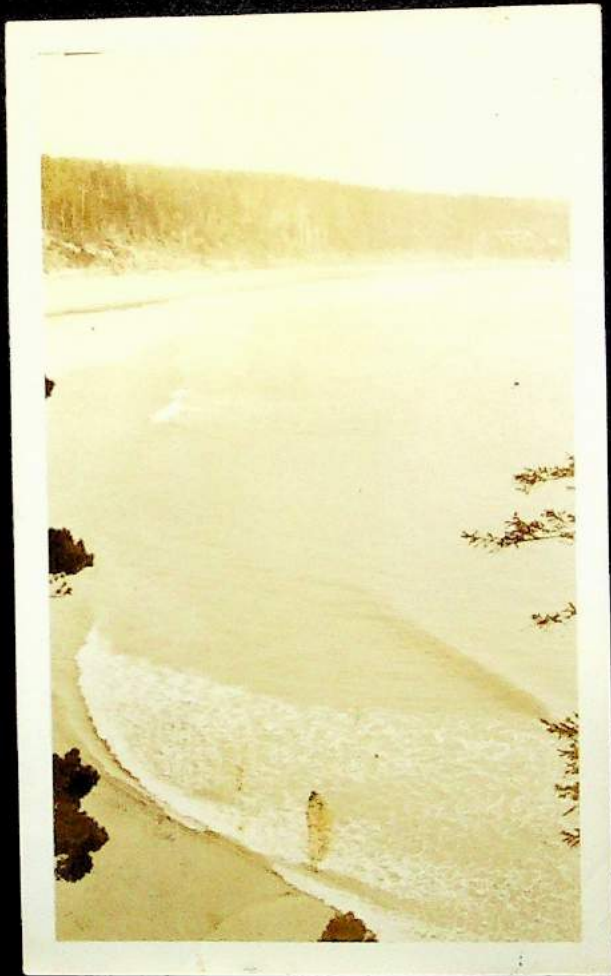
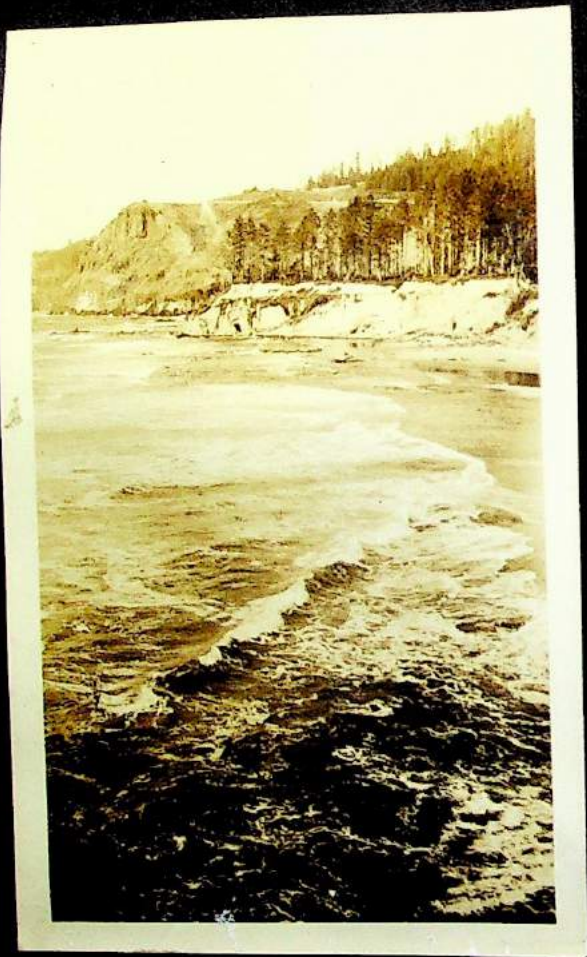
Taken on the beach
Near Newport

Fall - 1934



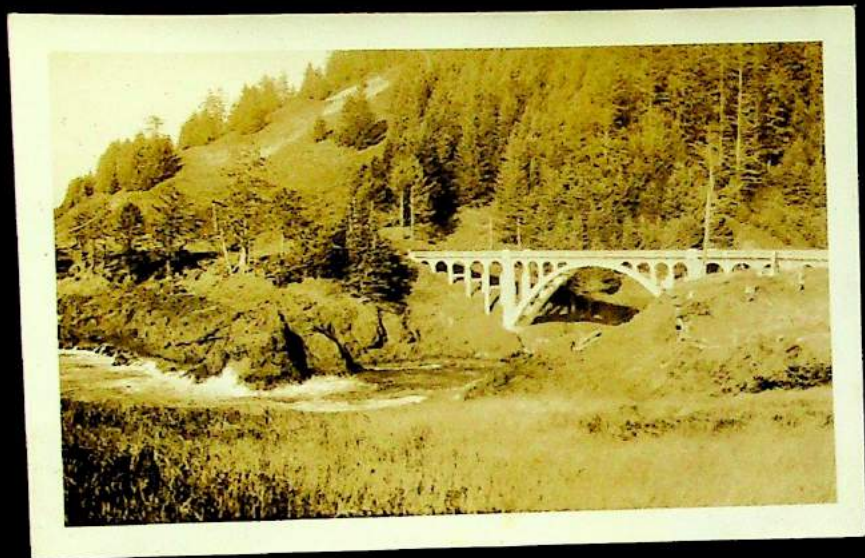
Picnicing on the beach
Near the Devil's Punch Bowl

Fall - 1934

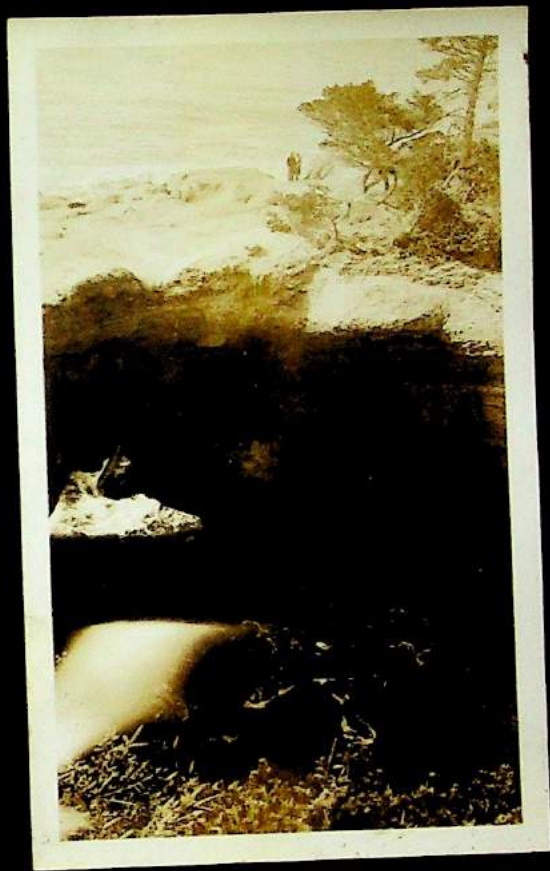


Beach scenes Above Newport

Fall - 1934



Bridge at ~~the~~
Depoe Bay

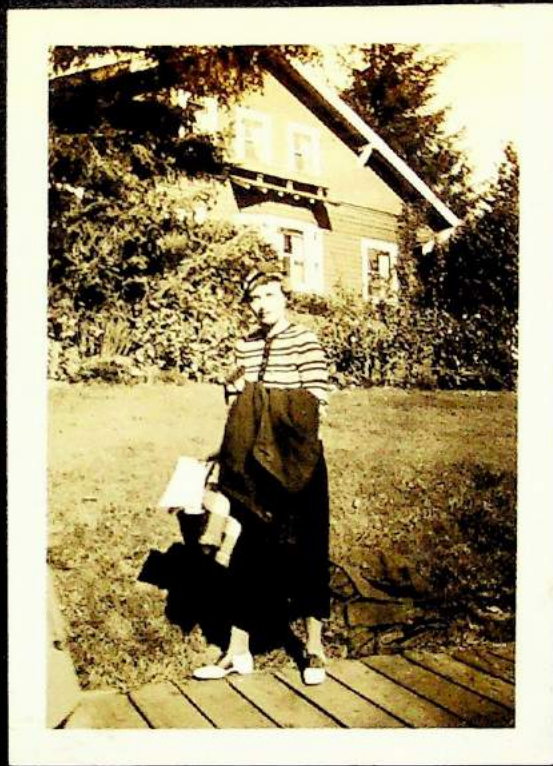


Devil's Punch Bowl



Pete in front
of the beach house
at Gearhart

summer - 1934



On ferry near
Beedport -
spring - 1935



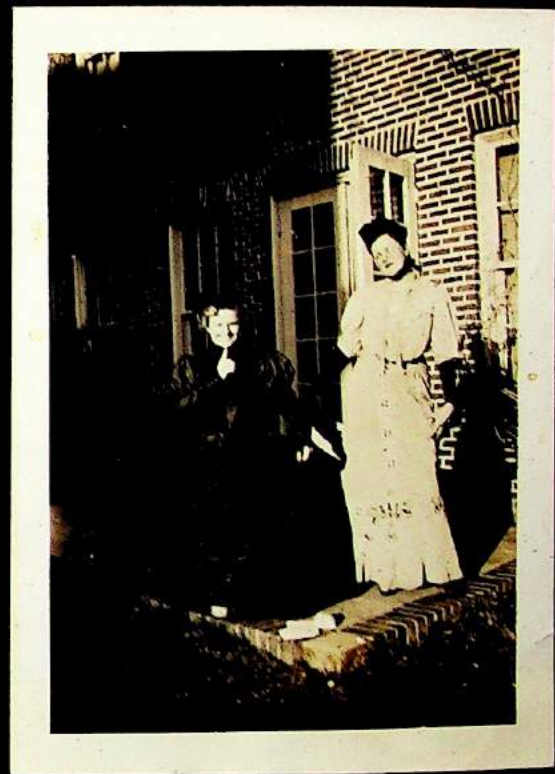
© Jack Shields
Photographer
1912















Willamette River - by J. H. Harada - Professor of
Geology at the University of Oregon
July 1910





View of Lake Tahoe from the shore of the lake
Harriet

JULY 22, 1936

On The Ranch Near Athena



Pictured here are Frank Curl, right, and his son Cecil on the large Curl ranch, two miles south of Athena. The Curls are now busy with pea and wheat harvest on their ranch, one of the largest in the county.

