

# St. Helen's Hall

←.....→  
PORTLAND, OREGON

APPLICATION BLANK

— for —

RESIDENT PUPILS

St. Helen's Hall

PORTLAND, OREGON

A check for \$25.00 must be sent with this application blank; this holds a place in the School and will not be refunded in case of withdrawal. Upon entrance this sum will be deducted from the pupil's 2nd term, board and tuition account, and has no connection with the \$21 or \$31 incidental charge required for entrance with the \$400.

Application is hereby made for the admission of my.....  
as a pupil in St. Helen's Hall for the school year beginning September  
....., 193.....

Parent or Guardian.....

Address.....

Full name of pupil.....

Date of birth.....

Course of study desired.....

Class or grade desired.....

Address of last school.....

Send your record from last school attended.....

Do you desire Piano, Violin, Organ, Cello or Vocal.....

Church affiliation.....

Give references:

For character.....

For business standing of parent or guardian.....

TERMS:

Board and tuition and laundry for the year.....\$800.00

Extras as shown in catalogue, page 34 for Resident Pupils.

First term:

Tuition payable on entrance.....\$400.00

Incidentals as listed on page 34 for boarding pupils..... 21.00

For use of piano if music is desired..... 10.00

Second term:

Tuition on January 25th.....\$375.00

All arrangements are made for the entire school year.

All necessary expenses in connection with illness are charged by the school at cost.

Breakage and more than ordinary wear of furniture will be charged.

1930-34  
ST. HELEN'S HALL

PORTLAND, OREGON

*Resident and Day School for Girls*

UNDER THE AUSPICES OF

THE EPISCOPAL CHURCH

IN THE DIOCESE OF OREGON

*"That our daughters may be as the polished corners of the temple"*

"Education is the end to be attained. Instruction is one of the means. Instruction provides the mind with the knowledge of certain things; Education forms at the same time the understanding, the heart, the character and the conscience."

—FELIX DUPANLOUP

*Board of Trustees of St. Helen's Hall*

THE RT. REV. WALTER T. SUMNER, D. D.,  
BISHOP OF OREGON, *Chairman*

THE REV. H. D. CHAMBERS

THE REV. CLAUDE BLACK

THE VERY REV. H. M. RAMSEY, D. D.

WILLIAM J. HENDERSON, ESQ.

A. M. ELLSWORTH, ESQ.

CLARENCE PORTER, ESQ.



ST. HELEN'S HALL was established by the Rt. Rev. B. Wistar Morris, D. D., and opened September, 1869, with Miss Mary B. Rodney as Principal.

In June, 1904, by the request of the Board of Trustees, the Sisters of St. John Baptist of the Episcopal Church undertook the charge of the school.

The aim of St. Helen's Hall is to provide for girls the best possible facilities for complete education. This means not only the cultivation of the intellect and the acquirement of graceful, womanly accomplishments, but also such moral and religious training as shall help the pupils to become pure, true women, with a high, positive standard of Christian living, to bring out in every girl some qualities of leadership, and to develop a right sense of her personal responsibility, so that she may become a power for good in her home, and in the community in which she lives.





FRONT VIEW AND ENTRANCE



### *Location*

ST. HELEN'S HALL is situated on Thirteenth Street, between Montgomery and Hall Streets. It is a handsome three-story brick building, adapted for the accommodation of about thirty-five resident pupils, and a large number of rooms with all the necessary equipment to meet the demands of a modern standardized school, large sunny halls of unusual attractiveness, spacious grounds, and an outdoor gymnasium where tennis, basketball, and sports of all kinds are played throughout the year.



## THE SCHOOL

The interior administration of the school has been entrusted to the Sisters of St. John Baptist, who have the general superintendence of every department. In secular studies they are assisted by a staff of efficient instructors, college graduates, especially trained for their work.

A daily record is kept of the attendance, scholarship, and deportment of every pupil, and a report of the same is mailed to parents at the close of each quarter.

Pupils failing, after a fair trial, to attain the required standard of scholarship or deportment, will not be retained in the School.

The Sister Superior will always be glad to receive visits from the parents of pupils.

---

### *Departments*

The School consists of three departments, a Kindergarten, the Lower School and the Upper School.

The Lower School includes the six classes covering the same ground as the public school to the Seventh Grade, but with a broader range of subjects.

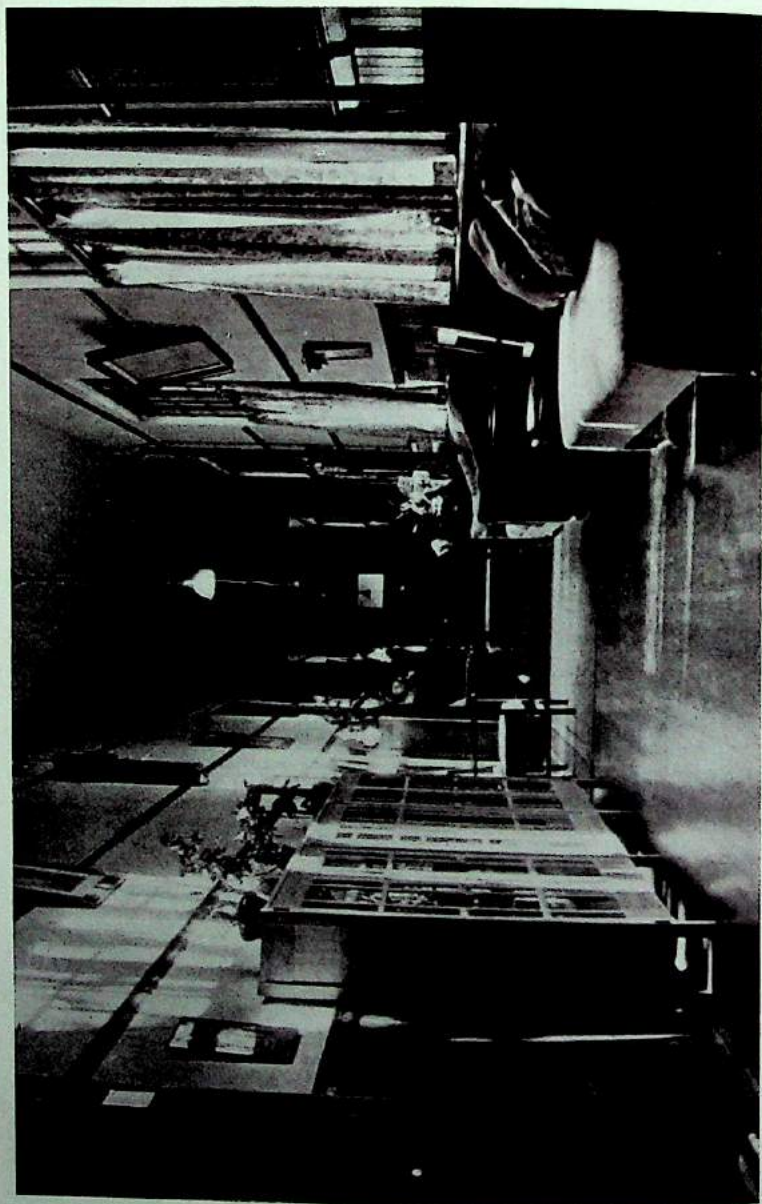
The Upper School covers six years and is divided into two courses,—the College Preparatory Course and the General Course. Two extra years of either collegiate or special work may be taken if desired. The First and Second Forms of the Upper School correspond with the Seventh and Eighth grades of the public school, and the Third, Fourth, Fifth and Sixth Forms correspond with the four years of the High School work. The College Preparatory Course and the General Course begin with the Third Form.

St. Helens' Hall is a standard school of Oregon, and is accredited to all the Western Colleges and Universities. This allows students to enter without examination, and the work is accepted by the Eastern Colleges according to the new entrance requirements. The passing grade of the School is 75 per cent. The recommending grade of the School to Western Universities is 85 per cent. For entrance to Stanford University on the preferred list, and for the Eastern College an average of 90 per cent is required.

The College Course is especially for pupils preparing for Eastern Colleges. All Eastern Colleges are not uniform in their requirements, but entrance examinations are necessary for all. Therefore, it is advisable for students preparing for them to take their preliminary examinations at the end of the second year, and in some instances one or two may be taken at the end of the first year. This allows a better distribution of the work and lessens the strain of the Senior year.

We urge parents who intend to send their daughters to college to register them in one or more colleges or universities very early in their school life. This step is necessary because of the crowded condition of these institutions, especially so of the major Eastern colleges. It is also a wise one because the pupil's preparatory work may then be definitely planned to fit her for whatever college she desires to enter, without undue pressure in her Junior and Senior year.

In the General Course no credit will be given for less than two years' work in any language. German or Spanish may be substituted for French throughout the course. Pupils may enter any class for which they are prepared, but the Diploma of St. Helen's Hall is not given for less than two years' attendance. This course meets the requirements of all Western Universities and Colleges.



THE MIDDLE OF THE LOWER HALL

The General Course is intended for pupils desiring to lay the foundation of a broad general education, and meets the requirements of those Universities and Colleges which do not require four years of preparatory work in Latin. In it the time, which in the College Preparatory Course is necessarily spent in Latin, is devoted to Literature, History and Modern Languages. Much of the work is common to both courses, and the standard of thoroughness is the same.

Music, Art and Elocution count as regular elective studies in the General Course. A four-year course in any one of these subjects, satisfactorily completed, will be taken into account for graduation.

### *English*

The aim in this course is to give pupils thorough instruction in English Grammar and Rhetoric, to enable them to write with ease and accuracy, and to teach them to appreciate what is best in English Literature. Throughout the School the reading matter is carefully selected and in the fourth and fifth years of the Upper School, history of English Literature is studied. After this the work consists chiefly in the writing of compositions and the critical study of English masterpieces, especially those required for College Entrance Examinations.

### *French and Spanish*

In these courses the aim is to enable the pupil to read the languages at sight and speak and write them easily.

In order to acquire a good pronunciation, the study of French should be begun in the Lower School, the lessons at first being in the form of conversation and easy reading. Afterward grammar and translation are begun. In the last year of the course, French composition, history and literature are studied.

French or Spanish may be begun in the third year of the Upper School and carried to the point required for admission to College or beyond it, as may be desired. Attention is paid to pronunciation, conversation and sight reading, as well as to grammar and translation, and French and Spanish songs and plays form a part of the course.

### *Latin and Greek*

"Latin and Greek are not regarded as dead languages except in the sense that all language of books not in our era is dead. They are living in the sense that the English of Chaucer and the Italian of Dante are alive, dead only to those to whom for lack of knowledge they are sealed books."—(Cambridge School Manual.)

A four years' course in Latin is provided, meeting the usual college requirements in Cæsar, Cicero, Virgil, Ovid, sight reading, and prose composition, adapted to the new comprehensive examinations of the College Entrance Board.

### *History*

The study of History is begun in the Lower School and continued to the end of the school course. In the College Preparatory Course it is necessarily limited to the Eastern College requirements, which, however, are constantly increasing both as to quantity and quality. In the General Course five courses of history are offered. The topical method is approved, collateral reading is encouraged. Maps are drawn, and historical geography is held to be an important part of the work. History and English are intimately associated, pupils being required to commit to memory historical poems, and to write compositions on subjects drawn from historical lessons. The school is fortunate in possessing a fairly good, though small, library of History and Literature bearing upon it.

### *Mathematics*

"In teaching Mathematics the aim is to develop the spirit of inquiry, the habit of accuracy in reasoning, and the love of truth."—(Cambridge School Manual.)

The prescribed course comprises Arithmetic, Algebra and Plane Geometry; elective, Solid Geometry and Trigonometry.

Throughout the course original work is encouraged and set rules are avoided. The pupils are encouraged to rely as little as possible upon text books.

### *Science*

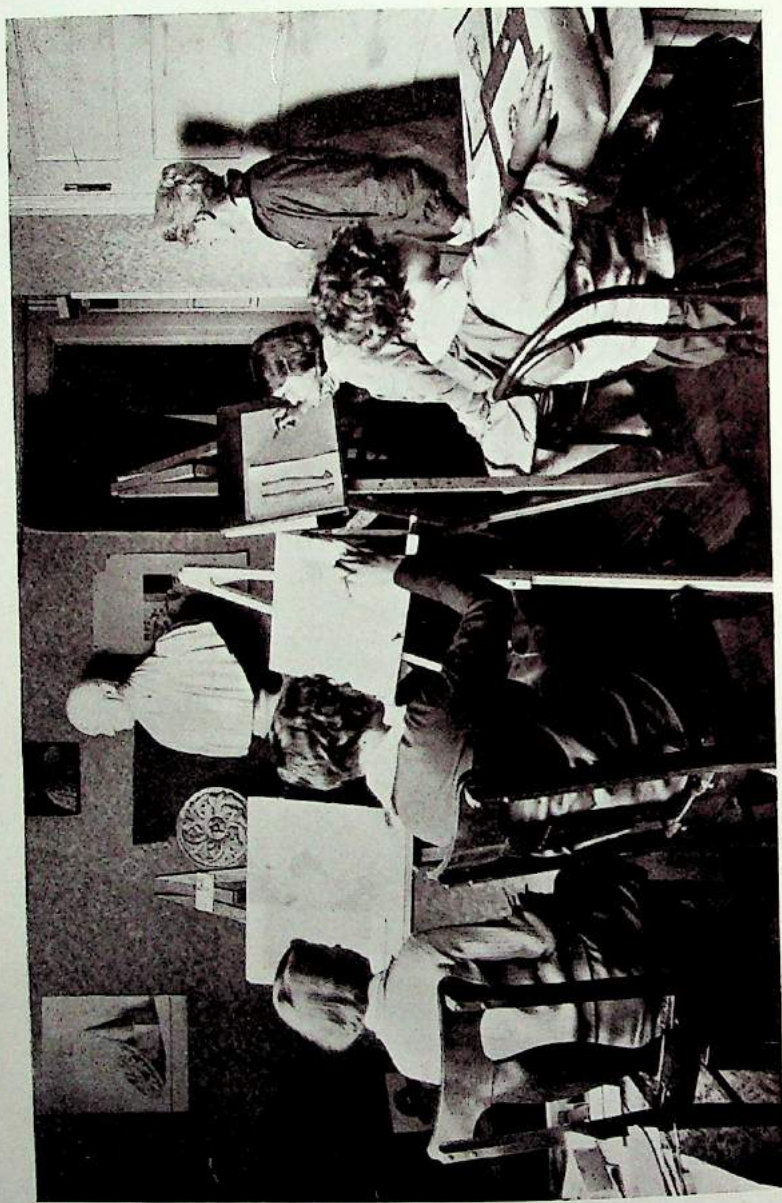
This department is conducted in accordance with the best scientific methods. Natural History is taught in connection with Geography in the Lower School. In the Upper School the subjects are taken up as indicated in the course of study. Laboratory work is required of all students of Science. It is considered that one or two Sciences, each thoroughly studied for not less than one year, will do more for the pupil's intellectual development than a larger amount of superficial work.

### *Domestic Science*

Cookery—Laboratory and lecture classes in the theory and practice of cookery, together with modification of its laws.

Foods—Their history, care, composition, cost and nutritive value.

Plain Hand and Machine Sewing—Bringing into use the primary stitches with their modifications and combinations, and developing the simpler rules of garment making.



A CORNER OF THE STUDIO

1933-34

ALL

# Official School Dress

## of Wool Crepe

For Students Attending St. Helen's Hall



THE JUMPER DRESS sketched above may be made of navy wool crepe with red or blue tie, or of brown wool crepe with tan tie and trimmed with four buttons and slide buckle. Belt must be attached to dress.

This Jumper is to be worn with a white blouse of fine cord pique, as sketched, made with tucked front and with either long or short sleeves.

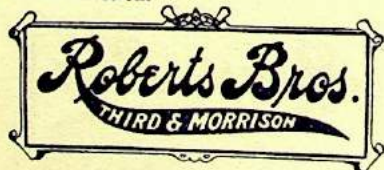
### SWEATERS

*Delphic Sweaters in Slipover Style with long or short sleeves, are to be of dark blue or tan.*

Wool Crepe in brown and navy for the Jumper Dress may be purchased at our Dress Goods Section.

The Pique Blouse may be purchased at our Sports Wear Section.

The White Pique material may be purchased at our White Goods Section.



1933-34

—St. Helen's Hall and navy blue serge

esses of Pamico cloth and tie. (For warm

tan, not striped or

ack or brown. n, black, or tan—not

or white or tan for ot striped or figured.

red) or white or tan

iped in red.

the maximum amount Meier & Frank Co., Roberts on request. Materials



**Official  
School  
Dress**  
*of*  
**Wash  
Material**  
*For Students  
Attending  
St. Helen's  
Hall*

THIS ONE-PIECE DRESS is made in washable Pamico Cloth, in dark brown or Olympic blue, trimmed with white pique collar, cuffs and tie. Sleeves may be long or short with cuff effects. Tucks at blouse front give adequate fullness. The skirt has inverted pleats at both back and front, giving fullness for walking. A belt and pocket add smartness.

**GYM SUITS**

*... are to be of Blue Pamico Cloth piped in red.*

Pamico Cloth in brown or blue for the Official School Dress, and in blue for the Gym Suits, may be purchased at our Cotton Goods Section.



**Official  
Dinner  
Dress**

*For Students  
Attending  
St. Helen's  
Hall*



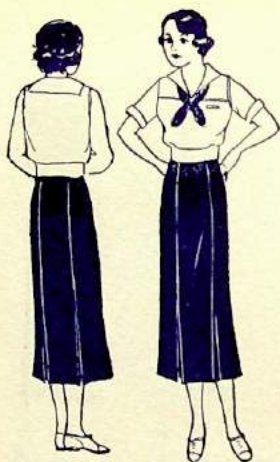
ONE-PIECE DRESS, as illustrated, may be of white or gobelin blue silk crepe with any color tie in uniform style. Note the turn-down reverses and collar features. Sleeves may be long or short, with cuff effects.

Tucks at the front of blouse give adequate fullness. Skirt with inverted pleats. A belt and pocket add finishing touches. The Delphic coat style sweater in white is required.

**Materials Must Match Samples  
Exactly**

Pure Dye Silk Crepe in white or blue for the Official Dinner Dress may be purchased at our Silk Goods Section.





## White Middies

and

## Blue Skirts

For Students  
Attending  
St. Helen's  
Hall

THE WHITE MIDDIES, with dark blue skirt, are the only exception to the official school dresses. The skirts to be made in dark blue serge, with inverted pleats at both front and back—the middies of cotton wash material with narrow collar, and long or short sleeves.

### SWEATERS

*Delphic Sweaters in slipover style, with long or short sleeves, are to be of dark blue or tan.*

BLUE SERGE for Gym Skirts may be purchased at our Dress Goods Section.

WHITE MIDDIES and DELPHIC SWEATERS may be purchased at our Sports Wear Section—also the Official Silk Ties.

OFFICIAL SCHOOL HOSE may be purchased at our Hosiery Section.

**Materials Must Match Samples**



# ST. HELEN'S HALL

Portland, Oregon

## DRESS REGULATIONS

(Day Pupils and Boarders.)

### FOR SCHOOL AND SPORTS:

All sleeves must be elbow or full length.

Two navy blue or dark brown woolen dress School regulation dress, or white middies pleated skirts if desired.

Two Copenhagen blue or brown one piece dress (washable) with white pique collars, cuffs weather.)

One sport hat.

One light weight <sup>Delphic navy</sup> sweater, dark blue, white or figured.

One pair heavy oxfords or shoes (low heels), blue Stockings: plain cotton, lisle or woolen, brown silk.

Ties may be school colors (dark blue or red) the brown or blue dresses—plain colors, n

### FOR GYMNASIUM:

One heavy sweater ~~school colors~~ (dark blue or —plain color not striped or figured.

One piece Gymnasium suit—Copenhagen blue p

One pair of high tennis shoes.

One pair of gymnasium shoes.

All of the above list is not necessary but it is allowed. The Official School Dress may be obtained at <sup>Roberts Bros.</sup> Portland, Oregon. Design and sample of materials sent must match samples exactly.

# ST. HELEN'S HALL

Portland, Oregon

## DRESS REGULATIONS 1933-34

(Day Pupils and Boarders.)

### FOR SCHOOL AND SPORTS:

All sleeves must be elbow or full length.

Two navy blue or dark brown woolen dresses—St. Helen's Hall School regulation dress, or white middies and navy blue serge pleated skirts if desired.

Two Copenhagen blue or brown one piece dresses of Pamico cloth (washable) with white pique collars, cuffs and tie. (For warm weather.)

One sport hat.

One light weight <sup>Delphia navy</sup> sweater, ~~dark~~ blue, ~~white~~ or tan, not striped or figured.

One pair heavy oxfords or shoes (low heels), black or brown.

Stockings: plain cotton, lisle or woolen, brown, black, or tan—not silk.

Ties may be school colors (dark blue or red) or white or tan for the brown or blue dresses—plain colors, not striped or figured.

### FOR GYMNASIUM:

One heavy sweater ~~school colors~~ (dark blue ~~or red~~) ~~or white~~ or tan—plain color not striped or figured.

One piece Gymnasium suit—Copenhagen blue piped in red.

One pair of high tennis shoes.

\* One pair of gymnasium shoes.

All of the above list is not necessary but it is the maximum amount allowed. The Official School Dress may be obtained at ~~Meier & Frank Co.~~ <sup>Robe</sup> Portland, Oregon. Design and sample of materials sent on request. Materials must match samples exactly.