

*Lucas Ramba*



# *The Scintilla*

Volume VIII, 1941

St. Helen's Hall Junior College

Portland, Oregon

General Superintendence of  
Sisters of St. John Baptist

*Photos Group--Baker Studio*

*Photos Portraits--Doré*

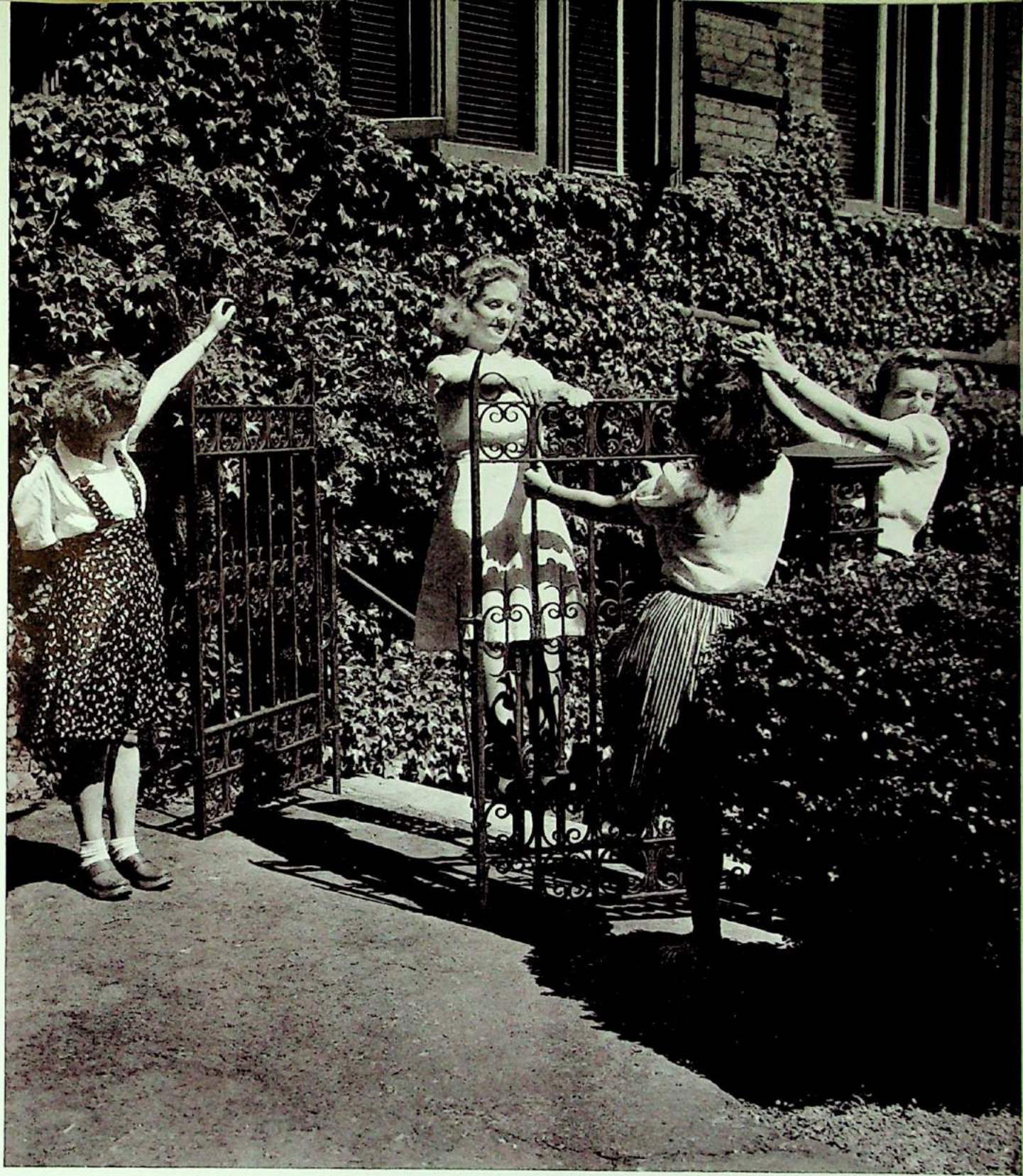
*Engravings by--Peterson-Schon*

*Printed by--Glass-Krohn Printing Co.*

## *The Scintilla*

Often as you turn these pages, you may look for more than a record of the years spent here at the Hall. We have tried to give you more; and searching, you may find glimpses of tradition, friendship, and lasting love. Capturing the spirit of fellowship is an abstract effort, but the body of the yearbook is substantial. For *you* are here. There have been times when you worked without credit and occasions when you were praised without reason. But in these pages are records of your true achievements only. The Annual is, as its name implies, a mirror to image the facets of your youthful personality, and to retain them, scintillating, for all time. In years to come you may see yourself again as a worker in a club, as an officer in an organization, as a laughing and happy girl among your friends, or perhaps as an honored and admired member of Angelas.

Glancing through the Annual, you will be reminded of still other scenes, recorded only in your memory. The recalling of these two years of your life is the purpose of our Annual.—This is your book.



*I'm ready to go on. I'm ready. Are you?  
The hundredfold answer comes back in assent.  
We've accomplished each thing whether little or big  
As well as we knew how.  
We're ready.*

## *Dedication*

To the spirit of St. Helen's Hall that points our way.

It's a force of which we seldom speak; one doesn't dwell on abstractions. Yet, it leaves its unmistakable impression on each girl who is graduated from the junior college at the Hall. When she leaves, she carries with her its lasting influence.

It's in a "good morning"; it's in that group on the campus; it's in each traditional event; it's in all of the fun at Everglades; and always its ineffable presence adds meaning to the diploma and decreases the feeling of finality at the time of commencement.

## *Theme*

We are striving — each one to give the best that is in her. We dedicate our Annual to the spirit of St. Helen's Hall, and we use as a theme the tangible effect of this spirit in our lives. This effect is expressed through the effort of each of us to climb as high as she is able. Though some reach a higher goal than others, each knows she has done her best and experiences the satisfaction which comes with that realization. The theme — to give expression to one's highest capabilities and to fill effectively one's place in life.

*Administration*

*Be Best*

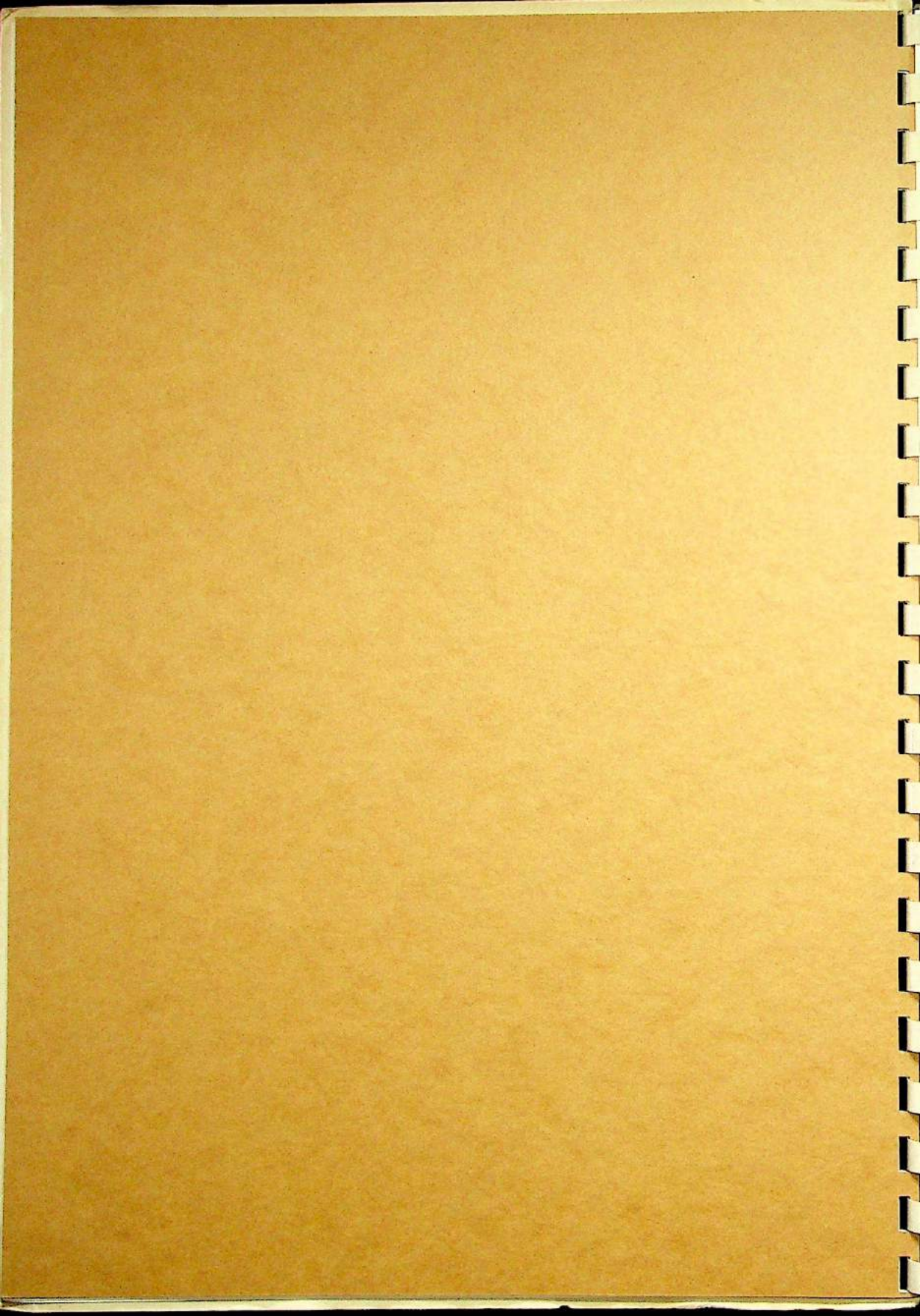
If you can't be a pine on the top  
of the hill,

Be a scrub in the valley—but be

The best little scrub by the side of  
the rill;

Be a bush if you can't be a tree.







Gertrude Houk Fariss  
Dean

*Good wishes  
and pleasant  
memories  
Gertrude Houk Fariss*



Ena Marston  
Registrar

## To The Graduates . . .

BECAUSE "messages" to graduating classes tend often to formalism and occasionally to truism, I hope that these words may be simple and direct, spoken out of my heart straight to yours. Our association has been a fine one—an experience which will be constantly valued by all of us.

Take from the Hall and hold steadfastly the best that her traditions and her ideals have given you. Apply what you have taken, during the years ahead, in a truly practical, workable way to every problem, personal or social, which you are called upon to meet. You have learned to serve; serve honestly and constructively your work, your friends, your family, your country. You have learned to feel; feel deeply and sensitively the poignancy, the power, the beauty, and the love with which life surrounds you. You have learned to think; think clearly and constructively through individual difficulties, economic upheavals, political crises, and spiritual challenges. You have learned to live; live fully and satisfyingly each moment, as it unfolds to you new possibilities for growth, new knowledge of humanity, new opportunities for service, new horizons for the future.

As you go, carry with you the knowledge that we who have worked with you and dreamed with you will be finding always in you the fulfillment of our work and of our dreams. Our thoughts go with you—on to your new horizons.

—Gertrude Houk Fariss

*Alice M. Bahrs.*



Katherine S. Arnold  
French

*Anne Hildenbrandt*



F  
A  
C  
U  
L  
T  
Y



Dr. Alice M. Bahrs  
Head of Science Dept.

Carolyn Gordon Bowers  
Director of Drama

Lee Miller Brown  
Clothing and Design

Anne Hildenbrandt  
Dancing

Mary Hobson  
Physical Education

Lenore L. Irvine  
Physical Education

Clarence Slocum  
Spanish  
History

Marjorie Stevens  
English for Nurses

Clorinda Topping  
Music Appreciation  
Speaking Voice



Alma Dickie  
Librarian



F  
A  
C  
U  
L  
T  
Y

Esther Burch  
Social Science

Marion Leach  
Commercial

Keith Wallace  
Art

*Congratulations!  
Keith Wallace*

Homer A. Chamberlin  
Journalism

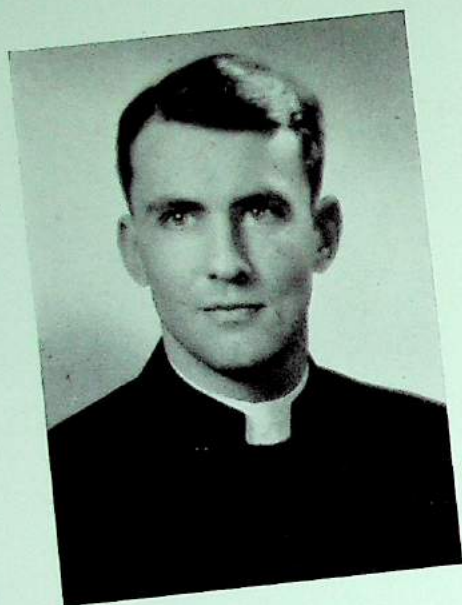
Elizabeth P. Mouser  
Nursing Subjects

Quenroda Wilhelm  
Home Economics

Clara Chapman  
Psychology

Marian Pettibone  
Science

Rita York  
Child Psychology



The Rev. Arthur A. Vall-Spinosa

#### AVE ATQUE VALE

"Hail and farewell".

The class with which I entered the Junior College is now graduating. It seems impossible that these two short years are now at an end and that the "hail" of some twenty months ago is but a faint echo down the long corridor of time. I do want to wish you "good luck in the name of the Lord", just as fervently and honestly as I did then, and even more certainly, now that my initial stagefright has passed.

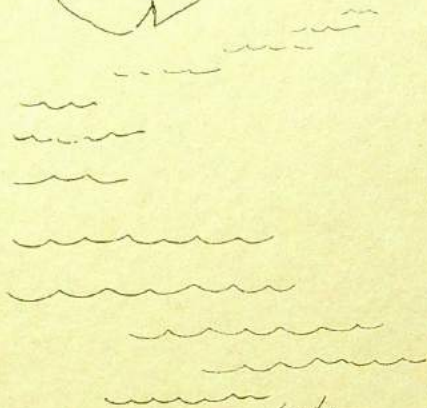
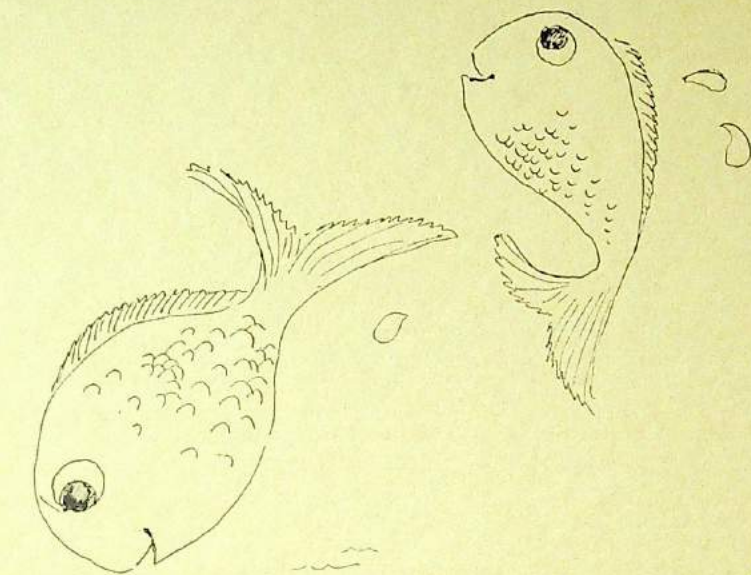
Now I have to say "farewell", but as I do, will you understand it to mean *fare well*? There is no "end" of anything, no page marked FINIS in our book of living; mayhap a period, an indentation, a momentary stopping place. But pages continue to turn, and the brief pauses mark the chapters of our growth. Fare well means "carry on successfully", and if you continue with the same *discipline* as well as *energy* with which you have carried on so successfully during the past two years, you will indeed fare well.

My prayer is simple: May you continue to grow in knowledge, in wisdom, and in favor with God and mankind. Ave! atque vale!

ARTHUR ALAN VALL-SPINOSA.

*Student Administration*

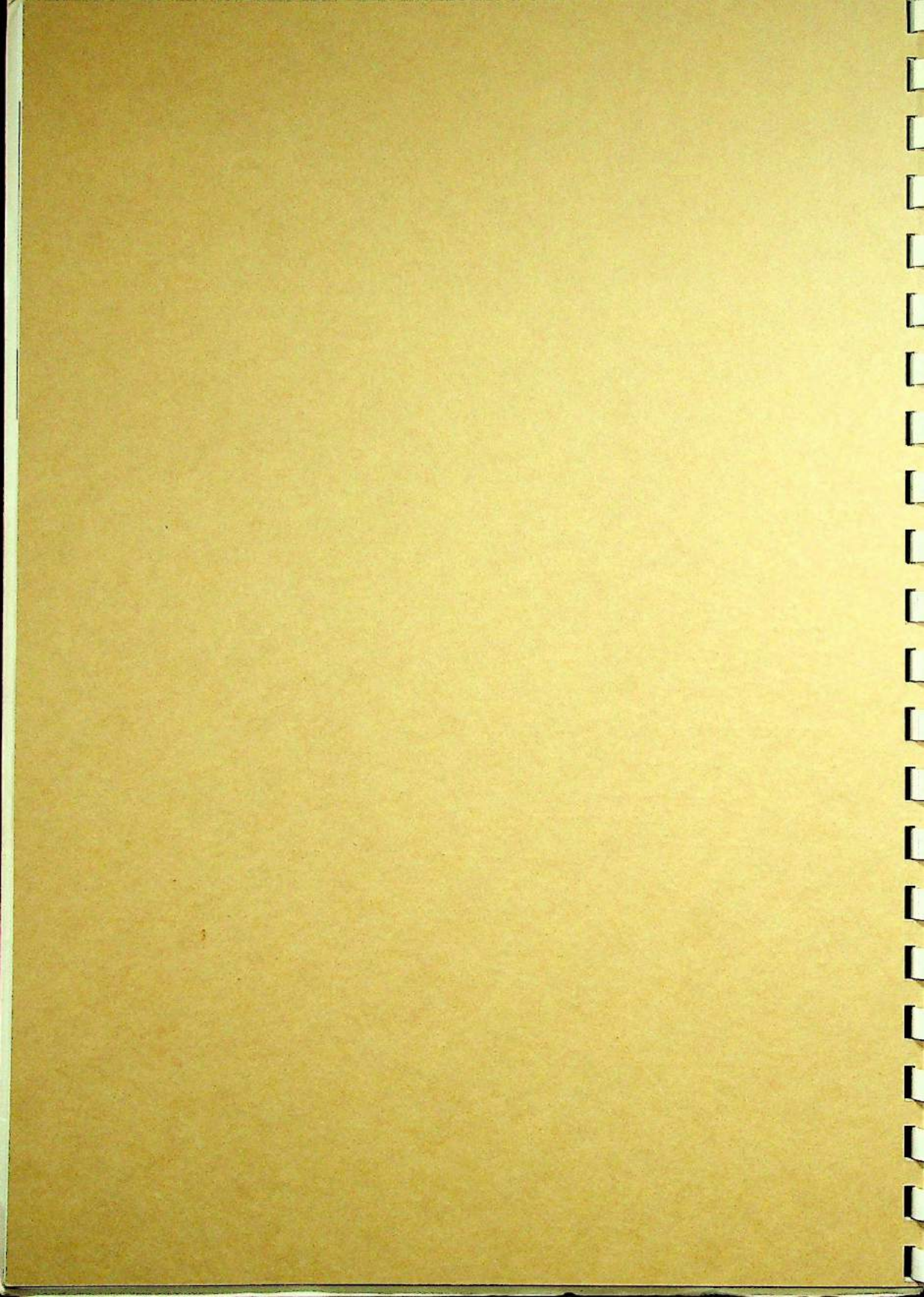
If you can't be a bush be a bit of  
the grass,  
And some highway happier  
make:  
If you can't be a muskie, then just  
be a bass—  
But the liveliest bass in the lake!



Handwritten text, possibly a signature or a note, located below the wavy lines.



Handwritten text, possibly a signature or a note, located below the small sketch.



To a smiling bit of sunshine,  
with lovely black hair —  
Frances

# Student Body Officers



Frances Chaney, President

It made me so  
very happy to  
have you with  
us this year!  
Lots of love,  
Pat



Patricia Simmons, Vice-President

Again a lovely, friendly  
girl. Frances



Ruth Page  
Treasurer



Helene Harding  
Secretary



Carol Haskins  
Sergeant-at-arms



Audra Haffenden  
Editor, Hall Tree



Jane Deacon  
Sophomore Representative



Robin Oulton  
Sophomore Representative



Mary Ellen Foland  
Freshman Representative



Caroline Holloway  
Freshman Representative

Books ok  
I hope all  
will be  
happy  
to  
have  
me  
back  
to  
school

Best wishes, Frances  
Caroline

We're glad  
you wanted to  
graduate with us  
Frances  
Muriel



# Sophomore Class Officers

Muriel Eddy, President

It's been fun  
knowing you, Frances.  
Best wishes  
Maxine Chu



Renee  
Folquet

Helen Robertson

Maxine Chu  
Vice-President  
Renee Folquet  
Sergeant-at-arms

Ruth Hetrick  
Secretary-Treasurer  
Helen Robertson  
Editor, Scintilla



Elizabeth Annreiter  
Delta Psi Omega  
Advertising manager, Scintilla  
Dynamic

Margaret Allen  
Calm



Jean Bateman  
International Relations club  
Serene

Mary Eleanor Bedwell  
Angeles  
Curie, president  
Forum  
Hospital

*Best of luck, Frances,  
and remember Curie!  
Mary Eleanor*



Bette Blake  
International Relations club  
Frank

Luise Broleen  
Curie  
Chairman of finance committee,  
sophomore class  
Loyal

*Bette Blake*



Mary Butler  
Angeles  
International Relations club,  
fall term president  
Studio club, vice-president  
Exuberant

*Frances  
is swell girl -  
I'll never  
forget. It's been a  
wonderful two  
years in all of  
it - Mary.*

Carmelita Chambers  
International Relations club  
Forum  
Sparkling

*Carmelita Chambers.*

*Note of love to a  
Princess girl - Jim M  
his 4 year. Show  
classy*

**Dorothy Jean Calderwood**

Delta Psi Omega, vice-president  
Curie  
Forum  
International Relations club  
Dignified



**Frances Navarre Chaney**

Student body president  
Freshman representative  
Angelas  
Press club  
Hall Tree staff  
Beautiful



**Maxine Chu**

Vice-president sophomore class  
Angelas  
Curie, vice-president  
Forum, vice-president  
Happy



*Dear Frances  
I am very  
glad that you  
are one of my  
classmates  
of such many  
great interests  
you may be  
Bobby*

**Irene Dalrymple**

Photography editor, Scintilla  
Hall Tree, managing editor  
Understudy, secretary-treasurer  
International Relations club  
Press club



**Ruth Davis**

Pleasant



**Jane Elizabeth Deacon**

Freshman representative  
Sophomore representative  
Angelas  
Delta Psi Omega, president  
Idealistic



**Muriel Eddy**

President, sophomore class  
Forum, secretary  
Curie  
Athletic Association  
Generous



**Renee Folquet**

International Relations club  
Feminine





Dorothy Furst  
Art editor, Scintilla  
Tranquil

*M. Grozan*  
Marie Grozan  
Brilliant



Audra Marie Haffenden  
Activities editor, Scintilla  
Hall Tree, editor, fall 1940  
International Relations club  
Studio club  
Press club  
Individual

Joan Hall  
Curie  
Forum  
Amiable

*Lots of luck,  
Joan*



Ruth Hermitage  
Effervescent

*Some books to  
graduate with me.  
Dorothy*

Dorothy Hermann  
Sports editor, Scintilla  
Curie  
Forum  
Athletic Association  
Friendly



Ruth Hetrick  
Secretary-treasurer, sophomore class  
Manager school store  
Press club, president  
Curie  
Poised

Lornelle Kennedy  
Curie  
Winsome

*Lornelle Kennedy*

Gertrude May Key

Athletic Association, president  
Angelas  
Nelson Shield  
Curie, treasurer  
Enthusiastic

*Lots of luck  
to a swell girl.  
Joy*



Dorothy Lilly

International Relations club,  
vice-president and librarian  
Angelas girl-of-the-month award,  
March, 1941  
Jocular

*Frances - I'm  
so glad I know  
you - best of  
everything -  
always Lilly*



Eloise Loveridge

Delta Psi Omega  
Curie  
Graceful

*Lots of luck  
to you  
Loveridge*



Dorothy McBreen

Forum, president  
Sincere

*Dorothy McBreen*



Mary Lou Moore

Forum, treasurer  
Curie  
Athletic Association  
Wholesome



Charlotte Bernice Mosler

Tolerant

Frances Namba

Curie  
Pacful

*Frances - it has been  
fun knowing you -  
best of wishes for  
your happiness &  
good luck to  
you!*

Gene Nelson

Cordial





**Beverly Nordean**

International Relations club  
Forum  
Curie  
Sympathetic

**Jeanette Irene Olson**

International Relations club  
Forum  
Debonair

**Robin Oulton**

Sophomore representative  
Angelas  
Studio club, president  
International Relations club, vice-  
president fall term  
Fascinating

**Ruth Page**

Student body treasurer  
Curie  
Captivating

**Margaret Bengta Peterson**

Forum  
Curie  
Capable

*Write that  
please by Jan  
Frances, good luck  
in all you do in  
spirit of the year for  
us and our class by  
making all my  
love  
John*

**Thora Frances Prideaux**

Forum  
International Relations club  
Athletic Association  
Straightforward

**Helen Jean Richards**

Curie  
Perceptive

*Don't wish for a  
long & happy future  
Helen Jean*

**Joyce Roberts**

Fencing club, president  
International Relations club,  
president  
Press club  
Curie  
Buoyant

Rachel Robinson  
Witty

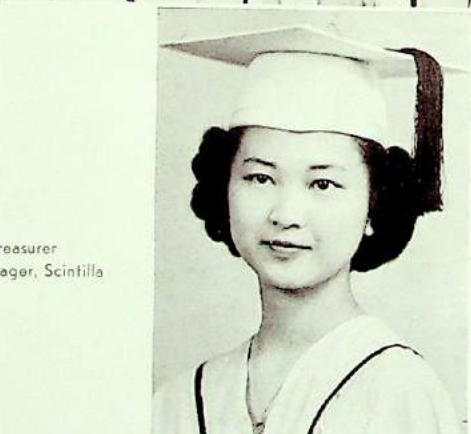


Helen Robertson  
Editor, Scintilla  
Understudy Club  
Press club  
Charming



Patricia Simmons  
Student body vice-president  
Angelas  
President, student council  
Delta Psi Omega  
Gracious

Mary Frances Woerner  
Sergeant-at-arms, freshman class  
Imaginative



Yoshi Yoshizawa  
Curie  
Forum  
Press club, treasurer  
Business manager, Scintilla  
Vital



*Traves, knowing you  
has been a perfect  
experience. I hope it  
may last beyond this  
year.*

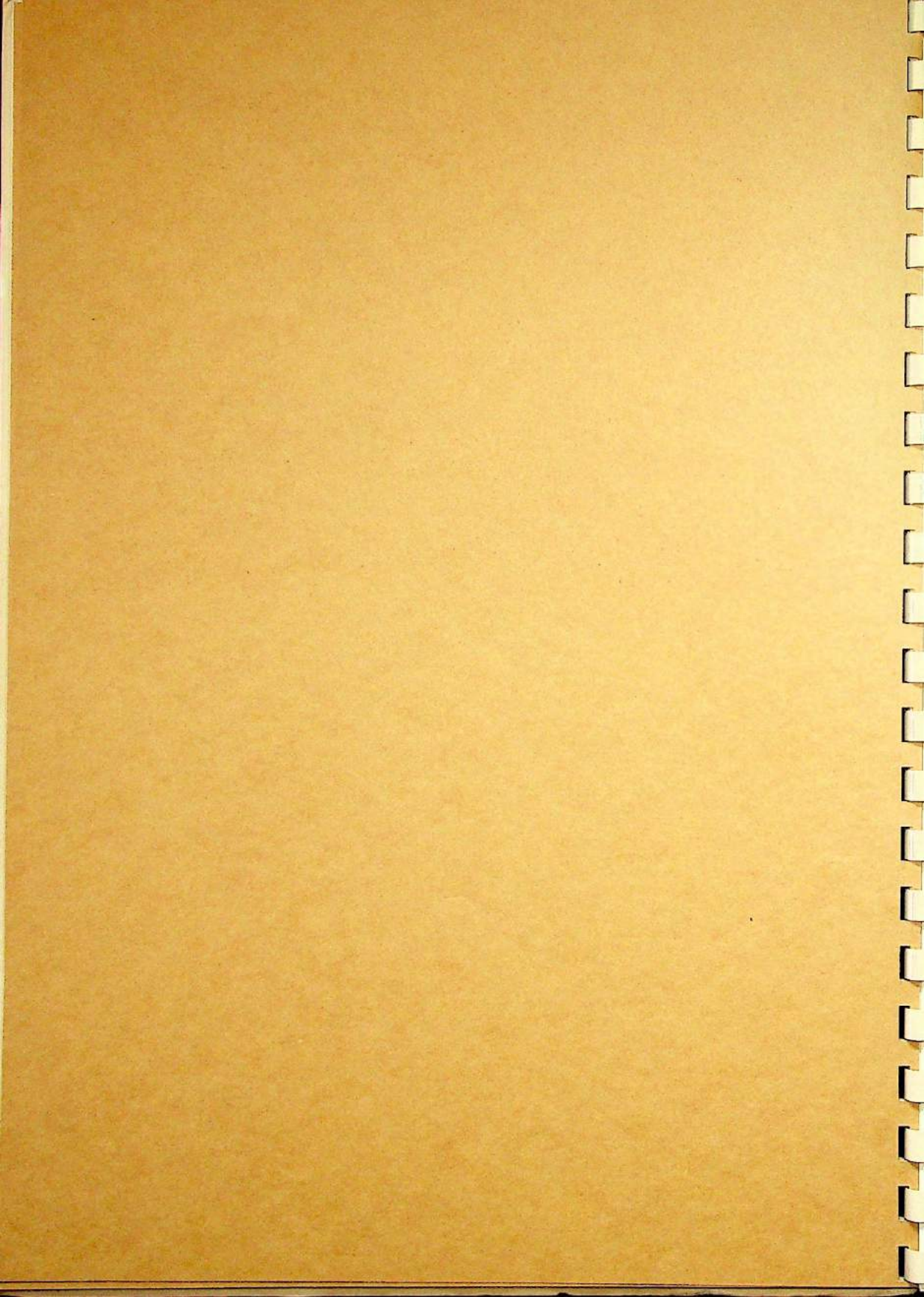
*To Traves -  
My best wishes  
are with you always -  
Most sincerely,  
Yoshi*

*Activities*

We can't all be captains; we've  
got to be crew;  
There's something for all of us  
here.

There's big work to do and there's  
lesser to do,  
And the task we must do is the  
near.





# ANGELAS



M. Bedwell, M. Chu, G. Kay, M. Butler, R. Oulton, F. Chaney, J. Deacon, P. Simmons, Mrs. Fariss

IN memory of the inspirational life of Sister Katherine Angela, Angelas came into being last year at St. Helen's Hall Junior College. Angelas is a sophomore service honorary, representing those fine qualities of womanhood so realistically evidenced in the life and character of Sister Katherine Angela. Truth, goodness, leadership, and generous service are the virtues symbolized in the blue Maltese Cross, emblem of Angelas.

Angelas members seek to serve the college and their fellow students in countless ways. Their first efforts were toward helping to provide a happier and more satisfactory adjustment to college life on the part of new students. With this end in view, members of Angelas made innumerable calls on entering students during the summer. They also planned all of the activities of Freshman Week and were directly in charge of the events of this opening week.

During the year, particularly at the time of the Thanksgiving and Christmas holidays, Angelas has reached outside the college itself, extending its ideal of service to those in need of help. The families "adopted" by Angelas at both Thanksgiving and Christmas received abundant food, toys, clothes, and good cheer.

The Angelas award to a girl-of-the-month, one who has given quiet and unostentatious evidence of her cooperation, friendliness, and loyalty to the school, was first given in March and has been received by three girls during the spring.

The year's activities ended with the impressive tapping of new members at the Torchlight procession, followed by the annual initiation.



# DELTA PSI OMEGA



Third Row: E. Annreiter, Y. Prather, P. Simmons, C. Holloway. Second Row: Miss Bowers, G. Gage. First Row: D. Calderwood, J. Deacon, E. Loveridge.

## OFFICERS

President	- - - -	JANE DEACON
Vice-president	- - - -	DOROTHY CALDERWOOD
Secretary-treasurer	- - - -	GEORGIE LOU GAGE
Adviser	- - - -	CAROLYN GORDON BOWERS

AS members of Delta Psi Omega, national honorary fraternity in dramatic art, the Sara Siddons chapter strives to maintain within the college an active interest in the creative art of the theatre. Membership is granted only to girls who have proved themselves worthy by selfless participation in dramatic projects and by their maintenance of high personal and scholastic standards.

Delta Psi Omega projects during the current year have been varied. An evening of melodrama was given for the entertainment of new students during Freshman Week. On October 30, as the fourth annual Stunt Night program, two Chinese plays were presented in traditional manner. Chinese music was played; and rice cakes, candied ginger, and specially blended tea were served during the intermission. In March, in conjunction with the Understudy club, which is sponsored by Delta Psi Omega, an assembly was given for the student body. The program was in the form of a panel discussion concerning the importance of the theatre and screen as agents of effective emotional propaganda during the present international crisis.

Special social events of the year included a reunion party for active members and alumnae during the Christmas holidays; a dinner meeting for the Understudy club; and the traditional Awards' Tea, which was held May 17. At that time, awards were presented for outstanding contributions made by students to the dramatic life of the college.

Delta Psi Omegas pinned pledge ribbons on ten girls and formally initiated three new members in March. The last two events on the Delta Psi Omega calendar were the second formal initiation ceremony held May 31 and the pledging of new members on Sunday afternoon, June 1.



*13 of 17 girls  
 1941  
 I hope you  
 will enjoy  
 and hope to see  
 you again  
 in the future*

# UNDERSTUDY CLUB



*Edith Madsen  
 and  
 Barbara Bradshaw*

Standing: V. Madsen, L. Myers, V. Caskey, H. Robertson, C. Haskins, S. Nusom, A. Redman, E. MacDonald, B. Miller, M. Israel, B. Hollopeter. Seated: M. Foland, N. Hallock, I. Dalrymple, H. Kowitt, A. Bradshaw, H. Harding, M. Black, M. Sullivan, D. Ashkar.

*Let's all meet  
 and discuss from  
 in new friends  
 Nancy*

## OFFICERS

### FIRST SEMESTER

- President - - - NANCY HALLOCK
- Vice-president - - VIVIENNE MADSEN
- Secretary-treasurer - IRENE DALRYMPLE
- Publicity manager - HARRIET KOWITT

### SECOND SEMESTER

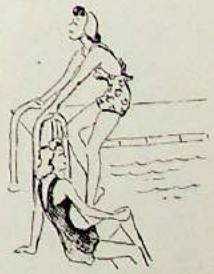
- President - - - AILEEN BRADSHAW
- Vice-president - - HARRIET KOWITT
- Secretary-treasurer - HELENE HARDING
- Publicity manager - ARDYS REDMAN

Adviser—CAROLYN GORDON BOWERS

THREE years ago, Understudy was organized for first-year dramatics students by Delta Psi Omega. Each year since, it has been reorganized and has grown enough in membership to make itself increasingly important to the drama of the school.

Members serve as the stage crew for all dramatic productions. Each month they hold a business meeting at the college and a social meeting at a member's home. Scenes are presented by members at these social meetings, and occasionally a guest speaker talks on some phase of dramatics. Activities this year included a candy sale at Christmas and joint sponsorship of a dance with Studio club in April.

For their annual gift to the dramatics department, members have renovated all the stage furniture and presented several new pieces to the department.



# CURIE

*Handwritten note in top right corner:*  
 The Curie members  
 are proud to  
 present to you  
 the members of  
 the Curie Club  
 for the year 1934-35.



Fourth Row: M. Morioka, F. Namba, Dorothy McBreen, E. Williams, D. Calderwood, R. Folquet, M. Eddy, Y. Yoshizawa, M. Ichiba, M. Scroggin, L. Kennedy. Third Row: N. Hallock, D. Hermann, M. Moore, E. MacDonald, C. Haskins, G. Nelson, B. Nordean, H. Richards, L. McCamey, J. Hall, J. Allen, Y. Prophet. Second Row: R. Page, L. Broleen, B. Sternberg, H. Kowitz, Miss Pettibone, Dr. Bahrs, Miss Chapman, F. Epperly, M. White, B. Miller, R. Weil. First Row: I. Dalrymple, M. Chu, M. Bedwell, Dorris McBreen, G. Kay, R. Hetrick, J. Roberts.

*Dear Frances,  
 It's been grand  
 knowing you. I  
 enjoyed reading  
 the Curie news  
 you wrote - surprise.  
 Fred Williams*

### OFFICERS

- |                |   |
|----------------|---|
| President      | MARY ELEANOR BEDWELL  |
| Vice-president | MAXINE CHU  |
| Secretary      | DORRIS McBREEN  |
| Treasurer      | GERTRUDE KAY  |
| Advisers       | DR. ALICE M. BAHRs, MARION PETTIBONE, CLARA CHAPMAN,<br>JANE ARMENTROUT |

THE highlight of the year for the science honorary was the Oregon Student Science Conference at Linfield college on April 26. Enid Williams, who had been assisted in her experiment by Luise Broleen, won second prize in the biology section for her paper on "Methods of Weight Reduction". Papers were presented also by Ruth Page and by Mary Lou Moore and Dorothy Hermann.

At Curie's assembly in April, Fred W. Cleator of the Forest Service illustrated with colored slides his talk on the Cascade and Skyline Trails in Washington and Oregon.

Fall activities included a field trip to the lava caves near Battleground and a weekend trip to Nelscott. With pleasant weather offering encouragement, the members hiked at Eagle Creek in February. Outside meetings and initiations were held at members' homes.

In May, Curie and the zoology class, for the final trip of the year, collected specimens at the Oregon beaches.



# INTERNATIONAL RELATIONS CLUB



Fourth Row: M. Israel, H. Watkins, N. Hallock, P. Sharpe, M. Wanzer, M. Povey, E. Beach, R. Folquet, B. Sternberg, B. Hudson.  
 Third Row: H. Robertson, N. Steadman, T. Prideaux, D. Calderwood, M. Butler, R. Oulton, M. Eckman, M. Black, H. Harding, J. Ward, C. Mosler, P. Waterhouse, R. Weil. Second Row: J. Olson, D. Owen, J. Nelson, G. McNeil, H. Kowitz, A. Bradshaw, V. Madsen, J. Gray, M. Sullivan, D. Ashkar. First Row: D. Shekter, A. Haffenden, I. Dalrymple, J. Roberts, D. Lilly, M. Thorp, V. Smith, M. Gueffroy, C. Stuart, R. Hetrick.

## OFFICERS

FIRST SEMESTER		SECOND SEMESTER	
President	- - - MARY BUTLER	President	- - - JOYCE ROBERTS
Vice-president	- - - ROBIN OULTON	Vice-president	- - - DOROTHY LILLY
Secretary	- - - VERNA SMITH	Secretary	- - - MARY THORP
Treasurer	- - - IRENE DALRYMPLE	Treasurer	- - - VERNA SMITH
Adviser — ESTHER BURCH			

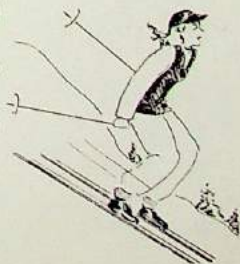
THE International Relations club is organized by the Carnegie Endowment for International Peace and receives current books and information on world affairs and problems from that organization. Its purpose is to encourage the study of international relations.

The club's annual dance was held in November, with an "America in the News" theme providing a timely and colorful background.

Audra Haffenden and Doris Mae Owen were the delegates to the Northwest Regional International Relations Club Conference of College Students, which met in March at the College of Idaho. Audra presented her paper on "British and German Imperialism". As a result of new ideas brought back from the conference, panel discussions on vital world affairs were held at each meeting during March, April, and May.

Miss Ann Reed Burns spoke on "Modern Political Mexico" at the club's assembly in March. Miss Burns had recently returned from an extended stay in Mexico.

The last event of the year was a visit to McLoughlin House, followed by a tea at Barclay House in Oregon City.



# STUDIO CLUB

*Just W.*



Third Row: B. Hollopeter, D. Shekter, B. Allison, D. Johnson, J. Allen. Second Row: J. Gray, A. Haffenden, H. Watkins, D. Owen, M. Black, N. Fitzmaurice, P. Waterhouse, D. Hansen. First Row: M. Thorp, B. Sternberg, R. Oulton, B. Hudson.

## OFFICERS

President	- - - - -	ROBIN OULTON
Vice-president	- - - - -	MARY THORP
Secretary-treasurer	- - - - -	BETTY STERNBERG

*"Life is sweet because of the friends we've made." Best wishes always. Bobbie*

INAUGURATING a new policy of cooperation with other school clubs, Studio club acted as an art service organization throughout the year. The members helped make the dance bids for the school informals. They also made British War Relief posters and programs for Delta Psi Omega's Stunt Night.

Meetings of the club were held twice a month, one business meeting at school and one social meeting at a member's home.

The Studio club's assembly in March presented Miss Virginia Strong of the Portland Art Museum. Miss Strong acquainted the students with the organization and services of the museum.

As a final social project, Studio members collaborated with Understudy members to present an informal dance. The girls' cotton and silk prints and the men's sport coats and slacks presented a colorful picture against the background of spring blossoms and greens. Bob Hamill's orchestra provided the music.



# SCINTILLA



Y. Yoshizawa, S. Casebeer, M. Butler, E. Arnreiter, H. Robertson, I. Dalrymple, J. Cordova, D. Hermann, D. Furst, A. Haffenden.

## STAFF

Editor	- - - - -	HELEN ROBERTSON
Assistant editor	- - - - -	SHIRLEY CASEBEER
Business manager	- - - - -	YOSHI YOSHIZAWA
Advertising manager	- - - - -	ELIZABETH ARNREITER
Artist	- - - - -	DOROTHY FURST
Photography editor	- - - - -	IRENE DALRYMPLE
Literary editor	- - - - -	JANICE CORDOVA
Activities editor	- - - - -	AUDRA HAFFENDEN
Sports editor	- - - - -	DOROTHY HERMANN

EACH year the graduating class undertakes the publishing of the college annual, the *Scintilla*. The consistently high standards of the books have been due to tireless effort and constant sacrifice of free time by the members of the staff.

The nominees for editor, business manager, and advertising manager are approved by the journalism department and are elected by the sophomore class. Since the book is primarily the sophomores' project, they elect their classmates to these positions. Other staff members are named by the editor and advertising manager.

This year, particularly, the freshman class should be commended for its willing support whenever called upon.

The advertising staff consisted of Mary Butler, assistant manager, and Dorothy Lilly, Nancy Hallock, Helene Harding, Caroline Holloway, Mary Ellen Foland, Carol Haskins, Betty Sternberg, Yvonna Prather, Jeanette Olsen, Mary Francis Sullivan, Pat Waterhouse, Beverly Hudson, Harriet Kowitz, Eloise Loveridge, Beverly Nordean, Luise Broleen, Frances Chaney, and Nancy Fitzmaurice.



# FORUM



Third Row: M. Bedwell, M. Chu, Rev. Vall-Spinosa, E. MacDonald, E. Williams. Second Row: Y. Yoshizawa, Dorothy McBreen, H. Watkins, J. Hall, M. Eddy, M. Moore, D. Hermann, H. Richards. First Row: J. Olson, B. Nordean, T. Prideaux, N. Steadman, D. Calderwood.

## OFFICERS

President	- - - - -	DOROTHY McBREEN
Vice-president	- - - - -	MAXINE CHU
Secretary	- - - - -	MURIEL EDDY
Treasurer	- - - - -	MARY LOU MOORE
Advisers	- - - - -	MARY HOBSON, THE REV. ARTHUR A. VALL-SPINOSA
Student advisers	- - - - -	JOAN HALL, BETTY HARDER

FORUM members have endeavored to promote and apply religion civically and personally during the year. Speakers have included the Rev. Richard Flagg Ayers, the Rev. Frederick MacDonald, the Rev. Harold V. Myers, all of Portland, and the Rev. Newton Pemberthy of Hillsboro.

During the Christmas holidays club members met for a banquet at the Bohemian. Following the banquet, they went to the Morningside hospital, where they gave a Christmas party, complete with decorated trees and gifts for the children there, and sang carols through the hospital.

During Lent members made first aid equipment and bought gowns for the Hudson Strait hospital at Ft. Yukon, Alaska.

Once a month the girls had a communion service, followed by breakfast with Sister Superior.

A weekend party at Everglades during May was the climax of the year's program.



# PRESS CLUB



Third Row: C. Stuart, A. Haffenden, H. Kowitt, H. Robertson, D. Shekter. Second Row: J. Roberts, B. Miller, R. Weil, A. Redman, G. McNeil. First Row: Y. Yoshizawa, J. Gray, I. Dalrymple, R. Hetrick, F. Chaney, G. Nelson.

## OFFICERS

President	- - - - -	RUTH HETRICK
Vice-president	- - - - -	FRANCES CHANEY
Secretary	- - - - -	JEANNA GRAY
Treasurer	- - - - -	YOSHI YOSHIZAWA
Adviser	- - - - -	HOMER CHAMBERLIN



## HALL TREE STAFF

C. Hudson; S. Casebeer; C. Mosler; H. Kowitt; G. McNeil; A. Haffenden, editor; F. Chaney, made-up editor; I. Dalrymple, business manager; A. Redman, production manager.

STUDENTS interested in journalism and wishing to further their knowledge of newspaper work comprise the membership of Press club. The group sponsored printed issues of the *Hall Tree* as its project for fall and spring terms. Bi-weekly business meetings were held.

Ralph Vincent, *Journal* photographer, was the guest speaker at the annual dinner at Henry Thiele's in March.

On May 13, the club sponsored its annual Cotton Day. Prizes were given to the girl wearing the most attractive home-made cotton dress and to the one wearing the outstanding purchased dress. Hon-

orable mention was given to the runner-up in each division.

For its assembly program, Press club presented Miss Gwladys Bowen, society editor of the *Oregonian*. Miss Bowen related many of her experiences as a newspaper woman.

A project at the opening of the school year was the sale of stickers bearing the school seal. These were especially attractive to freshmen and new students.

# GLEE CLUB

*Book and  
halfpenny to  
see well gal.  
Love  
Doris*

*Best  
always  
I will  
have to  
vetter  
me  
and*



Second Row: M. Eckman, V. Smith, M. Sullivan, D. Owen, Mrs. Hildenbrandt, J. Gray, J. Whitmore, C. Holloway, M. Foland.  
First Row: N. Steadman, M. Black, G. McNeil, M. Miner, N. Hallock.

## OFFICERS

President	- - - - -	YVONNA PRATHER
Vice-president	- - - - -	JEANNA GRAY
Secretary	- - - - -	JOAN WHITMORE
Treasurer	- - - - -	DORIS MAE OWEN
Adviser	- - - - -	ANNE HILDENBRANDT

*Best of luck  
letter rep. us  
The teacher  
Doris Mae*

THE Glee Club's first performance of the school year was for the December meeting of the Mothers' club. The program included "Jesu Bambino", "God Rest Ye Merry Gentlemen", and "Prayer from Hansel and Gretel." The same program, with the addition of several familiar carols, was presented for the student body Christmas assembly.

The main project of the year was a program of classical and light musical numbers, presented with the assistance of the junior college and high school modern dancing groups during May. Proceeds from the concert were used to start a permanent music library for the Glee club.

Joan Whitmore and Doris Balzimer served as accompanists during the year.



# ATHLETIC ASSOCIATION



Second Row: M. Scroggin, M. Eddy, D. Hermann, G. Kay. First Row: J. Gray, M. Moore, R. Weil, Dorris McBreen, E. MacDonald.

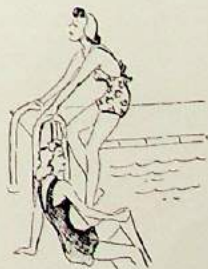
## OFFICERS

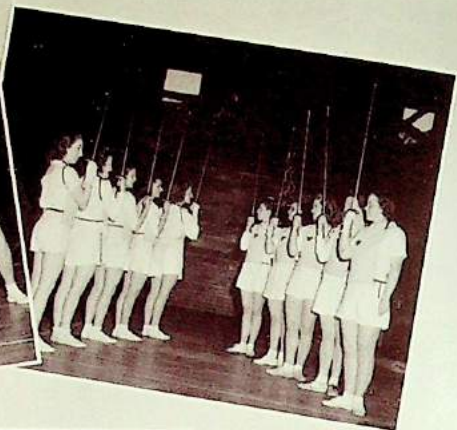
President	- - - - -	GERTRUDE KAY
Vice-president	- - - - -	DORRIS McBREEN
Secretary-treasurer	- - - - -	ROSANNE WEIL
Adviser	- - - - -	MARY HOBSON

THE Athletic Association completed one of its most successful years, reaching its climax in the sponsoring of the May Carnival on May 1.

The club consists of the entire student body of the junior college. Girls taking part in each sport elect their own chairman, who automatically becomes a member of the Athletic Association council. This council advanced the purpose of the Association, to further physical education. The chairmen elected this year were as follow: volleyball, chairman, Mary Lou Moore, freshman representative, Marilyn Scroggin, sophomore representative, Muriel Eddy; basketball, Eileen MacDonald; tennis, Jeanna Gray; badminton, Mary Butler; fencing, Joyce Roberts; ping pong, Dorothy Hermann.

The Athletic Association this year awarded two trophies to the girls who were outstanding in all athletics. One of these trophies was given to a freshman; the other is to remain perpetually at the junior college and will have an outstanding sophomore athlete's name engraved on it at the end of each year.





Lower Left: Volleyball: T. Prideaux, G. Kay, M. Moore, C. Hudson, R. Weil, M. Eddy, Y. Yoshizawa. Lower Right: Basketball: J. Clayville, G. Kay, R. Weil, Y. Yoshizawa, M. Chu.

# Athletics...

**Volleyball:** The volleyball team clashed with a new foe at the end of the season, when they played the faculty of the junior college. The faculty showed their skill by defeating the students in two closely contested games.

**Basketball:** The basketball team, although not playing enough games to justify the awarding of letters, furnished excellent entertainment for the gallery when they played the junior college alumnae. The game increased in interest until the final seconds, ending with a tie score of 11-11. Members playing were Gertrude Kay, June Clayville, Eileen MacDonald, Marilyn Scroggin, Maxine Chu, Yoshi Yoshizawa, Rosanne Weil, and Frieda Epperly.

**Ping Pong:** Competition was so keen that the ping pong ladder ended with the three top players still fighting. Awards were presented to the two leading players.

**Badminton:** The Badminton tournament ended with a spectacular match played before the entire student body at the Athletic Association assembly. Letters were awarded to Gertrude Kay, winner; Mary Butler, runner-up; and doubles winners.

**Tennis:** With the coming of the first good weather, tennis fans crowded the courts. A tournament was held during the spring term, and letters were awarded to the winner and runner-up.



# The College Players Present FIRST LADY

by Katherine Dayton and George S. Kaufman  
(By special arrangement with The Dramatists' play service)

FOR the major production of the spring, the College Players presented a rollicking, drawing-room comedy of the women behind politics. The theme of the play was forcefully illustrated by its many and varied feminine characters, who, by fair means or foul, managed to control the government. From the well-bred sarcasm of Lucy Chase Wayne and the low-bred acid of Irene Hibbard, the two most glamorous women in Washington, to the crusading smugness of Mrs. Louella Mae Creevey, president of the Peace, Purity, and Patriotism League, and the beguiling sweetness of Emmy Lou Paige from Mississippi, the playwrights give us the answer to what lies behind a presidential nomination; and the answer is, "Cherchez la femme!"

FIRST LADY was the first production in the modern genre yet attempted by the College Players and so marked another milestone in their program. It also inaugurated a new policy of giving two performances instead of the customary one. The play was revised by the director, Carolyn Gordon Bowers, to meet the needs of the group.

Guest players selected to personify masculine roles included Jack McCliment, George Johnson, and John Groeger.



Seated: L. Kennedy, P. Simmons, E. Arnreiter, H. Robertson. Standing: E. Loveridge, C. Holloway, A. Bradshaw, C. Mosler, J. McCliment, G. Gage, J. Deacon, M. Woerner. Cast members not shown: D. Calderwood, J. Groeger, G. Johnson.

## THE CAST

Sophy Prescott	PATRICIA SIMMONS	Her Friend	AILEEN BRADSHAW
Mary	CAROLINE HOLLOWAY	Mrs. Louella Mae Creevey	MARY FRANCES WOERNER
Emmy Lou Paige	LORNELLE KENNEDY	Senator Gordon Keane	JACK McCLIMENT
Lucy Chase Wayne	GEORGIE LOU GAGE	Irene Hibbard	ELIZABETH ARNREITER
Belle Hardwick	JANE DEACON	Bette	MARY ELLEN FOLAND
Jane Ives	ELOISE LOVERIDGE	Caroline Hibbard	DOROTHY CALDERWOOD
Anne Forrester	HELEN ROBERTSON	Ellsworth T. Ganning	JOHN GROEGOR
Miss Sally Field	CHARLOTTE MOSLER	Jason Fleming	GEORGE JOHNSON

## TECHNICAL STAFF

Business Manager	LUISE BROLEEN	Costume Mistress	AILEEN BRADSHAW
Stage Manager	HARRIET KOWITT	Art Work	CAROL HASKINS; MARGARET BLACK
Properties	CAROLINE HOLLOWAY, chairman;	Stage Crew	DORIS MAE OWEN, DOLORES ASHKAR, VIVIENNE MADSEN
	YVONNA PRATHER; MARY ELLEN FOLAND;		
	NANCY HALLOCK; HELENE HARDING		

## First Nights...

ONE of the most unusual offerings ever attempted by the College Players was the experimental presentation in January of Daphne du Maurier's *Rebecca*. Prepared as the major attraction of the Players' fourth annual Experimental Evening, *Rebecca* was enacted on a two-level stage, against an impressionistic setting. Although the play ran somewhat over an hour in length, the curtains were never drawn. A dimmer was used to black out the stage at the end of each scene; and in the darkness, the voice of the narrator, the second Mrs. de Winter, carried on the thread of the strange, atmospheric tale. An unusual and rather remarkable feat was accomplished by Jane Deacon, who played the second Mrs. de Winter, in that she made three complete and many partial costume changes in the pitch darkness on the stage, while simultaneously maintaining the narrative. Outstanding impersonations were played by Georgie Lou Gage as Beatrice Lacy, Maxim de Winter's sister, and by Elizabeth Annreiter, as old Mrs. de Winter, the deaf grandmother.

The Experimental Evening program also included excerpts, directed and rehearsed by the students themselves, from *Green Grow the Lilacs* by Lynn Riggs, from *Peter Pan* by Sir James Barrie, and from *Stage Door* by Edna Ferber and George S. Kaufman. Lornelle Kennedy as Peter Pan especially delighted the audience with her delicate movements and elfin whimsicality.

A Christmas play was presented by the Players just before the holidays. Patricia Simmons as the Virgin Mary, singing a lullabye over the cradle of the holy babe, beautifully and effectively portrayed the age-old meaning of the Christmas season.

With the May presentation of Dayton and Kaufman's *First Lady*, the college dramatic season came to a close.





Presenting Her  
Royal Highness  
of the  
May Carnival . . .

## Queen Robin I

IN 1935 the Athletic Association planned the first May carnival at St. Helen's Hall Junior College! It was spring. Spring is a time of fetes, and so the now traditional May carnival was appropriately inaugurated during that month. There were the usual booths and concessions, and at this first carnival the choosing of the queen was just another event in the main affair.

The May fete was such a success that the Athletic Association voted to repeat it the following year. In 1936, a dance at the end of the carnival was sponsored by the International Relations club. Hence, the custom arose of concluding the evening with a dance sponsored by some organization.

The 1941 May carnival, ruled by Queen Robin I, has taken an enviable place among the traditional Athletic Association festivals at St. Helen's Hall Junior College.



May Court: Princesses: F. Chaney, J. Deacon, P. Simmons, D. Lilly. Jesters: M. Black, M. Sullivan.

*Frances -  
I'll always remember  
you as a typical 'Nale gal -  
and I love 'em all -  
-Blackie -*

# Junior College Awards...

## HONOR ROLL

First Semester . . . 1940

Yoshi Yoshizawa ..... 3.0      Dorothy Hermann ..... 2.6

### SCINTILLA AWARDS

Typical Candid Picture..... Patricia Simmons  
Campus Candid Picture..... Patricia Simmons  
Everglades Candid Picture..... Audra Haffenden  
School Candid Picture..... Dorothy Calderwood

### DELTA PSI OMEGA AWARDS

Delta Psi Omega Drama Honorary Award for outstanding service throughout the year "behind-the-scenes", for efficiency, dependability, and cooperation, is presented to the freshman whom Delta Psi Omega members consider as having contributed most to the dramatic life of the school, Nancy Hallock.

DIRECTOR'S AWARD . . . . to a member of the Understudy club who has contributed most in a specialized field to the dramatic activity of the college. This year the award is presented to Helen Robertson.

DIRECTOR'S AWARD . . . . to a member of Delta Psi Omega who has most selflessly and consistently participated in all dramatic productions throughout the years of college work, tirelessly working on small details as well as on larger projects, holding only one goal in mind, that of advancing college dramatics. This award goes to Dorothy Calderwood.

### FRESHMAN AWARDS

Each year the Nelson Shield is presented to the freshman who has contributed the most to the activities of the school. This year the award goes to Yvonna Prather.

A representative girl is chosen from every freshman class. The choice is the girl whose character, ideals, activities are most truly representative of St. Helen's Hall junior college. This year the award goes to Doris Balzimer.

### ATHLETIC ASSOCIATION AWARDS

FRESHMAN AWARD . . . . to the girl who is outstanding in athletics and has contributed most to the Athletic Association is presented to Rosanne Weil.

SOPHOMORE AWARD . . . . to the girl who has shown loyalty, achievement, and outstanding sportsmanship goes to Dorris McBreen.



*Marian Israel*  
*Sue Morker*  
*Lily Fairbrope*

Third Row: M. Ichiba, K. Tanida, L. Myers, L. Martin, H. Pederson, S. Nusom, G. Janssen, M. Miner, M. White, L. McCamey, J. Ward. Second Row: V. Smith, M. Sullivan, D. Owen, D. Johnson, J. Williams, G. McNeil, H. Kowitz, N. Pierce, R. Weil, D. Shekter, H. Look, J. Whitmore, M. Wanzer. First Row: M. Povey, E. Williams, M. Israel, M. Morioka, B. Korell, C. Morrow, M. Scroggin, V. Madsen, J. Pearson, G. Pancratz.

*at night - Best of Luck, Always.*



*Best of Luck Always*

Standing: M. Cartwright, E. Beach, B. Allison, M. Eckman, M. Black, H. Harding, C. Holloway, J. Gray, B. Harder, N. Hallock. Seated: J. Allen, A. Bradshaw, C. Haskins, D. Balzimer, V. Caskey, C. Hudson, J. Clayville, D. Hansen, D. Ashkar, S. Casebeer, M. Gueffroy.

### Freshmen...

*I hope you get to be an efficient dietitian [Pender] Corday*



January Class of 1941  
 Back Row: G. Gage, A. Redman  
 Front Row: C. Stuart, J. Cordova

*Literary*

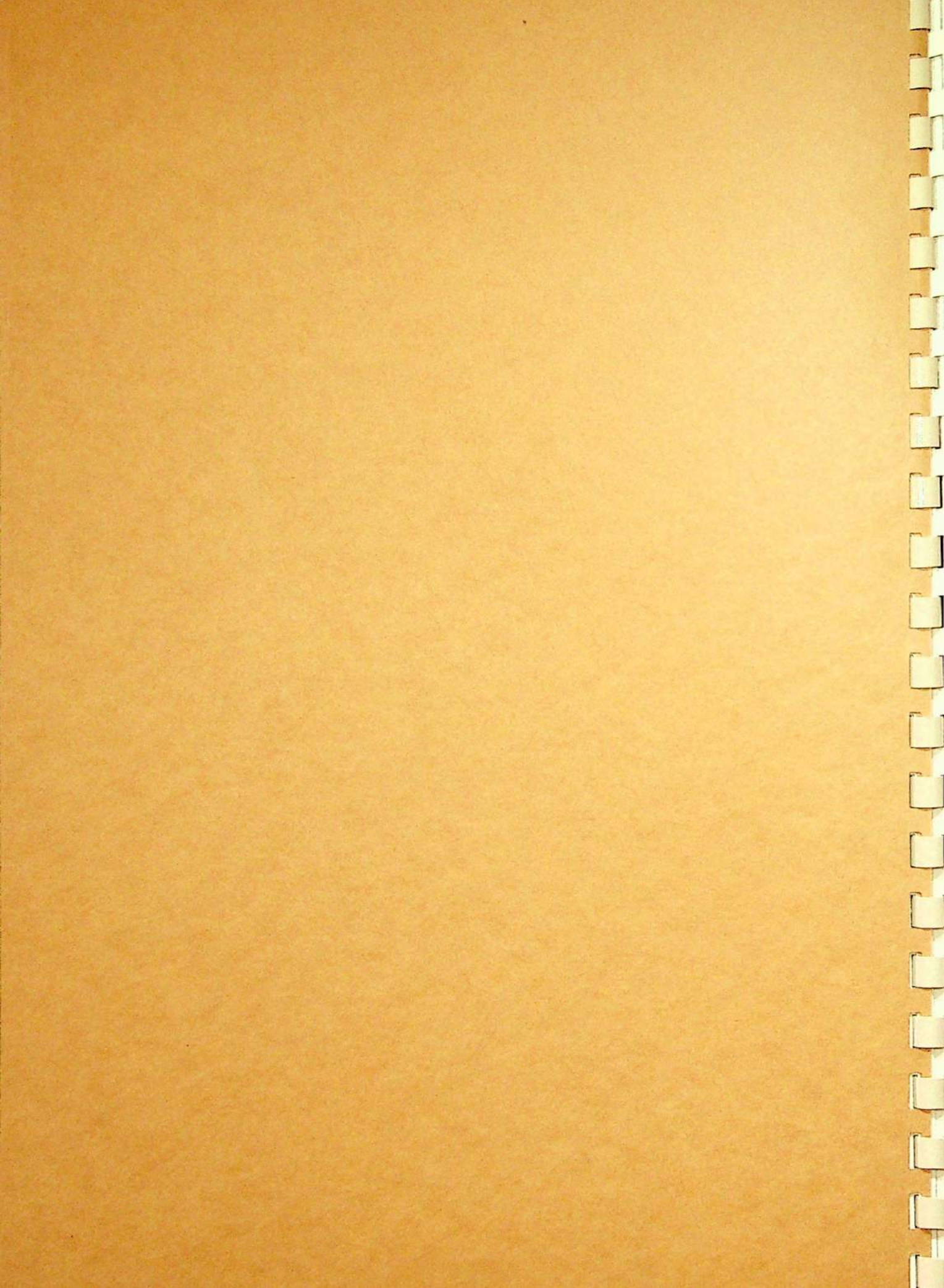
If you can't be a highway, then  
just be a trail;

If you can't be the sun, be a  
star;

It isn't by size that you win or you  
fail—

Be the best of whatever you are!  
Douglas Malloch





## Random Thoughts

ALMOST midnight . . . the house is quiet and peaceful as I sit at my desk. I close the last book and push it gently aside. Turning the lamp low, I lean forward to the wide-open window before me and momentarily catch the breath of early spring in the soft night air. I relax and feel the enveloping stillness and tranquility of night. Then it is that random thoughts come to me, weaving their pattern of reminiscence and reflection.

The soft night breeze drifts in, and its very softness and coolness recall another night such as this . . . the night we went to hear a charming Negro soprano's concert. Our seats were located high above the others; the auditorium was crowded with enthralled listeners, but the music touched us until those around us faded away, and the singer seemed to direct her songs to us alone. I remember how we left the concert, filled with rich music. We were unwilling to lose the deep, esthetic enjoyment we had found, and so we drove far into the night until we came to a quiet place high on the hills, from where we could look deep into the valley; here, under the heaven's midnight blue sprinkled with metallic starlight, we recaptured a portion of the fullness of beauty in the music we had shared. That night was like this . . . soft and cool and infinitely peaceful.

Midnight . . . the wind is stirring now, and it ruffles the window curtains over a group of books which line one side of my desk. I catch the neatly-printed title of a small volume—Robert Nathan's *Autumn*. Many times I have read its pages, finding them full of simple but rich truths, expressed in quiet wisdom and philosophy. I recall one passage . . . "What are the good things of life . . . ? Love, peace, the quiet of heart, the work of one's hands. Perhaps it is human to wish for more. But to be human is not always to be wise." Here, indeed, is food for thought.

Past midnight . . . I snap off the lamp and let the pale glow of starlight melt into the room. I look up to the star-studded sky and a deep wonder fills me—wonder and awe in the thought that these same stars have been with the world from the very moment of its creation. What a great parade of humanity they have seen; what change and chaos and progress of man they have witnessed. Yet they remain shining and unwavering as ever, calmly surveying all that goes on below them. I wonder if they hear the hopefully whispered appeals of little children as they turn their young faces heavenward in naive faith . . . "starlight, starbright, first star I see tonight; I wish I may, I wish I might have the wish I wish tonight." I wonder if they feel the constant gaze of the star-splitters who, armed with man-made telescopes and similar devices, attempt to read the mysteries that lie above. I wonder if these same stars are touched by the invocation of lovers who have found the beauty of starlight reflected in the hearts of their beloved ones. I wonder if they look down on man, ridiculing his ignorant fight against fellow man for gain and power, which is externalized always in cruel wars and heartless persecutions. I wonder . . .

The wind has calmed again. Random thoughts have come and gone, and once more everything seems unruffled and placid in the quiet serenity and peace of deep night; only the occasional whisper of the soft night wind blends with the faint, nocturnal notes of the crickets.

—YOSHI YOSHIZAWA.

### NIGHT

The earth is quiet. It has been lulled to sleep  
by the cricket's song.  
The sleepy wind sighs through the feathery trees.  
High above, the moon is a marble disk against  
The still night sky.  
It moves smoothly, swiftly, on its velvet path.  
The silvered surf pounds beneath it now.  
Soon its path will lie softly on the  
gently swelling sea.

—ELIZABETH ARNREITER



## Nature's Mirror

The day, the place, the scene around—they season all my moods;  
As Nature barter calm for storm, my thoughts are changed in tune.  
A seaward glance will prove the truth that thoughts are sometimes built  
Around the fickle skeleton of nature's changing ways.  
Some days are built for dreams, and some for climbs in dreams to come;  
And some are made for racing with the wind, and racing done,  
For searching far horizons for the answer to this tale.

A golden day, majestic, fit for feasts of ancient lore—  
I feel content with all the world, content with God and man;  
The sun is warm, the breeze is breath—no greed nor hate nor wrong—  
But omnipresent peacefulness of lying on the sand  
With placid satisfaction and security that comes  
In listening to the lazy, lulling lapping on the shore.

And now a day with leaping surf, with flying whirls of sand;  
The indistinct and grayish stretch of sky and water one;  
The quickening, stimulating wind that urges me to search  
For places never seen before—the goal beyond the hill.  
There's inspiration to achieve, for sharp days make clear thought.  
I want to run against the rain that splashes clean my face.  
I want to climb the highest crest and stand against the wind.  
The force around me lends a strength; reality looms near  
To answer every doubt—and understanding joins content.

My mind is always changing in a score of little ways,  
And yet, my every mood still echoes Nature's choice of days.

—JANE DEACON.

## On Time?

SHE was sure it was the right bus because she had looked at the sign in front twice; the conductor had told her it was the right bus when she asked, but as she sat down, a feeling of tension and nervousness still clung to her. This must be the right bus because the conductor had said it was, but would she get there on time? It would be foolish to ask the conductor because, after all, what difference would a few minutes make? She sat rather stiffly on the seat as the bus moved on and noticed that her fingers, of their own accord, were folding and refolding the transfer. Was it warm in the bus, or was she just hot? She looked eagerly at every clock passed and compared it with her watch. Each clock told a different time, and she wondered visibly which one was right and if her own watch were fast or slow. She consciously tried to relax but couldn't for long. That block seemed familiar; was half or a third of the trip left now? Well, if it was late, it was late, and there was nothing to do about it. She flung herself back onto the seat with a provoked frown on her face, studiously looking at the bus advertisements. Gradually her gaze returned to the window. There—that was the block, wasn't it? Yes, it was. She pulled the bell cord and walked calmly and sedately down the aisle to the door.

—JEANNA GRAY.

## DAWN

It is four o'clock in the morning,  
The only sound is the rustle of old newspapers,  
as the wind nudges them along the streets.  
The only watchers are the white-faced mannequins  
behind plate glass windows.  
White, white faced mannequins whose hats slant  
at dizzy angles.

—ELIZABETH ARNREITER

## "Violets?"

"VIOLETS? Violets? Would the pretty lady like some violets?" The crowded restaurant turned a dumb, oblivious back to the little figure who persistently cried his wares. Eagerly he advanced to an obviously in-love couple, and, displaying the purple beauty before the girl's pathetically eager eyes, he whispered, "Violets?" The boy's mute appeal and embarrassed refusal made the little, white-haired vendor clear his throat and hastily move on. The cruel refusal by a scornful woman forced a rebellious surge through his frail, indignant form. If a casual observer would but look closely at him, he would notice, first, bright little eyes of startling blueness, piercingly analytical. Then the onlooker's eyes would travel next to an unusually full lower lip that quivered unmistakably—though its owner would vehemently deny it—when flowers were rudely pushed aside. When the stately little gentleman talked, his white, well-kept, little beard bobbed jerkily up and down. Wistfully he gazed at the well-dressed men who discussed baseball and the stock market between vigorous bites of steak. With a rueful smile he would pick an imaginary speck off his shabbily genteel clothes and then pull his coat tighter over his thin shoulders. Once, at a refusal, more painful because it was disinterested, he paused momentarily and looked at the floor as if something unusual was there. He looked so tiny and so solitary amid the busy life around him. No, that couldn't have been a sob shuddering through his body. Probably he was cold. Then, with a cheery, determinedly gay smile, he lifted his head, proudly took a few steps forward, and called, "Violets? Would the pretty lady like some violets?"

—VIRGINIA CASKEY.

### CLOUD PICTURE

The strands  
Of rainbows soft  
Of colored ribbons stretch  
Across the mussed-up sky to tie  
The clouds.

—JANICE CORDOVA

### RAIN

A beat  
Of jungle drums,  
Or tiny fairy steps,  
Or rhythm, syncopated, slow,  
Is rain.

—JANICE CORDOVA

## Fulfillment

A THUNDER of applause rang in Rhæ's ears as she stood spellbound—gazing into the eyes of her ardent and admiring audience. Her ambition had been won, and now she was experiencing the feelings of which she had always dreamed. Excited shafts of joy darted in and out of her heart, each one plucking a string lightly enough to cause her body to shiver a bit. Tiny thrills raced from the tips of her toes to the very tiptop of her blond, curly head. They tickled her spine and made her whole body tingle with joy. Her heart poured its warmth out to the idolizing group of faces, and it seemed to skip a beat every time the applause broke into an even louder thunder than before. Her heart was surrounded with joyous emotions, each striving for dominance and all of them making Rhæ feel as though her heart were going to burst if they didn't stop chasing each other around. Her whole form seemed to be illuminated by its intense joyousness. For a moment Rhæ felt that she was floating on clouds of glory and that the sound of applause was wind blowing violently into a louder and louder crescendo. She felt that her face was reflecting the feelings which were chasing around in her heart and was trying to contact each adoring face, giving it an expression akin to that feeling in her heart. So great was her joy that she didn't know whether to laugh or to cry. All Rhæ knew was that a worshipping audience had produced a stinging sensation around her heart and that she was experiencing the happiest moment of her life.

—DORIS BALZIMER.



Top left: BEST TYPICAL, P. Simmons. Top center: BEST SCHOOL CANDID, D. Calderwood. Top right: BEST EVERGLADES, A. Haffenden. Second row center: BEST CAMPUS, P. Simmons. The other pictures won honorable mention.



*At Your Service with  
Every Banking Facility*

*The*  
**United States  
National Bank**

Portland, Oregon  
Member F.D.I.C.

**Nicholas VasiliEFF**

School of Classic Ballet

1731 N. E. 33rd - MU. 3334

Classes and private instruction in ballet,  
character and mimo-drama.

Associate of Richard Billings  
School of Dancing.

*Registration open for summer  
courses.*

**SPORTS CRAFT**

Everett A. Philpoe

KODAKS SKIS  
CAMP SUPPLIES

512 S. W. Yamhill

BR. 1153

**LUBLINER**

*Florist*

616 S. W. Morrison

BR. 0559

**HOLMES BUSINESS SCHOOL**

*Individual Advancement*

Edna Steen McCall, LL.B., Principal

Studio Building

Phone 8Eacon 7745



Sugar Crest Doughnut Co., 108 S. E. Grand Ave. - - - Ea. 1494

Karl J. Klein, Jewelers, 610 S. W. Broadway - - - At. 3718

Frank A. Heitkemper, Jewelers, 725 S. W. Alder - - - Be. 6174

Moreland Bakery, 6808 S. E. Milwaukie - - - - La. 2055

Neubauer's Grocery and Bakery, 1735 S. W. 11th - - - Be. 6718

L. D. Heater Music Co., 1001 S. W. Morrison - - - Br. 4364

Westall Deacon Studio, 1698 S. W. Montgomery - - - At. 7803

Oscar Auestad, 315 S. W. Pine - - - - Be. 4347

Davis Button & Pleating Shop, 734 S. W. 10th Ave. - - - Be. 9754

*Chumley "Play-timers" . . .*

are the good looking play clothes you'll live in this summer!  
The shorts, the slacks, the play suits that are young!  
fun! and different!

*Chumley "Play-timers" are exclusive with*

**CHARLES F. BERG**

**THE BUSH PHARMACY**

Corner S. W. 11th and  
Montgomery

*Prescriptions . Fountain . Magazines*

•

Phone BEacon 6726      Portland, Oregon

**NAMES-BOLING BUSINESS  
SCHOOL**

*Complete Secretarial Course*

604 Woodlark Bldg.

BEacon 6784

Night Classes Tuesday and Thursday

*Always Exceptional Food at*

**HENRY THIELE'S**

•

Twenty-third at Burnside

**SUNFREZE**

*"Old Fashioned Goodness"*

*Congratulations to the Graduating Class of 1941*

**DORE**

Studio of Photography

Pittock Block

BEacon 3544

Portland, Oregon

# WHEELER-HALLOCK CO.

Lumber and Shipping

S. S. SAMOA

ATwater 9305

Pittock Block

LEWIS & DALIN, Inc.

Portland, Oregon

*Compliments of*  
EDWARD HINES PACIFIC  
COAST LUMBER CO.

Portland      -:-      Oregon

WESTPORT LUMBER CO.

*Flowers*

TOMMY LUKE

*Portland's Leading Florist*

Phone ATwater 3131

For 24 Hour Service

ATKINSON & STUTZ CO.  
Wholesale Lumber

112 Market Street      San Francisco

*Compliments of*  
WENDLING-NATHAN CO.  
Wholesale Lumber Products

San Francisco - Portland - Los Angeles

“By mutual confidence and  
mutual aid

Great deeds are done and great  
discoveries made.”

•

Greetings from  
Mothers' Club of St. Helen's Hall Junior College



# THE BANK OF CALIFORNIA

NATIONAL ASSOCIATION

Founded 1864

In Portland . . . S. W. Sixth Avenue and Stark Street

San Francisco :: Seattle :: Tacoma

MEMBER F. D. I. C.

*Portland's Own Store*

Extends  
Congratulations  
To the Class of 1941

❧

*Meier & Frank Co.*  
FOUNDED 1859  
PORTLAND'S OWN STORE

OF COURSE!

you'll want

ARMISHAW'S  
SADDLES

Tan and White  
Black and White

\$4.95

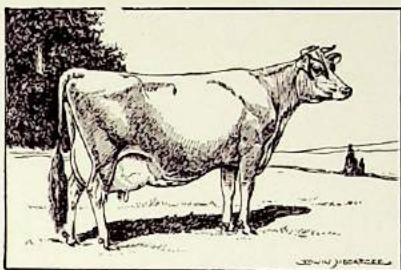
•

ARMISHAW'S  
526 S. W. Park

Featuring . . .

CREAMLINE  
JERSEY MILK

World's Richest Milk  
with  
Extra Proteins



ALPENROSE DAIRY

H. C. Cadonau, Proprietor

Cherry 2424

*Compliments of*  
J. C. PENNEY CO.

O. KORBER  
*Popular Price Jeweler*  
Lasting Gifts Reasonably Priced  
On Easy Terms

*Satisfaction Is Our Motto*  
HILLISON CLEANERS  
1024 S. W. Montgomery Street  
ATwater 6976



GENUINE  
HUARACHES

727 S. W.  
Tenth Avenue

*Nicholas Ungar*

*Compliments of . . . . .*  
WOODY HITE AND HIS  
ORCHESTRA

Congratulations . . . . .  
BEST DRUG CO.  
1850 S. W. 10th Avenue BEacon 5232

LIBERTY FUEL & ICE CO.  
201 S. E. Third  
Standard Furnace Oil  
EAsT 9111  
For Automatic Oil Service





