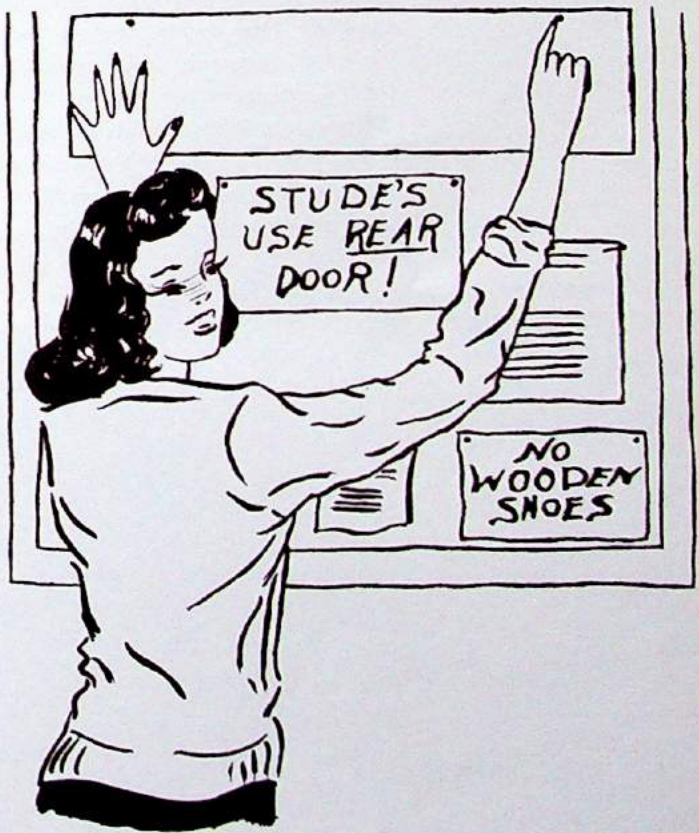




# Scintilla

1942





# RECESSIONAL

(GRADUATES, 1942)

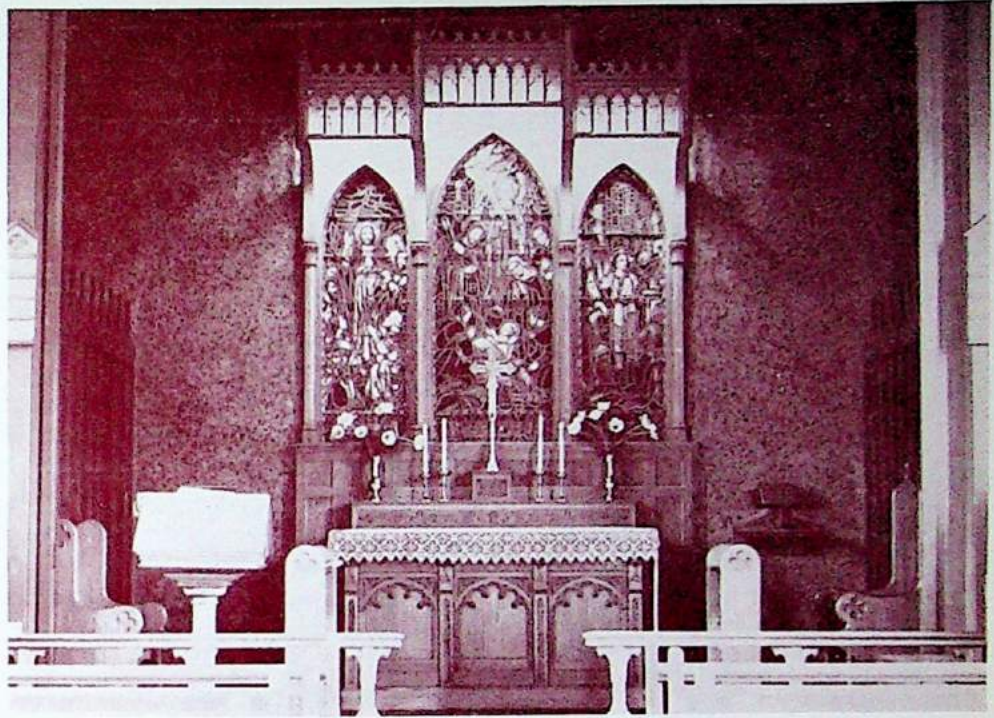
St. Helen's Hall, as now we leave,  
Our voices we lift in your praise—  
Around your dear paths and ivied walls  
Cling the dreams of youth's carefree days;  
And the claims of the years  
Will be blessed by your light  
Which has given us love and Godspeed  
To arm us in life with glory and might,  
And to give us the faith which we need.  
You will not be forgot  
When from you we must part;  
We'll hold high the red and the blue;  
And in the dim future each prayer of our hearts  
Will go winging to heaven for you.

Your chapel breathes peace in a world of strife;  
Your morning-light window is dear;  
Your candles are gleaming like stars in the dark,  
Untouched by the thick fogs of fear.  
Your blossoming trees  
In the first flush of Spring  
Kindle joy for the raptures of youth;  
And all your sweet gardens are fragrant with flowers  
As your classrooms are fragrant with truth.  
May God grant that we be  
What your wish would command,  
Your pillars so polished and strong;  
And in days yet to come we'll think back to you  
And fashion your memory in song!

—C. G. B.



*SPRING COMES TO THE CAMPUS!*



THE

# Scintilla

Volume IX

St. Helen's Hall Junior College  
PORTLAND, OREGON

General Superintendence of  
Sisters of St. John Baptist

—1942—

Because the world outside our school, and outside every school in America, today, is a place of grim uncertainty and chaotic savagery, we dedicate our book to a woman—a woman who occupies a very special place in the heart of every girl who has ever attended St. Helen's Hall junior college. Behind every great school there is a beloved guiding light, and she is ours—a never ceasing spirit of kindness, understanding, graciousness, and all inclusive friendliness. It would be almost impossible to determine the number of instances in which her whole-hearted enthusiasm and interest have been the inspiration for tremendous achievements and have even determined the entire course of a Hall girl's future life. One cannot be graduated from the junior college without, at some time or other, coming under the magnetic influence of her inexhaustable, vital energy, her vigorous, but unassuming efficiency, her heart-warming sincerity, and her charming sense of humor that never deserts her. We are proud to call such a woman the Dean of St. Helen's Hall junior college.



---

*Dedicated to*

---

★



---

*Gertrude Houk Fariss*

---

★

PHOTOGRAPH



## EDITORIAL NOTE

---

We, the editors of the *Scintilla* present to you a year-book, but a yearbook in name only. It is our deepest desire that this book will live with you through the years, just as we know the Hall will live forever in your hearts and minds.

We know that graduation will terminate school days for many. When you again thumb through these pages, you will see the Hall, for this *Scintilla* is the Hall. It represents fun we have had together—classes which were intimate and instructive, club meetings during which we talked about everything but the business at hand, chapel services with inspiring songs and messages, lake parties with potato salad and canoeing, dances with men of the moment, commencement with its lasting impressions, loyal friends and wonderful teachers who laughed with us and studied with us—it represents you. It *is* you.

---





---

# ADMINISTRATION

---



## OUR DEAN SPEAKS



GERTRUDE HOUK FARISS, Dean  
ELNA MARSTON, Registrar

To Our Graduates—

Go forward with courage, you of the Class of 1942. And with your courage let there be intelligent perspective. The highroads of today are not sheltered, peaceful ways, marked by guideposts of tradition. Rather they wind through torturous and dangerous passes, and countless crossroads lead into strange, precarious regions. But do not be afraid. Those with courage, steadfastness, and faith will find the way.

Upon the woman of today rest tremendous obligations to utilize her education for living, the priceless gift of a free country; to find a deep, spiritual conviction, emerging from America's earliest insistence upon the right to worship God in freedom; to prove worthy of her heritage of liberty and democracy, fought for and won with the toil and lifeblood of Americans. Out of the struggles and triumphs of this past comes the challenge of our present.



Go forward to meet the challenge, you who are leaving us. Do not be afraid!

—GERTRUDE HOUK FARISS.

# FACULTY

## CHARLOTTE ANDERSON

*Physical education instructor teaches all tennis classes — Miami university in Oxford, Ohio—adviser of H club and athletic association.*

## KATHERINE S. ARNOLD

*Teaches French—Mt. Holyoke and Columbia university — studied abroad at Oxford and University of Rennes in St. Servan, France.*

## DR. ALICE M. BAHR

*Head of Science department—teaches bacteriology, anatomy, physiology, and personal hygiene—University of California and University of Oregon — active in experimental nutrition research—hobby is photography.*

## CAROLYN GORDON BOWERS

*A "Hall" alumna—University of Washington and Columbia university — studied drama under Madame Maria Ouspenskaya — Phi Beta Kappa — teaches drama, literature, and poetry—in spare time, writes poetry and plays.*

## LEE MILLER BROWN

*Instructor in clothing and design—B. F. A. from University of Washington—extensive art study—besides her teaching duties, is a successful free lance designer.*

## ESTHER BURCH

*Another Oregonian—Reed college—teaches social sciences: comparative governments and history of western civilization —adviser for I. R. C.*

## JANET EASTERDAY

*Teaches all commercial subjects—University of Oregon—traveled widely abroad—proficient also as French and Latin instructor.*

## TOMME NELL JACKSON

*Mills college alumna — native Texan — teaches physical education: fencing, archery, badminton, and dancing—her passion is Mexico—another adviser of H club.*





**ELIZABETH P. MOUSER**

*Teaches professional nursing subjects — graduate of Montana State college—is a registered nurse.*

**CLARA CHAPMAN PIERSON**

*Teaches psychology and science for living—strictly Oregonian—received both B. S. and M. S. from Oregon State college—interested and active in music field.*

**MARIAN PETTIBONE**

*Chemistry major — Linfield college and University of Oregon—one of advisers for Curie.*

**HELEN L. RANDS**

*French and Spanish instructor —University of Oregon—traveled extensively in Mexico after serving as assistant Spanish instructor at her alma mater.*

**CLORINDA TOPPING**

*Director of Glee club—teaches music appreciation and speaking voice—extensive voice and music study — University of Oregon — soloist for Trinity church choir.*

**LILYANN VEATCH**

*Art instructor—University of Oregon and Chicago Art Institute—very active in Portland Art circles—most interested in oil painting.*

**QUENDREDA WILHELM**

*Teaches foods science to regular college students and chemistry and nutrition to nursing students — University of Colorado and University of Oregon—chemistry major.*

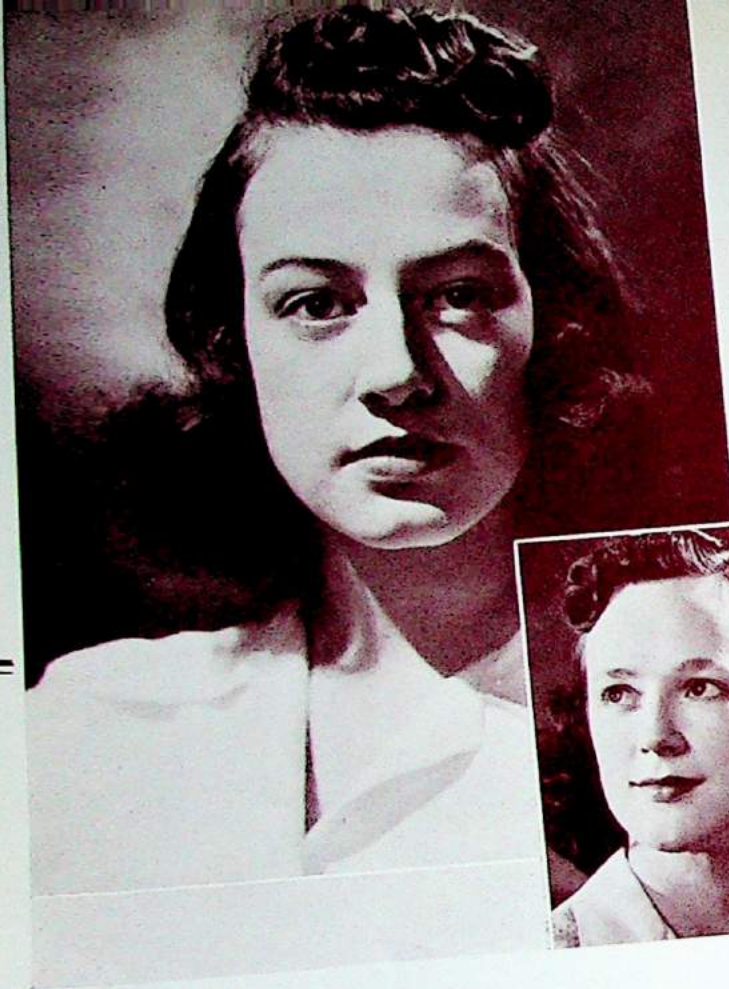
**JULIA WYATT**

*Manages college library — Simmons college and Reed college — an ardent ski enthusiast.*

**RITA YORK**

*Superintends pre-school — teaches college classes in child psychology and family relations — American university and Mills college.*





C. HOLLOWAY, President  
A. BRADSHAW, Vice-President

## STUDENT BODY

Telephone duty, Community Chest campaign, Red Cross drive, white elephant sale, Day of Devotion, Christmas seal campaign, rummage sale, defense stamp sale, formal and informal dances. "Onward, Ever Onward" . . . Does not that list of diverse all-school activities remind you of the bi-monthly Thursday student body meetings where the prexy pleads for cooperation and appoints endless committees; where club presidents announce every organization event; where the date committee solicits potentially dateless girls; where the year-book staff encourages the sale of the *Scintilla*; where the ad chief begs for more copy?

Meetings are not always so personal, however, for every other Thursday the student body assemblies are devoted either to speakers who discuss cultural or civic topics or to school organizations which present educational programs in keeping with their own activities. Among the outstanding guests this year were Sadie Orr Dunbar and Robert Tyler Davis. An athletic exhibition, a quiz program, motion pictures, panel discussions, and musical presentations have been presented by clubs at their annual assemblies.

"That our daughters may be as the polished stones of the temple. . . ." That ideal was expressed by the founders of St. Helen's Hall when they laid the first cornerstone more than eighty years ago, and that ideal has continued to live through eight decades of educational achievement.

St. Helen's Hall, the only accredited junior college exclusively for young women in the state of Oregon, traces its origin to an institution organized to meet the needs of the daughters of the pioneers. The school was founded by the Episcopal church in 1861, and in 1932 the junior college was established to supplement the elementary and high schools.

Since the institution has always had a tendency to enrich its curriculum progressively, the junior college in 1937 augmented its educational opportunities by affiliating with the School of Nursing of the Good Samaritan hospital.

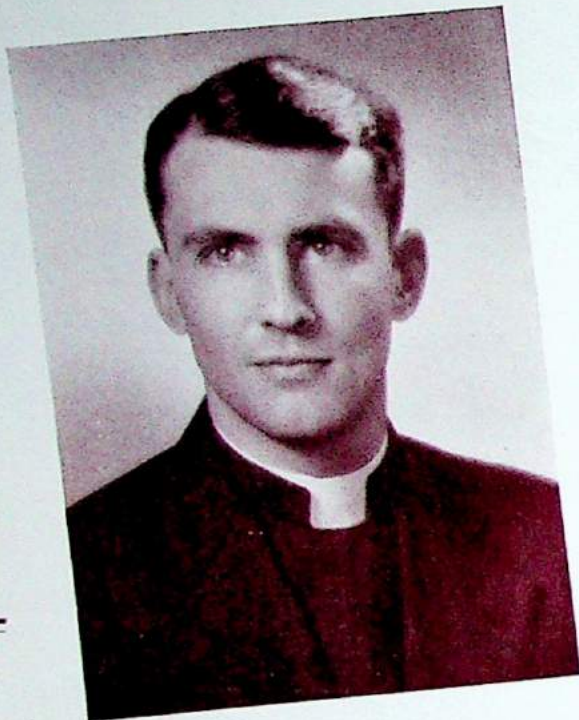
To proceed "Onward, ever onward" is truly the aim of St. Helen's Hall junior college in its educational program and fulfillment of its ideals.

## OFFICERS

---



*D. Balzimer, treasurer; I. Feinstein, secretary; J. Gray and Y. Prather, sophomore representatives; E. Leibold, sergeant-at-arms; H. Kowitt, editor of "Hall Tree"; G. Powell and L. Vaughan, freshman representatives.*



The Reverend  
**ARTHUR A.**  
**VALL-SPINOSA**

---

In future years, should this be read then, our world will not be falling about our heads like an autumn leaf; it may have fallen, or it may be like the oak leaf which falls only with the advent of the new. It will be a different world, certainly, but only because you are different and we could only ask it so. Springlike, at all events, it will be a happier place.

The ever present worry of the past for the future is always the harvest, the fall, the autumn. It can be different from ours only if the plant grows differently; if it is perhaps stronger, more healthy, infused with a new strain.

To each of us Christianity does offer a new life. As we are grafted into new beings, the person and spirit of Christ, our fall never comes; spring is always present with us; and the harvest time, when we must face it, one by one, is even lovelier than the seedtime.

So my prayer for you is that you are truly caught *anno domini*, in a year of the Master, finding your autumn a very springlike season, happier, more joyful even than the present.

ARTHUR A. VALL-SPINOSA.



---

**CLASSES**

---



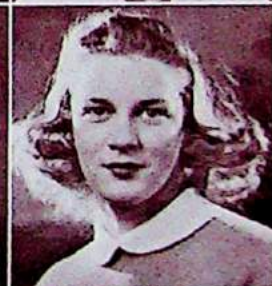
## SOPHOMORE CLASS LEADERS

The 1942 graduates have been active to the nth degree in every junior college activity from scholastic achievement and superiority in science to invigorating athletic participation and wholesome social life.

By ambitiously selling doughnuts and sponsoring a fortune-telling concession at the annual May Carnival, the girls worked together to assist the yearbook financially and to present a class gift to the school.

Among the events so memorable to every graduate, Baccalaureate service is one of the most impressive. This year's sermon was delivered by the Right Reverend Benjamin D. Dagwell at Trinity church on May 24.

Preceding the spring dance, May 29, sophomores gathered for a formal dinner at the University club. This all-feminine celebration marked the last class gathering before commencement exercises at Trinity church, Saturday evening, May 30.



*M. Povey, president; B. Hudson, vice-president; K. Tanida, secretary-treasurer; M. Black, sergeant-at-arms; S. Casebeer and H. Kowitt, editor of "Scintilla."*



## CLASS OF 1942

### *DOLORES ASHKAR*

*Dolly, with her New "Yark" accent, was the typical club member. She belonged to Delta Psi, Curie, Understudy, and Studio and has been the secretary of I. R. C.*

### *AILEEN DELOROS BRADSHAW*

*Aileen had "fun" keeping honor points as vice-president of the student body. Besides her activities in Angelas, Delta Psi, and Understudy, she was on the Scintilla advertising staff.*

### *DORIS ALICE BALZIMER*

*Dory, our treasurer, was one of the busiest girls of the student body. Member of Angelas Delta Psi, and Curie, she was also the able president of Glee club.*

### *MARGERY ANN CARTWRIGHT*

*Cooperative, energetic Marge solicited Scintilla ads and typed all yearbook copy. Offering many helpful suggestions, she was on the sophomore finance committee, besides belonging to Understudy and Studio.*

### *MARGARET JACQUELINE BLACK*

*Margaret, the school's lively artist, was also the "stern" sergeant-at-arms of the sophomore class. She belonged to Curie, Understudy, Studio, and I. R. C.*

### *SHIRLEY RAE CASEBEER*

*Shirley, our journalistic girl, was assistant editor of the Hall Tree, co-editor of the Scintilla, and Press club president. She belonged to Curie and was Angelas girl-of-the-month for November.*





## CLASS OF 1942

### MARY ANNA ECKMAN

*Mary Anna, photo enthusiast, was Scintilla candid snap editor and president of Camera club. Glee club, Studio, and I. R. C. demanded the time during which she was not busy feeding rats!*

### NANCY ANN HALLOCK

*Diminutive Nancy, a ludding cook, has given much time to Delta Psi and to Understudy, of which she was president. She was Curie's secretary and assistant business manager of the Scintilla.*

### MARY ELLEN FOLAND

*MEF, energetic and capable president of Delta Psi, was chairman of the Defense Stamp sale. She belonged to Angelas and Press club and was Freshman representative.*

### BETTY LOUISE HARDER

*Betty, the laughing girl, directed I. R. C. as president and was on the Scintilla advertising staff. She belonged to Curie and Studio and last year was a member of Forum.*

### JEANNA CATHERINE GRAY

*Having belonged to every club in school, Jeanna appropriately was sophomore representative in charge of clubs. Skillfully, she wrote Scintilla activities copy and was stage manager of the April play.*

### MARY CAROLINE HOLLOWAY

*Our genial Caroline was the refreshing and popular student body president. Her acting ability was well-known, and her activities carried over into Angelas, Delta Psi, and Glee club.*





## CLASS OF 1942

### BEVERLY HUDSON

*Slender Bev was the resourceful sophomore class vice-president. She was Huycke's constant companion and was a regular club-woman, belonging to the science honorary, Studio, Glee, and I. R. C.*

### MARY WANZER LONG

*Although a February bride, Mary successfully served as Scintilla advertising manager. Handy with finances, she kept I. R. C.'s treasury afloat, and in the fall of '41 she supervised the freshman party.*

### DOROTHY L. JOHNSON

*Dot, a Hall Tree "official" typist, was Studio club's vice-president and active member in the Glee club and I. R. C. She was a charter member of the H club.*

### CATHERINE ANN MORROW

*Catherine, the Shakespeare "fiend", was sports editor for the Scintilla. She was a very gracious hostess at a monthly buffet supper for the Press club, to which she belonged.*

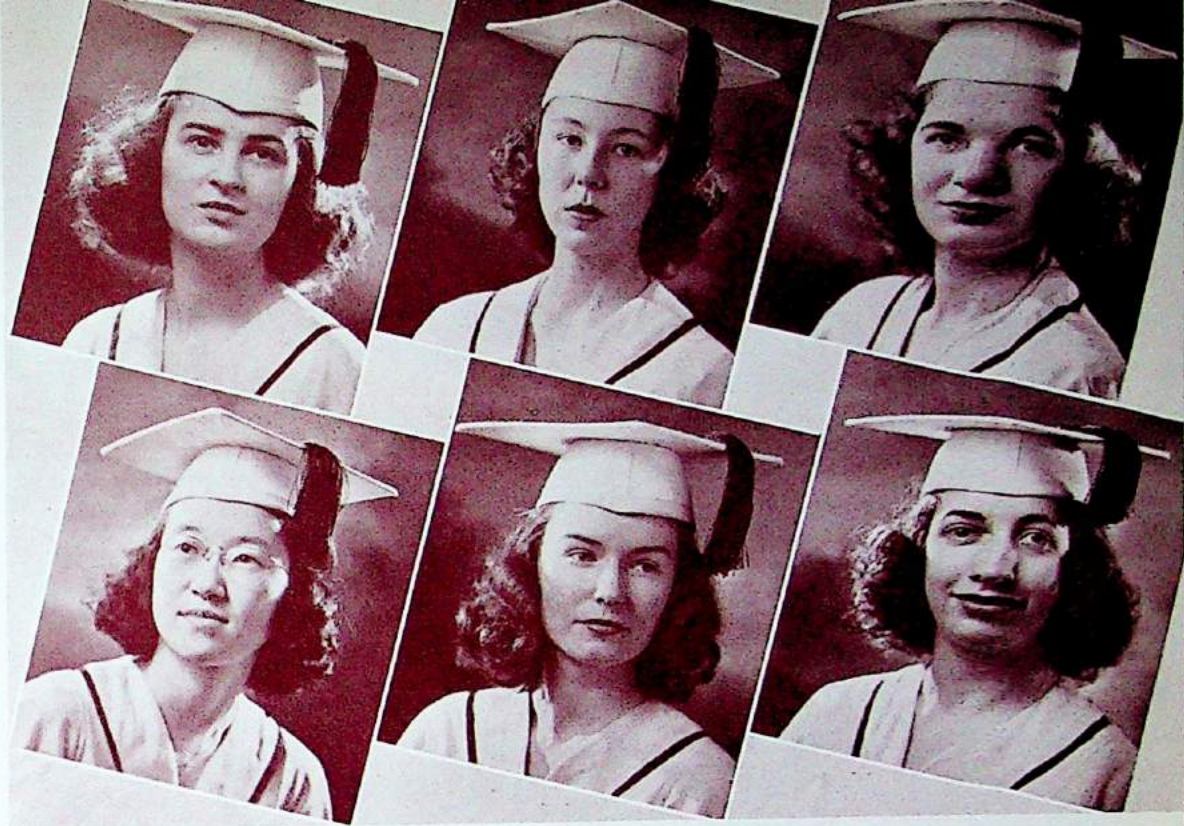
### HARRIET DORIS KOWITT

*Journalistically inclined Harriet edited the Hall Tree and was co-editor of the yearbook. Besides being secretary-treasurer of Delta Psi, she was a member of Angelas, Curie, and Press club.*

### YVONNA JUNE PRATHER

*Y. V., who announced her engagement recently, was Scintilla literary editor. Member of Angelas, she was Delta Psi's vice-president, sophomore representative, and recipient of the Nelson Shield Award.*





## CLASS OF 1942

### JUNE PAGE

*Sweet June bore up well under the burden of being mistaken for Ruthie. She was the capable Curie president and a member of Delta Psi, Understudy, and Studio.*

### KIMIKO TANIDA

*Kimi was a whiz at finances after being secretary-treasurer of the sophomore class. She faithfully and patiently arranged Scintilla photo sittings and belonged to Curie and I. R. C.*

### MYRNO LOUISE POVEY

*Lively Myrt proved to be an enterprising prey, not only of the sophomore class but also of I. R. C., fall term. Angela chose her as October girl-of-the-month.*

### PAT APRIL WATERHOUSE

*Pat April, the school dance "committee", was I. R. C's irrepresible vice-president. She collaborated well with other members of Studio and last year belonged to the Glee club.*

### BETTY STERNBERG HUYCKE

*With executive skill, Sternberg wielded Studio's gavel this past year. She made Scintilla photography arrangements and, before her surprise marriage, participated in Curie and I.R.C. affairs.*

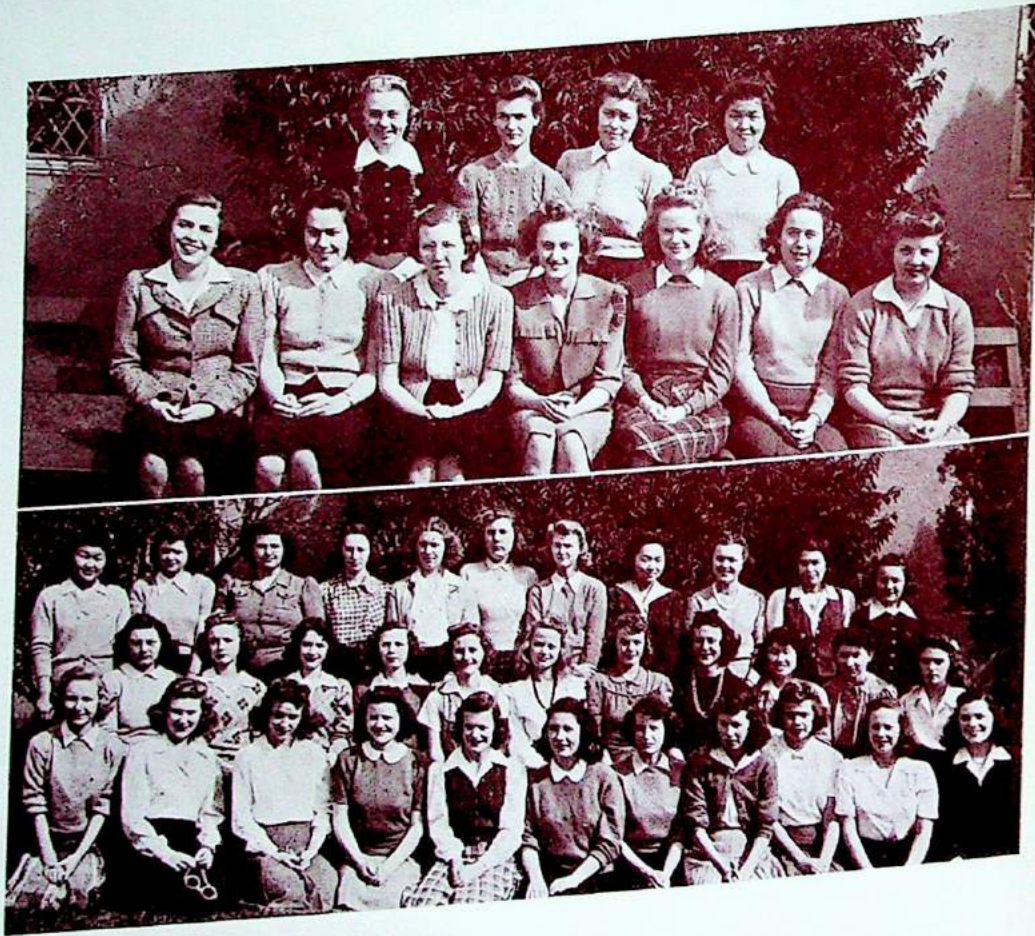
### ROSANNE WEIL

*Stately Rosanne, president of H club and the Athletic Association, was active in Angelas and Delta Psi. She managed the business end of the Scintilla and was vice-president of Curie.*



# NURSES

*D. Berke, R. Calvin, J. Gray, L. McCoy, F. Hall, A. Hanford,  
M. Renrick,  
D. Thompson, A. Buddee, E. Milbrandt, M. Shoji.*



*E. Dodson, L. Cheney, H. Harder, M. Trouton, G. Powell, S. Smith, E. Leibold, J. Leitritz, B. Luplow, P. Bone, I. Feinstein,  
A. Arnsbarger, B. Oliver, D. Shulson, P. Duffy, D. Thomas, M. Bendixen, L. Jerman, M. Michaels, M. Oyama, R. Perkins, S. Hall,  
M. Yoshitomi, D. Thompson, J. Sternberg, M. Beach, B. Crawford, W. Coward, B. Deutsch, S. Ikeda, L. Vaughan, B. Ross, R. Thurm.*



## CLASS OF '43



# ACTIVITIES





*S. Casebeer, H. Kowitt,  
Editors.  
H. Kowitt, S. Casebeer, L. L.  
Cheney,  
M. W. Long, Y. Prather, J.  
Gray, Mrs. Fariss.  
B. S. Huycke, R. Weil.*

The editorial staff of the *Scintilla* included co-editors, Shirley Casebeer and Harriet Kowitt; activities editor, Jeanna Gray; literary editor, Yvonna Prather; sports editor, Catherine Morrow; photography editor, Betty Sternberg Huycke; and art editor, Lila Lee Cheney. Kimi Tanida and Mary Anna Eckman served as assistant photography editor and candid photo editor, respectively. Mrs. Gertrude Houk Fariss cooperated with the co-editors and supervised the production.

Business Manager Rosanne Weil and her assistant, Nancy Hallock, controlled and recorded the yearbook finances. Margery Cartwright and Dorothy Johnson typed all yearbook copy.

Under the guidance of the advertising manager, Mary Wanzer Long, ambitious advertising solicitor chairman who did so much toward making this year book possible, were Anne Seeberger, Verna Smith, Pat Waterhouse, Margery Cartwright, June Page, Beverly Hudson, Aileen Bradshaw, Doris Mae Hansen, Mary Ellen Foland, Myrno Povey, and Pat Bone. Each chairman was assisted by a group of freshmen.

The co-editors, business manager, and advertising manager, who were elected from the graduating class during the sophomore election, chose their own assistants from among sophomore and freshmen students.



# ANGELAS

Members of Angelas strive to represent the fine qualities of womanhood of Sister Katherine Angela, after whom the sophomore service honorary was named. The blue Maltese Cross, emblem of the organization, symbolizes service, outstanding among the many virtues reflected throughout the beloved Sister's life.

Angelas is unique in that it has no officers. Members of the honorary served the junior college in numerous ways. They planned and directed activities of Freshman Week, which was inaugurated to assist new students in adjusting themselves more easily and happily to college life. The ideal of service was especially evident during the Thanksgiving and Christmas holidays, when Angelas members presented food and gifts to needy families.

Because of the many students who remain unrecognized for their activities, quiet loyalty to the Hall, and sincere friendliness toward everyone, Angelas introduced the girl-of-the-month award last year. Myrno Povey, Shirley Casebeer, Betty Deutsch, Dorothea Thomas, and Mary Anna Eckman were presented with awards this year.

The tapping of new members took place during the Torchlight Procession and was followed by the impressive initiation in the college chapel in May.

# DELTA PSI OMEGA

The Sara Siddons chapter of Delta Psi Omega, national honorary fraternity in dramatic art, has introduced several "firsts" in pledging this year. Four sopohomores, June Page, Jeanna Gray, Doris Balzimer, and Rosanne Weil, were pledged fall term and were formally initiated in March to enable them to participate in activities as members before graduation. In March Roberta Perkins was pledged, to be initiated in May, with the three other freshmen pledges, Eleanor Dodson, Grace Powell, and Dorothea Thomas.

Delta Psi's activities during the year have been varied. Two annual projects were carried out by members under the direction of Miss Carolyn Gordon Bowers, adviser; Mary Ellen Foland, president; Yvonna Prather, vice-president; and Harriet Kowitt, secretary-treasurer. An evening of melodrama was presented for the entertainment of new students during Freshman Week, and a burlesque of college life was given as the fifth annual Stunt Nite program. A panel was presented for the student body jointly with Understudy in February.

The traditional Awards Tea was given in May, at which awards were presented to students who had been outstanding in dramatic work. New members were pledged, and formal initiation ceremonies were held in May.



*M. E. Foland, R. Weil, D. Balzimer, H. Kowitt, Mrs. Furiss, A. Bradshaw, J. Gray, C. Holloway, Y. Prather.*



ANGELAS



DELTA PSI OMEGA



*M. E. Foland, President.  
N. Hallock, M. E. Foland, J. Gray, H. Kowitt, A. Bradshaw, R. Weil.  
Y. Prather, C. Holloway, Miss Bowers, D. Ashkar, J. Page, D. Balzimer.*



## CURIE

The thirty members of Curie, science honorary, have been busy this year in diverse activities. They traveled to the beach twice, first in October to Seaside, and later in May, to Nelscott, for the purpose of seeing the marine gardens at exceptionally low tides. Members also inspected the Good Samaritan hospital in December.

For its annual assembly, Curie showed three groups of films, one depicting colorful scenes of the Hawaiian Islands, one demonstrating the formation of snow crystals, and the other showing points of interest along the New Oregon Trail.

At the Willamette Valley Science conference at Oregon State college in April, Betty Deutsch, Rosanne Weil, and Kimi Tanida presented papers.

Another spring activity was the visit to the Charlton laboratories, after which the members hiked in the west hills region.

Curie is unique in having four advisers, Dr. Bahrs, Miss Pettibone, Mrs. Pierson, and Miss Wilhelm. June Page was president of the honorary, the membership of which is composed of both junior college students and preliminary nurses; Rosanne Weil was vice-president; and Nancy Hallock, secretary-treasurer.

## UNDERSTUDY CLUB

Understudy is sponsored by Delta Psi Omega to further dramatic interest among students. The club has been particularly helpful to the dramatic honorary by its assistance with play productions. Understudy members have served as stage crew and ushers at all school dramatic functions.

At the combined business and social meetings held at members' homes each month, scenes from well-known plays and reviews of the authors' lives were presented.

Under the chairman, Betty Deutsch, the club held a successful candy sale before the Christmas holidays. Other activities of the year were a joint Understudy-Studio dance and a joint Understudy-Delta Psi Omega assembly, at which a panel discussed motion pictures as a means of war escapism. In the spring the club entertained members of Delta Psi Omega at a progressive dinner.

During fall term, Pat Bone acted as president; Dorothea Thomas, vice-president; and Irene Feinstein, secretary-treasurer. Spring semester officers included Margaret Trouton, president; Betty Deutsch, vice-president; and Grace Powell, secretary-treasurer.



*J. Page, President.*

*E. Dodson, H. Kowitz, B. Deutsch, B. Hudson, D. Ashkar, M. Black,  
K. Tanida, R. Perkins, S. Casebeer.*

*M. Trouton, E. Leibold, L. Vaughan, D. Balzimer, Dr. Bahrs, Mrs.  
Pierson, J. Page, N. Hallock, R. Weil, J. Sternberg.*

*B. Harder, I. Feinstein, Jeanna Gray, F. Hall, Jean Gray, R.  
Calvin, A. Hanford, S. Ikeda, M. Beach, M. Yoshitomi, A.  
Arnsbarger.*



CURIE



UNDERSTUDY CLUB



*M. Trouton, President.*

*E. Dodson, D. Thomas, R. Thurm, I. Feinstein, G. Powell, M.  
Trouton, Miss Bowers, S. Smith, E. Leibold, B. Lupton.*

*P. Bone, L. McCoy, J. Gray, B. Deutsch, R. Weil, J. Page.*



# INTERNATIONAL RELATIONS CLUB

The goal of International Relations club is to promote a better understanding of international relations among students. It is sponsored by the Carnegie endowment for International Peace, which sends information on world affairs and problems to the club monthly.

During meetings of the year, members reported on current books which analyzed international subjects and on those revealing customs and discussing governments of various countries. Discussions by members followed.

Activities of the club included monthly dinners, at which were served the special foods of foreign countries. The club also sponsored many members of the student body who wished to attend army dances.

A quiz program was presented as the club's assembly. Organization presidents made up a board of experts who attempted to answer questions on current international affairs.

Officers for fall term were Myrno Povey, president; Pat Waterhouse, vice-president; Dolores Ashkar, secretary; and Mary Wanzer Long, treasurer. Betty Harder, president; Verna Smith, vice-president; Pat Duffy, secretary; Janet Sternberg, treasurer; and Sue Smith, sergeant-at-arms held offices during spring term.

## STUDIO CLUB

Studio is the energetic club which does most of the art work for junior college activities. The organization's chief purpose is to foster an appreciation of art by having its members make posters and bids for dances and do the work for dramatic productions.

During the year, Studio members have made bids for school dances and for many of those sponsored by clubs, as well as the Mortar Board bids for Delta Psi Omega Stunt Nite. The girls designed clever and artistic decorations for the May Carnival, the Christmas and spring formals, and the fall and spring informals.

One of the most appreciated projects of the club was the making of colorful scrapbooks for the children at Doernbecher hospital. The girls personally delivered their books.

Monthly social meetings, including several pot-luck dinners, were held at members' homes. Officers for the year were Betty Sternberg Huycke, president; Dorothy Johnson, vice-president; and Alice Arnsbarger, secretary-treasurer. Miss Lillian Veatch acted as adviser.



*B. Harder, President.*

*M. Trouton, B. Luplow, G. Poicell, S. Smith, P. Duffy, V. Smith,  
M. E. Foland*

*M. A. Eckman, S. Hall, A. Seeberger, A. Arnsbarger, B. Harder,  
Miss Burch, M. Povey, P. Waterhouse, D. Ashkar, B. Hudson,  
N. Hallock.*

*L. Vaughan, J. Sternberg, R. Weil, M. Black, K. Tanida.*



International Relations Club



STUDIO CLUB



*B. Huycke, President.*

*A. Seeberger, A. Arnsbarger, L. Jerman, S. Hall, P. Duffy, Miss  
Yeatche, P. Waterhouse, D. Ashkar, M. Povey, B. Hudson.*

*M. Yoshitomi, M. Black, V. Smith, D. Johnson, M. Beach, J. Stern-  
berg, M. Eckman.*



## PRESS CLUB

Among outstanding achievements of Press club, the journalism organization, under the leadership of Shirley Casebeer, president, were bi-monthly contributions to *The Hall Tree*, the college paper edited by Harriet Kowitt.

Jean Leitritz, vice-president, and Eleanor Dodson, secretary-treasurer, were largely responsible for introducing prominent journalists as guest speakers at the monthly buffet suppers held at members' homes. Bonnie Wiley, only girl reporter in Portland, and Vivien Bretherton, creator of *Andy Hardy*, were two of the entertaining guests.

Annually, Press club sponsors Cotton Day. Lucille Vaughan "chairmaned" this year's event on May 1, when each student appeared in a cotton dress. After the dresses were judged, awards were presented to Elia Leibold for the most original self-made frock and to Dorothea Thomas for the prize ready-made dress.

"The Press Panelrama," a panel discussion of how foreign news gets from its source to the daily newspaper, was presented by Dorothea Thomas, Jeanna Gray, Eleanor Dodson, Elia Leibold, and Shirley Casebeer at a November student body assembly.

## GLEE CLUB

The Glee club, under the direction of Mrs. Clorinda Topping, had a very active and successful year. A tea, which introduced prospective members to the Glee club, was held during Freshman Week at the home of Betty Sternberg Huycke.

For its first performance of the term, the songsters entertained a group at the Christmas party at Trinity Episcopal church. The novelty program was repeated for the junior college student body at their Christmas assembly.

In March, a program of semi-classical numbers was presented for enlisted men at the Portland army air base; and a second performance, of popular songs, was given at the air base in April.

A spring program in May in the form of a tea was given by the group which, throughout the year, was composed of sixteen singers.

Doris Balzimer acted as both president and accompanist during the year, and Betty Deutsch was treasurer and librarian.

The founding of a music library exclusively for junior college students was the major achievement of the music society. Throughout the year, classical, semi-classical, and modern chorus arrangements were added to the collection.



*S. Casebeer, President.*  
*E. Dodson, S. Hall, G. Powell, P. Duffy, D. Shulson, L. L. Cheney,*  
*H. Harder.*  
*A. Seeberger, M. E. Foland, R. Thurm, I. Feinstein, J. Leitritz,*  
*S. Casebeer, Mrs. Fariss, M. Trouton, S. Smith, E. Leibold,*  
*R. Weil.*  
*P. Bone, L. Vaughan, L. McCoy, D. Thomas, J. Gray, H. Kowitz,*  
*M. Oyama, R. Perkins.*



PRESS



GLEE CLUB

*D. Balzimer, President.*  
*I. Feinstein, L. Vaughan, V. Smith, Y. Prather, M. E. Foland,*  
*C. Holloway.*  
*B. Deutsch, J. Gray, E. Leibold, M. Eckman, Mrs. Topping, D.*  
*Balzimer, N. Hallock, D. Thomas, E. Dodson, D. Johnson.*





## H CLUB

*R. Weil, President.*

*P. Bone, G. Powell, M. Bendixen, Mrs. Anderson, R. Weil, Miss Jackson, S. Hall, R. Perkins.*

*P. Duffy, D. Johnson, B. Crawford, B. Deutsch, B. Luplow, D. Thomas, K. Tanida.*

A new club was formed this year. The H club was organized within the Athletic association to further extracurricular participation in sports. Thirteen charter members, Martha Bendixen, Bette Luplow, Betty Deutsch, Pat Bone, Pat Duffy, Roberta Perkins, Kimi Tanida, Dorothea Thomas, Dorothy Johnson, Shireen Hall, Grace Powell, Barbara Crawford, and Rosanne Weil, were initiated into the club in March. Each girl in order to qualify for membership had to complete ten hours of active participation in sports to earn one hundred points. Tennis, badminton, swimming, tumbling, and horseback riding were the acceptable sports.

The H club assembly consisted of a demonstration by students of the classes taught in the physical education department of the junior college and a comedy-tumbling exhibition by the instructors and advisers, Miss Tommie Nell Jackson and Mrs. Charlotte Anderson.

The May Carnival, held May 6, was under the direction of the H club, although each student organization in the junior college prepared and managed a concession. The election of the May queen and court and the coronation ceremony and entertainment were two of the major responsibilities of the members. Dorothy Johnson was chairman of the nominating committee, with Myrno Povey, Verna Smith, and Elia Leibold assisting her.



# MAY FETE COURT



*Princesses Betty, Doris, Pat, and Aileen  
Queen Dolores*

Gracious Queen Dolores I; lovely Princesses Aileen, Betty, Doris, and Pat; and the comical jesters have won an unforgettable place in the hearts of loyal student and faculty subjects at the 1942 May fete.

In 1935 the Athletic Association originated the May Carnival at St. Helen's Hall junior college. There were booths and concessions sponsored by various school organizations, and a royal court elected from the sophomore class, to reign over the festivities. The laugh-provoking jesters were selected from freshmen ranks. Each year the May fete has proved more popular, and this spring festivities reached a climax.

Incorporating campus day and the party for high school girls with the carnival was a novel, welcome idea, since classes were dismissed. Students donned shorts to beautify the campus in the morning; then after pausing for lunch, they worked with renewed vigor to decorate club booths in the gymnasium.

Prospective students arrived for a picnic supper preceding the coronation ceremonies and entertainment. When carnival activities ceased, tired, happy girls, still chatting about the royal entourage, were ready to retire after a successful May 6.



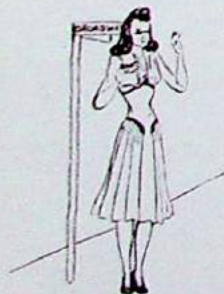
# FOOTLIGHTS.....

Lights! Curtain! Action! And another season of dramatic entertainment opened with the college players of St. Helen's Hall junior college presenting a rollicking melodrama, *She was Only a Farmer's Daughter*. To the munching of peanuts and the sipping of cider, served for proper dramatic effect in beer mugs, by the new, wide-eyed freshmen, dastardly Mulberry Foxhall, impersonated by the long-legged Caroline Holloway, caressed "his" mustache and pursued the virtuous Buttercup Spivens, played by flirtatious Yvonna Prather, across the stage, while the noble hero, Archibald Achilles Smithers, better known as Aileen Bradshaw, strode to the rescue.

In October, Delta Psi Omega Stunt Nite, entitled *College Daze*, brought such an enthusiastic response from its original audience that it was twice repeated. In the course of *College Daze*, a burlesque of university life and modern education, a timid freshman, played by Harriet Kowitt, wandered into a "typical" college, where she was lulled to sleep by an Academic Guide, pedantly portrayed by Aileen Bradshaw. A hilarious and awful nightmare of the various phases of college life followed, with cap-and-gowned professors, Mary Ellen Foland, Yvonna Prather, and Caroline Holloway, loudly acclaiming the wonders of their courses. Delta Psi Omega alumnae entered into the spirit of the production by portraying the alumnae group of the mythical college.

In direct and vivid contrast to these wild comedy moods was the timeless element and spiritual appeal of *The Women of Bethlehem*, an inspiring and impressive Christmas play. Robed in vari-colored garments and soft, flowing veils, the actresses attempted to recreate with simplicity and dignity the age-old story of the birth of Christ. Notable in the performance was the lullabye sung by unseen angel voices over the creche of the infant Jesus.

The first major production of the year, the fifth annual experimental night, was a dramatic adaptation of the letters of Elizabeth Barrett to Robert Browning. The play, entitled *Elizabeth*, was given, in accordance with the experimental nature of the evening, in an impressionistic manner on a two-level stage, with but a suggested set. The curtains were never drawn during the performance, the continuity being carried by Caroline Holloway, who, as Elizabeth Barrett, connected the various scenes by her sensitive and moving rendition of Elizabeth's letters. Yvonna Prather, as bombastic Henrietta, and Aileen Bradshaw, as dignified Arabel, Elizabeth's two sisters, gave effectively dramatic performances in this tale of the great invalid poetess. Humor was achieved by Nancy Hallock, in the role of the lisping Bella, Elizabeth's cousin, and by Harriet Kowitt, in the role of Elizabeth's Cockney maid, Wilson. Brief scenes from various full-length plays completed the program.





### NO TIME FOR COMEDY

With the presentation in Scadding hall, April 30, of S. N. Behrman's contemporary drama of illumination, *No Time For Comedy*, revised by Carolyn Gordon Bowers, the dramatic season was brought to a successful close.

*No Time For Comedy* concerns the lives of three denizens of a world of sophistication, wit, and chaos. Yvonna Prather gave an excellent portrayal of Linda Esterbrook, famous actress who attempts to retrieve her husband, Gay, a successful playwright of comedy, from the clutches of an utterly feminine but insidious woman, Amanda Smith, who has convinced Gay that he is wasting himself by writing comedy. As a result, Gay, under the influence of Amanda, who loves to develop his latent possibilities, almost ruins himself and his career by writing a tragedy on immortality.

Mary Ellen Foland as Amanda was convincing as the aesthetic seductress. Dan Wessler as Gay and Dunny Smith as Philo Smith, Amanda's intellectual husband, who falls in love with Linda, were effective additions to the play.

The original cast of *No Time For Comedy* included only three women. To adapt Behrman's play to include seven women, Miss Bowers added five characters. Dolores Ashkar as Joy Esterbrook, Gay's younger stage-minded sister; Caroline Holloway playing Phyllis Smith, an indifferent feminine replica of her father, Philo; Aileen Bradshaw in the role of Christine, loyal social secretary to Linda; Nancy Hallock as the bombastic producer and director, Margalo Thurman; Harriet Kowitt portraying Meredith Lovell, the English social and political columnist; and Jeanna Gray and Eleanor Dodson as maids completed the cast.

Technical staff for the spring play included Jeanna Gray, stage manager; Elia Leibold and Grace Powell, costume mistresses; Eleanor Dodson, property manager; Margaret Black, staff artist; June Page, business manager representing Delta Psi Omega and Understudy; Verna Smith, business manager representing the sophomore class; and Margaret Trouton, head usher.





## S P O R T S

"Service! Love-fifteen." This has been one of the most frequently heard cries this year at St. Helen's Hall junior college. Why? Because most of the students are tennis enthusiasts. The girls, too many to mention all their names, have become highly proficient at the game. Every sunny day brings good-natured vying for use of the tennis courts, the losers going to the side-lines to form a critical gallery while waiting for their turns. The "ping" of a tennis racket when a ball hits it and the cry, "Duece point," will be long remembered by all the students.

Many girls preferred fencing, the sport known for many centuries. "On guard", "Thrust", "Parry" were often heard commands. At the athletic association assembly the fencing class gave an exhibition.

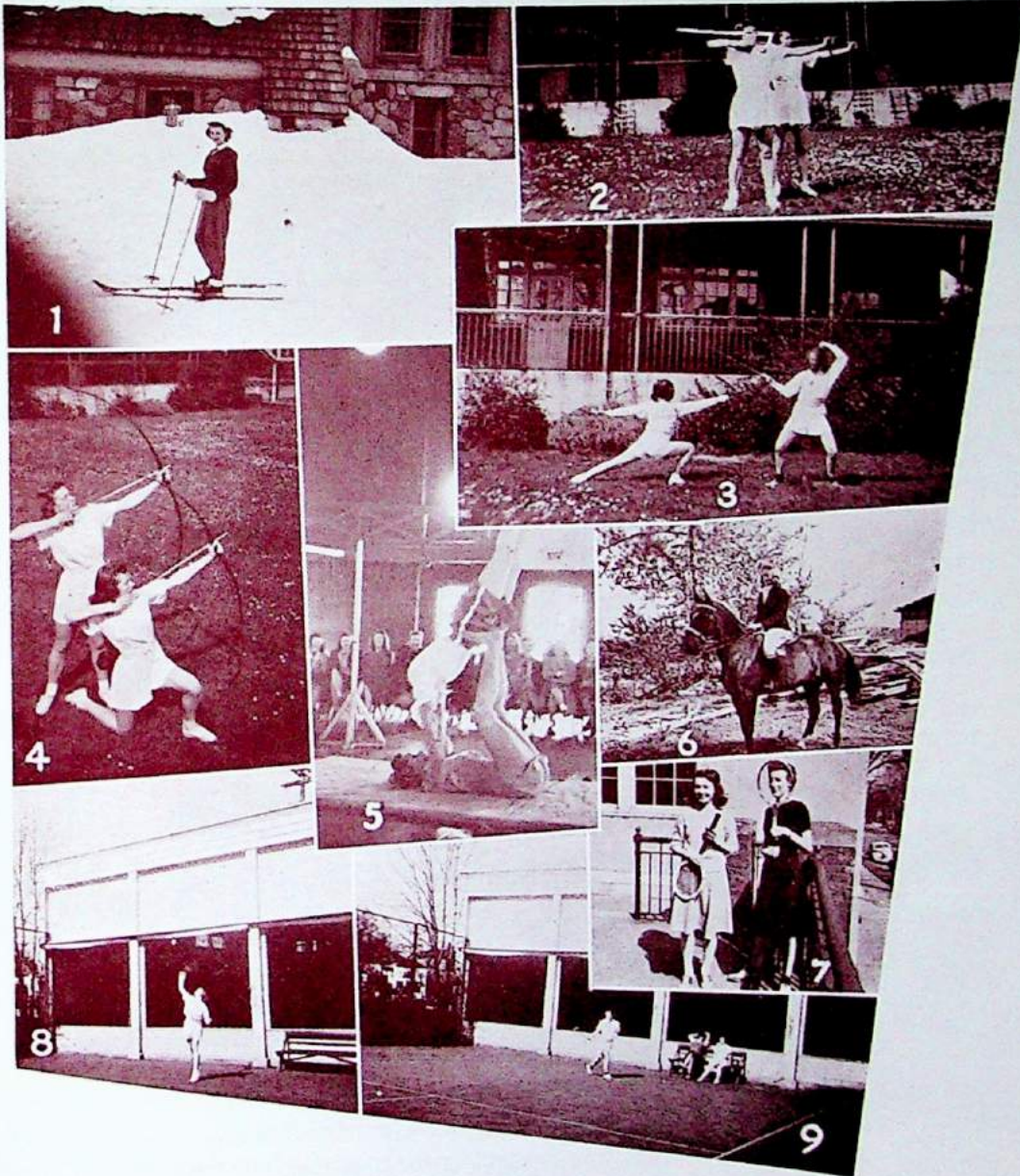
Following in the steps of Robin Hood, others of the students turned to archery, finding keen enjoyment in scoring bulls' eyes.

The gracefulness and poise of the leaps and the other figures of interpretative dancing attracted still others.

For some, nothing could equal the feel of a clean cut dive or of the strong pull of the crawl.

Badminton, too, was very popular. A quick flick of the wrist often turned the tide of victory. Pat Duffy, freshman, won the championship game of the badminton tournament from Myrno Povey, sophomore, at the time of the Athletic Association assembly. Since the players were so well-matched, the spectators closely watched each stroke of the game.

By all the girls at St. Helen's Hall junior college, sports and the values derived from them have been placed high among the activities which lead to healthy, happy, useful lives.



1. D. Johnson.
2. Hedy and Gracie.
3. Mef and A. Bradshaw.
4. G. Pozell and H. Harder.
5. Mrs. Anderson and Miss Jackson entertain students at A. A. assembly.
6. C. Morrow.
7. P. Waterhouse and B. Hudson.
8. V. Smith.
9. G. Pozell.

# JUNIOR COLLEGE AWARDS

## DELTA PSI OMEGA AWARDS

Delta Psi Omega drama honorary award for outstanding service throughout the year "behind-the-scenes," for efficiency, dependability, and cooperation, is presented to the freshman whom Delta Psi Omega members consider as having contributed most to the dramatic life of the school, Dorothea Thomas.

DIRECTOR'S AWARD . . . to a member of the Understudy club who has contributed most in a specialized field to the dramatic activity of the college. This year the award is presented to Eleanor Dodson.

DIRECTOR'S AWARD . . . to a member of Delta Psi Omega who has most selflessly and consistently participated in all dramatic productions throughout the years of college work, tirelessly working on small details as well as on larger projects, holding only one goal in mind, that of advancing college dramatics. This award goes to Mary Ellen Foland.



## FRESHMAN AWARDS

Each year the Nelson Shield is presented to the freshman who has contributed the most to the activities of the school. This year the custodianship of the school shield goes to Lucille Vaughan.

A representative girl is chosen from every freshman class. The choice is a girl whose character, ideals, and activities are most truly representative of St. Helen's Hall junior college. The honor this year goes to Grace Powell.

## ATHLETIC ASSOCIATION AWARDS

FRESHMAN CUP . . . awarded to the girl who is outstanding in athletics and who has contributed most to the Athletic Association. The award is presented to Betty Deutsch.

SOPHOMORE TROPHY . . . awarded to the student who has shown loyalty, achievement, and outstanding sportsmanship in athletic events. Recipient of this honor is Rosanne Weil.

## SCHOLARSHIPS

Freshmen who received one-year scholarships were Shireen Hall, from Lincoln high school; Eleanor Dodson, Jefferson high school; Betty Deutsch, Grant high school; and Elia Leibold, Milwaukie Union high school.

To the outstanding freshman with the highest scholastic record is presented the sophomore scholarship. Last year the award was divided among Jeanna Gray, Harriet Kowitt, and Yvonna Prather.



## HONOR ROLL

Fall Semester 1941

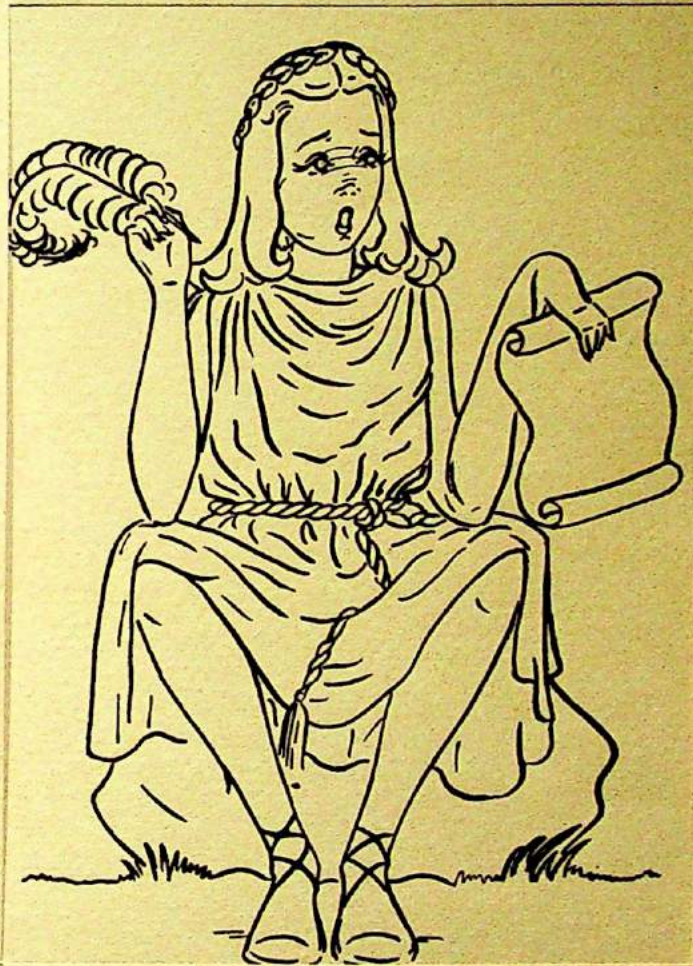
Betty Deutsch . . . . .	2.79	Harriet Kowitt . . . . .	2.59
Yvonna Prather . . . . .	2.64	Shirley Casebeer . . . . .	2.56
Elia Leibold . . . . .	2.5		



1. The boomers relax after lunch.
2. "Which club is to be photographed next?"
3. Mrs. Anderson.
4. The art class goes to the museum.
5. Just catching up on Red Cross homework.
6. Pat Bone is studying.
7. Sue and Margaret peering over the railing.
8. Bev. Pat, and Harriet after badminton.
9. Dorothy and Margery.
10. Remember commencement practice?
11. Dorohtea all alone.
12. Barbara and Frances take advantage of the quiet rec. room.



1. Miss Wilhelm in the popular foods lab.
2. Yes, Casebeer works sometimes.
3. Jeanna and Shirley plus Spring Fever.
4. Catharine Morrow.
5. Mef takes on a little nourishment.
6. Look at the artistic gals!
7. Gracie gets the once over from Hedy, Betty, and Sue.
8. D. Mae Hansen.
9. Miss Bowcers carrying for Holloway's glasses.
10. The co-editors amid the daisies.
11. Kimi, Betty, and Cathy pose.
12. Yv and Louis are engaged.
13. Ah-ah, climbing out windows.
14. One day about 11:20.
15. Mryt, Pat, Bev, and Caroline acting silly again.



# LITERATURE



# COLLEGE MOODS

## UNDERSTUDY

The last performance was over. At this very moment, Marie supposed, Miss Lamarche was making another grand entrance at one of the numerous parties given in honor of the "star". "It isn't just," Marie breathed. "Why couldn't she have fallen ill—just once." That feeling of complete desolation and helpless wretchedness crept over Marie once more. Again, she had missed the opportunity to prove her dramatic talent, because she was only an understudy. Instead of the note of sparkling expectancy that was usually so charmingly apparent in her lovely face, her eyes had a beaten look, and her face was devoid of emotion, filled with utter hopelessness.

As she sat before her cracked old mirror, amid the litter of articles that are to be found only in a crowded dressing room—brownish colored kleenex, portions of costumes, and old shoes—and began to cream her face, the quietness of the empty theatre settled about her and pervaded the room. She wanted to break that dreadful stillness with an overpoweringly great dramatic part. She wanted to make her grand entrance on that empty stage and command an awe-stricken and adoring audience to rise to its feet in acclamation of her greatness.

The finality with which she wiped her face reflected her determination that this experience *would* come to her. The promise of "sometime", itself, seemed to permeate the air about her with the distant clapping of hands. Yes! *Sometime!*

By MARY ELLEN FOLAND.

## OUR PEACE

There is peace here—  
Amid the bustle of automobiles  
And the rumble of trains.

There is happiness here—  
Where mainliners pass overhead  
And factory whistles pierce the air.

There is living here—  
And freedom in work.  
This is peace.

By MARY ELLEN FOLAND.



## FRIDAY!!

With black thoughts, I arrive home on Friday afternoon and filing into the house. I ask if there have been any telephone calls, knowing doggone well there haven't. What's the use? No one likes me, and that's all there is to it!

I sit around the house and moan about the dull weekend ahead. Suddenly a sharp ring shatters my sorrowful reflections . . . the telephone; but I won't answer it, I won't! I won't! The call *is* for me, but I sit motionless, trying to decide which one of my *girl* friends it is. Then Mother says slyly, "Dear, it's a male voice." With the agility and grace of a Saint Bernard but the speed of a Greyhound, I rush to the phone; pause just long enough to take one good breath; and answer with a genteel, but expectant voice, "Hello???" He is asking me to go out—tonight! Rather a late date, isn't it? Oh, heavens! What shall I do? I make feeble—very feeble—excuses and finally decide, "Yes, Yes, I think I can manage it. Nine will be fine." I hang up the receiver. All is over. I take another deep breath—and then—quietly—collapse!

By MYRNO POVEY.

## THE NIGHT MOTHER

The earth  
is weary . . .  
Night  
gently spreads  
her soothing cloak  
and folds the earth  
close.

The earth  
is still . . .  
Only  
heaven's lantern  
and sky candles  
keep silent watch  
while the earth  
sleeps.

By YVONNA PRATHER.



## MY ROAD

There is a road I love. I can't remember right now just where it is, but I know I have been there.

It was a dirt road, and the clay earth, I remember, was damp and cool beneath my feet. Oceans of green stretched away on either side of my road. Slender brown branches sought to strike my head as I passed under their gentle, graceful network. As I walked, I watched constantly for the frail lavender flowers that were scattered along the way. They were not growing close together, nor yet far apart, but they were spaced so that each new plant filled me with the ecstatic joy of discovery. A cool breeze washed my face and playfully tangled my hair as I walked, and the sky laughed—whether with me or at me I do not know, but I remember that it was happy, too. I don't think there were any birds there, but if there were, I didn't hear them, because the music of my own rapturous heart obliterated all other sound.

The road wound to the top of a high hill, turned, and dropped suddenly from my sight. All I could see was a vast, churning, pale green mist that opposed my eager gaze. I can't remember what's beyond that turn—perhaps I never went beyond. But someday I'll find myself on that road again; and when I do, I'll be sure to remember where it leads so that I can tell you. Maybe I'll even tell you where the road starts, so that you can go there, too.

By GRACE POWELL.

## THE BEAUTY OF SILENCE

Listen . . .  
Here is the music  
of perfect silence . . .  
The silence of this moment  
just before the dusk settles  
over the great white mountain  
when the whole world  
is stilled . . .  
The death silence of the day  
lost on the tall white peaks  
fading into blue shadows  
of eternal night.

By YVONNA PRATHER.



## TRY AND TRY

"'Good ole Janet'—that's what the kids call me. But I can assure you that they really mean, 'She's a good gal, good for anything any time'—in other words 'an easy sucker.'

"It all started back in 1936 when skiing was inaugurated as the college group's latest accomplishment. The Sunday Kenny and Johnny asked me to go with them was only too thrilling—you see, Kenny and Johnny were the junior thrills of a freshman's heart. Dad doubled my weekly allowance three times to buy the ultra-smart fleece-lined ski trousers; Eleanor loaned me her size eight ski boots (I wear only a five); and other friends donated sweaters—one a gray turtle-neck affair—caps and mittens.

"At Government Camp my two male idols strapped the elongated, rented skis (they were out of my size) on my 'greased barges' filled with four pairs of wool socks to hold my feet in—and there I stood, dressed for action, at the foot of a gentle incline.

"The boys decided that I had better try something simple before they took me to the ski bowl. You know, 'simple things for simple souls'! Advance one step, slide back two, advance one step, slide back three—I just couldn't get up that hill. For the following hour I listened to 'Walk on the sides of your skis! Dig your poles in! Lean forward! Try it sideways!' And finally, 'o. k., you stay here and practice, and we'll pick you up in a couple of hours. If you get to the top of the hill, by any chance, turn around and coast.'

"Funny how boys never have any patience. But I stayed and tried and tried and tried—I made it once!—just as the boys came back, four hours later. I was going to pretend that I had skied down the hill numerous times while they were gone. I figure that one should try to hide his stupidities as much as possible. So I jabbed my poles into the snow and gave a push, just as I'd seen the movie actors do it. Yowee! I must have sailed through the air, traveling at least twenty miles an hour. Of course, I'd never thought of stopping until now, so back to the movies I went: jump sort of sideways on one edge of your ski. It would have been fine, had I only executed it properly—but I didn't. In fact one foot went this way—, and the other foot went that way—. There I was, sitting on the snow in that 'unsitableness' position, screaming with pain. And all those awful males would do was to hand me a ski pole and laugh.

"After the tears had rolled heavily enough down my cheeks, they picked me up, and Johnny carried me 'piggy-back' to the car.



"Oh, yes, it was two months before I quit limping on two sprained ankles, but I tried again against Dad's, the doctor's, and every one else's advice. And last year I came in tenth in the Junior Ski meet at Timberline—well, at least I placed."

By SHIRLEY CASEBEER.

## THE NIGHT AFTER EXAMS

The whole dream was like a horrible but fascinating, surreaslistic dilemma. It was like being lost in a vast, deserted Fun House, in which all the complex mechanisms had gone completely berserk and were operating crazily.

Each of the noisy concessions seemed to become uncanny, fearful human personalities. A huge barrel imprisoned me and kept me gleefully churning 'round and 'round in its polished crimson interior. This mad whirling whipped my long black hair about my throat, and I struggled hysterically to prevent it from strangling me. Just as I had reached such an exhausted state that I could fight no longer, a weird, purple octopus arm thrust itself in and jerked me from the clutches of the monster, only to strap me down on the back of a fantastic mechanical grasshopper that whistled and grinned wickedly at my terrified stupefaction. He began to dance insanely through a room completely furnished with ice-blue mirrors that gave my captor even more grotesque proportions than his own hideousness allowed him.

A heavy, sickening scent of my favorite gardenia perfume suddenly pervaded the room. My mind was in such a dazed tumult of horror and agony and confusion that my head seemed to snap off and on again with each wild leap, and I wished with the fervor of a doomed criminal that I were already dead. I closed my eyes to blot out the crazy leaping images that filled the room. A violent cessation of motion, a sudden rush of wind on my face forced my eyes open again, and I realized that I was hurtling swiftly down an endless silver chute. As I gulped faster and faster for breath, a mammoth turquoise and scarlet butterfly with glassy gold eyes swooped down upon me, and I found myself soaring breathlessly through white clouds. Suddenly a second butterfly approached; and before I knew what had happened, it had blown me from my perilous seat, and I was falling helplessly into a dreadful doom.

By YVONNA PRATHER.



At Your Service with  
Every Banking Facility

The  
**UNITED STATES  
NATIONAL BANK**

PORTLAND, OREGON  
Member F.D.I.C.

» **NAMES - BOLING «**  
**BUSINESS SCHOOL**

Complete  
Secretarial  
Course

604 Woodlark Bldg. BEacon 6784  
Night Classes Tuesday and Thursday

**Hawthorne Hardware Co.**

DUTCH BOY PAINTS  
BUILDERS SUPPLIES

Cor. S. E. 36th and Hawthorne - LA. 4187

**Shaw's Surgical Company**

620 S. W. 11TH AVENUE  
LABORATORY SUPPLIES

◆ **NATIONALLY KNOWN WATCHES  
RINGS, JEWELRY OF ALL TYPES  
BUDGET TERMS AT NO EXTRA COST**

**ROY and MOLIN**

JEWELERS and OPTOMETRISTS  
316 S. W. Alder, bet. Third and Fourth

Compliments of

**L. M. Schwary and Sons**

MAYWOOD BEAUTY SHOP..... Portland, Oregon  
SPELLMAN'S BUSTER BROWN SHOE STORE..... Park and Morrison  
NEUBAUER'S GROCERY AND BAKERY..... 1735 S. W. 11th Ave.  
BERNSTEIN BROTHERS ..... 827 S. W. 2nd Ave.  
FRANK A. HEITKEMPER, Jewelers..... 725 S. W. Alder St.—BE. 6174  
LILLIAN HOPE BEAUTY SALON, V. B. Stangell, Prop... 1503 SW 13—AT. 5966  
KARL J. KLEIN, Jewelers..... 610 S. W. Broadway—AT. 3718  
SIBERRIAN..... 1638 S. W. Broadway  
LEWIS D. WANZER, Life Insurance, Endowment Incomes, Annuities  
..... 214 Corbett Bldg.—AT. 5201  
THE MACCABEES LIFE INSURANCE CO. .... 421 Artisan Bldg.—AT. 9406  
OSCAR AUESTAD ..... 315 S. W. Pine St.—BE. 4347  
ETNA'S FOOD SHOP, Home-Cooked Quality Foods..... 1507 S. W. 13th Ave.  
JOY THE TAILOR ..... Portland, Oregon  
BURKHARDT FLORISTS ..... 2280 W. Burnside St.—BE. 6151  
ST. FRANCIS DRUG CO. .... S. W. 11th and Main—BE. 3646  
LIBERTY FUEL AND ICE CO. .... 201 S. E. 3rd Ave.  
GOSS BROTHER'S DAIRY..... 3800 N. E. Sandy—GA. 4050

**"The Store For HOME ENTERTAINMENT"**

BOOKS  
MUSIC  
RADIO

CRAFTS and MODEL BUILDING  
HOME MOVIES  
ARTISTS SUPPLIES

GAMES  
CAMERAS  
RECORDS

**THE J. K. GILL COMPANY**  
S. W. FIFTH AVENUE AT STARK

**Chumley "Play-Timers"**

are the good looking play clothes you'll live in this summer! The shorts, the slacks, the play suits that are young! fun! and different!

Chumley "Play-timers"  
are exclusive with

**CHARLES F. BERG**

**A PRESENT  
WITH A FUTURE**

When you send a present of Sterling silver, you know it will bring years of happiness. Our sterling designs—many of them exclusive patterns—give you unlimited selection.

Terms Available.

**PAUL FELDENHEIMER, Inc.**  
JEWELERS  
607 S. W. BROADWAY

**THE BUSH PHARMACY**

Corner S. W. 11th and Montgomery

PRESCRIPTIONS  
FOUNTAIN  
MAGAZINES

Phone BEacon 6726  
PORTLAND, OREGON

**SUNFREZE**

**SCHAPP'S Restaurant Inc.**  
QUALITY FOODS

Phone BEacon 9703  
961 S. W. Broadway - Portland, Oregon

**Hollywood Beauty Salon**

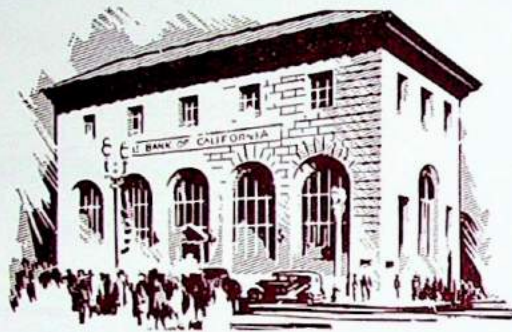
903 CORBETT BUILDING  
S.W. 5th and Morrison—AT. 2546  
Open Thursday and Friday Evenings  
by Appointment  
Popular Prices on All Kinds  
of Beauty Work

**PORTLAND LAUNDRY CO.**

1740 S. E. UNION AVENUE  
LAUNDERERS and DRY CLEANERS  
Portland, Oregon Phone EA. 1166

Compliments of

**J. C. PENNEY CO.**



# THE BANK OF CALIFORNIA

NATIONAL ASSOCIATION

Founded 1864

In Portland . . . S. W. Sixth Avenue and Stark Street

San Francisco    ::    Seattle    ::    Tacoma

MEMBER F. D. I. C.

Compliments

of

*Meier & Frank Co.*  
417th 15th - MARSON AND ALDER  
PORTLAND'S OWN STORE



Henry Berger  
Studio

PHOTOGRAPHS  
FOR ALL  
OCCASIONS

BEacon 0640  
715 S. W. SALMON STREET

**“That our daughters may be as  
cornerstones, polished after the  
similitude of a palace.”**

— Psalm 144:12



Compliment of

MOTHERS' CLUB OF ST. HELEN'S HALL JUNIOR COLLEGE

FEATURING . . .



Protected by Metal Cap . . . with Extra Proteins

## ALPENROSE DAIRY

H. C. Cadonau, Proprietor

Cherry 2424

### Sweet Home Restaurant

Charles A. King

SHORT ORDERS :: DINNERS

HOME MADE PIES

1610 S. W. 11TH

ATwater 1018

### LUBLINER'S FLORISTS

Where Flowers Are  
Always Satisfactory

616 S. W. MORRISON STREET



AUTOGRAPHS