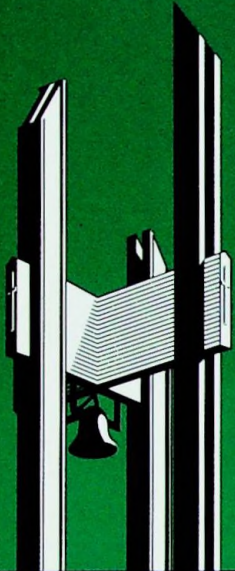
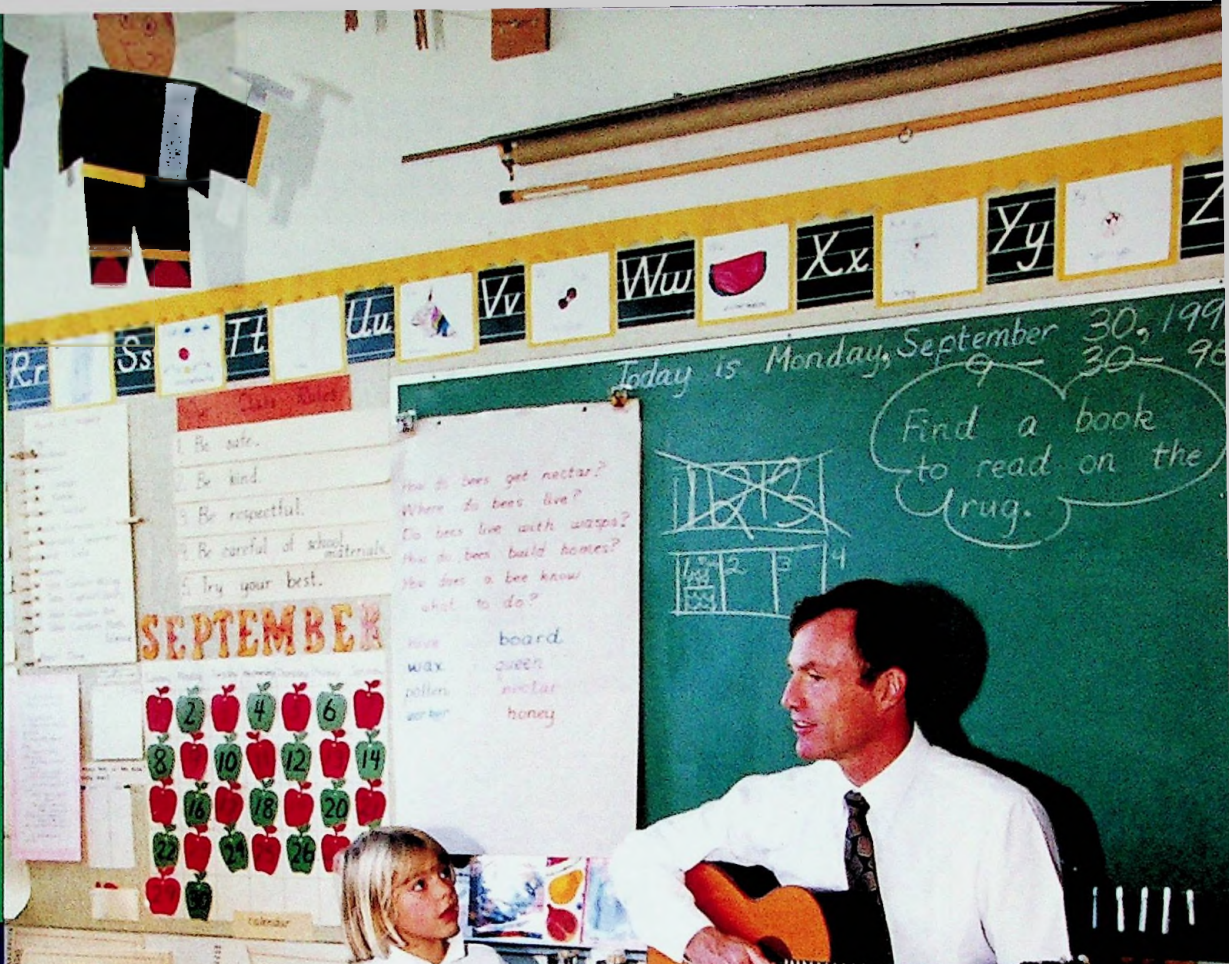


THE OES Belltower



OREGON EPISCOPAL SCHOOL



A Letter from the Headmaster

Dear Friends,

The past two months have been an exciting time for my family and me, and I would like to take this opportunity to share with you some impressions from our first few weeks as newcomers to Portland and to the OES family.

After our move from the Cate School in southern California in early July, we got ourselves settled in a very comfortable house in Raleigh Hills, only a few minutes away from school. I confess to feeling real pleasure in having some space in our new abode for two growing and at times rambunctious kids, since we lived in an increasingly cramped dorm apartment at the Cate School. But I also confess to some genuine anxiety as a newly minted homeowner, since now we have a lawn that needs attention, and we have never "done lawns" before. I confess, too, to having wandered down to OES's playing field more than once and, when no one was looking, getting down on hands and knees to admire with considerable envy the fine state of the School's turf.

After traveling to the east coast and then to Hawaii for two wonderful conferences in July and August, I began the new school year in earnest in late August by having conversations with faculty, staff, and trustees in order to get to know

OES better and to understand from multiple perspectives where the opportunities lie to make a fine school even better. I hope to have a relaxed conversation with all faculty, staff, and trustees by the end of the first year; my chats so far have been stimulating and illuminating, and are always a highlight of the day.



We kicked off the 1996/97 academic year in a more formal way with a wonderful day-and-a-half all-faculty-and-staff retreat at Menucha, a breathtaking site on the southern palisade of the Columbia River, about an hour away from Portland. There I had an opportunity to share a few thoughts about the importance of vision, the connection of mission to vision, and my belief in the essential importance of OES's mission to educate our students so that, in the words of the School's mission statement, "they may realize their power for good as citizens of local and world communities." In future editions of *The OES Belltower* I look forward to sharing with you more thoughts about citizenship and its role as the central pillar upon which all of our work at OES rests.

Following the Menucha retreat came a dizzying whirlwind of events surrounding the formal opening of school, which involved meeting new parents and students, some lovely picnics, several speeches, my formal installation as Headmaster and,

best of all, much laughter and fun. It is here that my family and I felt in its fullest form the warmth, care and friendliness that lie at the heart of the OES spirit, and we are grateful to all for such an extraordinarily warm welcome.

During the past two weeks, with the start of regular instruction, I have had a chance to observe several classes in each of the three divisions, and have been impressed with the professionalism of our faculty, the quality of their instruction and, most important, their manifest love of their students. Last year the Pacific Northwest Association of Independent Schools (PNAIS) completed its report on OES, as part of our regular accreditation process, and what I have seen in the classroom confirms overwhelmingly what the PNAIS committee wrote in its summary, namely, that OES "stands as an exemplar among independent schools for whom establishment of a mutually supportive, respectful, and nurturing community is a value." It is a privilege indeed to be working with such a dedicated and spirited group of educators.

The first year for me will continue to be one of getting to know the many marvelous people who make up the OES family; celebrating our successes while listening carefully for opportunities for improvement; supporting the three divisions and the admissions, business and development offices; and getting to know more about Oregon and the Northwest. It is the start of a rare and wonderful adventure, for which I am very grateful. I look forward to meeting and hearing from as many of you in the OES family as possible in the weeks and months to come.

Sincerely,

A handwritten signature in cursive script that reads "Charles K. Bergman". The ink is dark and the signature is fluid and personal.

Charles K. Bergman
Headmaster



OREGON EPISCOPAL SCHOOL

At Oregon Episcopal School, exceptional faculty challenge students of unusual promise to reach their highest potential within a tradition distinguished by love, compassion and trust. Founded in 1869, Oregon Episcopal School is a pre-K through 12, coeducational, independent, college preparatory school in the Episcopal tradition. A full boarding program is offered in grades 9 through 12. Exceptional teachers engage students in small classes that stress participation, creativity and a passion for active learning and living. Within a traditional framework, dynamic programs in the fine and performing arts and athletics encourage student participation. Located on the Pacific Rim, the School emphasizes global studies and an international outlook. Virtually all graduates attend fine colleges. Responsible citizenship, ethics and community service are important at OES — a School where students are encouraged to reach their fullest potential in a loving and caring environment.

Photos Philip McCarty, Jennifer Ensbury, Brian Foulkes, Sarah Gunderson, Rothrock, Adams & Faith Photography

Stories Helen Kirschner '85

Editors Helen Kirschner '85, Rothrock

Layout and Design Graphic Solutions

Production Graphcon Design+Type

Printer Paramount Graphics Inc.

Cover Photo Phillip McCarty

The OES Belltower is published by OREGON EPISCOPAL SCHOOL, 6300 SW Nicol Road, Portland, Oregon 97223. If you would like more information on the School, please call (503) 768-3157.

OES Enters Exciting New Phase in its History



▲ *New Headmaster Charlie Bergman addresses the OES student body on Opening Day.*

Oregon Episcopal School is alive with transition, renewal and celebration this fall, with a new building gracing its campus and a new leader at the helm. For our students, faculty, staff, and parents, this has been a time marked by extraordinary spirit and optimism.

After several months of preliminary fundraising, the construction of the new Middle School began late in fall 1995. Over the next year, the OES community stepped forward to raise the remaining funds under the leadership and tireless efforts of numerous volunteers. Today, the completed building stands a proud two stories and its halls are active with the activities of Middle School students. For more about the Middle School, please see page 40 of this *Belltower* issue.

This past spring was also marked by a farewell to Headmaster Peter W. Stevens after six years of lead-

ership, and a welcome for Charlie Bergman as OES' new headmaster. Charlie joins OES from the Cate School in Carpinteria, CA, where he was the Director of Asian Studies. For more about Charlie and the Bergman family, please see page 8 of this *Belltower* issue.

During the opening days of the 1996-97 school year, Charlie won the hearts of the OES community with his enthusiasm for the mission of the School and for his accessibility and optimism. The cover of this issue of *The OES Belltower* introduces Charlie and one of his many talents: singing with OES first graders, among whom is his daughter, Elizabeth. The OES community anticipates many happy and prosperous years ahead under his leadership.

Show & Tell

Opening Day

► Headmaster Charlie Bergman follows Lower School acolytes to the belltower circle for his first official address to the OES student body.



◀ Upper Schoolers head off for their wilderness backpacking trip with some words of advice from their headmaster, Charlie Bergman.



▲ Opening Day was a time for catching up with classmates. Seniors Steven Chiang and Elizabeth Savage and freshman John South take a break in the Great Hall.



▲ The Faculty/Staff Retreat at Menucha in August showcased the talents of OES Upper School teachers Chris Harris, Rich Sherwood, and Carol Wyatt, who sang about the merits of being a good citizen.



▼▲ Upper School student body president Annie Warner helped initiate Charlie Bergman as an "Official Aardvark," presenting him with one of the necessary accoutrements of his post as headmaster.



▲ Lower School teacher Doug Whitmore and an attentive group of first graders line up outside Scott House.





◀ ▼ The dorm students got the school year off to a good start with a day of miniature golf. The 1996-97 school year began with 52 students in the boarding community; 32 of them are international.



▶ OES alumni were in for a surprise this year at the 5th Annual Alumni Soccer Tournament, when the OES boys' varsity soccer team swept the games. The alumni took the loss in fine spirits, and the boys' team got the 1996-97 season off to a winning start.



◀ ▲ Over 100 OES women of all ages joined 23,000 other walkers and runners for the Race for the Cure this fall, and upon returning to campus were served brunch by OES men (fathers, spouses, faculty, staff, and students).



Show & Tell

OES Celebrates the Installation of Charlie Bergman



▲ Trustee Splinter Wren and US Chaplain and English teacher Jonathan Voorbees joined others from the OES community for the reception following the installation. Among the guests were parents, alumni, grandparents, trustees, students and friends of the School.



◀ Charlie Bergman lauded the OES mission statement and discussed his vision for the School during his installation address on September 10, 1996.

► Alumnae Margaret Spring '95 and Erica Hagensen '93 had a lot to catch up on at the installation reception.



◀ On behalf of the faculty and staff of OES, MS drama and religion teacher Father David Pace presented Charlie Bergman with OES fleece jackets for the entire Bergman family, with a joke about California residents moving to Portland (the Bergmans hail from Carpinteria, CA). Charlie also received gifts from the trustees, students, chaplains, alumni, and the parent body.

► Catherine Bergman (on right) was also welcomed to the OES community. Here, she and LS Japanese and Global Studies teacher Lilly Moore visit at the installation reception. The Bergman's daughter, Elizabeth, is in OES' first grade.



▲ Volunteers' Common Link Chair and OES parent Susie Gundle (on right) and parent Kathleen Ames show their support for OES' new leadership.



▲ Trustee President John von Schlegell and wife Fran and former Trustee President Elisabeth Lyon congratulate Charlie on his new post.



▲ Trustee Vice President Sheryl Acheson talks with new trustee and parent Matthew Essieh and his wife Ella. The Essiehs have two children at OES; Morayor is in the primary class and Kwame is in the second grade class.

New Headmaster Adds Life to OES

Charlie Bergman Joins OES Community

Charlie Bergman has accomplished what the leader of any independent school or non-profit organization dreams of doing. During the few short months since he joined the OES community as its new headmaster, he has generated excitement among faculty, staff, parents, trustees, alumni and students about what can seem a rather esoteric subject: its mission statement.

"You're going to hear a lot about this from me," Charlie admitted to many of the audiences of the numerous gatherings he attended in the first days of the new school year. "OES has a wonderful sense of mission, and I like to talk about it!"

Since joining OES, Charlie's enthusiasm and optimism for the School and its community has been infectious. He is a self-proclaimed optimist. When he talks to students, he emphasizes simple things: Take care of yourself, he says, and respect others. Respect OES. Do everything as well as you can. When he talks to faculty, staff and parents, he emphasizes many of the same things.

In venues ranging from his own installation as headmaster to an Upper School students' "Town Hall" meeting to the Menucha faculty/staff retreat, Charlie reads the mission statement aloud, explores the meaning of its components, points out why it works, and ponders how the OES community can make it a living statement.

"At the end of the day, what are we all doing here?" Charlie says. "Our mission statement provides the answer: ultimately, we are here to teach kids, and to help them realize their power for good as citizens of local and world communities."

Upper School Head Anne Cass agrees. "When I first interviewed at OES, I was really impressed that the mission statement was visible everywhere on campus," she remembers. "Since Charlie has

come on board, he's given it new life, and his enthusiasm for our mission has me excited all over again!"

Charlie was appointed by the Board of Trustees in February of this year and came on board in July. He comes to OES from Cate School, in Carpinteria, CA, where he was Director of their Asian Studies program.

The background of OES' new headmaster is made up of more than just the hallowed halls of independent schools like Cate and OES, however. Prior to joining the faculty of Cate in 1989, Charlie worked for IBM Corporation for nearly 10 years, starting in their Santa Barbara operation but eventually landing in China, helping to establish IBM China Corporation in Beijing.

In what he calls a "pressure-cooker atmosphere" of American business activity in the Far East during the mid-80s, Charlie learned that although his fellow U.S. compatriots were doing an enormous and growing amount of business in cities like Beijing, they were also making serious linguistic and cultural gaffes that put them at a disadvantage compared to their frequently more sophisticated competitors. They simply had not had the opportunity to learn about Asia



▲ Charlie Bergman, his wife Catherine, and son William. Also in the Bergman family is Elizabeth, who is an OES 1st grader.

in school; Asian studies, at the time, were not mainstream in either secondary or higher education.

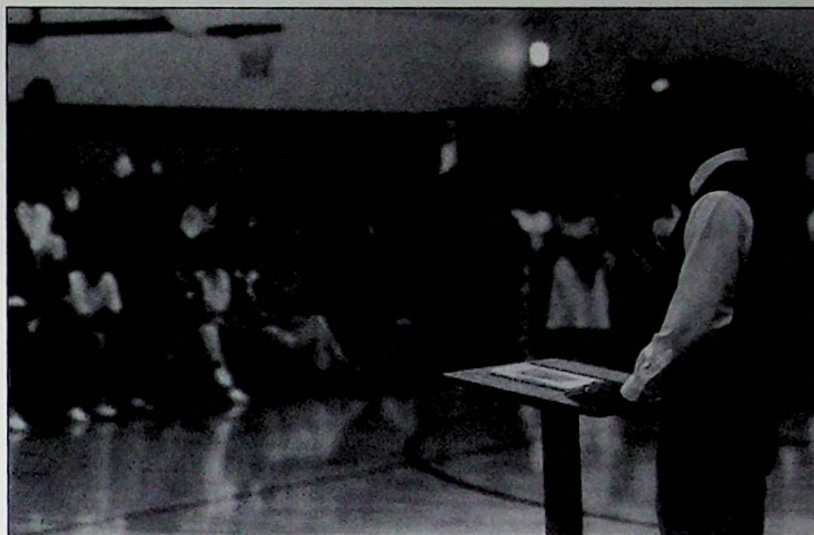
"When my assignment ended and I returned to IBM USA, in San Francisco, I realized that I needed a change. I thought about what I'd learned in China, and I wondered if starting an Asian studies program on the secondary level would be feasible," Charlie remembers. He drafted a proposal for a curriculum plan and approached Scott McLeod, the headmaster of Cate School. Not only was it feasible, McLeod told Charlie, but it was a concept that had already been explored at Cate. Charlie joined their faculty in 1989.



◀ Faculty and staff have enjoyed Charlie's unique brand of energy and optimism.

Charlie's experience in China influenced more than his professional life. In the early days of his stint with IBM China he met his wife Catherine (who also goes by her Chinese name, Shu-lin) who was employed there as a systems engineer. After returning to the States in 1988 Charlie asked her to join him. Catherine was no stranger to the U.S., having done computer studies graduate work in Dallas and at the University of California, San Francisco. Within a few months of her return, Charlie and Catherine were engaged, and they were married in March of 1989.

The Bergmans have two children, Elizabeth, 6, and William, 3. Elizabeth is in OES' 1st grade, and is treated to periodic classroom visits from her father. In addition to the customary and time-consuming duties of any independent school administrator, Charlie is diligent about spending a part of nearly every school day in various classrooms across the Lower, Middle and Upper Schools.



▲ In the opening days of school, Charlie spread the word about his admiration for OES' mission statement.

"Charlie's love of children and his talents with them were evident from the start."

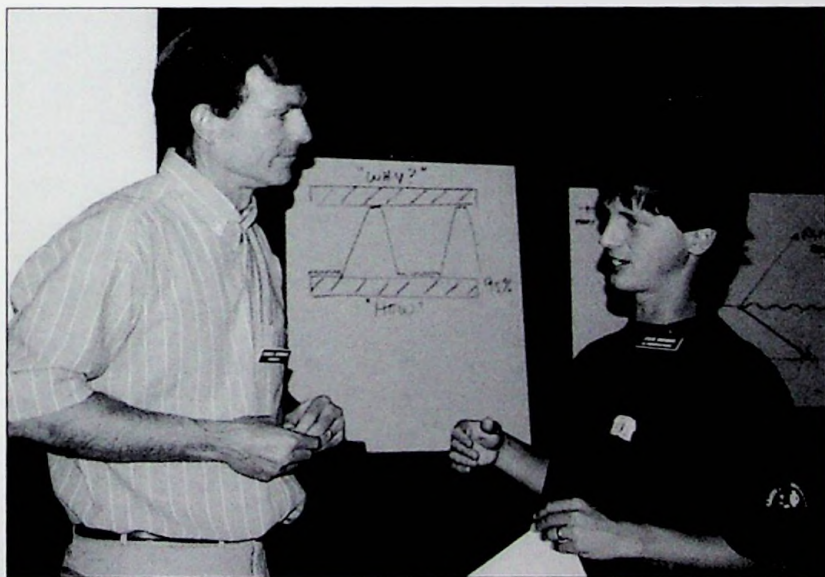
Ultimately, Charlie is quick to praise OES' excellent foundation, and congratulates the School's

"Among the principal commendations in the report is an extraordinary statement: 'OES stands as an exemplar among independent schools for whom the establishment of a mutually supportive, respectful, and nurturing community is a value,' Charlie points out.

"I hope that after an exhausting year preparing for PNAIS review that the entire community is patting itself on the back for a job well done," he continues. "The faculty and staff at OES deserve congratulations for all the great work they've been doing. I'm delighted that I will now be a part of such a fine group of professionals, and look forward to continuing such a strong tradition."

Judging by his first days in the OES community, Charlie Bergman is well on his way to making the School's mission, as he says, "a living statement." Faculty, parents and alumni invariably note that he has infused the campus with a new sense of energy and optimism.

"Life in a school like OES is five percent vision and ninety-five percent details—all the work down in the trenches," reflects Anne Cass. "Charlie is doing a really good job of reminding all of us about that critical five percent."



▲ Charlie talks with Steve Brennan, a MS humanities teacher who is new to OES this year, at the Menucha faculty/staff retreat.

"Charlie has made many visits to the Lower School over the past two months, and I've seen him mesmerize a 3rd grade class with a card trick and charm the Beginning School with his singing," says Lower School Head Harvey Zendt.

faculty and staff on the final report of the Pacific Northwest Association of Independent Schools (PNAIS). The Association unanimously recommended this past spring that OES be reaccredited for the next eight years.

In Touch With OES

Alumni Board Auction Dinner



▲ Current parents Eileen and David Johnson were the successful bidders on the Alumni Board Dinner, an annual donation to the OES Auction. The Johnsons enjoyed a multi-course meal at their home, and members of the Board took a break midway in the gourmet preparations for a photo.



▲ Alumni Board President Jack McCann Jr. '84 prepares to serve the coup de grace, a rich chocolate cake donated by Alumni Board member Marilyn De Vault '67 and her business, Piece of Cake.



▲ Ed Haessler '71 donned an official chef's hat for the Alumni Board Auction Dinner. The Johnsons and their guests were treated to Ed's delicious Caesar salad.

Alumni After-Hours



▲ Alumni escaped the March rain for Alumni After Hours, held at Portland Brewing.



◀ Barry Daigle '80 and his daughter Abbie made an appearance at Alumni After Hours, where Abbie demonstrated her walking prowess.



▶ Anne Paul '65 and a friend joined other alumni from the 60's, 70's and 80's at Portland Brewing.

Alumni Reunion '96



◀ Members of the Class of '46 were joined by Jack McCann Jr. '84, Alumni Association President, as they participated in the 1996 OES graduation as part of their 50th reunion.



▲ Reunion Weekend festivities gave Allie Zimmer and Alicia Cash, both members of the Class of '76, an opportunity to spend time with OES faculty member David Streight.



◀▲ Members of the Class of '86 returned to the OES campus to celebrate their 10th reunion, and a larger group gathered at BridgePort Brew Pub later that day.

In Touch With OES



▲ Sean Kuni '81 and classmate Bonnie Polts Shorin '81 were among the guests for the Reunion Weekend barbecue.



◀ Eleanor Poorman Hamilton '26 joined other alumni during Reunion Weekend to celebrate her 70th reunion.



▲ Members of the Class of '36 celebrated their 60th reunion together, attending the Reunion Weekend luncheon on the OES campus.



▲ Reunion '96 gave OES alumni and friends an opportunity to catch up with one another.



▲ Members of the Class of '51 gathered on the OES campus for their 45th reunion.



▲ Gretchen Graham Lange and Kathy Karafotias, both of the Class of '66, reminisce over photos from OES' past.



▲ Winde Bekins Strachan '86 and her daughter, Makenna—a future OES student?

Alumni Soccer Tournament

OES alumni, faculty, students and friends gathered on the OES soccer field in September for the Fifth Annual Alumni Soccer Tournament. Eight teams competed, and although the boys' Varsity won the tournament, the official alumni victor was the Mid-80s team. Team players included Brad Whitcomb '81 and his wife LaVonne, Greg Simon '85, Paige Parker Kuni '84, and Marilyn Drinkward '88.



▲ The Alumni Soccer Tournament can get serious! The Late-80s team gathers for a pre-game pep talk.



◀ A strong faculty team made up of OES soccer coaches and their spouses joined the fray this year.



◀ Young alumni came back to campus for the Alumni Soccer Tournament. Here, members of the Class of '95 rest on the sidelines between games.

OES' 1996 Founders' Day Celebrates 100th Birthday of Alumna Beatrice Paget '15

Oregon Episcopal School is delighted to announce that Beatrice Thurston Paget '15, Oregon Episcopal School's oldest living alumna, celebrated her 100th birthday on October 11, 1996. The OES community will have the opportunity to celebrate with her at Founders' Day on November 12, when she will be honored as the School's Bishop Benjamin Wistar Morris Distinguished Alumna for 1996.

Beatrice Paget is a natural choice for the award which recognizes and honors alumni of St. Helens Hall and the Junior College, Bishop Dagwell Hall and OES for their achievements in their professional careers and their contributions to the community.

Beatrice was born in 1896 in Wells, OR, and upon graduating from St. Helens Hall in 1915 attended the University of Oregon. Her real adventures began after her second year at the University. Beatrice was offered a job with the Chautauqua, an organization which provided culture prior to the radio age to small towns across the U.S. and the world with symphony concerts, operas, plays and lectures. Beatrice was a natural at promotion, and decided to continue her work with the Chautauqua organization rather than return to the University of Oregon. At age 19 she was traveling as far as New Zealand and Australia to arrange cultural bookings.

During her times with the Chautauqua, Beatrice met her husband, Lowell Paget, and they were married in 1919. After finishing their undergraduate studies at Oregon State University in 1921, Beatrice and Lowell Paget entered Northwestern School of Law and graduated in 1924. Beatrice was one of only three women in her graduating class. She and Lowell became involved in Oregon politics, and Lowell was elected to the Oregon Legislature in 1932 and was appointed the



▲ Beatrice Thurston Paget '15, the 1996 recipient of the Bishop Benjamin Wistar Morris Distinguished Alumni Award.

National Republican Party Chairman for Oregon in 1960, a position he held until he died in 1967.

Beatrice became the President of the Oregon League of Women Voters in 1935 and successfully lobbied for passage of Aid to Families with Dependent Children, arguing that single women should receive support so that their families would not be separated.

Oregon Episcopal School has enjoyed Beatrice's recent involvement in many aspects of the School. She was an honored guest at the 125th Anniversary Founders' Day Gala in 1994, and appeared on the cover of the fall 1995 *OES Belltower*, posing with other key OES volunteers on the site of the now-completed new Middle School building. She has truly been an inspiration to the OES community,

and the School is delighted to honor her with the 1996 Bishop Benjamin Wistar Morris Distinguished Alumni Award.

In addition to honoring the life and achievements of Beatrice Paget, Founders' Day will feature Northwest author Robin Cody. Cody will talk about writing, Northwest literature, and, most notably, his 1,200-mile canoe trip down the Columbia River. His book, *Voyage of a Summer Sun*, is an account of this trip, and each guest will receive a complimentary autographed copy at Founders' Day. Tickets for Founders' Day, which will be held at the Multnomah Athletic Club from 7:00-9:00 p.m. on November 12, are still available for \$25 per person, and can be reserved by calling the Alumni & Development Office at 768-3153.



The Mustard Seed

Annual Report of Giving

"...verily I say unto you,
if you had faith as a grain
of mustard seed you shall
say unto that mountain
remove hence to yonder
place and it shall remove;
and nothing shall be
impossible unto you."

Matthew 17, verse 20

Oregon Episcopal School

Dear Friends,

As the new Headmaster of Oregon Episcopal School, I am pleased to be able to congratulate the OES community on all of its fundraising accomplishments of the past year. Perhaps the strongest of many wonderful first impressions since my arrival this summer is of the extraordinary dedication to the support and financial well-being that I have seen evident within the entire OES community.

This support manifests itself in many ways: it can be seen in the hard work of the volunteers who make the annual fund and auction a success; or in the dedication of the trustees who do the essential leg-work in making the case for OES with major donors; or in the work of the development office staff in keeping the School's development efforts on track; or in the generosity of the many donors who have ensured that OES is able to reach its critical fund raising goals.

One of the great pleasures in my day is the opportunity to write a note of thanks to each donor to OES, and it is indeed a thrill to have said "thank you," and then step outside and glance at the new Middle School building, whose very real form is elegant testimony to what generous donors are able to accomplish at an independent school.



▲ *New Headmaster Charlie Bergman with Lower School Assistant Head Sydney Gold and former Headmaster Peter Stevens.*

There are many volunteers who need to be thanked for their invaluable efforts on behalf of our School. The 1995-96 OES FUND had a remarkable year under the leadership of chairs Julie Drinkward and Beth Warner, who worked with an energetic group of volunteers and raised a record total of over \$373,000. My wife Catherine and I had the opportunity to join all of you at the Around the World Auction in May, which raised \$167,000. Pat Karamanos and her corp of volunteers put in many hours over the school year, and are to be commended on their dedication to what was a spectacular event.

Peter Bechen also deserves thanks and congratulations for his work as Chair of the Middle School Campaign Committee. His Herculean labors along with the efforts of the numerous other campaign committee members have ensured that the campaign has stayed on track—the new Middle School building is the clearest evidence of that! And, of course, none of these volunteer accomplishments would have been possible without the direction of the Board of Trustees, under the superb leadership of its Chairman, the Most Rev. Robert L. Ladehoff, and President John von Schlegell.

Other thanks are also due to Sue Nicol, Director of the Capital Campaign, who finished her work at OES at the end of August and is on her way to new challenges and adventures. Without Sue's vision and hard work, we simply would not have the successful campaign that we are blessed with today.

I also want to take the opportunity to welcome OES' new Director of Development, John Lauerman, who began work in September. John comes to us with more than fifteen years of development experience in independent schools, most recently with Lake Forest Academy in Lake Forest, Illinois. John is a warm, engaging man with a great sense of humor, and OES is fortunate indeed to have found a man of his professionalism and experience to assume leadership of the development office.

My family and I feel honored to be associated with a school as fine as OES. I look forward with great anticipation and much excitement to be working with all members of our community in the months and years to come to ensure that OES builds on its many successes, strives always to be the very best that it can be, and fulfills its destiny to be a citadel of educational excellence in the Pacific Northwest.

Sincerely,

Charles K. Bergman
Headmaster

Dear Family and Friends of OES:

On behalf of the Board of Trustees, I would like to officially welcome you to the next stage of growth and achievement at OES. We are building on over a century and a quarter of accomplishments, setbacks, challenges and successes. As Bishop Ladehoff recently observed, OES is a decidedly different place from the school envisioned by Bishop Benjamin Wistar Morris 127 years ago, yet we continue to build on that same core vision and ethos.

I am particularly pleased to present our newest steward and leader as we approach the year 2000—Mr. Charles K. Bergman. I hope you will all take the time to get to know Charlie. He is accessible with a sincere interest in what you have to say. He loves children, and he and his wife Catherine (you should take the time to meet her, too!) have two of their own. Elizabeth is in OES' first grade, and William is three years old.

The Trustees selected Charlie because he is a visionary, an enthusiastic educator with a passion for excellence, and he has a deep respect for teachers and what they do. Furthermore, he understands the healthy balance between "don't fix it if it isn't broken" and our stated goal to "take OES to the next level."



▲ Board President John von Schlegel takes the podium to say a few words at the OES Around the World Auction, held in May.

We are building on a record year at all levels of development, and our volunteers are to be commended for their tireless energy and attention to our most successful fundraising efforts over the past year. The OES FUND, chaired by Julie Drinkward and Beth Warner, raised \$373,204, exceeding its goal by more than \$18,000. The OES Around the World Auction was headed by Chair Pat Karamanos, and netted an amazing \$167,000 on proceeds of \$205,000. It has been exciting and gratifying to see such commitment from the community to both of these annual fundraising achievements.

The first phase of the Master Plan effort was led by Peter Bechen, and successfully raised over \$4.5 million dollars from the OES community and outside foundations for the new Middle School and Bishop Dagwell Hall renovations. It's wonderful to see the new Middle School, completed and in use—it's truly a testament to what this community can do!

As we approach the next level, we can all take great pride in what OES stands for and what has been accomplished. We must also rededicate ourselves to the time, energy, money, volunteering and focus required to make a great school even better. I believe that we have as much reason to be optimistic as at any time in the long history of OES.

I hope you and your families have a productive and healthy 1996-97 school year.

Sincerely,

John E. von Schlegel
President, Board of Trustees

**OREGON
EPISCOPAL SCHOOL
1995-96 Board of Trustees**

*The Rt. Rev. Robert L. Ladehoff,
Chairman of the Board*

*Mr. John von Schlegel,
President*

*Ms. Sheryl Acheson,
Vice President*

*Ms. Christine Kitchel,
Secretary*

*Mr. Wayne Drinkward,
Treasurer*

Mr. Dick Alexander

Mr. Marty Brantley

The Very Rev. C. Roy Coulter

Ms. Harriett Dixon

Mr. Robert Durst

Mrs. Betty Hedberg

The Rev. Lucy Houser

Mr. Sean Kuni '81

*Ms. Elisabeth Lyon,
Former President*

The Rev. Robert Morrison

Mr. David Munro

The Rev. Stephen Norcross

Mr. Chet Orloff

Mr. John Spring

Mr. Dale Stewart

Ms. Anne Thanouser

Mr. Splinter Wrenn

Ex-Officio Members

*Mr. Peter Bechen,
Pacific Rim Council Chair,
Master Plan Campaign
Steering Committee Chair*

*Ms. Susan Gundle,
Volunteers' Common Link Chair*

*Mr. Jack McCann Jr. '84,
Alumni Association President*

*Mr. Peter W. Stevens,
Headmaster*

THE OES FUND

Expenses

Financial Aid	\$682,590
Debt Service	0
Food Services & Supplies	325,913
Plant & Transportation	646,820
Instructional Support	557,506
Compensation	5,886,997
Administration & Other	892,414
TOTAL	\$8,992,240

Income

Tuition	\$6,844,985
OES FUND	379,554
Endowment	200,000
Interest	172,270
Transportation	185,043
After School Program	382,709
Boarding Program	498,217
Other	347,696
TOTAL	\$9,010,474

THE OES FUND

Goal: \$355,000

Total Received: \$373,204

SOURCE	DONORS	GIFTS
Alumni	308	\$45,890
Current Parents	439	221,960
Past Parents	118	50,536
Grandparents	44	15,301
Staffac	133	2,335
Other Friends	30	10,095
Corporations	15	7,944
Foundations	6	19,142
TOTAL	1,036	\$373,204

SPECIAL ACTIVITY (Gifts Received During 95-96 Only)

GIFTS TO ENDOWMENT

Spencer Collins Scholarship Fund	\$356,585
Edith Landry Endowment	175,000
E.E. Ford Endowment	51,830
Mary G. Stephenson Endowment	46,650
Other Scholarships	31,278
Board Designated Funds	18,466
Other	990
TOTAL Endowments	\$679,799

CAPITAL GIFTS

Master Plan - Middle School	\$1,766,039
Master Plan - BDH/Arts	168,245
TOTAL Capital	\$1,934,284

RESTRICTED FOR OPERATIONS

Financial Aid	\$5,200
Resident Department	5,000
Birthday Book	2,829
Other	6,550
TOTAL Restricted	\$19,579

ENDOWMENT FUNDS

Endowed Faculty Chairs

	1995-96 Allocation	6/30/96 Market Value
Beatrice L. Gerlinger Endowed Chair in Mathematics	22,984	729,519
Winningstad Chair in the Physical Sciences	15,584	494,652
Total Endowed Chairs	38,568	1,224,171

Endowed Scholarships

Anonymous	1,373	44,046
Katharine Graham Barbey Scholarship Fund	7,760	248,068
Barclay Ball-McCall Scholarship	8,614	273,422
John C. Bechen Memorial Scholarship Fund	706	22,407
Spencer R. Collins Scholarship Fund	54,204	1,952,754
Louise Donaldson Memorial Scholarship	1,424	45,191
Gertrude Houk & Cris Fariss Scholarship Fund	642	20,391
Edward E. Ford Scholarship Fund	1,750	55,544
Paul Gerhardt Memorial Scholarship	5,464	173,421
Melba Byrom Hess Scholarship	18,524	587,974
Jane Hiller Endowed Scholarship Fund	3,970	126,027
Jack S. Howard Scholarship Fund	819	25,985
Samuel S. Johnson Foundation Scholarship	1,402	44,501
Edith Landry Endowment	2,811	186,449
Mollie McCrea Scholarship	1,102	45,804
Barbara Hirschi Neely Memorial Scholarship	7,994	253,734
OES Endowment	8,042	255,260
Reader's Digest Endowed Scholarship Fund	2,665	84,593
Betty Lou Roberts Endowment	1,647	55,066
Mary G. Stephenson Endowment	605	50,612
St. Helens Hall Endowment	5,714	181,354
David Sellers Memorial Scholarship	905	28,738
Louise Washburn Trust	967	30,696
Total Endowed Scholarships	139,104	4,792,037

Endowed Funds

OES Memorial	Art Experience	1,535	48,707
Ruth Rose Richardson Memorial Fund	English Dept.	1,574	49,963
T.J. Kempton Endowment	Coaching Salaries	404	12,941
Faculty Enrichment Endowment Fund	Faculty Endowment	1,308	41,526
Bernice Bean Endowment	Guest Artist	106	3,376
Learning Skills Dev./Grover Fund	LS Teacher Training	1,360	43,164
Music/Economics Faculty Endowment	Music/Economic Salaries	3,923	124,520
Board Designated Endowment	Scholarships	5,712	190,066
J. Milne Manson	Student Award	26	835
Benjamin D. Dagwell Endowment	Teacher Retirement Benefits	6,380	202,511
Edward E. Ford Endowment Fund	Faculty Development	20,826	537,131
Total Restricted Endowments		43,154	1,254,740
TOTAL ALL ENDOWMENTS		\$220,826	\$7,270,948

Barclay Ball-McCall Endowment

This scholarship was established in August of 1978 by Mr. and Mrs. Ned Ball to honor the memory of their daughter, Barclay. The scholarship is designated for the daughters and sons of Episcopal clergy who are members of the Diocese of Oregon.

Mrs. Rhoda Holman Statter

Betty Lou Roberts '36 Endowment

This endowment was established in December 1992 by a generous donation from Miss Roberts.

Miss Betty Lou Roberts

Board Designated Funds

This fund was established to honor members of the OES community who have left financial provisions for the School in their estate. Income from this fund is directed to student scholarships.

Miss Peggy Boyer
Mrs. Eola Richards Keller
Frances Taylor Lundberg

Edith M. Landry Endowment

This endowment was established in 1996 through the will of former Lower School teacher Edith Landry, who was a member of the faculty of St. Helens Hall during the 1950's and 60s.

The Estate of Edith Landry

E.E. Ford Endowment for Faculty and Staff Professional Growth and Development

This fund was established in 1992 by a generous grant from the Edward E. Ford Foundation. The Fund provides support for the ongoing professional growth and development of OES faculty and staff.

Dr. & Mrs. Edgar Clark
Elisabeth & Peter Lyon
OES Auction
Mrs. Bernice W. Schlesinger



▲ Fifth grade graduates process in the chapel during June.

Katherine Graham Barbey Scholarship

Created by a bequest from the estate of Katharine Graham Barbey '13, this restricted fund provides scholarship support.

Mr. Richard S. Ivey

TJ Kempton Endowment

This endowment was established in memory of OES student TJ Kempton, who died in 1981. The funds are used to support the OES athletic program.

Mr. & Mrs. Ted Lamm

Mary G. Stephenson Endowment

Established in 1996, this endowment honors the memory of former parent Mary G. Stephenson. This scholarship endowment was established by her husband, former Trustee President Leigh D. Stephenson, and the Stephenson family.

James H. & Ann B. Clarke
Sarah N. Gurney
Mr. Ronald K. Ragen
Mr. Leigh D. Stephenson
Ms. Nancy M. Stephenson
Mrs. Rhoda Stephenson
Ms. Sarah Stephenson-Keyes

Mollie McCrea Scholarship

This fund was established during 1995 in memory of Mollie McCrea, by generous donors who wish to remain anonymous. The fund provides scholarship support to OES students.

Anonymous

Spencer Collins Endowment

Established in 1983 by a charitable remainder annuity trust created under the will of Spencer R. Collins, this endowment provides for scholarship support.

Estate of Spencer R. Collins

Susan Elizabeth McClave Scholarship

Established in 1986 to honor the memory of Susan McClave, this scholarship is given annually to a member of the OES Senior Class who best exemplifies a "giving spirit" towards others.

Burke & Barbie Rice
Mr. & Mrs. Richard Schuurman
Mr. Leigh D. Stephenson
Ms. Virginia D. Tyler



▲ Senior Kyle Hoelscher takes a break from the senior class trip during fall, 1995.

MEMORIAL/HONORARY GIFTS

In memory of Betty Ann Bosen
Ms. Paige Parker Kuni
Mr. Sean Kuni

In memory of Irene Mate Campbell
Virginia Euwer Wolff

In memory of Terence Fields and Philip Lewis Fields
Amy Fields

In memory of Lenore Reynolds Hayes '34
Mrs. William Swindells

In memory of Bruce Hoof '85
Elizabeth Kay Cashman
Jennifer Gentry
Mr. & Mrs. Bruce F. Hoof Jr.
Mr. Mike J. Smith
Cary Wong

In memory of Peggy Karafotias
Katherine Karafotias

In memory of Marion Farrell Kingery '22

Mr. H. Victor Adix Jr.
Ann C. Andersen
Mrs. Ned Barclay Ball
Ms. Nancy Baker Bosch
Garthe Brown
Virginia M. Butchart
Mrs. Jean Adix Fogg
Mrs. Helen Gamble
Great Western Chemical Company
Mr. Alan Green Jr.
Mrs. U.S. Harkson
Mr. & Mrs. Robert A. Hiller
Mrs. M.B. Hoffman
Delight Kolar Leonard
Mrs. Joanne Miller Lilley
Mrs. Mary W. Maloon
William G. Maloon
Mrs. Richard Marlitt
Oregon Historical Society
Dr. Frank & Karen Parker
Ms. Mary Rogness
Mrs. B.C. Statter
Russell & Nancy Taggard
Fred & Elizabeth Wessinger

In memory of Agnes Lundberg
Mr. & Mrs. Robert Enloe

In memory of Susan Elizabeth McClave
Burke & Barbie Rice
Mr. Leigh D. Stephenson
Ms. Virginia D. Tyler



▲ Lower School acolytes scramble to get organized before the Advent Chapel in December.

In memory of Marion Denton McKean '30
Mrs. B.C. Statter

In memory of Mildred Roberts Palmer '29
Mrs. B.C. Statter

In memory of Phyllis Henningsen Richardson '26
Mrs. U.S. Harkson

In memory of Ralph Roberts
Dr. Janet Roberts Clark

In memory of Jeanette Olson Stephens '41 JC
Mrs. Patricia Kendall Apperson

In memory of Mary G. Stephenson
James H. & Ann B. Clarke
Sarah N. Gurney
Mr. Ronald K. Ragen
Mrs. Rhoda Stephenson
Ms. Nancy M. Stephenson
Mr. Leigh D. Stephenson
Ms. Sarah Stephenson-Keyes

In honor of David Goodman-Farley and Judy Lynch
Elisabeth & Peter Lyon

In honor of Peter Stevens' Birthday
Elisabeth & Peter Lyon

In honor of Les Godowski
B.P. Beilstein

In honor of Travis White '96
Kenneth & Ann White

*In memory of the fathers of Charyl Cathey,
Cindi Marshall, LouAnn Pickering, and
Pat Freeman*
Joe & Sharon Cade



▲ John von Schlegell commends OES FUND co-chairs Julie Drinkward and Beth Warner on a record-breaking year for the School's annual fundraising campaign. The FUND's theme was "Give & Grow."

1995-96 OES FUND COMMITTEE

Under the leadership of the OES FUND Committee, unrestricted annual giving set a new record, with gifts totalling \$373,204.

Julie Drinkward,
OES FUND Co-Chair
Beth Warner,
OES FUND Co-Chair
Max Miller Jr. '74,
Alumni Chair
Priscilla & John Longfield,
Parent Chairs
Mrs. B. Mary Inkster,
Past Parent Chair
Norman & Harriet Workman,
Grandparent Chairs
Norene Galkins,
LS Faculty Chair
Michael Devenney,
MS Faculty Chair
Art Horst,
US Faculty Chair
Steve Brown,
Staff Chair

GIVING SOCIETIES

Bishop's Circle

\$10,000 and above

Anonymous
Peter & Missy Bechen
Henry Failing Fund
Mr. & Mrs. Richard Geary
Mr. & Mrs. Chai Sophonpanich

Beltlower Circle

\$5,000 to \$9,999

Anonymous
Steve & Tina Donovan
James & Marilyn Frank
Sue Lake Howell
Mr. & Mrs. Joong Heon Kim
Janet Q. Lawson
Mr. & Mrs. Surapon Lisahapanya
Elisabeth & Peter Lyon
Julie Neupert & Peter Stott
Mr. & Mrs. Ellsworth D. Purdy
Tom & Susan Robinson

Mary Rodney Circle

\$2,500 to \$4,999

Anonymous
Kay & Marty Brantley
Chieh-Hung & Chou Mei-Lin Chiang
Wayne & Julie Drinkward
Mr. & Mrs. C.R. Duffie
Brent Erensel
Mrs. Michiko Miyazaki
Cynthia Coats Railton
Robert & Jill Scheer
Shinzaburo & Keiko Shigematsu
Dr. Richard & Jana Westlund
Kenneth & Ann White

Leadership Circle

\$1,000 to \$2,499

Anonymous
Christopher & Sheryl Acheson
Richard C. & Carylin M. Alexander
Mrs. Jane M. Ammerman
Kate Bermingham
Leslie Stevenson Campbell
Richard & Nancy Chapman
Alyce R. Cheatham
John & Deborah Chessar
Lou & Marna Elliott
Clarice Johnston & Tina Enberg
Dr. & Mrs. Steven Eylar
Susan Thayer & Paul R. Farago
Mrs. Nancy Morris Feldman
Kris & Steve Gregg
Bob & Kelly Hale
Molly & Chip Harris
Henry & Sharon Hewitt
Nike Inc.
Jill & John Inskeep
Peter & Jan Jacobsen
S.S. Johnson Foundation
Michael & Darlene Kaempf
Mr. & Mrs. Heon-Shig Kang
Pat & Sam Karamanos
Mrs. George A.D. Kerr
William G. Kirkman
Wally & Cathy Krieger
Mr. Sean Kuni
Ms. Paige Parker Kuni
Ed & Margaret Kushner
Wes & Nancy Lematta
John & Priscilla Longfield
Pam & Bob Matheson
Tom & Karen McClung
Dr. & Mrs. Young So Moc
Tatiana Moller-Lawson
Leslie Mackenzie & Mickey Morey
Scott & Sue Nicol
Ingolf & Margaret Noto
Dr. Frank & Karen Parker
Debra Platt
Jeff & Kathryn Rippey
Mr. & Mrs. Joe Robertson
Drs. Joe & Margaret Robertson
Barbara Robins
Mary & Al Rollins Jr.
Susan & Scott Russell
Mrs. Howard Sargent
Mr. & Mrs. James Sasalos
Chuck & Tish Shepard
Wayne & Diane Somers
John B. & Susan Spring
Mr. & Mrs. F.M. Stevens
Mr. & Mrs. Wm. T. C. Stevens
Taparatt Boonthanaik & Veerayuth Suppipat
Mrs. William Swindells
David & Terry Taylor
Steve & Meri Taylor
Thomas D. Taylor Foundation
Tektronix Foundation
Mr. & Mrs. Wei-chen Teng
David & Nancy TenHulzen
Ned & Anne Thanouser
John & Frances von Schlegell
Mr. & Mrs. Victor von Schlegell
Mr. Hugh Walker
Mrs. J.A. Warren
Dr. & Mrs. Tyrone Wei

West One Bank

Lynne Parise & Mark Williams
Dolores & C. Norman Winningstad
Allen & Rebecca Wirfs-Brock
Mr. & Mrs. Norman A. Workman
Dr. & Mrs. Masatoshi Yamanaka

Hall Street Club

\$500 to \$999

George Abel & Marci Lematta Abel
James & Jane Adams
Ken & Linda Barker
Keith & Sharon Barnes
Mr. & Mrs. Philip R. Bogue
Mr. & Mrs. William M. Brod
Mr. & Mrs. Ding Chan
Harry S. Chandler
Dan & Nancy Cook
Bill & Elaine Corwin
Campbell Groner & Nancy Cowgill
Kuniko de Weese
Lori Diaz
Ulla & John Drell
Mr. C.R. Duffie Jr.
Mr. Robert Durst
Woodruff English & Annie Terry
Peter & Nancy Fisher
Brad & Kami Fraley
Ted & Diane Freres
Kristine Gebbie
Amy & Steve Haessler
Mr. & Mrs. James M. Harder
Mr. & Mrs. Ken Harrison
Beverly Triplett Hawks
Michael & Suvira Heyn
Jim & Carol Hibbs
D.A. & Meredith Hilderbrand
Becky & Thomas Holder
David & Eileen Johnson
Clyte Speidel & Paul Keown
Don & Alice Kinzer
Jan & Chris Kitchel
Bob & Mary Laird
Wesley Lewis
Ms. Liza Lilley
Kevin & Mary Lin
Gil & Jackie Lipshutz
Alec & Laurie Macmillan
Michael & Catherine Malos
Beth Mason
Ms. Atsuko Matsuyama
May Dept. Stores Co. Foundation
Jack McCann Jr.
Merrill Lynch & Co.
Mr. & Mrs. William F. Meyer
Greg & Diane Morgan
Barbara Ports & Michael Moser
Mr. & Mrs. David M. Munro
Kenneth C. Murphy
Sandra Miles & Paul Norman
Northwestern Mutual Life
Harry J. O'Donnell, Jr.
Joe & Suzie Opsahl
Mr. & Mrs. Monford Orloff
Chavalit & Boksoon Pattamanuch
Hal & Helene Phillips
Terry & Mei-Lin Poon
Portland General Corporation
Patrick & Linda Radecki
Nancy S. & William W. Rosenfeld

OES FUND—GIVING SOCIETIES

Naveen & Naina Sachdev
John & Trudy Samples
Yujiro & Yoko Sawada
Mr. & Mrs. Howard W. Schleppe
Steven & Juliet Schlessner
Frances & Currin Snipes
Adrienne Souther
Dale & Carol Stewart
Mr. & Mrs. Yoshio Takanishi
Larry & Kim Teufel
Mrs. Richard C. Tevis
Stephen & Carole Thomas
Dr. Richard & Liz Thoresen
Mr. & Mrs. Peter B.B. Turney
Bernd & Petra Wahler
Dr. Hans J. & Gisela Walitzki
Mr. & Mrs. Frank M. Warren Sr.
James Waskey
Percy Webster
Mr. Ted Welsh
Morris & Paula Westlund
Mr. & Mrs. Charles L. Williams
Steve & Patty Williams
Tetsu & Masae Yamaguchi
Ian & Kazzie Young
Louisa & Harvey Zendt

Anniversary Rose Club \$300 to \$499

Bob & Kathleen Ames
Charles Bellville & Ellie L. Tatum
Sally C. Bjerklie
Mr. & Mrs. Dave Brooks
Michael & Cheryl Carrier
Wm. D. & B.L. Charpentier
Vince & Louise Corbin
Jack Durrett
Ron & Lynne Enyeart
Scott & Sarah Grewe
Charles & Gwen Hahn
Mrs. U.S. Harkson
Jeri & Sandy Haskins
Betty Lou Hatcher
Tom & Judi Henkle
Jim & Barbara Herbold
Dr. & Mrs. Robert Hill
Fred & Cinda Ing
Bud & B. Mary Inkster
John D. Karamanos
Chuck & Trish Kellogg
Doug Kezeor
Eberhard & Gerlinde Klasse
Lenore L. Klink
August & Malle Kollom
Mr. & Mrs. Suen-Kow Koo
Mr. & Mrs. Tsutomu Kyuzaki
Francis & Lucy Liu
Barbara F. Marontate
Sylvia & John Mathews
Karen L. Mefferd

Matthew Miller
Carol D. Myers
Frank & Kathryn Nance
Mrs. Margaret Hall Newbegin
Christopher & Mary Nogeire
Catherine Riffe & Tom Page
Peninsula Community Foundation
Johannes H. & Atsumi Polstra
Mr. Gary R. Pope
Sylvia Purnomo
Mark & Sandy Severson
Julie & Brett Sheppard
Michael & Elisabeth Swink
Dr. & Mrs. Edward E. Ward
Beth & Bob Warner
Mark & Leslie Workman

Founders' Club \$150 to \$299

Daryl & Carole Adamson
Hashim & Fatin Alsada
Ruth Hopper Ballin
Richard & Cindy Bamam
Mr. & Mrs. Roland F. Banks
Les Godowski & Ellen Beilstein
Robb & Pam Bell
Ken & Judith Bennington
Mr. John M. Berman
John R. Birmingham
Mr. William E. Bethards
Bob & Afton Beutler
Mr. & Mrs. Narjala Bhasker
Jim & Linda Blinkhorn
The Boeing Company
Yan & Natalya Borodovskiy
Mrs. Audra M. Braun
Debby & Terry Brown
Paul & Patricia Buescher
Cliff & Sally Canepa
Jon & Ellen Carder
Robert & Janice Cassidy
Ms. Charyl Cathey

Don & Brenda Chambers
Mr. & Mrs. Geoff Chew
Dr. & Mrs. Edgar Clark
Lee Diane Collins Vest
David Colton
Mrs. George W. Conklin
Mrs. Alexandra Dussin Cook
Laura Ann Cook
Mrs. Janet Mann Crawford
Mr. & Mrs. F.N. Creakman
Gary & Laurie Crossman
Cristin Babcock & Eric Cullander
Beverly Hein Culp
Mr. P. Beresford Daigle
Janet Maurer & Bill Davenport
Ms. Barbara Davis
Geoffrey & Phyllis Davis
Ms. Hannah Davis
Ted & Jo de Bruin
Harold & Merry Demarest
Chris & Cindi Devich
Linda & Nate Dickinson
Margaret L. Dietrich
Jerry & Patti Doble
Ms. Barbara Durrett
Mr. & Mrs. Franklin O. Dyer
Vivian & Timm Edell
Jane Edwards
Michael & Melissa Eshelman
Donald & Jana Evans
Matt, Diane, Maddie & Jake Evans
Philip Allen & Babette Faris
David & Kendra Farris
Dr. Robert & Kristina Fields
Carol F. Floten
Flowerree Foundation
Eric & Jan Friedman
Vicki DeVito & Craig Fuller
Mrs. Michael & Barbara Gaines
John & Katie Garvie
Paul & Sarah Gary
John & Donna Ghorso
Mr. & Mrs. Dwaine E. Gipe

Richard & Barbara Glick
Stuart & Gail Goossen
Tom & Joyce Gordon
Alex & Karen Grauert
Mrs. Diana Barnard Gray
Mrs. Joan Irwin Green
Patricia Green
Bob & Suzanne Greenberg
Clarence & Myrtle Rae Greenwood
Kent & JoAnne Grewe
Mr. & Mrs. Robert E. Grissom
Robert & Jennifer Groves
Mr. Edward B. Haessler
Patricia B. Hamilton
Brian & Janice Harwood
Nikki C. Hatton
Betty Hedberg
Delbert & Rosa Hemphill
Sandra & David Herman
William & Flora Hewlett Foundation
Charmian Kolar Hilleary
Gregg & Cindy Hoffman
Mrs. J. Irwin Hoffman
Mrs. M.B. Hoffman
Mr. & Mrs. Robert A. Holmstrom
Lyll & Vicki Howell
Hoi & Yen Huynh
Keith & Myrna Lcombe
Virginia Insley
Dr. & Mrs. Harvard E. Isaak
Marion & Gordon Janney
Karen & Ken Janoff
Pat & Judy Jensen
Mr. & Mrs. Hans Jensfelt
Jewett, Barton, Leavy & Kern
Ms. Elizabeth Johnson
Katherine Karafotias
Klaus & Sharleen Kleber
Paul & Patti Knollman
Susan Krohn Koe
Drs. Judith Sobel & Gregory Koski
John & Helen Kowolik
Molly Clair Krausse
Mrs. Joseph A. Labadie
Jeanette & David Larson
Joan L. Lasselle
Mr. Duane Laun
Thuyet Luu & Hoai Le
Drs. Fernando & Dolores Leon
Mr. Irving Levin
Nathan & Penny Levin
M.R. & Mildred Lillpop
Warren Hirsch & Kate Loggan
Robert W. & Kathleen M. Love
Brian & Lisa Marsh
Mr. Jeff Marsh
Martha Randall Mason
Bill & Tina McBride
Linita M. McDonald
Cindy Knowles & Hollis McMillan
Miles & Libby Merwin
Richard Mathews & Cheryl Meyers
Daisy Housel-Miller & Ted Miller
Mr. Max M. Miller Jr.
Michele Minetti
Michael & Dana Morasch
Chris & Linda Morgan
Frances Morgan



▲ Beth Warner and the 1995-96 OES FUND Give & Grow mascot, the sunflower.

John & Lynne Morrison
 Chuck & Linda Morrow
 Mrs. A.M. Naab
 Harry & Yaeko Namba
 Natalie Giustina Newlove
 Kenneth B. Noack Jr.
 Fr. Steve & Sandy Norcross
 Sara-Jane Henderson Norwood
 Jack & Jan Ohman
 Stephen & Linda Olson
 Chet & Wendy Orloff
 Dr. & Mrs. Gary Ostenson
 Steve & Debi Owen
 Philip & Lynne Papworth
 Jerry & Kathy Pate
 Betty Barr Patrick
 Faye E. Pepin
 Mark & Rosanne Perry
 Mike & Janet Phillips
 Zelda Platt
 Don Johnson & Robin Pope
 Frank & Carol Powers
 PPG Industries Foundation
 Terry & Jim Putnam
 Karin Randall
 David & Suzanne Regan
 Charles & Christina Reynolds
 Mr. Roland Reynolds
 Harvey & Miriam Rogers
 Hiroshi & Masami Saitoh
 Loree & Ken Sakai
 Mr. & Mrs. William Sakai
 Richard W. & Mary W. Sapp
 Michael Schaeffer
 Pamela Schaeffer
 Paul & Fern Schlesinger
 Mary & Jack Schunk
 Miles & Patsy Seeley
 Roberta & Fred Shaeffer
 Dr. Brian Shaffer &
 Tina Stanley Shaffer
 Joel & Sandra Shilling
 Alice Simpson
 Paul & Linda Smith
 Don & Joy Solberg
 Mr. & Mrs. Edmund Stevens
 Pam Vohnson & David Streight
 Todd & Carrie Stucky
 Mrs. Palmer Swanson
 Lee Thornton
 Dr. & Mrs. Matti Totonchy
 Michelle & Peter Trumbo
 Glenn & Barbara Vanselow
 J. Davis & Gwen Walker
 Alice Freeze Warner &
 John R. Warner
 Darrell Clukey & Sherrill Whittemore
 Diedre Cain & Tom Wilson
 Nancy Greene & David Wilson
 Bob & Jane Winger
 Dennis & Patricia Winningstad
 Richard & Jo Ellen Winningstad
 Arlene & Woody Wittmayer
 Jeff & Lynn Wolfstone
 Woodburn, Postlewaite &
 Landers, CPAs
 Dr. & Mrs. Steven Zack
 Mr. & Mrs. William Zobrist

OES BOARD OF TRUSTEE GIVING TO THE OES FUND

The Rt. Rev. Robert L. Ladehoff,
Chairman
 John von Schlegell,
President
 Sheryl Acheson,
Vice President
 Wayne Drinkward,
Treasurer

Richard C. Alexander
 Marty Brantley
 The Very Rev. C. Roy Coulter
 Harriett Dixon
 Robert Durst
 Betty Hedberg
 Lucy L. Houser
 Chris Kitchel
 Sean Kuni '81
 Elisabeth Lyon
 Robert P. Morrison
 David M. Munro
 Stephen Norcross
 Chet Orloff
 John B. Spring
 Dale Stewart
 Anne Thanhouser
 Ted "Splinter" Wrenn
 Peter Bechen,
Chair, Pacific Rim Council
 Peter W. Stevens,
Headmaster
 Jack McCann Jr. '84,
President, Alumni Association

CURRENT OES PARENT GIVING TO THE OES FUND

Under the leadership of Julie Drinkward and Beth Warner, the OES FUND Grade Chairs raised a record \$221,960 from parents for the OES FUND. Thank you to all of our parent volunteers for their hard work and dedication to the School!

Grade Chairs

Sharon Barnes,
Pre-Kindergarten
 Laurie Turney,
Kindergarten
 Karen Grauert,
Primary
 Kami Fraley,
First Grade
 Currin Snipes,
Second Grade
 Anne Thanhouser,
Third Grade
 Kathleen Ames,
Fourth Grade
 Jana & Richard Westlund,
Fifth Grade
 Leslie Workman,
Sixth Grade
 Tatiana Moller-Lawson,
Seventh Grade

Jackie & Gil Lipshutz,
Eighth Grade
 Patti & Paul Knollman,
Ninth Grade
 Miriam Rogers, *Tenth Grade*
 Laurie Crossman, *Eleventh Grade*
 Susan Russell, *Twelfth Grade*

Lower School

Pre-Kindergarten 83.3%
 Keith & Sharon Barnes
 Kate Birmingham
 Mr. & Mrs. Narjala Bhasker
 Jim & Linda Blinkhorn
 Kay & Marty Brantley
 Steve & Tina Donovan
 Michael & Melissa Eshelman
 Matt & Diane Evans
 Brad & Kami Fraley
 Drs. Judith Sobel & Gregory Koski
 Kenneth & Deborah Marsh
 Bill & Tina McBride
 Steven & Anita Mitchell
 Ingolf & Peggy Noto
 Terry & Jim Putnam
 Barbara Robins
 Dr. Brian Shaffer &
 Tina Stanley Shaffer
 William H. Tracey
 Steve & Mary Warinner
 Louisa & Harvey Zendt

Kindergarten 82.4%

Jonathan & Bonnie Barg
 Les Godowski & Ellen Beilstein
 Charles Bellville & Ellie L. Tatum
 Tom McGuirk & Cammie Brim
 Cliff & Sally Canepa
 Don & Brenda Chambers
 Richard & Nancy Chapman
 David Colton
 Rich & Leah Davidson
 Steve & Tina Donovan
 Clarice Johnston & Tina Enberg
 Peter & Nancy Fisher
 Tom & Joyce Gordon
 Amy & Steve Haessler
 Charles & Gwen Hahn
 Mary McDonald-Lewis &
 David Hassin
 Mary Michael & Kohel Haver
 Fritz & Maggie Hayes
 Lyall & Vicki Howell
 Mr. Robert Johnson
 Leslie S. Johnson
 Cameron Johnson
 Curtis & Mariann Koop
 Deborah Garvey & David Kruss
 Karen & Craig McClure
 Matthew Miller
 John & Lynne Morrison
 Chuck & Linda Morrow
 Michael W. Nicholls
 Catherine Riffe & Tom Page
 Carol Ward & John Pedisich
 Debra Platt
 Jeff & Kathryn Rippey
 Loree & Ken Sakai
 Robert & Jill Scheer
 Steven & Juliet Schlessler
 Phil VanderWeele & Joan Snyder



▲ Trustees and parents Chris Kitchel and Harriett Dixon, at the Major Benefactors reception in May.

OES FUND—GIVING BY AFFILIATION



▲ Parents Kathleen and Bob Ames enjoy the festivities at the Major Benefactors Reception. Kathleen served as an OES FUND volunteer for the Give & Grow campaign.

Ray and Mary Streinz
Michelle & Peter Trumbo
Mr. & Mrs. Peter B.B. Turney
Milton Kokubun & Wen-Lin Wang
Dr. & Mrs. Tyrone Wei
Nancy Greene & David Wilson
Joanne Kahn & Peter Wolochow

Primary Class 86.7%

Ravi & Sunanda Agarwal
Philip Allen & Babette Faris
Alex & Karen Grauert
Sandra & David Herman
Dr. & Mrs. Robert Hill
Gary & Ericka Hoffman
Cindy Knowles & Hollis McMillan
Mark & Sandy Severson
Majid & Soufi Shayegh
Julie & Brett Sheppard
Kent Wadsworth
Bernd & Petra Wahler
Steve & Patty Williams
Jeff & Lynn Wolfstone

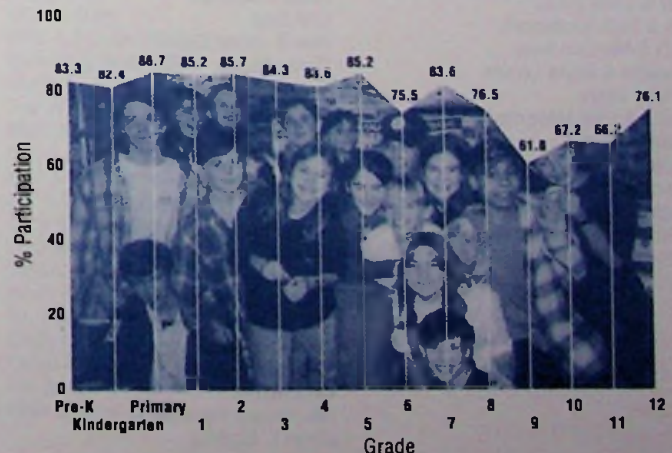
1st Grade 85.2%

Robb & Pam Bell
Kay & Marty Brantley
Annemarie Carlson
Robert & Janice Cassidy
John & Deborah Chessar
Grace Tam & Kevin Cheung
Christine R. Cooper
Campbell Groner & Nancy Cowgill
Chris & Cindi Devich
Wayne & Julie Drinkward
Dr. & Mrs. Steven Eyler
Dr. Robert & Kristina Fields
Brad & Kami Fraley
Dan & Linda Gipe
Scott & Sarah Grewe

Kent & JoAnne Grewe
Robert & Jennifer Groves
Jeri & Sandy Haskins
Jim & Carol Hibbs
Curt & Theresa Hineline
Jill & John Inskeep
Karen & Ken Janoff
Deborah Garvey & David Kruss
Mr. Sean Kuni
Ms. Paige Parker Kuni
Ed & Margaret Kushner
Mark Loder
Mr. Rein Magi
Mai-Lill Magi
Brian & Lisa Marsh
Beth Mason
Greg & Katherine McCoy
Leslie Mackenzie & Mickey Morey
John & Lynne Morrison
Chuck & Linda Morrow
Barbara Ports & Michael Moser
Paul & Mary Oldshue
Eric & Sarah Geary Ottem
Kirk & Jill Parker
Mike & Robin McArthur-Phillips
Chris & Kelley Platt
Terry & Jim Putnam
Lee C. Olsen & David H. Ross
Loree & Ken Sakai
Robert & Jill Scheer
Miles & Patsy Seeley
Mike & Janice Shainsky
Mr. & Mrs. Jonathan N. Spitz
Todd & Carrie Stucky
Mr. & Mrs. Robert S. Sweeney
Larry & Kim Teufel
Sohrab & Haleh Vossoughi
Mr. Ted Welsh
Mr. & Mrs. Charles L. Williams
Steve & Patty Williams
Dr. & Mrs. Steven Zack

2nd Grade	85.7%	3rd Grade	84.3%
Daryl & Carole Adamson		James & Jane Adams	
Keith & Sharon Barnes		Peter & Nora Auseklis	
Jon & Barbara von Behren		James & Beverly Bow	
Bill & Elizabeth Belgard		Cristin Babcock & Eric Cullander	
Jim & Linda Blinkhorn		Dr. Robert & Kristina Fields	
Richard & Nancy Chapman		Diane & Jim Flack	
Janet Maurer & Bill Davenport		Vicki DeVito & Craig Fuller	
Ulla & John Drell		Amy & Steve Haessler	
David & Kendra Farris		Brian & Janice Harwood	
Fernanda D'Agostino & Brian Foulkes		Fritz & Maggie Hayes	
Paul & Sarah Gary		Henry & Sharon Hewitt	
Ms. Mona Goode		Becky & Thomas Holder	
Steve & Kathryn Goodenough		Karen & Ken Janoff	
Charles & Gwen Hahn		Ed & Margaret Kushner	
Kris & Karen Van Hatcher		Terry & Wendy Lane	
Mary Michael & Kohel Haver		Tatiana Moller-Lawson	
Gary & Ericka Hoffman		C. Allen & Sherry Logan	
Drs. Judith Sobel & Gregory Koski		Mai-Lill Magi	
Tatiana Moller-Lawson		Mr. Rein Magi	
John & Priscilla Longfield		Brian & Lisa Marsh	
Alec & Laurie Macmillan		Ms. Atsuko Matsuyama	
Michael & Catherine Malos		Cindy Knowles & Hollis McMillan	
Kenneth & Deborah Marsh		Daisy Housel-Miller & Ted Miller	
Jack & Jan Ohman		Leslie Mackenzie & Mickey Morey	
Lon & Marcia Peters		Greg & Diane Morgan	
Hai & Helene Phillips		Barbara Ports & Michael Moser	
Friderike Heuer & Daniel Reisberg		David & Penny Olien	
Jeff & Kathryn Rippey		Joe & Suzie Opsahl	
Mr. & Mrs. James Sassalos		Philip & Lynne Papworth	
John & Frances von Schlegell		Ms. Thea Rhiannon	
Frances & Currian Snipes		Drs. Joe & Margaret Robertson	
Wayne & Diane Somers		Barbara Robins	
Ernie & Erika Staley		Tom & Susan Robinson	
Mr. & Mrs. Robert S. Sweeney		Naveen & Naina Sachdev	
David & Nancy TenHuizen		John & Trudy Samples	
Ned & Anne Thanouser		Mary & Jack Schunk	
Ms. Elizabeth A. Trainor		Ray and Mary Streinz	
Martha & Mark Warrington		Todd & Carrie Stucky	
Morris & Paula Westlund		Ned & Anne Thanouser	
Ms. Carla Wilson		Mr. & Mrs. Peter B.B. Turney	
Nancy Greene & David Wilson		Bernd & Petra Wahler	
Diedre Cain & Tom Wilson		Dr. Hans J. & Gisela Walitzki	
Joanne Kahn & Peter Wolochow		Robert & Stephanie Wight	
Mark & Leslie Workman		Louisa & Harvey Zendt	

1995-96 OES Fund Parent Giving





▲ Tina and Steve Donovan visit with trustee and former parent Jack Spring at the Major Benefactors reception.

Nikki C. Hatton
 Fritz & Maggie Hayes
 Hoi & Yen Huynh
 Keith & Myrna Icombe
 Dick & Mary Jaffe
 Michael & Darlene Kaempt
 Jan & Chris Kitchel
 Wally & Cathy Krieger
 Robert W. & Kathleen M. Love
 David & Jacquie Lukens
 Elisabeth & Peter Lyon
 Ralph & Susan Nelson
 Scott & Sue Nicol
 Paul & Mary Oldshue
 Lon & Marcia Peters
 Frank & Carol Powers
 Maty & Nasrin Rahatzad
 Pam Waldman & Dan Rosenhouse
 John & Trudy Samples
 David & Judy Schiff
 Mr. & Mrs. Edmund Stevens
 Dr. Richard & Liz Thoresen
 Diedre Cain & Tom Wilson
 Mark & Leslie Workman
 Ian & Kazzie Young

7th Grade 83.6%

Bob & Kathleen Ames
 Mr. William A. Aslaksen
 Mr. & Mrs. Jean D. Brault
 Corbet & Myra Clark
 Dennis & Gayle Collins
 Cristin Babcock & Eric Cullander
 Wayne & Julie Drinkward
 Donald & Jana Evans
 Vicki DeVito & Craig Fuller
 Alex & Karen Grauert
 Clarence & Myrtle Rae Greenwood
 Ms. Cynthia Hayakawa
 Delbert & Rosa Hemphill
 Tom & Judi Henkle
 Henry & Sharon Hewitt
 Ginger Iles
 Randy & Jeane Iles
 Pat & Judy Jensen
 David & Eileen Johnson
 Drs. Robert & Mary Catherine King
 Don & Alice Kinzer
 Jan & Chris Kitchel
 Klaus & Sharleen Kleber
 Jeanette & David Larson
 Tatiana Moller-Lawson
 Wesley Lewis
 Robert & Abigail Marshall
 Sarah McNary
 Daisy Housel-Miller & Ted Miller
 Christopher & Mary Nogeire
 Hal & Helene Phillips
 Jennifer Doncan-Pitlock & Geoffrey Pitluck
 Patrick & Linda Radecki
 David & Suzanne Regan
 Tom & Susan Robinson
 Harvey & Miriam Rogers
 Ilene Safyan & Mark Rosenberg
 Mr. & Mrs. Richard L. Sadler

4th Grade 83.6%

Bob & Kathleen Ames
 Richard & Cindy Bambam
 Yan & Natalya Borodovsky
 Kay & Marty Brantley
 Joe & Sharon Cade
 Robert & Janice Cassidy
 Richard & Nancy Chapman
 Corbet & Myra Clark
 Christine R. Cooper
 Vince & Louise Corbin
 John & Anne Coulter
 Janet Maurer & Bill Davenport
 Rocky Dixon
 Ms. Harriett Dixon
 Ms. Barbara Durrett
 Jack Durrett
 David & Kendra Farris
 Jerry & Sally Fish
 Mindy Gavette
 Tom & Joyce Gordon
 Bob & Suzanne Greenberg
 Bob & Kelly Hale
 Jim & Carol Hibbs
 Pat & Sam Karamanos
 Curt & Mariann Koop
 Jeanette & David Larson
 Wesley Lewis
 Alec & Laurie Macmillan
 Matthew Miller
 Chris & Linda Morgan
 Kenneth E. Murphy
 Frank & Kathryn Nance
 Julie Neupert & Peter Stott
 Catherine Riffe & Tom Page

Faye E. Pepin
 Mark & Rosanne Perry
 Lee C. Olsen & David H. Ross
 Naveen & Naina Sachdev
 Loree & Ken Sakai
 Michael Schaeffer
 Pamela Schaeffer
 Mark & Sandy Severson
 Carla A. Sosanya
 Drs. Jeff & Kathy Sunshine
 Ms. Carla Wilson
 Dennis & Patricia Winningstad
 Jeff & Lynn Wolfstone
 Dr. & Mrs. Masatoshi Yamanaka

5th Grade 85.2%

Hashim & Fatin Alsada
 Drs. Ezra & Farhat Azhar
 Jon & Barbara von Behren
 Karen Fast & Robert Bennett
 Mr. & Mrs. Jean D. Brault
 Sandra Cade
 Michael & Cheryl Carrier
 Robert Dahmen
 Lori Diaz
 Ron & Lynne Enyeart
 Susan Thayer & Paul R. Farago
 Grant & Mary Ellen Farr
 Raymond & Micheline Ghattas
 John & Donna Ghiorso
 Stuart & Gail Goossen
 Alex & Karen Grauert
 Jeri & Sandy Haskins
 Kris & Karen Van Hatcher
 Pat & Sam Karamanos
 Chuck & Trish Kellogg
 Tatiana Moller-Lawson
 Warren Hirsch & Kate Loggan
 John & Priscilla Longfield
 Elisabeth & Peter Lyon
 Beth Mason
 Ms. Atsuko Matsuyama
 Karen L. Mefferd

PJ Sears-Million
 Greg & Diane Morgan
 Julie Frantz & Craig Murphy
 Sandra Miles & Paul Norman
 Joe & Suzie Opsahl
 Steve & Debi Owen
 Chris & Kelley Platt
 Charles & Christina Reynolds
 Drs. Joe & Margaret Robertson
 Ilene Safyan & Mark Rosenberg
 Hiroshi & Masami Saitoh
 John & Frances von Schlegell
 Ernie & Erika Staley
 Ned & Anne Thanouser
 Dr. & Mrs. Matti Totonchy
 Mr. & Mrs. Peter B.B. Turney
 Dr. Hans J. & Gisela Walitzki
 Dr. Richard & Jana Westlund
 Dr. & Mrs. Steven Zack
 Louisa & Harvey Zendt

Middle School

6th Grade 75.5%

James & Jane Adams
 Ken & Linda Barker
 Allen & Rebecca Wirts-Brock
 Mr. & Mrs. Ding Chan
 John & Anne Coulter
 Gary & Laurie Crossman
 Bryan & Lisa Cullivan
 David & Mary Davis
 Lori Diaz
 Linda & Nate Dickinson
 Ms. Harriett Dixon
 Rocky Dixon
 Dr. & Mrs. Steven Eyer
 Jerry & Sally Fish
 Carol F. Floten
 Eric & Jan Friedman
 Richard & Barbara Glick

Mr. & Mrs. James Sassalos
 Mary & Jack Schunk
 Jay & Jill South
 Drs. Jeff & Kathy Sunshine
 Ned & Anne Thanouser
 Martha & Mark Warrington
 Dr. Richard & Jana Westlund
 Paul H. & Diane F. Whitney

8th Grade 76.5%

Christopher & Sheryl Acheson
 Richard C. & Carilyn M. Alexander
 Randee Ayres
 Allen & Rebecca Wirfs-Brock
 Ms. Jeannette Brown
 Joe & Sharon Cade
 Lan Lu & Tom Chou
 Nancy Dunn
 Woodruff English & Annie Terry
 Raymond & Micheline Ghattas
 Ken & Susan Greenbaum
 John & Bonnie Gregory
 Molly & Chip Harris
 Tom & Janice Huseby
 Ms. Peigi Huseby
 Michael & Darlene Kaempff
 Clyde Speidel & Paul Keown
 Eberhard & Gerlinde Klasse
 Gil & Jackie Lipshutz
 Ms. Jane Massey
 Mrs. Diane Meade
 Matthew Miller
 Carol Ward & John Pedisich
 Jim & LouAnn Pickering
 Johannes H. & Atsumi Polstra
 Terry & Mei-Lin Poon
 Maty & Nasrin Rahatzad
 Charles & Christina Reynolds
 Joel & Sandra Shilling
 Steve & Virginia Slater
 Gerhard & Susanne Sonnde
 Jay & Jill South
 Bob & Helen Spiker
 Dr. & Mrs. Matti Totonchy
 Mr. Martin Vlach
 Dr. & Mrs. Edward E. Ward
 James Waskey
 Dr. Richard & Jana Westlund
 Richard & Jo Ellen Winningstad
 Dennis & Patricia Winningstad
 Mark & Leslie Workman

Upper School

9th Grade 68.1%

Gretchen Amann
 Richard & Cindy Bambam
 Ken & Linda Barker
 David & Betsey Blessing
 Ms. Deborah Brewer
 Walter R. & Kathleen T. Buhl
 Heidi Chandler
 Harry S. Chandler
 Mary & Peter Davidson
 Jay & Linda Enloe
 Richard & Karen Fink
 Mr. Scot C. Fisher
 Mr. & Mrs. Richard Graves
 Tom & Judi Henkle
 Dr. & Mrs. Wren Huggins
 Hoi & Yen Huynh
 Randy & Jeane Iles
 Ginger Iles
 Dr. & Mrs. Mehmet Inan
 Fred & Cinda Ing
 Mr. & Mrs. Heon-Shig Kang
 Morton & Susan Kelsey
 Mr. & Mrs. Joong Heon Kim
 Paul & Patti Knollman
 Shelly Knowlton
 Bob & Mary Laird
 Thuyet Luu & Hoai Le
 Mr. & Mrs. Masahisa Masuda
 Tom & Karen McClung
 Miles & Libby Merwin
 Mutune Mungai & Muthoni Mugo
 Paul & Jean Patsis
 Chavalit & Boksoon Pattamanuch
 Karin Randall
 Dr. Consuelo & Robert Romanski
 Richard W. & Mary W. Sapp
 Jack & Pat Semura
 Chuck & Tish Shepard
 Shinzaburo & Keiko Shigematsu
 Mr. & Mrs. Chai Sophonpanich
 Adrienne Souther
 Jim & Libby Spencer
 Drs. Jeff & Kathy Sunshine
 David & Terry Taylor
 Glenn & Barbara Vanselow
 Thomas R. Voll
 Bernd & Petra Wahler
 Eric & Annie Walsh
 Ms. Pam Wilcox
 Carl Wilcox
 Ms. Maria Williams

10th Grade 67.2%

Bill & Francie Anton
 Bob & Afton Beutler
 Debby & Terry Brown
 Joe & Sharon Cade
 Wm. D. & B.L. Charpentier
 Bill & Elaine Corwin
 Katherine Criswell
 Mr. William R. Darden
 Linda & Nate Dickinson
 Jerry & Patti Doblle
 Mr. & Mrs. Carl Dubose
 Norman & Sharon Eder

Richard & Barbara Glick
 Mrs. Florence Hedlund
 D.A. & Meredith Hilderbrand
 Ms. Peigi Huseby
 Tom & Janice Huseby
 Peter & Jan Jacobsen
 Dr. & Mrs. William Lamb
 Mr. Irving Levin
 Mr. & Mrs. Surapon Lisahapanya
 Eric & Joan Lowe
 Pam & Bob Matheson
 Mr. & Mrs. A.J. McCann
 Richard Mathews & Cheryl Meyers
 Michele Minetti
 Christopher & Mary Nogeire
 Chet & Wendy Orloff
 Jonathan & Shunwan Pease
 Lawrence & Illene Pevec
 Sue & Larry Rein
 Harvey & Miriam Rogers
 Mr. & Mrs. Richard L. Sadler
 Mary & Jack Schunk
 David & Suzette Shoulders
 Bernie & Carrie Silvernail
 Gerhard & Susanne Sonnde
 Dr. & Mrs. P.S. Spencer
 Taparat Boonthanaik & Veerayuth Suppipat
 James Waskey
 Ray & Judy Webber
 Doug & Gwen Whitmore
 Mary Burgess & Thomas Willing
 Jonathan & Pearl Yu
 Ted & Mary Lou Ziegler

11th Grade 66.2%

Mr. Ethan Becker
 Joan W. Becker
 Debby & Terry Brown
 Ted & Jo de Bruin
 Linda Carroll-Barraud
 Mr. & Mrs. Chieh-Hung & Chou Mei-Lin Chiang
 Mr. Warren Clark
 Vicki Clark
 Gary & Laurie Crossman
 Wayne & Julie Drinkward
 Vivian & Timm Edell
 Lou & Marna Elliott
 Woodruff English & Annie Terry
 Harold Gray
 Kathryn Gray
 John & Bonnie Gregory
 Michael & Suvira Heyn
 Gregg & Cindy Hoffman
 Drs. Witold & Malgorzata Jeske
 Mary & Al Rollins Jr.
 Don & Alice Kinzer
 Paul & Lynnsly Kollar
 Mr. & Mrs. Suen-Kow Koo
 John & Helen Kowolik
 Elizabeth A. Leach
 Nathan & Penny Levin
 Kevin & Mary Lin
 Dr. & Mrs. Young So Moc
 Cindy Mooney
 Loren & Dina Morse
 Hal & Helene Phillips
 Mike & Janet Phillips

Jim & LouAnn Pickering
 Chris & Betsy Pope
 David & Judy Schiff
 Ms. Jeanne D. Smith
 Mr. & Mrs. Chai Sophonpanich
 Carla A. Sosanya
 Dale & Carol Stewart
 Dr. & Mrs. Matti Totonchy
 Beth & Bob Warner
 Nely Johnson & David Wilson
 Ms. Lynda Winningstad
 Arlene & Woody Wittmayer

12th Grade 76.1%

Mr. John M. Berman
 James & Diane Bickford
 Ms. Deborah Brewer
 Geoffrey & Phyllis Davis
 Ms. Hannah Davis
 Larry & Mary Feltz
 Patricia Green
 Michael & Alice Greene
 Keith & Catherine Hoelscher
 Hoi & Yen Huynh
 Dr. & Mrs. William Lamb
 Francis & Lucy Liu
 Mrs. Michiko Miyazaki
 Loren & Dina Morse
 Stephen & Linda Olson
 Peter & Terry Osborne
 Sondra J. Price
 Sylvia Purnomo
 Patrick & Linda Radecki
 Ms. Mary Kline Rose
 Susan & Scott Russell
 Yujiro & Yoko Sawada
 Rick Seifert
 Steve & Virginia Slater
 Paul & Linda Smith
 Don & Joy Solberg
 Dale & Carol Stewart
 Brigitte Stout
 Michael & Elisabeth Swink
 Mr. & Mrs. Yoshio Takamishi
 Steve & Meri Taylor
 Mr. & Mrs. Wei-chen Teng
 Ray & Judy Webber
 David & Janice Weitzer
 Kenneth & Ann White
 Tetsu & Masae Yamaguchi
 Louisa & Harvey Zendt

ALUMNI

St. Helens Hall

1920

Doris Henningsen Harkson

1926

Helen Betsy Abbott
Betty Allyn May
Margaret Hall Newbegin

1928

Beth Ann Johnson Damuth
Marjory H. Day

1929

Virginia Insley
Ardeane Henningsen Wright

1930

Elizabeth O'Reilly Barstow
Muriel Gabriel Heltzel
Lela Blanche Coe Meyer
Helen Malarky Thompson

1931

Mary Beckwith Hoffman
Rhoda Holman Statter

1932

Elyse West Clark
Evelyn Zehntbauer Lundgren
Jane H. Campbell Munly
Sara-Jane Henderson Norwood

1933

Rebecca H. Alexander
Betty Barr Patrick
Doreen Plympton Strong
Frances Watzek Warren

1934

Esther Jobes Holmes
Elizabeth Watkins Jorgensen
Elizabeth Pownall Swindells
Ruth A'Court Simmonds Tunturi

1935

Jane Mount Ammerman
Lillian Brooke Austin
Anita Cadonau Birkland
Geraldine Hanny Sargent

1936

Margaret Newhall Dietrich
Georgia Littlepage Goudie
Alice Freeze Warner

1937

Jean Groves Bullwinkle
Janet Mann Crawford
Nancy Stolte Rosenfeld

1938

Ruth Hopper Ballin

1939

Sue Lake Howell

1940

Marjorie Besson Fintz

1941

Jean Morrison Corrigan
Katherine J. Henshaw
Mary Sumner Jackson
Alice K. Trewhella
Jenelyn Gaston Wessler
Rhoda Thurm Zobrist

1942

Margaret Saari Dether
Charmian Kolar Hilleary

1943

Mary Serruys Alfonte
Sylvia A. Boydston
Jean A. Kalahan

1944

Betsy Parker Belles
Joan Irwin Green
Patricia B. Hamilton
Jean Irwin Hoffman
Gloria Jokstad Jones
Nadine H. Wilhelm

1945

Patricia Walker Ackerman
Mary N. Balzhiser
Roberta Wollum Hall
Chiane Gerow Kathrens
Molly Clair Krausse
Susan Teague Lake

1946

Donna Dustin Courtney
Barbara F. Marontate
Fiorene Inglis Miller

1948

Shirley Barton
Priscilla Ann Adams
Mary Orr Edson
Delight Kolar Leonard

1949

Bhradde Eversaul Collins
Gloria Spencer Crowson
Bonnie Dunbar Hahn
Barbara Jean Hinman
Betty Charlton Labadie
Amaryllis Lilles Powell

1950

Nancy Salt Black
Diane Dawson Schulz

1951

Caroline Kuhn Meehan
June Dunbar Phillips
Floy Louise vonGroenewald Senior

1952

Garland Sorenson Lewis
Paula Barner Smith

1953

Barbara Ashley Phillips
Cynthia Coats Railton

1954

Diana Barnard Gray

1955

Marietta Kuykendall
Sylvia Rawlinson Mathews
Jemi Cain Rieg
Virginia Euwer Wolff

1956

Susan Dodge Moore

1957

Norma Fisher Atkins
Yvonne Lambert LeBarre
Nancy Morris Feldman
Karen Goodman
Margaret Lopic
Janice Reinmiller
Jill Stanford Warren

1958

Amy Fields
Nancy Walden Larsen

1959

Alice Harrington Davino
Martha Boyer Murphy
Meridel Prideaux

1960

Carol Pope Carney

1961

Sally C. Bjerklie
Mary Jane Dobson
Jacey Schwen

1962

Merrily P. Hansen

1963

Judy H. Becker
Nan Butler Perrott

1964

Joan L. Lasselle

1965

Laura Shaeffer Belding
Nancy Bishop Dietrich
Natalie Giustina Newlove

1966

Sheila Maley Bates
Kimberly Moyer Beck
Diana Beebe Buchanan
Katherine Karafotias
Antonette M. Lehman
Elizabeth Marsh
Carolyn Morris Matney
Holly Pittman
Robin Schader

1967

Lee Diane Collins Vest
Rebecca Reynolds

1968

Leslie Stevenson Campbell
Janis Grout
Carol Gillies Handke
Linda Thomas Hendrickson
Nora Brydges McMillan
Susan Crenshaw Proudfoot
Barbara Pond Scott

1969

Elizabeth Johnson

1970

Alexandra Dussin Cook
Nancy Purdy Letson
Sandra Storey Paine

1971

Deborah Allen Brown
Marjorie Anderson Cesolini
Karin Randall

1972

Melanie Poss
Carrie K. Sammons

St. Helens Hall Junior College

1934

Flora Fetz Roholt

1935

Lenore Lavanture Klink
Elizabeth Little

1936

Jane Edwards
Virginia P. Imhof
Phoebe J. Catton Misner
Lois Nordean Raffety
Patricia Roberts
Doris Lincoln Trepp

1937

Lois Sylvester Ingala
Margaret L. Norris
Virginia E. Thorsen

1938

Anita Cadonau Birkland
Margaret Newhall Dietrich
Guin Hall
Darlene Harris Jones
Greta Matzen Morley
Alice Freeze Warner

1939

Yasuko T. Fukano
Anne Jones Taggard

1940

Mary Wintler Gregory
Martha Randall Mason
Frances Robertson Miescher

1941

Mary Bedwell Bothwell
Audra M. Braun
Mary Butler Bright
Helen Richards Schafer

1942

Maryanna Eckman Hatch

1943

Elia L. Bubenik
Dorothea Guynup
Rhoda Thurm Zobrist

1945

June Richards Enevoldsen
Beverly Triplett Hawks
Katherine Joslin Jones

1947

Beverly Hein Culp
Gloria Flaherty
Catherine Owens George
Jean Ehlen Morrison
May Zakoji Sakai

1948

Patricia Kendall Apperson
Doree Keller

Bishop Dagwell Hall

1967

Bill Marshall
Timothy G. Wallace

1968

Richard Mackey
Nicholas Peachy

1969

Bob Marcy
Harry J. O'Donnell, Jr.
Charles Reynolds
Richard Westlund
Mark Workman

1970

Alan Dappen
Ken Sakai
Paul R. Schlesinger

1971

C.R. Duffie Jr.
Edward B. Haessler

1972

Stephen Cuffel

Oregon Episcopal School

1973

Martha Bullwinkle Dorrell
Drew Erensel
Jeffrey C. Honeyman
Sally James
James Mosher
Kenneth B. Noack Jr.
Joseph Schafer

1974

Autumn Alexander-Skeen
Brent Erensel
Tanja Vasiljevic Horvat
Liza Lilley
Max M. Miller Jr.
Tamara Hughes Musser
Karen Noack Ratcliff
Osa M.A. Schultz
John A. Wysham

1975

Jean Duffie Benedict
Margaret Rogers Furlong
Barbara Bolton Hopewell
Ellen Kuzlik
Morris Westlund
Nancy Woodworth Young

1976

Phil Janney
Janelle Jimerson
Edmund Stevens
Rick Zurow

1977

Meg F. Bishop
Becky Gilmore Hanenkrat
Tracy delValle Reimers
Susanna Dant Soper
Nancy Townsend Janney

1978

Geoff Chew
Doug Kezeor
Susan Krohn Koe

1979

Norma J. Dulin
Maggie Groening

1980

P. Beresford Daigle
Russell M. Janney
Ashley Kirkman
Brenda Graves Wiens

1981

Helen Achilles Andrews
Anna Lisa Fear
Drue Ferguson
Sean Kuni
Michelle Fromm Massie

1982

Christine Menefee
Sarah Geary Ottem

1983

Christian Boatsman
Laurie A. Brady
Jon A. Grodem
Jennifer Kirkman

1984

Marci Lematta Abel
Scott Doenecke
Deirdre Dobbins Harrington
Thom Hayes
Paige Parker Kuni
Duane Laun
Jack McCann
S. Scott Van Blarcom

1985

Daniel Drew
Hanea El-Hizawi
Jennifer Gentry
James Isaak
Helen Kirschner
Greg Simon

1986

Laura Ann Cook
Hugh H. Howard, Jr.
Deborah Rath Kennison
Lisa Laufenberg
Lisa Wade
Percy Webster

1987

Chelsea Emery
Chall Fry
Gwyn Mauritz
Jenny Achilles Neff

1988

Ayden Adler
Katherine Eklund
Jason Grover
Heather Harrison
Tiffani Lee Mastronardi
Sandy Douthit Nannt
Lance Steinberg

1989

Daniela Brod
Dylan Coulter
Pernille Martens
Mary E. Waite

1990

Ashleigh Asaph
Kathryn Halton Findlay
Philip D. Polsky
Kar-Yee Wu

1991

Sarah G. Bechen
Sherrill Bennington
Clair Clark
Adam Kobos
Michael Scheetz Jr.

1992

Esther Daack
Shannon Dooley
Tara Sorensen

1993

T. Cameron Freres
Kevin Holliday
Tom Tewksbury
Laura Wallace

1994

Joann Bennington
T. Kyle Freres
Jo-Anne Landry
Karen Rollins
Kirsten Winchell

1995

Sharon Hatch
Amanda James
Kira Person
Jon C. Reali
Zach Russell
Sara E. Seeley
Sierra Snyder
Margaret Stearns
Adriane L. Thornton
Courtney Voelker

1996

Travis L. White

PAST OES PARENTS

David Abbott, M.D.
 Ms. Margie Adams
 Dr. & Mrs. James W. Asaph
 Mr. & Mrs. Roland F. Banks
 Peter & Missy Bechen
 Ken & Judith Bennington
 Dr. & Mrs. Robert W. Blakeley
 Dr. Max Bocek
 Mr. & Mrs. Philip R. Bogue
 Mona J. Brett
 Mr. & Mrs. William M. Brod
 Ann & Dave Bronson
 Mr. & Mrs. Dave Brooks
 Mr. Harry Bruss
 Paul & Patricia Buescher
 Mrs. Benjamin Bullwinkle
 Dr. Joyce Atlee Campbell
 Jon & Ellen Carder
 Sharon Chapman
 Alyce R. Cheatham
 Dr. & Mrs. Edgar Clark
 Michael & Pamela Coffeen
 Mrs. George W. Conklin
 Dan & Nancy Cook
 Penny Cookson
 The Very Rev. & Mrs. Roy Coulter
 Mr. Jon Emmett Cushman
 Terry & Leslie Davis
 Kuniko de Weese
 Harold & Merry Demarest
 Mrs. Nancy Doulis
 Mr. & Mrs. C.R. Duffie
 Mr. & Mrs. Franklin O. Dyer
 Margaretta Eakin
 Susan Woodruff Emery
 Kathy Engholm
 Mr. & Mrs. John B. Ferguson
 Dr. & Mrs. Bruce Fiske
 James & Marilyn Frank
 Ted & Diane Freres
 Mrs. Norman W. Frink, Sr.
 Helen J. Frye
 C. Bonbright Fuller
 Drs. Michael & Barbara Gaines
 John & Katie Garvie
 Mr. & Mrs. Richard Garvin



▲ Noreen Reali and her son, Jon, who graduated with the Class of '95 and is enrolled at Princeton University.

Mr. & Mrs. Richard Geary
 Kristine Gebbie
 Michael & Sidney Gold
 Robert & Nancy Gray
 Kris & Steve Gregg
 Mr. & Mrs. George H. Grimes
 Mr. & Mrs. Robert E. Grissom
 Mr. & Mrs. Ken Harrison
 Betty Lou Hatcher
 Bruce & Sherrie Holliday
 Mr. & Mrs. Robert A. Holmstrom
 Mr. & Mrs. James Holtz
 Bud & B. Mary Inkster
 Dr. & Mrs. Harvard E. Isaak
 Lani Jacob
 Marion & Gordon Janney
 Mr. & Mrs. Hans Jensfelt
 Mrs. George A.D. Kerr
 William G. Kirkman
 Mr. & Mrs. Tsutomu Kyuzaki
 Ronald & Lourdes Landry
 John & Rebecca LeCavalier
 Wes & Nancy Lematta
 Drs. Fernando & Dolores Leon
 Dana Mosher Lewis
 Mr. Roger A. Lewis
 Caroline Litzenberger
 Sylvia & John Mathews
 John & Gail McAllister
 Michael & Dana Morasch
 Mrs. A.M. Naab
 Mr. & Mrs. Jonathan E. Nichols
 Dr. & Mrs. Gary Ostenson
 The Rev. David T. Pace
 Dr. Frank & Karen Parker
 Jerry & Kathy Pate
 Judy Person
 Don Johnson & Robin Pope
 Mr. Gary R. Pope
 Sam & Anne Pope
 Quinland Daniels Porter
 Mr. & Mrs. Truman O. Price
 Mr. & Mrs. Ellsworth D. Purdy
 Charles & Noreen Reali
 Mr. & Mrs. William Sakai

Joyce Schafer
 Mr. & Mrs. Howard W. Schlepp
 Roberta & Fred Shaeffer
 Bev & John Shue
 Mr. & Mrs. E.U. Sims
 Mr. Jeffrey Smith
 Edward E. Sotka
 John B. & Susan Spring
 Bonnie & Roger Stanke
 Douglas H. & Frances N.D. Stearns
 Mr. & Mrs. Wm. T. C. Stevens
 Fred & Shelley Stoffer
 Pam Vohnson & David Streight
 Mrs. Richard C. Tevis
 Stephen & Carole Thomas
 Lee Thornton
 Mr. & Mrs. Henry Townend
 Mr. & Mrs. Charles W. Tuttle Jr.
 Ed & Wendy Ulman
 Dale & Patricia Walhood
 J. Davis & Gwen Walker
 Darrell Clukey & Sherrill Whittemore
 Lynne Parise & Mark Williams
 Bob & Jane Winger
 Milton & Jean Zell

Mr. & Mrs. James M. Harder
 Betty Lou Hatcher
 Mr. & Mrs. Robert Hendren Jr.
 Jim & Barbara Herbold
 Mrs. M.B. Hoffman
 John D. Karamanos
 August & Malle Kollom
 Janet Q. Lawson
 M.R. & Mildred Lillpop
 Mr. & Ms. John Longfield
 Mrs. Evelyn Z. Lundgren
 Mr. & Mrs. Robert A. Maurer
 Linita M. McDonald
 Capt. Joseph M. McDowell,
 U.S.N. (Ret.)
 Miri Lou Davis & Carter Morey
 Frances Morgan
 Carol D. Myers
 Harry & Yaeko Namba
 Mr. & Mrs. William J. Nance
 Mrs. Margaret Hall Newbegin
 Mr. & Mrs. Monford Orloff
 Dr. Frank & Karen Parker
 Zelda Platt
 Ms. Helen Ports
 Mr. & Mrs. Joe Robertson
 Mr. & Mrs. William Sakai
 Mr. & Mrs. Guerry R. Smith
 John & Elizabeth Smith
 Mr. & Mrs. Robert Smith
 Mr. & Mrs. F.M. Stevens
 Mr. & Mrs. Wm. T. C. Stevens
 Marcia D. Strickland
 Mrs. Palmer Swanson
 Mrs. Ruth Turney
 Mr. & Mrs. Victor von Schlegel
 Mr. & Mrs. Seymour Waldman
 Mr. & Mrs. Frank M. Warren Sr.
 Mr. & Mrs. Robert Wechsler
 Mr. Ray C. Wilson
 Dolores & C. Norman Winningstad
 Mr. & Mrs. Norman A. Workman
 Eleanor F. Zendt

GRANDPARENTS

Ruth Hopper Ballin
 B.P. Beilstein
 Mr. John R. Bermingham
 Mr. William E. Bethards
 Anita Cadonau Birkland
 Mrs. Edna Bolingbroke
 William C. & Dorothy Brewer
 Alyce R. Cheatham
 Doris Creakman
 Mrs. H. Lennox H. Dick
 Margaret L. Dietrich
 Linda & Howard Evans
 Mrs. Norman W. Frink, Sr.
 Mr. & Mrs. Dwaine E. Gipe
 Beverly Goldberg



▲ Harriet and Norman Workman represented the grandparent community for the 1995-96 Give & Grow OES FUND campaign. Their son Mark graduated from the School in 1969, and their grandchildren Jennifer, Christina and Elizabeth are current students at OES.

FACULTY AND STAFF

Jane Adams
 Margie Adams
 Paul Barthelemy
 Rev. Anne Bartlett
 Donna Beemer
 Stephen Brown
 Linda Brumfield
 Sandra Cade
 Joe & Sharon Cade
 Norene Calkins
 John Capen
 Leslan Carlson
 Dean Carrell
 Anne Cass
 Charyl Cathey
 Diana Chenoweth
 Corbet Clark
 Donna Cody
 Coleen Conkey
 Marilyn Connell
 Karen Corsini
 Roy Coulter
 Gary Crossman
 Sherry Davis
 Mike Devenney
 Cynthia K. Doran
 Nancy Doulis
 Alyce Drescher
 Nancy Dunn
 Ajene Ngoma Edo
 Chelsea Emery
 Jennifer Ensbury
 Diane Flack
 Joan M. Foy
 Pat Freeman
 Cara Frey
 Robbi Garvin
 Micheline Ghattas
 Claire W. Gilbert
 Sidney Gold
 Marland Goldsby
 David Goodman-Farley
 Nancy Gray

Kris Gregg
 Sarah Gunderson
 Terry Hansen
 Gary Havlik
 Rosa Hemphill
 Toni Holmberg
 Art & Martha Horst
 Tanja Vasiljevic Horvat
 Paula Hunger
 Janelle Janutka
 Susan Jensen
 Katherine Karafotias
 John H. Kerslake
 Jane E. Kirkpatrick
 Helen Kirschner
 Robin Klingler
 Sue Knight
 William G. Lamb
 Sue Larson
 John LeCavalier
 Joan Leigh
 Constance Leonard
 Dana Mosher Lewis
 Helen L. Linster
 Kate Loggan
 David Lowell
 Darele & Thelma Lowry
 Judy Lynch
 Jeff Marsh
 Cindi Marshall
 Atsuko Matsuyama
 Craig McClure
 Diane Meade
 Christina Meyerhoff
 Lilly Moore
 Karen Murray
 Kathy Narramore
 Carolyn C. Neighbor
 Sue Nicol
 Jack O'Brien
 Paula Overbeck
 David Pace
 Lou Paff
 Suzanne Paroulek
 Paul & Jean Patsis
 LouAnn Pickering
 Judy Pinkerton



▲ Upper School science teacher Tanja Horvat and her daughter, Ivana, at the Upper School science fair.

Gary R. Pope
 Anne S. Robinson
 Rothrock
 Lynne Sadler
 Joyce Schafer
 Debby Schauffler
 Karen Seder
 Moneeka Settles
 Bev Shue
 Alice Simpson
 Pat Smith
 Peter Spencer
 Bonnie Stanke
 Susan A. Stark
 Tye & Joan Schaller Steinbach
 Peter & Hope Stevens
 Katie Stewart
 Linda Stewart
 Shelley Stoffer
 Pam Vohnson & David Streight
 Karen Talus
 Becky Tooley
 Carlene Traverso
 Kristine M. Van Auken
 Kris Van Hatcher
 Jon von Behren
 Patricia Walhood
 Mary Warinner
 Shelley Weiller
 Robin Weitzer
 Lukie Wells
 Doug Whitmore
 Marie Winston
 Sylvia Wood
 Cherie Yokota
 Kelly Yustin
 Louisa & Harvey Zendt
 Carol Zosel

FRIENDS

Ms. Barbara Davis
 Mr. & Mrs. William W. Dunlap
 Mrs. Betty Hedberg
 Maripat & James Hensel
 Marion W. Jones
 Georgia T. Lekas
 Mr. & Mrs. William F. Meyer
 Thomas & Victoria Oxholm
 Mr. Roland Reynolds
 Manvel Schauffler
 Mary Louise Smith
 Mrs. William Tegart
 Mr. Hugh Walker
 Betty Jo Wright
 Dorothy & Donald Wysham

CORPORATIONS AND FOUNDATIONS

The Bank of New York
 The Boeing Company
 Henry Failing Fund
 Flowerree Foundation
 William & Flora Hewlett Foundation
 Nike Inc.
 James River Corporation
 Jewett, Barton, Leavy & Kern
 S.S. Johnson Foundation
 Kohnstamm Family Foundation
 Mason & Associates
 May Dept. Stores Co. Foundation
 MCG Northwest, Inc.
 Merrill Lynch & Co.
 Northwestern Mutual Life
 Peninsula Community Foundation
 Portland General Corporation
 PPG Industries Foundation
 SAFECO Corporation
 Thomas D. Taylor Foundation
 Tektronix Foundation
 West One Bank
 Woodburn, Postlewaite & Landers, CPAs



▲ Upper School humanities teacher Debby Schauffler was reunited with recent graduates on Young Alumni Day in January.

SPECIAL PURPOSE GIFTS

Upper School Library Gifts

Michael & Alice Greene
Ms. Susan Jensen
Mrs. Helen F. Weber

Middle School Library Materials

Mr. & Mrs. Jean D. Brault
Henry & Sharon Hewitt

Lower School Library Remembrance Fund

Mr. & Mrs. Robert Enloe

Upper School Library Remembrance Fund

Katherine Karafotias

Birthday Book Fund

These gifts honor the birthdays of OES Lower School Students.

James & Jane Adams
Daryl & Carole Adamson
Bob & Kathleen Ames
Jonathan & Bonnie Barg
Keith & Sharon Barnes
Les Godowski & Ellen Beilstein
Robb & Pam Bell
Charles Bellville & Ellie L. Tatum
Kate Bermingham
Mr. & Mrs. Narjala Bhasker
Jim & Linda Blinkhorn
Kay & Marty Brantley
Mr. & Mrs. Jean D. Brault
Robert & Janice Cassidy
Don & Brenda Chambers
Grace Tam & Kevin Cheung



▲ *The Lower School benefits each year from contributions to the Birthday Book fund, which honors the birthdays of OES Lower School students.*

Corbet & Myra Clark
Christine R. Cooper
John & Anne Coulter
Campbell Groner & Nancy Cowgill
Janet Maurer & Bill Davenport
Rich & Leah Davidson
Wayne & Julie Drinkward
Ms. Barbara Durrett
Clarice Johnston & Tina Enberg
Dr. & Mrs. Steven Eylar
Philip Allen & Babette Faris
Mike & Chris Feves
Robert & Kristina Fields
Peter & Nancy Fisher
Diane & Jim Flack
Brad & Kami Fraley
Vicki DeVito & Craig Fuller
Paul & Sarah Gary
John & Donna Ghiorso
Steve & Kathryn Goodenough
Stuart & Gail Goossen
Tom & Joyce Gordon
Alex & Karen Grauert
Kent & JoAnne Grewe
Scott & Sarah Grewe
Amy & Steve Haessler
Brian & Janice Harwood
Mary Michael & Kohel Haver
Fritz & Maggie Hayes
Sandra & David Herman
Henry & Sharon Hewitt
Jim & Carol Hibbs
Dr. & Mrs. Robert Hill
Gary & Ericka Hoffman
Karen & Ken Janoff
Curtis & Mariann Koop
Sean Kuni
Paige Parker Kuni
Ed & Margaret Kushner
Wesley Lewis
C. Allen & Sherry Logan
John & Priscilla Longfield
Elisabeth & Peter Lyon
Mr. Rein Magi
Bill & Cindi Marshall
Beth Mason
Bill & Tina McBride
Russ & Pat Mickiewicz
PJ Sears-Million
Greg & Diane Morgan
Chuck & Linda Morrow
Barbara Ports & Michael Moser
Frank & Kathryn Nance
Ms. Kathy Narramore
Mr. John Neupert
Julie Neupert & Peter Stott
Ingolf & Margaret Noto
Joe & Suzie Opsahl
Eric & Sarah Geary Ottem
Catherine Riffe & Tom Page
Philip & Lynne Papworth
Kirk & Jill Parker
Faye E. Pepin
Debra Platt
Chris & Kelley Platt
Don Johnson & Robin Pope
Terry & Jim Putnam
Jeff & Kathryn Rippey
Barbara Robins
Tom & Susan Robinson
Lee C. Olsen & David H. Ross
Loree & Ken Sakai
John & Trudy Samples



▲ *The OES girls' soccer team narrowly missed the State victory in 1996, placing second in state. Here, members of the varsity team gather on the sidelines after a game.*

Mary & Jack Schunk
Miles & Patsy Seeley
Dr. Brian Shaffer & Tina Stanley Shaffer
Mike & Janice Shainsky
Julie & Brett Sheppard
Frances & Currin Snipes
Phil VanderWee & Joan Snyder
Wayne & Diane Somers
Mr. & Mrs. Jonathan N. Spitz
Ernie & Erika Staley
Ms. Lory Storm
Ray and Mary Streinz
Todd & Carrie Stucky
Mr. & Mrs. Robert S. Sweeney
David & Nancy TenHulzen
Larry & Kim Teufel
Ned & Anne Thanouser
Michelle & Peter Trumbo
Mr. & Mrs. Peter B.B. Turney
Kris & Karen Van Hatcher
John & Frances von Schlegell
Bernd & Petra Wahler
Dr. Hans J. & Gisela Walitzki
Milton Kokubun & Wen-Lin Wang
Dr. & Mrs. Tyrone Wei
Morris & Paula Westlund
Dr. Richard & Jana Westlund
Robert & Stephanie Wight
Ms. Carla Wilson
Jeff & Lynn Wolfstone
Dr. & Mrs. Steven Zack

Middle School Celebration Book Fund

James & Jane Adams
Eric Cullander & Cristin Babcock
Mr. & Mrs. Jean D. Brault
Linda & Nate Dickinson
Eric & Jan Friedman
Nikki C. Hatton
Fritz & Maggie Hayes
Henry & Sharon Hewitt
Jan & Chris Kitchel
Wally & Cathy Krieger
Elisabeth & Peter Lyon
Maty & Nasrin Rahatzad
John & Trudy Samples
Mary & Jack Schunk
Mark & Leslie Workman

Bruce Hoof Memorial Fund

Elizabeth Kay Cashman
Jennifer Gentry
Mr. & Mrs. Bruce F. Hoof Jr.
Mr. Mike J. Smith
Kiyoto & Alice Uriu
Cary Wong

Counseling & Guidance Gifts

Mr. & Mrs. Thomas M. Landye
Martin & Marsha Mehr
Pam Johnson & David Streight

Financial Aid Gifts

Elisabeth Coats Sherif
Community of St. John Baptist

Girls' Soccer Team

Dale & Carol Stewart

Lower School Trip Fund

Mr. & Mrs. Narjala Bhasker

Marion Kingery Memorial

Mr. H. Victor Adix Jr.
Ann C. Andersen
Mrs. Ned Barclay Ball
Ms. Nancy Baker Bosch
Garthe Brown
Virginia M. Butchart
Mrs. Jean Adix Fogg
Mrs. Helen Gamble
Great Western Chemical Company
Mr. Alan Green Jr.
Mrs. U.S. Harkson
Mr. & Mrs. Robert A. Hiller
Mrs. M.B. Hoffman
Mrs. Joseph A. Labadie
Delight Kolar Leonard
Mrs. Joanne Miller Lilley
Mrs. Mary W. Maloon
William G. Maloon
Mrs. Richard Marlitt
Oregon Historical Society

Dr. Frank & Karen Parker
 Ms. Mary Rogness
 Mrs. B.C. Statter
 Russell & Nancy Taggard
 Fred & Elizabeth Wessinger

**Middle School
 Sound System**

Linda & Nate Dickinson
 Carol F. Floten
 Clarence & Myrtle Rae Greenwood
 Clyde Speidel & Paul Keown
 Maty & Nasrin Rahatzad

Upper School Newspaper

Bev & John Shue

Resident Department Gifts

Mr. & Mrs. Lee T. Dulin

**125th Anniversary
 Rose Garden**

Mrs. Patricia Kendall Apperson

Ski Team

Dale & Carol Stewart

Track and Field Program

Mary & Al Rollins Jr.
 Dale & Carol Stewart

Upper School Science

Pam & Bob Matheson

Gifts in Kind

Tom McGuirk & Cammie Brim
 Estate of Spencer R. Collins
 John & Anne Coulter
 Deloitte & Touche
 Lori Diaz
 C. Robert Dunsmore
 Robert & Kristina Fields
 Mark Foster & Miyoko Katabami
 Joan M. Foy
 Ms. Sarah Gunderson
 Mrs. U.S. Harkson
 Fritz & Maggie Hayes
 Carla Heckrodt & Julie Hallenbeck
 Mr. Michael Holst
 Drs. Judith Sobel & Gregory Koski
 Mr. & Mrs. James D. Langdale
 Gil & Jackie Lipshutz
 Dr. Don McNeill
 Julie Neupert & Peter Stott
 Jack O'Brien
 Mr. R.E. Clenton Richardson
 Phil VanderWeele & Joan Snyder
 Susan A. Stark
 Larry & Kim Teufel
 Michelle & Peter Trumbo
 Mr. & Mrs. Peter B.B. Turney
 Gary & Shirley Voelker
 John & Frances von Schlegell
 Dr. & Mrs. Masatoshi Yamanaka

**VOLUNTEERS'
 COMMON
 LINK AND
 PARENT
 ASSOCIATION
 LINKS**

The Volunteers' Common Link, the all-OES volunteer coordinating committee, oversees the parent volunteer program at OES and acts as the communication link for community-wide interests and activities in cooperation with the Parent Association Links (PALs), School administration, and the OES Board of Trustees. OES is indebted to its community of volunteers, who contribute so much of their time to the School.

Susan Gundle,
Chair
 Kay Brantley,
Chair of Volunteers
 Kathy Brault,
Treasurer
 Dana Ostenson,
Secretary
 Diane Morgan,
*Chair, Community
 Parent Education*
 Linda Dickinson,
*Volunteer Office Computer
 Operations Coordinator*
 Frances Spencer,
The Anthill
 Beth Warner,
Chair, US PAL
 Betsey Blessing,
US PAL Volunteer Coordinator
 Jana Westlund,
 Alice Kinzer,
 Mary Davis,
Co-Chairs, MS PAL
 Karen Grauert,
MS PAL Volunteer Coordinator
 Cindy Bambam,
Chair, LS PAL
 Kathleen Ames,
LS PAL Volunteer Coordinator

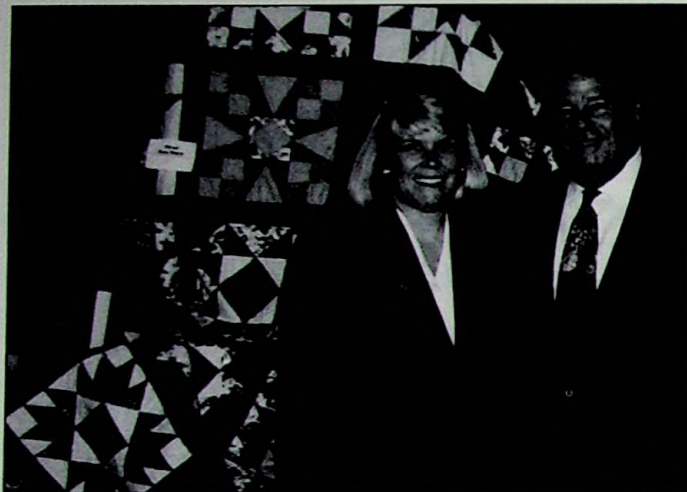
**Parent Association Link
 Officers and Committee
 Chairs**

Peter Bechen
 Afton Beutler
 Nancy Chapman
 Gayle Collins
 Chris Cooper
 Laurie Crossman
 Phyllis Davis
 Julie Drinkward
 Marna Elliott
 Nancy Eyer
 Kristina Fields
 Sally Fish
 Nancy Fisher
 Carol Floten
 Suzanne Greenburg
 Sharon Hewitt
 Catherine Hoffman
 Jill Inskeep
 Malgorzata Jeske
 Pat Karamanos
 Sharleen Kleber
 Cathy Kreiger
 Mary Laird
 Jeanette Larson
 John Longfield
 Priscilla Longfield
 Pam Matheson
 Linda Morrow
 Suzie Opsahl
 Dana Ostenson
 Jean Patsis
 Marcia Peters
 Terry Putnam
 Miriam Rogers
 Mary Rollins
 Loree Sakai
 Mary Sapp
 Jill Scheer
 Patsy Seeley
 Jill South
 Adrienne Souther
 Clyde Speidel
 Brigitte Stout
 Najla Totonchay
 Mary Warinner
 Beth Warner
 Syd Waskey
 Pam Wilcox
 Carla Wilson
 Leslie Workman
 Annette Zack

**OES ALUMNI
 ASSOCIATION**

The Alumni Association sponsored numerous activities during the 1995-96 year, including the 4th Annual Alumni Soccer Tournament, Founders' Day, Young Alumni Day and the 2nd Annual 3-on-3 Basketball Tournament, among others. The strength of the Alumni Association continues to grow with the energy and support of Alumni Board members, who serve a three-year term.

Mr. Jack McCann Jr. '84,
Board President
 Mrs. Patricia Kendall Apperson '48 JC
 Mrs. Meg Finch Bishop '77
 Ms. Daniela Brod '89
 Mrs. Beverly Hein Culp '47
 Mr. P. Beresford Daigle '80
 Mrs. Marjory Holman Day '28
 Ms. Marilyn DeVault '67
 Mrs. Nancy Morris Feldman '57
 Mr. Edward B. Haessler '71
 Mr. Sean Kuni '81
 Ms. Elizabeth Lilley '74
 Mr. Max M. Miller Jr. '74
 Mrs. Sandy Douthit Nantt '88
 Neena Fromm Nuhring '77
 Mrs. Janice Wiecks Reinmiller '57
 Mrs. Alice Kimball Trehwella '41
 Mr. Greg Simon '85
 Ms. Helen Kirschner '85



▲ Pat Karamanos, Chair of the 1996 Around the World Auction, poses in front of one of the numerous oral auction items with master of ceremonies, Gerry Frank.

AUCTION

The 1996 Around the World Auction raised a total of \$167,000. From this total, \$50,000 was added to the Edward E. Ford Endowment Fund. Income from the Endowment supports the professional growth and development of our outstanding faculty and staff. Another \$50,000 will have an immediate effect on faculty growth and development, as it has been added to the School's 1996-97 operation budget to pay for conferences, graduate study, professional leave, research, and collaborative pedagogical efforts. The remaining \$67,000 is being used to enhance parking on campus. Thanks to all the parents, alumni, trustees, businesses and special friends who joined the auction committee to support our faculty and staff.

1996 OES Auction Flight Crew

General Chair
Pat Karamanos

Faculty Liaison
Louisa Zendt

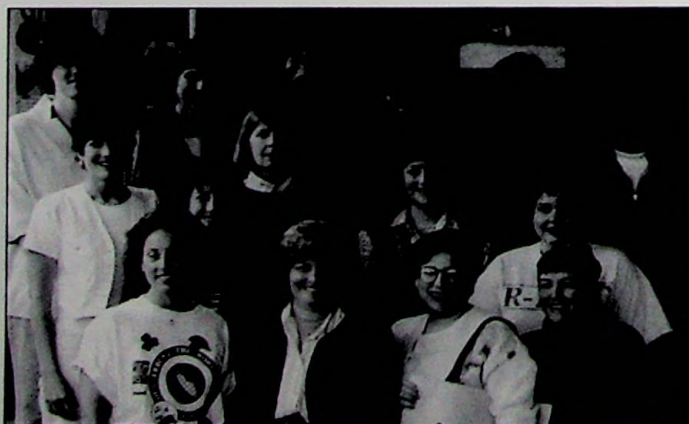
Pacific Rim Solicitations
Richard Sherwood

Secretary/Office Operations
Anne Robinson

Treasurer
Carol Floten

Advertising/Publicity Co-Chairs
Kay Brantley
Kathleen Ames

Catalog Chair
Frances Snipes



▲ The 1995-96 Around the World Auction Committee.

Clean-Up Co-Chairs

Mike Carrier
Sam Karamanos

Corporate Liaisons

Patty and Steve Williams

Decoration Co-Chairs

Kathryn Rippey
Jill Inskeep

Food & Beverage Chair

Cheryl Carrier

Invitation Co-Chairs

Pam Matheson
Kathy Brault

Oral Auction Chair

Fran von Schlegell

Silent Auction Co-Chairs

Miriam Rogers
Dana Ostenson
Jana Westlund

Special Events Co-Chairs

Leslie Workman
Afton Beutler

Solicitation Chair

Judy Jensen

Volunteer Chair

Daisy Housel-Miller

Will Call Chair

Beth Mason

The Ground Crew

A very special thank you to the Oregon Episcopal School faculty, students, parents and friends who contributed their time, talents and dedication to this event.

Carilyn Alexander
Phil Allen
Kathleen Ames
Sharon Barnes

Afton Beutler
Kay Brantley
Jean Brault
Kathy Brault
Joe Cade
Sharon Cade
Norene Calkins
John Capen
Leslan Carlson
Dean Carrell
Cheryl Carrier
Mike Carrier
Christi Carter-Lee
Charyl Cathey
Brenda Chambers
Diana Chenoweth
Corbet Clark
Karen Corsini
Gary Crossman
Fernanda D'Agostino
Sherry Davis
Cindi Devich
Kathy Dodds
Jennifer Ensbury
Jana Evans
Karen Fink
Richard Fink
Nancy Fisher
Diane Flack
Jim Flack
Carol Floten
Brian Foulkes
Pat Freeman
Sydney Gold
Karen Grauert
Nancy Gray
Bob Greenberg
Suzanne Greenberg
Nancy Greene
Myrtle Rae Greenwood
Sarah Gunderson
Susie Gundle
Kelly Hale
Molly Harris
Janice Hays-Cavada
Sharon Hewitt
Erica Hoffman
Daisy Housel-Miller
Vicki Howell
Paula Hunger
Myrna Icombe
Jill Inskeep
Karen Janoff
Janelle Janutka
Judy Jensen
Eileen Johnson
Kathy Karafotias
Pat Karamanos
Sam Karamanos
John Kerslake
Katherine Kimball
Alice Kinzer
Helen Kirschner
Chris Kitchel
Jan Kitchel
Sharleen Kleber
Elizabeth Kortenhof
Cathy Krieger
Marty Kuhr
David Larson
Jeanette Larson
John LeCavalier
Joan Leigh

Dana Lewis
 Al Logan
 Sherry Logan
 Kate Loggan
 David Lowell
 Judy Lynch
 Elisabeth Lyon
 Jeff Marsh
 Abigail Marshall
 Cindi Marshall
 Beth Mason
 Pam Matheson
 Atsuko Matsuyama
 Pat Mickiewicz
 Sandra Miles
 Ted Miller
 Linda Morrow
 Kathy Narramore
 Joe Opsahl
 Suzie Opsahl
 Dana Ostenson
 Sarah Geary Ottem
 David Pace
 Lou Paff
 Lynn Papworth
 Marcia Peters
 Hal Phillips
 Judy Pinkerton
 Debra Platt
 Terry Putnam
 Suzie Regan
 Kathryn Rippey
 Anne Robinson
 Nick Robinson
 Susan Robinson
 Miriam Rogers
 Rothrock
 Lynne Sadler
 Debbie Schaffler
 Karen Seder
 Richard Sherwood
 Virginia Slater
 Frances Snipes
 Jay South
 Paula Spooner
 Sue Stark
 Linda Stewart
 Shelley Stoffer
 David Streight
 Meri Taylor
 Anne Thanhouser
 Susan Thayer
 Carlene Traverso

Carol Tucker
 Laurie Turney
 Pamela Vohnson
 Fran von Schlegell
 Patti Walhood
 Dale Walhood
 Mary Warinner
 Sydnie Waskey
 Lukie Wells
 Jonathon Wells
 Jill Welsh
 Jana Westlund
 Paula Westlund
 Stephanie Wight
 Patty Williams
 Steve Williams
 Jane Winger
 Patricia Winningstad
 Lynn Wolfstone
 Bill Wolseben
 Leslie Workman
 Mark Workman
 Harvey Zendt
 Louisa Zendt

Around the World Auction Donors

28 East
 AAA Oregon
 ABC Kids N' Teens
 Sheryl and Kip Acheson
 Hugh Ackroyd
 Jane and James Adams
 Carole and Daryl Adamson
 Agape Hair Design
 Ravi Agarwal
 Dr. and Mrs. Aftab Ahmad
 Albion Grill
 Carilyn M. and Richard C. Alexander
 Philip Allen and Kathleen Faris
 Alta Lodge
 Alta Ski Lift Company
 Alta Sports
 Kathleen and Bob Ames
 Animal School, Inc.
 Annie Bloom's Books
 Anonymous
 Anonymous
 Anonymous
 The Anton Family
 Atwater's Restaurant and Lounge
 Avia Studios
 Avid
 Azteca Mexican Restaurants
 Bagel Basket
 Baggallini/West Linn
 Covert Bailey
 Baker, Winokur, Ryder
 Amy Barrett
 Sharon and Keith Barnes
 Baskin-Robbins/Uptown
 Beaverton Auto Parts
 Beaverton Batting Cage
 Beaverton Book Company
 Missy and Peter Bechen
 Bee Tailors, Cleaners, Inc.
 Ellie Tatum Bellville
 Donna Beemer
 Benihana
 Catherine and Charlie Bergman
 Best Western Hood River Inn

Afton and Robert Beutler
 Shanda and Narjala Bhasker
 Larry Black
 Black Butte Stables Inc.
 R. Bloom's Black-Eyed Susan
 Natalya and Yan Borodovsky
 Kay and Marty Brantley
 The Brantley Boys
 Kathy and Jean Brault
 Debby and Terry Brown
 Dave Bryant
 Lucy and John Buchanan
 Burlingame Market
 Dr. and Mrs. John Bussman
 Sharon Cade
 Cafe Des Amis
 California Pizza Kitchen
 Sally and Cliff Canepa
 Canyon Glass
 Canyon Pearl Restaurant
 Carla Cares
 Leslan Carlson
 Dean Carrell
 Cheryl Carrier
 Sandy Carter
 Christi Carter and Associates
 Patricia Casey
 Anne and Richard Cass
 Charyl Cathey
 Patsy and Ding Chan
 Dr. and Mrs. Richard Chapman
 Chef du Jour Catering
 Children's Museum of Portland
 Chinook Winds, Siletz Tribe
 Chown Hardware
 Chuck E. Cheese's Pizza
 Clackamas River Racquet Club
 Corbet Clark
 Janet and Ed Clark
 Cline/Fay Institute Inc.
 Donna Cody
 Gayle and Dennis Collins
 Columbia Distributing Company
 Concannon Paper
 Coleen Conkey
 Scott Corris
 Karen Corsini
 Deborah and Michael Coulter
 Father Roy Coulter
 Creative Images Photography
 Creative Play Structures, Inc.
 Gary Crossman
 Crown Crafts, Inc.
 Crown Jewelers
 Barry Daigle
 Dr. Edith Dal Mas
 Dave's Bird Feeders
 Barb Davis
 Marilyn De Vault
 Dennis Uniform
 Deschutes River Broadcasting
 Deschutes White Water Service
 Mike Devenney
 Cindi and Chris Devich
 Disneyland
 Harriett Dixon
 Rocky Dixon
 Dot Golf Center
 Nancy Doulis
 Alyce Drescher
 Julie and Wayne Drinkward
 Steve Dunn

Nancy Dunn
 Barbara and Taylor Durrett
 Robert Durst
 Sharon Dzialo
 Elephants Delicatessen
 Embry and Company
 Julie Emry
 Enchanted Forest
 Epsilon Portland, Inc.
 Lauren Eulau
 Diane and Matt Evans
 Jana Evans
 Faces Unlimited
 Susan Thayer and Paul Farago
 Kendra and David Farris
 Julie Feeley
 Mr. and Mrs. William Findlay
 Sally, Jerry, Michael and Natalie Fish
 Diane Flack
 Flowers by Dorcas
 Paul Fortino
 Brian Foulkes
 Four Seasons Bowling Center
 Fran Frane
 Gerry Frank
 Marilyn and James Frank
 Julie Frantz and Craig Murphy
 Fred Meyer/Raleigh Hills
 French Prairie
 Friends of Elk Rock
 Barbara and Michael Gaines
 Maury Galbraith
 Gango Gallery
 Garden Home Interiors
 Micheline Ghattas
 Jeff Gianola
 Gifford-Doving Florists
 Claire Gilbert
 Brian Goddard
 Sidney Gold
 Gold's Gym
 David Goodman-Farley
 Gail and Stuart Goosen
 The Governor Hotel
 Nancy Gray
 Great Harvest Bread Co.
 Suzanne and Bob Greenberg
 Myrtle Rae and Clarence Greenwood
 The Greenwood Inn/
 Pavilion Restaurant
 Bob Gregg
 Jennifer and Bob Groves
 Sarah Gunderson
 Susan and John Gundle
 Ed Haessler
 Hannah, Kelly and Bob Hale
 The Halton Company
 Harder Mechanical
 Molly and Chip Harris
 Sandy and Jeri Haskins
 David Hassin and
 Mary McDonald-Lewis
 Senator Mark O. Hatfield
 Margaret and Fritz Hayes
 Marlyn and Robert Hendren
 David Herman
 Sharon and Henry Hewitt
 Dr. Friderike Heyer
 Jim Hibbs
 Hickox Salon
 High Desert Software
 Meredith and D.A. Hilderbrand



▲ US librarian Kate Loggan holds one of the more lively items up for bid at the Around the World Auction.

VOLUNTEERS AND SPECIAL EVENTS



▲ Former headmaster Peter Stevens eyes the auction catalogue during the oral auction. In the background, Catherine and Charlie Bergman watch the bidding.

Hilton Hotel/Portland
 Catherine and Jerry Hoffman
 Becky and Tom Holder
 Hollywood Entertainment
 Martha Horst
 Lyall Howell
 Humberston Travel
 Paula Hunger
 Ice Chalet at Lloyd Center
 Jill and John Inskeep
 Mike Izutari
 Izzy's Pizza
 Jan and Peter Jacobsen
 Karen and Ken Janoff
 Judy and Pat Jensen
 Betsy Johnson
 Eileen Johnson
 Clarice Johnston
 Kaady Car Washes
 Kathy Karafotias
 Pat and Sam Karamanos
 KATU-TV
 Jane Kenney-Norberg
 Kienow's Food Stores
 Mary Catherine King
 Alice Kinzer
 Jane Kirkpatrick
 Helen Kirschner
 Mary and Peter Kiruthi
 Christine and Jan Kitchel
 Sharleen and Klaus Kleber
 Sue Knight
 Shelley Knowlton
 Kobos Company
 Malle and August Kollum
 Elizabeth Kortenhof
 KPTV-12
 Cathy and Wally Krieger
 Kuni Cadillac and BMW
 The Rt. Rev. Robert Ladehoff
 Lake Grove Veterinary Clinic
 Lakeside Gifts
 Jeannette and David Larson
 Sue Larson
 Laserport
 The Lawson Children
 Elizabeth Leach Gallery

Christi Carter Lee
 Joan Leigh
 Dick Lenker
 Dr. Wesley A. Lewis
 Larry V. Lewman
 Liza Lilley
 Paul Linnman
 Liquid Sunshine Shops
 Priscilla and John Longfield
 Joan Lowe
 David Lowell
 Darele Lowry
 PGA Golf Championship
 Elisabeth and Peter Lyon
 MacKay Wilderness Travel
 Mai-Lill Magi
 Malibu Grand Prix
 Mallardith N.W. Adventures
 Mande's Salon of Style
 Marco's Cafe and Espresso Bar
 Marsee Baking
 Jeff Marsh
 Abigail Marshall
 Cindi Marshall
 Masami L' Art à RiverPlace
 Beth Mason
 Pam and Bob Matheson
 Atsuko Matsuyama
 Metro Washington Park Zoo
 Jack B. McCann, Jr.
 McCormick and Schmick's
 Management Group
 McCormick's Fish House and Bar
 Tom McGuirk and Cammie Brim
 McMenamin's
 Karen Meffors
 Meier and Frank
 Miles Merwin
 Metro Washington Park Zoo
 René Mijo
 Alan Miller
 Daisy and Ted Miller
 David Miller
 Matt Miller
 Dr. James Miller and Laurie Hesla
 Julianna Moller
 Tatiana Moller-Lawson
 Mickey Morey and Leslie Mackenzie
 Lily Moore
 Diane and Greg Morgan
 Lynne and John Morrison
 Chuck and Linda Morrow
 Mountain Magic Ski Club
 Mt. Bachelor Ski Shop
 Mt. Hood Meadows and Ski Resort
 Mt. Hood Railroad
 Kate Murphy
 Murphy/Frantz Family
 Kathryn and Frank Nance
 Kathy Narramore
 Jack Neer
 Cookie Neighbor
 Julie Neupert
 Julie Neupert Interior Design
 New Fitness Inc.
 Ed Newbegin
 Sue and Scott Nicol
 Nike Inc.
 Judith Njue
 Father Steve Norcross
 Northwest Conservatory of Dance
 Northwest Driving School

Northwest Jeep Eagle Hummer
 Northwest Martial Arts Academy
 Northwest Natural Gas
 Oaks Park
 OES Alumni Association
 OES Beginning School Teachers
 OES Executive Committee
 OES Faculty/Staff
 OES Faculty/Staff Quilters
 OES Fifth Grade Class/Corsini
 OES Fifth Grade Classes
 OES First Grade Classes
 OES Fourth Grade Class/Narramore
 OES Kindergarten Class/Linster
 OES Kindergarten Class/Marshall
 OES Kindergarten Class/Yokota
 OES Lower School Students
 OES Pre-Kindergarten Class
 OES Summer Wonder Program
 OES Third Grade Class/Calkins
 OES Winterim to England
 OES Winterim to Ireland
 OES Winterim to Kenya
 Jack Ohman
 The Old Spaghetti Factory
 The Olive Garden
 Giorgina Olson
 Suzie and Joe Opsahl
 Oregon Ballet Theatre
 Oregon Children's Theatre Co.
 Oregon Coast Aquarium
 Oregon Eye Specialists
 The Oregon Golf Club
 Oregon Historical Society
 Oregon History Center
 Oregon Mountain Community
 Oregon Shakespeare Festival
 Oregon Symphony
 Oregon Trail Trolley
 Wendy and Chet Orloff
 Otis Cafe
 Ouzel Outfitters
 Debi Owen
 Pacific Coast Restaurants
 Pacific Products
 Packouz Jewelers
 Papa Murphy's Pizza
 Papaccino's, Inc.
 Lynne and Philip Papworth
 Park View Alpacas
 Parker Furniture
 Sue Paroulek and Squeak
 Parr Lumber
 Nancy and David Paskowitz
 Illene and Lawrence Pevec
 Dr. and Mrs. John Phillips
 Hal Phillips
 LouAnn Pickering
 Pier 1 Imports
 Ping-AT&T Wireless Services
 Judy Pinkerton
 Pizzacato
 Debra and Jay Platt
 Kelley and Chris Platt
 Lauren Platt
 Terry Poon
 Gary Pope
 Portland Art Museum
 Portland Bottling Co.
 Portland General Electric
 Portland Music Co.
 Portland Rose Festival Association
 Portland Trail Blazers
 Lane Powell Spears Lubersky
 Raleigh Hills Veterinary Clinic
 The Red Chip Review
 Red Lion/Jantzen Beach
 Reed College Reactor Facility
 Suzanne and David Regan
 Dr. Daniel Reisberg
 Chris and Chuck Reynolds
 Kathryn and Jeff Rippey
 John Ritchie
 Harry Ritchie Jewelers
 River Drifters Whitewater Tours
 River Youth Camps
 Robert's of Portland
 Dr. Joe Robertson
 Anne Robinson
 Susan and Tom Robinson
 Roy-Boys
 Ed Rubovits
 Lynne and Richard Sadler
 Ilene Safyan
 Masami and Hiroshi Saitoh
 Salishan Lodge



▲ Current OES parent Anne Thanbouser bids with enthusiasm.

Sammy's Flowers
 Mia and Lou Savage
 Saylor's Old Country Kitchen
 Scamps Pet Center
 Joyce Schafer
 Debby Schaffer
 Jill and Robert Scheer
 Juliet and Steven Schlessner
 Paul Schneider
 Barbara Sue Seal Properties, Inc.
 Segal's for Children
 Rich Sherwood
 Joel Shilling
 Shilo Inn/Palm Springs
 Bev and Johnny Shue
 Carrie and Bernie Silvernail
 Simon, Toney and Fischer, Inc.
 Skateworld
 Skopli's Classic Collections/
 Carlisle of New York
 Smith and Bevell Jewelers, Inc.
 Frances and Currin Snipes
 Dennis Snook
 Dick Sorenson
 Ron Sorensen
 Paula Spooner
 Bonnie Stanke
 Starbuck's
 Sue Stark
 Hope Stevens
 Katie Stewart
 Linda Stewart
 Stockpot and Double Eagle Golf
 Shelley and Fred Stoffer
 Doreen Strong
 Carrie and Todd Stucky
 Sunshine Dairy Foods, Inc.
 Bob Sweeney
 Gail Sweeney
 Tanning and Beauty by Jola
 Target/Washington Square
 Meri Taylor
 Taylor Made Enterprises
 Tazo Teas
 David, Nancy and Nick TenHulzen
 Teufel Nursery, Inc.
 Anne and Ned Thanhouser
 Dave Thomas
 Liz and Rick Thoresen
 Thrustmaster, Inc.
 Tickled Pink Gift Shop
 Gundars Tilmanis
 Najla Totonchy
 Marilyn and Ray Town
 Towne Posters and Papers
 True Brew and Old Friends Antiques
 Michelle and Peter Trumbo
 The Trumbo Family
 Tu Tu' Tun Lodge
 Carol Tucker
 Twist
 U.S. Bank of Oregon
 Umpqua Feather Merchants
 Uptown Hardware
 Terri Van
 Kris Van Auken
 Van Duyn Chocolates
 Viking Industries
 Will Vinton Studios
 Visual FX Salon
 Fran and John von Schlegell

Wade Manufacturing
 Patty Walhood
 Gisela and Hans Walitzki
 Wen-lin Wang
 Mary Warinner
 Beth and Bob Warner
 Dr. and Mrs. Tyrone Wei
 Janice and David Weitzer
 Robin Weitzer
 West Hills Racquet and Fitness Club
 Western Pet Supply
 Jana and Richard Westlund
 Paula and Morris Westlund
 Fran Whisnant
 Doug Whitmore
 Widmer Brothers Brewing Co.
 Wild Bird Center
 Wildwood Restaurant and Bar
 Mimi and Charles Williams
 Patty and Steve Williams
 Carla D. Wilson
 David Wilson and Nancy Greene
 Patricia Winningstad
 Virginia Euwer Wolff
 Mr. and Mrs. Peter Wolochow
 Leslie and Mark Workman
 Stephanie Wight
 Susan Yvonne and Masatoshi
 Yamanaka
 Yuen Lui Studio, Inc.
 Kelly Yustin
 Annette and Steven Zack
 Zefiro Restaurant and Bar
 Christy Zendt
 Louisa and Harvey Zendt

Around the World In-kind Donors

Sheryl and Kip Acheson
 Jane and Jim Adams
 Tony Adams
 Carilyn and Richard Alexander
 Philip Allen and Kathleen Faris
 Babcock & Jenkins Direct, Inc.
 Rob Bardel
 Missy and Peter Bechen
 Burlingame Market
 Sally and Cliff Canepa
 Jennifer and Dean Carrell
 Cheryl and Mike Carrier
 Anne and Rich Cass
 Charyl Cathey
 Columbia Distributing
 Linda and Nate Dickinson
 Rocky Dixon
 Julie and Wayne Drinkward
 Robert Durst
 Susan Woodruff Emery
 Este's Fine Clothing
 Gango Gallery
 Molly and Chip Harris
 Jeri and Sandy Haskins
 David Hassin and Mary McDonald-
 Lewis
 Maggie and Fritz Hayes
 Vicki and Lyall Howell
 Karen and Ken Janoff
 Eileen and David Johnson
 Chris and Jan Kitchel
 Milton Kokubur and Wen-lin Wang
 Malle and August Kollom
 Konditorei



▲ *Volunteers and guests dressed appropriately for the Around the World Auction. Here, OES faculty/staff members Diana Chenowith and John Capen display their international garb.*

Cathy and Wally Krieger
 Paige and Sean Kuni
 Langdon Florist and Greenhouses
 Christi and Granville Lee
 Elisabeth and Peter Lyon
 Mai-Lill Magi
 Tom McGuirk and Cammie Brim
 Karen Mefford
 Mercantile
 Mickey Morey and Leslie Mackenzie
 Lynne and John Morrison
 Linda and Chuck Morrow
 Anne and David Munro
 Sue and Scott Nicol
 Nordstrom
 OES Extended Care Program
 Suzie and Joe Opsahl
 Lynne and Phil Papworth
 Phil's Uptown Meat Market
 Helene and Harold Phillips
 Atsumi Polstra
 Gary Pope
 Portland Bottling Company
 Red Lion Hotels and Inns
 Suzanne and David Regan
 Rex Recording & Video Post
 Kathryn and Jeff Rippey
 Susan and Tom Robinson
 Masami and Hiroshi Saitoh
 Julie and Brett Sheppard
 Bev and John Shue
 Hope and Peter Stevens
 Sunshine Dairy Foods, Inc.
 Anne and Ned Thanhouser
 Michelle and Peter Trumbo
 Carol and Thomas Tucker
 Laurie and Peter Turney
 Fran and John von Schlegell
 Patty and Steve Williams
 Kelly and Brian Yustin
 Annette and Steve Zack
 Louisa and Harvey Zendt

Auction Catalog Advertisers

Ad-Mail, Inc.
 Adamson Landscape Design:
 Carole Adamson

Alten Sakai and Company:
 Ken Sakai
 American Janitorial Supply
 Arthur Andersen:
 Sandy Haskins
 Bidwell and Company, Inc.
 Camp Westwind
 Crown Pacific Ltd.:
 Peter Stott
 Dunkin Donuts
 Sharon Dzialo European Facials
 Ferguson, Wellman, Rudd, Purdy
 & Van Winkle, Inc.
 First Interstate Bank of Oregon
 The Hasson Company:
 Teri Rosette
 Warren Hirsch, Interiors
 Hot Pots:
 Penny Cookson
 JBL&K Insurance
 KPTV-12:
 Marty Brantley
 Lake Grove Veterinary Clinic:
 Jerry Hoffman
 Lane Powell Spears Lubersky:
 Jeff Wolfstone
 Liquid Sunshine:
 Diane Somers
 Maxillofacial Surgery Associates:
 David TenHulzen
 Meier and Frank:
 Patty Williams
 Michael's of Oregon:
 Jean Brault and Jack Durrett
 Miller Nash Wiener Hager &
 Carlsen
 Monte Shelton Motor Co.
 Northwest Children's Theater and
 School
 OES Auction Committee
 Oregon Eye Specialists:
 David Larson
 P&C Construction Co.
 PaineWebber:
 Matt Miller
 Park View Alpacas:
 Nancy TenHulzen
 Portland Golf Club
 Providence Health System
 The Red Chip Review:
 Barbara and Marc Robins
 Barbara Sue Seal Properties, Inc.
 Smith Barney:
 Joe Opsahl
 SRG Partnership
 Stoel Rives LLP
 Sunshine Dairy Foods, Inc.:
 Sam Karamanos
 Terrafirma:
 David Hassin
 U.S. Bank of Oregon
 Valley Lanes
 Viking Industries, Inc.:
 Dick Alexander
 West Coast Productions
 Windermere:
 Mary Davis
 Women's Healthcare Associates:
 Cristin Babcock, Gary Hoffman
 and Miles Seeley

Summerbridge Portland is a collaborative effort by Oregon Episcopal School and the Catlin Gabel School to prepare motivated middle school students for success in rigorous high school programs. The program stems from a strong commitment on the part of the two schools to focus on students who have had limited edu-

and creativity. The summer program is complimented by school-year tutoring, Saturday schools, high school counseling for eighth graders and other forms of academic and personal support.

In addition to preparing middle school students for success in high school, Summerbridge serves as a training ground for a new generation of teachers. For young faculty members, Summerbridge is a total immersion into the field of education. They emerge from their summer of teaching with a strong sense of empowerment and improved organizations skills.

This year, OES students Heather Curl and Brian Crossman were among the faculty. Heather graduated from

the Summerbridge program after attending for three years, and will also volunteer during the school year and on Saturdays as a tutor and teacher.

OES is grateful to the following donors for supporting this important program. We wish to extend special recognition to the Meyer Memorial Trust for their continuing support and commitment to Summerbridge Portland.



▲ Summerbridge students engage in a friendly tug-of-war contest.

cational opportunities. Summerbridge Portland was founded in 1992. It is one of thirty Summerbridge programs across the nation, and is modeled on the original program, founded at San Francisco's University High School in 1978.

This summer's six-week program began in late June for a diverse group of 85 students just entering the seventh, eighth and ninth grades. Classes were held on the Catlin Gabel campus this year, but will rotate back to OES during summer 1997. A talented faculty of 29 high school and college students served as their teachers and role models.

Summerbridge's stimulating summer session emphasizes reading, writing, math, critical thinking, and study skills. The program also focuses on nurturing student leadership, self-esteem,



▲ Summerbridge students exercise their creative sides.

Summerbridge Donors

Peter & Missy Bechen
 Andrew, Patricia, & Kristian Beyer
 Black United Fund of Oregon
 Douglas Campbell
 City Center Parking
 Ed & Janet Clarke
 Cogentrix
 Columbia Distributing
 Harriett Dixon
 Dodge Foundation
 Bob Durst
 Endeavour Capital
 Fred Meyer, Inc.
 Nels Gabbert
 Scott & Pam Gibson
 Sydney Gold
 Richard & Ruth Keller
 The Kohnstamm Family Foundation
 Kevin Kohnstamm
 Sean Kuni '81
 Learn & Serve
 Jack & Carolyn Loacker
 Elisabeth Lyon
 Alice McCartor
 Michael's of Oregon
 NIKE, Inc.
 Oregon Community Foundation
 Pacific Gas Transmission
 PacifiCorp
 PacTrust Ltd.
 Lark Palma
 R & H Construction
 Pam Sankey
 Jim Scott
 Richard & Leoni Smith
 Stoel Rives Boley Jones & Grey
 William Swindells
 The May Co.
 US Bank
 USWest Communications
 Viking Industries
 Henry Wessinger
 WKJB Foundation/Bob Howitt
 Workathon

HERITAGE

The Heritage Society honors those who provide for OES through their estate planning. For 127 years, OES has benefited from the long-range planning and vision of thoughtful trustees, alumni, parents, faculty, staff and friends. The School is grateful to past and present Heritage Society members for their thoughtfulness and generosity, which is instrumental in building the OES endowment and helps secure our future.

Anonymous (2)	Mr. & Mrs. W.R. Lake Jr.
Mr. Charles A. Adams	Caroline Litzenberger
Mrs. Patricia Kendall Apperson '48 JC	Mrs. Patricia Simmons Maulbetsch '41 JC
Mrs. Ned Barclay Ball	Heather Michet '74
The Rev. James T. Boston	Mr. Louis H. Paff
Ms. Jo de Bruin	Mrs. Cynthia Coats Railton '53
Mr. & Mrs. William S. Findlay	Mr. & Mrs. John W. Rath
Mrs. Anna Pauley Gulley '17	Cdr. Elizabeth Reeves '32 & '35
Bruce & Sherrie Holliday	Mrs. Howard Sargent '35
Mr. James D. Hutchison	Lenita & Michael Scheetz
Lani & Gary Jacob	Lee Thornton
Marion & Gordon Janney	Mrs. J.A. Warren '33
Miss Marian Jenkins '20	Mrs. Betty Jo Wright
Miss Ruth Jenkins '20	Mrs. Margaret Reeves Yick '30 & '33 JC
Ms. Elizabeth Johnson '69	



▲ Lower school students gather for a photo during recess.

The Class of 1996

College Choices

- Ashley Berman**
Harvard University
- Sarah Bickford**
DePaul University (deferring)
- Amy Davis**
Portland Community College
- Brian Davis**
Vassar College



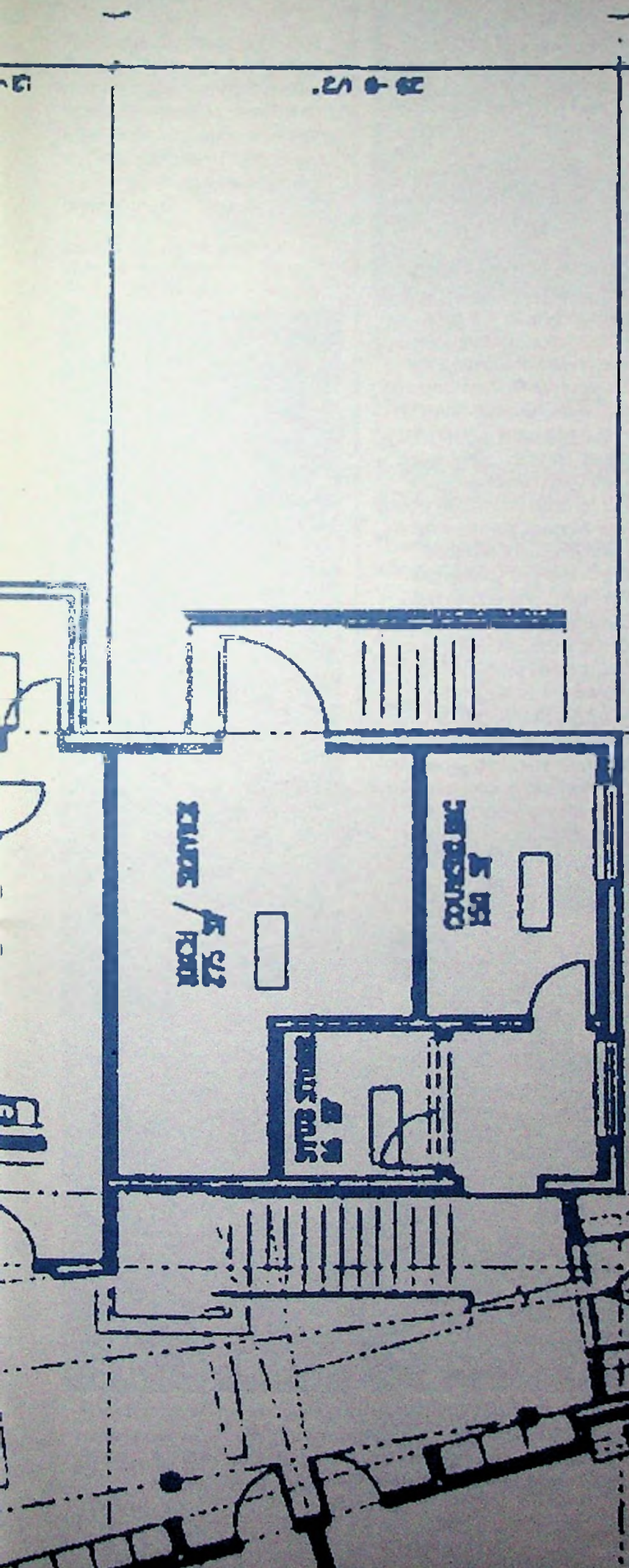
▲ *The Class of 1996.*

- Brad Feltz**
University of Washington
- Lorissa Foster**
Dartmouth College
- Adam Greene**
Bowdoin College (deferring)
- Amy Greene**
Randolph Macon University
- Jeff Herman**
University of California at Berkeley
- Kyle Hoelscher**
Trinity University (Texas)
- Cathy Huynh**
Whitman College



▲ *Members of the 1995-96 Cum Laude Society gather in the Chapel just a few days before graduation. Back row from left: Keita Miyazaki, Matt Slater, Carl Russell, Ryan Radecki, Kendra Smith, and Brian Davis. Front row from left: Lorissa Foster, Galena Kline, and Julia Weitzer.*

- Cam Kellett**
Clark College
- Galena Kline**
University of Puget Sound (Honors College)
- John Lamb**
Trinity University (Texas)
- Keri Lashbaugh**
Pacific Lutheran University
- Cassie Lautenschleger**
University of Oregon (Honors College)
- Jung Ah Lee**
New York University
- John Liu**
Syracuse University
- Keita Miyazaki**
Reed College
- Tristan Morse**
Oregon State University
- Erin Murphy**
Bates College
- Lee Njue**
Morehouse University
- Darren Olsen**
University of Chicago (deferring)
- Louise Osborne**
University of Washington
- Ryan Radecki**
Johns Hopkins University
- Carl Russell**
Harvey Mudd College
- Yosuke Sawada**
Keio (Tokyo, Japan)
- Evan Seifert**
Carlton College
- Kathi Shoemake**
University of Washington
- Matt Slater**
Dartmouth College
- Kendra Smith**
Vassar College
- Kristen Solberg**
Willamette University
- Cam Stewart**
Florida Tech
- Simone Stout**
Bryn Mawr College
- Nicole Swink**
Vanderbilt University
- Shizuka Takanishi**
Syracuse University
- Ryan Taylor**
Linfield College
- Jack Teng**
Boston University
- Tom Teng**
University of San Francisco
- Kay Washington**
Deferring
- Rob Webber**
Deferring
- Julia Weitzer**
Colorado College (deferring)
- Travis White**
University of Oregon
- Kei Yamaguchi**
California School of Arts and Crafts



M A K I N G A
Difference

Oregon Episcopal School

“Over the past year, OES has certainly proven itself as a community which sets goals and reaches them! The most compelling evidence now stands two stories high in the middle of our campus—our new Middle School facility, which is now filled with students and faculty.”

—Peter Bechen,
*Middle School
Campaign Chair*

M A K I N G A

Difference

WITH A NEW MIDDLE SCHOOL

Final Report of Phase I of the Master Plan

Dear Parents, Alumni and Friends of OES,

Over the past year, OES has certainly proven itself as a community which sets goals and reaches them! The most compelling evidence now stands two stories high in the middle of our campus—our new Middle School facility, which is now filled with students and faculty.

We could not have reached this goal, however, without the vision, dedication and support of many people. In 1988, the Board of Trustees adopted a Strategic Plan which subsequently led to an 18-month study, called OES/21, which involved a large portion of the OES community in designing a plan to accomplish the goals and objectives of the Strategic Plan. Out of this study came the campus Master Plan for new and renovated facilities.

Among the components of the new Master Plan was the construction of the new Middle School and subsequent renovation of Bishop Dagwell Hall (BDH), the former Middle School building into a multi-purpose fine arts facility. The trustees determined that the new Middle School was the lynchpin of the entire Master Plan, which also includes renovation of the Upper School and construction of a performing arts center.

In early 1995, the fundraising campaign was launched in a very quiet way, and by fall of that year almost \$2 million had been raised! Additionally, a \$1 million challenge grant from the Meyer Memorial Trust and a \$100,000 grant from the

Collins Foundation were key gifts which pushed us closer to our goal. This past spring and summer saw a surge of gifts and donations from the OES community, and we reached our goal of \$4.6 million for both the Middle School and the BDH renovations. On October 29, 1996, the Middle School, called Meyer Hall in honor of the Meyer Memorial Trust, was officially opened and dedicated.

There are many people to thank for this amazing effort, not the least of which are the numerous volunteers who helped in so many ways. Rocky Dixon and Tony Adams ably chaired the hard-working and very successful major gifts committee. Parents Kip and Sheryl Acheson and John and Priscilla Longfield were extraordinary chairs of fundraising among our parent community, and several parents had neighborhood gatherings which served to educate fellow OES families about the need for a new Middle School. Staff led by Peter Stevens and Charyl Cathey provided leadership and support, and Sue Nicol and her development group were enthusiastic, tireless contributors to the campaign. Ultimately, of course, the hundreds of people who made such generous gifts to the Middle School campaign are to be thanked for their support, because without them we would not have reached this milestone. A complete list of all donors to the Middle School and BDH arts renovation is included in this *OES Belltower*.

I am happy to say that we now have another milestone ahead: Following the renovation of Bishop Dagwell Hall, which has commenced as we go to print with this issue of *The OES Belltower*, we will begin to phase into plans for the renovation of our Upper School. Another exciting challenge for the OES community! Let's keep the momentum building to take OES to a new level as we approach the 21st Century.

It has been an honor to serve as the Chair of the Campaign Steering Committee over the past two years, and inspiring to see the OES community come together to build our new Middle School. I thank you for your generous support.

Sincerely yours,

Middle School
Campaign Chair

Campaign Steering Committee Members

Peter Bechen,
Campaign Chair

Tony Adams,
Major Gifts Co-Chair

Rocky Dixon,
Major Gifts Co-Chair

Christopher &
Sheryl Acheson,
*Parent Committee
Co-Chairs*

John and
Priscilla Longfield,
*Parent Committee
Co-Chairs*

Dick Alexander

Julie Drinkward

Wayne Drinkward

Paul Farago

Henry Hewitt

Pat Karamanos

Elisabeth Lyon

David Munro

Paul Schlesinger '70

John von Schlegell

Beth Warner



Members of the Campaign Steering Committee break from a meeting in the Charlton Room to pose in front of the rising structure. (Left to right: John Longfield, Henry Hewitt, John von Schlegell, Rocky Dixon, Peter Bechen, and David Munro.)

The Parent Campaign Committee

Throughout spring 1996, the Parent Campaign Committee hosted neighborhood parties to showcase the plans for the Middle School and raise interest in the Master Plan. Thank you to our hosts for opening their homes.

Nancy & Richard Chapman
Sharon & Henry Hewitt
Diane & Greg Morgan
Lon & Marcia Peters
Susan & Tom Robinson
David & Nancy TenHulzen
Anne & Ned Thanhouser
Laurie & Peter Turney

A special thank you to our callers, who made phone calls on behalf of the Campaign.

Faye E. Pepin
Janice Harwood
Jill Welsh
Jim Hibbs
Karen Janoff
Margaret Kushner
Tatiana Moller-Lawson
Anne Coulter
Lynn Papworth
Kami Fraley
Joe Opsahl
Laurie Turney
Barbara Durrett



Campaign Chair Peter Bechen presents a small gift of appreciation to Parent Co-Chairs John and Priscilla Longfield.

Donors to the OES Middle School and Bishop Dagwell Hall Arts Renovation

Thank you to all the donors who made it possible for us to reach our goal of \$4.6 million for Phase I of the Master Plan. Your generosity was instrumental to our success.

Anonymous
Christopher and Sheryl Acheson
Jennifer Achilles '87

Peter and Missy Bechen
Donna Beemer
William and Elizabeth Belgard
Rob and Pam Bell
Charles G. Bellville and Ellie Tatum
Charles and Catherine Bergman
Ben and Jean Berman
Bill and Kathleen Bevill
Narjala and Shanda Bhasker
William Bishop
Jim and Linda Blinkhorn
Debra A. Bodio
Yan and Natalya Borodovsky
James and Beverly Bow
Marty and Kay Brantley
Jean and Kathy Brault
Linda and Mike Brumfield
Harry Bruss
Elia Bubenik '43 JC
Benjamin and Jean Bullwinkle '37
in memory of Ruth Rose Richardson
Joseph and Sharon Cade
Leonard and Virginia Cain
Norene Calkins
Tom and Jackie Calkins
Cliff and Sally Canepa
John Capen
Leslan Carlson
Cheryl and Mike Carrier
Anne and Richard Cass
Robert and Janice Cassidy
Joseph Cenicerros and Charyl Cathey
Don and Brenda Chambers

Peter and Susan Champion
Ding and Patsy Chan
Richard and Nancy Chapman
David Chariton
William D. and Brenda L. Charpentier
Diana Chenoweth
Kevin Cheung and Grace Tam
Rhonda and Geoff Chew '78
Chieh-Hung Chiang and Chou Mei-Lin Chiang
Corbet and Myra Clark
Donna Cody
Dennis and Gayle Collins
The Collins Foundation
David Colton
Christine Cooper
Vince and Louise Corbin
Scott and Amy Corris
Karen Corsini
William and Elaine Corwin
John and Anne Coulter
The Very Rev. C. Roy Coulter
Eric Cullander and Cristin Babcock
Beth Ann Johnson Damuth '28
William Davenport and Janet Maurer
Peter and Mary Davidson
June DeBlasio '31
Jo de Bruin
Theo de Bruin
Cameron Shand Denney
Chris and Cindi Devich
Lori Diaz
Linda and Nate Dickinson
Harriett Dixon
Rocky Dixon
Wesley and Suzanne Dixon
Kathleen Dodds
Jennifer Doncan-Pitluck
Steve and Tina Donovan
Cynthia K. Doran
Martha Dorrell '73
in memory of Ruth Rose Richardson
Nancy Doulis
Ulla and John Drell
Alyce Drescher
Cecil and Sally Drinkward
Wayne and Julie Drinkward
Mr. and Mrs. Cornelius R. Duffie
Betty Lou Dunlop '38 JC
Nancy R. Dunn
Barbara and Taylor Durrett
Jack Durrett
Robert Durst
Guss and Sally Dussin
Norman and Sharon Eder
Lou, Marna, and Jordan Elliott



Parent Co-Chairs Kip and Sheryl Acheson tell fellow parents about the Middle School plans at one of the numerous neighborhood parent parties.

Todd Stucky
Craig Murphy
Cindy Bambam
Karen Grauert

James and Jane Adams
The Adams Foundation
Daryl and Carole Adamson
Aftab and Rehana Ahmad
Richard and Carilyn Alexander
Mary Alfonte '43
Philip Allen and Babette Faris
Gretchen Amann
Bob and Kathleen Ames
Lillian Austin '35
Dorothy Baker
Richard and Cindy Bambam
Keith and Sharon Barnes



Superintendent Scotty Forsythe, Plant Manager Jon von Behren, and Chief Financial Officer Gary Pope evaluate the site of the new Middle School.

Chelsea Emery '87
 Woody and Annie English
 Steven W. and Nancy C. Eyer
 Paul Farago and Susan Thayer
 The Farago Foundation
 Charles Farrell
 David and Kendra Farris
 Helen Felker '31
 First Interstate Bank
 Charitable Foundation
 Jerry and Sally Fish
 Dr. and Mrs. Bruce D. Fiske
 Carol F. Floten
 James Foo Che Fuk
 The Edward E. Ford Foundation
 Brian Foulkes and Fernanda D'Agostino
 Joan M. Foy
 Brad and Kami Fraley
 Pat and John Freeman
 Eric and Jan Friedman
 Pam and Norm Frink '70
 Helen J. Frye
 Carol Fuller
 Paul and Sarah Gary



Excitement about the new building started early on in the project.

Mindy Gavette
 Richard and Janet Geary
 Kristine Gebbie
 Raymond and Micheline Ghattas
 John and Donna Ghorso
 Sean and Debbie Gilronan
 Daniel and Linda Gipe
 Mr. and Mrs. Dwaine Gipe
 Richard M. and Barbara B. Glick
 Stuart and Gail Goossen
 Tom and Joyce Gordon
 Alex and Karen Grauert
 Sue and Richard Graves
 Harold Gray, Sr.
 Harold K. Gray
 Joel Gray
 Kathryn Gray
 Joan Green '44
 Suzanne and Bob Greenberg
 Clarence and Myrtle Rae Greenwood
 Bob and Cherie Gregg
 Steve and Kris Gregg
 Kent and JoAnne Grewe
 Scott and Sarah Grewe
 Mr. and Mrs. George Hall Grimes
 Margaret Groening '79
 P. Campbell Groner and Nancy Cowgill
 Robert and Jennifer Black Groves
 Sarah Gunderson
 Steve and Amy Haessler
 Bonnie Dunbar Hahn '49
 Charles and Gwen Hahn
 Bob and Kelly Hale
 James M. Harder

Mrs. U.S. Harkson '20
in memory of Phyllis Henningsen Richardson, '26
 Chip and Molly Harris
 Brian and Janice Harwood
 Jeri and Sandy Haskins
 Betty Lou Hatcher
 Dan Hatton
 Nikki Hatton
 Kohel Haver and Mary Michael
 Maggie and Fritz Hayes
 Carla Heckrodt & Julie Hallenbeck
 Betty Hedberg
 Delbert and Rosa Hemphill
 Tom and Judi Henkle
 Barbara and Jim Herbold
 Mr. and Mrs. David M. Herman
 Henry and Sharon Hewitt
 Michael Heyn and
 Suvira Chaturvedi-Heyn
 James and Carol Hibbs
 Walter and Dorothy Higgins
 Charmian Hilleary '42
 Gary and Ericka Hoffman
 Gerald and Catherine Hoffman
 Mary B. Hoffman '31
 Thomas N. and Rebecca A. Holder
 Kevin Thomas Holliday '93
 Anne Holt
 James Holtz
 The Rev. Lucy Houser and
 Doug Houser
 Lyall and Vicki Howell
 Ed and Aurelia Hunt
 Hoi and Yen Huynh
 Ginger Iles
 Randy and Jeane Iles
 Fred and Cinda Ing
 John and Jill Inskoop
 The Ralph and Adolf Jacobs Foundation
 Peter and Jan Jacobsen
 Dick and Mary Jaffe
 Alan and Suzanne James
 Karen and Ken Janoff
 Pat and Judy Jensen
 Sue Jensen
 Eileen and David Johnson
 Samuel S. Johnson Foundation
 Clarice Johnston and Tina Enberg
 Katherine Jones '45 JC
 Michael and Darlene Kaempf
 Kathy Karalotias '66



The early stages of the excavation for the new Middle School, fall 1995.

J. "Sam" and Pat Karamanos
 Judy Kauffman '60
 Richard and Ruth Keller
 Estelle M. Kelley '78 and
 Stephen K. Bullinger
 Chuck and Trish Kellogg
 Paul Keown and Clyt'e Speidel
 Katharine Kimball
 Robert and Mary Catherine King
 Don and Alice Kinzer
 Helen Kirschner '85
 Mr. and Mrs. Peter T. Kirschner
 Jan and Chris Kitchel
 Klaus and Sharleen Kleber
 Susan W. Knight
 Milton M. Kokubun and Wen-lin Wang
 Paul and Lynnsy Kollar
 Suen-Kow and Hazel Koo
 Curtis and Mariann Koop
 John P. and Helen E. Kowolik
 Wally and Cathy Krieger
 The Kuni Family
 Wayne and Joan Kuni
 Ed and Margaret Kushner
 The Rt. Rev. Robert Ladehoff
 Robert and Mary Laird
 Greg and Diane Landers
 Terry and Wendy Lane
 David and Jeanette Larson
 Sue Larson
 Constance Leonard
 Wesley Lewis
 Liza Lilley '74
 Mike and Mildred Lillpop
 Helen L. Linster
 Gil and Jackie Lipshutz
 Surapon and Linda Lisahapanya
 C. Allen and Sherry Logan
 Kate Loggan and Warren Hirsch
 John and Priscilla Longfield
 David Lowell
 Darele and Thelma Lowry
 David and Jacquie Lukens
 Judy Lynch
 Matthew Lyon and Patricia Timberlake
 Peter and Elisabeth Lyon
 Alec and Laurie King Macmillan
 Mai-Lill Magi
 James A. and Fannie E. Malarkey
 Foundation
 Bill ('67) and Cindi Marshall
 Robert and Abigail Marshall

Mason and Associates
 Bob and Pam Matheson
 Atsuko Matsuyama
 Robert and Anna Maurer
 May Company Department Stores
 Robin and Michael McArthur-Phillips
 Andrew and Nancy McCann
 Jack McCann, Jr. '84
 Katherine McCoy
 McCrea Foundation
 Capt. J.M. McDowell
 Sean F. McEnroe
 Thomas McGuirk and Cammie Brim
 Sarah McNary
 Karen and Hillary Mefferd
 Mentor Graphics Foundation
 Miles and Libby Merwin
 William and Mary Meyer
 Meyer Memorial Trust
 Christina S. Meyerhoff
 James A. Miller and Laurie M. Hesla
 Matthew Miller
 Ted Miller and Daisy Housel-Miller
 Bill and P.J. Million-Sears
 Mr. and Mrs. Steven Mitchell
 Tatiana Moller-Lawson
 Lilly Moore
 Mickey Morey and Leslie Mackenzie
 Chris and Linda Morgan
 Greg and Diane Morgan
 John and Lynne Morrison
 The Rev. Robert Morrison
 Dr. and Mrs. Charles Morrow
 Michael Moser and Barbara Ports
 David and Anne Munro
 Craig Murphy and Julie Frantz
 Kenneth E. Murphy
 Virginia Murphy
 Karen Murray



A step further: the Middle School foundation is laid.

Mrs. Mary H. Naab
 Frank and Kathryn Nance
 Kathy Narramore
 Carolyn Neighbor
 John Neupert
 Margaret Newbegin '26
 Scott and Sue Nicol
 Kenneth Noack, Jr. '73
 Chris and Mary Nogeire
 The Rev. Stephen Norcross
 Paul E. Norman and Sandra S. Miles
 Northwestern Mutual Life
 Ingolf and Peggy Noto
 Jack and Cathy O'Brien
 Paul and Mary Oldshue
 Joseph E. and Zuzana Opsahl
 Chet and Wendy Orloff
 Debi and Steve Owen
 John and Kathryn Pace
 Catherine Riffe and Thomas Page
 James Palmer, Jr.
 Philip and Lynne Papworth

Kirk and Jill Parker
 Chavalit and Boksoon Pattamanuch
 Faye E. and Zachary Pepin
 Mark and Rosanne Perry
 Judy Person
 Lon and Marcia Peters
 Ken and Judy Pinkerton
 Christopher and Kelley Platt
 Jay and Debra Platt
 Johannes H. and Atsumi Polstra
 Richard and Victoria Ponting
 Terry and Mei-Lin Poon
 Gary Pope
 Frank and Carol Powers
 David Pratt
 Ellsworth and Elenora Purdy
 Dr. and Mrs. James S. Putnam
 Maty and Nasrin Rahatzad
 Cynthia Coats Railton '53
 Charles and Noreen Reali
 David and Suzanne Regan
 Lee Ann Rennick '78
 Charles and Christina Reynolds
 Rebecca Reynolds '67
 Jeff and Kathryn Rippey
 Joe and Maggie Robertson
 Tom and Susan Robinson
 Harvey and Miriam Rogers
 Mary and Al Rollins
 Mark Rosenberg and Ilene Safyan
 Daniel Rosenhouse and
 Pamela Waldman
 David H. Ross, Lee C. Olsen, Joren E.
 and Britta E. Ross
 Scott and Susan Russell

Judy and David Schiff
 Mrs. Bernice W. Schlesinger
 Paul Schlesinger '70
 Jack and Mary Schunk
 Karen and Phil Seder
 Dr. Jonny and Mrs. Nanny Seemann
 Brian and Tina Shaffer
 Brett and Julie Sheppard
 Shinzaburo and Keiko Shigematsu
 Joel and Sandra Shilling
 Alice Simpson
 K. Paul and Linda Smith
 Pat and Phil Smith
 Wayne and Diane Somers
 Chai and Nuchanart Sophonpanich
 Carla A. Sosanya
 Katherine Sotka
 Adrienne Souther
 Drs. Bill and Barbara Spears
 Robert E. and Helen L. Spiker
 Paula Spooner and Terry Hansen
 John and Susan Spring
 Odo and Marie Stade
 Bonnie Stanke
 Mr. and Mrs. Douglas H. Stearns
 Brenda and Ed Stevens '76
 Peter and Hope Stevens
 Mr. and Mrs. William T.C. Stevens
 Dale and Carol Stewart
 Linda Stewart
 Peter Stott and Julie Neupert Stott
 Brigitte R.D. Stout
 Doreen Plympton Strong '33
 The Stucky Family
 Jeff and Kathy Sunshine

Veerayudh Suppipat and
 Taparut Boonthanaik
 Elizabeth A. Swindells '34
 Olga Talley
 Steve and Meri Taylor
 Mrs. William Tegart
 David, Nancy and Nick TenHulzen
 Ned and Anne Thanouser
 Richard and Elizabeth Thoresen
 Virginia E. Thorsen '37 JC
 Becky Jo Tooley
 Melba Torkelson '45
 Matti and Najla Totonchy
 Peter and Michelle Trumbo
 The Rose E. Tucker Charitable Trust
 Peter and Laurie Turney
 The UPS Foundation
 US Bancorp
 Kristine M. Van Auken
 Kris and Karen Van Hatcher
 Phil VanderWeele and Joan Snyder
 Barbara and Glenn Vanselow
 Jon and Barbara von Behren
 John and Frances von Schlegell
 Pamela Vohnson and David Streight
 Hans and Gisela Walitzki
 Elizabeth Wang '86
 Dr. and Mrs. Edward E. Ward
 The Warinner Family
 Beth and Bob Warner
 Mark and Martha Warrington
 James Waskey
 Tyrone and Bonnie Wei
 Shelley Weiller
 Lucretia and Jonathon Wells
 Ted Welsh
 Doug and Retha Wetter
 Doug and Gwen Whitmore
 Paul and Diane Whitney
 Robert and Stephanie Wight
 Steve and Patty Williams
 Richard Winningstad
 Marie Winston

Allen and Rebecca Wirfs-Brock
 Jeff and Lynn Wolfstone
 Harriett Workman
 Leslie and Mark Workman '69
 LeeAnne and Theodore Wrenn III
 Maryann Long Wyss '39 JC
 Masatoshi and Susan Yamanaka
in honor of Eileen Preston
 Cherie Yokota
 Ian and Kazzie Young
 Jonathan and Pearl Yu
 Steven and Annette Zack
 Milton and Jean Zell
 Harvey and Louisa Zendt
 William and Rhoda Zobrist '41 & '43 JC
 Carol Zosel and Charles Harper



Richard and Lynne Sadler
 SAFECO
 Hiroshi and Masami Saitoh
 John and Trudy Samples
 Geraldine Hanny Sargent '35
 Michael and Pamela Schaeffer
 Debby Schaufler
 Robert and Jill Scheer



During the final stages of construction, fall, 1996.

M A K I N G A

Difference

WITH A NEW MIDDLE SCHOOL

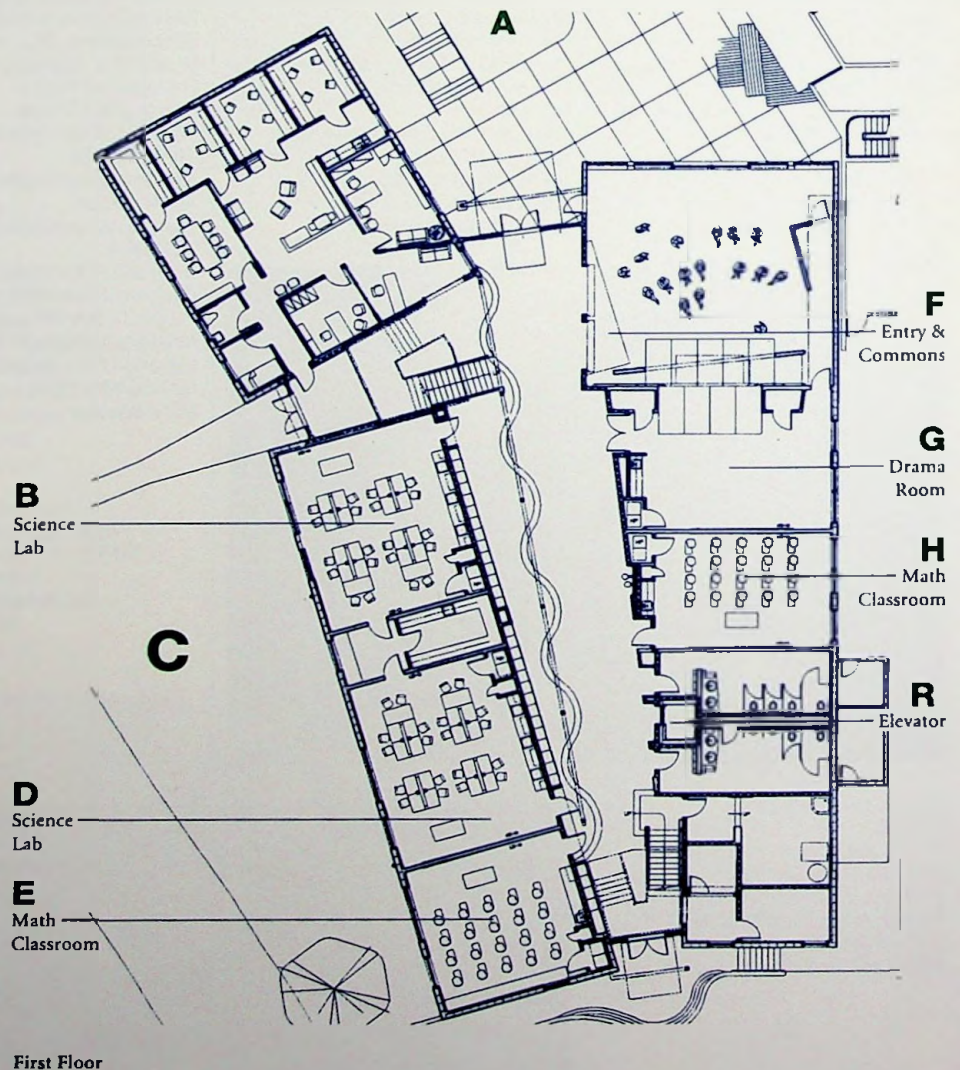
With Deep Appreciation
And Gratitude
Oregon Episcopal School
Dedicates This Building

Meyer Hall

To The Philanthropic Vision
Of The Meyer Memorial Trust
Which So Honors The Legacy
of Mr. Fred G. Meyer
By Promoting The Spirit
Of Educational Excellence

During the Campaign for the New Middle School, a number of generous donors chose to take advantage of several named gift opportunities. We are pleased to honor these donors by naming the following facilities in our new building in their honor.

- A Sophonpanich Courtyard
- B Pauling Science Lab
- C Drinkward Science Department
- D Watson-Crick Science Lab
- E Charyl Cathey Room

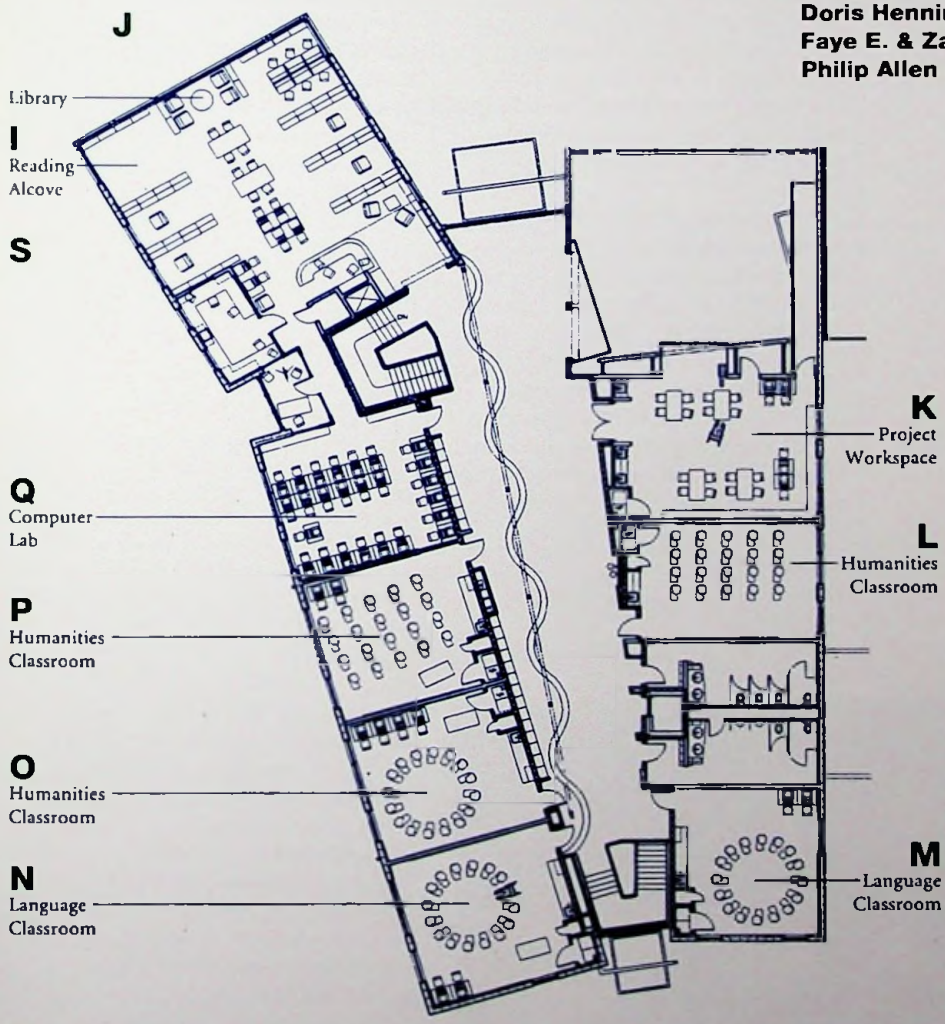


- F Endeavour Commons**
- G Harold & Alice Lineberger Room**
- H Clarence Alexander Room**
- I Kelley-Fletcher Reading Alcove**
- J Bechen Library**

- K Carl & Mary Reynolds Room**
- L Sister Waldine Lucia Room**
- M Searle Room**
- N Peter W. Stevens Room**
- O Rellalee G. Stott Room**
- P Daphne Room**
- Q Purdy Computer Lab**

- R Accessibility Features Generously Donated by:**
Richard & Nancy Chapman
The Kuni Family
Sandy & Jeri Haskins
Liza Lilley '74
Joe & Maggie Robertson

- S The following donors made generous contributions to the new Middle School Library:**
Kay & Marty Brantley
Yan & Natalya Borodovsky
David, Nancy, & Nick TenHulzen
Thomas & Rebecca Holder
Julie, Brett, Scott, & Paige Sheppard
The Warinner Family
Jerry & Sally Fish
Doris Henningsen Harkson '20
Faye E. & Zachary Pepin
Philip Allen & Babette Faris



Second Floor

Alumni Association President's Corner

The school year is off and running! And what a great year this will be! As future alumni look back on this year they will remember a new Middle School building which has been constructed with the help of numerous members of our community.

We will also remember the beginning of a new era under the leadership of our new Headmaster, Mr. Charlie Bergman. Charlie was formally installed on September 10 in the Parish of St. John the Baptist on the OES campus. During the ceremony your Alumni Association presented him with a framed photo



▲ Jack McCann, Jr. '84, Alumni Association President

of the original site of St. Helens Hall. We hope this will remind Charlie of the rich history of our school, which started with St. Helens Hall in 1869. We also presented him with an OES Alumni Directory which we hope will help him get to know us. Faculty, staff, parents, students and alumni are all thrilled that the Board of Trustees and the headmaster search committee were able to find such an well-qualified and exemplary headmaster. Charlie's guidance and vision shall lead our community well into the 21st century.

Alumni Association events are off to a flying start! At the beginning of the year we held our fifth annual Alumni Soccer Tournament. Although your alumni team fought hard to win they were beaten by a team made up of future alumni—the current boy's varsity soccer team! It's never too early to start practicing for next year!

In October we kicked off the OES FUND campaign under the leadership of Liza Lilley '74, past Alumni Association President and current Trustee member. This year's OES FUND theme is *Raising Community Spirit*, and the goals of the campaign are to raise \$380,000 and to increase participation. All donations to the OES FUND go directly to the operating budget of our school.

The FUND allows for a diverse academic program while helping to keep tuition at a reasonable level. Without your continued support of the FUND, many students might not be able to enjoy the same level of education that all of us had. Please show your love for the School by making a generous gift.

OES needs YOU! As a student at the School you played a vital role in its history, and as an alum you play just as vital a role in its future! I strongly encourage you to get involved—the benefits you will receive are as immeasurable as is your love for your alma mater.

The OES Alumni Board would be honored to have you back on campus for lunch and a tour. Come back and reminisce, visit our beautiful campus and see the changes, and reacquaint yourself with our outstanding community. Please call the Alumni Office at 768-3153 to arrange a date, and we'll look forward to seeing you.



◀ Among the many gifts given to OES' new headmaster at his installation was a photo of the original site of the School where it was established in 1869, presented by Alumni Association President Jack McCann Jr. '84.

Class Notes

1930

Ruth Simmonds Tunturi '34 reports that she still writes for her parish newsletter after having served as society editor for the *Oregon Journal* during the 40s and 50s. Ruth, who is widowed, is the sister of the late **Mary Simmonds Musgrove '27**.

1940

Marjorie Besson Fintz '40 reports that she is spending her time gardening, exercising her dog, visiting her grandchildren, and taking in the great California sunshine with her husband in their Los Angeles home.

Patricia Kendall Apperson '48 JC continues to be very busy: she will be an alternate deputy for the General Convention of the Diocese of Olympia in 1997, is the Diocese's church periodical director, is entering her sixth year as a volunteer for Mt. Simmons' 3rd grade class in Tumwater, WA and as master gardener for Mother Joseph's Care Center at St. Peters Hospital, and continues to be a member of the Symphony Guild and the Seattle Women's University Club. "I could add a few more but feel this is enough!" Pat jokes.

1950

Paula Barner Smith '52 spent March and April of 1996 in England with her daughter, Valerie, and her family. Paula reports that they attended the Oxford University graduation ceremony where Valerie received her doctorate in biochemistry. "Latin scholars would love it," Paula writes. "Nothing but Latin in the centuries-old ceremony!"

Meridel Prideaux '59 was recently appointed to the National Board of Directors for Young Audiences. She was already President of the Oregon/WA Chapter of Young Audiences, and is also busy serving on the boards of the American Advertising Museum and the Portland Oregon Visitors Association (POVA).

1960

Lillian Eaton Kusiek '65 reports that she is a teacher at South Medford High School, teaching a class entitled "Family Health," which incorporates the subjects of health, home economics, and counseling.

Natalie Giustina Newlove '65 writes that she and her family have left San Francisco after living there for 24 years to return "home" to Eugene, OR, and says "it's so good to be back in the Northwest." Their nine-year-old son Brandon keeps them busy with baseball and basketball, but Natalie still plays golf whenever she has the time.

Georgiana Calley Antonelli '66 now lives in Hong Kong; she accompanied her husband Michael when he received an international assignment with IBM to Asia. She writes that she enjoys her leisure time activities which include Chinese history and antiques. She's currently active in American Women's Association of Hong Kong, is treasurer of the League of Women Voters Election Central, and volunteers at a local orphanage in Hong Kong. The Antonellis have two children, Nicole, 25, who is married and lives in Baltimore and Michael Sean, 22, in Chicago.

Since becoming a CPA, **Sheila Maley Bates '66** has worked during the tax season in Portland; in her off time she's traveled to Egypt, Guatemala, Southeast Asia, Europe, India among other places. Other recent travels have included Mexico, Vietnam and Burma; she looks forward to visiting Bulgaria, Romania, the Ukraine and Turkey. Her hobbies include reading and "shopping around the world."

Kim Moyer Beck '66 is pursuing a long-awaited goal—she's a student at Pacific University in Forest Grove, OR and will receive a BA in psychology in 1997. She has also enjoyed traveling abroad to England in '88 and in '94, to France in '95, and to Israel in '95. Kim and her husband John have two children, Charles, 18, who just graduated from high school in June, and Rachel, 15.

Working for the Cleveland Board of Education as a specific learning disabilities tutor has kept **Susan Marston Bishop '66** busy. She received her master's degree in education in learning disabilities from Cleveland State University in 1995. Susan and her husband Peter adopted a son five years ago; Matthew Allen is now 12. Her hobbies include golf, swimming, aerobics, weight training, and reading.

Gardening and reading are favorite leisure activities for **Diana Beebe Buchanan '65**. Diana is a self-employed reading tutor. She and her husband Bryce are parents of Courtney, 23, and Emily, 17.

Jayne Lilles Hill '66 reports that she is still teaching 7th grade English and social studies in Salem, OR. Her husband Jim is a battalion chief with the Salem Fire Department. Their son Andy is a sophomore at the University of Washington and daughter Megan is a senior in high school. Jayne attended her 30th reunion and enjoyed visiting with classmates.

Michele Cooke Ludiker '66 works for the Oregon Health Division. She writes that she enjoys using collage for greeting cards, cardbooks, and bookmarks. Completing her family are son Steven, 27, and grandchildren Cody, 6½, and Aaron, 4½.

Golfing and running are current leisure activities for **Maryanne Bailey Nosler '66**. She also spends time at the Tournament Golf Foundation and at PGA West in California. Her family includes husband Michael, two children, Kisa, 27 and Jamie, 23 and three grandchildren—Taylor, 4, Morgan, 2 and Nicole, 1.

Nora Brydges McMillan '68 has been working as a women's health care nurse practitioner in Anacortes, WA. She reports that her two sons are doing well, and her husband has "joined the computer generation whole-heartedly."

1970

Alexandra Dussin Cook '70 is a homemaker and volunteer in the Lake Oswego School System. She is the Children's Director for the Portland West Class of Community Bible Study, and is also active in music and children ministries at Mt. Park Church. Her husband, David, is the senior VP of OSF International, and they have two sons, 12-year-old Kevin and Carson, who is 9.

Peter Purdy '72 and his wife Danielle welcomed a new Purdy, Lucas Brand, into the world on June 1, 1996. The family lives in Port Townsend, WA.

A Manhattan family has grown by one: **Brent Erensel '74** and his wife Nina added Esme to the family on August 5. Their sons, Pearce and Hunter, are 4½ and 2 years old. Brent recently made a trip to Costa Rica, where he enjoyed some successful tarpon fishing.

1980

Jennifer Trudeau '84 reports that she survived the Tillamook floods at Tillamook County General Hospital, where she is a registered nurse. Jennifer is currently living in Netarts, and will be getting married in September to Steven Graylands.

News from New Jersey:

Todd Kissam '84 was ordained to the priesthood during May in Trenton, NJ, and is still working on the final stages of his MA degree in theology. Todd is also in touch with

Diana Smith '84, and reports that she received a MA in public policy this past June.

Laura Sani-Pashak '85 is in the process of completing a MA in library science through Emporia State University, having graduated from the University of Oregon with a major in Asian Studies. Laura married Gregory Pashak in 1989, and they have a 3-year-old son, Jeremy David.

Jason Grover '88 received his juris doctor degree from Seattle University's School of Law in May, and spent this past summer prepping for the Washington Bar Exam. Jason plans to practice law in the Puget Sound area.

Adam Flick '88 works as an acquisitions coordinator for PhotoDisc, a digital stock photography company that sells images via CD-ROM disc products as well as through their online system on the web. "My job is quite challenging," Adam reports. "I am really enjoying myself in this very creative field of work."

Heidi McIsaac Shuford '65
Suntrana@aol.com

Paul Alexander '84
paulalex@worldnet.att.net

James Isaak '85
JISSAK@cfipro.com

Sehar Ahmad '86
ahmas@perkinscoie.com

Magda Akkerman '86
Jakkerma@
vmcsnat2.telecom.com.au

Brian Litzenberger '86
blitzen@umich.edu

Debbie Kennison Rath '86
Kennison@jhudis.dev.jhu.edu

Jennifer Riffe '86
JPRIFFE@aol.com

1990

Anna Martens '91 recently moved to Boulder, CA, to help start up a division of an international health food company for whom she will provide consulting work. Sister **Pernille Martens '89** is attending medical school in Denmark, and **Kirsten Martens '95** is in her sophomore year at Carlton College.

Judy Moon, better known to OES classmates as **Joanne Lau '92**, was recently featured in *Willamette Week*. The newspaper highlighted her music program entitled "Yellow Submarine" which showcases alternative Asian bands, and listed Joanne's top ten favorite records from China and Japan.

Winde Bekins Strachan '86
ibekins@stanwiley.com

Percy Webster '86
jwebster.cnet.com

Theresa Webster '87
Twebster87@aol.com

Justin Akkerman '88
Jakkerma@
vmcsnat2.telecom.com.au

Katherine Eklund '88
keeklund@u.washington.edu

Chia Stockwell '88
cstock@fermat.math.fsu.edu

Steve Bonds '90
sbonds@u.washington.edu

Annika Jensfelt '93, who attended OES as an exchange student from Sweden in 1991, reports that she is now studying architecture at the Royal School of Technology in Stockholm, spending her spare time riding horses and working out in track and field. She is hoping to make a visit back to Portland soon.

Courtney Voelker '95 recently completed a summer internship at the National Institutes of Health (NIH) in Bethesda, MD. Courtney was working in the Department of Virology in the National Institute of Allergy and Infectious Diseases.

Eric Gebbie '94
eng@st-andrew.ac.uk

Courtney Voelker '95
voelker@teleport.com
or
Courtney_Voelker@brown.edu

E-Mail

The Alumni Office has wired itself into the Internet. To help our alumni communicate with one another, we are publishing a list of known e-mail addresses. If you would like to be added to the list or just share news for Class Notes, send a message to Helen Kirschner '85 in the Alumni Office at the following address: alumni@oes.edu

Ian Peterson-Nedry '95

1977-1996

A gifted athlete and poet, Ian graduated from Oregon Episcopal School in 1995 after attending the School for four years. He attended the University of Oregon School of Architecture after graduation. Ian enjoyed music, landscaping and gardening, soccer and track, and his friends and family. OES enjoyed his numerous contributions to the Upper School Art & Literature magazine, *Catch*; one of his poems is printed below.

The Peterson-Nedry family suggests remembrances be made to support one of Ian's favorite causes, by sending contributions to The Wetland Conservancy, Ian Peterson-Nedry Fund, P.O. Box 1195, Tualatin, OR 97062. Ian will be missed by his family, friends, and the OES community.



▲ Ian Peterson-Nedry '95 (middle) with track coaches Joel Gray (right) and Jay Miles (left), in a photo taken just minutes after Ian and his teammates placed first in the 1995 State 1600 meter relay.

This Feelin' The Blues

Lazy slow, sticky summer,
in a bedroom
next to a window fan.
Smoking a cigarette
and leaning against
a chimney,
next to a bed.

B.B. King is singing
some roadside blues,
and I too am knowing
those chains and
thangs.

Bum bum ba dwat dum,
goes the slow sliding
slapping of the bass.
Heartbeat
stoned eyes, hot air
circulation
and betrayal.

Feeling like a sleeve
less tee-shirt,
and shorts, sitting in
a Harlem window
sill, cryin over loss
kind of guy.

In fades the radio,
"I got a cold hearted
wrong doin' woman,
and a sssslave drivin'
boss."

IN MEMORIAM

**Phyllis Henningsen
Richardson '26**
Naples, FL

Betty Allyn May '26
McMinnville, OR

Geraldine Dye Trullinger '27
Portland, OR
August 15, 1996

Jean Broughton Thomas '37
Underwood, WA
June, 1996

Martha Randall Mason '40 JC
Wilsonville, OR
July 14, 1996

Barbara Sherman '46
Friendswood, TX

Anne Thompson Cochran '49
Englewood, CO
June 22, 1996

Ian Peterson-Nedry '95
Newburg, OR
October 2, 1996
Died in an automobile
accident

Dr. Alice Bahrs
Former science teacher at
St. Helens Hall Junior College
Corvallis, OR

Anton Alexander-Skeen
Son of Autumn
Alexander-Skeen '74
Died in an automobile
accident, June 1996
Central Washington

What Ever Happened to These Aspiring Musicians?



▲ Can you identify any of these St. Helens students from the 1950s? If you're the first to call or write the Alumni Office with an answer, you'll win an OES sweatshirt from the Anthill, the School's student store.

I N S I D E !

Show & Tell4

OES Welcomes New Headmaster
Charlie Bergman8

In Touch With OES.....10

The Mustard Seed
Annual Report of Giving15

Alumni Association
President's Letter48

Class Notes49

THE
OES
Belltower

OREGON EPISCOPAL SCHOOL
6300 S.W. Nicol Road
Portland, Oregon 97223

ADDRESS CORRECTION REQUESTED

Non-Profit
Organization
U.S. Postage
PAID
Permit No. 334
Portland, OR

Printed on recycled paper with vegetable-based inks.
Please recycle.