

The Scientist

June 1940

The Scintilla

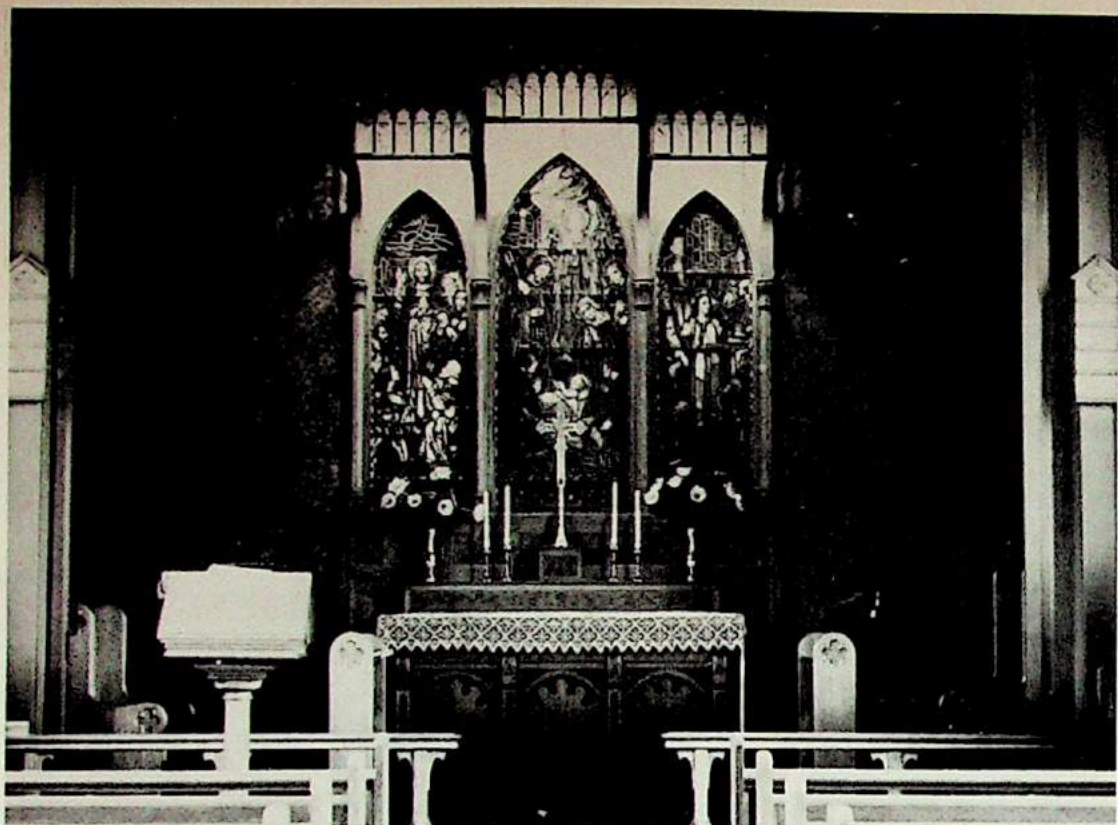
VOLUME VII, 1940

ST. HELEN'S HALL
JUNIOR COLLEGE

Portland, Oregon



GENERAL SUPERINTENDENCE OF
SISTERS OF ST. JOHN BAPTIST



I Thank Thee

I thank Thee for the magic touch of those
Who kindled selfhood to a brighter glow,
Who opened windows that great truths might shine
Into my soul and start my best to grow.

I thank Thee for achieving tendency,
To think, to plan, but best of all to do
The things I plan, that each new plan achieved
May be an upward step to clearer view.

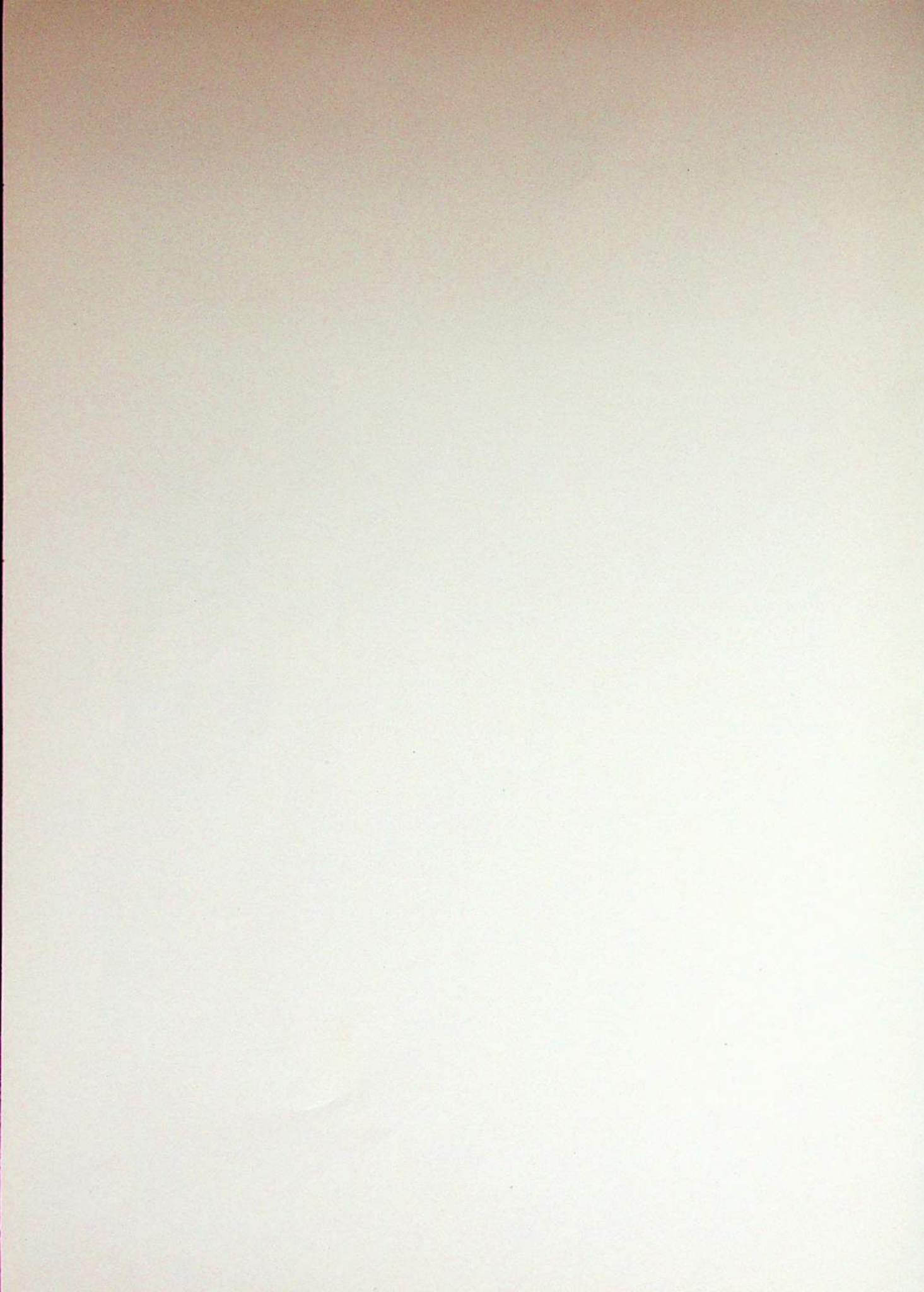
—James L. Hughes.

IN DEDICATION

to the Administration of St. Helen's Hall Junior College for knowledge, ideals, and encouragement so generously and willingly given, we dedicate the Scintilla of 1940. You will illuminate our memories of school, and our lives shall always reflect your influence.

IN ADMIRATION

of the Sisters of the Community of St. John Baptist, whose energy, faith, and perseverance have made possible the advantages we have received. Our admiration has become an inspiration for the future.



College Administration



GERTRUDE HOUK FARISS

Academic Dean



ENA MARSTON

Registrar

To the Graduating Class—

You of the class of 1940 are going into a world shaken to its foundations. It is a world in which the fundamental principles of freedom of speech, worship, and thought are threatened. My highest hope from the past is that during these two years you may have gained some conception of the value of these freedoms and such habits of thinking as will make possible the intelligent utilization of them. My most aspiring hope for the future is that you will help to bring into American life the honesty of purpose, the sincerity of spiritual outlook, the soundness of thinking, and the sanity of judgment which are essential to the existence of democracy.

The privilege of education is an invaluable gift, one which carries with it the obligation upon every student of eliminating from his thinking the tendencies toward racial prejudice, religious intolerance, and political inertia. May the members of this graduating class be among those Americans who apply their every ability to the determined retention of all that is constructive and best in our traditional democracy, who direct their unceasing efforts toward building in accordance with a constantly higher and more idealistic pattern of democratic living.

—GERTRUDE HOUK FARISS.



KATHERINE ARNOLD
French



DR. ALICE BAHRS
Director of Science Department



CAROLYN GORDON BOWERS
Director of Drama Department,
Modern Poetry



IMOGENE ELLIS
Social Science



LENORE IRVINE
Physical Education



ELIZABETH MOUSER
Nursing Subjects



DOROTHY O'DEA
Home Economics, Science Assistant



MARIAN PETTIBONE
Chemistry



KEITH WALLACE
Art



MALCOLM BAUER
Journalism



ESTHER E. BURCH
Sociology



RUTH BRACE
Psychology



LEE BROWN
Clothing



LOUISE DEES
Modeling



ALMA DICKIE
Librarian



MARGUERITE JACKSON
DULLEY
English Composition



ANN HILDENBRANDT
Creative Dancing



MARY HOBSON
Physical Education



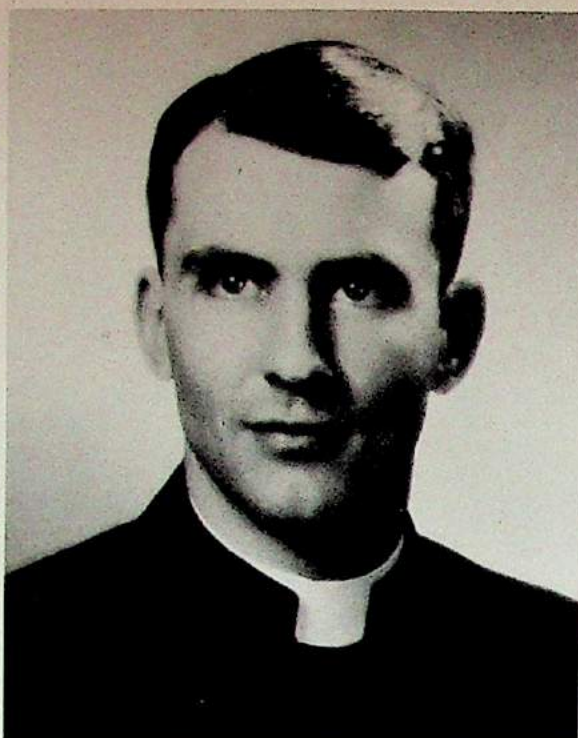
CLARENCE SLOCUM
German



CLORINDA TOPPING
Music Appreciation



RITA YORK
Child Psychology



REV. ARTHUR A. VALL-SPINOSA

Chaplain

THAT YOU MAY LIVE GRACEFULLY . . .

One cannot help but be impressed by the immense amount of literature published today for women and girls on the general topic of what we are pleased to call "graceful living".

It is most strange that while a deliberate attempt is being made, by illustrations and advertisements, to equate graceful living with luxurious living, we must necessarily be impressed, if we think at all, by the vast amount of work and energy necessary to convey that idea. Modeling is a strenuous job, photography and printing are arts, publishing is a large scale business; in a current magazine Mlle. Eva Curie tells how the French designers continue their work in the midst of war.

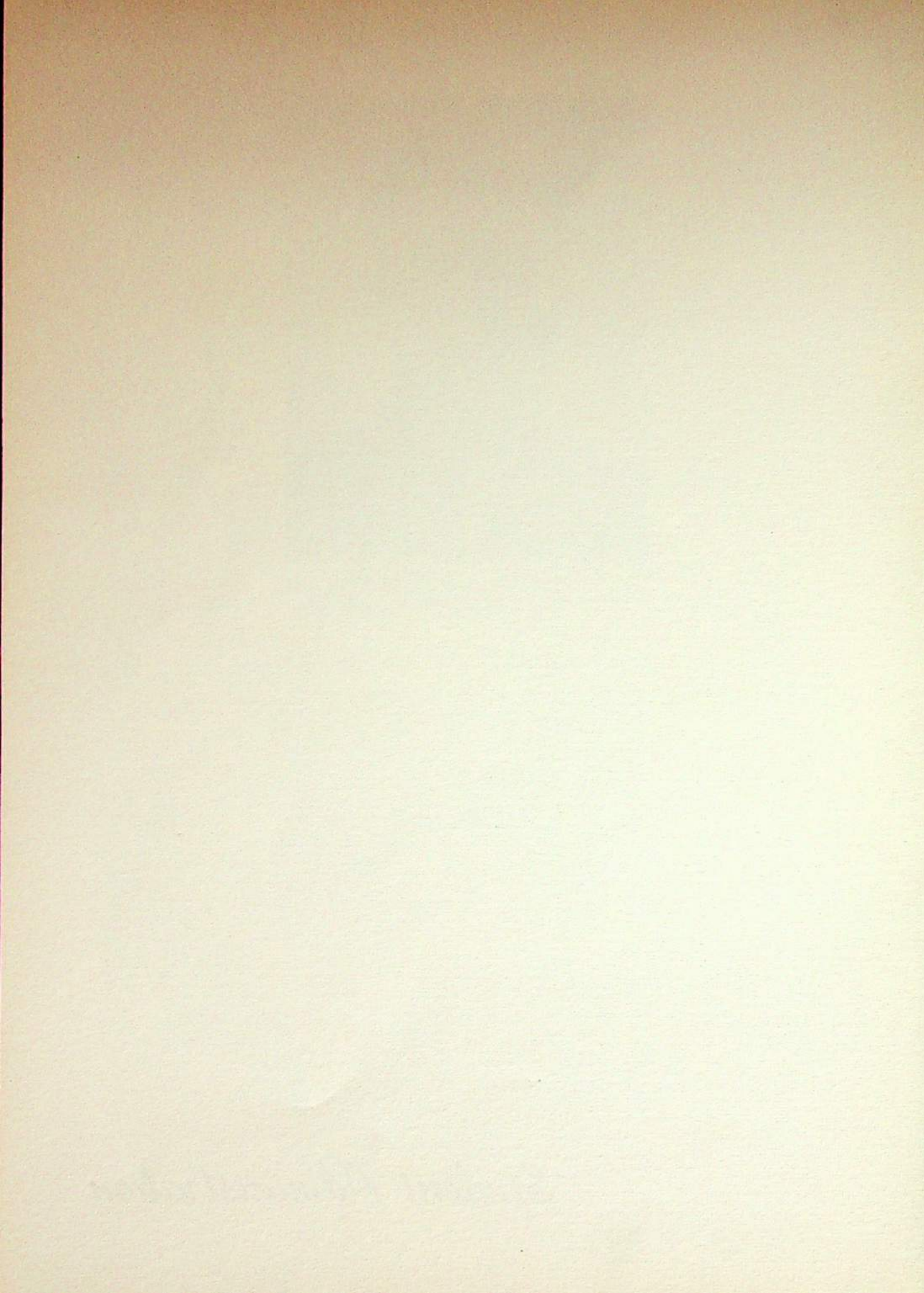
In sum, and simply enough, it is the ideal held by the historical church since time immemorial; namely, that none may achieve a luxurious life, in other words, live gracefully, without a tremendous sacrifice upon the part of someone.

My prayer, that you may live gracefully, is mitigated with a hope that, as you become "as polished corners of the temple", you may be ever mindful of the workmen in the same.

Your life is God's gift to you—live luxuriously. What you do with your life is your gift to God—live gracefully.

ARTHUR A. VALL-SPINOSA.

Student Administration





MARTHA RANDALL
President of the Student Body



MADELINE CHIN
Vice-President



BARBARA MINOR
Secretary



DOROTHY CHALLACOMBE
Treasurer



FRANCES ROBERTSON
Editor, Hall Tree

*Could
you've seen
the best friend
a girl could
have, girls
also if the
best friend
and you
know what
do you know
to her.
Hope you
get that date.
Love,
Frances*



BETTY-JO SHOWN
Sophomore Representative



JEANNE MILLER
Sophomore Representative



JANE DEACON
Freshman Representative



FRANCES CHANEY
Freshman Representative

*To a sweet little school!
Frances Chaney*



BETTY-JO SHOWN
Representative Freshman Girl, 1939
Sophomore Scholarship
Warden of the School Seal



VERA WEST
Sophomore Scholarship



JERRY ALLEN
Sophomore Scholarship



MADELINE CHIN
Winner of Nelson Shield

Sophomore Torchlight Procession

An outstanding event of the college commencement season is the crowning and the enthroning of the most representative undergraduate, chosen by the graduating class to rule the Torchlight Procession and to be warden of the School Seal for the coming year. This honor was presented to Betty-Jo Shown.

The Nelson Shield for outstanding scholarship and cooperation in student affairs was presented to Madeline Chin. This shield is made of the copper from Lord Nelson's Flagship, stamped with the King's cipher, K. R. VII, and bears a facsimile of the Victory and Nelson's motto, "Palmam qui meruit ferat" ("Let him bear the palm who earns it").

Each year an honor scholarship, consisting of half the year's tuition, is awarded to the member of the freshman class who has made the highest scholastic record. This year it was necessary to divide the scholarship among three students, who had made almost identical scholastic records. The scholarship was divided among Jerry Allen, Betty-Jo Shown, and Vera West.



VERA WEST
President of the Sophomore Class



JEANETTE GUNTHER
Vice-President



ESTHER LENON
Secretary



INA TAKEI
Treasurer



JEANNE MILLER
Editor, Scintilla

JUNIOR COLLEGE HONORS

Honor Roll First Semester 1939

Yoshi Yoshizawa	2.8	Betty-Jo Shown	2.6
Jerry Allen	2.6	Vera West	2.6
Jane Deacon	2.5		

Scintilla Awards

Poetry Contribution.....	Peggy Brooke	Campus Candid Picture....	Jean MacKellar
Prose Contribution.....	Barbara Minor	Everglades Candid Picture....	Gene Nelson
Typical Candid Picture..	Frances Robertson	School Candid Picture....	Audra Haffenden

Delta Psi Omega Award

Delta Psi Omega Drama Honorary Award for outstanding service throughout the year "behind-the-scenes", for efficiency, dependability, and cooperation, was presented to Ruth Director, the freshman whom Delta Psi Omega members consider as having contributed most to the dramatic life of the school.

DIRECTOR'S AWARD to a member of the Understudy Club who has contributed most in a specialized field to the dramatic activity of the college. This year the award was presented to Shirley Sievers, costume mistress.

DIRECTOR'S AWARD to a member of Delta Psi Omega who has most selflessly and consistently participated in all dramatic productions throughout the two years of college work, tirelessly working on small details as well as on larger projects, holding only one goal in mind, that of advancing college dramatics. This award goes to Jeanne Miller.

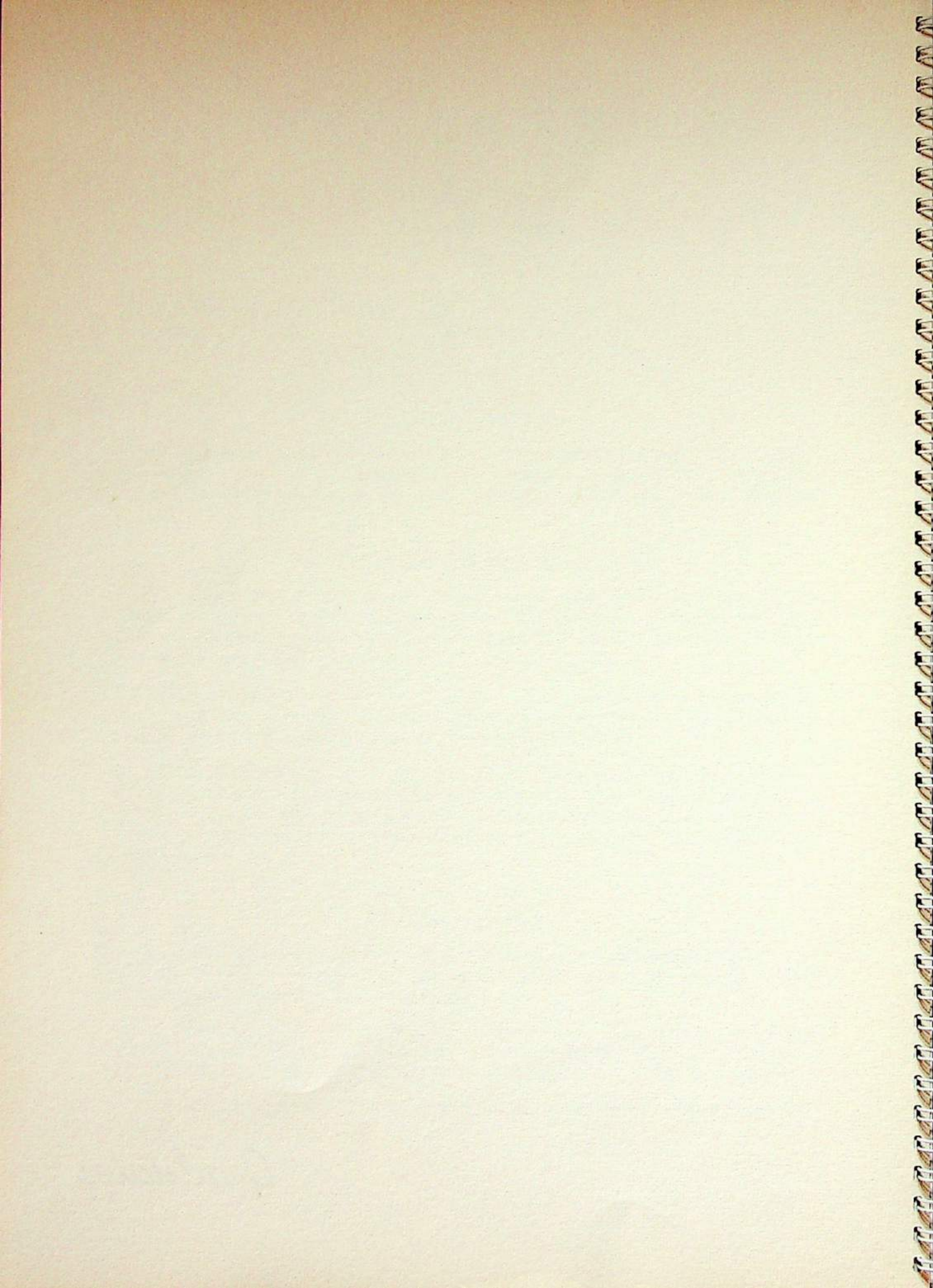
Scholarships

Six scholarships were awarded last spring to members of senior classes of the Portland high schools. These scholarships are granted on a basis of high school scholastic records and a college aptitude test. The winners were:

Marion Beebe.....	Lincoln High School	Muriel Eddy	Franklin High School
Frances Chaney....	Roosevelt High School	Mary Lou Moore..	Washington High School
Jane Deacon.....	Grant High School	Ruth Page.....	Jefferson High School

One scholarship-at-large was awarded to Yoshi Yoshizawa, Milwaukie Union High School.

Graduates



Esther -
I've been a swell
friend & I do hope
you'll be friends in
years to come. Don't
forget to write please.
Love
Billie



LUELLA ADELS



JERRY ALLEN



REIKO AZUMANO



DOROTHY CHALLACOMBE



MADELINE CHIN



IRMA CLARKE



SIDNEY CONNOLLY



BETTY CROSSLEY



DOROTHY DICKS



JEANETTE GUNTHER



ESTHER LENON



PATRICIA LUDWICK



VIVIAN McNAMEE



JEANNE MILLER



BARBARA MINOR



MARTHA RANDALL



EMMABELLE RICHARDS



FRANCES ROBERTSON



BETTY-JO SHOWN



LILLIAN SPAHN



ELEANOR STAEHLI

*Best we have
had was very
magnificent. I hope
to see them
to see them
to see them
I hope you will
be very happy in
your future
career.
Love,
Lillian
Spahn*

*May success be
yours. Eva Marie*



NADINE STEPHENS



EVA MARIE SUSAC



INA TAKEI



VIOLET TEGART



JEAN WEBSTER



VERA WEST

*You are such a
nice person - be
may the best
love
Jean*



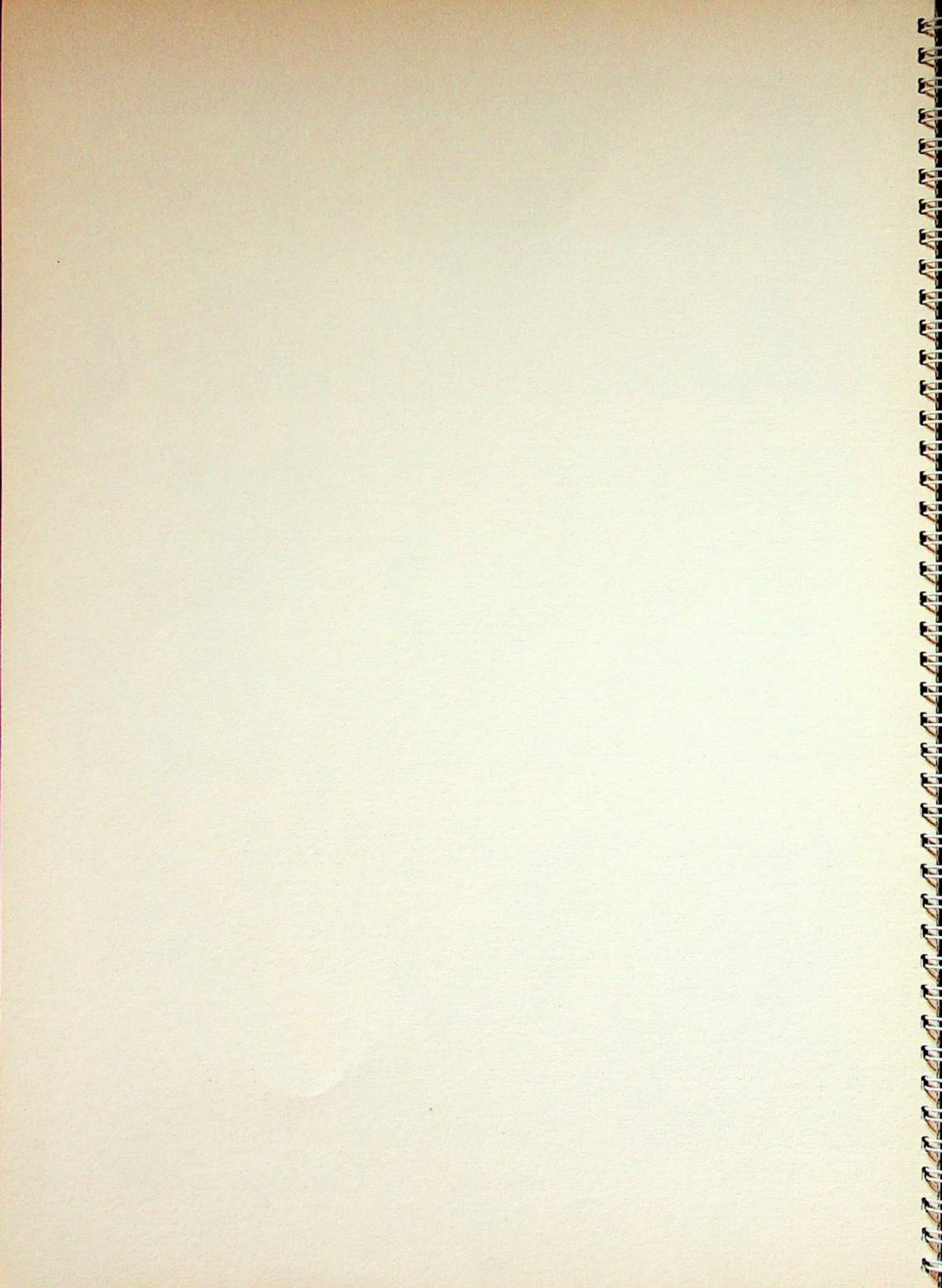
MARY FRANCES WINTLER

*May you attain
the best in life
always. Cathy
Mary Frances*



SELMA ZITZER

College Events





To a sweet
pal who
I'll always
remember.
D. Challoumb

QUEEN DOROTHY I
OF
ST. HELEN'S HALL JUNIOR COLLEGE
MAY CARNIVAL



JESTERS

DORIS STEIN, RUTH HERMITAGE



PRINCESSES

SELMA ZITZER, MARTHA RANDALL,
BETTY-JO SHOWN, MADELINE CHIN.



THE COLLEGE PLAYERS PRESENT
"ALISON'S HOUSE"

By SUSAN GLASPELL
 (By special arrangement with Samuel French)
 PULITZER PRIZE PLAY, 1930

For the second major production of the year, the College Players chose Susan Glaspell's penetrating and sensitive drama based on the life of the great American poet, Emily Dickinson. The play was especially revised by Carolyn Gordon Bowers, director, to meet the needs of the group presenting it.

"Alison's House" unfolds the story of the influence which Alison, the poet, long-dead, exercises over various members of her immediate family. The play creates a new insight into the mind and heart of the poet.

Guest players from the University of Portland were again selected to play the men's roles, this making the second year in which men have participated in the college play.

"Alison's House" marked the first occasion of a Pulitzer Prize play being presented at St. Helen's Hall Junior College.

THE CAST

Director.....Carolyn Gordon Bowers

ANN LESLIE.....Vera West	ELSA STANHOPE.....Dorothy Dicks
JENNIE.....Nadine Stephens	MISS AGATHA.....Jean Webster
LOUISE.....Barbara Minor	MRS. HODGES.....Vivian McNamee
THEODORA STANHOPE.....Selma Zitzer	MR. HODGES.....Richard Clemo
MOTHER STANHOPE.....Jeanne Miller	RICHARD KNOWLES.....George Johnson
EMILY STANHOPE.....Peggy Brooke	
BUSINESS MANAGER.....Elizabeth Arnreiter	STAGE CREW.....Dorothy Calderwood, Lornelle
STAGE MANAGER.....Ruth Director	Kennedy, Patricia Simmons, Jean MacKellar,
PROPERTIES MANAGER.....Gloria Kibbee	Barbara Wuest.
COSTUME MISTRESS.....Shirley Sievers	



STANDING (left to right): Peggy Brooke, Barbara Minor.
 SEATED (left to right): Dorothy Dicks, Jeanne Miller, Vera West, Miss Carolyn Gordon Bowers, Vivian McNamee, Jean Webster, Selma Zitzer.

Delta Psi Omega

President	Vera West	Vice-President	Dorothy Dicks
Secretary-Treasurer	Barbara Minor	Adviser.....	Miss Carolyn Gordon Bowers

In accordance with a program determined early in the year, this national dramatic honorary fraternity has pointed its endeavors toward keeping alive in the college an active interest in the art of the theatre.

The Understudy Club, formed under Delta Psi Omega auspices, has continued to grow under their sponsorship in size and strength until it has assumed almost independent proportions.

Stunt Night, a Delta Psi Omega mid-year project, witnessed a "mellerdrammer" of the old school, "The Diamond in the Rough" or, "Purity Has No Price", with members of the cast indulging in an hilarious Olio after the play for the amusement of the audience. The audience, seated around small tables, had bags of peanuts thrown to them and were served cider in mugs by waitresses (Understudy members) of the gay 90's.

Among other activities of the year Delta Psi Omega sponsored a Mothers' Club meeting in January, doing both the serving and the entertaining. In February four new members were initiated, and five girls were pledged. The ritual was revised prior to winter initiation, and a new ceremonial song written.

The final social project of the year was the annual Awards Tea given at the home of Gertrude Houk Fariss, on Saturday, June 1. At this tea the Delta Psi Omega award of a year's subscription to "Theatre Arts Monthly", given annually to a non-member of the fraternity who has contributed most to the dramatic life of the college, was presented to Ruth Director.



FRONT ROW: Ann Hawkins, Ruth Director, Jane Deacon, Dorothy McBreen.
 SECOND ROW: Dorothy Calderwood, Barbara Wuest, Betty Lou Brugman, Doris Stein, Gloria Kibbee, Lornelle Kennedy.
 THIRD ROW: Jean MacKellar, Beverly Nordean, Shirley Sievers, Ann Reith, Mary Frances Woerner.
 MEMBERS NOT SHOWN: Elizabeth Arnreiter, Eloise Loveridge, Charlotte Mosler, Mary Frances Wintler.

Understudy Club

FALL TERM

President Jane Deacon
 Vice-President Betty Baker
 Secretary-Treasurer Lornelle Kennedy

SPRING TERM

President Ruth Director
 Vice-President Elizabeth Arnreiter
 Secretary Treasurer Charlotte Mosler

Adviser.....Miss Carolyn Gordon Bowers

This club, organized in 1938 by the Delta Psi Omegas as an auxiliary for first-year dramatic students, has now become a major club.

During the past year the Understudies' varied activities have included talks on different aspects of the theatre by either student or guest speakers, managing the backstage details of the Delta Psi Omega performances, the collection of material for a scrapbook, and as the major project the production of a play.

Social events for the year included a box luncheon at Ruth Director's, a dessert during Christmas vacation at the home of Dorothy McBreen, and a luncheon at Lipman and Wolfe's tea room for the presentation of new Understudy pins.



FRONT ROW: Jerry Allen, Mrs. Louise Dees, Betty Irvine.
 SECOND ROW: Pat Ludwick, Robin Oulton, Polly Miller.
 MEMBERS NOT SHOWN: Mary Butler, Madeline Chin, Eleanor Staehli.

Studio Club

President Jerry Allen
 Vice-President Mary Butler

Secretary-Treasurer Pat Ludwick
 Adviser.....Mrs. Louise Dees

Studio, the college art club, started a busy year by making tickets for the Delta Psi Omega Stunt Night. Immediately following this, Christmas cards were hand-blocked and sold by club members.

Field trips during the year were taken to Mrs. Arthur A. Allen's weaving studio, to the Oswego weavers, to Mrs. Louise Dees', and to the Skidmore Art Center with Sandy and Phyllis Meurden.

A luncheon was held at the Oregon Oyster House.

*Don't forget in our year to
include your friend, Mary Lou*



FRONT ROW: Maxine Chu, Sidney Connolly, Muriel Eddy.
SECOND ROW: Mary Lou Moore, Gertrude Kay, Frances Robertson, Dorothy Hermann, Jean MacKellar, Mrs. Lenore Irvine.

Athletic Association

President	Sidney Connolly	Secretary-Treasurer	Muriel Eddy
Vice-President	Gertrude Kay	Advisers.....	Miss Mary Hobson, Mrs. Lenore Irvine

The purpose of the Athletic Association is to promote an interest in sports. Tournaments have been held under the supervision of the Athletic Association. However, the success of the tournaments was due to the chairman of each sport.

Those who were appointed as leaders of the various sports were Mary Lou Moore, volleyball; Frances Robertson, pingpong; Maxine Chu, basketball; Mary Butler, badminton; Dorothy Hermann, tennis; and Jean MacKellar, fencing.

Automatically, each member of the Junior College student body is a member of the Athletic Association. To those members who have excelled in some sport, letters or medals are awarded.

The largest undertaking of this organization is the traditional May Carnival, which was held May 16.

FEATURE

WALKING.



In competition with the High School, the volleyball team was defeated 32-25. Members of the team included Mary Lou Moore, Sidney Connolly, Martha Randall, Frances Robertson, Shirley Sievers, Selma Zitzer, Betty Prideaux, and Gertrude Kay.



An intra-mural ping pong tournament resulted in the following winners: Gertrude Kay, Dorothy Hermann, Frances Robertson, and Muriel Eddy.



The basketball team fell prey to the High School team with a score of 23-2. Those winning letters were Maxine Chu, Betty-Jo Shown, Gertrude Kay, Betty Crossley, Frances Robertson, Vivian McNamee, and Diane Woodford.

An intra-mural fencing tournament and exchange sports meet with Reed College were spring activities. This sport gives an opportunity for individual achievement.

EVENTS

Gertrude Kay
Jerry Allen
Carmelita Chambers
EATING

Shuttlecocks and badminton rackets flew fast and furiously throughout the year in preparation for the badminton elimination contest held this spring. Letters were awarded to Gertrude Kay, singles winner; Jerry Allen and Carmelita Chambers, doubles winners; and Mary Lou Moore.



The swish of arrows as they sped toward the target was heard from the archery range as archers aimed for the bull's eye.



Tennis competition became strong with the advent of spring. An intramural tournament and meets with Reed College were outstanding.



Portland Riding Academies and Hunt Clubs were centers of interest for horse lovers. Cross country riding and equitation classes were off-the-campus physical education activities.



*My dear
to all
of the
Lopps*

*The Luck of
Margaret Allyn*



FRONT ROW: Elizabeth Arnreiter, Ruth Page, Dorothy Lilly, Robin Oulton, Joyce Roberts, Ruth Hetrick.
SECOND ROW: Dorothy Challacombe, Dorothy McBreen, Mary Lou Moore, Jean Webster, Jeanette Gunther, Sidney Connolly, Betty Prideaux, Gene Nelson, Margaret Peters, Margaret Allyn.
THIRD ROW: Violet Tegart, Frances Robertson, Jane Cameron, Renee Folquet, Jane Deacon, Ruth Director, Charlotte Mosler, Irene Dalrymple.
MEMBERS NOT SHOWN: Betty Lou Brugman, Mary Butler, Kay Edmunds, Dorris McBreen.

International Relations Club

FALL SEMESTER

- President Betty-Jo Shown
- Vice-President Dorothy Challacombe
- Secretary Kay Edmunds
- Treasurer Betty Crossley
- Reporter Gene Nelson

SPRING SEMESTER

- President Jeanette Gunther
- Vice-President Kay Edmunds
- Secretary Renee Folquet
- Treasurer Jane Cameron
- Reporter Dorothy Lilly

Adviser.....Miss Imogene Ellis

Approximately eighty students of Portland high schools and colleges attended a two-day conference at Everglades, May 9-10, sponsored by this organization. The general topic of discussion was "America Faces a World at War". Jane Deacon, Elizabeth Arnreiter, and Ruth Hetrick were leaders of the round table discussions, based on the main subject.

The annual International Relations Club dance was held in November. Flags from foreign nations were used as the decorative theme. A series of five dinners for the members at restaurants serving foreign foods proved to be one of the popular activities during the year.

Delegates to the Northwest Regional International Relations Club conference of college students were Ruth Hetrick, Joyce Roberts, Jeanette Gunther, Gene Nelson, Irene Dalrymple, Frances Robertson, and Miss Imogene Ellis, adviser. The conference was held at the University of Oregon, February 23-24. Ruth Hetrick and Frances Robertson presented papers.



FRONT ROW: Dorris McBreen, Emmabelle Richards, Mary Eleanor Bedwell, Gertrude Kay.
 SECOND ROW: Reiko Azumano, Gene Nelson, Jean Webster, Nadine Stephens, Dr. Alice Bahrs, Miss Dorothy O'Dea, Betty Crossley, Mary Frances Woerner, Joyce Roberts, Eleanor Staehli, Mary Butler.
 THIRD ROW: Eva Marie Susac, Dorothy Wirta, Betty-Jo Shown, Violet Tegart, Jeanette Gunther, Esther Lenon, Frances Robertson, Vivian McNamee, Jerry Allen, Madeline Chin, Maxine Chu, Irma Clarke, Dorothy Challacombe, Ina Takei, Billie Adels, Frances Namba, Selma Zitzer.
 MEMBERS NOT SHOWN: Vera West, Jeanne Miller.

Curie Club

President	Betty Crossley	Advisers	Dr. Alice Bahrs,
Vice-President	Frances Namba		Miss Dorothy O'Dea,
Secretary-Treasurer	Betty-Jo Shown		Miss Marian Pettibone

Curie, named for Madame Curie, is the science honorary. Its purpose is the furthering of science and woman's contribution to the development of science. Pre-nursing students are accepted into the club as well as all regular students maintaining an average of "B" or above for one semester.

The principal activity of the club's year was participation in the Willamette Valley Science conference at Reed College, April 20. Four papers were presented: "Restaurant Bacteria", Eva Marie Susac and Betty Crossley; "Fingerprinting", Emmabelle Richards and Frances Robertson; "Lactobacillus Acidophilus", Esther Lenon; and "Trickinosus", Luella Adels.

In October the club made a beach trip to Seaside; and in May, along with the Zoology class, there was another beach trip to Nelscott. A field trip to the Oregon Biological supply house in the spring was a part of the program. The initiation ceremonies were held at Betty Crossley's Briarwood home.

Speeches given during the year were "Animal Babies" by Dr. Alice Bahrs; "Serums and Vaccines" by Frances Robertson; and "Sulphanelamide" by Dorothy Challacombe.



FRONT ROW: Billie Adels, Ina Takei, Betty Crossley, Betty-Jo Shown.
 SECOND ROW: Jerry Allen, Emmabelle Richards, Reiko Azumano, Nadine Stephens, Dr. Alice Bahrs, Evelyn Haworth, Frances Robertson, Margaret Peters, Dorothy Wirta, Irma Clarke.
 THIRD ROW: Martha Randall, Diane Woodford, Dorothy Hermann, Gertrude Kay, Dorothy Calderwood, Maxine Chu, Mary Eleanor Bedwell, Betty Irvine, Ann Hawkins.
 MEMBER NOT SHOWN: Frances Chaney.

Camera Club

Chairman Gertrude Kay Custodian Luella Adels
 Adviser Dr. Alice Bahrs

For the first time in its history the Junior College has a Camera Club. The club was organized in February under the sponsorship of the Curie Club and was opened to all those interested in photography.

The club has its own dark room in the Lower School basement. They have bought equipment, consisting of a printer, developer, chemicals, ferrotyping tin, and a roller.

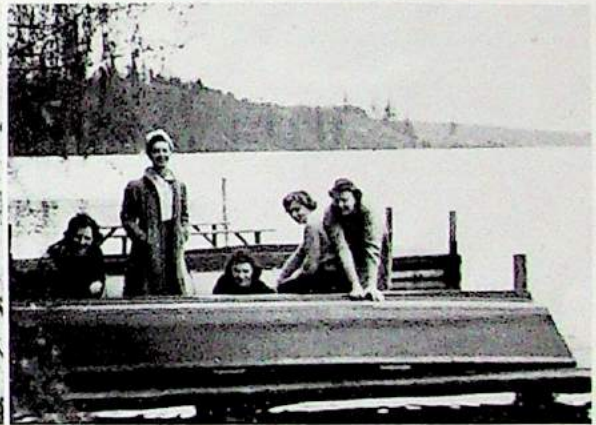
Dr. Alice Bahrs, club adviser, gave a series of lectures during the spring term on developing and printing films. Membership cards were issued.



SWEEPSTAKES



SCHOOL — AUDRA HAFFENDEN
(Honorable Mention)



EVERGLADES — GENE NELSON



CAMPUS — JEAN MacKELLAR



TYPICAL — FRANCES ROBERTSON



FRONT ROW: Frances Robertson, Esther Lenon, Emmabelle Richards, Billie Adels, Betty Crossley, Ina Takei, Muriel Hawes, Evelyn Haworth, Frances Namba, Eva Marie Susac, Irma Clarke, Sidney Connolly.
 SECOND ROW: Dorris McBreen, Mary Eleanor Bedwell, Helen Jean Richards, Carmelita Chambers, Mary Lou Moore, Muriel Eddy, Gertrude Kay, Betty Hermann, Lillian Spahn, Mary Frances Wintler, Yoshi Yoshizawa, Dorothy McBreen.

Forum Club

FIRST SEMESTER

President Bengta Peterson
 Vice-President Yoshi Yoshizawa
 Secretary Ina Takei
 Treasurer Mary Eleanor Bedwell
 Student Advisers..... Carmelita Chambers,
 Muriel Hawes

Adviser Miss Mary Hobson

SECOND SEMESTER

President Evelyn Haworth
 Vice-President Yoshi Yoshizawa
 Secretary Esther Lenon
 Treasurer Muriel Hawes
 Student Advisers..... Betty Crossley,
 Mary Lou Moore

Forum members are seeking to apply religion to their daily lives. This year's study covered many subjects, including the books, "Union Now", "Religion in the Home", "Missions", and "St. Mary's School in Sewanee, Tennessee". Speakers included the Reverend Richard Flagg Ayers, the Reverend Frederick MacDonald, Miss Mary Hobson, Miss Virginia Mathews, and club members.

The club projects included the purchasing of presents and a Christmas tree for the Japanese Episcopal mission, the making of First Aid equipment during Lent, the buying of gowns for the Hudson Strait Hospital at Fort Yukon, Alaska, and the preparation of scrap-books for the children in the Portland hospitals.

Members of the club had charge of the college chapel throughout the year. Luella Adels was the club's delegate to the Christian Youth Conference at Salem.

The social year began with a weekend at Everglades, when new members were initiated. Activities of the year were climaxed with a ski trip to Mt. Hood in February.

The service of Holy Communion is given monthly for the members.

*Just always
don't forget
Gene*



FRONT ROW: Reiko Azumano, Esther Lenon, Billie Adels, Ruth Hetrick, Audra Haffenden, Emmabelle Richards.
SECOND ROW: Mary Eleanor Bedwell, Nadine Stephens, Vivian McNamee, Lillian Spahn, Frances Robertson, Barbara Wuest, Ardys Redman.
THIRD ROW: Gertrude Kay, Muriel Hawes, Jean MacKellar, Mary Steinke, Frances Chaney, Gene Nelson, Irene Dalrymple, Yoshi Yoshizawa, Maxine Chu.
MEMBER NOT SHOWN: Luise Broleen.

Press Club

President Frances Robertson Secretary Reiko Azumano
Vice-President Frances Chaney Treasurer Gene Nelson

Business meetings were combined with social get-togethers on the Press club calendar. A Thanksgiving potluck dinner, a suki-yaki dinner, a spring potluck dinner, and a weekend at Everglades were outstanding.

The traditional Cotton Day, which the Press Club sponsors annually, was held May 1. Renee Folquet won first place for the most attractive self-made cotton dress, and Ruth Page won honorable mention. In the purchased dress division Polly Miller won the prize, and Jane Cameron was awarded a prize for the most unusual dress.

The club's term project was the preparation of three bound editions of the "Hall Tree", which were presented to the library.

New club pins were designed and purchased in March, and gold and white were chosen as the club colors.



FRONT ROW: Lillian Spahn, Jean MacKellar, Ruth Hetrick, Elizabeth Arnreiter, Barbara Wuest, Frances Robertson, Ardys Redman, Betty-Jo Shown.
 SECOND ROW: Reiko Azumano, Esther Lenon, Emmabelle Richards, Gertrude Kay, Vivian McNamee, Mary Steinke, Frances Chaney, Mary Eleanor Bedwell, Maxine Chu, Irene Dalrymple.
 MEMBER NOT SHOWN: Audra Haffenden.

Hall Tree

Editor-in-Chief	Frances Robertson	Business Manager.....	Eleanor Staehli
Assistant Editor.....	Reiko Azumano	Typist	Emmabelle Richards
Exchange Editor.....	Maxine Chu	Adviser.....	Mr. Malcolm Bauer

The members of the "Hall Tree" staff worked hard throughout the year to maintain standards established by their predecessors.

During the first semester two printed editions and four mimeographed editions were published. During the second semester a new plan was carried out successfully. The papers were mimeographed by girls on the staff in order to reduce expenses and assure accuracy. Heretofore all editions had been mimeographed outside the school. Copies of each edition of the paper were saved by the Press Club to be bound.

The paper, which was first printed in 1934, was given its name because the "Hall Tree" is "where we hang all the news".

Reporters: Elizabeth Arnreiter, Mary Eleanor Bedwell, Frances Chaney, Janice Cordova, Irene Dalrymple, Audra Haffenden, Ruth Hetrick, Gertrude Kay, Esther Lenon, Jean MacKellar, Vivian McNamee, Betty-Jo Shown, Mary Steinke, Barbara Wuest.



FRONT ROW: Frances Robertson, Jeanne Miller.
SECOND ROW: Dorothy Dicks, Betty Crossley.

Scintilla Staff

Editor-in-Chief	Jeanne Miller	Business Manager	Dorothy Dicks
Feature Editor	Frances Robertson	Advertising Manager	Betty Crossley

Advertising Staff: Reiko Azumano, Mary Butler, Madeline Chin, Maxine Chu, Frances Chaney, Dorothy Dicks, Gertrude Kay, Jerry Keller, Martha Randall, Eleanor Staehli.



FRONT ROW: Margaret Allyn, Edith Bradley-Demos, Mary Butler, Elizabeth Arnreiter, Marie Grozan, Dorothy Calderwood, Ruth Davis, Jean Baleman, Bette Blake, Luise Broleen, Betty Lou Brugman.
 SECOND ROW: Kay Edmunds, Marion Beebe, Irene Dalrymple, Georgia-Lou Gage, Janice Cordova, Dorothy Baldock, Carmelita Chambers, Maxine Chu, Jane Deacon, Jane Cameron, Renee Folquet, Joyce Ekwall, Mary Eleanor Bedwell, Ruth Director.

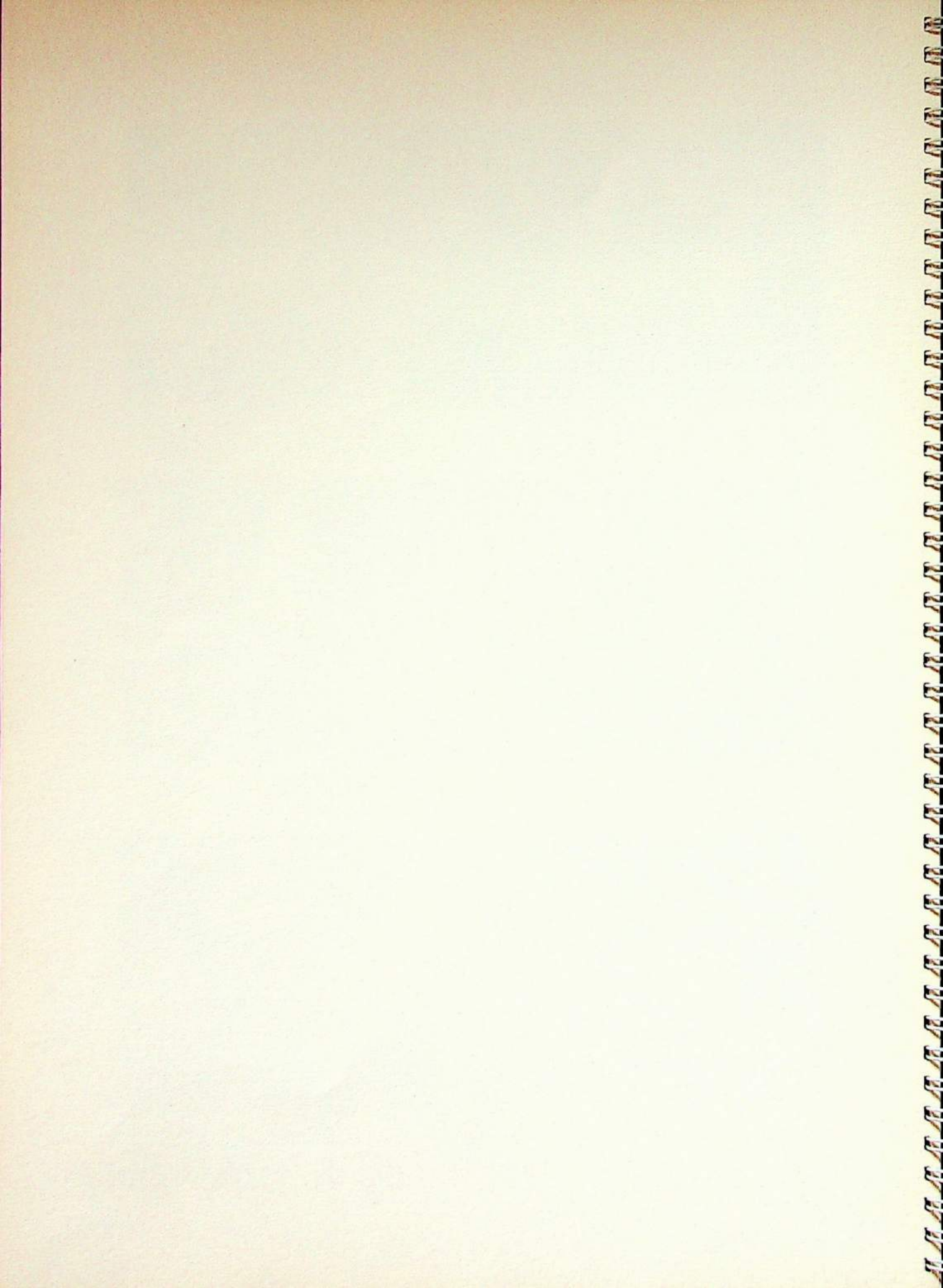


FRONT ROW: Audra Haffenden, Gloria Kibbee, Evelyn Haworth, Virginia Johnson, Ruth Hermitage, Ruth Hetrick, Charlotte Mosler, Eloise Loveridge, Mary Margaret Martin, Gertrude Kay, Dorothy Hermann, Mary Lou Moore, Muriel Eddy.
 SECOND ROW: Dorothy McBreen, Lornelle Kennedy, Polly Miller, Ethel Haynes, Dorothy Lilly, Beverly Nordean, Gene Nelson, Jean MacKellar, Ann Hawkins, Betty Irvine, Dorris McBreen.



FRONT ROW: Caryanne Wissenbach, Patricia Simmons, Ruth Page, Hazel Watkins, Mary Steinke, Thora Prideaux, Margaret Peters, Betty Prideaux, Mary Frances Woerner, Robin Oulton, Joyce Roberts, Doris Stein.
 SECOND ROW: Barbara Wuest, Lorraine Shank, Mary Terjeson, Nadine Thomas, Jeanette Olson, Ann Reith, Helen Richards, Ardys Redman, Diane Woodford, Maxine Ross, Charlotte Stuart, Shirley Sievers, Naomi Steadman, Rachel Robinson, Yoshi Yoshizawa.

To Esther-
Best Wishes
Of Worthy Note
Dora Kridaway



Everglades

I sat alone at Everglades, feeding the swan and absorbing the beauty around me. The tendrils of the low-hanging weeping willows were caressed by each lap of waves against the rocks. A breeze swept flurries of dry leaves across the weathered planks of the tennis court and brushed a fir bough across the roof of the lodge. Then, all was still—the only movement being the gentle swaying of boats at the dock.

How peaceful it was—yet how lonely. I remembered the picnics in the afternoon, the overnight stays in the long rows of bunks, the evening "get-togethers" in the lodge where we had been inspired by group discussions on far-reaching subjects or more intimate matters.

I loved the gay parties, the splashing of swimmers in the water, the shouts of girls echoing among the trees, laughter and the melody of their songs around the outdoor fire in the evening. Twilight brought coolness and lagging canoes gliding homeward.

The day faded into twilight as I sat reminiscing, but only shadows wandered on the lake. Only in my imagination was the still beauty transformed into vibrant life! That is the memory of Everglades I wish to cherish.

—Betty-Jo Shown.



C
A
N
D
I
D





C A M E R A



1940 Scintilla Poetry Award

TO
PHANTASMA

By PEGGY BROOKE

Once a fever's fitful fancy wrought a dream
Of voices and a plashing,
A rippling and a splashing—
The sound of many voices o'er a stream.
Peering into misty space,
Something seemed to deaden sight.
Naught appeared of form or face
In the murky, leaden light—
A host of formless shadows at my side,
In the passive river's ever-moving tide,
And their presence caused no quiver,
On the surface of the river.

From the dimness welling,
Rising, falling, fading, swelling—
Voices all around,
A most melodious sound—
Sound of voices softly calling,
Rising, swelling, fading, falling.

The river gently surging,
A forward movement urging—
I felt myself resisting,
The moving tide insisting.
There was no sound of laughter,
With echoes following after.
There was no sound of gladness—
Only sounds of solemn sadness—
A host of formless shadows at my side,
In the languid river's ever-moving tide,
And their presence caused no quiver,
On the surface of the river.

I could not limn the figment,
Had I canvas, brush, and pigment.
The murmur of sad voices, o'er a stream—
A rippling and a splashing,
A pleasing, plaintive plashing
And shadows sweeping by me, in my
dream.

DEBUSSY

Ethereal waves of haunting tone patterns,
Tumbling and rippling in playful caprices,
Forming nebulous, ever-changing melodies
That roll shoreward from a sea of enchantment.

—Barbara Minor

A STORY OF YOUTH

Honorable Mention

Do you think I'll forget the tune that we chose
As the theme of our joyful romance?
Do you think for a moment I'll lose the spell
Of the way that we loved to dance?
Do you think that the walks on the cliff that we took
Will be lost in the many tomorrows?
Won't you know that the smile we exchanged in a glance
Will soften the oncoming sorrow?
Don't you see, my dear, that as long as we both
Feel the joy of the moments we glean,
We can live them again and love them as well,
As the time they first patterned our dream?

—Frances Chaney.

MY LOVE WENT FAR ACROSS THE SEA

My love went far across the sea
To fight and kill to make men free.
Now he is dead across the sea—
The world lives on but is not free.

The men still fight across the sea;
My love will not return to me.
The men still die across the sea—
The world lives on but is not free.

—Vivian McNamee.

MY HEART

I saw a heart in a cloud,
And I thought, "Is it mine"?
And I watched it pass by,
Thinking, perhaps it's a sign.

I watched the heart in the cloud,
And slowly it crumbled and broke,
And I knew that the heart was mine—
That the clouds had been playing a joke.

—Frances Robertson.

1940 Scintilla Prose Award

to
SCINTILLATIONS

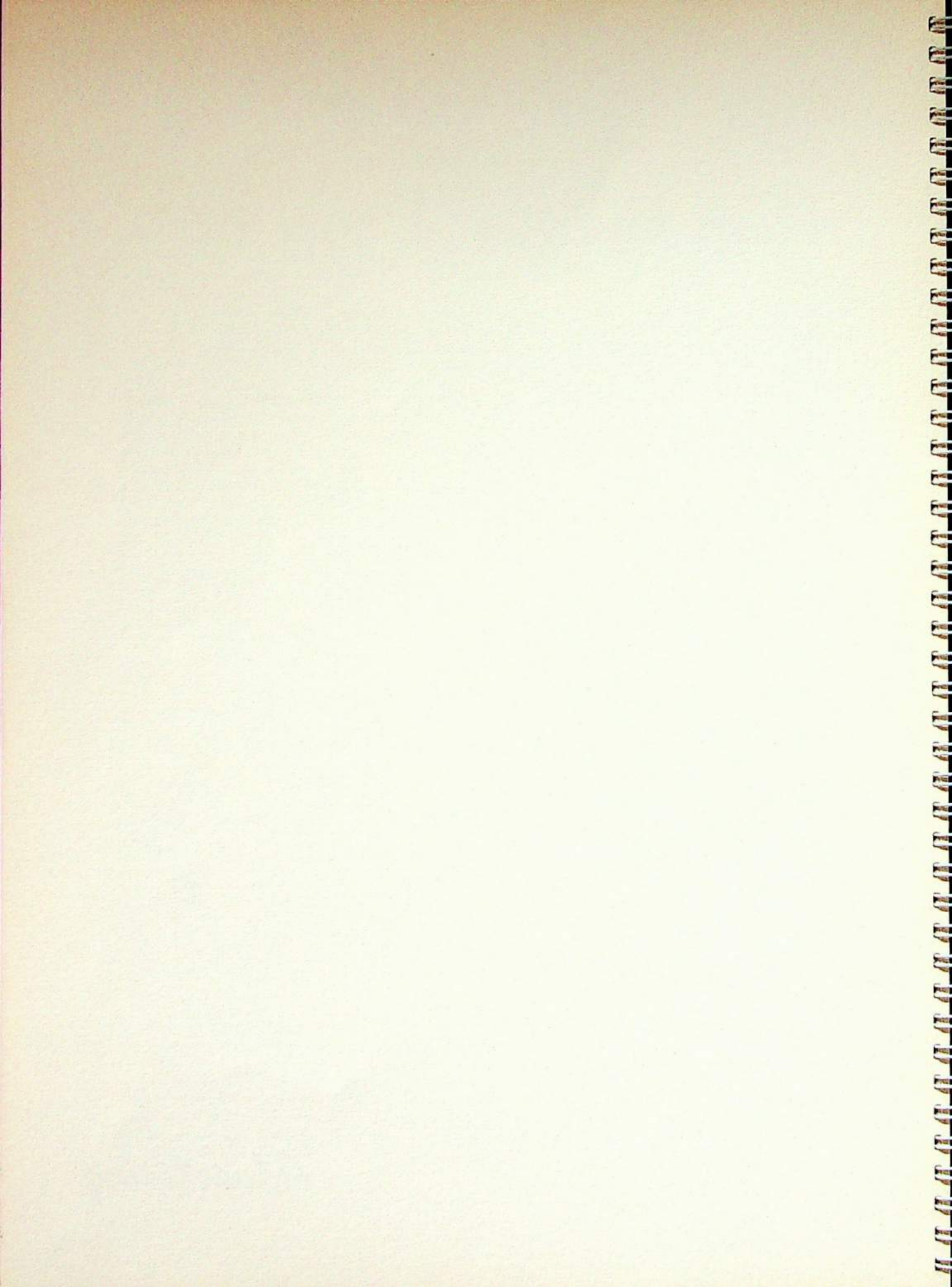
By BARBARA MINOR

Once again as the warmth of April sunshine spread its welcome radiance over the enclosed patch of green campus, friendly greetings and delighted laughter filled the rain-freshened air. Girls scurried from the main building to the sunlit porch of the dormitory or wandered to and fro, looking for a comfortable spot where they could eat and chatter during the short lunch hour.

On a bench by the chapel door a sophomore sat, half screened by the leafy branches of a shrub that nestled near the sun dial. She might have seemed lonely to a casual observer, but she wasn't. She chose to sit in this partially secluded corner, where she hoped to untangle the turbulent thoughts and feelings that had taken possession of her. Up to this moment she had been wholly occupied with school activities: papers, tests, scientific experiments, club meetings, sports, and social events. But suddenly spring chanced by, renewing life and inviting carefree indulgence in its invigorating atmosphere. High spirits prevailed at the Hall and brought relief from the mental strain of the long winter months. The exuberance, the joy of living, brought with it something else, however, something that chilled the heart of the sophomore. She was thinking of this same gay period of the year before when she had been a freshman, happy and light-hearted, remembering that the weeks had flown from then until commencement time. Commencement had been beautiful, yet somehow sad, even then—and now it was approaching again. She began to realize fully how much her life at the Hall had meant to her, how crowded the fleeting hours had been. There were hours of hard, exhausting work; moments stolen for play; small triumphs and momentary disappointments. The highlights of this last year passed before her in panoramic view: Freshman Week with eager, humble nobodies wanting to belong . . . the first Student Body dance with freshmen somewhat abashed at the prospect of meeting all who were on the list of patrons and patronesses . . . Thanksgiving and Christmas baskets everyone sharing and finding her own celebration richer because of that sharing . . . term papers, vacation, and exams . . . a strenuous combination of fun, excitement, and slaving over the last 499 words necessary to finish the 5000 word paper . . . the new term, each girl vowing silently, "I'll never leave things to the last minute again" . . . Valentine's Day and the dean's birthday, sincere "out-of-tune" renditions of "Happy Birthday" ringing through the halls . . . intercollegiate conferences with enthusiastic delegates bringing glowing reports from other schools . . . Cotton Day and Campus Day, with informality and fun the passwords for participation . . . the spring play, climax of the work of the drama department and another outstanding triumph for the school, crowning success because or in spite of the number of box lunches thrown into its production . . . selection of the May Queen and the glorious climax to weeks of speculation and anticipation, the May Carnival, clubs vieing with each other in resourcefulness of booths . . . week-ends at Everglades . . . elections of Student Body officers for the coming year . . . exams again . . . the Sophomore banquet and spring formal, culmination of all the best dreams that a girl at the Hall can have . . . Baccalaureate, distribution of the Scintilla and the Torchlight Procession, forecasting already the regime of the coming year . . . and finally Commencement, the most beautiful conclusion possible for two years filled to the brim with cherished memories which pass in review, keeping time to the strains of "Pomp and Circumstance". And still more wonderful are the even stronger bonds which tie the memories together . . . understanding, kindness, and friendships, all blending into a deep feeling for the Hall, symbolized by the quiet inspiration of the simple, sunlit chapel.

The sophomore was brought back to reality by the insistent ringing of the bell which marked the end of the lunch hour. Her eyes were moist but in her heart she was content and thankful for two completely happy years. She arose with a sigh and started back to mingle with her gay companions. As she walked, her gaze wandered upward, and she glimpsed a fleecy cloud moving behind the corner of the dark brick building, against which was silhouetted the outline of the cross. For a moment she was spellbound by the beauty of the picture. There she bowed her head, silently murmuring a prayer of gratitude, and returned to her work with renewed courage and effort, knowing she had experienced a true appreciation of her life at the Hall.

Advertising





KING & CO.

Millinery

121 S. W. 10th Avenue

Portland, Oregon

L. F. CHESS PLUMBING &
HEATING

FOR BETTER PLUMBING SERVICE

Broadway 5251

Compliments of

NORTHWEST AIRLINES
INC.

NIKKO

SUKIYAKI . . . CHOP SUEY . . . NOODLES
TEMPURA (FRIED SHRIMP)

Phone Broadway 3928

126 N. W. 4th Avenue

Portland, Oregon

DR. B. E. WRIGHT

DENTIST

RALEIGH BLDG., Third Floor

617 S. W. Washington Street, Portland, Oregon

Satisfaction Is Our Motto

HILLISON CLEANERS

1024 S. W. Montgomery Street

ATwater 6976

Compliments of

BROADWAY COLUMBIA
MARKET

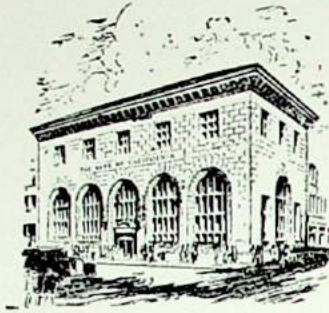
(For Quality and Service)

Congratulations, Graduates

PORTLAND VAN AND STORAGE CO.

407 No. Broadway, near Interstate

MODERN AND COMPLETE FIREPROOF WAREHOUSE
FACILITIES AND A NATION-WIDE
MOVING SERVICE FOR HOUSEHOLD GOODS



THE BANK OF CALIFORNIA

NATIONAL ASSOCIATION

Founded 1864

In Portland . . . S. W. Sixth Avenue and Stark Street

San Francisco :: Seattle :: Tacoma

MEMBER, F. D. I. C.

Portland's Own Store

Extends
Congratulations
To the Class of 1940



Meier & Frank Co.
Portland's Own Store

Names-Boling Business School

Complete Secretarial Course

604 WOODLARK BLDG.

BEacon 6784

Night Classes Tuesday and Thursday

HOY SUN LOW

Fine Chinese Food

301 S. W. SECOND AVE.

Compliments of

J. C. PENNEY CO.

Compliments of

ZELL BROS.

Chumley "Play-timers"

are the good looking play clothes you'll live in this summer!
The shorts, the slacks, the play suits that are young!
fun! and different!

Chumley "Play-timers" are exclusive with

CHARLES F. BERG

A GOOD BANK
For Your
SAVINGS ACCOUNT

The
**UNITED STATES
NATIONAL BANK**

Broadway and Sixth, at Stark
Member Federal Deposit Insurance Corporation

SUNFREZE

"Old Fashioned Goodness"

SPRINGBROOK DAIRY

There's cream in every drop.
From the bottom to the top,
Of our Grade A Homogenized Milk
940 S. E. MORRISON EAst 4414

Compliments of

DEAN VINCENT, INC.

314 S. W. Fourth Portland, Oregon

FLOWERS, TOMMY LUKE

ATwater 3131
24-Hour Delivery and Phone Service

Flowers

LIND & POMEROY

Union and Knott GARfield 1181

Congratulations, Graduates

Portland's 100% Union Department Store

ROBERTS BROS.

QUALITY MERCHANDISE REASONABLY PRICED

"S&H" Green Stamp Redemption Station at our Downstairs Store

S. W. THIRD AVE. AT MORRISON ST.

PHONE ATWATER 3124

THE BUSH PHARMACY

Corner S. W. 11th and
Montgomery

Prescriptions, Fountain, Magazines

Phone BEacon 6726 Portland, Oregon

OF COURSE!

you'll want

ARMISHAW'S
SADDLES

Tan and White
Black and White

\$4.95

ARMISHAW'S
526 S. W. Park

"One of America's Excep-
tional Business Colleges"

*Fully Accredited by National Association
of Accredited Commercial Schools*

Northwestern
School of Commerce

Always Exceptional Food at

HENRY THIELE'S

TWENTY-THIRD AT BURNSIDE

Garfield 5887

THE PAGODA

Chinese and American Dishes

Parking Space
3839 N. E. BROADWAY

BEacon 6819

BEacon 6718

NEUBAUER'S
Grocery and Bakery

1735 S. W. 11th Avenue, Portland, Oregon

SHAW SURGICAL CO.

LABORATORY SUPPLIES

620 S. W. Eleventh

Best Wishes of . . .

G. WESTALL DEACON

STUDIO

Your Photographer

2313 N. W. Lovejoy

BEacon 7803

ATwater 0086



GENUINE
HUARACHES

Hand Made
in
Mexico

727 S. W. TENTH AVE., PORTLAND, ORE.
EMILY K. BARD
Manager

ROY & MOLIN

Established 1912

JEWELERS & OPTOMETRISTS

316-318 S. W. Alder Street, Portland, Oregon
ATwater 4321

Compliments of

OREGON PORTLAND CEMENT
COMPANY

111 S. E. Madison St., Portland, Oregon

Barton's

EASTERN BEAUTY SALON

EASTERN OUTFITTING CO.

Open 9:00 A. M. to 6:00 P. M. BRoadway 2461

S. MILTON HERMANN
SEED & FLORAL

When you want something to succeed
In bulbs, roses, and seeds,
And are in great haste,
To be satisfied in your taste.

Call LANcaster 1602

Flowers For All Occasions
Floral Designs Our Specialty

1930-34 S. E. Powell Portland, Oregon

TOKIO SUKIYAKI

SUKIYAKI . TEMPURA

Phone ATwater 9900

224-8 N. W. 4th Ave. Portland, Ore.

Phonograph Records . . . Pianos Tuned

G. F. JOHNSON MUSIC CO.

1022 S. W. Morrison St. Portland, Ore.

Compliments of

ENKE'S CITY DYE WORKS, Inc.

3 LOCATIONS

Phone EAst 4141

★

Compliments of

OREGON GROCETERIA

★

- Karl J. Klein, Jeweler.....610 S. W. Broadway
- Lillian Hope Beauty Salon.....1503 S. W. 13th Avenue, ATwater 5966
- Majestic Cleaners & Dyers.....1900 W. Burnside, ATwater 5494
- Phillips Bakery.....822 N. Lombard
- Compliments of Sims and Sims, Lawyers.....Henry Building
- Milady's Beauty Shoppe.....Mohawk Building, ATwater 0441
- Oscar Auestad.....315 S. W. Pine Street
- Compliments of L. D. Heater Music Company.
- Oswego Pharmacy.....Oswego, Oregon
- Carruther's Grocery and Market.....1338 S. W. Jefferson St., ATwater 4173
- Wintler Drug Company03 S. W. Gibbs, ATwater 4683
- Moreland Everfresh Market.....1634 S. E. Bybee, LANcaster 5944
- Compliments of Dr. P. A. Trullinger.
- Perry, Roy A., your druggist.....Jefferson at Thirteenth, BEacon 8927



Featuring . . .

*Creamline
Jersey Milk*

World's Richest Milk

AT 0428
ALPENROSE DAIRY
H. C. CADONAU, Proprietor

LAMB'S KING HILL GROCERY &
MARKET

2265 W. Burnside Street
BEacon 2146

F. A. Andersen, Manager
Joseph Roberts, Asst. Mgr.

BROADWAY
DYERS & CLEANERS

1724 N. E. Union Avenue TRinity 1222

Fountain Lunch Free Delivery
Prescriptions

ALAMEDA PHARMACY

24th and Fremont GARfield 5820

Delicious
FROSKIST
Ice Cream



DISTINCTIVE LIGHTING FIXTURES

BAKER-BARKON CO.

MODERATE PRICES!

S. W. 14th and Morrison
Portland, Oregon

The Portland Civic Theatre
presents

"THE PLAY'S THE THING"

By Ferenc Molnar

MAY 17 AND 18

Neighbors of Woodcraft Auditorium

CLARKE BROS.
BROADWAY FLORISTS

25
HOT HOUSES

BROADWAY
Near Morrison

Autographs

Esther, we've had a
lot of fun together,
her's hoping for more
in the future
Mary Eleanor

Best of luck to you
and may your plans
for the future turn
out the way you want
them. Love, Adele.

