



The OES

# Belltower

Oregon Episcopal School Celebrates  
125 Years of Academic Excellence

Autumn 1994

Volume 3

Number 4



*Anniversary Edition*

## A Letter from the Headmaster



ear Friends,

It is a rare privilege to be writing on the occasion of a 125th anniversary. The years are bursting with people and stories, many told in the pages of *The OES Belltower*. Many others are part of the lore and legend that make up the oral history of what we know today as Oregon Episcopal School.

This is a history of lives and their intersections. The School has been a catalyst for growth and change for thousands of young people. Destinies have been shaped on our four different campuses over these years. Leaders in service, industry, education, parenthood, the arts, or the professions have caught spark in our classrooms. Relationships have begun and flourished. Dreams have been fashioned and pursued.

Our alumni do not feel neutral about St. Helens Hall, Bishop Dagwell Hall, or Oregon Episcopal School. I have listened to alumni around the world talk of their days and years here with nostalgia, wistfulness, recognition, and fervor. Clearly, over these years, this School has made a difference.

We are 125 years old this year. You will read about the anniversary celebrations of our heritage in these pages. Here, we honor those who made the OES of today possible, whose vision, courage, industry and faith—and passion—have made the difference. Here you will also read of our future, the harvest of the love and labor that have gone before.

We invite you to join our thanksgiving.

Sincerely,

Peter W. Stevens,  
Headmaster



▲ Headmaster Peter Stevens and his wife,  
US Humanities teacher Hope Stevens.

# THE OES Belltower



## OREGON EPISCOPAL SCHOOL

At Oregon Episcopal School, exceptional faculty challenge students of unusual promise to reach their highest potential within a tradition distinguished by love, compassion and trust. Founded in 1869, Oregon Episcopal School is a pre-K through 12, coeducational, independent, college preparatory school in the Episcopal tradition. A full boarding program is offered in grades 9 through 12. Exceptional teachers engage students in small classes that stress participation, creativity and a passion for active learning and living. Within a traditional framework, dynamic programs in the fine and performing arts and athletics encourage student participation. Located on the Pacific Rim, the School emphasizes global studies and an international outlook. Virtually all graduates attend fine colleges. Responsible citizenship, ethics and community service are important at OES — a School where students are encouraged to reach their fullest potential in a loving and caring environment.

**Photos** Brian Foulkes

**Stories** Helen Kirschner '85, Carl Reynolds, D. Chuck Mauritz

**Editor** Helen Kirschner '85

**Layout and Design** Graphic Solutions

**Printer** Riddle Press

**On the Cover** St. Helens Hall Graduating Class of 1881. Standing from left: Mary A. Shindler, Ida K. McKenny, and Margaret Green. Seated from left: Maria Clopton, Susan Whalley, and Elizabeth Irving.

*The OES Belltower* is published by OREGON EPISCOPAL SCHOOL, 6300 SW Nicol Road, Portland, Oregon 97223. If you would like more information on the School, please call (503) 246-7771.

## The 125th Anniversary of Oregon Episcopal School Begins!

A U T U M N  
1 9 9 4



▲ A banner-toting airplane was just one of the many surprises during the Opening Day festivities.

Greeted by perfect weather, over 700 students returned to campus with their parents on September 7, 1994, to kick off the 125th Anniversary of Oregon Episcopal School. The School's long history in Portland was honored on this occasion with the presence of SHH, BDH and OES alumni and special guests, including the Royal Rosarians, who planted the OES 125th Anniversary rose in honor of the occasion.

Over 1,000 brass bells were rung in succession by students, parents, alumni, faculty and staff, and a banner-toting airplane proclaimed the anniversary celebration. The 125th Anniversary Song was sung by all, and the fifth grade carried out their traditional bell ringing. This year, there were 125 rings of the bell that has followed the School since its founding in 1869. A reception for alumni and special guests followed in the 125th Commemorative Rose Garden, where the new School rose has been planted.

In keeping with the momentous nature of this special year, this fall edition of *The OES Belltower* is devoted to the memories of our alumni. Reflected in the photos, quoted anecdotes, and excerpts from School publications is the spirit of Oregon Episcopal School which has endured throughout the past 125 years.

OREGON  
EPISCOPAL  
SCHOOL

# Opening Day Kicks Off The 125th!



▲ OES dads wear cool ties! Kobel Haver, father of first grader Samara, and Mark Rosenberg, father of sixth grader Arielle and fourth grader David, compare styles on Opening Day.



▲ Director of Admissions and OES parent Louisa Zendt talks with Bishop Ladeboff before the Opening Day belltower ceremony begins.



▲ A banner proclaiming the arrival of the Class of '95 adorned the doors of St. John's Parish on Opening Day.

▼ OES students don't all feel the same about the first day of school, as shown by first graders Jacob Reisberg and Lucia Foulkes.



▲ OES parent Wendy Hamilton presents guests with brass bells emblazoned with the OES 125th logo.



▲ Members of the Opening Day processional wait to take their places in front of the belltower.



▲ First grader Mary Warrington was accompanied by her father, Mark, on Opening Day.



◀ Student representatives from the Lower, Middle and Upper Schools describe their divisions' contribution to the 125th anniversary time capsule, which has been buried behind the belltower.



▲ Headmaster Peter Stevens welcomes everyone back to OES for its 125th year.



▲ The fifth graders carry out the traditional ringing of the bell—125 times, this year—that has followed the School to all of its sites in Portland.



▲ Some of the newest alumni of OES returned to campus for Opening Day. Aaron Smith, Jennifer Thomas, Chris Michlig, Margaret Spring and Heather Laird, all from the Class of 1994, look at the '93-'94 yearbook.



▲ Alumnae and friends of OES served tea at the alumni reception held in the 125th Anniversary Commemorative Rose Garden. Lois Honeycutt, wife of Royal Rosarian prime minister Ed Honeycutt, Mary Jane Owens McNulty '47 JC, Pat Kendall Apperson '48 JC and Mary-Helen Duffy Hansen '45 JC pose in front of the refreshment table, which was adorned with teacups donated to the School by alumni.



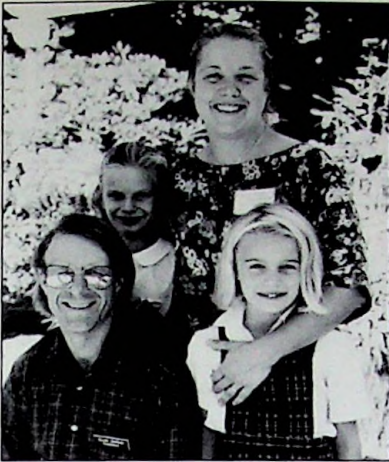
◀ The Royal Rosarians were on hand to officially plant and dedicate the OES 125th Anniversary rose in the newly-planted rose garden, during an alumni reception following the belltower ceremony.



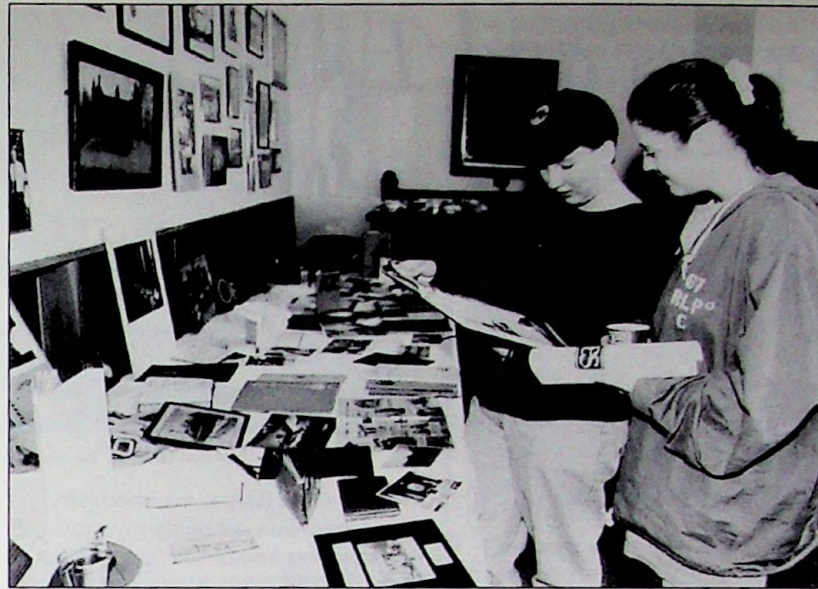
▲ The OES 125th Anniversary Rose was developed by Heirloom Old Garden Roses, in St. Paul, OR, in honor of this important year for the School.



▲ Former St. Helens Hall teacher Sister Margaret Helena attended the Opening Day festivities from New Jersey, accompanied by Sister Mary Lynn. Here, she is greeted by Oregon's Bishop Robert L. Ladehoff as Father Roy Coulter, Dean of the Diocese, looks on.



▲ *The 125th Anniversary Commemorative Rose Garden was designed and planted by Elizabeth von Behren and her husband, OES groundskeeper Allan Lehman. Their daughters are Rebecca and Anna, who are in the fifth and second grade at OES.*



▲ *Recent graduates of OES look at historic memorabilia from the OES archival collection.*



▲ *Carla Sosanya, mother of OES sophomore Tunde, took orders for the OES 125th Anniversary rose during the reception.*



▲ *Suzanne Scoutin Hamann '47 JC and Meridel Prideaux '59, co-chair of the 125th Anniversary Committee, sign the guest book.*



◀ *Norma Fisher Atkins '57 and Virginia Euwer Wolff '55 were among the alumni who attended the rose garden reception on Opening Day.*



▲ *Alice Kimball Treubella '41 took home an OES 125th Anniversary rose.*

# Academics and Educators



▲ *The student body of St. Helens Hall, gathered together in 1891.*

We were fortunate to have such caring and dedicated teachers, like the Latin teacher Miss Evans, Mrs. Shuman and Mrs. Knapp.

Elizabeth Pownall Swindells '34

Gertrude Fariss and her wonderful Shakespeare class held in the "Round Table" room in the Junior College—it was "heaven" to have Gertrude lead that class; also, Carolyn Bowers Collette's Technique of Acting class.

Jane Merriman Gilpin '39 JC

biology class opened windows into fields of study I'd long loved, and it was exciting to draw evolution charts and write essays for him; gentle Miss Rands, and Clarence Slocum and all his vigor and discipline made Spanish intriguing.

Elizabeth Parker Belles '44

Dr. Alice Bahrs, my chemistry teacher, was probably my most endearing instructor. She cultivated my interest in science. Interestingly, she was a practicing M.D. when I was attending Oregon State College.

F. Elise Bede Swan '44 JC



▲ *Current OES Headmaster Peter W. Stevens studies alongside Lower School students in the 1990s.*

Cook was special because she gave so much extra-curricular time to the students.

Janet Banks '89

I have so many wonderful memories from OES... I have various favorite teachers and classes from which I learned and grew, sometimes without knowing!

Tansy Briggs '89

Seventh and eighth grade teacher Ruth Jackson gave me a world view of art, music and travel, the great places to see plus a life-long memory of those things and appreciation for fine arts.

Gloria Spencer Crowson '49

I thrived on the learning atmosphere of St. Helens Hall and I really can't recall a class I preferred over the rest!

Barbara Jean Freeman Hinman '49

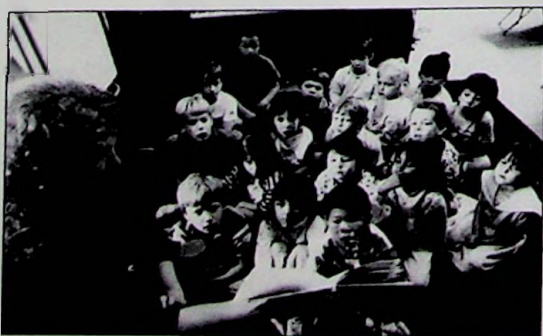
Fr. Dr. Tom Goman had a passion for teaching and life. He was known to shout in joy when one of us showed a momentary brilliance.

Kevin Shilling '86



▲ *Ruth Rose Richardson '36, head of the English Department at St. Helens Hall from 1953 to 1971, pictured with a student from St. Helens Hall in the 1960s.*

The small classes, many friends and caring attitude of the staff; many teachers were nice, but physical education teacher Colleen



◀ *A group of captive Lower School students are led through a story by OES 3rd grade teacher Norene Calkins in 1994.*

**A**h! Sweet sleep and relaxation—the eighth wonder of the world. Who needs it? You can't sleep, we won't allow it... So just stay up and do that paper or reading or those exercises and you're sure to get A's. And once you have A's, you are on your way to the prestigious college of your choice... So, you see, you really don't need that sleep...

Brian Litzenger '86, from *The Aardvark*, 1983

There were many favorite teachers, but one activity in particular sticks out in my mind. We were sophomores in

Middle European History class with David Hursty. We were planning a form of diplomacy and I was Serbia, a country I have since learned much about as luck would have it.

Autumn Alexander-Skeen '74

The glorious setting on 13th and Hall, where spring and autumn were unbelievably beautiful, a comfort in those terrible World War II days; the quiet of Study Hall in the handsome library; Paul Beistel's combination English-



▲ Upper School choir members rehearse in 1994.

All the wonderful, dedicated teachers—Latin with Miss Campbell, who was hard but fair and such a wonderful person, Miss McKirdie's history classes and Mrs. Johnson's science classes.

Nancy Cannon Goodell '54

Staying up all night writing footnotes for the US history paper and project...

Elizabeth Laun Ursin '79

For my first interview with Miss Jane Allen Saxton I was scared silly, but from the first moment she inspired me with the spirit and goals of the Hall—spirit and goals which have shaped my life.

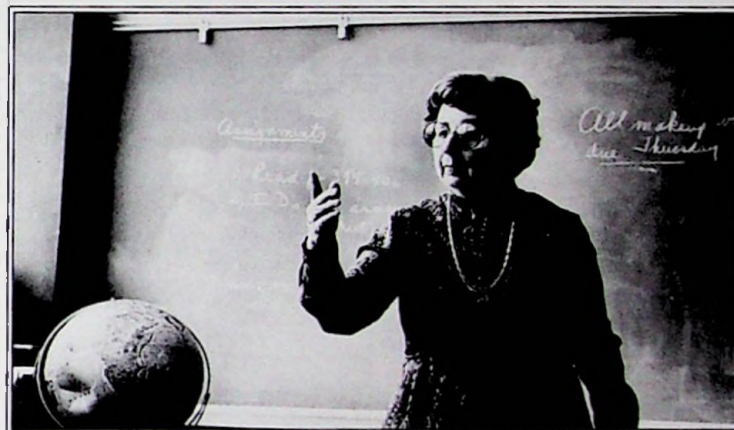
Joanne Henry Kreutzer '54



▲ In the 1990s, computers are an integral part of the Lower, Middle and Upper School curriculum.

The Gathering in the Great Hall, Winterim, Black Piet's appearance at the Christmas party, Chapel; Jack O'Brien, my theatre teacher, was the best because of his warmth, love for the theatre and the inspiration he gave me which stays with me until today. The intellectual stimulation that I received at OES enabled me to continue to pursue an education on similar lines after I returned to my home country.

Zeenat Potia, Exchange Student from India '91-'92



▲ Miss Eleanor Fass, teacher at OES from 1969 to 1985, leads class in the 1980s.

Ruth Rose Richardson: "Three things are unavoidable—you must pay your taxes, you will die and the verb 'to be' never never NEVER takes a direct object."

Sally Bowe Beaton '59

John Hicks: Cool  
Dave Hursty: Smart  
Roger Nelson: Engaging.  
Brent Erensel '74

My two favorite teachers were Miss McKirdie, [who] made history come alive in the way she taught it, and Miss Richardson—I still remember her reading the Canterbury Tales in Middle English.

Patricia M. Clarke Kempf '60



▲ Mrs. Janet Easterday directs a group of budding reporters in her journalism class at St. Helens Hall in 1949.

[I remember] Roger Fitzgerald for his incredible handsomeness, Mrs. Virginia Dowse for her kindness and Mrs. Helga Daret for her wonderful spirit.

Marjorie Anderson Cesolini '71

▼ *Young women of St. Helens Hall in Father Greenfield's religion class in 1962.*



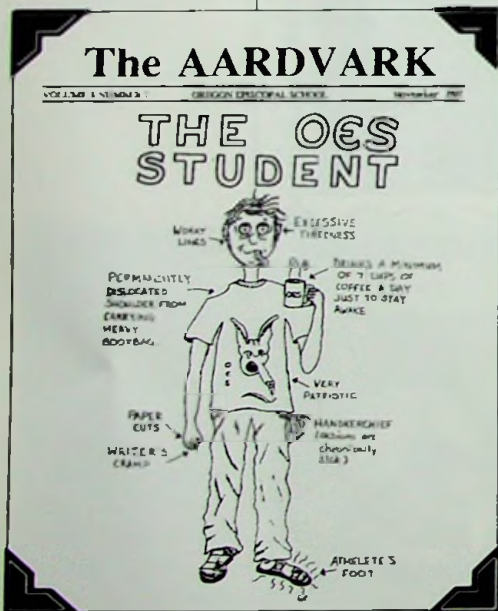
◀ *Gertrude Fariss, pictured here (on left) in 1946, directed the efforts of the Junior College of St. Helens Hall from 1932 to 1947 and later served as director of St. Helens Hall from 1954 to 1968.*

**W**hat is awareness? To become aware is to be reading your biology text and come across this: "The life of a cell depends on the molecular traffic through a membranous layer, the colloidal boundary of a cell..." After underlining it or taking special note of it for the next chapter test which will certainly be coming up, you suddenly realize that billions of cells in your own blood, skin, muscles, etc. are doing exactly what your biology book very clearly explains. You STOP. And you think about it for a moment.

Chuck Reynolds '69,  
from *The Hallmark*,  
1968



▲ *Middle School students participate in the design of the new Middle School facility. The OES Master Plan, introduced in 1994, calls for new and improved facilities on the OES campus.*



All the instructors I had were extraordinary: chemistry, math, Latin, English, etc. [I remember] the day students' locker room; the library listening to our student organ player practicing above; bouncing up like corks when an adult entered the classroom! We had a shop class which had to be unique for girls; I still have the little wooden chest I made.

Geneva Summersett Fraser '43



▲ *OES Upper School art teacher Jack O'Brien confers with Bruce Hoof (left) and Bill Drinkward (right), both members of the Class of '85.*

## Change and Continuity: Cynthia Doran, Counseling OES Students Since 1965

**A**s the faculty member who currently holds the longest tenure at Oregon Episcopal School, Cynthia Doran gamely enters her twenty-seventh year of teaching and counseling during this 125th anniversary year.

"I don't mind being a historic relic!" she jokes.

Cynthia joined the staff of the School in 1965, when it was still St. Helens Hall for girls. Initially a history, English, and religion teacher for sophomores and juniors, Cynthia filled her current post of college counselor in 1977, and has turned that program into a curriculum staple for OES juniors and seniors.

The college counseling program includes a handbook for OES students and their parents, which Cynthia wrote, and periodic informational meetings, including visits from college admissions officers. Cynthia herself routinely visits colleges and attends National Association of College Admission Counselors and College Board meetings. During Winterim, she holds a one week

introductory program for juniors, called College Decisions, and throughout the academic year there is intensive, one-on-one advising for Seniors before, during and after the college application process.

In an interview with *The OES Belltower* in its Autumn, 1992 issue, Cynthia reflected on the ways in which the School had changed—and remained the same—over the past 25 years since she joined the staff:

*OES has become a much more informal place. When Mrs. Fariss walked through the Great Hall 25 years ago, everyone stood up... Uniform regulations were rigid. And 25 years ago, no one would have dreamed of calling me Cynthia. Some of the best things have remained constant. This School has always had a sense of community—almost like a family. OES also has a love of—almost celebrates—the individual... And, I guess finally, we have a respect for learning. It's one of our keystones. We are able to inculcate a love of learning.*

Today, Cynthia emphasizes that, like OES, her job as college counselor has evolved.



▲ Cynthia Doran counsels an earnest member of the senior class.

"The emphasis at OES has always been on academic success, and hand-in-hand with that emphasis is the desire for our students to go to what is thought of as a 'great college'," Cynthia says.

"But I also think that students today understand more than ever that they need to find a good match. They're looking for a college experience that is right for them as individuals."



▲ French teacher Madame Wolfson in the 1950s.

Sister Agatha Louise, the principal, was my favorite teacher. She was so firm, but so kind. The strict regimentation was only a part of the total experience, but helped me realize the importance of self-discipline. The Sisters were wonderful!

Kirsten Anne Doblje, attended SHH Lower School in '40's

[I remember] Ruth Rose Richardson, who inspired me to develop writing talents.

Joanne Henry Kreutzer '54



▲ The wetlands area bordering the OES campus was purchased by the School in 1986, providing an ideal outdoor laboratory for Lower, Middle and Upper School students.

# Spiritual Traditions



▲ *Blue veils were traditionally worn to every chapel service at St. Helens Hall, as pictured on eighth graders in 1946.*

The morning prayer service we had each morning and Sister teaching us a little art as we walked back to our rooms (the long hall was lined with beautiful pictures); we learned a lot from the Sisters—it was a privilege living with them and attending St. Helens Hall.

Lillian Brooke Austin '35

I remember the Sisters going down the hall, with veils flying!

Elizabeth Pownell Swindells '34

► *The Rev. Stephen Schneider blesses the pony of fifth grader Christy Brinegar in fall 1993. The pet blessing ceremony, in honor of St. Francis of Assisi, is an annual tradition for Lower School students at OES.*



Like many of our era, I probably recall the Sisters with special affection, which might surprise them a bit to hear considering the way we sometimes acted up in Chapel.

Gloria Ross Grenfell '44

Watching Miss Saxton mince into chapel as if she had been sent from God!

Nancy Cannon Goodell '54

Wearing a hat and gloves to church; roses that were given out to the graduates; wearing the veil when you forgot your beanie for chapel service; Father Greenfield also holds a special place in my spiritual life; because of him I was very active for a long time in my church.

Patricia M. Clarke Kempf '60

When Sister Superior ordered me to her office, I arrived with quaking legs [but] then she told me that I had a perfect exam in religious studies! The Sisters were all so dear—friends that are still significant after 64 years! I remember talking with Sister Mildred

**THE INSTRUCTION** in this School will be of the most thorough character; the constant aim being to give a sound and practical education, and to surround the pupils with the influence of a refined Christian home and intercourse. Everything in the power of the Teachers and the Principal will be done to make a cheerful and happy home for the boarding pupils, and a careful oversight will be kept of their conduct and manners.

From the SHH catalog, 1869



▲ *Members of the Altar Guild prepare the altar appointments for the St. Stephens Cathedral in 1968.*



▲ *First graders Jeremy Otta and Terry Fields lead the procession to the Christmas Crib in December 1952.*



▲ *Lower School students gather for morning chapel in 1993.*

Eleanor as we looked out the window. I said "It is sad to see the leaves fall." She said, "But, Muriel, look how beautiful the branches are." True of a lot of things in life.

Muriel Gabriel Heltzel '30

Commencement exercises at Trinity Church, the hymns, Evensong and red roses. . .

Gloria Spencer Crowson '49

I remember sliding into the parlor on our knees, late for morning prayers before breakfast!

Barbara Jean Freeman Hinman '49

I loved Chapel in 1964 when we sang the services in the makeshift chapel.

Nora Brydges McMillan '68



▲ Lower School acolytes in the 1960s.

The Chapel in the Upper School building holds the most memories for me. It was so quiet and inviting, and I loved the hallways, the high ceilings and the stairs.

Kirsten Anne Doblle, attended SHH Lower School in the '40's



▲ The interior of St. Stephen's Chapel in the 1880s, at the original site of St. Helens Hall where Portland's City Hall now stands.

I remember that we had to be absolutely silent from Thursday in the evening until Saturday morning, for Good Friday. If we were successful, we would have a party to celebrate. You can imagine how hard it was at meals, when you had to ask to have the peas passed!

Geraldine Hanny Sargent '35



▲ St. Helens Hall students complete their duties as members of the Altar Guild in 1958.

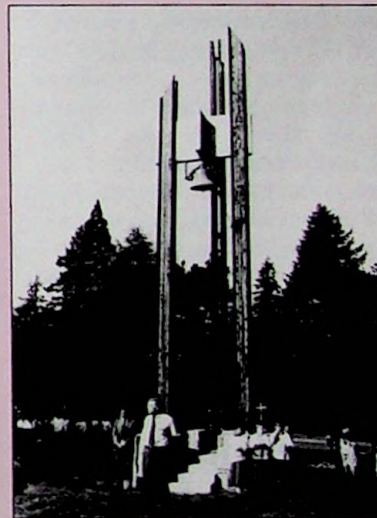
### A Spirit of Belonging for 125 years

This is where "We" belong. We belong in a place that holds life's stories both joyful and painful. We belong in a place that remembers those who gave it life. OES is such a place.

In the seven years I have been a part of OES I have never seen this school—this community—look to the future without first taking courage and wisdom from its past. Whether on the playing field, in the classroom, in a faculty or board meeting or in the dorm, there is the constant question that underlies every decision, and the life of this community: "Does what we are doing today honor those who came before us?"

I am pleased to say that it does. I have never heard anyone say "OES used to be such a good school." Sure, the School has changed—it's designed to. Life is supposed to go on. But through the years and all the changes, students, parents, alumni, faculty and staff have continued a tradition of excellence that goes back 125 years.

Today we honor 19 people who have lived that tradition and passed it on to us. I teach



in the Middle School and...Mary Reynolds is among those we remember today. Her granddaughter, Margaret Reynolds, just received the Faculty Award for outstanding scholarship and positive contributions to the OES community.

The tradition goes on. The lights of our past show the way for our future.

—Homily delivered by Middle School Chaplain Mike Devenney, Reunion Weekend Chapel Service, 1994



▲ The Rev. Canon Malcolm H. Manson, OES headmaster from 1982 through 1990.

# Extracurricular Activities & Antics



▲ *St. Helens Hall girls visit Battery Russell on a class trip to the Oregon Coast, 1918.*

An outstanding "faux pas" memory was during a Voice and Diction class! I was performing a scene from George Bernard Shaw's *Major Barbara*. The scene was set in the bathroom where the character was "making her toilet"! I had not read the stage directions as well as I should, and proceeded to get up and walk around! According to the author's directions, I was in the bathtub—what a laugh I drew from my classmates!

F. Elise Bede Swan '44 JC

**N**OVEMBER 19: Evidently Old Man Depression had us in his clutches. The Seniors gave a depression dance for the purpose of raising money. The Hall was most appropriately decorated with patches and placards which seemed to betoken the condition of most of our pockets. Anyway the dance was a success, and all seemed to get their ninety-nine cents worth of pleasure.

From the school calendar in *The Delphic*, 1933

Soccer; the Gazebo; McKlintock's Institution for the Demented; Tiger Hunt; the Girl's Dorm; "The Tree"; Outward Bound and Outdoor School; river trips; Paul Gerhardt.

Brent Erensel '74

Class weekends and Senior Skip Day at my parents beach house; our walks to the concerts from 13th and Hall to the Civic Auditorium as a boarder...

Gloria Spencer Crowson '49

Initiation... I remember one year the girls had to crawl, blindfolded, through flour, mush, and noodles.

Helga Daret, teacher at SHH in '50's, '60's and '70's

Class outings to Lake Oswego, Neskowin, Mt. Hood; the volleyball and tennis teams.

Barbara Jean Freeman Hinman '49

Rolling the teachers' cars onto Nicol Road and blocking all incoming traffic for April Fool's Day; watching soccer matches on cool fall days; the view from the dorms of the apple trees and the little forest; ski team, only because I wanted to hang out with my beau (but the terror of skiing fast was good for me).

Autumn Alexander-Skeen '74



▲ *Relay team members relax on the sidelines of the Yanagitani Track, 1991.*

▶ *The Archery Club of 1935 poses on the grounds of St. Helens Hall.*



Skiing on weekends with Helga Daret and Karen Barner—not eating all day long and then each eating 1½ homemade greasy donuts on the way home.

Nancy Cannon Goodell '54

The class precedence: "Do not step on the school crest"; seniors wearing caps and gowns once a week during the last semester.

Joanne Henry Kreutzer '54

Some of my most vivid—even traumatic—memories of The Hall centered around meals in the Great Hall. I remember reading the School's Book of Rules before I started teaching and was terrified at the number of pages devoted just to dining hall decorum... I lived in terror the first few days wondering what hideous faux pas I would commit! I'll never forget the night when... Miss Kleinschmidt



◀ *Members of the Court of the 1958 May Fete gather around Queen Nora Binnicker '58.*

## Still the Everglade

Many St. Helens Hall and Junior College alumnae have fond memories of the leisurely weekends they spent at Everglade, a house on Lake Oswego purchased in 1930 to be used for recreation, including swimming, canoeing, motor boating and tennis.

Appropriately, the Everglade is now owned by an alumna of St. Helens Hall, Shirley Fulton Coan '32, who moved there with her husband and three children in the 1960s. The house remains much the same today as it was in the '30's. In 1950, The Rev. Lansing Kempton purchased Everglade from the Sisters who directed St. Helens Hall, but made only minor changes to the house. Shirley and her husband Ralph have remodeled the house over the years since they bought it, but only under the original roofline.

The dormitory for the girls from St. Helens Hall and the Junior College is now the master bedroom, and the many



*Everglade, then and now.*



small bathrooms (which "never worked," Shirley laughs) are now a galley kitchen. There

were bedrooms upstairs for the Sisters, which later served as bedrooms for the Coan's children. The Coan's family room now lies where St. Helens Hall girls and the Sisters used to gather for chapel services on Sunday mornings.

Many of the same huge fir trees still surround Everglade, although a grove of about twenty which stood by the lake were cut down by Father Kempton, presumably because they blocked the view.

Shirley, who was a school teacher for many years in West Linn and Lake Oswego, and remains a flourishing watercolor artist, has many memories of her times at Everglade as a student at St. Helens Hall.

"I remember the Sisters used to pull their habits up and tie them behind their backs, to go out in the canoes and motor boat," she laughs. "We had a lot of fun here!"



▲ *Students from St. Helens Hall enjoy their moments away from studying in 1886.*

suddenly landed behind me and announced to my table and several adjoining tables, "Mr. Clarkson, we do not put our elbows on the table."

**Don Clarkson, English teacher at BDH, 1960's**

When my bra broke at an OES soccer game and I took it off on the field; playing hooky with S.D.K!  
**Paige Parker Kuni '84**

Cheering on our mighty boy athletes at games; ringing the bell; the Great Hall—here we could social-

ize the best, outside of the woods, that is!

**Marjorie Anderson Cesolini '71**

I was once reprimanded by Miss Saxon (who we secretly called "Mighty Mouse"). I was sitting around a dining hall table

eating donuts with some students. We each helped ourselves to one and began eating. Well, Miss Saxon called me in after lunch, and chided me, "You never take a bite out of a donut—you break it first."

**Helga Daret, teacher at SHH in '50s, '60s and '70s**



▲ *The 1978 yearbook staff revels in the autumn leaves outside the OES dorms.*

Leaving the grounds to Bush's Drug Store for a Coke—and being severely reprimanded!

Geneva Summerset Fraser '43

I do remember a couple of [pranks] that stood out because they were clever and also simply because they were so rare. My favorite was the Trojan Horse prank when several resident boys sent a large crate with no name on it to the girls' dorm. The dorm mother left the crate in the lounge



▲ A group of equestriennes from St. Helens Hall on their mounts, 1930.

◀ OES students adjust equipment on an outdoor trip, 1990s.



▶ A group of St. Helens Hall Junior College students in a production of "Toys," 1946.

### Participation, Top Facilities and Fun: A Winning Combination

In the past twenty years since Athletics Director Kris Van Hatcher '70 first joined the staff at Oregon Episcopal School, its sports program has changed a great deal.

"We've always had strong teams," Kris emphasizes, "but in the past ten years the sports program has really gotten stronger."

Over the past five years, more than 80 OES athletes have received individual recognition including All-League and All-State honors. The girls soccer team won the State Championship in 1993, and the boys track team was the District Champion in 1994. OES fencers have been the State Champions every year since 1988, and both the girls' and boys' tennis teams have won the State Championship for the past two years, with the girls' team taking the singles championship and the boys' winning the doubles championship for the last two years.

The success, Kris says, can be partly attributed to a variety of

facility changes at the School. The new Yanagitani track, donated by OES parents Kazunori and Tei Yanagitani in 1988, the addition of SPARC during the same year, and the improvements to the School's three outdoor soccer fields have given the sports program an extra edge, in both practice and competition.



Since Kris became the head of the program 10 years ago, he has also made a real effort to create a philosophy among his staff which reflects the belief that success in athletics is only part of the equation. Participation and fun, he says, are just as important. He also emphasizes that a great deal of the success of the OES athletic program can be attributed to a staff that follows through on this

philosophy and brings it out in the students who participate.

The "no cut policy" means that as long as students have the desire to play, they can be members of a team and will play on a regular basis, regardless of their level of achievement. OES has had 80% participation over the past ten years, despite the challenge of balancing schoolwork and sports.

"It's got to be difficult," Kris acknowledges, "But I really believe that it makes the kids more organized overall, and gives them more energy."

Another tribute to the success of the athletic program at OES came when four of its coaches—Kris, Coleen Conkey, Mike Devenney and Rich Sherwood—were named Coach of the Year on either the District or State Level during the 1993-'94 school year.

"The bottom line is that OES is blessed with talented kids who are also really intelligent," Kris says. "Kids can get an excellent education at OES, as well as a strong athletic program, where they'll play more and get more individual attention than at other schools."



▲ *St. Helens Hall students from the Ski Group of 1951 pose on Oregon slopes.*

and when everyone was in their rooms, the boy inside broke out and opened the dorm doors to several more boys who promptly partied with the girls!

Don Clarkson, English teacher at BDH, 1960s

The carnival fundraisers, sports with BDH and father-daughter dinner were fun...

Nora Brydges McMillan '68

I remember the novelty of going with the nuns to Lake Oswego retreats.

Elizabeth Parker Belles '44

I remember wearing a white dress in a program of some sort, and being asked to hold the American flag. I was never so honored in my life!

Doris Henningson Harkson '20



▲ *The basketball team of 1933, which was undefeated for six years.*

The Great Hall holds a lot of memories for me; that's where it all happened. [It was] kind of like a comfortable family room with someone always there to shoot the breeze.

Kevin Shilling '86

OES is suffering from an identity crisis. The Falcon has traditionally been our mascot, but recently there has been talk of changing it to the Aardvark. After all, if the mascot represents the School's athletic image, which beast does our athletic prowess more closely resemble, the clumsy Falcon or the noble Aardvark?

From *The Aardvark*, 1982



▲ *Members of the 1993-94 State Championship girls' and boys' tennis teams pose with their trophies. Coaches Mike Devenney (far left) and Coleen Conkey (far right) were both named State Coach of the Year.*



▲ *Doris Harkson '20 holds the American flag during a 1917 flag ceremony.*



▲ *St. Helens Hall girls and their fathers gather together for the 1966 Father-Daughter Banquet.*



# Easting Alliances



▲ *Students from St. Helens Hall during the 1880s.*

What I treasure is the unique brother-sister relationships we all had with fellow students and teachers. A time in my life when I learned to appreciate all types of individuals; meetings in the Great Hall; quick runs to Dunkin' Donuts; John Kerslake—hilarious, entertaining and hyperactive; many of us spent all of our breaks at the Gazebo, talking and getting to know each other better.

Elizabeth Laun Ursin '79

There are many memories, mostly of the friendships, and shall we say "youthful exuberance" there. Further, it was "in" and not looked-down-on to study and work hard to achieve.

Gloria Ross Grenfell '44

Sitting on the grass near the Greek Theater, enjoying the sun with whoever had that period free (or decided to make it free that day!)

Shauna Cooper '89

After I graduated, I missed the opportunities for forming and developing friendships. The close contact provided many hours of discussions, fun times and support and encouragement!

Nora Brydges McMillan '68

I miss the people who I met and became friends with and I know that no matter how much I try it'll never be the same again.

Zeenat Potia, Exchange Student from India, 1991-1992



▲ *Rose Bardel, who retired in 1994 after teaching at OES for 20 years, with Lower School student Michael Thanbouser.*



▲ *Ross Thompson and Elizabeth Hight, members of OES' Class of 1986, greet each other on campus.*

*"For the next few days, you don't have to think," quotes Ed Rubovits at a senior meeting just prior to the exciting days before graduation. Seniors, tanned from rafting and relieved to be finished, floated through a blur of photo sessions, awards, rehearsals, presentations and visiting family members....After years of "agreeing to disagree" (another accurate quote from Ed), they all finally united in the common purpose of attaining a small green folder with their name inside.*

From the  
*Legend Delphic,*  
1993



▲ *Elvira Crellin Cartwright, Class of 1875, and Maria Clopton Jackson, Class of 1881, photographed with unidentified children at the 1948 reunion of St. Helens Hall.*



▲ OES Lower School students pause long enough for a quick photograph during the 1980's.



▲ Katie Adams, Heather Laird and Tracy Sheetz graduated in 1994, having attended OES for 14, 13, and 12 years respectively.

# Out of Bosnia

Refugee leaves war behind — with a little help from her friends

By AUTUMN ALEXANDER  
Of the Herald-Republic

Tanja Horvat is about three weeks late for the 20th reunion of her Portland high-school class. But that she escaped from war-torn Sarajevo at all and is due to arrive in the Oregon city today is a dream come true for her former classmates.

Horvat, who graduated from Oregon Episcopal School in 1974 as an exchange student from what was then Yugoslavia, became a Bosnian war refugee who fled to Munich, Germany, with her young daughter.

But after a coast-to-coast effort involving her former classmates, exchange parents, and the high school's current administrators, Horvat, 38, and her daughter Ivana, 6, will begin a new life in the United States.



▲ Tanya Vasiljevic Horvat '74 on an Upper School camping trip during her senior year at OES.

◀ Excerpt from the July 18, 1994 article in the Yakima Herald-Republic, written by alumna Autumn Alexander-Skeen '74. Tanya Vasiljevic Horvat '74 has joined the staff of Oregon Episcopal School as a laboratory assistant in the science department.



▲ OES third graders present Kathy Gross with a handmade quilt on the occasion of her retirement from teaching after 30 years at OES, in 1994.

◀ The graduates of 1958 gather on the steps of St. Helens Hall.



▲ *The Class of 1991 parades around the courtyard of Trinity Episcopal Church.*

▶ *The first coeducational class of Oregon Episcopal School, in Senior Park on the Nicol Road campus in 1972.*



*On May 12, 1994, faculty member Jack O'Brien spoke to students, faculty, staff and families as the speaker for the annual Mount Hood Memorial Lecture.*

*Following are excerpts from his talk:*



**W**e are assembled here today to remember and reflect upon the lives of nine individuals who are an important and vital part of the OES community. Their names and memory will forever be a part of this institution and of our lives.

Fr. Tom Goman  
Erin O'Leary  
Patrick McGinnis

Marian Horwell  
Tasha Amy  
Richard Haeder

Susan McClave  
Eric Sandvick  
Alison Litzenberger

Eight years have passed since that terrible month of May and I am forgetting things I thought at that time would be impossible to ever forget. That period was, without question, one of the most significant events in my life, and, I know, for many of you as well...

The students we remember today were a lot like you in their interests, their passions, their highs and lows, their constant struggle to find out who they were...My father died that same year and I spoke at his funeral about those lost on Mt. Hood and those struggling to cope with survival. I said that I have come to realize that life was like a book and that the number of pages one had was not as important as the quality of each page. I made a promise to try and fill each page of my book with something of quality...

In closing I would like to mention two people who survived the tragic accident...Brinton Clark sends word through her parents that she is using her drawing skills to illustrate health posters for the inhabitants of a tiny village in Ghana where she works trying to improve the quality of life for people so desperate for care and hope...Giles [Thompson] dropped into the office the other day with his fiancée Marie Lorraine and their 5 month old son Lewis. As we sat talking, catching up on all the years, I looked at Lewis and I thought to myself that this is what this special day is all about. It is about remembering the past for the promises made, for the lessons learned, and it is for looking to the future.

## ST. HELEN'S HALL

Portland, Oregon

### DRESS REGULATIONS (FOR THE BOARDING DEPARTMENT)

#### FOR THE STREET:

A suit or dress for Church or town.  
Two or three blouses, (silk, voile or linen.)  
A long heavy coat, also coat for rough wear if desired.  
Two simple hats.  
One pair of oxfords, pumps, or high shoes.  
One pair of overshoes or galoshes and one umbrella.

After November 1st every girl is required to have for street wear either high shoes, spats, or woolen stockings.

#### FOR DINNER AND HOUSE

Short sleeves allowed, but *no sleeveless dresses* may be worn in school.  
2 after- School uniform in crepe de chine, white or Copenhagen blue, with  
noon colored tie must be worn at dinner.

dresses One or two pairs of slippers or pumps.  
also One or two party dresses with suitable stockings and slippers. (Short sleeves allowed, but *no sleeveless dresses*.)  
Plain colored silk stockings may be worn after school hours. (These are not necessary.)

A white dress or uniform for Commencement.  
Only light-colored powder may be brought into the school.  
Socks may not be worn by girls of the Upper School.  
One light-weight sweater, school colors, white, tan, or white and school colors combined.

All articles of clothing must be plainly marked with the full name in woven name tapes which can be obtained at Olds, Wortman & King's, Portland, Oregon.

#### FOR SCHOOL AND SPORTS:

All sleeves must be elbow or full length.  
Two navy blue, tan, or dark brown woolen dresses—St. Helen's Hall School regulation dress, middy style.

Two Copenhagen blue, light blue, tan or white linen or cotton dresses of the above style for warm weather—not silk.

One heavy sweater, school colors (dark blue or red) or white or tan—not striped or figured. One sport hat.

One pair heavy oxfords or shoes (low heels), black or brown.

Stockings: plain cotton, lisle, or woolen, dark blue (light blue or white with the light dress), brown, black, or tan—not silk.

Ties may be school colors (dark blue or red) or white or tan for the brown or blue dresses.

#### FOR GYMNASIUM:

Two pairs of bloomers (dark blue or black.)

Two or three white, Copenhagen blue or dark blue serge middy blouses

One pair of high tennis shoes. One pair of gymnasium shoes.

One or two silk ties, school colors (dark blue or red.)

All of the above list is not necessary, but is the maximum amount allowed.

The Official School dress may be secured at Olds, Wortman & King's, Portland, Oregon. Design and sample sent on request.

◀ *The first graduating class of Bishop Dagwell Hall gathers for commencement exercises in Senior Park, 1967.*

AS I GAZE AT YOUR IVIED walls, I think of a great many things. You have come to mean a great deal to me. I can never thank you enough for the opportunities you have opened to me. I can attend a class which interests me, taught by a person I respect more as a friend than as an overseer. My silent worship in Chapel brings peace into my heart and gives me strength. As I walk down the hills with the laughing girls I have a wonderful sense of belonging... And it comes to me suddenly that I love St. Helens Hall.

from  
*The Delphic,*  
1948



▲ *Graduates of the Class of 1942 were honored on the occasion of their fiftieth reunion at the 1992 graduation of OES.*

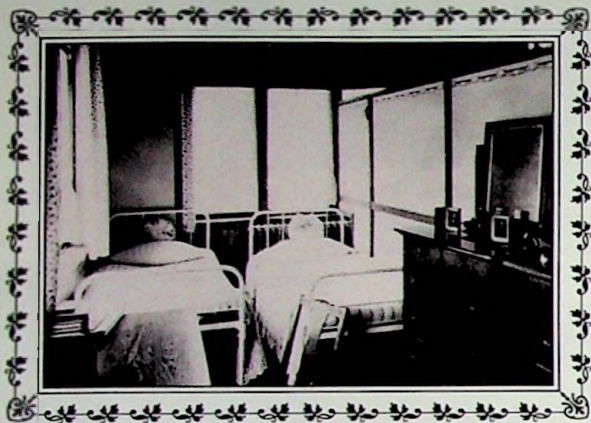


▲ *Students from St. Helens Hall, pictured on the grounds of the original site of the School where Portland's City Hall now stands.*



▲ *The Class of 1890.*

# Boarding Life From Scott Hall to Jackson House



▲ A typical dorm room in Morris Hall, at St. Helens Hall in the 1920s.

I won't miss the Saturday morning "neatness check" of my room and the darning lesson each week!

Lillian Brooke Austin '35

I miss the camaraderie the most and battling to get into the showers and baths the least...

Joanne Henry Kreutzer '54

I was not only a two-year boarder but I returned as a non-student for a year while I attended practical nursing school; the times most difficult were most of the time—it was hard being away from my family, [but] I was glad and gratified for the opportunity and experiences the Hall offered.

Nancy Mooers Holman '56

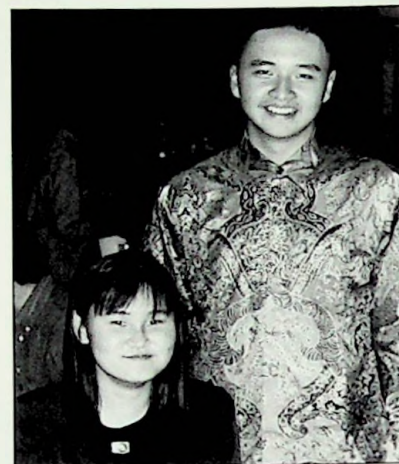


After I graduated I missed being a part of the OES dorm family. Being an international student, initially I had to struggle with being so far away from home and my friends, but before I knew it I had a strong support system at the OES dorms...I miss our marathon movie sessions and the discussions in the dorm parents' apartments...I miss my room with the tall french windows in the girls' dorm.

Zeenat Potia, Exchange Student from India, 1991-1992

▲ Dorm students from St. Helens Hall gather in the residence ball in 1965.

I remember the last night of the school year when several boys found a snake and put it in Norman's [Norman Frink '70] bed. We all hung around the lounge that night waiting for his reaction.



▲ Cousins and OES dorm students Retna Wulandari-Surya '94 and Fredy Surya '93 pose for a photograph during a residence ball dinner.

Nothing. The next morning there was never a comment, and he just packed and moved out with the rest of the kids. It was months later during dorm redecorating that workmen moved out his bed and found the dried remains.

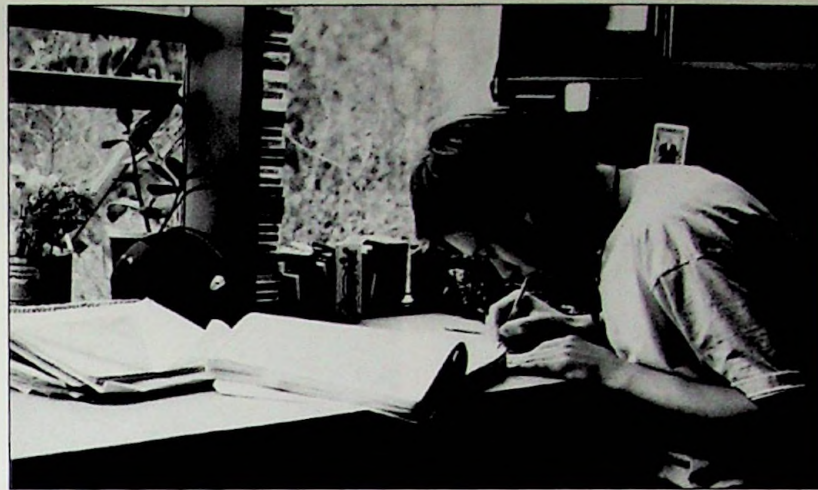
Don Clarkson, English teacher at BDH, 1960s

I remember popcorn balls sold in the dorms; fire drills in the middle of the night and tearing out our curlers so no one would laugh; learning how to live with others and to get up, washed and dressed in 7½ minutes!

Marjorie Anderson Cesolini '71

I remember the nuns would come down the halls ringing a bell very loudly to wake us up in the morning. If we didn't immediately throw back the covers on our beds, we got what was called an order mark. If we left out a pair of slippers, we got an order mark for each slipper—not one for the pair! One night after we got in bed I peered over the partition in the bedroom [the beds were in cubicles, with only a partial wall partition] to giggle and talk with my dormmates. Sister came in with a flashlight and caught me in the act. For my misbehavior I received a conduct mark, and I believe it took 10 order marks to make a conduct mark. Although I don't remember my punishment, if it was cleaning classrooms I must have been busy!

Geraldine Hanny Sargent '35



▲ Toby Menely '94 studies in his dorm room.

**IN ADDITION to the ordinary supply of good, plain, underclothing, each pupil should bring a dressing gown, two Balmoral skirts, (heavy and light), two black alpaca aprons, umbrella, waterproof cloak, overshoes, napkin ring, two yards of carpet for the alcove, and a clothes-bag. White petticoats will not be allowed in the wash from October to May. It is especially requested that underclothing be without ruffles or puffs.**

From the *SHH Catalog*,  
1870



I remember that World War II put a decided crimp in our activities. I boarded the last 5 months of my senior year and the activities were rather dull! We—four of us, because we were seniors—had a great view north as we lived in the old building, upstairs by the Sisters [in] their little cubicles where they lived.

Geneva Summersett Fraser '43

◀ May Sophonpanich '92, a dorm student from Thailand, unpacks for the new year.

The day that President Kennedy was shot, we were all brought into Scadding Hall. Mrs. Farris talked to us and I noticed that she was wearing black. I looked around and saw that Mrs. Christensen, the librarian, was also in a black dress. Then they sent us up to Chapel, and as I walked in I saw Mrs. Paige, our math teacher, in black. I always thought that was so strange—all of them got up that morning and put on black, as if they already knew.

Susie Kasper '65



▲ Relaxing in the Junior College lounge during the 1940s.



▲ OES international students Dwijaya Surya and Ni Sophonpanich at their graduation in 1990.



▲ Dormmates at St. Helens Hall prepare for their classes, 1945.



▲ International dorm students gather on the steps of Rodney House on the Nicol Road campus, in 1983.

One of my most embarrassing memories is the night rumor had it that several boys were out in the woods smoking cigarettes, so all four dorm masters rushed into the rainy darkness tripping down different paths in the forest trying to catch the criminals. We could hear them always just ahead, but of course we never found them. I laugh now to see myself and the others dripping wet, scratched from the bushes, collapsing back at the dorms probably only moments after the culprits had returned to their rooms...

Don Clarkson, English Teacher at BDH, 1960s

Probably the dorms hold the most memories for me. I was in what is now called Jackson House for 3 years. I lived there, did my homework there, snuck out at night from there and formed lasting friendships there.

Nora Brydges McMillan '68

SITUATED ALONG APPLE TREE LANE is the "humble" domicile of the "Seniors Great." Residing within are fourteen Seniors, three Juniors, one persevering housemother and a dog. Busy is the telephone line from BDH. Activities range from bull sessions at 1 a.m. on colleges to "come-as-you-are-mattress-throws." Always before a big test you'll hear voices late at night confidently saying, "If I don't know it by now, I never will." And then you hear a 5 o'clock alarm!

Chris Biebe '67,  
from  
*The Nickelodean*

As a boarder, Saturdays were very special days for which we were, on our honor, able to walk to town for lunch and shopping—UNESCORTED!

Susanne Ehrhardt Malone '39



◀ *Moving in, 1984*

## Welcome to the Dorms!

Over the years since the School opened its doors on September 6, 1869, OES has enrolled boarding students from all over the country and the world. With more than half of the 1994-95 boarding population from African, Asian and European countries, OES dorm students and their "dorm parents" have entered the School's 125th year as a truly multicultural community.

Art Horst, new director of residence, feels good about internationalism at OES. The Wesleyan and Columbia University Teacher's College graduate, who attended an independent school himself and later taught for years at Deerfield Academy in Massachusetts, feels that students get a clearer picture of themselves and the rest of the world when they can learn about different cultures in a living situation.

At OES, there is the attempt to match each international student with an American student in a room, with the belief that this broadens each student's global perspective every day. Throughout the year there are programs, dinners and events that capitalize on the diversity of the students' backgrounds, and help foster the sense of an international community.

Art also emphasizes that one of the most resounding qualities of OES is the truly extraordinary nature of the faculty.

"For a young faculty member, the deep sense of commitment in the OES faculty is a wonderful thing to see," he says.

OES and its boarding community are blessed with a staff of committed professionals, all of whom will be teaching in addition to their duties in the dorms. Martha Horst, Art's wife, ran a dorm at Northfield Mount Herman in Massachusetts, with a student population very similar to that at OES. Japanese teacher Rich Sherwood and his wife Christa have moved into the dorms this year with their sons Bobby and Mason. Assistant Director of Admissions John Capen has returned for his third year as a

teach biology and anatomy. Lukie and Jonathon Wells will be living in Morris House as dorm parents and plan to lead several camping and cultural trips throughout the year.

Students from Fairbanks, Alaska, to Sewicky, PA., and fifteen other countries are living and learning in the dorms, and some of them are part of the new prefect system in the dorms. Now in its second year, this leadership program involves eight boarding students who have been selected by the dorm parents for the cooperative effort of "managing" the dormitories. Some of their responsibilities include assigning and monitoring student job

duties, assisting dorm parents with study hall, handing out "strikes" and dorm restrictions for violations of minor dorm rules, and participating in Peer Support, a guidance program provided by OES counselors.

Art Horst feels that this system is very positive,

because it gives dorm students some ownership of what goes on in the dorms on a day-to-day basis. He also emphasizes that the program, although young, is self-perpetuating: if the kids have a good experience with the prefects, this makes them want to become prefects themselves.

"These kids are our pioneers, and they have a big responsibility!" he says.



▲ *The 1993-1994 OES boarding community gathers outside Rodney House.*

dorm parent, and continues to concentrate much of his recruitment schedule on potential additions to the boarding program.

LS counselor Imogene Hollis is spending her second year in the dorms, and Matt Sipple (son of Peter Sipple, former OES headmaster) returns to the staff of dorm parents, and will serve as US yearbook advisor in addition to other substitute teaching duties. New to the dorms is Diana Kornet, who recently taught in San Francisco after graduating from Dartmouth College. She will





▲ Lydia Reynolds '62 SHH



▲ Rebecca Reynolds '67 SHH



▲ Chuck Reynolds '69 BDH,  
Former OES faculty member,  
Current OES Parent

# 125 years ago...

*Fall 1994 signalled the beginning of the 125th anniversary of Oregon Episcopal School. Throughout the past century and a quarter, the loyalty of the School's former students, faculty, staff, parents and extended families has remained true, as a tribute to the strength of its academics and to the spirit within its walls.*

*One of the finest examples of this allegiance has been displayed over the past five decades by the Reynolds family. All four children of Carl and Mary Reynolds were enrolled in and graduated from the School during the '50s, '60s and '70s. Carl Reynolds and his father were both faculty members at St. Helens Hall.*

*Now, a new generation of Reynolds are attending Oregon Episcopal School. Lower and Middle School students Mackenzie and Margaret Reynolds are the children of Chuck Reynolds '70 BDH and his wife, Chris. Chuck was, himself, a member of the faculty of Oregon Episcopal School after graduating from Bishop Dagwell Hall.*

*Sadly, Mary Reynolds passed away on April 13, 1994, and will be missed by the*

*entire OES community. For this issue of The OES Belltower, Carl Reynolds has written a story of the beginnings of their family's involvement with the School. The "second chapter" will follow in the spring edition of the magazine.*



When my youngest daughter, Kathy, was graduated from the OES Upper School in 1971, my wife Mary and I calculated that our four children had been involved in over 50 years of education at St. Helens Hall, Bishop Dagwell Hall and Oregon Episcopal School! How did this happen, and what brought about such loyalty?



▲ Carl Reynolds,  
former parent and  
faculty member,  
and grandparent of  
current LS student  
Mackenzie and MS  
student Margaret.

I will have to start out by saying that it was my wife Mary who got me involved. It was she who was searching for a pre-school for our second oldest daughter, Becky, and discovered the St. Helens Hall pre-school on the old downtown campus at 13th and Hall Street. At this time our oldest daughter, Lydia, was attending a public school on the East side of Portland, and Mary had joined their PTA. Mary became aware that she was having problems in her class. We were about to move to the West side of town, and decided to try our daughter out in the 4th grade at St. Helens Hall.



▲ Kathy Reynolds '71



▲ Margaret Reynolds, OES Seventh Grader; Daughter of Christine and Chuck Reynolds '69 BDH



▲ Mackenzie Reynolds, OES Fourth Grader; Son of Christine and Chuck Reynolds '69 BDH

There, her teacher noticed at once that Lydia seemed to have trouble seeing. She would come to the front of the room to sharpen a pencil, in order to see what was on the blackboard. The teacher suggested that we have her eyes examined, and we were shocked to find that she couldn't read the big E on the eye chart!

With proper glasses, the whole world became clearer for Lydia. The value of the small classes, personal attention and very caring teachers was dramatically evident to us. We soon found that this was characteristic of the School. Mary quickly became an active parent, attending meetings, joining work parties and learning about the School.

One of the things we learned early on was that the School was in a very precarious financial condition. When Mary and I became involved in 1953, Gertrude Fariss had been asked to take over as the head of the School. She had taught there her-

self as an English teacher, and then had been appointed the head of St. Helens Hall Junior College for 15 years. After the Junior College was closed in 1947 (which she deeply regretted), there was a period of uncertain leadership, until Mrs. Fariss was brought back to take charge of St. Helens Hall in 1954.

She had the challenging task of maintaining the School's high academic standards, small classes, and high moral and spiritual reputation with a most inadequate budget. Mrs. Fariss, by this time, had excellent connections with the academic world, and a talent for finding dedicated and highly qualified teachers who were willing or able to teach for embarrassingly low salaries. This was possible, of course, because the teaching conditions were so favorable, but it was not a healthy situation, and one of which Mrs. Fariss was acutely aware.

Enrollment was always a critical problem. The boarding department was financially the strongest branch of the School. St. Helens Hall had always been a boarding school, one of the few still available in the Pacific Northwest. Parents with girls from remote locations all over the West sought it out. The Upper School was hard put to find space for those wanting to enroll. There was more room for day students, however, and the problem was that of making sure that the School only admitted students who were qualified.

This Mrs. Fariss did with rigorous protection of the School's academic standards. She was very good at suggesting positive alternatives to parents whose children did not meet the School's requirements. As Mary and I became more familiar with the operation of the School, we realized it was worth all of the support we could give it.

The rising financial pressure had resulted in many neglected aspects of the physical plant. The front entrance area of the School had become overgrown and unsightly. The rose garden had disappeared amid tall grass, bushes and overgrown trees.



▲ Mary and Carl Reynolds (left and middle) in the 1950s.



▲ *Carl and his father Charles Reynolds, who was also a faculty member at the School, clean up the front entrance of SHH with help from Rebecca (Class of 1967 SHH) and Chuck (Class of '70 BDH).*

My father, a professor of sociology at Stanford University, had recently retired and returned to Portland where he had grown up. He and I undertook to clean up the School's front entrance. We felled a number of trees, while Mary stood in the street to stop any traffic as one of the larger ones came down (I do not remember that we had any permit to do what we were doing!). We cleaned out up the area and had George Otten, a

landscape architect working on our own property, do some planting around the entrance leading up from the street to the front entrance door. That fall, the traditional Old Girl-New Girl Tea was held in the greatly improved front yard of the School.

Across 13th Street from the main buildings, the Pre-School was relocating to the lower part of the old Multnomah Athletic Club wooden building, the upper part of which was being torn down. Parent work parties were called for, and Mary and I joined many others in cleaning, painting, and laying tile on the floors.

Much *esprit de corps* was generated by those work parties. A number of parents were able to donate materials, or ask others to do so. Elizabeth Wright was the head of the Pre-School at that time, and we built a children's tree house in her honor. Another needed item, a covered play area for Lower School children, was created at this time.

A more threatening matter of this era of rejuvenation was the need to meet the requirements of the fire marshal, who was threatening to close the School. By this time Mary was a member of the Board of Trustees, so we knew the full story of the School's financial distress, and how real the threat of being closed actually was.

It was unthinkable that the School be closed, and the necessary funds to prevent this from happening were raised. In fact, a number of fundraising activities were launched by the Board and a group of active and committed parents. One was an annual hobby and antique show, which eventually evolved into the Country Fair.

Another crisis that came up was of a different nature. Just as the School was about to begin a new academic year, Miss McKirdie, the Upper School's acclaimed history teacher, became seriously ill and had to take the entire year off. Mrs. Fariss was in a real dilemma about how to replace her, and the upshot was that my father and I undertook to teach her classes. I was at that time teaching an introductory course in the history of Western Art and Architecture at Portland State College, and it was not hard for me to take over the Ancient and Medieval history course. My father, as an experienced lecturer in sociology, took over the modern European History course. We simply had to keep ahead of the students' assignments, and managed to do so!

All of these experiences gave Mary and me an intimate knowledge of the School—its history, traditions, finances and workings. Above all, it gave us a great respect for Mrs. Fariss and her staff and the high quality of the teachers she had assembled. There is a spirit about a school of this kind that makes one feel that there are few things more worthwhile that one can support. That is why we were ready to face a new and more grave threat to the future of the School in 1964, when we learned that a freeway was being planned to run directly through the property we had worked so hard to improve.

That, however, is another story.



*Look for the rest of the Reynolds' story in the spring edition of The OES Belltower!*



▲ *Mary and Carl Reynolds with their son Chuck Reynolds '70 BDH, in the 1990s. Chuck was also a faculty member at OES and is the father of LS student Mackenzie and MS student Margaret.*

# THE MUSTARD SEED

*Annual Report of Giving*



*The Class of '26 parades on their graduation day.*

*"... verily I say unto you, if you had faith as a grain of mustard seed you shall say unto that mountain remove hence to yonder place and it shall remove; and nothing shall be impossible unto you." Matthew 17, verse 20*

**Oregon Episcopal School**

## HEADMASTER'S REPORT

Dear Friends,

This Mustard Seed shares with you a record of the School's health as we stand proudly, ready to take bows in celebration of our 125th Anniversary. In these pages, we bear witness to the service and generosity of friends during 1993-94, squarely in the tradition that is a hallmark of our years.

1993-94 was a year of extraordinary faith in and support for Oregon Episcopal School. We achieved a record-breaking OES Fund. We concluded the best auction in the School's history, in support of our faculty and staff. We began securing funds to make the visionary dreams of the Master Plan come alive. Our enrollment of just under 700 students met our strategic goals for the year. We have poured more attention into our physical plant. And we have continued growing our endowment and other reserves to provide protection for the future.

I add my admiration and thanks to Board President Elisabeth Lyon's tributes to our superb volunteers, with whom we have flourished. And I particularly applaud our faculty, who are, as Elisabeth boasts, the heart of our School. The quality of their lives at OES and their dedication to children exemplify our 125-year tradition of teaching and learning.



▲ Peter Stevens, Headmaster

We are ever mindful of your care, thoughts, and support. You help give us the strength to be the School you love. Thank you.

Sincerely,

Peter W. Stevens  
Headmaster

### Oregon Episcopal School Board of Trustees 1993-1994

The Rt. Rev. Robert L. Ladchoff,  
*Chairman*

Elisabeth Lyon,  
*President*

Christine Kitchel,  
*Vice President*

Jack Spring,  
*Treasurer*

Paul Schlesinger,  
*Secretary*

Charles Adams  
Peter Bechen  
Marty Brantley

The Very Rev. C. Roy Coulter

Harriett Dixon  
Wayne Drinkward  
Bob Durst

Sean Gilronan  
Betty Hedberg

The Rev. Lucy Houser  
The Rev. Robert Morrison

David Pratt  
Katherine Sotka  
Dale Stewart  
Sydnie Waskey

Peter Stevens,  
*Headmaster*

Anne Thanhouser,  
*Chair, Volunteers' Common Link*

Sean Kuni '81,  
*Alumni Association President*

## REPORT FROM THE PRESIDENT OF THE BOARD

Dear Friends,

**N**ow that the 124th year of Oregon Episcopal School has ended, and we have begun the commemorative 125th year, I want to share with you the state of our School and the work of some individuals who have helped to make it such a strong institution. The Mustard Seed provides the opportunity to not only report to you but also to say thank you. The successes of the last year are due to the efforts and the generosity of many people.

Financially OES is in excellent health. In the past year all external debt has been eliminated, the endowment has increased and the budget has been well managed. Prudent planning has permitted increases in the maintenance account and monies for the purchase and expanded use of computers.

Interest in attending OES is strong. Our classes and our "wait pools" at all grade levels are filled, and by talented young people. After thoughtful discussion, the Board decided to continue the enrollment at the current level and not expand the number of classes or the class size. This decision was made based on the nature of our programs and the desire to maintain their excellence.

During the past year, the Board approved a new Master Plan for the OES campus. This outlines the physical requirements of our School, which are needed to insure our excellence into the 21st century. Subsequently, the Buildings and Grounds Committee, chaired by Dale Stewart, retained architects who prepared schematic designs for a new Middle School and a substantially renovated Upper School. These plans are based on the programmatic needs of each division and were



▲ Board President Elisabeth L. Lyon and her son, OES fifth grader Baker, on Opening Day 1994.

developed in conjunction with the faculty. Implementation of the new Master Plan is the largest undertaking by OES, since our School moved to the current campus in 1964!

The participation of volunteers over the past year was exceptional. Anne Thanhouser and the Volunteers' Common Link organized many hours of volunteer commitment in all three divisions of the School. Wendy Hamilton and the creative Auction Committee raised a record-setting \$117,000! And we all will long remember that evening and the fun of being "Wild Things!" With the talented leadership of Pat Karamanos, the 1993-94 OES Fund reached a new high and exceeded \$331,000! Sean Kuni '81 and the Alumni Association planned numerous events, which brought even more alumni in touch with current life of the School. OES now has a school store, the inspiration and work of parents led by Darlene Kaempf. And thanks to the 125th Anniversary Committee, co-chaired by Sheryl Acheson and Meridel

Prideaux '59, our celebration year is filled with very special occasions.

To our faculty I want to express my great appreciation. They are the heart of our School. Many of the successes of the past year are due to the commitment, work and leadership of both our faculty and our administration. I want to thank our Head, Peter Stevens, both for his management of ongoing operations and his vision and planning for our School's future. His three able division heads: Anne Cass, Charyl Cathey and Harvey Zendt, in addition to the Director of Development, Sue Nicol, and Director of Admissions, Louisa Zendt, have worked tirelessly.

My colleagues on the Board of Trustees have been diligent and thoughtful participants in the discussion and conclusion of numerous issues this past year. In particular, I want to express my appreciation to the Executive Committee. The Right Rev. Robert L. Ladehoff, Sean Gilronan, Chris Kitchel, Jack Spring and Paul Schlesinger have provided great wisdom. This past year the Drinkward Award, which acknowledges outstanding leadership, was given to trustee Peter Bechen. He has served the Board in many capacities including Treasurer and Chair of the OES Pacific Rim Council.

And to you, the friends of Oregon Episcopal School, I want to say a very special thank you. Our students and we are fortunate for your continuing support and interest.

Sincerely,

Elisabeth L. Lyon  
President, Board of Trustees

## CONTRIBUTIONS TO OES

Income: \$7,700,311

The OES Fund 3.9%

Boarding Program 5.6%

Endowment 2.6%

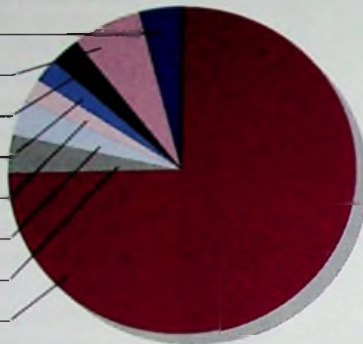
Interest 2.2%

Transportation 2.3%

After School Programs 3.1%

Other 3.5%

Tuition and Fees 76.8%



Expenses: \$7,694,857

Other 7.8%

Financial Aid 8.2%

Debt Service 2.5%

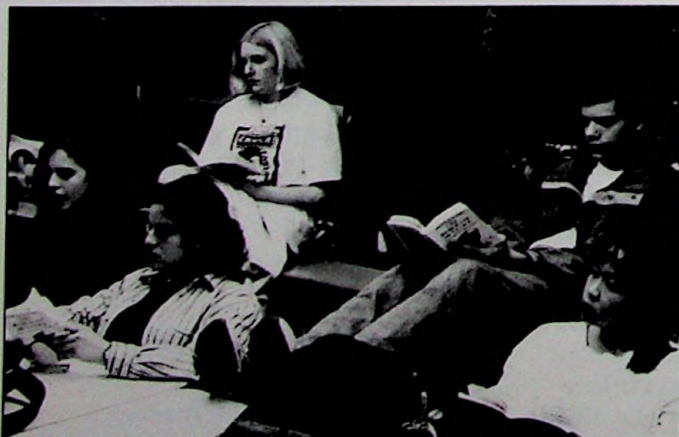
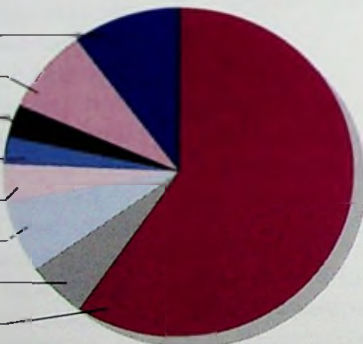
After School Programs 2.6%

Food Services & Supplies 4.1%

Plant Costs 7.2%

Instructional Support 5.3%

Compensation 62.2%



▲ Upper School students in English class.

## SUMMARY OF UNRESTRICTED GIFTS—THE OES FUND

SOURCE	DONORS	OES FUND
Alumni	384	55,460
Current Parents	423	189,388
Past Parents	100	30,087
Grandparents	72	11,502
Staff/Faculty	100	3,306
Other Friends	42	6,061
Corporations	17	5,900
Foundations	10	29,636
<b>Total (unrestricted)</b>	<b>1,148</b>	<b>\$331,340</b>

## SUMMARY OF RESTRICTED GIFTS—ENDOWMENT, CAPITAL & PROGRAMS

ENDOWMENT	
Scholarship	25,161
E.E. Ford	26,312
Other	50
MASTER PLAN	
MS Schematics	78,385
MS Design Phase	2,079
MS Construction	300
CAPITAL GIFTS	
SPARC/Fencing	1,667
Development Program	12,500
RESTRICTED FOR OPERATIONS	
Financial Aid	3,500
Residence Dept.	5,000
Wetlands Video	2,950
Other	11,679
SPECIAL FUNDRAISING PROGRAMS	
Auction	116,803
Bookfair	2,500
Wreath Sale	11,818

\*Unaudited figures

## BENEFACTORS

Oregon Episcopal School is fortunate to have the generous support of the following donors, each of whom made gifts to the School during the past year which totalled \$2,500 or more. Because of their gracious support, OES can continue to make necessary improvements to the campus, support our wonderful faculty, and build the endowment.

Anonymous	S.S. Johnson Foundation
Mr. & Mrs. Charles A. Adams	Wayne & Joan Kuni
Adams Foundation	Elisabeth & Peter Lyon
Peter & Missy Bechen	James A. & Fannie E. Malarkey Foundation
Kay & Marty Brantley	Metro
Estate of Spencer R. Collins	Mr. & Mrs. Jae Kyu Park
Cecil & Sally Drinkward	Mrs. Cynthia Coats Railton
Mr. & Mrs. Lee T. Dulin	Tom & Susan Robinson
Drs. Woodruff & Annie English	Mr. & Mrs. Chai Sophonpanich
Mr. Brent B. Erensel	The Sisters of St. John Baptist
Henry Failing Fund	Stephen & Carole Thomas
Mrs. Robert T. Foote	Mrs. J.A. Warren
James & Marilyn Frank	Mr. & Mrs. Gunther Weiss
Ted & Diane Freres	Jill & Ted Welsh
Ms. Susan L. Howell	Dr. Richard & Jana Westlund
Alan & Suzanne James	



▲ Wendy Hamilton and Peter and Missy Bechen enjoyed the revelry at the 1993-94 *Where the Wild Things Are* Auction.



▲ OES parents Kay and Marty Brantley.

## O E S E N D O W M E N T F U N D S

### Endowed Faculty Chairs

	1993	6/30/94
	<b>Allocation</b>	<b>Market Value</b>
Beatrice L. Gerlinger Endowed Chair in Mathematics	25,120	550,625
Winnigstad Chair in the Physical Sciences	17,032	373,352
<b>TOTAL Endowed Chairs</b>	42,152	923,977

### Endowed Scholarships

Anonymous	1,488	32,723
Katherine Graham Barbey Scholarship Fund	8,309	182,131
Barclay Ball-McCall Scholarship	9,412	206,322
John C. Bechen Memorial Scholarship Fund	728	15,963
Spencer R. Collins Scholarship Fund	46,600	1,025,755
Louise Donaldson Memorial Scholarship	1,556	34,109
Gertrude Houk & Cris Fariss Scholarship Fund	692	15,176
Edward E. Ford Scholarship Fund	1,913	41,924
Paul Gerhardt Memorial Scholarship	5,921	129,790
Melba Byrom Hess Scholarship	20,246	443,789
Jane Hiller Endowed Scholarship Fund	4,339	95,122
Jack S. Howard Scholarship Fund	895	19,613
Samuel S. Johnson Foundation Scholarship	1,532	33,588
Barbara Hirschi Neely Memorial Scholarship	8,737	191,513
OES Endowment	8,787	192,664
Reader's Digest Endowed Scholarship Fund	2,913	63,849
Betty Lou Roberts Endowment	1,713	37,542
St. Helens Hall Endowment	6,244	136,882
David Sellers Memorial Scholarship	990	21,690
Louise Washburn Trust	1,057	23,169
<b>TOTAL Endowed Scholarships</b>	134,072	2,943,314

### Endowed Funds

OES Memorial	Art Experience	1,667	36,763
Ruth Rose Richardson Memorial Fund	English Dept.	1,719	37,686
T.J. Kempton Endowment	Coaching Salaries	435	9,528
Faculty Enrichment Endowment Fund	Faculty Endowment	1,430	31,343
Bernice Bean Endowment	Guest Artist	116	2,548
Learning Skills Dev./Grover Fund	LS Teacher Training	1,486	32,579
Music/Economics Faculty Endowment	Music/Economic Salaries	4,288	93,985
Board Designated Endowment	Scholarships	5,624	123,274
J. Milne Manson	Student Award	29	630
Benjamin D. Dagwell Endowment	Teacher Retirement Benefits	6,973	152,851
Edward E. Ford Endowment Fund	Faculty Development	9,813	271,492
<b>TOTAL Restricted Endowments</b>		33,580	792,679
<b>TOTAL ALL ENDOWMENTS</b>		209,804	4,659,970

## GIFTS TO ENDOWMENT

### GIFTS TO ENDOWMENT

#### **Edward E. Ford Endowment Fund**

This fund was established in 1992 by a generous grant from the Edward E. Ford Foundation. The Fund provides support for the ongoing professional growth and development of OES faculty and staff. Half of the proceeds from the Wild Things Auction were directed to the Endowment. The following donor made a generous gift to the Fund.

Mrs. Robert T. Foote in Honor of her daughter  
Linda Dickinson

#### **OES Endowment**

This year, funds from this unrestricted endowment were directed toward scholarship support.

Kay & Dave Bristow

#### **Ruth Rose Richardson '36 Endowment**

Established in 1985 to honor the beloved alumna and teacher by providing support for the Departments of English, Drama, Athletics and Religion.

Ruth Rose Richardson Trust

#### **Spencer R. Collins Endowment**

Established in 1983 by a charitable remainder annuity trust created under the will of Spencer R. Collins.

Estate of Spencer R. Collins

#### **St. Helens Hall Scholarship**

Established by the alumnae of St. Helens Hall in 1957, this fund was transferred to OES in 1970 to provide scholarship support.

Charmian Kolar Hilleary



▲ Upper School students enjoy a break between classes in the Great Hall.

#### **Susan Elizabeth McClave Scholarship**

Established in 1986 to honor the memory of Susan McClave, this scholarship is given annually to a member of the OES senior class who best exemplifies a "giving spirit" towards others.

Mr. & Mrs. Richard Schuurman  
Ms. Virginia D. Tyler



▲ Chris McClave presents senior Jo-Anne Landry with the Susan Elizabeth McClave Scholarship for 1993-94.

## MEMORIAL & HONORARY GIFTS

*In Memory of Elsie Lou Carey '37*

Mr. John Halsey Jones  
Mrs. Elizabeth Netcher

*In Memory of Paul Linke*

Dr. Albert F. Macho  
Ms. Judith Parsons  
Ms. Barbara B. Trudel

*In Memory of Ellen Manson*

Mr. & Mrs. Steven J. Bitte  
Ms. Nancy Duggan  
Mr. & Mrs. Norman Hammersly  
Sue & Tom Horstmann  
James & Mary Kruchoski  
Bill & Cindi Marshall  
Mr. & Mrs. Donald McClave  
Karen & Craig McClure  
The Paz Family  
Mr. Gary R. Pope  
Mr. & Mrs. Peter W. Stevens  
Scott & Sue Nicol  
Curtis & Paula McCracken



▲ A tree was planted on the OES campus in memory of James G. Weber, beloved teacher and friend who passed away in February, 1994. Here, family, friends and students of Jim gather for the tree planting ceremony.

*In Memory of Susan McClave*  
Mr. & Mrs. Richard Schuurman  
Ms. Virginia D. Tyler

*In Memory of Mary Simmonds Musgrove '27*  
Mrs. Ruth A'Court Tunturi

*In Memory of Ruth Rose Richardson*  
Mrs. Sally Bowe Beaton

*In Memory of Mary Reynolds*

Mrs. Muriel Gabriel Heltzel  
Ms. Maryanne Hill  
Mr. & Mrs. James Holt  
Mr. & Mrs. Harold H. Keil  
Mr. Richard Meyer  
Mr. & Mrs. Kenneth R. Meyer  
Mrs. Rhoda Hollman Statter  
Milton & Jean Zell  
Mrs. Louise James

*In Memory of Phillips Stevens*  
Joe & Sharon Cade

*In Memory of Ellen Thielson*

Ms. Marilouise H. Phelps  
Ms. Jane Thielson

*In Memory of George Zendt*  
Joe & Sharon Cade

*In Honor of Noreen Calkins & Doug Whitmore*  
The Lyon Family

*In Honor of Peter & Elisabeth Lyon's  
Wedding Anniversary*  
Ned & Anne Thanouser

*In Honor of Paul Schlesinger's Birthday*  
The Lyon Family

*In Honor of Peter Stevens' Birthday*  
The Lyon Family

*In Honor of Linda Dickinson*  
Mrs. Robert T. Foote



▲ 1993 Honorary Alumna Miss Eleanor Fass, teacher at the School for sixteen years, greets former student R.E. Clenton Richardson '79.



▲ 1994 Honorary Alumna Helga Daret and Carl Reynolds were among former faculty members who attended the 1994 Reunion Weekend.

# THE OES FUND

## THE 1993-94 OES FUND

Under the leadership of the OES Fund Committee, unrestricted annual giving set a new record, with gifts totalling \$331,340.

### 1993-1994 The OES Fund Committee

Tony Adams  
*Trustee Development Chair*  
Pat Karamanos  
*OES Fund Chair*  
Carla Wilson & Kay Brantley  
*Parent Chairs*  
Betty Rennett Hooton '68  
*Alumni Chair*  
Christine Hayward  
*Past Parent Chair*  
Sally Drinkward  
*Grandparent Chair*  
Sue Stark, Craig McClure,  
Judy Lynch and Rich Sherwood  
*Faculty/Staff Chairs*

## OES FUND SOCIETIES

### Rodney Society

Sharing in the vision of the School's first Headmistress, Miss Mary Burton Rodney, the following donors expressed their confidence in OES through impressive generosity. We are grateful for their dedicated support.

### Lifetime and Honorary Members

Mrs. Ned B. Ball  
Mrs. James W.F. Carman  
Mrs. Norman Chew  
Mr. Robert Donaldson  
Mr. and Mrs. Paul Gerhardt, Sr.  
Mr. and Mrs. Robert Grover, Sr.  
Mrs. Edmund Hayes  
Mrs. Wilbur Hiller  
Mr. and Mrs. Edward S. Holden  
Mr. and Mrs. David Munro  
Mr. B.H. Sellers  
Dolores and Norm Winningstad

### Bishop's Circle

*Gifts of \$10,000 or more*  
ANONYMOUS  
Peter & Missy Bechen  
Henry Failing Fund

Ms. Susan L. Howell  
Alan & Suzanne James  
Mr. & Mrs. Chai Sophonpanich

### Leadership Circle

*Gifts of \$5,000 to \$9,999*  
Mr. & Mrs. Charles A. Adams  
Adams Foundation  
S.S. Johnson Foundation  
Elisabeth & Peter Lyon  
Mr. & Mrs. Jae Kyu Park  
Tom & Susan Robinson  
Stephen & Carole Thomas  
Mr. & Ms. Gunther Weiss

### Trustee's Circle

*Gifts of \$2,500 to \$4,999*  
ANONYMOUS  
Kay & Marty Brantley  
Cecil & Sally Drinkward  
Mr. Brent B. Erensel  
James & Marilyn Frank  
Ted & Diane Freres  
Wayne & Joan Kuni  
James A. & Fannie E. Malarkey  
Foundation  
Mrs. Cynthia Coats Railton  
Mrs. J.A. Warren  
Dr. Richard & Jana Westlund

### Rodney Associates

*Gifts of \$1,000 to \$2,499*  
ANONYMOUS  
Richard C. & Carilyn M. Alexander  
Mrs. Jane Mount Ammerman  
Stephen E. & Melissa N. Babson  
Ken & Linda Barker  
Mrs. Alyce Cheatham  
John & Deborah Chessar  
Dr. & Mrs. Edgar Clark  
Mr. & Mrs. Paul Diment  
Mr. Robert Durst  
Drs. Woodruff & Annie English  
Susan T. & Paul Farago  
The Farago Foundation  
John & Katie Garvie  
Richard & Janet H. Geary  
Mr. & Mrs. Sean Patrick M. Gilronan  
Kris & Steve Gregg  
GTE Foundation  
Bob & Kelly Hale  
Henry & Sharon Hewitt  
The Ralph & Adolph Jacobs  
Foundation  
Michael & Darlene Kaempt  
Pat & John Karamanos  
The Richard B. Keller Family  
Mrs. George A.D. Kerr  
Barry & Louise Kremkau  
Wally & Cathy Krieger  
Sean & Paige Parker Kuni  
Mr. & Mrs. W.R. Lake Jr.  
Mr. & Mrs. Peter Lin  
John & Priscilla Longfield  
Kim & Reidun Lundgren  
Mr. & Mrs. Masahisa Masuda  
Tom & Karen McClung

Scott & Sue Nicol  
Nike/Inc.  
Charles & Noreen Reali  
Drs. Joe & Maggie Robertson  
Mary & Al Rollins Jr.  
Drs. John & Trudy Samples  
Mr. & Mrs. James Sassalos  
Mr. Paul R. Schlesinger  
Gerald H. Siemens  
Drs. Bill & Barbara Spears  
John B. & Susan Spring  
Leigh D. & Mary G. Stephenson  
Mr. & Mrs. Peter W. Stevens  
Mr. & Mrs. Wm. T. C. Stevens  
Dale & Carol Stewart  
Mrs. William Swindells  
David B. & Terry Taylor  
Stephen & Meri Taylor  
Thomas D. Taylor Foundation  
Dr. & Mrs. David TenHulzen  
Ned & Anne Thanhouser  
John & Frances von Schlegell  
Mr. Hugh Walker  
Lynne Parise & Mark Williams  
Masatoshi & Susan Yamanaka  
Mr. & Mrs. Jung Ju Yang

### Headmaster's Club

*Gifts of \$500 to \$999*  
James & Jane Adams  
Aftab & Rehana Ahmad  
Mrs. Ned Barclay Ball  
Mr. & Mrs. Theodore H. Bokemeier  
David & Kathy Bussman  
Dr. & Mrs. Richard & Nancy  
Chapman  
Don & JoAnn Cornell  
Ms. Hannah Davis  
Mrs. Kuniko de Weese  
Ulla & John Drell  
Mrs. Dwight Follett  
Dr. Kristine Gebbie  
Dr. Neil Gebbie  
Steve & Amy Haessler  
Mr. & Mrs. James Harder  
T. David & Gerri Hayes  
Mr. & Mrs. Jerry Herman  
D.A. & Meredith Hilderbrand  
Gregg & Cindy Hoffman  
Alex & Elaine Johnson Jr.  
Lawrence & Barbara Kaplan  
Clyte Speidel & Paul Keown  
Jan & Chris Kitchel  
Mrs. Lenore L. Klink  
Ed & Margaret Kushner  
Wes & Nancy Lematta  
Wesley & Julie Lewis  
Gil & Jackie Lipshutz  
Beth Mason  
Ms. Atsuko Matsuyama  
May Dept. Stores Co. Foundation  
Greg & Katherine McCoy  
Mrs. Cozette Scott McGuire  
Merrill Lynch & Co.  
Kathleen Dodds & Matthew Miller  
Drs. Laurie Hesla & James Miller  
Leslie Mackenzie & Michael Morey  
Chris & Linda Morgan



▲ OES parents Kathryn and Jeff Rippey and Carrie and Todd Stucky, at the 1994 OES Major Benefactors' Reception.

Barbara Ports & Michael Moser  
Sandra S. Miles & Paul E. Norman  
Greg & Aya Peterson  
Hal & Helene Phillips  
Terry & Mei-Lin Poon  
Mr. R.E. Clenton Richardson  
Jeff & Kathryn Rippey  
Marc & Barbara Robins  
Susan & Scott Russell  
Mrs. Howard Sargent  
Lenita & Michael Scheetz  
William & Leslie Anne Scheible  
Miles & Patsy Seeley  
Mr. Paul B. Smith  
Adrienne Souther  
Todd & Carrie Stucky  
Mr. & Mrs. Robert S. Sweeney  
Tektronix Foundation  
Mr. & Mrs. Peter Turney  
Mr. & Mrs. Frank M. Warren Sr.  
James & Sydnie Waskey  
Jack & Ginny Wilborn  
Mr. & Mrs. Charles & Williams  
Steve & Patty Williams  
James & Carla Wilson  
Allen & Rebecca Wirfs-Brock  
Mr. & Mrs. Norman A. Workman  
Ian & Kazzie Young  
Steven & Annette Zack

### Hallmark Club

*Gifts of \$250 to \$499*  
Christopher & Sheryl Acheson  
Bob & Kathleen Ames  
Dr. & Mrs. James W. Asaph  
Craig & Jamie Austin  
Sharlene & Gene Austin  
Mr. & Ms. David Bailey  
The Bank of New York  
Mr. John M. Berman  
Dr. & Mrs. John Berwind  
Mr. & Mrs. Steven J. Bitte  
Bob & Nell Bonaparte  
Mrs. Audra M. Braun  
Mrs. Leslie S. Campbell  
Drs. Nancy Salisbury &  
Jeff Campbell  
Jon & Ellen Carder  
Mike & Cheryl Carrier  
Ding & Patsy Chan  
Dr. Clark Chipman  
Mrs. George W. Conklin  
Paul & Christine Cooper

## THE OES FUND

William & Elaine Corwin  
Janet Trullinger & Thomas Crawford  
Mr. & Mrs. William B. Crow  
Mr. & Mrs. Bryan M. Cullivan  
Janet Maurer & Bill Davenport  
Mrs. Jane Greenberg Downs  
Mr. Cornelius Duffie Jr.  
Ms. Barbara Durrett  
Vivian & Timm Edell  
Ron & Lynne Enyeart  
Drs. David & Kendra Farris



▲ A Valentine's Day note from the 1993-94 OES Fund Committee.

Dr. Robert & Kristina Fields  
Ms. Carol F. Floten  
Flowerree Foundation  
Mr. & Mrs. James B. Gaffney  
Clarence & Myrtle Rae Greenwood  
John & Susan Gundle  
Charles & Gwen Hahn  
Mrs. Carlos Hamilton  
David & Wendy Hamilton  
Mrs. U.S. Harkson  
Sandy & Jeri Haskins  
Mrs. Betty Lou Hatcher  
Mrs. Edmund Hayes  
Tom & Judi Henkle  
Ms. Barrie Herbold  
Jim & Barbara Herbold  
Mr. Fred Ing  
Mrs. Kathryn R. Janssen  
Jewett, Barton, Leavy & Kern  
David & Eileen Johnson  
Charles & Patricia Kellogg  
Klaus & Sharleen Kleber  
Eckhardt & Veona Koenige  
August & Mallie Kollom  
Mr. & Mrs. Suen-Kow Koo  
Mrs. Molly Clair Krause  
Lynn & Larry Krups  
Mr. & Mrs. Hoichi Kurisu  
Mr. & Mrs. Tsutomu Kyuzaki  
Mr. R.G. LaFollette  
Robert & Mary Laird  
Ms. Helena G. Barbey Lankton  
Drs. Fernando & Dolores Leon  
Mrs. J. Harold Lineberger  
Francis & Lucy Liu  
Robert W. & Kathleen M. Love  
Michael & Catherine Malos  
Mrs. Barbara F. Marontate  
Sylvia & John Mathews  
Ms. Karen L. Mefferd  
Dr. & Mrs. Martin Mehr

Mrs. W. Dickerson Milliken  
Ms. Tatiana Moller  
Michael & Dana Morasch  
Greg & Diane Morgan  
Frank & Kathryn Nance  
Mr. Jim O'Donnell  
Drs. NG & D Orfanakis  
Gary & Dana Ostenson  
Catherine Riffe & Thomas Page  
Phil & Lynne Papworth  
Ms. Faye E. Pepin  
Mrs. Patricia Pearson Peterson  
Dr. June Dunbar Phillips  
Mr. Gary R. Pope  
Sam & Anne Pope  
PPG Industries Foundation  
Richard & Louise Rawlinson  
Charles & Christina Reynolds  
Dan & Armande Ritter  
Mrs. Nancy S. Rosenfeld  
Hiroshi & Masami Saitoh  
Howard W. & Eileen E. Schlepp  
Mr. Jeffrey Smith  
Frances & Currin Snipes  
Mrs. Katherine Sotka  
Linda Coffey Stone & Peter Stone  
Beth & Mike Swink  
John B. & Karen A. Taylor  
Mr. & Mrs. P.Y. Teng  
Mrs. Richard C. Tevis  
Kathleen & Terry Van Ballegooijen  
Mr. & Mrs. Samuel Van Vactor  
Haleh & Sohrab Vossoughi  
Dr. & Mrs. Edward E. Ward  
Mrs. Alice Freeze Warner  
Beth & Bob Warner  
Morris & Paula Westlund  
Dennis & Patricia Winningstad  
Bob & Marilyn Wood  
Mark & Leslie Workman  
Mr. & Mrs. Tetsu Yamaguchi

### Founders' Club

*Gifts of \$125 to \$249*

Simon & Lisa Acheson  
Drs. Riyaz & Zeenat Ahmed  
Karen B. Alford  
Aon Corporation  
Herbert & Iris Arnett  
Mrs. Norma Fisher Atkins  
Bob & Sally Auguston  
Robert & Catherine Barlow  
Sharon & Keith Barnes  
Miss Shirley Barton  
William & Elizabeth Belgard  
Mrs. Jean Duffie Benedict  
Ken & Judith Bennington  
Dr. Gerard Berardi  
Mrs. Barbara B. Berglind  
Mr. William E. Bethards  
Dr. Anita Cadonau Birkland  
Sally J. Bjerklie  
Mr. Martin Bleeck  
David & Betsey Blessing  
James & Linda Blinkhorn  
Russ & Mary Anne Boardman  
The Boeing Company  
Janice Brown

Drs. Moir & Sudge Budden  
Tom & Jackie Calkins  
Robert & Janice Cassidy  
Ms. Charyl Cathey  
Mrs. Helen McKeever Chastain  
Geoff & Rhonda Chew  
MR2 Clair Clark  
Elizabeth & Charles Colip  
Dennis & Gayle Collins  
Mrs. Alexandra Dussin Cook  
Mrs. David M. Craig  
Don & Lillian Crawford  
Mrs. Janet Mann Crawford  
Gary & Laurie Crossman  
Cristin Babcock & Eric Cullander  
Jim & Sallie Cutler  
Theo & Jo de Bruin  
Mrs. Robin Oulton Decius  
Harry & Merry Demarest  
Ms. Lori Diaz  
Linda & Nate Dickinson  
Jerry & Patti Doble  
Mrs. Patricia M. Dowling  
Wayne & Julie Drinkward  
Jay & Laurie Dugoni  
Mrs. Betty Lou Dunlop  
Mr. Steve Eckhardt  
Mrs. Jane Edwards  
Dr. Melanie Ellison  
Mrs. Susan Woodruff Emery  
Donald & Jana Evans  
Mrs. Nancy Morris Feldman  
Mrs. Helen Stratton Felker  
Greg & Mary Ferguson  
Ms. Amy Fields  
Mr. & Mrs. William S. Findlay  
Jerry & Sally Fish  
Brad & Kami Fraley  
Mrs. Norman W. Frink Sr.  
Mrs. Yasuko T. Fukano  
Mrs. Florence Fuller  
Victoria DeVito & Craig Fuller  
Drs. Michael & Barbara Gaines  
Michael & Clara Gamache  
Paul & Sarah Gary  
Dr. & Mrs. Milt Gavlick  
Sharon Eileen Gebbie  
Donna & John Ghiorso  
Alex & Karen Grauert  
Mrs. Diana Barnard Gray  
Mrs. Joan Irwin Green  
Bob & Suzanne Greenberg



▲ Parents Darlene Kaempf and Margie Adams at the OES Major Benefactors Reception.

Mr. & Mrs. Robert E. Grissom  
Mrs. Patricia B. Hamilton  
Dr. Merrill P. Hansen  
Howard & Molly Harris  
Brian & Janice Harwood  
Mrs. Betty Hedberg  
Delbert & Rosa Hemphill  
Alan & Rebecca Hencky  
David & Sandra Herman  
Dr. & Mrs. D. Christopher Hikes  
Mrs. Charmian Kolar Hilleary  
Curt & Theresa Hinline  
Mrs. Barbara Jean Hinman  
Keith & Catherine Hoelscher  
Mrs. Jean Irwin Hoffman  
Mrs. M.B. Hoffman  
Rebecca & Tom Holder  
Mrs. Margaret M. Holmgren  
Mr. & Mrs. Robert A. Holmstrom  
Ms. Betty Hooton  
The Rev. Lucy L. Houser  
Mrs. Dorothy Sloan Huey  
Keith & Myrna Icombe  
Dr. & Mrs. Toru Ike  
Marion & Gordon Janney  
Mrs. Janet L. Jewett  
Bill & Marcia Johnson  
Chris & Ann Johnson  
Mrs. Marcy Drain Jordan  
Ms. Shannon Mong Joseph  
Mr. John Karamanos Jr.  
Ms. Susie Kasper  
Kemper Securities, Inc.  
Mr. Doug Kezeor  
Mrs. Marion L. Kingery  
William G. Kirkman  
Mrs. Susan Krohn Koe  
Mr. & Mrs. John Kowolik  
Terry & Wendy Lane  
Duane H. Laun  
Felix & Carol Licini  
Ms. Elizabeth Lilley  
Warren Hirsch & Kate Logan  
Brian & Lisa Marsh  
Henrik & Britt Martens  
Mrs. Martha Randall Mason  
Mrs. Patricia J. Maulbetsch  
D. Charles & Sara G. Mauritz  
Curtis & Paula McCracken  
Mrs. Linita McDonald  
Cindy Knowles & Hollis McMilan  
Mrs. Diane Meade  
Mr. George E. Moller



▲ St. Helens Hall alumna Betty Lou Roberts '36 and trustees Harriett Dixon and Jack Spring, at the Founders' Day luncheon in November, 1993.

# THE OES FUND

Mrs. Susan D. Moore  
 Mrs. Frances A. Morgan  
 Nicholas & Susan Moros  
 The Rev. Robert P. Morrison  
 Mrs. Mary H. Naab  
 Mr. & Mrs. Harry Namba  
 Ms. Julie Neupert  
 Ms. Margaret L. Newhall  
 Mr. Kenneth B. Noack Jr.  
 Dr. & Mrs. Christopher Nogeire  
 Mrs. Sara-Jane Henderson Norwood  
 Stephen & Linda Olson  
 Joe & Suzie Opsahl  
 Mr. & Mrs. Monford Orloff  
 Mrs. Betty Barr Patrick  
 Carol Ward & John Pedisich  
 Mark & Rosanne Perry  
 Mr. & Mrs. Daniel T. Phillips  
 Mr. & Mrs. Christopher Platt  
 Johannes H. & Atsumi Polstra  
 Mr. David Powell  
 Frank & Carol Powers  
 Ms. Meridel J. Prideaux  
 Prudential Securities  
 Dr. Geraldine Pulito  
 Colleen Acres & William A. Rabiega  
 Mr. Lawrence Radcliffe  
 Maty & Nasrin Rahatzad  
 Ms. Karin Randall  
 Mr. James R. Rear Jr.  
 Dr. & Mrs. David Regan  
 Howard & Sally Reichmuth  
 Mr. & Mrs. Joe Robertson  
 Harvey & Miriam Rogers  
 Mr. & Mrs. Edward Rubovits  
 Loree & Ken Sakai  
 Mr. & Mrs. William Sakai  
 Eric & Pam Sankey  
 Richard W. & Mary W. Sapp  
 Mia & Lou Savage  
 Michael & Pamela Schaeffer  
 Frank W. & Betty R. Scheible  
 Mr. Jordan D. Schnitzer  
 Ms. P.J. Sears-Million  
 Waldemar & Patricia Seton  
 Joel & Sandra Shilling  
 Mr. & Mrs. Jay A. South  
 Peter & Frances Spencer  
 Jeff & Kathy Spere  
 R.E. & Helen Spiker  
 Mr. & Mrs. Jonathan N. Spitz  
 Mrs. Jemi Cain Spriggs  
 Judy & Steve Standing  
 Ms. Anne Stevenson  
 Helen Mills Stoll  
 Mrs. Sally Reed Stout  
 Mr. Gregory Sweigert  
 Mrs. Stephen Eberly Thompson  
 Lee & Lani Thornton  
 Dr. & Mrs. Matti Totonchy  
 Lucille Van Houten  
 Ms. Lee Diane Collins Vest  
 Gary & Shirley Voelker  
 Jon & Barbara von Behren  
 Dale & Patricia Walhood  
 Ms. Laura Wallace

Washington Mutual  
 Mr. Percival J. Webster  
 Ms. M. Jenelyn Wessler  
 West One Bank  
 Mrs. Libby Bishop Westlund  
 Nancy Greene & David Wilson  
 Dr. David K. Winchester  
 Bob & Jane Winger  
 Richard & JoEllen Winningstad  
 Arlene & Woody Wittmayer  
 Mrs. Betty Jo Wright  
 Ms. Nancy Woodworth Young  
 George & Eleanor Zendt  
 Louisa & Harvey Zendt  
 Mr. & Mrs. William Zobrist Jr.



▲ Cecil Drinkward presented trustee Peter Bechen with the Cecil Drinkward Award for Trustee Excellence for 1993-94.

## OES BOARD OF TRUSTEE OES FUND GIVING

Mr. Charles A. Adams  
 Mr. Peter F. Bechen  
 Mr. Marty Brantley  
 The Very Rev. Roy Coulter  
 Mrs. Harriett Dixon  
 Mr. Wayne Drinkward  
 Mr. Robert Durst  
 Mr. Sean Patrick Gilronan  
 Mrs. Betty Hedberg  
 The Rev. Lucy L. Houser  
 Mr. Chris Kitchel  
 Mr. Sean Kuni  
 The Rt. Rev. Robert L. Ladehoff  
 Elisabeth Lyon  
 The Rev. Robert P. Morrison  
 David & Karen Pratt  
 Mr. Paul R. Schlesinger  
 Mrs. Katherine Sotka  
 John B. Spring  
 Mr. Peter W. Stevens  
 Mr. Dale Stewart  
 Anne Thanhouser  
 Mrs. James Waskey

## OES PARENT ANNUAL GIVING

Under the leadership of Pat Karamanos, the OES Fund grade chairs raised a record \$189,388 from parents for The OES Fund. Thank you to all of our parent volunteers for their hard work and dedication to the School!

### Grade Chairs

Christine Cooper  
*Pre-Kindergarten*  
 Patty and Steve Williams  
*Kindergarten*  
 Priscilla and John Longfield  
*Primary*  
 Sharon and Henry Hewitt  
*First Grade*  
 Janet Maurer  
*Second Grade*  
 Laurie Turney  
*Third Grade*  
 Susan Quattrocchi  
*Fourth Grade*  
 Jana and Richard Westlund  
*Fifth Grade*  
 Kathleen Dodds and Matthew Miller  
*Sixth Grade*  
 Richard Bambam  
*Seventh Grade*  
 Wendy Hamilton  
*Eighth Grade*  
 Annie English  
*Ninth Grade*  
 Linda Smith  
*Tenth Grade*  
 Jackie Lipshutz  
*Eleventh Grade*  
 Margie and Tony Adams  
*Twelfth Grade*

### LOWER SCHOOL

**Pre-Kindergarten 100.0%**  
 Sharlene & Gene Austin  
 Paul & Christine Cooper  
 Dr. Robert & Kristina Fields  
 Brad & Kami Fraley  
 Sandy & Jeri Haskins  
 David & Sandra Herman  
 James & Carol Hibbs  
 Sean & Paige Parker Kuni  
 Ed & Margaret Kushner  
 Mai-Lill & Rein Magi

Brian & Lisa Marsh  
 Ms. Beth Mason  
 Greg & Katherine McCoy  
 Leslie Mackenzie & Michael Morey  
 Dr. & Mrs. Charles Morrow  
 Terry & Jamie Putnam  
 Lee C. Olsen & David H. Ross  
 Mr. & Mrs. Jonathan N. Spitz  
 Linda Coffey Stone & Peter Stone  
 Mr. & Mrs. Robert S. Sweeney  
 Mr. Gregory Sweigert  
 Sohrab & Haleh Vossoughi  
 Mr. & Mrs. Charles & Williams

### Kindergarten 85.2%

Jon & Barbara von Behren  
 William & Elizabeth Belgard  
 James & Linda Blinkhorn  
 Kay & Marty Brantley  
 Mr. James L. Buchal  
 Drs. Nancy Salisbury & Jeff Campbell  
 Robert & Janice Cassidy  
 Dr. & Mrs. Richard & Nancy Chapman  
 Janet Trullinger & Thomas Crawford  
 Brian Foulkes & Fernanda D'Agostino  
 Janet Maurer & Bill Davenport  
 Jay & Laurie Dugoni  
 Drs. David & Kendra Farris  
 Dr. & Mrs. Milt Gavlick  
 Dan & Linda Gipe  
 Ms. Pauline Gregory  
 Charles & Gwen Hahn  
 Mary Michael & Kobel Haver  
 Curt & Theresa Hinline  
 Gary & Ericka Hoffman  
 Dr. & Mrs. Kenneth Janoff  
 Ms. Annmarie Carlson-Loder  
 Kenneth & Deborah Marsh  
 Russ & Pat Mickiewicz  
 Steve & Anita Mitchell  
 Ms. Tatiana Moller  
 Paul & Mary Oldshue  
 Mr. & Mrs. Christopher Platt  
 Friderike Heuer & Daniel Reisberg  
 Jeff & Kathryn Rippey  
 Loree & Ken Sakai  
 Wendy E. Sample  
 Mr. & Mrs. James Sassalos  
 John & Frances von Schlegell  
 Frances & Currin Snipes  
 Ernie & Erika Staley  
 Todd & Carrie Stucky  
 Ms. Elizabeth A. Trainor  
 Martha & Mark Warrington  
 Mr. & Mrs. Troy Westerdahl  
 Morris & Paula Westlund  
 Steve & Patty Williams  
 Nancy Greene & David Wilson  
 Diedre Cain & Tom Wilson  
 Mark & Leslie Workman  
 Steven & Annette Zack

# THE OES FUND

<p><b>Primary</b> <span style="float: right;"><b>93.3%</b></span></p> <p>Sharon &amp; Keith Barnes Bob &amp; Nell Bonaparte Ulla &amp; John Drell Paul &amp; Sarah Gary Kris &amp; Karen Van Hatcher Drs. Judith Sobel &amp; Gregory Koski John &amp; Priscilla Longfield Michael &amp; Catherine Malos Dawn &amp; Dan Milliron Jeff &amp; Kathy Spere Mr. &amp; Mrs. Robert S. Sweeney Dr. &amp; Mrs. David TenHulzen Ned &amp; Anne Thanhouser James &amp; Carla Wilson</p> <p><b>First Grade</b> <span style="float: right;"><b>90.2%</b></span></p> <p>James &amp; Jane Adams Bob &amp; Sally Auguston Peter &amp; Nora Ausekiis James &amp; Beverly Bow David &amp; Kathy Bussman Cristin Babcock &amp; Eric Cullander Dr. Robert &amp; Kristina Fields Diane &amp; Jim Flack Victoria DeVito &amp; Craig Fuller Steve &amp; Amy Haessler Brian &amp; Janice Harwood Fritz &amp; Maggie Hayes Henry &amp; Sharon Hewitt Rebecca &amp; Tom Holder Dr. &amp; Mrs. Kenneth Janoff Eckhardt &amp; Veona Koenige Ed &amp; Margaret Kushner Terry &amp; Wendy Lane Christi &amp; Granville Lee Elizabeth von Behren &amp; Allan Lehman Mai-Lill &amp; Rein Magi Brian &amp; Lisa Marsh Ms. Atsuko Matsuyama Cindy Knowles &amp; Hollis McMilan Daisy Housel-Miller &amp; Ted Miller Leslie Mackenzie &amp; Michael Morey Greg &amp; Diane Morgan Barbara Ports &amp; Michael Moser David &amp; Penny Olien Joe &amp; Suzie Opsahl Michael Christenson &amp; Patricia Osborne Phil &amp; Lynne Papworth Drs. Joe &amp; Maggie Robertson Marc &amp; Barbara Robins Tom &amp; Susan Robinson Drs. John &amp; Trudy Samples Mary &amp; Jack Schunk Judy &amp; Steve Standing Ray &amp; Mary Streinz Todd &amp; Carrie Stucky Ned &amp; Anne Thanhouser Mr. &amp; Mrs. Peter Turney Bernd &amp; Petra Wahler Robert &amp; Stephanie Wight Dennis &amp; Patricia Winningstad Louisa &amp; Harvey Zendt</p>	<p><b>Second Grade</b> <span style="float: right;"><b>71.2%</b></span></p> <p>Anonymous Bob &amp; Kathleen Ames Robert &amp; Catherine Barlow Kay &amp; Marty Brantley Joe &amp; Sharon Cade Robert &amp; Janice Cassidy Dr. &amp; Mrs. Richard &amp; Nancy Chapman Paul &amp; Christine Cooper Janet Maurer &amp; Bill Davenport Ms. Barbara Durrett Jerry &amp; Sally Fish Mr. &amp; Mrs. Richard Garvin Ms. Mindy Gavette Bob &amp; Suzanne Greenberg Ms. Pauline Gregory Bob &amp; Kelly Hale David &amp; Wendy Hamilton James &amp; Carol Hibbs Lawrence &amp; Barbara Kaplan Pat &amp; John Karamanos Eckhardt &amp; Veona Koenige Jeanette &amp; David Larson Wesley &amp; Julie Lewis Russ &amp; Pat Mickiewicz Kathleen Dodds &amp; Matthew Miller Dawn &amp; Dan Milliron Chris &amp; Linda Morgan Frank &amp; Kathryn Nance Ms. Julie Neupert Catherine Riffe &amp; Thomas Page Ms. Faye E. Pepin Mark &amp; Rosanne Perry Lee C. Olsen &amp; David H. Ross Loree &amp; Ken Sakai Michael &amp; Pamela Schaeffer James &amp; Carla Wilson Masatoshi &amp; Susan Yamanaka</p> <p><b>Third Grade</b> <span style="float: right;"><b>89.3%</b></span></p> <p>Simon &amp; Lisa Acheson Jon &amp; Barbara von Behren Karen Fast &amp; Robert Bennett Dr. Gerard Berardi Mr. &amp; Mrs. Jean D. Brault Janice Brown Ms. Sandra Cade Mike &amp; Cheryl Carrier Mr. &amp; Mrs. William B. Crow Mr. Robert Dahmen Thomas &amp; Pamela Daniels Ms. Lori Diaz Julianne &amp; Michael Early Ron &amp; Lynne Eneyart Susan T. &amp; Paul Farago Grant &amp; Mary Ellen Farr Mr. &amp; Mrs. Richard Garvin Mr. &amp; Mrs. Raymond Ghattas Donna &amp; John Ghorso Alex &amp; Karen Grauert Sandy &amp; Jeri Haskins Kris &amp; Karen Van Hatcher Pat &amp; John Karamanos Charles &amp; Patricia Kellogg Warren Hirsch &amp; Kate Loggan John &amp; Priscilla Longfield Elisabeth &amp; Peter Lyon</p>	<p><b>Fourth Grade</b> <span style="float: right;"><b>91.7%</b></span></p> <p>Anonymous James &amp; Jane Adams Ken &amp; Linda Barker Allen &amp; Rebecca Wirfs-Brock Ding &amp; Patsy Chan Elizabeth &amp; Charles Colip Janet Trullinger &amp; Thomas Crawford Gary &amp; Laurie Crossman Mr. &amp; Mrs. Bryan M. Cullivan Ms. Lori Diaz Linda &amp; Nate Dickinson Jerry &amp; Sally Fish Ms. Carol F. Floten Ms. Nikki Hatton Fritz &amp; Maggie Hayes Alan &amp; Rebecca Hencky Lucille Van Houten Mr. &amp; Mrs. Hoi Huynh Keith &amp; Myrna Icombe Alex &amp; Elaine Johnson Jr Michael &amp; Darlene Kaempt Jan &amp; Chris Kitchel Wally &amp; Cathy Krieger Dixie &amp; Tom Kroupa Greg &amp; Diane Landers Elizabeth von Behren &amp; Allan Lehman Robert W. &amp; Kathleen M. Love David &amp; Jacquie Lukens Elisabeth &amp; Peter Lyon H. Storm Floten MD Drs. Laurie Hesla &amp; James Miller Scott &amp; Sue Nicol Paul &amp; Mary Oldshue Mr. &amp; Mrs. Daniel T. Phillips Richard &amp; Victoria Ponting Frank &amp; Carol Powers Ms. Susan Quattrocchi Maty &amp; Nasrin Rahatzad Pam Waldman &amp; Dan Rosenhouse Drs. John &amp; Trudy Samples Mr. &amp; Mrs. Edmund A. Stevens Diedre Cain &amp; Tom Wilson Mark &amp; Leslie Workman Ian &amp; Kazzie Young</p>	<p><b>Fifth Grade</b> <span style="float: right;"><b>81.1%</b></span></p> <p>Simon &amp; Lisa Acheson Bob &amp; Kathleen Ames Mr. &amp; Mrs. Jean D. Brault Dennis &amp; Gayle Collins Cristin Babcock &amp; Eric Cullander Wayne &amp; Julie Drinkward Donald &amp; Jana Evans Victoria DeVito &amp; Craig Fuller Alex &amp; Karen Grauert Clarence &amp; Myrtle Rae Greenwood John &amp; Susan Gundie Ms. Cynthia Hayakawa Delbert &amp; Rosa Hemphill Tom &amp; Judi Henkie Henry &amp; Sharon Hewitt Ms. Virginia Player Iles David &amp; Eileen Johnson Lawrence &amp; Barbara Kaplan Drs. Robert &amp; Mary Catherine King Jan &amp; Chris Kitchel Klaus &amp; Sharleen Kleber Jeanette &amp; David Larson Wesley &amp; Julie Lewis Chester &amp; Linda Marshall Robert &amp; Abigail Marshall Ms. Sarah McNary Russ &amp; Pat Mickiewicz Daisy Housel-Miller &amp; Ted Miller Ms. Tatiana Moller Dr. &amp; Mrs. Christopher Nogeire Hal &amp; Helene Phillips Dr. &amp; Mrs. David Regan Tom &amp; Susan Robinson Harvey &amp; Miriam Rogers Mr. &amp; Mrs. Richard L. Sadler Mr. &amp; Mrs. James Sassalos Mary &amp; Jack Schunk Mr. &amp; Mrs. Jay A. South Ned &amp; Anne Thanhouser Martha &amp; Mark Warrington Dr. Richard &amp; Jana Westlund Paul H. &amp; Diane F. Whitney Dr. David K. Winchester</p> <p><b>MIDDLE SCHOOL</b></p> <p><b>Sixth Grade</b> <span style="float: right;"><b>96.2%</b></span></p> <p>Christopher &amp; Sheryl Acheson Aftab &amp; Rehana Ahmad Drs. Riyaz &amp; Zeenat Ahmed Richard C. &amp; Carilyn M. Alexander Robert &amp; Catherine Barlow Dr. Gerard Berardi Russ &amp; Mary Anne Boardman Lew &amp; Julia Brinegar Allen &amp; Rebecca Wirfs-Brock Ms. Jeannette Brown David &amp; Kathy Bussman Joe &amp; Sharon Cade Tom &amp; Jackie Calkins Lan Lu &amp; Tom Chou Mr. &amp; Mrs. James L. Dunn Drs. Woodruff &amp; Annie English Mr. &amp; Mrs. Raymond Ghattas Mr. &amp; Mrs. Sean Patrick M. Gilronan John &amp; Bonnie Gregory David &amp; Wendy Hamilton Ms. Peigi Huseby</p>
---	---	---	---

# THE OES FUND

Michael & Darlene Kaempf  
 Clyde Speidel & Paul Keown  
 Gil & Jackie Lipshutz  
 Mrs. Diane Meade  
 Scott & Lynn Miller  
 Kathleen Dodds & Matthew Miller  
 Michael & Dana Morasch  
 Gary & Dana Ostenson  
 Carol Ward & John Pedisich  
 James & LouAnn Pickering  
 Johannes H. & Atsumi Polstra  
 Terry & Mei-Lin Poon  
 Charles & Christina Reynolds  
 Joel & Sandra Shilling  
 Stephen & Virginia Slater  
 Mr. & Mrs. Jay A. South  
 Drs. Bill & Barbara Spears  
 R.E. & Helen Spiker  
 John B. & Karen A. Taylor  
 Dr. & Mrs. Matti Totonchy  
 Martin & Irene Vlach  
 Dr. & Mrs. Edward E. Ward  
 James & Sydnie Waskey  
 Dr. Richard & Jana Westlund  
 Bob & Jane Winger  
 Dennis & Patricia Winningstad  
 Richard & JoEllen Winningstad  
 Mark & Leslie Workman  
 Ms. Leslie Zega

**Seventh Grade 73.2%**

Bob & Sally Auguston  
 Ken & Linda Barker  
 Lew & Julia Brinegar  
 Elizabeth & Charles Colip  
 Jim & Sallie Cutler  
 Mary & Peter Davidson  
 Ann & Mike Donnelly  
 Mr. & Mrs. Jay D. Enloe  
 John & Katie Garvie  
 Tom & Judi Henkle  
 Ms. Barrie Herbold  
 Jim & Jan Hibbard  
 Dr. & Mrs. D. Christopher Hikes  
 Mr. & Mrs. Hoi Huynh  
 Ms. Virginia Player Iles  
 Mr. William Impy  
 Mr. Fred Ing  
 Alex & Elaine Johnson Jr  
 Morton & Susan Kelsey  
 Paul & Patti Knollman  
 Lynn & Larry Krups  
 Robert & Mary Laird  
 Mr. Herbert Landon  
 Pat Timberlake & Matthew Lyon  
 Tom & Karen McClung  
 Paul & Jean Patsis  
 Richard & Victoria Ponting  
 Mr. David Powell  
 Colleen Acres & William A. Rabiega  
 Ms. Karin Randall  
 Dr. & Mrs. David Regan  
 Richard W. & Mary W. Sapp  
 Miles & Patsy Seeley  
 Jack & Pat Semura  
 Adrienne Souther  
 David B. & Terry Taylor  
 Mr. & Mrs. Samuel Van Vactor

Jack & Ginny Wilborn  
 Carl & Pam Wilcox  
 Ms. Nancy Wolfe  
 Les Smith & Nadine Wooley

**Eighth Grade 75.4%**

Karen B. Alfond  
 Bob & Sally Auguston  
 Craig & Jamie Austin  
 Mr. Bradley Baugher  
 Peter & Missy Bechen  
 Joe & Sharon Cade  
 Dr. Clark Chipman  
 William & Elaine Corwin  
 Dr. Wendy M. Darden  
 Linda & Nate Dickinson  
 Jerry & Patti Doble  
 Bobby & Carl DuBose  
 Peter & Tammy Ebert  
 Ms. Carol F. Floten  
 Mr. & Mrs. James B. Gaffney  
 John & Susan Gundle  
 David & Wendy Hamilton  
 Brian & Janice Harwood  
 Mrs. Florence Hedlund  
 D.A. & Meredith Hilderbrand  
 Ms. Peigi Huseby  
 Ms. Gail Auguston-Koppen  
 Dr. & Mrs. William Lamb  
 Kim & Reidun Lundgren  
 H. Storm Floten MD  
 Drs. Juan & Monica Millan  
 Michael & Dana Morasch  
 Dr. & Mrs. Christopher Nogeire  
 Chet & Wendy Orloff  
 Dr. Geraldine Pulito  
 Mr. Lawrence Radcliffe  
 Lawrence & Susan Rein  
 Harvey & Miriam Rogers  
 Mr. & Mrs. Richard L. Sadler  
 Mary & Jack Schunk  
 Mr. & Mrs. David Shoulders  
 Paul & Linda Smith

Dick & Candy Snyder  
 Peter & Frances Spencer  
 Connie Stevenson  
 James & Sydnie Waskey  
 Douglas & Gwen Whitmore  
 Mary Burgess & Thomas Willing

**UPPER SCHOOL**

**Class of '97 61.0%**  
**Freshman Parents**

Joan Becker  
 Mr. & Mrs. Steven J. Bitte  
 Theo & Jo de Bruin  
 Dr. Wendy M. Darden  
 Ms. Sarah Elizabeth Cowie  
 Gary & Laurie Crossman  
 Wayne & Julie Drinkward  
 Vivian & Timm Edell  
 Drs. Woodruff & Annie English  
 Mr. & Mrs. William S. Findlay  
 Ms. Kathryn F. Gray  
 John & Bonnie Gregory  
 Gregg & Cindy Hoffman  
 Mary & Al Rollins Jr  
 Paul & Lynnsly Kollar  
 Mr. & Mrs. Suen-Kow Koo  
 Mr. & Mrs. John Kowolik  
 Mr. David Menely  
 Nicholas & Susan Moros  
 Loren & Dina Morse  
 Mike & Janet Phillips  
 Hal & Helene Phillips  
 James & LouAnn Pickering  
 Richard & Victoria Ponting  
 Howard & Sally Reichmuth  
 Mia & Lou Savage  
 David & Judy Schiff  
 Bev & John Shue  
 Ms. Mei Shum  
 Ms. Jean D. Smith  
 Mr. & Mrs. Chai Sophonpanich  
 Dale & Carol Stewart

Dr. & Mrs. Matti Totonchy  
 Beth & Bob Warner  
 Nely Johnson & David Wilson  
 Arlene & Woody Wittmayer

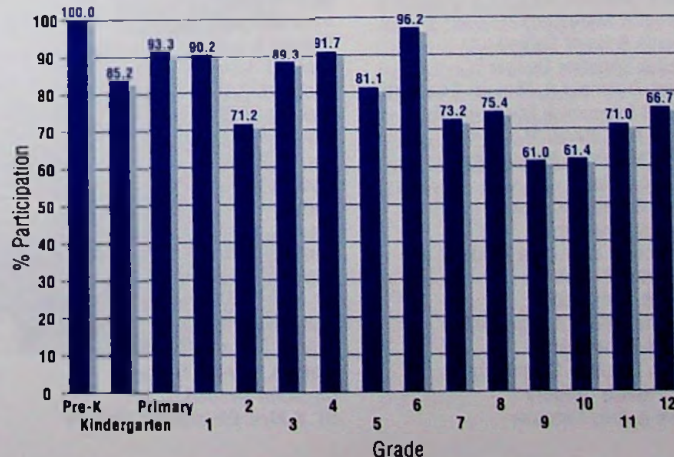
**Class of '96 61.4%**  
**Sophomore Parents**

Mr. Bradley Baugher  
 Mr. John M. Berman  
 James & Diane Bickford  
 Ms. Hannah Davis  
 Larry & Mary Feltz  
 Rick & Laurie Gobel  
 Ms. Patricia Green  
 Mr. & Mrs. Jerry Herman  
 Keith & Catherine Hoelscher  
 Mr. & Mrs. Hoi Huynh  
 Dr. & Mrs. William Lamb  
 Ms. Colleen Lashbaugh  
 Francis & Lucy Liu  
 Loren & Dina Morse  
 Stephen & Linda Olson  
 Ms. Sondra J. Price  
 Ms. Mary Kline Rose  
 Susan & Scott Russell  
 Mr. Rick Seifert  
 Stephen & Virginia Slater  
 Paul & Linda Smith  
 Dale & Carol Stewart  
 Beth & Mike Swink  
 Stephen & Meri Taylor  
 Mr. & Mrs. Raymond Webber  
 Bob & Marilyn Wood  
 Mr. & Mrs. Tetsu Yamaguchi

**Class of '95 Junior Parents 71.0%**

Ms. Lucinda Agre  
 Kathleen & Terry Van Ballegooijen  
 David & Betsey Blessing  
 Theo & Jo de Bruin  
 Jon & Ellen Carder  
 Ms. Sharon N. Chapman  
 Mr. Michael Chapman  
 John & Deborah Chessar  
 Michael & Pamela Coffeen  
 Mr. Gerald deJaager  
 Wayne & Julie Drinkward  
 Drs. Woodruff & Annie English  
 Greg & Mary Ferguson  
 Joe Graziano  
 Kris & Steve Gregg  
 Brian & Janice Harwood  
 Rod & Terri Hatch  
 Gregg & Cindy Hoffman  
 Alan & Suzanne James  
 Michael & Darlene Kaempf  
 Mr. & Mrs. Suen-Kow Koo  
 John & Rebecca LeCavalier  
 Mr. & Mrs. Moon Woo Lee  
 Gil & Jackie Lipshutz  
 Henrik & Britt Martens  
 Mr. & Mrs. Masahisa Masuda  
 Dr. & Mrs. Martin Mehr  
 Keith & Diane Meisenheimer  
 Scott & Lynn Miller  
 Dr. & Mrs. Christopher Nogeire  
 Drs. NG & D Orfanakis  
 Mr. & Mrs. Jae Kyu Park

**The OES Fund Parent Participation 1993-94**



# GIFTS

Judy Person  
 Greg & Aya Peterson  
 Charles & Noreen Reali  
 Bob & Pat Rossi  
 Susan & Scott Russell  
 Eric & Pam Sankey  
 William & Leslie Anne Scheible  
 Miles & Patsy Seeley  
 Dick & Candy Snyder  
 Mr. & Mrs. Chai Sophonpanich  
 Fred & Shelley Stoffer  
 Mr. & Mrs. P.Y. Teng  
 Lee & Lani Thornton  
 Mr. & Mrs. Samuel Van Vactor  
 Gary & Shirley Voelker  
 Richard & Cynthia Waitt  
 Mr. & Mrs. Jung Ju Yang

## Class of '94 Senior Parents 66.7%

Mr. & Mrs. Charles A. Adams  
 Ken & Judith Bennington  
 Mrs. Linda A. Carroll  
 Mr. & Mrs. Chris Chang  
 Don & Lilian Crawford  
 Mr. & Mrs. Alan Duncan  
 James & Marilyn Frank  
 Ted & Diane Freres  
 Dr. Kristine Gebbie  
 Dr. Neil Gebbie  
 Mr. & Mrs. Jerry Herman  
 Ms. Cheryl Hiller  
 Dr. & Mrs. Toru Ike  
 Mary & Al Rollins Jr  
 Barry & Louise Kremkau  
 Robert & Mary Laird  
 Ronald & Lourdes Landry  
 Felix & Carol Licini  
 Mr. & Mrs. Peter Lin  
 D. Charles & Sara G. Mauritz  
 Mr. David Menely  
 Ms. Jeanette Morales  
 Hideto & Ritsuyo Moriyasu  
 Dave & Dolly Moser  
 Paul & Jean Patsis  
 Sam & Anne Pope  
 Dan & Armande Ritter  
 Lenita & Michael Scheetz  
 Gerald H. Siemens  
 Ms. Barbara Smith  
 Mr. Jeffrey Smith  
 John B. & Susan Spring  
 Bonnie & Roger Stanke  
 Stephen & Carole Thomas



▲ Dorm students Nick Charleston and Nancy Lee.

## RESTRICTED GIFTS

**Aardvark Fun Park**  
 Mr. A. Bruce Hallock

**Athletic Dept.**  
 Dale & Carol Stewart  
 Mr. James Dyer

## Beginning School Reading

*In memory of Ellen Manson*  
 Mr. & Mrs. Steven J. Bitte  
 Ms. Nancy Duggan  
 Mr. & Mrs. Norman Hammersly  
 Sue & Tom Horstmann  
 James & Mary Kruchoski  
 Bill & Cindi Marshall  
 Mr. & Mrs. Donald McClave  
 Karen & Craig McClure  
 Scott & Sue Nicol  
 The Paz Family  
 Mr. Gary R. Pope  
 Mr. & Mrs. Peter W. Stevens

## Birthday Books

These gifts honor the birthdays of OES Lower School students.

Anonymous  
 Simon & Lisa Acheson  
 James & Jane Adams  
 Bob & Kathleen Ames  
 Peter & Nora Auseklis  
 Craig & Jamie Austin  
 Robert & Catherine Barlow  
 Sharon & Keith Barnes  
 Mr. & Mrs. Ralph Bellande  
 Karen Fast & Robert Bennett  
 Bob & Nell Bonaparte  
 Mr. & Mrs. Jean D. Brault  
 Janice Brown  
 David & Jane Burselson  
 Joe & Sharon Cade  
 Corbet & Myra Clark  
 Dennis & Gayle Collins  
 Paul & Christine Cooper  
 Janet Trullinger & Thomas Crawford  
 Cristin Babcock & Eric Cullander  
 Mr. & Mrs. Bryan M. Cullivan  
 Janet Maurer & Bill Davenport  
 Ms. Lori Diaz  
 Linda & Nate Dickinson  
 Ms. Barbara Durrett  
 Dr. Robert & Kristina Fields  
 Ms. Carol F. Floten  
 Brad & Kami Fraley  
 Victoria DeVito & Craig Fuller  
 Paul & Sarah Gary  
 Bob & Suzanne Greenberg  
 Ms. Pauline Gregory  
 Steve & Amy Haessler



▲ OES parent Margie Adams accepts the Patron's Award on behalf of herself and her husband, Tony. The Adams have been among the School's strongest supporters for the past 14 years, while their children Charlie and Katie were enrolled as OES students.

David & Wendy Hamilton  
 Brian & Janice Harwood  
 Ms. Alice Haskins  
 Mary Michael & Kobel Haver  
 Fritz & Maggie Hayes  
 Delbert & Rosa Hemphill  
 David & Sandra Herman  
 Henry & Sharon Hewitt  
 James & Carol Dey Hibbs  
 Gary & Ericka Hoffman  
 Dr. Gerald & Catherine Hoffman  
 Dr. & Mrs. Kenneth Janoff  
 Lawrence & Barbara Kaplan  
 Pat & John Karamanos  
 Charles & Patricia Kellogg  
 Jan & Chris Kitchel  
 Klaus & Sharleen Kleber  
 Eckhardt & Veona Koenige  
 Curtis & Mariann Koop  
 Wally & Cathy Krieger  
 Sean & Paige Parker Kuni  
 Ed & Margaret Kushner  
 Wesley & Julie Lewis  
 David & Jacquie Lukens  
 Elisabeth & Peter Lyon  
 Mai-Lill & Rein Magi  
 Bill & Cindi Marshall  
 Ms. Beth Mason  
 Russ & Pat Mickiewicz  
 Kathleen Dodds & Matthew Miller  
 Steve & Anita Mitchell  
 Leslie Mackenzie & Michael Morey  
 Greg & Diane Morgan  
 Dr. & Mrs. Charles Morrow  
 Barbara Ports & Michael Moser  
 Julie Frantz & Craig Murphy  
 Frank & Kathryn Nance  
 Mr. John Neupert  
 Dr. & Mrs. Christopher Nogeire

Sandra S. Miles & Paul E. Norman  
 Paul & Mary Oldshue  
 Joe & Suzie Opsahl  
 Catherine Riffe & Thomas Page  
 Phil & Lynne Papworth  
 Ms. Faye E. Pepin  
 Mark & Rosanne Perry  
 Mr. & Mrs. Christopher Platt  
 Frank & Carol Powers  
 Patrick & Linda Radecki  
 Maty & Nasrin Rahatzad  
 Dr. & Mrs. David Regan  
 Friderike Heuer & Daniel Reisberg  
 Jeff & Kathryn Rippey  
 Marc & Barbara Robins  
 Tom & Susan Robinson  
 Lee C. Olsen & David H. Ross  
 Hiroshi & Masami Saitoh  
 Loree & Ken Sakai  
 Drs. John & Trudy Samples  
 Mary & Jack Schunk  
 Frances & Currin Snipes  
 Jeff & Kathy Spere  
 Mr. & Mrs. Jonathan N. Spitz  
 Ernie & Erika Staley  
 Judy & Steve Standring  
 Linda Coffey Stone & Peter Stone  
 Todd & Carrie Stucky  
 Mr. & Mrs. Robert S. Sweeney  
 Ned & Anne Thanhouser  
 Mr. & Mrs. George R. Turney  
 John & Frances von Schlegell  
 Morris & Paula Westlund  
 Dr. Richard & Jana Westlund  
 Steve & Patty Williams  
 James & Carla Wilson  
 Masatoshi & Susan Yamanaka  
 Ian & Kazzie Young  
 Steven & Annette Zack

# GIFTS

## **Counseling & Guidance Gifts**

Mr. & Mrs. Thomas M. Landye

## **Development Program Improvement**

These generous gifts finance the planning and initial activities of a comprehensive development program targeted at attracting, challenging and rewarding great teachers at OES.

Adams Foundation

## **Financial Aid Gifts**

The Sisters of St. John Baptist

## **Friends of the Hall**

Mrs. Dorothy M. Ueland

## **Gifts in Kind**

The following donors made generous contributions of tangible property or services to the School. In kind donations are a vital source of support for OES.

Mr. & Mrs. Charles A. Adams  
Richard C. & Carilyn M. Alexander  
Annie Bloom's Books  
Mrs. Jane Myers Armentrout  
Mr. & Mrs. Ed Burton  
Mr. Raleigh Butterfield

Marilyn De Vault  
Dr. Dejan Dordevich  
Esco Corporation  
Mark & Miyoko Foster  
Bob & Cherie Gregg  
Kris & Steve Gregg  
David & Wendy Hamilton  
Henry & Sharon Hewitt  
Mrs. Paula Hunger  
Ms. Jane Huseby  
Miss Ruth Jenkins  
Jan & Chris Kitchel  
Sean Kuni  
Tom & Karen McClung  
Curtis & Paula McCracken  
Frank & Kathryn Nance  
Ms. Julie Neupert  
Joe & Suzie Opsahl  
Drs. NG & D Orfanakis  
Terry & Mei-Lin Poon  
Mr. & Mrs. Richard F. Porter  
Drs. Bill & Barbara Spears  
Mr. & Mrs. Peter W. Stevens  
Dale & Carol Stewart  
Stephen & Meri Taylor  
Dr. & Mrs. David TenHulzen  
Mark & Helen Tochen  
Ms. Barbara B. Trudel  
Dale & Patricia Walhood  
Steve & Patty Williams  
Richard & JoEllen Winningstad  
Ms. Kelly Yustin

## **Lower School PE Department**

Ms. Carla Heckrodt

## **Lower School Library Remembrance Fund**

Dr. Albert F. Macho  
Ms. Judith Parsons  
Ms. Barbara B. Trudel  
Curtis & Paula McCracken

## **Math Department**

Mr. James Dyer

## **Middle School Discretionary**

Craig & Jamie Austin  
Mr. & Mrs. M. Malek Daaboul  
Jerry & Patti Doble  
Ms. Carol F. Floten  
John & Susan Gundle  
David & Wendy Hamilton  
D.A. & Meredith Hilderbrand  
Ms. Peigi Huseby  
Clyte Speidel & Paul Keown  
Paul & Patti Knollman  
Kim & Reidun Lundgren  
Robert & Pamela Matheson  
Gary & Dana Ostenson  
Harvey & Miriam Rogers  
Joel & Sandra Shilling  
Mr. & Mrs. Jay A. South  
John B. & Karen A. Taylor  
Dr. Richard & Jana Westlund  
Mark & Leslie Workman

## **Residence Department Gifts**

Mr. & Mrs. Lee T. Dulin

## **125th Anniversary Rose Garden Gifts**

Mrs. Patricia Kendall Apperson

## **SPARC**

Halton Foundation

## **Track & Field Program**

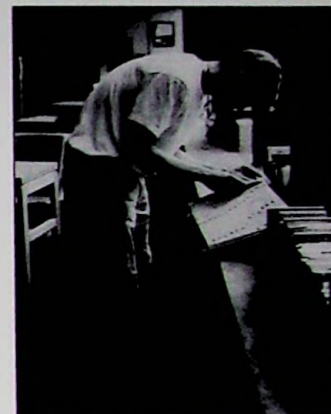
Mr. James Dyer  
Dale & Carol Stewart

## **Upper School Discretionary**

Northwestern Mutual Life

## **Upper School Library Gifts**

John & Deborah Chessar  
Corbet & Myra Clark  
Fanno Creek Friends Worship Group  
Michael & Alice Greene  
Steve & Amy Haessler  
Ms. Susan Jensen  
Patrick & Linda Radecki  
Mrs. Helen F. Weber



▲ Senior Toby Menely uses resources in the US library.

## **Upper School Newspaper**

Pam Vohnson & David Streight

## **Upper School Science**

Mr. James Dyer  
Patrick & Linda Radecki

## **Wetlands Biology**

Metro



▲ US students in chemistry class.

# GIVING BY AFFILIATION

## ALUMNI

### St. Helens Hall

<b>1915</b> Beatrice Thurston Paget	50.0%
<b>1919</b> Anna Wheeler Hayes	100.0%
<b>1920</b> Doris Henningsen Harkson Suzanne Caswell Honeyman Marian Jenkins Ruth Jenkins	80.0%
<b>1922</b> Eleanor Holman Burkitt Marion Farrell Kingery	66.7%
<b>1925</b> Dorothy Statter DeFrance Catherine Mayhew Taylor	25.0%
<b>1926</b> Helen Betsy Abbott Betty Allyn May Margaret Hall Newbegin Louise Hosch Phelps	36.4%
<b>1928</b> Marjory Holman Day Esther Kaser Ehrman	25.0%
<b>1929</b> Frances Taylor Lundberg	20.0%
<b>1930</b> Elizabeth O'Reilly Barstow Frances Stevens Gilley Muriel Gabriel Heltzel Marion Denton McKean Lela Blanche Coe Meyer Mary Luddemann Schedler Sally Reed Stout Helen Malarkey Thompson	53.3%
<b>1931</b> Katherine Gilbert Campbell Helen Stratton Felker Mary Beckwith Hoffman Rhoda Holman Statter	50.0%
<b>1932</b> Elyse West Clark Virginia Proctor Lull Evelyn Zehnbauer Lundgren Jane Campbell Munly Sara-Jane Henderson Norwood Helen Monner Ward	42.9%
<b>1933</b> Betty Barr Patrick Doreen Plympton Strong Frances Watzek Warren	37.5%

<b>1934</b> Esther Jobes Holmes Elizabeth Watkins Jorgensen Elizabeth Pownall Swindells Ruth Simmonds Tunturi	33.3%
---	-------



▲ SHH alumna Jane Mount Ammerman '35 (shown here with her husband, Leland) in Brookings, OR during the visit of Headmaster Peter Stevens in July 1994.

<b>1935</b> Jane Mount Ammerman Lillian Brooke Austin Anita Cadonau Birkland Margaret Mann Holmgren Geraldine Hanny Sargent	35.7%
--	-------

<b>1936</b> Peggy Smith Newhall Alice Freeze Warner	18.2%
---	-------

<b>1937</b> Jean Groves Bullwinkle Janet Mann Crawford Nancy Stolte Rosenfeld	60.0%
--	-------

<b>1938</b> Wilda Jerman Plympton	9.1%
--------------------------------------	------

<b>1939</b> Susan Lake Howell Susanne Ehrhardt Malone Mary Louise Vincent Powell	20.0%
---	-------



▲ Members of classes from the '30's through the '80's were able to attend the first annual Arizona Alumni Gathering in April, 1994.

<b>1940</b> Georgiale Housman Coble Marjorie Besson Fintz Alice Moore Iltz Cozette Scott McGuire	25.0%
--	-------

<b>1941</b> June Fowler Clark Katherine Jane Robinson Henshaw Mary Sumner Jackson Jenelyn Gaston Wessler Connie Maguire Wilson Rhoda Thurm Zobrist	42.9%
--	-------

<b>1942</b> Margaret Saari Dether Charmian Kolar Hilleary	16.7%
---	-------

<b>1943</b> Mary Serruys Alfont Sylvia Thomas Boydston	18.2%
--	-------



▲ St. Helens Hall graduates of 1944 gathered for their 50th reunion in June. From left, Betsy Parker Belles, Gloria Jokstad Jones, Alice Ashton Heyl, Joan Lucas Craig, and Anne Carter Brainerd.

<b>1944</b> Betsy Parker Belles Joan Lucas Craig Joan Irwin Green Patricia Bendshadler Hamilton Jean Irwin Hoffman Gloria Jokstad Jones Nadine Honeyman Wilhelm	50.0%
--	-------

<b>1945</b> Patricia Walker Ackerman Chiane Gerow Kathrens Molly Clair Krausse Susan Teague Lake Patricia Pearson Peterson	38.5%
---	-------

<b>1946</b> Carla Rebagliati Black Donna Dustin Courtney Elizabeth Kelley Crookham Lou LaChappelle Doyle Jean Edmonds Kortum Barbara Henton Marontate Florene Inglis Miller Patricia Brock Miller	50.0%
---	-------

<b>1947</b> Leslie Spawn McVey	6.7%
-----------------------------------	------

<b>1948</b> Shirley Barton Priscilla Ann Adams Davis Mary Orr Edson Delight Kolar Leonard Kathryn Huenergard Price	33.3%
---	-------



▲ Members of the graduating class of 1949 attended the Reunion Weekend luncheon. From left, Martha Walter Thistlethwaite, Barbara Jean Freeman Hinman, Dorothy Hays Campbell, Susan Hunt Dudley, Pat Harry Bolen, Bhradde Eversaul Collins, and Gloria Spencer Crowson.

<b>1949</b> Janet Banks Bhradde Mae Schmand Collins Gloria Spencer Crowson Bonnie Dunbar Hahn Barbara Freeman Hinman Mary Lou Rose Johnson Betty Charlton Labadie	46.7%
--	-------

<b>1950</b> Nancy Sigurdson Austin Diane Dawson Schulz	18.2%
--	-------

<b>1951</b> Caroline Kuhn Meehan June Dunbar Phillips Floy Louise vonGroenewald Senior	23.1%
---	-------

## GIVING BY AFFILIATION

**1952** 7.7%  
Garland Sorenson Lewis

**1953** 11.1%  
Cynthia Coats Railton



▲ On the OES campus for their 40th reunion were SHH graduates (from left) Marilyn Hutchings Hogrefe, Jacqueline Howard Kraft, Nancy Cannon Goodell, Jody Fields Willson, and Anne Stegner Bell.

**1954** 11.1%  
Diana Barnard Gray

**1955** 44.4%  
Marietta Lind Kuykendall  
Sylvia Rawlinson Mathews  
Jemi Cain Spriggs  
Virginia Euwer Wolff

**1956** 22.2%  
Karen Barner Anderson  
Susan Dodge Moore

**1957** 66.7%  
Norma Fisher Atkins  
Kathleen Egans Braddy  
Nancy Morris Feldman  
Margaret Keiter Lopic  
Janice Wiecks Reinmiller  
Sally Soukup Salsig

**1958** 28.6%  
Amy Fields  
Nancy Walden Larsen

**1959** 23.1%  
Sally Bowe Beaton  
Patty Harriman Page  
Meridel Prideaux

**1960** 16.7%  
Carol Pope Carney  
Carol Lynn Furlong Cunningham

**1961** 15.4%  
Sally Stevens Bjerklie  
Diana Fanning

**1962** 28.6%  
Merrily Pittman Hansen  
Lucy Crenshaw Imano  
Randlett Walster  
Vicki Webster

**1963** 25.0%  
Judy Hill Becker  
Gay Pennington Paschoal  
Nan Butler Perrott  
Carol Lundy Wolfe

**1964** 27.3%  
Kathleen Sell Bafetti  
Joan Lasselle  
Nancy Reynolds

**1965** 52.4%  
Nancy Bishop Dietrich  
Heidi Bildsoe Hansen  
Cinda Lucinda Taylor Hoffman  
Katherine Jeffcott  
Susie Kasper  
Mary Lampson King  
Lillian A. Eaton Kusiek  
Natalie Giustina Newlove  
Anne S. Thompson Paul  
Heidi McIsaac Shuford  
Jane Alice Thielsen

**1966** 39.3%  
Sheila Maley Bates  
Vickii Bublitz  
Diana Beebe Buchanan  
Sharon Gallentine Douglas  
Katherine Karafotias  
Toni Lehman  
Elizabeth Marsh  
Carolyn Morris Matney  
Holly Pittman  
Margaret Howard Singleton  
Anne Stevenson

**1967** 25.0%  
Jane Adams Patterson  
Rebecca Reynolds  
Mary Lou Sanford Ryan  
Lee Collins Vest

**1968** 45.8%  
Leslie Stevenson Campbell  
Janis Williamson Grout  
Carol Gillies Handke  
Linda Thomas Hendrickson  
Betty Rennett Hooton  
Marcy Drain Jordan  
Sarah Collins Milliken  
Mia Hervin Moore  
Susan Crenshaw Proudfoot  
Barbara Pond Scott  
Deborah McDonald Swett

**1969** 14.3%  
Marybeth Merwin Mitchell  
Libby Bishop Westlund

**1970** 17.6%  
Nadine Christenson Carlile  
Alexandra Dussin Cook  
Ann Ginder Parr

**1971** 20.0%  
Deborah LeBeck Bishop  
Kathy Reynolds Janssen  
Karin Randall

**1972** 22.2%  
Bernice Stevenson Bean  
Sallie Cheatham Cutler  
Tami Lake Jewett  
Carrie Sammons

### St. Helens Junior College

**1934** 33.3%  
Irma McPherson Rees  
Flora Fetz Roholt

**1935** 17.4%  
Maxine Van Patten Dickey  
Mary Janelle Jacques  
Lenore Lavanture Klink  
Elizabeth Little

**1936** 33.3%  
Janet Cutler Buchanan  
Edwards Logan Edwards  
Virginia Pierson Imhof  
Patricia Kellogg Roberts  
Doris Lincoln Trepp

**1937** 9.1%  
Margaret Hinkle Davidson  
Lois Sylvester Ingala

**1938** 31.8%  
Anita Cadonau Birkland  
Betty Lou Phelps Dunlop  
Jeannette Hoss  
Darlene Harris Jones  
Peggy Smith Newhall  
Pearl Buckler Steele  
Alice Freeze Warner

**1939** 22.2%  
Yasuko Tsuboi Fukano  
Virgene Wade Gillett  
Jane Merriman Gilpin  
Anne Jones Taggard

**1940** 33.3%  
Patricia Ludwick Dowling  
Martha Randall Mason  
Vivian McNamee  
Frann Robertson Miescher  
Esther Lenon Setterberg

**1941** 52.0%  
Mary Eleanor Bedwell Bothwell  
Audra Haffenden Braun  
Mary Butler Bright  
Jane Deacon Curry  
Robin Oulton Decius  
Elizabeth Arnreiter Franklin  
Maxine Chu Leo  
Ruth Page Lotz  
Patricia Simmons Maulbetsch  
Muriel Eddy McBee  
Dorothy Lilly Nestelle

Helen Richards Schafer  
Doris Stein Young

**1942** 10.5%  
Nancy Hallock Jones  
Kim Tanida Kanaya

**1943** 27.3%  
Elia Leibold Bubenik  
Dorothea Thomas Guynup  
Rhoda Thurm Zobrist



▲ Members of the Class of 1944 JC on the occasion of their 50th reunion. From left, Marjorie Malmquist McLeod, Elise Bede Swan, Helen Mills Stoll, and Ruth Curry Rathke.

**1944** 9.1%  
Helen Mills Stoll

**1945** 36.4%  
Jane Greenberg Downs  
June Richards Enevoldsen  
Beverly Triplett Hawks  
Katherine Joslin Jones

**1946** 33.3%  
Georgeanna Adam Spencer

**1947** 29.4%  
Barbara Needham Berglind  
Beverly Hein Culp  
Catherine Owens George  
Jean Ehlen Morrison  
May Zakoji Sakai

**1948** 33.3%  
Patricia Kendall Apperson  
Helen McKeever Chastain  
Doree Carter Keller

### Bishop Dagwell Hall

**1967** 40.0%  
Rick Carpenter  
Bill Marshall  
James Rear  
Tim Wallace

**1968** 44.4%  
Dan Driscoll  
John Flowerree  
Nicholas Peachy  
Ben Westlund

# GIVING BY AFFILIATION

**1969** 46.2%  
 Eliot Cobb  
 Jim O'Donnell  
 Paul Proudfoot  
 Chuck Reynolds  
 Richard Westlund  
 Mark Workman

**1970** 30.8%  
 Alan Dappen  
 Ken Sakai  
 Paul Schlesinger  
 Kris Van Hatcher

**1971** 20.0%  
 Cornelius Duffie  
 Marshall Spencer

**1972** 28.6%  
 Warren Bean  
 Stephen Cuffel  
 Andy Dappen  
 Fred Ellis

## Oregon Episcopal School

**1973** 15.8%  
 Martha Bullwinkle Dorrell  
 James Mosher  
 Kannes Noack



▲ Present for their 20th reunion were members of the Class of 1974. From left, Laura Maeda, Jim Weber, Liza Lilley, Heather (Joan Bokemeier), Brent Erensel, John Coffey, and Scott Harlow.

**1974** 55.2%  
 Autumn Alexander-Skeen  
 Holly Parker Ande  
 Barbie Babson  
 John Coffey  
 Brent Erensel  
 Scott Harlow  
 Takashi Hashimoto  
 Heather (Joan Bokemeier)  
 Kathy Banks Kelly  
 Liza Lilley  
 Max Miller  
 Tammy Selfridge Musser  
 Osa Arnold Schultz  
 Richard Talbot  
 James W. Weber  
 John Wysham

**1975** 34.6%  
 Jean Duffie Benedict  
 Susan Brustad Christensen  
 Lynea George Davis  
 Barbara Bolton Hopewell  
 Ellen Montague Kuzlik  
 Chris McMurtry  
 Meg Rogers  
 Morris Westlund  
 Nancy Woodworth Young



▲ Future OES graduate? Joanne Winningstad Anderson '76 and her husband Glenn are the proud parents of Gail Marie Anderson, born in October 1993.

**1976** 17.6%  
 Perri Ann Combs-Taber  
 Ed Stevens  
 Allie Zimmer-Harmon

**1977** 18.5%  
 Becky Grimes Gilmore  
 Eric Kobbe  
 Jenny Holtz Seton  
 Bob Smith  
 Susanna Dant Soper

**1978** 19.0%  
 Geoff Chew  
 Daniel Corona  
 Doug Kezeor  
 Susan Krohn Koe



▲ Helga Daret, who taught at SHH and OES for more than thirty years, was presented with the Honorary Alumni Award for 1993-94 by Alumni Association President Sean Kuni '81.

**1979** 34.8%  
 Tom Bice  
 Norma Dulin  
 Maggie Groening  
 Kevin Kraft  
 Susan Eckhardt Purcell  
 Clenton Richardson  
 Katharine Sammons  
 Daphne Wysham

**1980** 20.7%  
 Beresford Paul Daigle  
 Melanie Ellison  
 Ashley Kirkman  
 Petra Wandel-Pine  
 Mike Shepherd  
 Brenda Graves Wiens

**1981** 20.8%  
 Drue Ferguson  
 Marleine Hofmann  
 Sean Kuni  
 Sarah Stephenson  
 Kathleen Douglas Van Every



▲ Graduates from the 80's reunited in Longview, WA on the occasion of the marriage of Giles Thompson '88 to Marie Lorraine Giles and Marie's son Lewis Thompson was also baptized by Father Roy Coulter on this special day.

**1982** 23.5%  
 Steve Eckhardt  
 Ann Highet  
 Shannon Mong Joseph  
 Christine Menefee

**1983** 11.1%  
 Kelly Dwyer  
 Jon Grodem

**1984** 27.3%  
 Marci Lematta Abel  
 Deirdre Dobbins Harrington  
 Thom Hayes  
 Paige Parker Kuni  
 Duane H. Laun  
 Jack McCann

**1985** 20.0%  
 Jennifer Gentry  
 James Isaak  
 Helen Kirschner  
 Greg Simon

**1986** 7.1%  
 Debbie Rath Kennison  
 Percy Webster

**1987** 7.3%  
 Chelsea Emery  
 Aimee Froom  
 Scott Klemp

**1988** 22.9%  
 Ayden Adler  
 Meredith Boatsman  
 Brinton Clark  
 Heather Harrison  
 Courtney Boatsman Howard  
 Tiffani Lee  
 Laura Wade Matthes  
 Sandy Nantt  
 Lance Steinberg

**1989** 5.0%  
 Margaret Nichols  
 Mary Waite

**1990** 10.3%  
 Ashleigh Asaph  
 Matt Clark  
 Kuniko Kurisu  
 Marie-Claire Vohnson-Streight

**1991** 13.6%  
 Andrea Bell  
 Sherrill Bennington  
 Martin Bleeck  
 Clair Clark  
 Sharon Gebbie  
 Roman Zawodny

**1992** 4.3%  
 Shannon Dooley  
 Tara Sorensen

**1993** 9.3%  
 Cam Freres  
 Kevin Holliday  
 Tom Tewksbury  
 Laura Wallace



▲ Former faculty from SHH, BDH and OES gathered on the occasion of the 1994 Reunion Weekend on the OES campus. Pictured are The Rev. Frank Evenson, Gary Craigmoles, Lenore Klink, Eleanor Fass, Fred Wood, Candi Palmer, Helga Daret, and Carl Reynolds.

# GIVING BY AFFILIATION

## PAST PARENTS

Dr. & Mrs. James W. Asaph  
 Stephen E. & Melissa N. Babson  
 Mr. & Mrs. Ralph Bellande  
 Dr. & Mrs. John Berwind  
 Dr. & Mrs. Robert W. Blakeley  
 Harley & Lynn Boatsman  
 Mr. & Mrs. Theodore H. Bokemeier  
 James & Betty Bosen  
 William Den Beste & Ethelwyn  
 Bowler  
 William M. & Bonnie A. Brod  
 Ann & Dave G. Bronson Jr.  
 Mr. & Mrs. Dave Brooks  
 Mr. Harry Bruss  
 Drs. Moir & Sudge Budden  
 Mrs. Jean Groves Bullwinkle  
 Mrs. Eleanor Burkitt  
 Mr. & Mrs. Ed Burton  
 Joyce Atlee Campbell  
 Mrs. Alyce Cheatham  
 Mr. & Mrs. Mark Childs  
 Dr. & Mrs. Edgar Clark  
 Mrs. George W. Conklin  
 Don & JoAnn Cornell  
 The Very Rev. & Mrs. Roy Coulter  
 Mrs. Kuniko de Weese  
 Harry & Merry Demarest  
 Mr. Harry A. Dick Jr.  
 Mr. & Mrs. Paul Diment  
 John & Lillian Douglas  
 Mrs. Nancy Doulis  
 Cecil & Sally Drinkward  
 Ms. Nancy Duggan  
 Mr. & Mrs. Lee T. Dulin  
 Mr. Henry M. Emery  
 Mrs. Susan Woodruff Emery  
 Ms. Kathryn Engholm  
 Ms. Bertha M. Ferran  
 Dr. & Mrs. Bruce D. Fiske  
 Mrs. Norman W. Frink Sr.  
 Dr. & Mrs. Donald W. Froom  
 Judge Helen J. Frye  
 Drs. Michael & Barbara Gaines  
 Michael & Clara Gamache  
 Richard & Janet H. Geary  
 Mr. Jon Geffen  
 Mr. & Mrs. Paul Gerhardt  
 Michael & Sidney Gold  
 Mr. & Mrs. Richard Graves  
 Robert & Nancy Gray  
 Mr. & Mrs. George Grimes  
 Mr. & Mrs. Robert E. Grissom  
 Mrs. Gail Bitar Grodem  
 Howard & Molly Harris  
 Mrs. Betty Lou Hatcher  
 T. David & Gerri Hayes  
 Mrs. Peter Hoffman  
 Mr. & Mrs. Robert A. Holmstrom  
 Mr. & Mrs. James Holtz  
 Ms. Betty Hooton  
 Henry & Susan Jakubiak  
 Marion & Gordon Janney  
 Bill & Marcia Johnson  
 Mrs. Peggy Karafotias  
 Mr. & Mrs. Richard B. Keller  
 Mrs. George A.D. Kerr

William G. Kirkman  
 Mr. & Mrs. Richard Kohnstamm  
 Wayne & Joan Kuni  
 Mr. & Mrs. Hoichi Kurisu  
 Mr. & Mrs. Tsutomu Kyuzaki  
 Mr. & Mrs. W.R. Lake Jr.  
 Mr. & Mrs. Thomas M. Landye  
 Jamie & Joanna Langdale  
 Wes & Nancy Lematta  
 Drs. Fernando & Dolores Leon  
 Dana Mosher Lewis  
 Dr. Caroline Litzenberger  
 Sylvia & John Mathews  
 John & Gail McAllister  
 Mr. & Mrs. Donald McClave  
 Curtis & Paula McCracken  
 Mrs. Mary H. Naab  
 The Rev. David Pace  
 Mr. Gary R. Pope  
 Mr. & Mrs. Richard F. Porter  
 Mr. & Mrs. Ellsworth D. Purdy  
 Mr. Dale B. Ramerman  
 Richard & Louise Rawlinson  
 Mr. & Mrs. Edward Rubovits



▲ OES students in chapel service at St. John's Parish on the OES campus.

Mr. & Mrs. William Sakai  
 Ivan & Ruth Sandoz  
 Mrs. Joyce Schafer  
 Howard W. & Eileen E. Schleppe  
 Michael & Karen Sherman  
 Mrs. Katherine Sotka  
 Mr. & Mrs. Douglas H. Stearns  
 Robert & Wendy Steinberg  
 Leigh D. & Mary G. Stephenson  
 Mr. & Mrs. Wm. T. C. Stevens  
 Pam Vohnson & David Streight  
 Mrs. Richard C. Tevis  
 Mark & Helen Tochen  
 Mr. & Mrs. Henry Townend  
 Mr. & Mrs. Charles W. Tuttle Jr.  
 Mrs. Dorothy M. Ueland  
 Ed & Wendy Ulman  
 John & Kathy Utz  
 Mr. & Mrs. R.A. Vitousek Jr.  
 Dale & Patricia Walhood  
 Mrs. Helen F. Weber  
 Darrell Cluke & Sherrill Whittemore  
 Lynne Parise & Mark Williams  
 Prof. J.K. & La Rae Zawodny  
 Milton & Jean Zell  
 Mr. John L. Zenor  
 Carol Zosel & Charles Harper



▲ Former OES parents Sally Drinkward (now an OES grandparent) and Ed Clark.

## GRANDPARENTS

Mr. & Mrs. John Adams  
 Mr. & Ms. David Bailey  
 Mrs. Ned Barclay Ball  
 Mrs. Mary Ellen Bechen  
 Mr. William E. Bethards  
 Dr. Anita Cadonau Birkland  
 Mr. Garth M. Brodie  
 Mrs. Barbara Towne Brown  
 Mrs. Eleanor Burkitt  
 Leonard & Virginia Cain  
 Mrs. Alyce Cheatham  
 Mr. & Mrs. F.N. Creakman  
 Mrs. H. Lennox H. Dick  
 Cecil & Sally Drinkward  
 Mrs. Maria A. Elwell  
 Mr. & Mrs. Donald G. Findlay  
 Mrs. Robert T. Foote  
 Dr. Merle Frampton  
 Mrs. Beverly Goldberg  
 Mr. & Mrs. Harold Gray Sr.  
 Mrs. Carlos Hamilton  
 Mr. & Mrs. James Harder  
 Ms. Alice Haskins  
 Mrs. Betty Lou Hatcher  
 John & Jean Hedberg  
 Jim & Barbara Herbold  
 M.E. & Loraine Hesla  
 Mr. & Mrs. Walter M. Higgins  
 Mrs. M.B. Hoffman  
 Mr. & Mrs. Norman Holm  
 Anne & Brantley Holt  
 Mr. & Mrs. John Hryniw  
 Ms. Jane Huseby  
 Mr. John Karamanos Jr.  
 The Rev. Orme Kellett  
 August & Mallie Kollom  
 Wayne & Joan Kuni  
 Mike & Mildred Lillpop  
 Mrs. C.L. Lindquist  
 Mrs. J. Harold Lineberger  
 Mr. Harry Loggan  
 Mr. & Ms. John Longfield  
 Mr. & Mrs. William Lukens  
 Mrs. Agnes L. Lundberg  
 Mrs. Evelyn Z. Lundgren  
 Mr. & Mrs. Robert A. Maurer  
 Mrs. Linita McDonald  
 Mr. & Mrs. John F. McLain  
 Mr. George E. Moller

Miri Lou Davis & Carter Morey  
 Mrs. Frances A. Morgan  
 Mrs. Lloyd Myers  
 Mr. & Mrs. Harry Namba  
 Mr. & Mrs. William Nance  
 Mrs. Margaret Hall Newbegin  
 Ms. Margaret L. Newhall  
 Howard & Monta Osborne  
 Dr. & Mrs. David Osgood  
 Ms. Shirley Patterson  
 Mrs. Lois Plawchan  
 Ms. Helen Ports  
 Ms. Betty S. Reardon  
 Mr. & Mrs. Joe Robertson  
 Dr. & Mrs. George Robins  
 Ms. Elizabeth B. Robinson  
 Mr. & Mrs. William Sakai  
 Frank W. & Betty R. Scheible  
 Mr. & Mrs. Guerry R. Smith  
 John & Elizabeth Smith  
 Mr. & Mrs. Robert Wm. Smith  
 Russ & Donna Spere  
 Mr. & Mrs. Wm. T. C. Stevens  
 Mr. & Mrs. Thomas D. Taylor  
 Ms. Kay V. Thomas  
 Ms. Jackie L. Thompson  
 Jean Lawrence Thorpe  
 Mr. & Mrs. Richard Tooze  
 Mrs. Ruth B. Turney  
 Mr. & Mrs. Seymour Waldman  
 Mr. & Mrs. Frank M. Warren Sr.  
 Mr. & Mrs. A.O. Watson  
 Mr. & Mrs. Robert Wechsler  
 Mr. & Ms. Gunther Weiss  
 Bill & Barbara White  
 Dr. Merle Frampton  
 Mrs. Beverly Goldberg  
 Ms. Jo Williams  
 Mr. & Mrs. Norman A. Workman  
 George & Eleanor Zendt



▲ Norm Winningstad, father of Joanne Winningstad Anderson '76 and grandparent of current OES students, 10th grader Allison, 7th graders Christopher and Dennis and 3rd grader Rachel.

## GIVING BY AFFILIATION

### FACULTY & STAFF

Rose Bardel  
 Sherrie Barss  
 Bradley Baugher  
 Donna Beemer  
 Maggie Bellafronto  
 Robert L. Beyer  
 Cassandra Bowman  
 Stephen Brown  
 Kathleen Burwash  
 Sharon Cade  
 Sandra Cade  
 Norene Calkins  
 John Capen  
 Anne Cass  
 Charyl Cathey  
 Michele Cathey  
 Linda Chavez  
 Diana Chenoweth  
 Corbet Clark  
 Donna Cody  
 Coleen Conkey  
 Marilyn Connell  
 Michael N. Cook  
 Scott Corris  
 The Very Rev. Roy Coulter  
 Gary Crossman  
 Michael Devenney  
 Finn Dollis  
 Cynthia Doran  
 Nancy Doulis  
 Alyce Drescher  
 Nancy Dunn  
 Leona Erickson  
 Charles R. Farrell  
 Diane Flack  
 Jim Fleury  
 Joan Foy  
 Pat Freeman  
 Robbi Garvin  
 Viktor Gavrilin  
 John Gawliста  
 Michelle Ghattas  
 Claire Gilbert  
 Sidney Gold  
 David Goodman-Farley  
 Joel Gray  
 Nancy Gray  
 Bernice Greenfield  
 Hamilton Gregg  
 Kris Gregg  
 Katherine Gross  
 Terry Hansen  
 Gary Havlik  
 Patty Heath  
 Rosa Hemphill  
 Imogene Hollis  
 Toni Holmberg  
 Paula Hunger  
 Janelle Janutka  
 Susan Jensen  
 Jane Kenney-Norberg  
 John H. Kerslake  
 Jane Kirkpatrick  
 Helen M. Kirschner

Sue Knight  
 Elizabeth Kortenhof  
 William Lamb  
 Sue Larson  
 John LeCavalier  
 Allan Lehman  
 Joan Leigh  
 Constance Leonard  
 Dana Mosher Lewis  
 Helen Linster  
 Yefim Litinetsky  
 Edward Liu  
 Chris Locke  
 Kate Loggan  
 Darele Lowry  
 Thelma Lowry  
 Judy Lynch  
 Matthew Lyon  
 Jeff Marsh  
 Troy Marsh  
 Cindi Marshall  
 Craig McClure  
 Debbie McNeely  
 Diane Meade  
 Christina Meyerhoff  
 Joyce Mijo  
 Lilly Moore  
 Karen Murray  
 Kathy Narramore  
 Sue Nicol  
 Jack O'Brien  
 Jimm Omodt  
 The Rev. David Pace  
 Louis H. Paff  
 Jean Patsis  
 LouAnn Pickering  
 Gary R. Pope  
 Eileen M. Preston  
 Edward Purdy  
 Anne S. Robinson  
 Rothrock  
 Nancy Rubovits  
 Lynne Sadler  
 Mary W. Sapp  
 Joyce Schafer  
 Joan Schaller  
 Debby Schaffler  
 Karen Seder  
 Elaine Seeley  
 Florence Selvidge  
 Moneeka Settles  
 Richard Sherwood  
 Bev Shue



▲ US science teacher Bob Beyer retired this year after working at OES for six years.

Alice K. Simpson  
 Paula Spooner  
 Bonnie Stanke  
 Susan Stark  
 Tye Steinbach  
 Hope Stevens  
 Peter W. Stevens  
 Linda Stewart  
 Shelley Stoffer  
 David Streight  
 Pam Vohnson  
 Karen Talus  
 Jay Thomas  
 Maurice Thompson  
 Becky Tooley  
 Luba Tuck  
 Kris Van Hatcher  
 Barbara Vardanega  
 Jon von Behren  
 Samuel Wagner  
 Thomas Wakeling  
 Patricia Walhood  
 Mary Warinner  
 Shelley Weiller  
 Robin Weitzer  
 Douglas Whitmore  
 Laura Wilson  
 Marie Winston  
 Stephen Wong  
 Sylvia Wood  
 Cherie Yokota  
 Kelly Yustin  
 Harvey Zendt  
 Louisa Zendt  
 Carol Zosel

### FRIENDS

Herbert & Iris Arnett  
 Kay & Dave Bristow  
 Mr. Raleigh Butterfield  
 Mr. & Mrs. Robert A. Chumbook  
 Ms. Barbara Davis  
 Dr. Dejan Dordevich  
 Mr. & Mrs. William W. Dunlap  
 William Seifert Jr.  
 Fanno Creek Friends Worship Group  
 Mrs. Dwight Follett  
 Mrs. Florence Fuller  
 Mr. A. Bruce Hallock  
 Mr. & Mrs. Norman Hammersly  
 Ms. Carla Heckrodt  
 John & Barbara Heffernan  
 Ms. Maryanne Hill  
 Sue & Tom Horstmann  
 Mr. Donald Horton  
 Mrs. Dorothy Sloan Huey  
 Mrs. Louise James  
 Mrs. Sally Walsh Johnson  
 Mr. John Halsey Jones  
 Mr. Marion W. Jones  
 Mr. & Mrs. Harold H. Keil  
 James & Mary Kruchoski  
 Mr. R.G. LaFollette  
 Ms. Helena G. Barbey Lankton  
 Mrs. Georgia T. Lekas  
 Mrs. Mary Ellen Lynd  
 Dr. Albert F. Macho

Lady McDonald  
 Capt. Joseph M.  
 McDowell, U.S.N. (Ret.)  
 Mary Meade  
 Ellen Lanier-Phelps  
 Metro  
 Mr. & Mrs. Kenneth R. Meyer  
 Mr. Richard Meyer  
 Mrs. Elizabeth Netcher  
 OES Men's Over 30 Basketball Team  
 Mr. & Mrs. Monford Orloff  
 Thomas & Victoria Oxholm  
 Ms. Judith Parsons  
 Ms. Sharon K. Paz  
 Mr. & Mrs. Alfred D. Scarbrough  
 Mr. Jordan D. Schnitzer  
 Mr. & Mrs. Richard Schuurman  
 Waldemar & Patricia Seton  
 Mr. Paul B. Smith  
 The Sisters of St. John Baptist  
 Mrs. William Tegart  
 Ms. Barbara B. Trudel  
 Mr. & Mrs. George R. Turney  
 Ms. Virginia D. Tyler  
 Ms. Judith Clarke Visnick  
 Mr. Hugh Walker  
 Mr. & Mrs. Charles L. Warren  
 Jill & Ted Welsh  
 Mrs. Betty Jo Wright

### CORPORATIONS/ FOUNDATIONS

Adams Foundation  
 Annie Bloom's Books  
 Aon Corporation  
 The Bank of New York  
 The Boeing Company  
 Estate of Spencer R. Collins  
 Cray Research Inc.  
 Esco Corporation  
 Henry Failing Fund  
 The Farago Foundation  
 Floweree Foundation  
 GTE Foundation  
 Halton Foundation  
 The Ralph & Adolph Jacobs  
 Foundation  
 James River Corporation  
 Jewett, Barton, Leavy & Kern  
 S.S. Johnson Foundation  
 Kemper Securities, Inc.  
 James A. & Fannie E. Malarkey  
 Foundation  
 May Dept. Stores Co. Foundation  
 Merrill Lynch & Co.  
 Nike/Inc.  
 Northwestern Mutual Life  
 Persis Hawaii Foundation  
 PPG Industries Foundation  
 Prudential Securities  
 The Reebok Foundation  
 Thomas D. Taylor Foundation  
 Tektronix Foundation  
 US WEST Foundation  
 Washington Mutual  
 West One Bank

# VOLUNTEERS AND SPECIAL EVENTS



▲ *Volunteers' Common Link Chair Anne Thanbouser at the OES Fund Kickoff Luncheon, 1993.*

## THE VOLUNTEERS' COMMON LINK AND PARENT ASSOCIATION LINKS

The Volunteers' Common Link, the all-OES volunteer coordinating committee, oversees the volunteer program at OES and acts as the communication link for community-wide interests and activities in cooperation with the Parent Association Links (PALs), School administration, and the OES Board of Trustees. OES is indebted to its community of volunteers, who contribute so much time and effort to the School.

### Volunteers' Common Link Members

Anne Thanbouser, *Chair*  
 Katie Garvie, *Chair of Volunteers*  
 Kathy Braut, *Treasurer*  
 Sharon Hewitt, *Secretary*  
 Judy Jensen, *Community Parent Education*  
 Sue Russell and Alice Greene (US)  
 Cherie Gregg and Meredith Hilderbrand (MS)  
 Sandra Miles and Masami Saitoh (LS), *Community Social Events*  
 Carla Wilson, *Volunteer Office Computer Operations*  
 Darlene Kaempf, *Chair US PAL*  
 Margie Adams, *US PAL Parent Education*  
 Candy Snyder, *US PAL Volunteer Coordinator*  
 Carol Floten, Pam Matheson, Patti Knollman, Jana Westlund  
*Co-Chairs MS PAL*

Sue Gundle, *MS PAL Volunteer Coordinator*  
 Leslie Workman, *Chair LS PAL*  
 Kay Brantley, *LS PAL Volunteer Coordinator*

### Parent Association Link Officers and Committee Chairs

Kathleen Ames  
 Margie Adams  
 Karen Alfond  
 Kay Brantley  
 Jane Burleson  
 Chris Cooper  
 Judy Crow  
 Linda Dickenson  
 Julie Drinkward  
 Barbara Durrett  
 Sally Fish  
 Carol Floten  
 Karen Grauert  
 Lynne Greenberg  
 Pauline Gregory  
 Sharon Hewitt  
 Jan Hibbard  
 Ginger Iles  
 Darlene Kaempf  
 Sharleen Kleber  
 Patti Knollman  
 Mary Laird  
 Christi Lee  
 Cathy Jo Lindquist  
 Pam Matheson  
 Atsuko Matsuyama  
 Dawn Milliron  
 Judy Moreland  
 Diane Morgan  
 Dana Ostenson  
 Miriam Rogers  
 Chris Reynolds  
 Mary Sapp  
 Candy Snyder  
 Adrienne Souther  
 Clyde Speidel  
 Gail Sweeney  
 Janet Trullinger  
 Jana Westlund  
 Leslie Workman  
 Annette Zack



▲ *OES volunteers organize many of the activities for the School community, including the annual LS Halloween party.*



▲ *Sean Kuni '81, 1993-94 Alumni Association President.*

## OES ALUMNI ASSOCIATION

The 1993-94 OES Alumni Association had a wonderful year! Record breaking numbers of alumni attended Founders' Day, a new Alumni Directory was printed (the first in 13 years!) three regional alumni events were held in San Francisco, Seattle and Tucson, and many new and existing activities were enjoyed by alumni of all ages. The strength of the Alumni Association continues to grow with the energy and support of all the Alumni Board members!

Mr. Sean Kuni '81, *President*  
 Ms. Elizabeth Lilley '74, *Vice President*  
 Mrs. Patricia Kendall Apperson '48 JC  
 Mrs. Meg Finch Bishop '77  
 Mr. P. Beresford Daigle '80  
 Mrs. Marjory Holman Day '28  
 Ms. Marilyn De Vault '67  
 Ms. Kelly Dwyer '83  
 Mrs. Nancy Morris Feldman '57  
 Mrs. Helen Stratton Felker '31  
 Mr. Chris Johnson '79  
 Mr. Jack McCann Jr. '84  
 Mrs. Sandy Nantt '88  
 Ms. Meridel Prideaux '59, *Former President*  
 Mrs. Janice Wiecks Reinmiller '57  
 Mr. Greg Simon '85  
 Mrs. Alice K. Trehwella '41  
 Ms. Alexandra Zimmer-Harmon '76

## CLASS AGENTS

The second year of the class agent program was a successful one with more alumni serving as their class agents and contributing to the OES FUND. From Portland to New York, our class agent program is going strong. Thank you to the all of the class agents for their time and dedication to the School and their class!



▲ *1993-94 OES Fund Chair, Pat Karamanos.*

Patricia Kendall Apperson '48  
 Norma Fisher Atkins '57  
 Sylvia Thomas Boydston '43  
 Courtney Brown '92  
 Jean Groves Bullwinkle '37  
 Katharine Gilbert Campbell '31  
 Daniel Corona '78  
 P. Beresford Daigle '80  
 Marjory Holman Day '28  
 Daniel Diman '92  
 Martha Bullwinkle Dorrell '73  
 Brent B. Erensel '74  
 Gloria Smith Flaherty '47  
 Janis Williamson Grout '68  
 Mary-Helen Duffy Hansen '45 JC  
 Caroline Haskins Hargis '40 JC  
 Robert S. Holden '79  
 Susan Lake Howell '39  
 Lucy Crenshaw Imano '62  
 Ruth Jenkins '20  
 Shannon Mong Joseph '82  
 Katherine Karafotias '66  
 Susie Kasper '65  
 Paige Parker Kuni '84  
 Nancy Walden Larsen '58  
 Julie Mack '60  
 Bill Marshall '67  
 Martha Randall Mason '40  
 Marion Denton McKean '30  
 Florene Inglis Miller '46  
 Marybeth Merwin Mitchell '69  
 Jane Campbell Munly '32

## VOLUNTEERS AND SPECIAL EVENTS

Sandy Douthit Nantt '88  
Margaret Smith Newhall '36 & 38 JC  
Betsy Bosen Parris '83  
Amaryllis Lilies Powell '49  
Meridel J. Prideaux '59  
R.E. Clenton Richardson '79  
Paul R. Schlesinger '70  
Winde Bekins Strachan '86  
Tom Tewksbury '93  
Doris Lincoln Trepp '36 JC  
Marie-Claire Vohnson-Streight '90  
Virginia Euwer Wolff '55  
Nancy Woodworth Young '75  
Alexandra Zimmer-Harmon '76  
William Thurm  
Zobrist Jr. '41 & 43 JC



▲ *Members of the 1993-94 Where the Wild Things Are Auction committee gear up for the festivities.*

### AUCTION

Half of the proceeds from the Where the Wild Things are Auction will go towards the Edward E. Ford Endowment Fund. Income from the Endowment supports the professional growth and development activities of our outstanding faculty and staff. The other half of the proceeds will have an immediate effect on faculty growth and development. It will be added to the School's 1994-95 operation budget to pay for conferences, graduate study, professional leave, research, and collaborative pedagogical efforts. Thanks to all of the parents, alumni, trustees, businesses and special friends who joined in this "wild" effort to support our faculty and staff.



▲ *Wendy Hamilton, chair of the 1993-94 Where the Wild Things Are Auction committee*

### Where the Wild Things Are Board of Directors

**Auction Chair:**  
Wendy Hamilton

**Secretary/Publicity:**  
Clyte Speidel

**Office of Operations/Control:**  
Carla Wilson

**Acquisitions:**  
Lori Diaz, Kami Fraley

**Oral Auction:**  
Suzanne Regan

**Silent Auction:**  
Miriam Rogers, Julie Drinkward

**Treasurer:**  
Carol Floten

**Invitations/Reservations:**  
Linda Dickinson

**Advertising:**  
Daisy Housel-Miller

**Catalog:**  
Cathy Krieger

**Decorations:**  
Cheryl Carrier, Suzanne James

**Food and Beverage:**  
Sheryl Acheson

**Special Events:**  
Chris Cooper

**Volunteers/Clean Up:**  
Fran von Schlegell

**Will Call/Pick Up:**  
Patti Knollman

### Volunteers

Karen Alford  
Kathleen Ames  
Sharon Barnes  
Dana Berger  
Kay Brantley

Kathy Brault  
Sharon Cade  
Norene Calkins  
Mike Carrier  
Bob Cassidy  
Jan Cassidy  
Charyl Cathey  
Nancy Chapman  
Diana Chenowith  
Donna Cody  
Gayle Collins  
Sara Cowie  
Laurie Crossman  
Judy Crow  
Bill Davenport  
Sherry Davis  
Kate Dickinson  
Natalie Dickinson  
Nate Dickinson  
Harriett Dixon  
John Dixon  
Kathy Dodds  
Wayne Drinkward  
Barbara Durrett  
Marna Elliot  
Lynne Enyeart  
David Farris  
Kendra Farris  
Diane Flack  
Pat Freeman  
John Garvie  
Katie Garvie  
Sidney Gold  
Karen Grauert  
Bob Greenberg  
Suzanne Greenberg  
Alice Greene  
Hamilton Gregg  
Susan Gundie  
Amy Haessler  
Steve Haessler  
Bob Hale  
Kelly Hale  
Friderike Heuer  
Paula Hunger  
Janelle Janutka  
Pat Karamanos  
Paul Keown  
Helen Kirschner  
Paul Knollman  
Elizabeth Kortenhof  
Paige Kuni  
Sean Kuni  
John LeCavalier  
Connie Leonard  
Chris Locke  
Matt Lyon  
Leslie Mackenzie  
Cindy Marshall  
Janet Maurer  
Matt Miller  
Mickey Morey  
Kathryn Nance  
Lee Olsen  
Dana Ostenson  
Lou Paff  
Jean Patsis  
Faye Pepin  
Christopher Platt

Kelley Platt  
David Regan  
Jeff Rippey  
Kathryn Rippey  
Anne Robinson  
Susan Robinson  
Harvey Rogers  
David Rogoway  
Lori Rogoway  
Rothrock  
Loree Sakai  
Karen Seder  
Patsy Seeley  
Alice Simpson  
Adrienne Souther  
Sue Stark  
Linda Stewart  
Shelley Stoffer  
Carrie Stuckey  
Karen Taylor  
Anne Thanouser  
Najia Totonchy  
Janet Trullinger  
John von Schlegell  
Mary Warinner  
Syd Waskey  
Jana Westlund  
Paula Westlund  
Doug Whitmore  
Jane Winger  
Leslie Workman  
Cherie Yokota  
Louisa Zendt



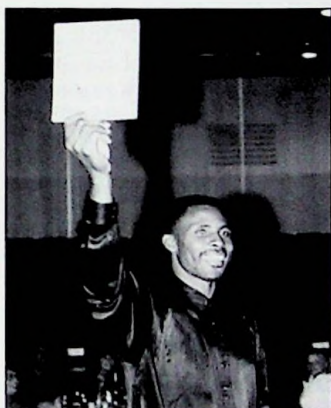
▲ *Former OES parents Ray Town and Janet Geary were among the revelers at the Wild Things Auction.*

### Where The Wild Things Are Donors

5th Grade Aardvark Artist Group  
7A Ranches  
Sheryl & Kip Acheson  
Ackroyd Photography  
Lucinda Davidson Agre L.M.T.  
Dr. & Mrs. Aftab Ahmad  
All Sports Cards  
Amadeus at the Fernwood  
Amalli's Inc.  
American Express Travel  
Service, Portland

## VOLUNTEERS AND SPECIAL EVENTS

Robert & Kathleen Ames  
 Anna Designer Fabric  
 Annie Bloom's Books  
 Arthur Andersen & Co.  
 Athletic Club of Bend  
 Keith & Sharon Barnes  
 BDii  
 Beaverton Auto Parts  
 Beaverton Batting Cage  
 Beaverton Book Company  
 Peter & Missy Bechen  
 Donna Beemer  
 Beginning School Faculty & Staff  
 Benihana's of Tokyo  
 Adeline Birkholz



▲ OES parent Charles Williams encourages the auction crowd to bid on an evening in a Trailblazer skybox, donated by Peter and Missy Bechen.

Black Butte Stables, Inc.  
 Michael Bolton  
 Bowdacious Kids  
 Erin Boyle  
 Kay & Marty Brantley  
 Jean & Kathy Brault  
 Bridgeport Brewing  
 The Brinegar Family  
 Tracy Brod  
 Dorothy Brumder Foote  
 Mary Burgess  
 Burlingame Market:  
 Tom & Jackie Calkins  
 Dr. & Mrs. Bussman  
 Joe & Sharon Cade  
 Norene Calkins  
 Leslie Campbell  
 Carla Cares  
 Leslin Carlson  
 Carson Oil Company  
 Anne & Richard Cass  
 Charyl Cathey  
 Nancy & Richard Chapman  
 Deb Chessar  
 Chuck E. Cheese's Pizzatime Theater  
 Ed & Janet Clark  
 Myra Clark

Philip Clark  
 Cocoa Mill Music  
 Donna Cody  
 Michael & Pamela Coffeen  
 Dennis H., Gayle & Jessica Collins  
 Marilyn Connell  
 Chris & Paul Cooper  
 Scott Corris  
 Cosmic Faces Facepainting -  
 Sascha Gordon  
 John & Ann Coulter  
 The Very Rev. C. Roy Coulter  
 Country Gardens  
 Sarah Cowie  
 Creative Images Photography  
 Gary Crossman  
 Annie Cruz  
 Fernanda D'Agostino  
 Mary Davis  
 Demetri's Mediterranean  
 Dennis Uniform  
 Martha Denniston  
 Mike DePalmer  
 Designs in Clay - Theresa Smith  
 Details by Patricia Green  
 Mike Devenney  
 Linda & Nate Dickinson  
 Discovery Zone  
 Kathy Dodds & Matt Miller  
 Stephen & Tina Donovan  
 Cynthia K. Doran  
 Ulla & John Drell  
 Alyce Drescher  
 Cecil & Sally Drinkward  
 Wayne & Julie Drinkward  
 Barbara P. & Taylor Durrett  
 Bob Durst  
 Durst's Thriftway Market  
 Bruce Eaton & Diane Daley-Eaton  
 Richard Elden  
 Elizabeth Leach Gallery  
 Lou, Marna & Jordan Elliot  
 Embry & Co.  
 Ron & Lynne Enyeart  
 The Ethix Corporation  
 Steven & Nancy Eyler  
 Family Brands  
 Susan & Paul Farago  
 Farrell's Ice Cream  
 Kendra & David Farris  
 First Interstate Bank  
 Carol Floten  
 Storm Floten  
 Robert Foote  
 Brian Foulkes  
 Four Seasons Bowling Center  
 Joan & Dwight Foy  
 Ted & Diane Freres  
 G.I. Joes - The Sports and Auto Store  
 Barbara & Michael Gaines  
 Sarah & Paul Gary  
 Gerald's  
 Sean & Debbie Gilronan  
 Ginger & Pickles Bookstore  
 Sidney Gold  
 Nancy Gray  
 Ken & Randee Greenbaum  
 Bob & Suzanne Greenberg  
 Hamilton Gregg

Kris Gregg  
 Kathy Gross  
 Bob & Jennifer Groves  
 John & Susan Gundle  
 Hall Street Bar & Grill  
 Roger Hallin  
 Halton Company:  
 Mr. & Mrs. William Findlay  
 David & Wendy Hamilton  
 Harder Mechanical Contractors  
 Michael Allen Harrison  
 Harry Ritchie Jewelers  
 Brian & Janice Harwood  
 Sandy & Jeri Haskins  
 Cynthea Hayakawa  
 The Heathman Hotel  
 Claudia Hegberg  
 Sharon & Henry Hewitt  
 Jim Hibbs  
 Meredith & D.A. Hilderbrand  
 Hillsboro SkateWorld  
 Hobby Warehouse  
 Cindy & Gregg Hoffman  
 Mary Hoffman  
 Becky Holder  
 Home Depot  
 Hood River Inn  
 Hood River Windsurfing  
 House of Louie Restaurant  
 House on the Metolius  
 Lucy & Doug Houser  
 Laura Hoyt  
 The Hutchinson Family  
 Ginger Iles  
 Inn of the 7th Mountain  
 Izzy's Pizza Restaurant  
 Joseph & Colleen Jannuzzi  
 JBL & K Associates  
 Susan Jensen  
 Michael & Darlene Kaempf

Wally & Cathy Krieger  
 Kulu Farm  
 KUNI Cadillac•BMW  
 Sean Kuni  
 The Laird Family  
 Lake Grove Veterinary Clinic  
 Lakeside Gifts  
 Langdown Florist & Greenhouses  
 Lapstar, Inc. - Jai Kirwan, President  
 LaRog Jewelers  
 Sue Larson  
 Learn to Swim  
 Allan Lehman  
 Dick Lenker  
 Connie Leonard  
 Dana Lewis  
 Linaeum Corporation  
 Carole Lindell-Ross  
 Lithtex Printing  
 Lloyd Center Ice Pavilion  
 Kate Loggan  
 Lonesomeville  
 Priscilla & John Longfield  
 Lower School PAL  
 Kari Lundgren  
 Kim & Reidun Lundgren  
 Judy Lynch  
 Elisabeth & Peter Lyon  
 Matthew Lyon  
 Leslie Mackenzie  
 Magic Mountain Ski Club  
 Malibu Grand Prix  
 Marco's Cafe  
 Henrik, Britt & Pernille Martens  
 Beth Mason Atty.  
 The Mathesons  
 Meier and Frank  
 Christina Meyerhoff  
 James Miller & Laurie Hesla  
 Lynn & Scott Miller



▲ OES parents Susan and Tom Robinson participate in the bidding.

Pat & John Karamanos  
 Paul, Clyde & Brice Keown  
 Kidder Peabody  
 Jane Kirkpatrick  
 Klaus & Sharleen Kleber  
 Sue Knight  
 The Kobos Company: David Kobos  
 Mariann & Curtis Koop  
 Elizabeth Kortenhof  
 KPTV - 12

Ted & Daisy Miller  
 Drs. Miller, Hesla and Associates  
 Miller, Nash, Wiener, Hager & Carsen  
 Monograms Today  
 Lilly Moore  
 Mickey Morey  
 Diane & Greg Morgan  
 Linda Morgan  
 Mrs. Calkin's Third Grade Class

## VOLUNTEERS AND SPECIAL EVENTS



▲ OES parents Mimi Williams, Linda Morgan and Jana Westlund take a break from the festivities to pose for a photograph.

Mrs. Cody's/Mrs. Gross' Third Grade  
Mrs. Connell's First Grade  
Mrs. Drescher's First Grade  
Mrs. Kirkpatrick's First Grade  
Mrs. Larson's Third Grade Class  
Mrs. Linster's Kindergarten  
Mrs. Marshall's Kindergarten  
Mrs. Winston's/Mrs. Murray's Pre-K Class  
Mrs. Yokota's Kindergarten  
Mt. Bachelor Ski and Summer Resort  
Mt. Hood Meadows Ski Resort  
Name That Toon Japan:  
Masami Saitoh  
Frank & Kathryn Nance  
Napp Trust  
Scott, Susan & Sarah Nicol  
Norm Stoll School of Dance  
Northwest Legends Salon  
The Oak Mill  
Oaks Park Association  
Objects of Desire - A Collection of Necessary Luxuries  
OES Alumni Board  
OES Girls' Soccer Team  
OES Student Store  
OES Summer Program  
The Old Spaghetti Factory  
The Olive Garden  
Jimm Omodt  
Oregon Ballet Theatre  
Oregon Golf Club  
Oregon Gymnastics Academy  
Oregon Mountain Community  
Oregon Shakespeare Festival  
Gary & Dana Ostenson  
Outdoor Traders  
Pacific Products  
Pacific Rim Martial Arts Academy  
Packouz Jewelers  
Paul V. Herren Catering  
Phil & Lynne Papworth  
Parr Lumber Company - Cedar Hills  
Patricia Reidel Travel  
Jane Patsis  
Pete Stone Photography

Drs. John Phillips & June Dunbar Phillips  
Lou Ann Pickering  
Pizzicato Gourmet Pizza  
Ponzi Vineyards  
Gary Pope  
Kristina Poppmeier  
Portland Baroque Orchestra  
Portland Brewing Company:  
Tony Adams  
Portland Celebrity Forum  
Portland Children's Museum  
Portland Opera  
Portland Rose Festival Association  
Portland Trailblazers  
Power Plumbing  
Eileen Preston  
The Primary Class & Rose Bardel  
Professional Travel  
Chef Gary Puetz  
Maty & Nasrin Rahatzad  
Rainbow Trout Farms  
Red Lion Hotels & Inns  
Suzanne & David Regan  
REI, Inc.  
Residence Inn by Marriott - Portland Downtown  
Chuck & Chris Reynolds  
Thea Rhiannon of Proof Positive  
Susan & Thomas Robinson  
Miriam & Harvey Rogers  
David & Lori Rogoway  
Ed & Nancy Rubovits  
Naveen & Naina Sachdev  
Salem's Enchanted Forest  
Salishan Lodge  
Trudy & John Samples  
Saturday Academy  
Saylor's, Old Country Kitchen  
Scamp's Pet Centers  
Joan Schaller  
Debby Schaffler  
Leslie & Bill Scheible  
David & Judith Schiff  
Schramsberg Vineyards  
Schwabe, Williamson & Wyatt  
Karen Seder  
Elaine Seeley  
Miles & Patsy Seeley

Rick Seifert  
Bret Sellers  
Joyce Shafer  
Rich Sherwood  
Suzette DeCoursey Shoulders  
Bev Shue  
Alice K. Simpson  
Skamania Lodge  
Skip To My Room  
Smith & Bevell Jewelers  
Barbara & Bill Spear  
Mr. & Mrs. R.E. Spiker  
Amy Spiker  
Paula Spooner  
Spring Revels Decorating Committee  
SRG Partnership P.C.  
Bonnie Stanke  
Starbuck's  
Sue Stark  
Peter & Hope Stevens  
Dale & Carol Stewart  
Linda Stewart  
Shelley Stoffer  
Todd & Carrie Stucky  
Sunshine Dairy Foods  
John & Karen Taylor  
Mr. & Mrs. T.D. Taylor  
Steve & Meri Taylor  
David, Nancy & Nicholas TenHuizen  
Tenly Care  
Tenly Properties  
Texas Beef Producers  
Ned & Anne Thanouser  
Susan Thayer  
Dawn Joy Thornton  
Timberline Lodge  
Tire Headquarters  
To Market To Market  
Matti & Majla Totonchy  
Tournament Golf Foundation, Inc.  
Traditional Thailand Massage  
U.S. Outdoor Store  
UStTravel  
Kris Van Hatcher  
Viking Industries  
Irene Vlach  
Jon & Barbara von Behren  
John & Fran von Schlegell  
Doug and Joyce Wachsmith  
Patty Walhood  
Meredith Wall  
Mary Warinner  
Jim & Syd Waskey  
Julia Weitzer  
Robin Weitzer  
West Coast Productions  
Morris & Paula Westlund  
Richard & Jana Westlund  
Whispering Woods  
Doug Whitmore  
Wild Bird Center  
Will Vinton Studios  
Mimi & Charles Williams  
Patty & Steve Williams  
Tom Willing  
Jed & Carla Wilson  
Bob & Jane Winger

Patricia & Dennis Winningstad  
Rachel & Dennis Winningstad  
Mr. Eric Wittmayer  
Virginia Euwer Wolff  
Women's Healthcare Associates, Inc.  
Mark & Leslie Workman  
Susan & Masatoshi Yamanaka  
Kelly Yustin  
Harvey & Louisa Zendt

### SENIOR GRADUATION PARTY

The All-Night Drug and Alcohol-Free Graduation Party provides a safe and enjoyable way for our graduates to celebrate this important day. Thanks to everyone whose donations, time, and work made this event a success.

Kris Gregg  
Steve Gregg  
Cindy Hoffman  
Marsha Mehr  
Shelley Stoffer  
Shirley Voelker  
Julie Drinkward  
Margaret Whang  
Suzanne James  
Jerry Pate  
Kathy Pate  
Scott Russell  
Sue Russell  
Leslie Scheible  
Sharon Chapman  
Janice Harwood  
Judy Person  
Corbet Clark  
Gary Crossman  
Christina Meyerhoff  
Karen Talus  
Patsy Seeley  
Lani Thornton  
Mary Ferguson  
Colleen Jannuzzi  
David Jannuzzi  
Brian Harwood  
Jerry de Jaeger  
Jon Harvey  
Jack O'Brien  
David Streight  
Dolores Orfanakis  
Nick Orfanakis  
Lenita Sheetz  
Noreen Reali  
Candy Snyder  
Pam Matheson  
Anne Robinson  
Chris Gregg  
Joe Graziano

## VOLUNTEERS AND SPECIAL EVENTS

### DEVELOPMENT VOLUNTEERS

The following volunteers helped with the School's development efforts over the past year. With phone calls and letters, they gave our development program a personal touch and helped raise a record \$331,340 for The OES Fund.

Tony and Margie Adams  
Carla Wilson  
Kay Brantley  
Betty Hooten  
Sally Drinkward  
Sue Stark  
Craig McClure  
Judy Lynch  
Rich Sherwood  
Chris Cooper  
Patty and Steven Williams  
Priscilla and John Longfield  
Sharon and Henry Hewitt  
Janet Maurer  
Laurie Turney  
Susan Quattrocchi  
Jana and Richard Westlund  
Kathleen Dodds and Matt Miller  
Richard Bambam  
Wendy Hamilton  
Annie English  
Linda Smith  
Jackie Lipshutz  
Kristina Fields  
Pauline Gregory  
Janet Trullinger  
Elizabeth Trainor  
Sharon Barnes  
Carrie Stucky  
Kathy Bussman  
Margaret Kushner  
Kathryn Nance  
Lee Olsen  
Dennis Winningstad  
Paul Norman  
Paul Farago and Susan Thayer  
Cheryl Carrier  
Cherie Gregg  
Elaine Johnson  
Rebecca Hencky  
Gayle Collins  
Myrtle Rae Greenwood  
Syd Waskey  
Chuck Reynolds  
Bob Winger  
Karin Randall  
Patti Knollman  
Susan Gundle

Sue Findlay  
Lynnsly Kollar  
Arlene Wittmayer  
Sue Russell  
Marilyn Lamb  
Julie Drinkward  
Deb Chessar  
Lynn Miller  
Mark Workman  
Patricia Apperson  
Norma Atkins  
Sylvia A. Boydston  
Jean Bullwinkle  
Katharine Campbell  
Dan Corona  
P. Berestford Daigle  
Marjory Day  
Daniel Diman  
Martha Dorrell  
Brent B. Erensel  
Gloria Flaherty  
Janis Grout  
Niki El Krewi  
Mary Helen Hansen  
Caroline Hargis  
Robert S. Holden  
Susan L. Howell  
Lucy Imano  
Miss Ruth Jenkins  
Katherine Karafotias  
Susie Kasper  
Paige Kuni  
Jack McCann  
Nancy Larsen  
Julie Mack  
Bill Marshall  
Martha Mason  
Marion McKean  
Mark P. Miller  
Marybeth Mitchell  
Jane Munly  
Sandy Nantt  
Margaret L. Newhall  
Amaryllis Powell  
Meridel J. Prideaux  
R.E. Clenton Richardson  
Paul R. Schlesinger  
Betsy Staples  
Kelly Dwyer  
Helen Kirschner  
Winde Strachen  
Tom Tewksbury  
Doris Trepp  
Marie-Claire Vohnson-Streight  
Virginia Euwer Wolff  
Nancy Young  
Alexandra Zimmer-Harmon  
Rhoda Zobrist  
Nancy Feldman  
Sean Kuni  
Pat Karamanos

### The Pacific Rim Advisory Council

In 1992, the Pacific Rim Advisory Council was convened for the first time by Headmaster Peter Stevens in Tokyo, Japan. In 1993, OES parents Mr. Chai and Mrs. Ing Sophonpanich graciously hosted the second gathering in Bangkok, Thailand.

Seoul Korea was the site of the 1994 meeting convened in May by OES Trustee and Pacific Rim Council Chair, Peter Bechen, and generously hosted by Dr. Jae Kyu and Mrs. Sun Park. As President of Kyungnam University in Masan, Korea and the Far Eastern Studies Institute in Seoul, Dr. Park arranged Council discussions in an international scholarly environment that was delightfully stimulating.

The purpose of the Council is to offer advice on the long term goals of the School and its role as a

Pacific Rim institution. This year, Peter Bechen and Board President Elisabeth Lyon presented the OES Master Plan, which details the siting of new and renovated facilities on the OES campus into the 21st century. Hamilton Gregg, former Director of the OES boarding program, then discussed "a day in the life of a boarding student."

Boarding is of particular interest to the Council because a number of their own children are current or recently-graduated OES students, and have come to OES from across the USA and around the world. With a growing awareness of global citizenship, the Council views the importance of the boarding component in the implementation of the School's long range plans. Upon his return to Portland, Peter Bechen reported back to the



▲ Members of the 1993-94 Pacific Rim Advisory Council, which represents OES parents, international educators, and business leaders, and whose annual meeting was held in Korea this past year.

## VOLUNTEERS AND SPECIAL EVENTS

Trustees of the discussion shared by Council members. The Trustees are very interested in having ongoing discussions in the international community.

The School expresses its grateful appreciation to those families who travelled to Seoul to enjoy friendships, discussions, and a shared vision of OES as an internationally recognized Pacific Rim institution.

Peter and Missy Bechen,  
*Portland, USA*

K.C. Chang, *Taipei, Taiwan*

Hamilton Gregg, *Portland, USA*

Peter and Elisabeth Lyon,  
*Portland, USA*

Sue and Scott Nicol, *Portland, USA*

Gun Bo and Duk Hee Park,  
*Pusan, Korea*

Jae Kyu and Sun Park, *Seoul, Korea*

Chai and Ing Sophonpanich,  
*Bangkok, Thailand*

Peter and Hope Stevens,  
*Portland, USA*

### SUMMERBRIDGE PORTLAND

Summerbridge Portland was founded in the fall of 1992 as a collaborative effort between Oregon Episcopal School and the Catlin Gabel School with the intention of preparing high-potential middle school students for success in rigorous college preparatory high school programs. The program focuses specifically on students who have had limited educational opportunities.

This year, classes began in June with a diverse group of 70 middle school students from 13 Portland public schools and 2 Catholic schools. A talented faculty of 26 high school and college students served as teachers and role models.

The academically stimulating summer sessions emphasize reading, writing, math, critical thinking, and study skills. The program also stresses leadership, heightened self-esteem, and creativity. The summer sessions are complimented by school-year tutoring, counseling, and enrichment to ensure comprehensive support.



▲ A Summerbridge student listens intently.

In addition to preparing middle school students for success in high school, Summerbridge also serves as a training ground for a new generation of teachers. For our young faculty members, Summerbridge is a total immersion into the field of education. Summerbridge Portland is modeled after the original Summerbridge program in San Francisco. At present, there are approximately thirty Summerbridge programs nationwide.

Oregon Episcopal School is grateful to the following donors for supporting this important program. And we wish to extend special recognition to the Meyer Memorial Trust for their strong support and commitment to the program.

The Catlin Gabel School  
First Interstate Bank of Oregon  
Geraldine R. Dodge Foundation  
Meyer Memorial Trust  
NIKE, Inc  
Oregon Community Foundation:  
    Summerville Fund  
    William Swindells, Sr. Memorial Fund  
    John and Jane Youell Fund  
Stoll Stoll Berne and Lokting, P.C  
Summerbridge National  
Templeton Foundation  
U.S. West Foundation of Oregon  
Viking Foundation  
Wheeler Foundation



▲ Ed Liu, co-director of Summerbridge and OES faculty member.



▲ Karen Rollins '94 was one of the 26 faculty members working with Summerbridge participants this past year.

## HERITAGE

The Heritage Society honors those who provide for OES through their estate planning. For 125 years, OES has benefitted from the long-range planning and vision of thoughtful trustees, alumni, parents, faculty, staff, and friends. The School is grateful to past and present Heritage Society members for their thoughtfulness and generosity, which is instrumental in building the OES endowment, which helps secure our future.

Anonymous  
Mr. & Mrs. Charles A. Adams  
Patricia Kendall Apperson JC '48  
Mrs. Ned Barclay Ball  
The Rev. James T. Boston  
David B. Charlton  
Mr. & Mrs. William S. Findlay  
Anna Pauley Gulley '17  
Heather (Joan Bokemeier) '74  
Bruce & Sherrie Holliday  
James D. Hutchinson  
Marion & Gordon Janney  
Miss Marian Jenkins '20  
Miss Ruth Jenkins '20  
Elizabeth Johnson '69

Henry Keller & Eola Richards Keller '12  
W.R. Lake Jr.  
Dr. Caroline Litzenberger  
Patricia J. Maulbetsch JC '41  
Louis H. Paff  
Mr. & Mrs. John W. Rath  
Elizabeth Reeves '32 & JC '35  
Mrs. Howard Sargent '35  
Lenita & Michael Scheetz  
Miss Irene Soehren  
Lee & Lani Thornton  
Mrs. J.A. Warren '33  
Betty & Jim Wright  
Mrs. Margaret Reeves Yick '30 & JC '33

OES wishes to acknowledge the thoughtful intentions of the following new member to the Heritage Society.

Mrs. Josephine de Bruin



▲ US students Ashley Berman and senior Larisa Meisenbeimer.

## PLANNED GIFTS: YOU CAN AFFORD IT!

Each day our telephone and mail bring us solicitations for donations. The volume of requests numbs our senses. Our immediate impulse is to hang up or throw it away. Yet there are causes or organizations which tug at our consciences, those we really embrace and want to support. However, the constant throb of unwanted requests creates negative conditioning. We just say "no!" or think "that's impossible!" without really examining the possibilities. In truth, there are many methods of making charitable gifts, both large and small. With a little coaching on the menu of options, the seemingly impossible can be done.

Writing a check is only one method of making a charitable gift. While simple, it is not necessarily the proper standard by which affordability should be measured if you really want to make a larger gift. The picture has to be more complete. "Non-cash"



▲ *D. Charles Mauritz is an attorney practicing with Davis Wright Tremayne, and is the father of Gwyn Mauritz Walker '87 and Britta Mauritz '94.*

assets such as securities, real estate, works of art, etc. must be included as well as income sources and needs. With these facts available, then your real financial capacity can be measured and the likely sources for making a gift can be identified.

Most larger charitable gifts from individuals are not made in cash. The tax costs and resource reduction may be simply too high to make it worthwhile. Instead, many people resort to various other devices which make use of their "hidden" financial capacity. This capacity is found in their appreciated stock or real estate which they believe should not be

sold because of the income tax consequences or because of the reduction or loss of income it produces. Charitable gifts can unlock this dormant investment and income potential without adverse consequences. In fact, income and financial security can be greatly enhanced by these efforts while creating a sizeable benefit for a charitable cause at the same time.

One of the devices commonly used to take advantage of hidden financial capacity is the Charitable Remainder Trust. It is based on a very simple premise: you transfer property to a trust, retaining an income interest for a specific term, and your charity receives the balance of assets when the term ends. The tax laws grant a very favorable status to these arrangements, and many first reactions are "it's too good to be true." On the contrary, these arrangements have been around for a long time. They have long ago passed out of the "gimmick" category and into the main stream of estate and financial planning.

The Charitable Remainder Trust begins just like all

other charitable contributions. You first make a transfer of assets. In this case, the transfer is to a trust. The trust recites all of the terms and conditions of the arrangement. It names the beneficiaries and the trustees and defines the relationships of the parties. Many of these terms are required by the tax laws in order to substantiate the charitable nature of the trust, and your entitlement to the charitable deduction.

The amount of the deduction depends on the number of variables you establish in the trust when the transfer is made. The initial variable is the income interest you retain. You must first decide how much income you want and how often it is to be paid. The income rate is expressed as an annual percentage of the value of the trust assets, i.e. 5%, 9%, etc. Income rates you received from the assets prior to transfer are irrelevant. You can set the new annual rate arbitrarily based on your expected needs. The lowest allowable rate is 5%, but there is no maximum rate. You can receive the income month-

## PLANNED GIVING

ly, quarterly, semiquarterly or annually. Generally, the charitable reduction goes down as the retained income rate and payment frequency go up.

When the income rate and payment frequency are established, you must then decide who will receive this income. The income payments can be retained for either a fixed number of years or for one or more lifetimes. For instance, you may decide to retain the income payments for a fixed period of 20 years. You may then designate yourself and several successive, alternate beneficiaries to receive it during that term, depending on who is alive at any given time. Another option is to retain the income payments for your entire lifetime. You can also extend the term to include the lifetime of your spouse or of a child or children. Again, the charitable deduction decreases as the length of the retained income term increases (either expressed as a fixed number of years or through the duration of one or more lifetimes).

The last significant variable is the form in which the income payments are determined. You may elect to fix the amount you receive when the initial transfer is made. The same payment amount will then be paid to you throughout the term of the trust. This is an "annuity" trust. The income payment is not affected by subsequent changes in the value of the trust fund. The second format is a variable payment amount. The same income percentage rate is used throughout the term, but the assets of the trust are re-valued at the beginning of each year and the rate applied to the new value. Thus the payment amount will fluctuate with the market and value of the trust assets. This is a "uni-trust." Generally, the deduction is higher for an annuity trust than a uni-trust.

When these variables are established, the charitable deduction can be calculated. This deduction is one of the twin keys the Charitable Remainder Trust utilizes to release dormant investment and income potential. The assets you transfer to the trust are only used to measure the

charitable deduction. They are not necessarily the source of the income interest you retain. Most often, the assets you transfer to the trust are sold. The proceeds are then reinvested more appropriately to produce the income payments to you. The sale may create a gain, but there is not tax because the law attributes the gain to the "tax-exempt" charitable beneficiary, not to you. Thus a principal motivation for creating a Charitable Remainder Trust is to completely escape the tax cost of changing your investments. The trust is the key to a tax-free conversion of low or no income assets into higher income assets or of a single asset into a diversified portfolio of assets.

The second key to release dormant investment and income potential is the charitable deduction itself. The gain on the sale of the assets you transfer to the trust is not taxable, but the income interest you retain is taxable as you receive it over the term of the trust. The charitable deduction is used to offset the tax consequences of these income payments. It can also offset

other income sources you have, too, if the deduction is large enough. The charitable deduction thus creates tax-free income where none existed before.

The amount of the deduction is calculated using actuarial tables furnished by the IRS. As noted above, the deduction amount is directly affected by the characteristics you choose for the retained income interest.

Sometimes, the deduction amount is the principal focus in selecting these variables, whereas other situations attribute less significance to the deduction and concentrate on maximizing personal income security. In either case, the amount of charitable deduction which may be used to offset your taxable income is limited to the percentage of your "adjusted gross income." Most commonly, this limit is 20% of adjusted gross income. It is not unusual for the total deduction to exceed this limit. In that case, the tax law allows you to "carry forward" the excess deduction and apply it against your tax-

## PLANNED GIVING

able income in the next five years. For example, if your total charitable deduction is \$10,000 and 20% of your adjusted gross income is \$4,000, then you can only use \$4,000 of the deduction this year, but the remaining \$6,000 of the deduction is still available for use in the next succeeding five years to offset taxable income within the 20% limitation.

The financial aspects of the Charitable Remainder Trust reflect your choices in the variables affecting the income interest you retain. Once fixed, these issues are rarely confronted again. On the other hand, the Charitable Remainder Trust is not something you sign and forget. It is, after all, still a trust. It must have a trustee to supervise and execute its affairs. There are many applicable rules and regulations governing the trust administration, but substantial flexibility also exists. Many people turn to their professional advisors to act as trustees, such as banks, accountants and attorneys. Some charitable organizations will even act as trustees of trusts for which they are

at least partially the eventual beneficiary. Community foundations (i.e., the Oregon Community Foundation) make it their business to act as trustees and fund managers for these trusts. Within certain special limitations in place, you can act as your own trustee, too.

The duties of the trustee are not insignificant. They include the proper investment of the funds and the payment of the income interest to you. Annual tax returns and information reports must be prepared and filed. The fees and costs of the trustee or financial management services may be an issue to some people, and each of the alternatives will present different services and efficiencies. The final choice is important since the long term performance of the trust directly affects the ultimate benefit received by the charity. Prudence and experience are key elements in the selection criteria.

The last variable is probably the one that truly provides the impetus for the whole arrangement. That is the identity of the charitable beneficiary or beneficiaries. Many trusts are

created with specific beneficiaries in mind, but circumstances change. A Charitable Remainder Trust is by its very nature a long term plan. In response to inevitable change, the tax laws permit you to retain the right to change the charitable beneficiary if you choose. So long as all the beneficiaries at all times are qualified charitable institutions, you can make as many changes as you wish. Only the list in effect at the conclusion of the trust term determines which charities actually receive the remaining trust assets.

The income interest characteristics and management choices cover quite a broad spectrum of variables. Only one attribute is ironclad from the inception of the trust. A Charitable Remainder Trust is irrevocable. This means the arrangement is permanent until its course is fully completed. The characteristics of the income interest cannot be changed. The distribution of the balance of the assets to charities at the conclusion of the trust term cannot be changed. Areas of flexibility do exist, but second thoughts after the trust is in place cannot alter the

trust or the ultimate fulfillment of its purpose.

Many details are involved in the decision to pursue a larger charitable gift. The first rule is the most obvious, but also the most difficult: take off the blinders. They only confine your vision of the available resources for a gift. The second rule is equally compelling: consult competent professionals. They are the only ones who can give you a complete explanation of all the options open to you and the many variables affecting each one. No description of planned charitable giving alternatives is complete without a thorough review of a Charitable Remainder Trust. It can provide the means to make a substantial charitable gift. In fact, it can actually increase your income and strengthen your portfolio by diversifying your investments. Happily, the tax laws promote rather than discourage these positive results, and the investment transition is tax-free. With these kinds of benefits potentially available, the issue is not whether to do it, rather how you can afford not to do it!

# THE CLASS OF 1994



▲ Shannon Hiller-Webb, Tracy Sheetz and Wendy Siemens gather for a photograph before processing into Trinity for the 1994 commencement.

## College Plans

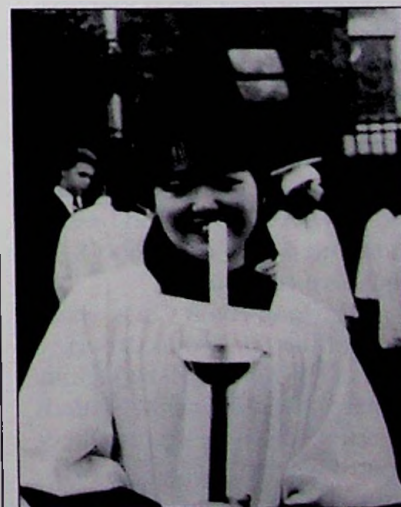
- Katie Adams**  
Tulane University
- Joanne Bennington**  
Rhodes College
- Jeff Chang**  
University of Southern California
- Lillian Choi**  
Claremont McKenna
- Todd Crawford**  
Carleton
- Michele Duncan**  
University of Puget Sound
- Elena Egorova**  
Claremont McKenna
- Rachel Frank**  
Brown University
- Kyle Freres**  
Southern Methodist University
- Tyler Freres**  
Southern Methodist University
- Eric Gebbie**  
University of St. Andrews (Scotland)
- Alex Guerrero**  
Portland State University
- Paul Hearn**  
Lawrence University
- Martin Hellhake**  
University of San Francisco

- Jimmy Herman**  
University of California, Los Angeles
- Shannon Hiller-Webb**  
Lewis & Clark College
- Takashi Ike**  
Washington State University
- Michael Kremkau**  
Colorado College
- Scott Kremkau**  
University of Redlands
- Ted Laderas**  
Whitman College
- Heather Laird**  
Stanford University
- Jo-Anne Landry**  
Boston College\*
- Heather Licini**  
University of Colorado, Boulder
- Brian Lin**  
Boston University
- Joe Matheson**  
University of San Francisco\*
- Britta Mauritz**  
Gettysburg College
- Toby Menely**  
Beloit College
- Chris Michlig**  
University of Oregon
- Josh Michtom**  
New York University
- Heather Moreland**  
Whitman College
- Ken Moriyasu**  
University of Oregon
- David Moser**  
Seattle University
- Berk Ongan**  
University of Oregon
- Heather Patsis**  
Villanova University
- Ben Pope**  
Lane Community College
- Damien Ritter**  
University of San Francisco

- Karen Rollins**  
Wellesley College
- Tracy Sheetz**  
University of Oregon
- Wendy Siemens**  
University of Montana
- Aaron Smith**  
Portland State University
- Margaret Spring**  
Northwestern University
- David Stanke**  
Brown University
- Mikael Sterner**  
University of Oregon
- Jennifer Thomas**  
University of Oregon
- Kirsten Winchell**  
University of Oregon
- Adam Woodward**  
University of Southern California
- Retan Wulandari**  
Carnegie Mellon University



▲ Graduates Tyler Freres, Toby Menely, David Moser and Martin Hellhake on the big day.



▲ Yumi Hattori was an acolyte at the 1994 commencement.

\* Will defer



▲ OES sixth graders hold class on a section of the proposed site for the new, upgraded Middle School.

## *The New Middle School: Now All We Need Are the Walls!*

For 125 years, thousands of individuals have been touched by their educational experiences at St. Helens Hall, Bishop Dagwell Hall, and Oregon Episcopal School. Not only students, but parents, teachers, staff, alumni, grandparents, and friends have grown and been nurtured within the School's inclusive community.

Mr. Jong-Hyon Chey, chairman of the Sunkyoung Group, one of the five largest conglomerates in Korea, recently stated in reference to the future direction of his own business: "We are not awaiting the 21st century, we intend to shape it." How perfectly applicable this statement is to the implementation process of the OES Long Range Plan for the 21st Century, which

is appropriately called OES/21.

The OES Statement of Purpose articulates both the School that we are and the School we are becoming, and OES/21 details the essence of what we seek to accomplish to shape our institution for the 21st century. Like Mr. Chey, the OES Board of Trustees realizes the prudence of its charge for long-range planning and articulated goals.

Wise and careful trustee management during the past decade has allowed the School to achieve financial solidity with no external debt, a well-managed plant with provisions for deferred maintenance, and an enrollment that is both the largest in the School's history (with plentiful wait pools in each division) and the earlier-than-expected realization of our student population goal outlined in OES/21.

Our moment is at hand. We have implemented many of the components of the Long Range Plan, ranging from a growing endowment for faculty professional growth and development to technology components that

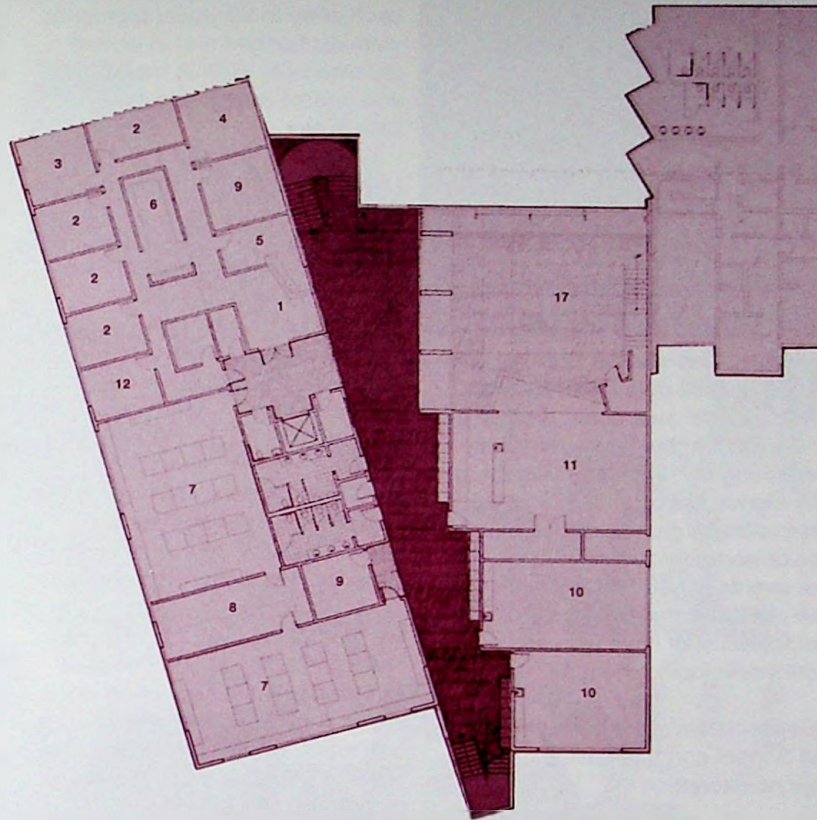
include laptop computers for each third, fourth, and fifth grader, and laptop PC's for all sixth graders beginning in the fall of 1995.

We are now ready to launch the most energetic campus facilities upgrade ever seen in the 125-year-history of the School. The Trustees and Middle School faculty have worked together with the OES Design Review Committee over the past year to develop a facility that meets the programmatic requirements of the Middle School.

The proposed new Middle School building will secure an academically excellent environment for all our current students as well as the thousands of students who follow them into the 21st century. We have a superb Middle School program that is a model of what a truly excellent Middle School should be, and it is racing towards the 21st century! All that is missing is the building that will fulfill the space and programmatic needs of the children who learn within its walls. We need you to help us build it!

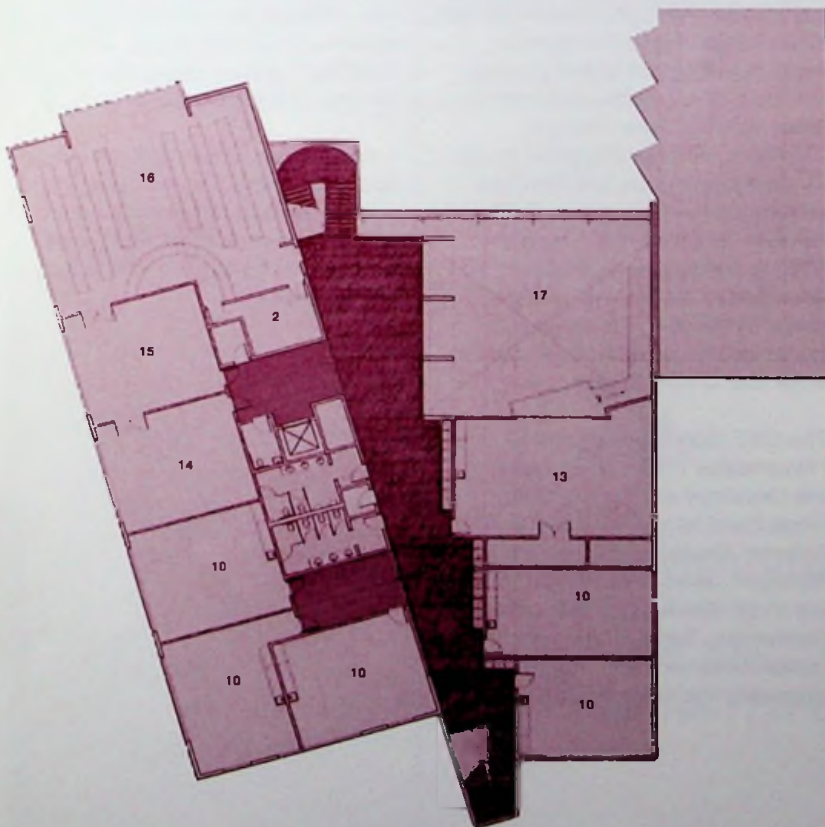
# A S T E R P L A N

AUTUMN  
1 9 9 4



- LEGEND**
- 1 Reception
  - 2 Office
  - 3 Faculty Lounge
  - 4 Conference
  - 5 Middle School Head
  - 6 Work Area
  - 7 Laboratory
  - 8 Prep/Storage
  - 9 Counseling
  - 10 Classroom
  - 11 Drama
  - 12 School Nurse
  - 17 Commons

*The proposed main level of the new Middle School*



- LEGEND**
- 2 Office
  - 4 Conference
  - 10 Classroom
  - 13 Projects
  - 14 Computer Lab
  - 15 Publishing Center
  - 16 Library
  - 17 Commons

*The proposed upper level of the new Middle School*

OREGON  
EPISCOPAL  
SCHOOL

## Alumni Association President's Corner



▲ Liza Lilley '74

**U**e celebrate the 125th year of OES during the 1994-95 school year and it promises to be memorable. I feel very lucky beginning my term as President of the Alumni Association during such an exciting time. I hope you have the opportunity to attend some of the events scheduled throughout the year. Many volunteers and dedicated staff have worked long hours developing them.

Summer is always a busy time at the School and this past summer was no exception.

The Alumni Association welcomed its newest members at the Senior Reception held on June 9. The Class of 1994 added 47 members to our ranks, which total approximately 1,800. At the reception I was pleased to introduce Jo-Anne Landry as the 1994 Class Agent. Jo-Anne, who is studying in England this fall, will act as liaison between the School and her classmates.

Class reunions are held each June and this year we celebrated the classes ending in "4" and "9".

I had the opportunity to attend the 1944 St. Helens Hall and SHH Junior College class luncheon. Some classmates had not seen each other in 50 years! Memories were exchanged and everyone did their best to fill in the gaps and update others on events in their lives.

I was touched by the stories about World War II, in particular D-Day, which occurred close to their graduation. One alumna remembers how calmly Bishop Dagwell announced the invasion and how he allayed their fears. Another classmate told of her fiancée who lost his life landing off Holland that same summer.

Most recollections, however, were met with laughter and smiles. I hope in another 30 years my 50th class reunion is just as memorable.

My graduating class of 1974 celebrated its 20th reunion this past summer. Eighteen out of 36 classmates were able to attend at least one event. Brent Erensel and Max Miller Jr. deserve much thanks for organizing the gathering.

Our reunion was that much more joyful with the recent news that our classmates, Tanja Vaseljevic Horvat, was granted entry to the United States. Tanja, a citizen of Saravejo, had been living in Germany with her daughter Ivana since escaping the war that has destroyed her homeland. OES offered Tanja, who is a trained doctor, the position of laboratory assistant in the science department. Without a job, Tanja and Ivana would not have been able to enter the United States.

The OES Board of Directors, Headmaster Peter W. Stevens, the Development Office, the Rosenlund family, Max Miller Jr., Autumn Alexander-Skeen, John Wysham, Jenny Holden and others are to be thanked for their efforts concerning Tanja. Their concern, humanitarianism and actions exemplify the spirit of OES.

This fall and winter also promise to be busy. Many activities are scheduled to celebrate the 125th. An example is the Alumni Lecture Series, which runs throughout the school year in conjunction with the programs of the OES Parent Education Committee. Guest speakers from our alumni ranks are scheduled to speak on a variety of topics.

The Alumni Association extends a special invitation to all alumni, parents and friends of OES to attend the 1994 Founders Day Anniversary Gala. This year we honor Betsy Johnson, Class of 1969, with the Distinguished Alumni Award named in honor of the founder of St. Helens Hall in 1869, Bishop Benjamin Wistar Morris. The award will be presented during the Founders' Day Gala. Chet Orloff, Executive Director of the Oregon Historical Society will be our guest speaker and Gerry Frank will be our Master of Ceremonies. It promises to be an entertaining evening.

Another anniversary event will be the appearance of actress and UNICEF Goodwill Ambassador Liv Ullmann, on December 8. Ms. Ullmann will speak on "Making the World A Better Place for Our Children," a very appropriate topic for the OES community.

I am excited about this anniversary and I hope you are too! As always, your ideas and comments about how the Alumni Association can best serve the alumni community are welcome.

# THE OES STUDENT STORE



▲ OES students and their families love the new Student Store! Pictured here are some of the happy shoppers: Jana Westlund and her children, John, David, and Lauren; Jennifer, Christina, and Elizabeth Workman; Ian Rogers and Michael Gundle.

*From Blankets to Windssocks  
We Have What You Need*



Store Hours: Monday, Wednesday and Friday  
7:30 - 9:30 a.m.  
2:00 - 3:30 p.m.

Telephone: (503) 246-7771 ext. 170



▲ *The entire student body, faculty, and staff of St. Helens Hall gather in front of the School in 1890, the last year spent at the original site where Portland's City Hall now stands. The founder of the School, Bishop Benjamin Wistar Morris, and his sisters Mary, Lydia and Clementine Rodney are in the center.*

## I N S I D E !

Opening Day Kicks Off  
the 125th!.....4

### A HISTORICAL VIEW OF OREGON EPISCOPAL SCHOOL

<i>Academics and Educators</i> .....	8
<i>Spiritual Traditions</i> .....	12
<i>Extracurricular Antics and Activities</i> .....	14
<i>Lasting Alliances</i> .....	18
<i>Boarding Life</i> .....	22

125 Years of Loyalty:  
The Reynolds Family.....26

The Mustard Seed  
Annual Report of Giving.....29

Planned Gifts: You Can Afford It!...56

*Now All We Need Are the Walls!*  
The Master Plan and  
the New Middle School.....60

President's Corner.....62

THE  
OES  
**Beltower**

OREGON EPISCOPAL SCHOOL  
6300 S.W. Nicol Road  
Portland, Oregon 97223-7566

ADDRESS CORRECTION REQUESTED

Non-Profit  
Organization  
U.S. Postage  
**PAID**  
Permit No. 334  
Portland, OR