

ST. HELEN'S HALL

PORTLAND, OREGON

Resident and Day School for Girls

UNDER THE AUSPICES OF

THE EPISCOPAL CHURCH

IN THE DIOCESE OF OREGON



FORTY-FOURTH YEAR



"That our daughters may be as the polished corners of the temple"



"Education is the end to be attained. Instruction is one of the means. Instruction provides the mind with the knowledge of certain things; Education forms at the same time the understanding, the heart, the character and the conscience."

FELIX DUPANLOUP.

•

Board of Trustees of St. Helen's Hall



THE RT. REV. CHARLES SCADDING, D.D., BISHOP OF OREGON, *Chairman*

THE REV. A. A. MORRISON, PH. D.

JOHN KOLLOCK

THE REV. JOHN DAWSON.

H. B. LEONARD.

THE REV. H. D. CHAMBERS.

C. B. PFAHLER.

JOHN KOLLOCK, *Secretary*



SAINT HELEN'S HALL was established by the Rt. Rev. B. Wistar Morris, D. D., and opened September, 1869, with Miss Mary B. Rodney as Principal. The ground upon which the school was first built was secured through the liberality of Mr. John D. Wolfe and his daughter, Miss Catharine Wolfe, of New York City, whose large hearted generosity should ever be remembered in recalling the early history of this institution. The school continued its work in the original building on Fourth Street, between Madison and Jefferson, until the year 1890, when the property was sold to the City of Portland, for the use of the City Hall. On the 9th of June of that year, the corner stone of the present large and commodious building was laid, and on the 24th of February, 1891, the school was moved to its new home.

Miss Mary Rodney died April 15th, 1896, and the work was carried on by her sisters the Misses Rodney until the close of the school year. At the opening of the next year, Miss Eleanor Tebbetts, Ph. D., became principal and remained in that office till the end of June, 1904.

By request of the Board of Trustees, the Sisters of St. John Baptist (founded at Clewer, England, in 1851, and affiliated in this country in 1881) then undertook the charge of the school and trust that God will continue to bless their endeavors for its prosperity and increased usefulness.

Officers and Instructors

1911-1912 - 13



THE RIGHT REVEREND CHARLES SCADDING, D. D., BISHOP OF OREGON
Rector

THE REV. W. A. M. BRECK
Chaplain

THE SISTERS OF ST. JOHN BAPTIST
General Superintendence, Holy Scripture, Church History

Miss Grace A. Pierce
(Wellesley College)
GREEK AND LATIN

Miss Josephine Emerson
(Smith College)
MATHEMATICS

Miss Dorothy Hazeltine.
(Wellesley College)
ENGLISH AND HISTORY.

Miss Laura G. Eaton
(Cheltenham Ladies' College)
(University of London)
ENGLISH AND HISTORY.

Miss Iva Lee
(Posse Gymnasium)
PHYSICAL CULTURE

Madame Rosset de Cambremont,
Diplomee
FRENCH

Miss Evangeline Breck
FRENCH

Madame Anna Jacques
GERMAN

Miss Madeleine Raby
(National School of Elocution and Oratory,
Philadelphia)
ELOCUTION

Miss Ethel Abbott

(Pupil of Ernest Hutcheson)
(Peabody Conservatory)

PIANO

Miss Minnie Rea

(Pupil of Richard Burmeister, Berlin)

PIANO

Miss Helene Schumacher

(New England Conservatory)

VOCAL MUSIC

Miss Ellen Ravenscroft

(Chase School of Art, New York)

ART

Miss Dora Allen Reid

(Smith College)

ELEMENTARY DEPARTMENT

Miss Helen Wells

ELEMENTARY DEPARTMENT

Miss Nellie Lathrop

ELEMENTARY DEPARTMENT

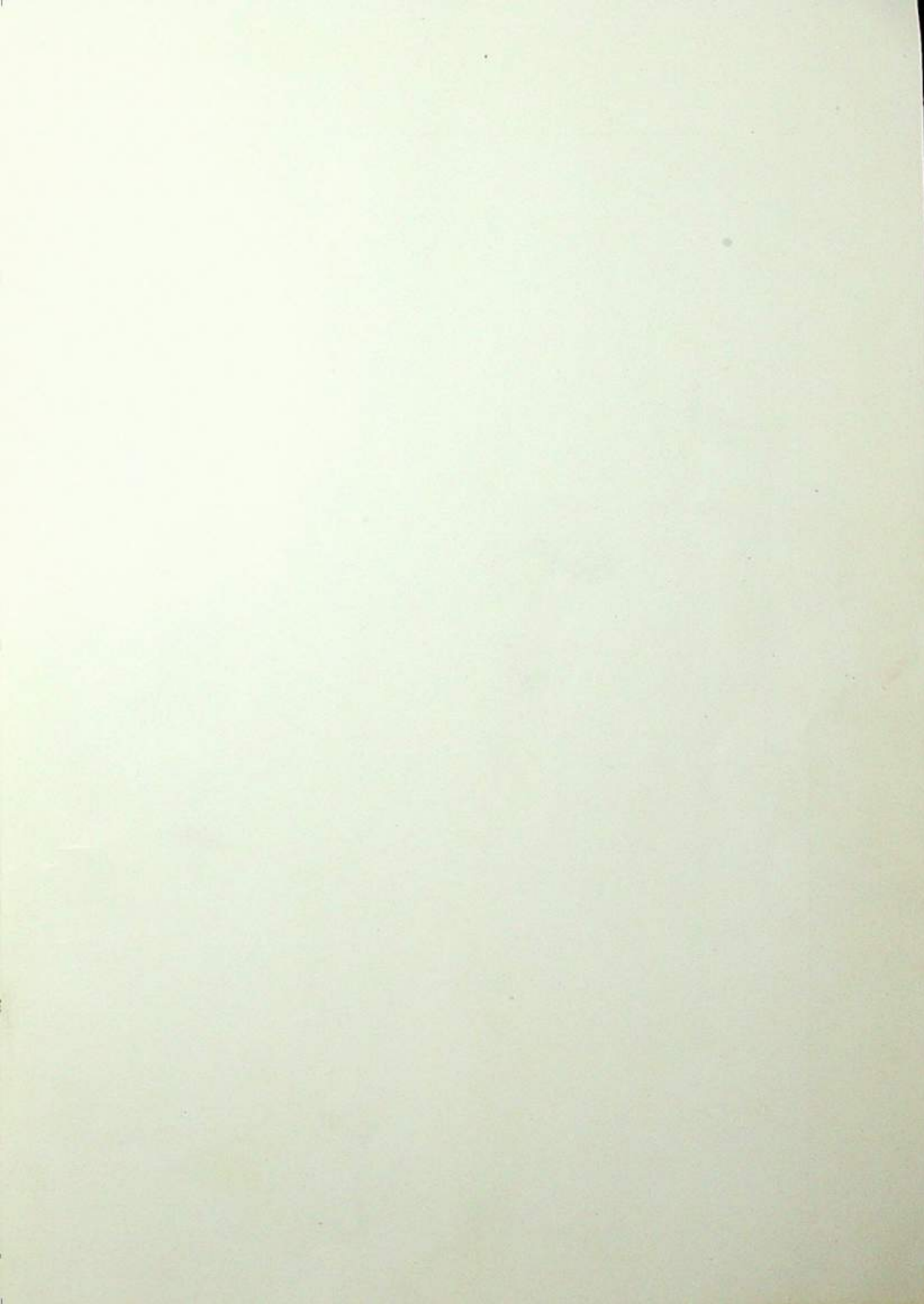
Miss Helen Gannett

ELEMENTARY DEPARTMENT

Calendar

1912-1913

- June 1, 1912. Reunion of Alumnae.
June 9, 1912. Baccalaureate Sunday.
June 10, 1912. Commencement.
Sept. 16, 1913. Forty-fourth year begins.
Nov. 28, 1912. Thanksgiving Day.
Dec. 20, 1912. Christmas Vacation begins—3 p. m.
Jan. 6, 1913. Christmas Vacation ends—9 a. m.
Feb. 22, 1913. Washington's Birthday.
Mch. 21, 1913. Good Friday.
Mch. 23, 1913. Easter Day.
Mch. 28, 1913. Easter Vacation begins—3 p. m.
April 7, 1913. Easter Vacation ends—9 a. m.
May 30, 1913. Memorial Day.
June 11, 1913. Commencement.





STUDIO



GYMNASIUM

The School

The aim of St. Helen's Hall is to provide for girls the best possible facilities for complete education. This means not only the cultivation of the intellect and the acquirement of graceful womanly accomplishments but also such moral and religious training as shall help the pupils to become pure, true women, with a high positive standard of Christian living.

No school could have a more beautiful location. The building, a handsome brick structure, is on a height overlooking the city, and surrounded by lines of soft blue hills broken by the snowy peaks of Mt. Hood and Mt. St. Helens and the distant white crest of the Cascades. It is thoroughly heated by hot water circulation, and well ventilated. There are two stairways from the third floor, and fire escapes. The Chief of the Portland Fire Department has the supervision of all the provisions for safety in case of fire, and inspects the fire escapes from time to time. The plumbing is under the care of one of the best sanitary plumbers in the city.

The interior administration of the school has been entrusted to the Sisters of St. John Baptist, who have the general superintendence of every department. In secular studies they are assisted by a staff of efficient instructors, either college graduates or especially trained for their work.

A daily record is kept of the attendance, scholarship and deportment of every pupil, and a report of the same is mailed to parents quarterly.

Pupils failing, after a fair trial, to attain the required standard of scholarship or deportment, will not be retained in the school.

The Sister Superior will always be glad to receive visits from the parents of pupils; her regular reception hours are 2 to 4 p. m. on all school days, also 5 to 8 p. m. on Mondays.

The school consists of three departments—**Elementary, Academic and Collegiate**; and the special departments of Music, Art and Elocution.

The **Elementary Department** is divided into seven classes covering in English and Arithmetic the same ground as the Elementary public school but including a broader range of subjects.

The **Academic** department covers five years and is divided into two courses, the College Preparatory Course and the General Course. The College Preparatory Course is so arranged as to meet the requirements of the leading Eastern colleges without undue pressure.

The General Course is intended for pupils desiring to lay the foundation of a broad general education, and meets the requirements of those universities and colleges which do not require four years' preparatory work in Latin. In its time, which in the College Preparatory Course is necessarily spent in Latin, is devoted to Literature, History and Modern Languages. Much of the work is common to both courses, and the standard of thoroughness is the same.

The certificate of St. Helen's Hall is accepted instead of entrance examinations at Wellesley and Vassar Colleges, also at the State Universities of Oregon and Washington.

Music, Art and Elocution count as regular elective studies in the General Course. Either Course satisfactorily completed entitles a pupil to the diploma of the school.

In both courses twenty credits are required for graduation, each credit representing a year's work of five recitations a week. Twenty recitations a week are required of all pupils not studying Music or Art, fifteen recitations a week are required of Music and Art pupils.

The Collegiate Department.

St. Helen's Hall offers two years' advanced work in Languages, Mathematics, History and Literature, equivalent to the work of the first two years in college.

At the completion of a two years' course of collegiate work, amounting to nine credits, a certificate will be given.

English.

The aim in this course is to give pupils thorough instruction in English Grammar and Rhetoric, to enable them to write with ease and accuracy, and to teach them to appreciate what is best in English Literature. From the lowest class the reading matter is carefully selected, and in the third year of the Academic Course a brief history of English Literature is studied. After this the work consists chiefly in the writing of compositions and the critical study of English masterpieces, especially those required for College entrance examinations. Especial effort is made to form a taste for good literature, and courses of reading are planned for the summer vacation.

French and German.

In these courses the aim is to enable the pupil to read the languages at sight and speak and write them easily.

In order to acquire a good pronunciation the study of French should be begun in the Elementary Department, the lessons at first being in the form of conversation and easy

reading. Afterward grammar and translation are begun. In the last year of the Course, French composition, History and Literature are studied, and French is the language of the class room.

German may be begun in the first or second year of the Academic Course and carried to the point required for admission to college or beyond it as may be desired. Attention is paid to pronunciation, conversation and sight reading, as well as to grammar and translation. In the case of resident pupils the French table offers additional opportunities for conversation. The German Choral class meets the first Thursday in each month. Folk songs are sung, and the advanced German pupils tell the story of the songs. The German Literature Club meets once in each month for the study and discussion of great masterpieces.

Latin and Greek

"Latin and Greek are not regarded as dead languages except in the sense that all language of books not in our era is dead. They are living in the sense that the English of Chaucer and the Italian of Dante are alive, dead only to those to whom for lack of knowledge they are sealed books." (Cambridge School Manual.)

A five years' course of Latin is provided, including beside the usual college requirements of Cæsar (four books), Cicero (six orations), Vergil (six books), and Prose compositions, selections from Sallust and Ovid and much sight reading. By beginning Latin early in the course the sense of hurry and strain is avoided and there is time enough to make the study interesting and delightful as all true intellectual work ought to be.

The course in Greek covers three years; the previous work in Latin having prepared the pupil for its intelligent study. The first year is given to grammar and exercises, the second to Xenophon, the third to Homer. It is desirable though not essential, that pupils preparing for college should elect Greek as their third language.

History

The study of History is begun in the Elementary Department and continued to the end of the school course. In the College Preparatory Course it is necessarily limited to college requirements, which, however, are constantly increasing both as to quantity and quality. In the General Course three courses of History are provided. The topical method is approved, collateral reading is encouraged. Maps are drawn, and historical geography is held to be an important part of the work. History and English are intimately associated; pupils being required to commit to memory historical poems, and to write compositions on subjects drawn from historical lessons. The school is fortunate in possessing a fairly good though small library of history and literature bearing upon it.

Mathematics

"In teaching mathematics the aim is to develop the spirit of enquiry, the habit of accuracy in reasoning, and the love of truth." (Cambridge School Manual.)

The prescribed course comprises Arithmetic, Algebra, Plane and Solid Geometry.

Throughout the course original work is encouraged, and set rules are avoided. The pupils are encouraged to rely as little as possible upon text books.

Science

This department is conducted in accordance with the best scientific methods. Natural History is taught in connection with Geography in the Elementary Department. In the Academic Department the subjects are taken up as indicated in the course of study. Laboratory work is required of all students of Chemistry and Physics, and the use of the microscope of all students of Botany and Physiology. It is considered that one or two sciences each thoroughly studied for not less than one year will do more for the pupil's intellectual development than a large amount of superficial work.

Physical Culture

St. Helen's Hall has a large gymnasium, and a trained teacher is in charge of the gymnasium work. In the Elementary Department there are easy drills several times in the week. In the Academic department each class has two morning periods a week for light work such as marching, club swinging, folk dances, etc., and every pupil is required to be in one afternoon class for either æsthetic dancing, apparatus work or games. An exhibition to which the parents and other friends are invited, is held every spring, at the conclusion of the year's work.

Religious Instruction

All pupils receive instruction in Holy Scripture, Church Catechism and the History of the Church, and attend the daily services in the Chapel of the School. Resident pupils attend service on Sunday morning in one of the city churches.

Special Students

Special students in Music, Art or Elocution may be received as resident, when there is room for them, but the preference will be given to pupils in the regular course. No one will be received as a special student without having first completed a high school course of study or its equivalent. The terms for special students are the same as for regular students.

Course of Study

Elementary Department

FIRST YEAR.

ENGLISH. Reading, Writing, Spelling, Language Lessons, Art-Literature Primer. Folk Lore Primer. Folk Lore First Reader. Art Literature First Reader. Sherman's "Little Folk Lyrics." Bass' Nature Stories.

ARITHMETIC. Combinations to 20. *book*

FRENCH. Conversation.

SECOND YEAR.

ENGLISH. Reading, Writing, Spelling, Language Lessons. Folk Lore Second Reader. Art-Literature Second Reader. McMurry's "Robinson Crusoe."

ARITHMETIC. Nichol's—Book I.

GEOGRAPHY. Sand maps. Pictures and stories of different lands.

FRENCH. Conversation.

THIRD YEAR.

ENGLISH. Reading, Writing, Spelling. Kittredge and Arnold's Mother Tongue, Book I. Art Literature, Third Reader. Cyr's Third Reader. Stevenson's Child's Garden of Verse. Eggleston's "Stories of American Life and Adventure." Carrol's "Alice in Wonderland." Selections.

ARITHMETIC. D. E. Smith's Primary Arithmetic.

GEOGRAPHY. Sand Maps. Map Drawing. Geographical Reader.

FRENCH. Conversation and Reading.

FOURTH YEAR.

ENGLISH. Reading, Writing, Spelling. Kittredge and Arnold's Mother Tongue—Book I. Cyr's Fourth Reader. Longman's Fourth Reader. Kingsley's "Waterbabies." Ruskin's "King of the Golden River." Whittier's Child Life.

ARITHMETIC. Smith's Primary Arithmetic.

GEOGRAPHY. Tarr and McMurry. Leete's Exercises.

HISTORY. Stories from English History.

FRENCH. Conversation and Reading.

FIFTH YEAR.

ENGLISH. Reading, Writing, Spelling, Elocution. The Mother Tongue—Book II. Hawthorne's Wonderbook and Tanglewood Tales. Whittier's Child Life. Church's Story of the Iliad. Selections from Longfellow, Scott, Tennyson, etc.

ARITHMETIC. Smith's Grammar School Arithmetic.

GEOGRAPHY. Tarr and McMurry. Leete's Exercises.

HISTORY. American History. Stories from Ancient History.

FRENCH. Grammar and Reading.

SIXTH YEAR.

ENGLISH. Reading, Writing, Spelling, Elocution. The Mother Tongue—Book II. Irving's "Sketch Book." Hawthorne's "Twice Told Tales." Burrough's "Birds and Bees and Sharp Eyes." Lang's Blue Poetry Book. Selections.

ARITHMETIC. Smith's Grammar School Arithmetic.

GEOGRAPHY. Tarr and McMurry. Leete's Exercises.

HISTORY. American History. Stories from Modern History.

FRENCH. Grammar and Reading.

SEVENTH YEAR.

ENGLISH. Whitney and Lockwood's Grammar, Elocution.

ARITHMETIC. General Review. Metric System.

SCIENCE. Physical Geography.

HISTORY. English History.

FRENCH. Grammar and Reading or German or Latin begun.

IN ALL GRADES. Physical Culture, Sight Singing, Drawing, Painting, Needlework, Nature Study, Bible History, Church History, Catechism.

While a seven years' course of study is provided, there may be special cases in which a child may accomplish the required work in six years. On the other hand, it may more frequently occur that a slow or delicate child will need eight or nine years to cover the same ground. In every case the course must be fitted to the pupil, not the pupil to the course. No pupil may be promoted to the Academic Department without thoroughly accomplishing the required elementary work.

Academic Department

College Preparatory Course.

FIRST YEAR.

WEEKLY PERIODS.

Required Studies—

ENGLISH. Grammar, Composition, Reading.	5
LATIN. D'Ooge's First Book	5
FRENCH. Squair and Fraser's Grammar, Contes et Legendes, Sans Famille.	5
MATHEMATICS. Algebra—Slaughter and Lennes.	5
SACRED STUDIES. Bible History.	2
	22

SECOND YEAR.

Required Studies—

ENGLISH. Rhetoric, Composition, English Literature.	5
LATIN. Cæsar, Nepos, Grammar, Prose Composition.	5
FRENCH. Squair and Fraser's Grammar, La Cigale chez les Fourmis. Mon Oncle et Mon Cure.	5
MATHEMATICS. Algebra—C. Smith. Plane Geometry.	5
SACRED STUDIES. Old Testament History.	2
	22

General Course.

FIRST YEAR.

WEEKLY PERIODS.

Required Studies—

ENGLISH. As in College Preparatory Course.	5
HISTORY. English and American, or	5
FRENCH. As in College Preparatory Course.	5
MATHEMATICS. As in College Preparatory Course.	5
SACRED STUDIES. As in College Preparatory Course. And one Elective.	2
<i>Elective Studies—</i>	
? ELOCUTION.	2
? MUSIC.	2
? ART.	2
	19

SECOND YEAR.

Required Studies—

ENGLISH. As in College Preparatory Course.	5
FRENCH. As in College Preparatory Course.	5
MATHEMATICS. As in College Preparatory Course.	5
SACRED STUDIES. Old Testament History. And one or two Electives.	2
<i>Elective Studies—</i>	
GERMAN. Grammar, Reading.	4
ELOCUTION.	2
MUSIC.	2
ART.	2
	19 to 21

Academic Department.

College Preparatory Course.

THIRD YEAR.

WEEKLY PERIODS.

Required Studies—

ENGLISH. History of Literature. Composition, Study of English Authors.	5
LATIN. Cicero, Prose Composition.	5
MATHEMATICS. Plane and Solid Geometry.	5
SACRED STUDIES. New Testament History. And one Elective.	2

Elective Studies—

FRENCH. Grammar, Scenes de la Revolution Française, La Canne de Jong, Composition.	5
GREEK. Grammar, Reading	5
GERMAN. Grammar, Guerber No. 1 and 2.	4

21 to 22

FOURTH YEAR.

WEEKLY PERIODS.

Required Studies—

LATIN. Ovid, Vergil, Prose.	5
HISTORY. Greece and Rome.	5
SACRED STUDIES. Church History. And one or two Electives.	2

Elective Studies—

FRENCH. Composition, Mademoiselle de La Seigliere, La Bataille des Dames.	5
GREEK. Xenophon, Prose Composition.	5
GERMAN. Grammar, Imensee, Der Zerbrochene Krug, Minna Von Barnhelm.	4
SCIENCE. Botany or Physics.	5

17 to 22

General Course.

THIRD YEAR.

WEEKLY PERIODS.

Required Studies—

ENGLISH. As in College Preparatory Course.	5
FRENCH. As in College Preparatory Course.	5
MATHEMATICS. Plane and Solid Geometry.	5
SACRED STUDIES. New Testament History. And one or two Electives.	2

Elective Studies—

GERMAN.	4
ELOCUTION.	2
MUSIC.	2
ART.	2

19 to 21

FOURTH YEAR.

WEEKLY PERIODS.

Required Studies—

ENGLISH. Study of English Authors, Composition.	5
FRENCH. As in College Preparatory Course.	5
HISTORY. Greece and Rome.	5
SACRED STUDIES. Church History. And one Elective.	2

Elective Studies—

SCIENCE. BOTANY. PHYSIOLOGY.	5
GERMAN. Grammar, Translation.	4
ELOCUTION.	2
MUSIC.	2
ART.	2

19 to 22

Academic Department.

College Preparatory Course.

FIFTH YEAR.

WEEKLY PERIODS.

<i>Required Studies—</i>	
ENGLISH. Study of English Authors. Composition.	5
MATHEMATICS. Review, Algebra. Geometry.	2
LATIN. Virgil, Sallust.	5
SACRED STUDIES. Church History.	2
And one or two Electives.	
<i>Elective Studies—</i>	
FRENCH. Literature, Classic Reading.	5
GREEK. Homer, Prosody.	4
GERMAN. Grammar, Classic Reading.	4
SCIENCE. Physics or Chemistry.	5

18 to 24

General Course.

FIFTH YEAR.

WEEKLY PERIODS.

<i>Required Studies—</i>	
ENGLISH. History of English Literature 19th Century Authors.	5
HISTORY. Mediæval and Modern History.	5
SACRED STUDIES. Church History.	2
And two Electives.	
<i>Elective Studies—</i>	
FRENCH. Literature, Classic Reading.	5
SCIENCE. Physics or Chemistry.	5
GERMAN. Harris German Composition. Die Harzreise. Sesenheim Schiller's Ballads, Etc.	4
ELOCUTION.	2
MUSIC.	2
ART.	2

18 to 22

In both courses 20 credits are required for graduation—each credit representing a year's work in the Academic Department, with five weekly recitations—or two year's work with fewer recitations. Gymnasium work, two periods a week, is required of all pupils for four years and counts as one credit. No credit will be given for less than two years' work in any language. German may be substituted for French throughout the course.

College Preparatory.

<i>Required—</i>	
LATIN.	4 or 5
ENGLISH.	4 or 3
MATHEMATICS.	3
SECOND LANGUAGE.	2 or 3
SACRED STUDIES.	2
HISTORY.	1
THIRD LANGUAGE.	} 2 or 3
Or SCIENCE.	
Or HISTORY.	
PHYSICAL CULTURE.	1

20

General Course.

<i>Required—</i>	
ENGLISH.	5
HISTORY.	2
MODERN LANGUAGES.	4
MATHEMATICS.	3
SACRED STUDIES.	2
SCIENCE	1
MUSIC, ART, ELOCUTION OR OTHER ELECTIVES.	2
PHYSICAL CULTURE.	1

20

Collegiate Department

FIRST YEAR.

WEEKLY PERIODS.

Required Studies—

ENGLISH. Review of Rhetoric. Themes. English Literature.	5.
MATHEMATICS. Higher Algebra. Trigonometry. Solid Geometry	5
SACRED STUDIES. General Review of Old and New Testament History and Church History	2
Or, Study of St. John's Gospel	2

Elective Studies—

LATIN. Cicero. De Senectute and De Amicitia. Horace. Selections. Prose Composition

PSYCHOLOGY.

HISTORY OF ART.

GREEK. Language and Literature.

FRENCH. Language and Literature.

GERMAN. Language and Literature.

SECOND YEAR.

Required Studies—

SACRED STUDIES. Course of Church Doctrine and History of the Prayer-Book, or, Study of the Psalms and Isaiah 2

Elective Studies—

ENGLISH. Literature of the seventeenth and eighteenth centuries.

MATHEMATICS. Analytic Geometry.

LATIN. Livy. Tacitus, Selections. Prose Composition.

HISTORY. General, Mediæval and Modern History; or History of England or of the United States.

GREEK. Language and Literature.

FRENCH. Language and Literature.

GERMAN. Language and Literature.

Most of the work in this Department is elective, but to receive a certificate a two years' course, approved by the Sister Superior and amounting to nine credits must be accomplished.

No credit will be given for Elementary work in French or German, or for College Preparatory work in Latin.

Music

PIANO DEPARTMENT.

The Department of Music comprises instruction in piano, voice, violin, musical theory, elementary harmony, sight singing and history of music. A systematic course in piano, violin or vocal music will be allowed to count for graduation as an elective study in the General course.

The Piano Department awards a diploma at the satisfactory completion of the regular course as here given.

Before graduation the pupil is required to give from memory one complete recital, including a concerto, and other works demanding skillful execution. The technical work of the Piano Department is drawn from the following and kindred sources: Duvernoy, Heller, Czerny, Hutcheson, Leschetitzky, Lecoupey, Bertine, Kohler and others.

The following grades will denote the difficulty of the work that will be studied:

GRADE I.

Kuhlau, Clementi } Sonatinas
Haydn, Mozart }
Handel, 12 Little Pieces.
Schumann. Album for the
young.
Reinecke. Fairy Stories.

THEORY. Grammar of Music. Ear training. Scales. Keys. Modes. Intervals, Triads, simple figured bases in major and minor keys. Original melodies.

GRADE II.

Bach. 21 Little Pieces.
Grieg. Lyrics, Book I.
Schubert. Minuet B Minor.

HARMONY. Review of first grade work. Inversions of thirds, chords of the seventh, altered chords. Suspensions. Modulations.

GRADE III.

Bach. Inventions.
Beethoven Sonatas.
Chopin. Simpler Waltzes.

Organ point. Cadences. Counterpoint in 2, 3 and 4 parts. Original composition in the simpler forms. Illustrated lectures upon musical history from the earliest musical knowledge to the present day.

GRADE IV.

Bach. Well tempered Klavier.
Beethoven Sonatas.
Chopin Nocturnes. Preludes.
Schubert. Impromptus.

The study of form, the sonata, dance forms, etc., and harmonic analysis. Orchestral instruments; their use and compass. History of the orchestra. Sight reading. Four and eight hand arrangements of the symphonies and chamber music of the great composers.

Pieces are selected according to the varying needs of the pupils from the great mass of old and new piano literature. An important feature of the work is the training in ensemble playing, duos, trios and quartets for one and two pianos being studied.

Portland offers many opportunities for hearing the best music; during the past year the pupils have attended concerts by Eames, Schumann-Heink, Pachmann, Gogorza and others. Before each concert the programme is carefully explained to the pupils, that they may listen with intelligence.

Vocal Department

The aim of the vocal department is the development of the voice by a pure and natural method of tone production. All studies are selected according to the individual needs of the pupil, and songs are taken from the old composers and the best modern music. A diploma will be given at the satisfactory completion of the following course:

FIRST GRADE—Simple Theory.

Castelli's Vocalizes, Book I.
Studies in tone production and technique.
First grade songs.

SECOND GRADE—History of Music.

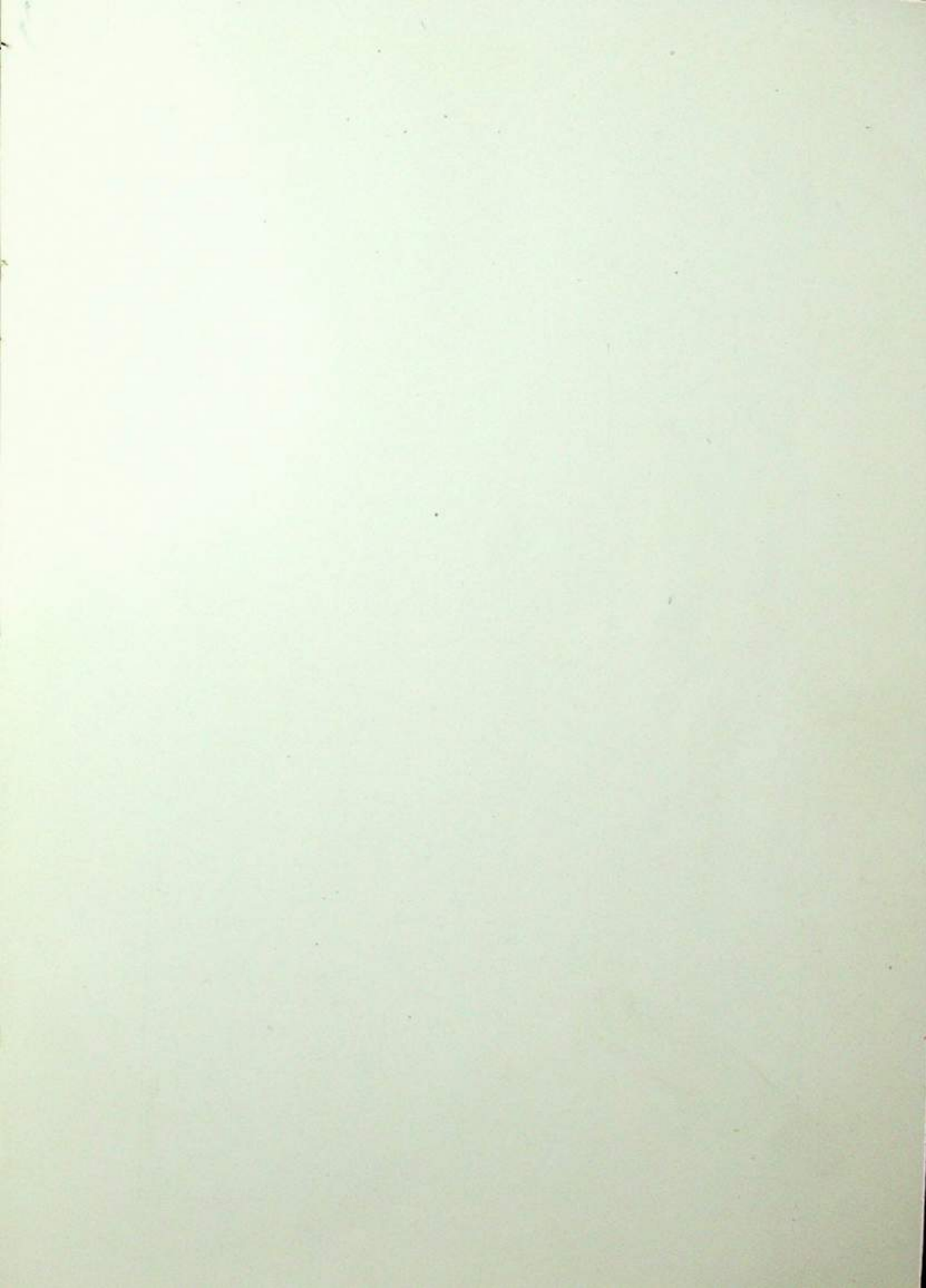
Castelli's Vocalizes. Book II.
Studies in technique and tone phrasing.
Moderately Difficult songs.

THIRD GRADE—Musical Biography.

Advanced Vocalizes and technique, with the easier Arias from Oratorio and Opera.

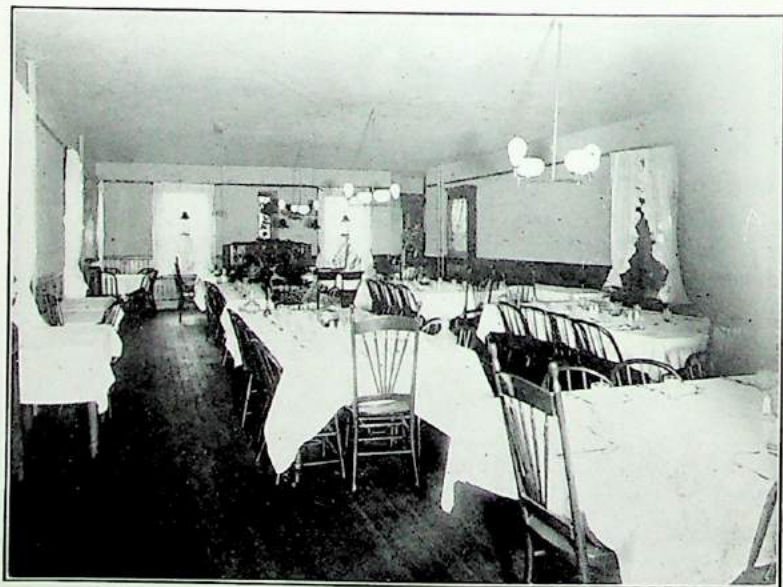
All voice pupils will be required to attend the Choral Classes, in which they receive instruction in class singing and sight reading, unless excused by the head of the department.

Before graduation a pupil must be able to conduct a simple chorus, and give one entire song recital. Pupils desiring to receive Diplomas in the Music Department must complete a course of study in the Academic Department amounting to 10 credits in History, English and Modern Languages.





STUDY HALL



DINING HALL

Elocution and Voice Culture

The aim of the instruction in this department is to grasp and express the thoughts of great minds. Especial attention is paid to the use of the speaking voice and to reading aloud. Recitation and the use of gesture are also taught and exercises in correct breathing and physical culture given.

A certificate will be given at the close of a satisfactory course of two or more years.

Art

Art instruction embraces pencil, crayon, charcoal, sepia and India ink, and painting in oil and water colors. The studio is well supplied with casts and still life, and affords every advantage for the serious study of drawing and painting.

Work in the Studio for one period weekly is required of all pupils in the Elementary Department. In the Academic Department the Art Courses are elective, and so arranged as to meet the needs of students who have much or little time. They include problems in theory and practice of design, representation and composition.

The Art History Courses aim to make the pupil familiar with the art of the past, to cultivate a feeling for beauty and develop a power of discrimination that will lead to a keener appreciation and enjoyment of that which is truly great in Art.

Elementary Department

FIRST, SECOND AND THIRD YEARS.

Colored crayon drawings of flowers, leaves, trees, etc. Illustrations of Thanksgiving and Christmas stories. Cut

forms, star, holly leaf used for decoration. Color studies in three values.

FOURTH AND FIFTH YEARS.

Drawing of leaves and flowers, pencil and brush, flat washes, arrangements and foreshortening especially considered. Drawing from memory. Three tone drawings. Color scales. Perspective of rectangular and circular objects. Color harmony. Book cover design. Landscape composition in flat tones.

SIXTH AND SEVENTH YEARS.

Sketches of flowers from nature in color. Design of initial letters. Calendar. Costume poses, figures in action. Landscape and flower drawing in color. More advanced composition.

Advanced Drawing Class.

Drawing in pencil, charcoal, pen and ink, water color or oil from casts and from life. Figure and landscape composition.

All pupils are allowed to be in the Sketch Class. When the weather permits, the class will draw landscapes in black and white or color. On Tuesday there is a Life Class for which a model is engaged; on Saturday morning the pupils pose for each other. Portland possesses an excellent Art Library, which the pupils visit as often as desired.

The Art History Class.

ARCHITECTURE

Egyptian	Byzantine
Greek	Saracenic
Roman	Gothic

SCULPTURE

Egyptian	Roman
Assyrian	Mediæval, French
Persian	German, Italian
Phoenician	Modern, Italian, French
Greek	German, English, American

PAINTING

Italian School	Dutch School
French “	German “
Spanish “	English “
Flemish “	American“

The Home

The home life of St. Helen's Hall is that of a well regulated household, in which the general tone is wholesome and happy. A Sister, assisted by the resident nurse, has the care of the pupils' health. Especial attention is paid to manners and bearing, and exercises in the Gymnasium form part of the daily routine. Each girl is required to obtain from her family physician a certificate of physical fitness before taking part in any game (such as basket ball), requiring violent exercise. A riding school near by furnishes horses and groom at a moderate charge for small riding parties. The resident teachers co-operate with the Sisters to make home life attractive and helpful. One evening in each fortnight is given to lectures, musicales and social gatherings in the reception room. Dancing, indoor games and all girlish amusements are encouraged.

A short list of correspondents and visitors is required signed by parent or guardian. Letters addressed to others than those on the list will be forwarded unopened to parents or guardians.

No bills will be paid for pupils nor money advanced to them unless a deposit has been made for that purpose and pupils are not allowed to have running accounts at any store in the city.

A monthly allowance is recommended as tending to give a young girl a proper sense of the value of money and responsibility in the use of it.

During the term no pupil will be allowed to pass a night in town out of the school building except with her parents or near relatives. Pupils may not visit anywhere without the written consent of parents or guardians. They may

receive their friends on Saturday afternoons. Visitors will not be admitted on Sunday except parents and members of the immediate family. Strangers must bring a letter of introduction from parents or guardian. Visitors may not ascend the stairs without permission.

The pupils will be allowed to visit on Saturday those friends in the city whom the parents may designate, provided those friends accompany them to and from the school, and the conduct of the pupil has been so satisfactory that they are entitled to the privilege. Pupils residing in Portland or its immediate vicinity will be allowed once in each month to spend Saturday and Sunday at home.

Magazines and telegrams will not be delivered unless approved. Newspapers are not allowed.

It is requested that no books be brought into the school. All textbooks are provided, and there is sufficient reading matter in the School Library.

Family photographs and a few framed pictures are allowed in the pupils' rooms, but not posters or advertisements.

It is desired that all bedroom decorations be simple hygienic.

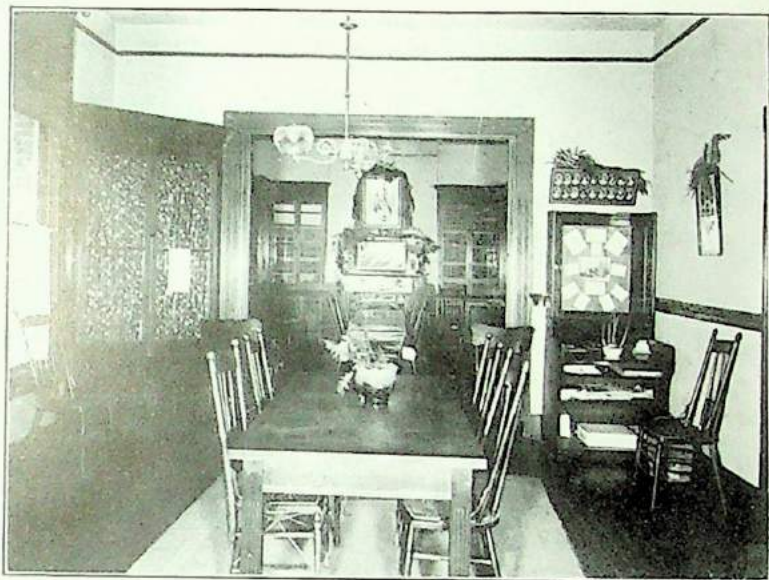
Pupils are expected to dress neatly and simply. A plain skirt with blouse waist for school, a cloth suit for Sunday and street wear, an afternoon dress of some light woolen or mixed material and a white muslin dress (high-necked and long sleeved) for musicals will meet all requirements. Neither dresses nor waists of laundered goods are allowed from November 1 to April 1, nor dresses of wash material for the school room at any time. High shoes with low heels are required for outdoor wear. Expensive jewelry is not allowed. All gowns must be high-necked. Elbow sleeves are allowed on evening gowns only. All members

of the school dress for dinner. It is requested that all dressmaking and dentistry be attended to at home.

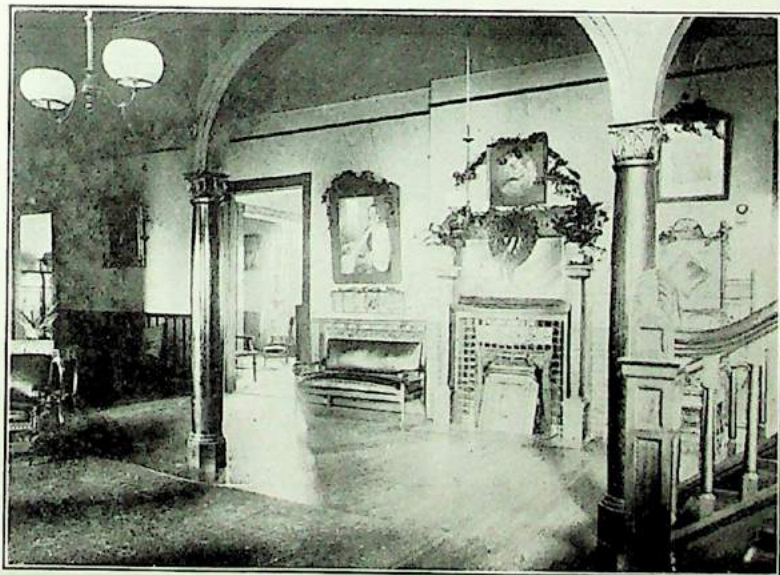
Pupils are not allowed to make dressmaking or shopping visits in town or visits to the dentist without a chaperone. A charge of fifty cents an hour will be made for chaperonage.

Requests from parents and all business communications should be sent directly to the Sister Superior and not through the pupil.

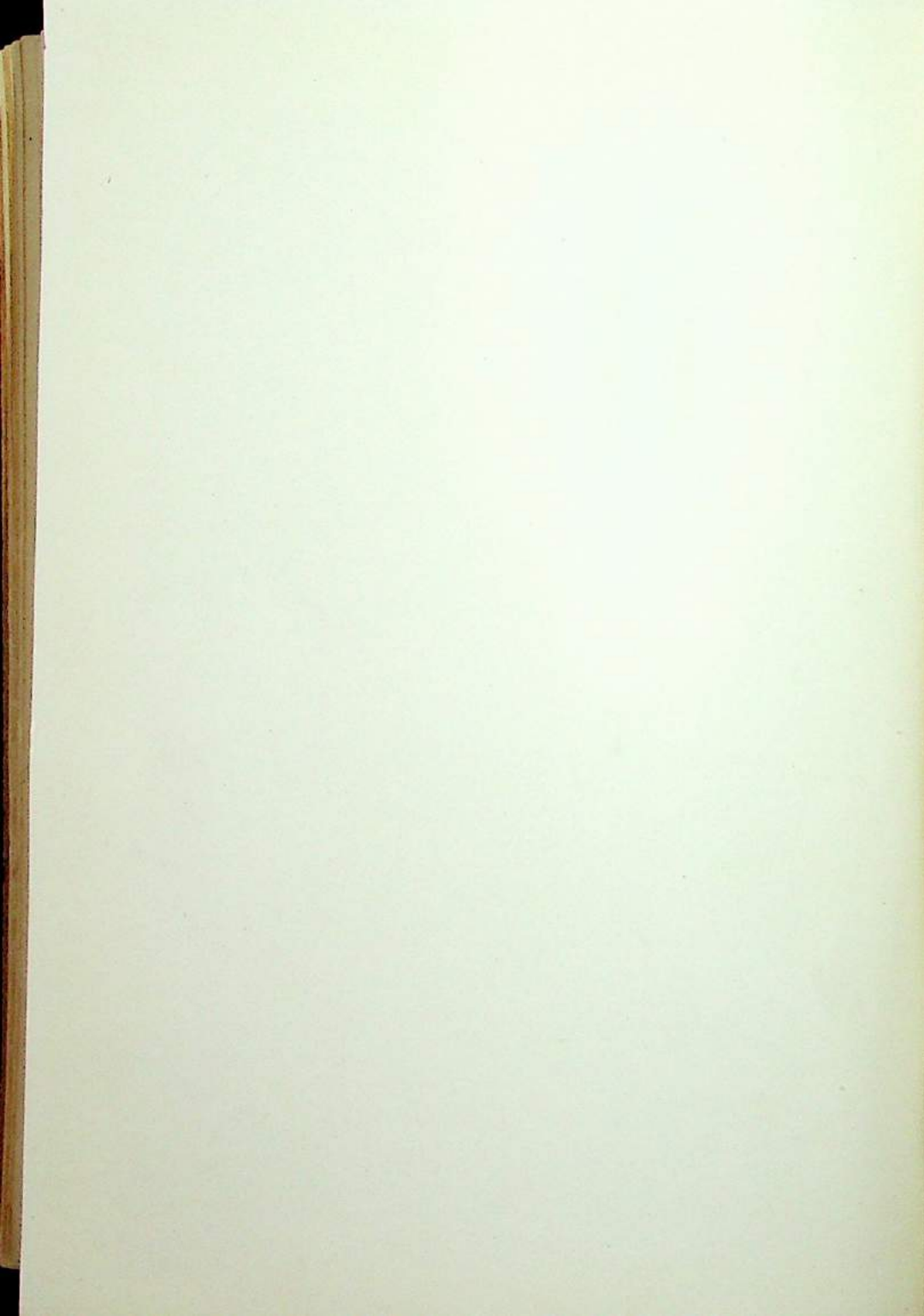
The number of resident pupils is limited to fifty. The intention is to have the school family consist of earnest girls who will cheerfully adapt themselves to such regulations as are found necessary. No pupil who shows herself impatient of control, or whose general tone and influence is harmful, can be permitted to remain in the Hall.



SENIORS ROOM AND LIBRARY



ENTRANCE HALL



School Lectures and Entertainments

1911-1912

OCTOBER—Reception by the "Old Girls" to the "New Girls."

NOVEMBER—"Pink and White" dance in the gymnasium.

Recital by Olga Steeb.

Recital by the Instructors in the Departments of Music and Elocution.

Dinner for the Senior Class given by Alice Thurston.

DECEMBER—Lecture on Ancient Buildings, with lantern slides, by Miss Laura G. Eaton.

JANUARY—Christmas Carol service.

Mrs. Jarley's wax works given by the Instructors.

FEBRUARY—Lecture on American Art, with lantern slides, by Miss Ravenscroft.

Lecture on the Scenery of Oregon and California, by Mr. Clum.

Pupils' recital (Music Department).

Pupils' recital (Department of Elocution).

Valentine party for the younger children.

Colonial dinner and dance.

Basket ball match.

APRIL—Easter Carol service.

Exhibition of gymnasium work (Elementary Department).

Exhibition of gymnasium work (Academic Department).

"The Day of the Duchess," play and tableaux vivants given by the Senior Class.

Sale of the "Society of the Royal Banner."

MAY—Two plays given by the German Department.

Play, "A Russian Romance," given by the Department of Elocution.

Class Excursions—To the new school site and elsewhere.

JUNE—Alumnæ reunion.

Commencement exercises of the Elementary Department.

Baccalaureate sermon by Rev. A. A. Morrison, Ph. D.

Commencement concert by the Music Department.

Commencement Evensong and presentation of diplomas by the Bishop of Oregon.

Commencement dance.

Societies

The **Society of the Royal Banner**—Founded St. Andrews Day, 1904, for the extension of the Kingdom of Christ in Oregon. Under the direction of the Sister Superior. Monthly meetings.

Secret Societies are not allowed in St. Helen's Hall.

The School Paper is the *St. Helen's Hall Quarterly*. It is edited by the Senior Class, assisted by the Instructors in English.

School Honours

First Testimonials will be awarded at the end of each school year to pupils attaining an average mark of 90 per cent in every study, 95 per cent in Order and Punctuality, 99 per cent in Conduct.

Second Testimonials will be awarded to those attaining 75 per cent in every study, 90 per cent in Order and Punctuality, 98 per cent in Conduct.

The **St. Helen's Hall Cross** is the highest honor in the Resident Department. It is given to any resident pupil who throughout the year is punctual, orderly, courteous and gentle in her daily conduct, and loyal to the school. It was given in 1911 to

Elva Gaskell	Lucrece Wood	Maude Walker
Gladys Holland	Nina Jack	

Testimonials 1910-1911

FIRST.

Geraldine Horn	Dorothy Vedder	Margaret Derby
Doris Smith		

SECOND.

Marie Hanson	Ruth Stryker	Marian Van Horn
Verna Menefee	Anna Barker	Martha Hoyt
Madeline Miley	Elsie Walker	Crystal Hyland
Lucrece Wood	Nina Jack	Linzee King
Evelyn Hitchcock	Myla Chambers	Ione Stewart
Ruth Hall	Alice Dabney	Miriam Todd
Kathleen Booth		

Daily Schedule

Rising Bell,	- - - - -	6:30 A. M.
Breakfast,	- - - - -	7:15 A. M.
Out-Door Exercise,	- - - - -	8:05 to 8:35 A. M.
Assemble in School Rooms,	- - - - -	8:40 A. M.
Chapel,	- - - - -	8:45 A. M.
Study and Recitation,	- - 9:00 A. M. to	1:15 P. M.
Luncheon,	- - - - -	1:15 P. M.
Study and Recitation	- - - - 2:00 to	2:45 P. M.
Recreation and Exercise,	- - - - -	2:45 to 4:00 P. M.
Dress for Dinner,	- - - - -	4:00 P. M.
Study Hour,	- - - - -	4:45 P. M.
Chapel,	- - - - -	5:45 P. M.
Dinner,	- - - - -	6:00 P. M.
Recreation,	- - - - -	7:00 to 7:30 P. M.
Study Hour,	- - - - -	7:30 to 9:00 P. M.
Lights Out,	- - - - -	9:30 P. M.
Gymnasium Work,	- - - - 2:00 to	4:00 P. M.
Studio Open Tuesday and Thursday,	- - - - -	2:00 to 4:00 P. M.

Attendance at the gymnasium is required one afternoon in each week.

Day pupils who have finished their recitations are dismissed at 1:15 P. M. if desired.

Expenses

Board, Tuition and Laundry (18 pieces weekly), per year.	\$500.00
Payable with application (advance deposit).....	25.00
Payable September 1	250.00
Payable February 1	250.00
Day Tuition, payable in advance, Sept. 14th and Feb. 1.	
Elementary Department, 1st, 2d and 3d year.....	60.00
" " 4th and 5th years.....	70.00
" " 6th and 7th years.....	80.00
Academic Department, 1st year	100.00
" " 2d, 3d and 4th years.....	120.00
Collegiate Department, per year.....	120.00

Extra Expenses

MUSIC—PIANO—Two lessons a week, including, for resident pupils, the use of the piano for two practice periods daily. Per year.....	80.00	<i>35. for 1 lesson a w</i>
VOCAL MUSIC, including, for resident pupils, use of piano for two practice periods daily. Per year.....	80.00	
PIANO OR VOCAL lessons for day pupils, two lessons a week, not including practice. Per year.....	70.00	
VIOLIN—Two half hour or one hour lesson a week. Per year	80.00	
ART—Charcoal, Pen and Ink, Oil or Water Colours, two lessons per week. Per year.....	40.00	
ART—Full course, daily lessons. Per year.....	100.00	
ELOCUTION—Two private lessons a week to pupils of St. Helen's Hall. Per year.....	60.00	
DANCING—Term of ten lessons in class.....	5.00	
FENCING—Term of ten lessons.....	5.00	
LABORATORY FEE	3.00	
Seat in Church, year.....	5.00	
Tutoring, per hour	1.00	
Hot Luncheon, day pupils, per week.....	1.00	
Graduation Fee (including life membership in the Alumnae Association)	15.00	
Library dues	1.00	

All bills must be paid before graduation.

No extra charge is made for Latin, Greek, French or German, for Class Singing, and Physical Culture.

The advance deposit is required to secure a room before the school opens and is used to meet the expenses of books, music and other school supplies. An account of the same will be rendered at the close of the school year, and any surplus returned.

The laundry work included in the regular charge does not include white skirts or dresses. Coloured undershirts should be provided and dresses or waists of wash material are not allowed to be worn from November 1 to April 1.

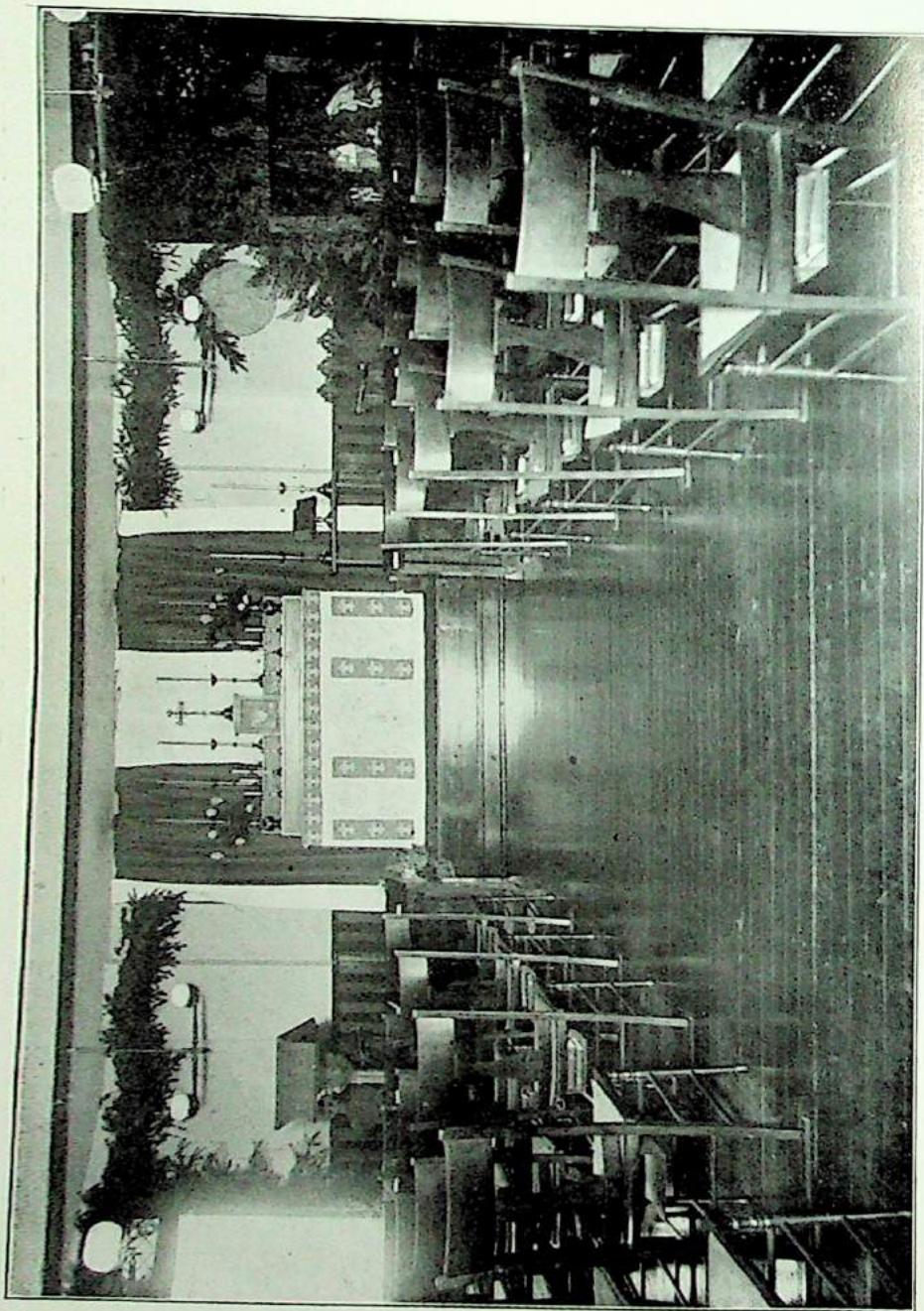
All arrangements are made for the entire school year. Pupils withdrawn before the end of the year will be charged in full except in cases of severe illness, when the loss will be equally shared. This is a distinct condition of the contract. The cause of removal must be attested by two physicians, one of whom shall be the attending physician of the school. No deduction is made for occasional absence, nor for absence during the first four weeks. It is assumed that these conditions are accepted when the pupil is entered, this being the custom of all schools in good standing.

No reduction will be made for absence of less than six weeks.

A reduction of ten per cent on board and ordinary tuition is allowed for two sisters, or fifteen for three and twenty-five for four. Interest will be charged upon all bills for board and tuition remaining unpaid at the end of the term. Accounts are subject to draft if not paid in reasonable time after they are rendered. All bills must be settled before May 20, as the year's accounts are closed May 31. When desired pupils may remain at the school during Christmas and Easter vacations and for that time will be charged at the rate of six dollars a week.

Pupils whose homes are not in Portland are required to be resident pupils at the Hall.





CHAPEL

List of Pupils

1911-1912

COLLEGIATE DEPARTMENT.

Caroline Paige	Portland
Eugenia Calhoun	Portland— 2

ACADEMIC DEPARTMENT.

Senior Class.

Manuella Briggs	New Westminster, B. C.
Ruth Church	Seattle, Wash.
Bessie Darch	Goldendale, Wash.
Edith French	Baker, Ore.
Olive Harris	Seattle, Wash.
Marie Hanson	Seattle, Wash.
Elva Gaskell	La Grande, Ore.
Ruth Hall	Portland
Genevieve Hailey	Portland
Evelyn Hitchcock	Portland
Geraldine Horn	Portland
Katrina Johnson	Boise, Idaho
Verna Menefee	Portland
Lorraine Percival	Olympia, Wash.
Eola Richards	Portland
Lucy Simpson	Quanah, Tex.
Edith Slusher	Pendleton, Ore.
Alice Thurston	Wells, Ore.
Dorothy Vedder	Jerome, Idaho
Lucrece Wood	La Grande, Ore.—20

IV.

Jane Auterson	Portland
Frances Boston	Lewiston, Idaho
Zelda Bryson	Walla Walla, Wash.
Erma Craine	Bandon, Ore.
Marguerite Emerson	Eugene, Ore.
Alice Fox	Astoria
Katharine Graham	Portland
Adelaide McCune	Portland
Mary Peter	Jacksonville, Ore.
Gladys Potter	Spray, Ore.
Ruby Steiwer	Salem, Ore.
Ruth Stryker	Portland
Amzel Samuels	Portland
Rose Taverner	Ashland, Ore.
Katharine Tooker	Portland
Julie Whitmer	Portland
Nina Blackburn	Vancouver, B. C.
May Blackburn	Vancouver, B. C.
Ruth Camp	Billings, Mont.—19

III.

Anna Barker	Portland
Lorraine Bean	Portland
Ruth Gaskell	La Grande, Ore.
Olga Freiwald	Portland
Elsie Hackett	Vancouver, B. C.
Helen Hall	Portland
Margaret Derby	Portland
Elise Holmes	Enterprise, Ore.
Elizabeth Jones	Portland
Alice Gadsby	Portland

Esther Gilpin	Portland
Isabella Macleay	Portland
Doris Smith	Portland
Willie Simpson	Quanah, Tex.
Bina Taylor	Vancouver, B. C.
Constance Taylor	Portland
Marian Van Horn	Hood River, Ore.
Elsie Walker	Portland
Adele York	Vancouver, B. C.
Eva Zimmerman	Portland—20

II.

Fay Armstrong	Corvallis, Ore.
May Albee	Dilley, Ore.
Kathleen Booth	Portland
Susan Barnes	Portland
Doris Clark	Portland
Myla Chambers	Portland
Harriet Cumming	Portland
Alice Dabney	Portland
Contance Fulton	Astoria, Ore.
Beryl Hobson	Portland
Martha Hoyt	Portland
Esther Hemstock	Portland
Natalie Hamilton	Grants Pass, Ore.
Miriam Hagedorn	Portland
Helen Hall	Portland
Crystal Hyland	Portland
Lucille Hicks	Portland
Helen Jeffers	Portland
Helen Kelly	Victoria, B. C.
Linzee King	Portland

Lorna Lewis	Olympia, Wash.
Marjorie Lewis	Portland
Willmae McKnight	Seattle, Wash.
Virginia McDonough	Portland
Hazel Scott	Vancouver, B. C.
Beatrice Stone	Hood River, Ore.
Ione Stewart	Portland
Marian Smith	Portland
Evelyn Snow	Portland
Miriam Todd	Portland
Florence Thornton	Portland
Margaret Welch	Portland
Dorothy Webster	Vancouver, B. C.—33

I.

Hazel Baucom	Portland
Isabel Clarke	Portland
Mabel Davis	Vale, Ore.
Velma Davis	Portland
Margaret Delabarre	Port Angeles, Wash.
Eileen Eshelman	Portland
Florence Gale	Chico, Cal.
Margaret Hagedorn	Portland
Jane Huson	Portland
Winifred Huber	Portland
Constance Hyland	Portland
Gladys Holland	Portland
Vera Garratt	Portland
Mary Ann Lowell	Portland
Johanna Marshall	Portland
Dorothy McMillin	Roche Harbor, Wash.
Evelina McGruder	Portland

Modesta Mortenson	Portland
Elise Oberdorfer	Portland
Margaret Platt	Portland
Amy Robinson	Portland
Caroline Simon	Portland
Hortense Smith	Elgin, Ore.
Mildred Sharpe	Spokane, Wash.
Mabel Tilley	Portland
Gertrude Walther	The Dalles, Ore.
Ethel Waite	Sutherlin, Ore.
Helen Wood	Portland
Florella Walker	Portland
Eloise Watson	Portland
Velmaleta Woolery	Portland
Ruth Wyman	Portland
Doris Upton	Portland—33
Total Collegiate and Academic	127

ELEMENTARY DEPARTMENT.

VII.

Eva Beekman	Portland
Marguerite Bergh	Portland
Lucille Bingham	Portland
Nadine Caswell	Portland
Marie Clarke	Portland
Elizabeth Hailey	Portland
Marjorie Hall	Portland
Mary Hibbs	Portland
Helen Honeyman	Portland
Helen Jones	Portland
Phyllis Griffin	Vancouver, B. C.
Jennie Loughlin	Portland

Ethel Malpas	Portland
Consuelo McMillan	Portland
Mary Muir	Portland
Elizabeth Peters	Portland
Louise Picken	Portland
Nellie Reidt	Portland
Edna Ring	Portland
Alice Smith	Portland
Vernice Slattery	Portland
Lucta Walker	Portland
Mary Wilson	Portland
Dorine Wyld	Portland—24

VI.

Mary Appleby	Portland
Nadine Baker	Portland
Charlotte Breyman	Portland
Caroline Cannon	Portland
Inez Chambers	Portland
Mary Gill	Portland
Marjorie Hobart	Portland
Elizabeth Huber	Portland
Agnes Inks	Portland
Adeline Kendall	Portland
Jessie Perry	Portland
Janet Peters	Portland
Aimee Pernot	Portland
Jean Wilson	Portland
Vivian Soule	Portland
Katharine Wheeler	Portland—16

V.

Ruth Bathurst	Portland
Marie Jackson	Portland

Muriel Keyer	Portland
Sarah Lang	Portland
Dorothy Leadbetter	Portland
Dorothy May	Portland
Lois Nitchy	Portland
Ruth Thomas	Portland
Anna Wheeler	Portland
Marian Whiteside	Portland—10

IV.

Marjorie Campbell	Portland
La Dessa Gibson	Portland
Jean Meier	Portland
Jeanette Meier	Portland
Marian Sichel	Portland
Mary Helen Spalding	Portland
Olive Baker	Cranbrook, B. C.— 7

III.

Frances Baker	Portland
Elsie Perry	Portland
Philippa Sherman	Portland
Eleanor Simpson	Portland
Lucille Vogt	Portland
Ruth Ferguson	Portland— 6

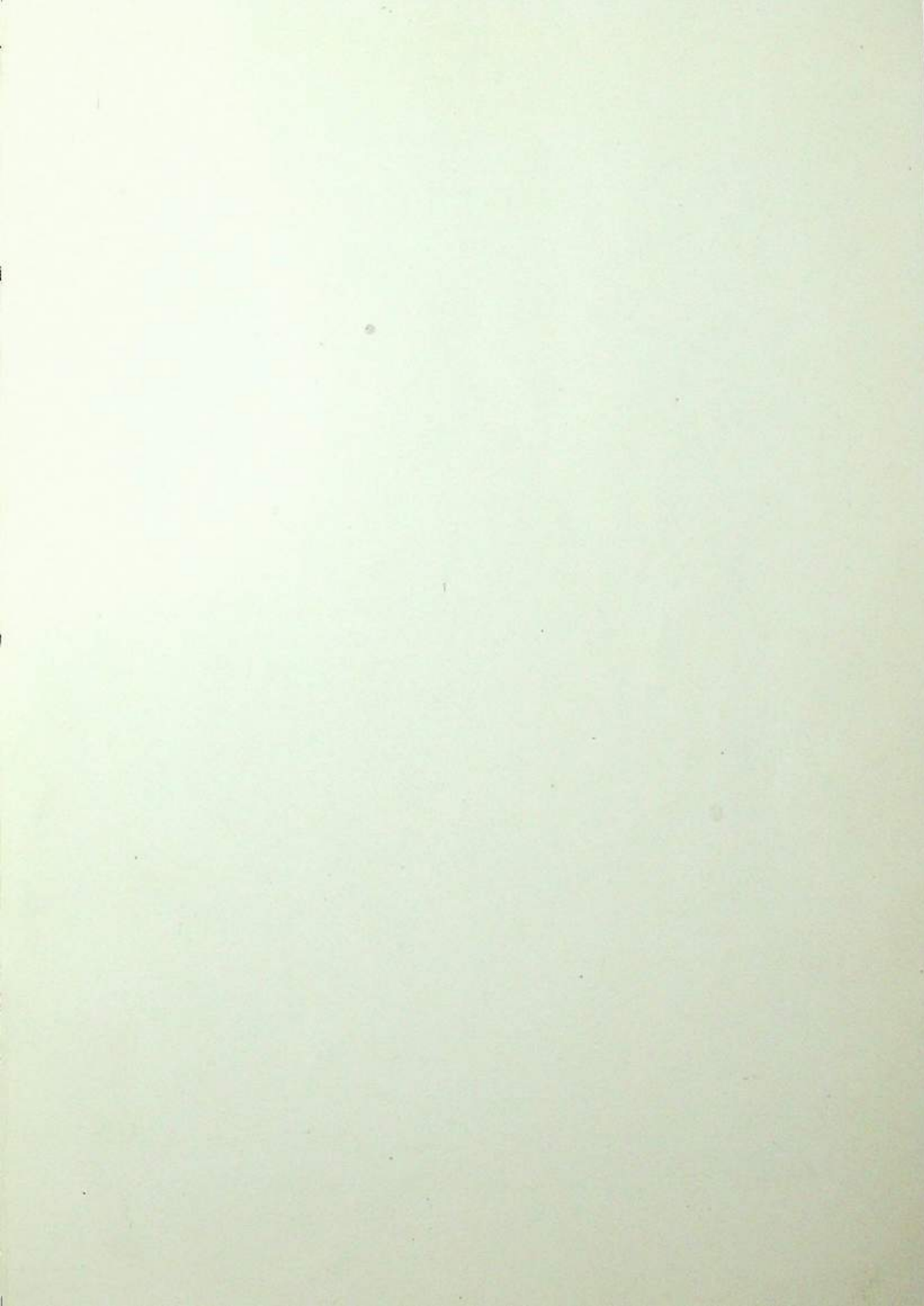
II.

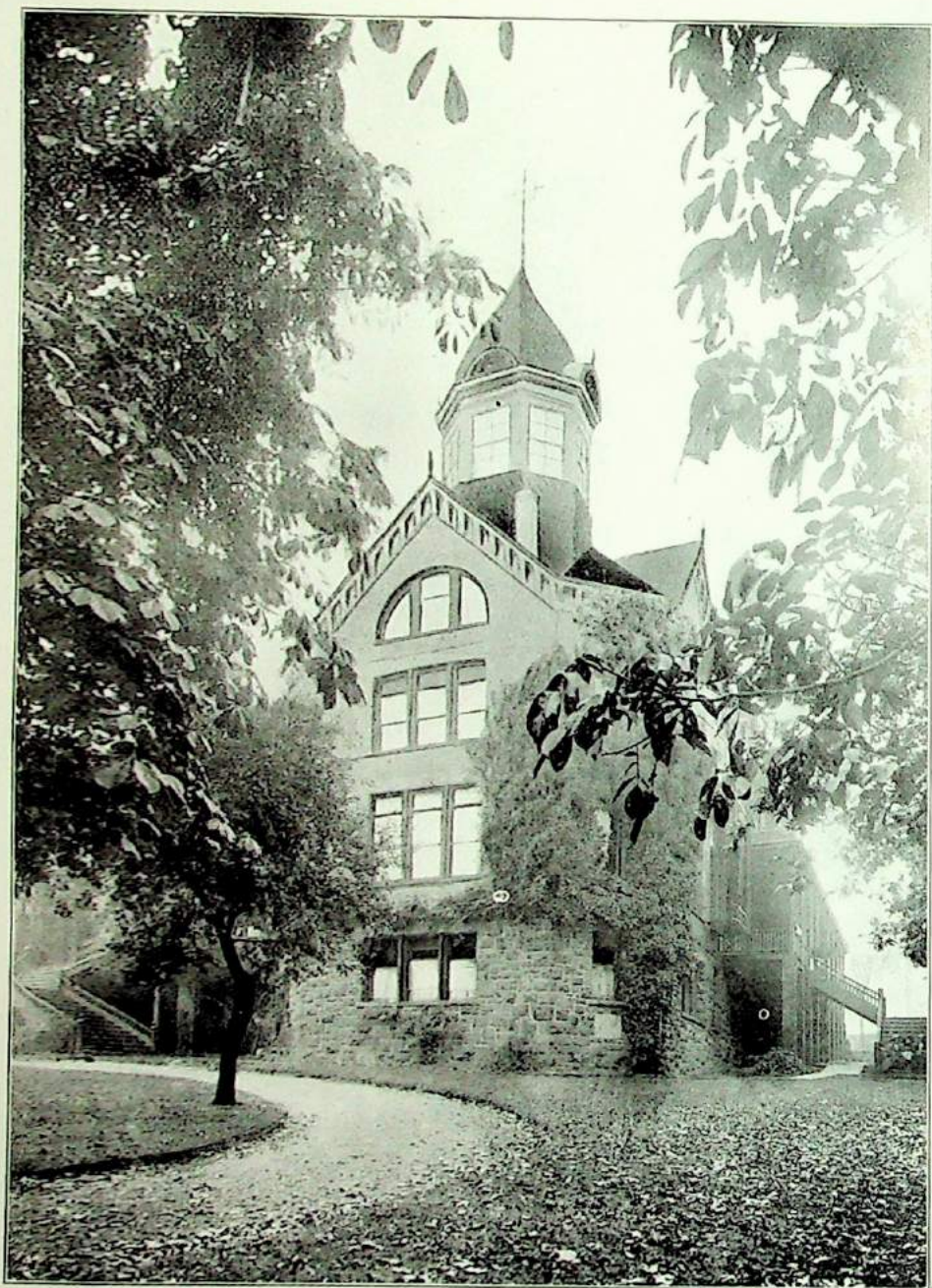
Marcia Knight	Portland
Garland Knight	Portland
Suzanne Caswell	Portland
Katharine Hendrick	Portland

Elizabeth Leadbetter	Portland
Marian Scott	Portland
Jessie Smith	Portland—7

I.

Melba Anderson	Portland
Harriet Breyman	Portland
Margaret Boyer	Portland
Helen Ernst	Portland
Caroline Everding	Portland
Phyllis Furbeck	Portland
Helen Jackson	Portland
Lillian Mitchell	Portland
Elsa Meier	Portland
Marian Peacock	Portland
Frances Spalding	Portland—11
Irene Canby (special)	Portland
Total elementary	82
Total enrollment	209





ST. HELEN'S, HALL NORTH END

Needs of St. Helen's Hall



A Permanent Endowment Fund.

A Building Fund. A larger site and new buildings will soon be a necessity. The new chapel will be a memorial to Mary B. Rodney, first Principal. For this there is a fund of between two and three thousand dollars, ten thousand will be required for the chapel, and gifts toward other buildings will be greatly appreciated.

Increased Scholarship Funds. There are scholarship funds to the amount of \$15,000, but more could be used to the advantage of deserving girls.

Forms of Bequest

I give and bequeath to The Board of Trustees of St. Helen's Hall, a corporation organized under and by virtue of the laws of the State of Oregon, the sum of Dollars to be invested and called the Endowment Fund. The interest of such investment shall be applied to the payment of salaries of teachers of St. Helen's Hall, or such other operating expenses as the Board of Trustees may deem expedient.



I give and bequeath to the Board of Trustees of St. Helen's Hall, a corporation organized and existing under and by virtue of the laws of the State of Oregon, the sum of Dollars, to be invested and called the Building Fund, the accrued interest thereon to be likewise invested from time to time and principal and accrued interest to be expended at the discretion of the Board of Trustees in the erection of new buildings or the addition to present buildings of St. Helen's Hall.



I give and bequeath to the Board of Trustees of St. Helen's Hall, a corporation organized under and by virtue of the laws of the State of Oregon, the sum of Dollars for the endowment of a scholarship to be known as the Scholarship. The principal of the bequest to be safely invested by the Board of Trustees and the income applied to the assistance of deserving students at St. Helen's Hall.

List of Graduates

1872.

SALLY C. CAMPBELL,
MARY H. COUCH,
MARGARET R. GEARHARDT,
ALICE M. HENDERSON,
MARY TAYLOR.

1873.

"The end of learning is to know God."

LAURA P. ADAIR,
HORTENSE C. VAN FRIDAGH,
IOLA M. BRISTOW,

1874.

"Look up."

ANNA H. BRECK,
KATE S. HOLMAN,
SOPHIA HOLMAN,
MARY L. KELLY,
ALLETTA T. LINDSLEY,
MARY R. MORRIS,
MARY C. WILSON.

1875.

HELEN G. BRECK,
VALICIA BROWN,
ELVIRA L. CRELLIN,
ANNIE G. DELINN,
ALICE S. HIGGINS.

1876.

"Festina Lente."

CARRIE CAPLES,
JENNIE CAPLES,
CLARA A. HUMASON,
MARY EMMA LEWIS,
MARY E. STONE.

1877.

"Be what you are."

LUELLA C. CARSON,
HENRIETTA E. FAILING,
NELLY SEELYE,
KATE S. STOREY,
NELLY A. WYGANT.

ST. HELEN'S HALL

1878.

"Semper Sursum."

L. ELLEN A. STEPHENS,

ELLA L. WOODS.

1879.

ELLEN STRONG,

CAROLINE STRONG.

1880.

"High be our thoughts."

FRANCES P. BURNSIDE,

LIZZIE W. MYRICK.

CLARA C. MUNSON.

1881.

"Deserve the best."

MARIA F. CLOPTON,

IDA K. MCKENNA,

MARGARET GREEN,

CLARA E. NORTHRUP,

ELIZABETH IRVING,

MARY A. SHINDLER,

SUSAN WHALLEY.

1882.

VIRGINIA H. WHITING.

1883.

"The readiness is all."

CHARLOTTE E. CRAWFORD.

1884.

"Follow, follow, thou shalt win."

ALICE M. CHANCE.

1885.

"Nulla palma sine pulvera."

EMILY C. FAILING.

1886.

"For all eternity."

NELLIE L. CASE,
EUGENIA CUNNINGHAM,
ALICE B. CRAWFORD,

CORNELIA EATON,
JOCELYN FOULKES,
ORONOCO L. RANDALL.

1887.

"True to the kindred points of Heaven and home."

LAURA CAMPBELL,
HENRIETTA H. FAILING,
MARTHA A. HOYT,

JESSIE MURCH,
CLARA M. ROSENBERG,
DORA N. TAYLOR.

1888.

MABEL BECK.

1889.

"Spero."

ELLA HIRCH,

MAY GOLDSMITH.

1890.

"Non stando sed ambulando."

LUCRETIA ALLEN,
ELIZABETH M. CADWELL,
MARY J. CHARMAN,

ELIZABETH A. LAMBERT,
HENRIETTA SINSHEIMER,
JANE WHALLEY.

1891.

MABELLE C. DENT,
CAROLINE W. FLANDERS,

JULIA HAMILTON,
EMMA E. WINTLER.

1892.

"Hodie."

ALICE C. FAILING,
ELLA JORDAN,

HATTIE M. NEWMAN,
KATHRYN WINTLER.

1893.

"Nulla dies sine linea."

LOUISE F. KUEBLI,

CHARLOTTE WHALLEY.

1894.

META ALLEN,
KULLA C. MCFADDEN,

ANNA B. SCOTT,
KATHLEEN SEELEY.

1895.

"Non sibi."

STELLA H. SPEDDEN,

MYRTLE L. SMITH.

1896.

"L'Esperance."

ALICE C. ANDREWS,
IDALIA J. BENSON,
EMMA L. BOOTH,
AMY J. BRATTON,

OCTAVIA DRAKE,
LENA A. EDDY,
EDNA HAIGHT,
L. ESTELLE KILLEN.

1897.

"Per angusta ad angusta."

KATHARINE F. FAILING,
F. BYLIEU LOUNSBURY,

DORCAS MERRILL,
IDA THOMPSON,
AILEEN WEBBER.

1898.

"Nulla vestigia retrorsum."

STELLA ALEXANDER,

MARION BAUER,
FRANCES JACOBS.

1899.

"Vincit qui se vincit."

ROSA JOSEPHSON,
RUTH LOVERIDGE,

CHARLOTTE OHLE,
LILLIAN WOLLENBURG,
NATALIE WOLLENBURG.

1900.

"Facta non verba."

HELEN RAMSDELL,

SALLY POWELL.

1901.

"Viam aut inveniam aut faciam."

THORA POULSEN,	FANNY SWARTZ,
HILDA HEXTER,	FRANCES LANE,
KATHARINE ARNOLD,	EULA MCCULLY.

1902.

"Praesis aut prosis."

MARION GRAY,	ETHELWYNNE HARRIS,
	MURIEL WEATHERDON.

1903.

"Probitas verus honos."

ELIZABETH STEWART.

1904.

"Esse quod esse videris."

SUSAN GENEVIEVE BELLUS,	ELIZABETH BLODGETT LORD,
KATE ESTHER RAMSDELL,	WILLETA LEETZER,
SARA JEAN WINANS,	MABEL ALICE NISSLER,
JOSEPHINE ESTHER SMITH,	MIRIAM VAN WATERS,
GLADYS ATKINS FARRAR,	MARCIA WADE,
RENA KUHNS,	MARGARET SOPHIA WALTER.

1905.

"Surge illuminare."

BYRA ABBOTT,	DOROTHY LANGFITT,
EVA BAILEY,	MYRA LOVERIDGE,
CLARA BOOT,	ALICE MCCORMAC,
HELEN COLDWELL,	CLARA MACEWAN,
ALICE COLLIER,	MARGARET MORRISON,
CATHERINE EMMONS,	CARRIE SHORT,
GERTRUDE GRAY,	MAUD VAN DUSEN,
JESSIE GRIMMETT,	WINIFRED VAN DUSEN.

1906.

"Lux et Veritas."

ELIZABETH ARMSTRONG,
KATHLEEN ARMSTRONG,
ARLINE DAVIS,
JANET GRAY,

HELENA HUGHES,
ISABEL HUGHES,
GERTRUDE JONES,
GENEVIEVE SENGSTACKEN.

1907.

"Fortiter, Fideliter, Feliciter."

MARGUERITE CROSBY,
LOUISE EMMONS,
HAZEL FERRIS,
HILDA HAGEDORN,
JESSIE HALE,

MARY HEWITT,
HAZEL ROBB,
MERCEDES SIMS,
JUNB STERLING,
HAZEL TICHENER,
EVELYN WILSON.

1908.

"Posside Sapientiam."

MARGARET BOOT,
SHANNA CUMMING,
FLORA DAVIS,
LEONIDE FLEURY,
IONE LAMBERT,

GWENDOLYN LLWYD,
MAUDE MEENACH,
ALTA RING,
ETHEL C. TOWERS,
OLIVE WILSON.

1909.

"Labore et Honore."

ELIZABETH BLAIR,
VIEVE CECIL,
FRANCES CLAY,
MARGARET COLDWELL,
GRACE COLLIER,
CLAUDIA FLIEDNER,
DOROTHY GILBERT,

DAISY GREEN,
CLARA GRIM,
STELL S,
EMMELINE POWELL,
LUCY POWELL,
ELLEN THIELSEN,
HELEN WHITE,
ROXANA WHITE.

ST. HELEN'S HALL

49

1910.

"Laetus sorte mea."

MARGARET LESLIE EMMONS,	MARGUERITE ROHSE,
MARGARET W. HEWETT,	ANNA STREIFF,
CLEMENTINE LAMBERT,	MAY WALTHER,
JUANITA MATLOCK,	HELEN T. WATT,
HAZEL MORROW,	HELEN L. WHITNEY.

1911.

"Veritas Vincit."

MARY BLOSSOM,	DOROTHY HUBER,
LORA CUMMING,	FERN HUTCHINSON,
CASSIB HILLER,	WINIFRED LONDON,
	GENE SPENCER.

1912.

"Surgamus et aedificemus."

MANUELLA BRIGGS,	GERALDINE HORN,
ELIZABETH DARCH,	VERNA MENEFEF,
ELVA GASKELL,	LORRAINE PERCIVAL,
RUTH HALL,	EOLA RICHARDS,
GENEVIEVE HAILEY,	LUCY SIMPSON,
MARIE HANSEN,	EDITH SLUSHER,
OLIVR HARRIS,	ALICE THURSTON,
EVELYN HITCHCOCK,	LUCRECE WOOD.

COLLEGIATE DEPARTMENT.

1909.

LOUISE CECIL,	ADELE DYOTT.
---------------	--------------

1910.

NELLIE LATHROP,	MYRTLE MARGARET SMITH.
-----------------	------------------------

1911.

MARY BEL HANCOCK,	CARRIE PAIGE,
HELEN HOLBROOK,	LUCY POWELL.

1906.

"Lux et Veritas."

ELIZABETH ARMSTRONG,
KATHLEEN ARMSTRONG,
ARLINE DAVIS,
JANET GRAY,

HELENA HUGHES,
ISABEL HUGHES,
GERTRUDE JONES,
GENEVIEVE SENGSTACKEN.

1907.

"Fortiter, Fideliter, Feliciter."

MARGUERITE CROSBY,
LOUISE EMMONS,
HAZEL FERRIS,
HILDA HAGEDORN,
JESSIE HALE,

MARY HEWITT,
HAZEL ROBB,
MERCEDES SIMS,
JUNB STERLING,
HAZEL TICHENER,
EVELYN WILSON.

1908.

"Posside Sapientiam."

MARGARET BOOT,
SHANNA CUMMING,
FLORA DAVIS,
LEONIDE FLEURY,
IONE LAMBERT,

GWENDOLYN LLWYD,
MAUD MEENACH,
ALTA RING,
ETHEL C. TOWERS,
OLIVE WILSON.

1909.

"Labore et Honore."

ELIZABETH BLAIR,
VIEVE CECIL,
FRANCES CLAY,
MARGARET COLDWELL,
GRACE COLLIER,
CLAUDIA FLIEDNER,
DOROTHY GILBERT,

DAISY GREEN,
CLARA GRIM,
STELL S,
EMMELINE POWELL,
LUCY POWELL,
ELLEN THIELSEN,
HELEN WHITE,
ROXANA WHITE.

DEPARTMENT OF MUSIC.

1907.

MARY MAUD CARLISLE,

ADA WEST.

1909.

GWENDOLYN LLAVYD.

1911.

MARGARET COLDWELL.

1912.

DOROTHY VEDDER.

MANUELLA BRIGGS.

KINDERGARTEN TRAINING CLASS.

1902.

NINA NESBIT,

EDITH HABERSHAM,
RUTH GILMAN.

1903.

AUGUSTA HUMPHREYS,

MARY BOYS.

1904.

BESSIE M. DE BEVOISE,
LILLIAN V. JAMESON,E. MAY PENWILL,
HELEN M. STAFFORD.

1905.

GERTRUDE HUTCHINSON,

ETHEL WALTER.

1906.

ELSIE BACKUS,
KATHARINE GILBERT,
GERTRUDE GILL,ETHELWYNNE HARRIS,
SARA LEADBETTER,
RACHEL SMITH.

ST. HELEN'S HALL

51

1907.

HELEN BOOTH,
HELEN COLDWELL,
BEULAH DUNCOMB.

MARY MCINTOSH,
JOSEPHINE SCHELL,
PEARL SCHELL.

1908.

CLARA THOMPSON,

JESSIE TUPPER.

1909.

ETHEL BILLINGS,

REBECCA N. HATTON,
MYRTLE STOCK.

1910.

LEONIDE FLEURY,
JESSIE MACDONALD,

CARROLL MCCOLLUM,
ERMINE OWEN.

1911.

HELEN GANNETT.

IV Percentage
Interest

$\frac{1}{2}\%$ = $\frac{76}{35}$ for 1 lesson

$\frac{1}{2}\%$ = $\frac{76}{35}$ for 1 lesson

$\frac{1}{2}\%$ = $\frac{76}{35}$