

IV Percentage
Interest

$\frac{1}{2}\%$ = 35 for 1 lesson

$\frac{1}{2}\%$ = 35 for 1 lesson

$(\frac{1}{2}\%) \times 100$

1913-14

ST. HELEN'S HALL

PORTLAND, OREGON

Resident and Day School for Girls

UNDER THE AUSPICES OF

THE EPISCOPAL CHURCH

IN THE DIOCESE OF OREGON



FORTY-FIFTH YEAR



"That our daughters may be as the polished corners of the temple"



"Education is the end to be attained. Instruction is one of the means. Instruction provides the mind with the knowledge of certain things; Education forms at the same time the understanding, the heart, the character and the conscience."

FELIX DUPANLOUP.

Board of Trustees of St. Helen's Hall



THE RT. REV. CHARLES SCADDING, D.D., BISHOP OF OREGON, *Chairman*

THE REV. A. A. MORRISON, PH. D.

JOHN KOLLOCK

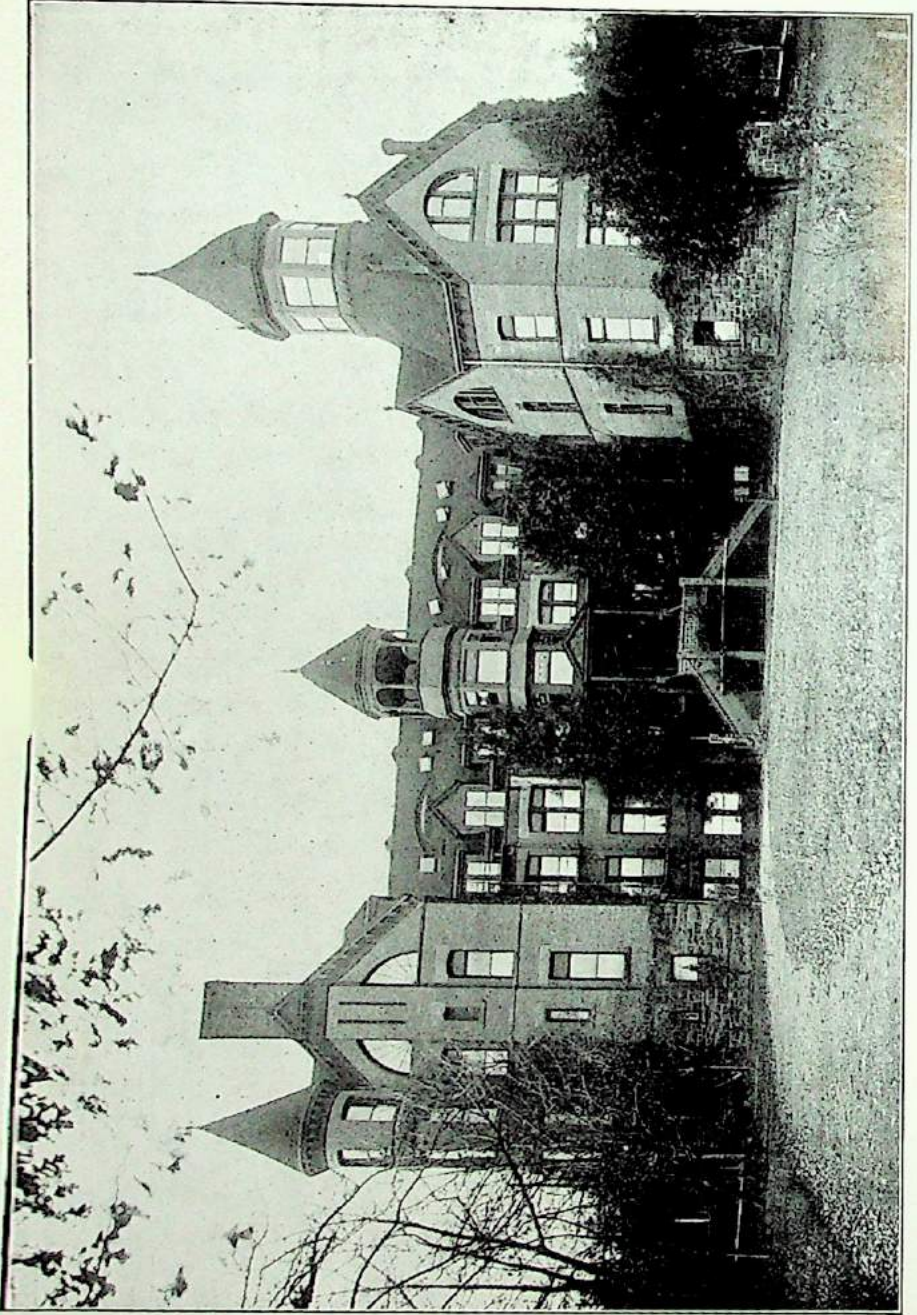
THE REV. JOHN DAWSON.

H. B. LEONARD

THE REV. H. D. CHAMBERS.

C. B. PFAHLER

JOHN KOLLOCK, *Secretary*



ST. HELEN'S HALL, EAST FRONT



SAINT HELEN'S HALL was established by the Rt. Rev. B. Wistar Morris, D. D., and opened September, 1869, with Miss Mary B. Rodney as Principal. The ground upon which the school was first built was secured through the liberality of Mr. John D. Wolfe and his daughter, Miss Catharine Wolfe, of New York City,

whose large hearted generosity should ever be remembered in recalling the early history of this institution. The school continued its work in the original building on Fourth Street, between Madison and Jefferson, until the year 1890, when the property was sold to the City of Portland, for the use of the City Hall. On the 9th of June of that year, the corner stone of the present large and commodious building was laid, and on the 24th of February, 1891, the school was moved to its new home.

Miss Mary Rodney died April 15th, 1896, and the work was carried on by her sisters the Misses Rodney until the close of the school year. At the opening of the next year, Miss Eleanor Tebbetts, Ph. D., became principal and remained in that office till the end of June, 1904.

By request of the Board of Trustees, the Sisters of St. John Baptist (founded at Clewer, England, in 1851, and affiliated in this country in 1881) then undertook the charge of the school and trust that God will continue to bless their endeavors for its prosperity and increased usefulness.

Officers and Instructors

1913-1914



THE RIGHT REVEREND CHARLES SCADDING, D. D., BISHOP OF OREGON
Rector

THE REV. W. A. M. BRECK
Chaplain

THE SISTERS OF ST. JOHN BAPTIST
General Superintendence, Holy Scripture, Church History

Miss Grace A. Pierce
(Wellesley College)
GREEK AND LATIN

Miss Josephine Emerson
(Smith College)
MATHEMATICS

Miss Marion DeForest
(Wilson College)
ENGLISH AND HISTORY.

Miss Laura G. Eaton
(Cheltenham Ladies' College)
(University of London)
SCIENCE AND HISTORY

Miss Ruth Merrill
ELOCUTION AND ENGLISH

Miss Frances Griffin
PHYSICAL CULTURE

Mademoiselle Hercent
Diplomee
FRENCH

Miss Evangeline Breck
FRENCH

Madame Anna Jacques
GERMAN

Miss Ethelinde Bridgham
(New England Conservatory)
PIANO

Miss June Roberts
(Daurosch Conservatory) -
PIANO

Miss Edith Clark Patterson
(New England Conservatory)
VOCAL MUSIC

Mrs. Susie Fennel Pipes
VIOLIN

Miss Ellen Ravenscroft
(Chase School of Art, New York)
ART

Miss Ella Acheson
ELEMENTARY DEPARTMENT

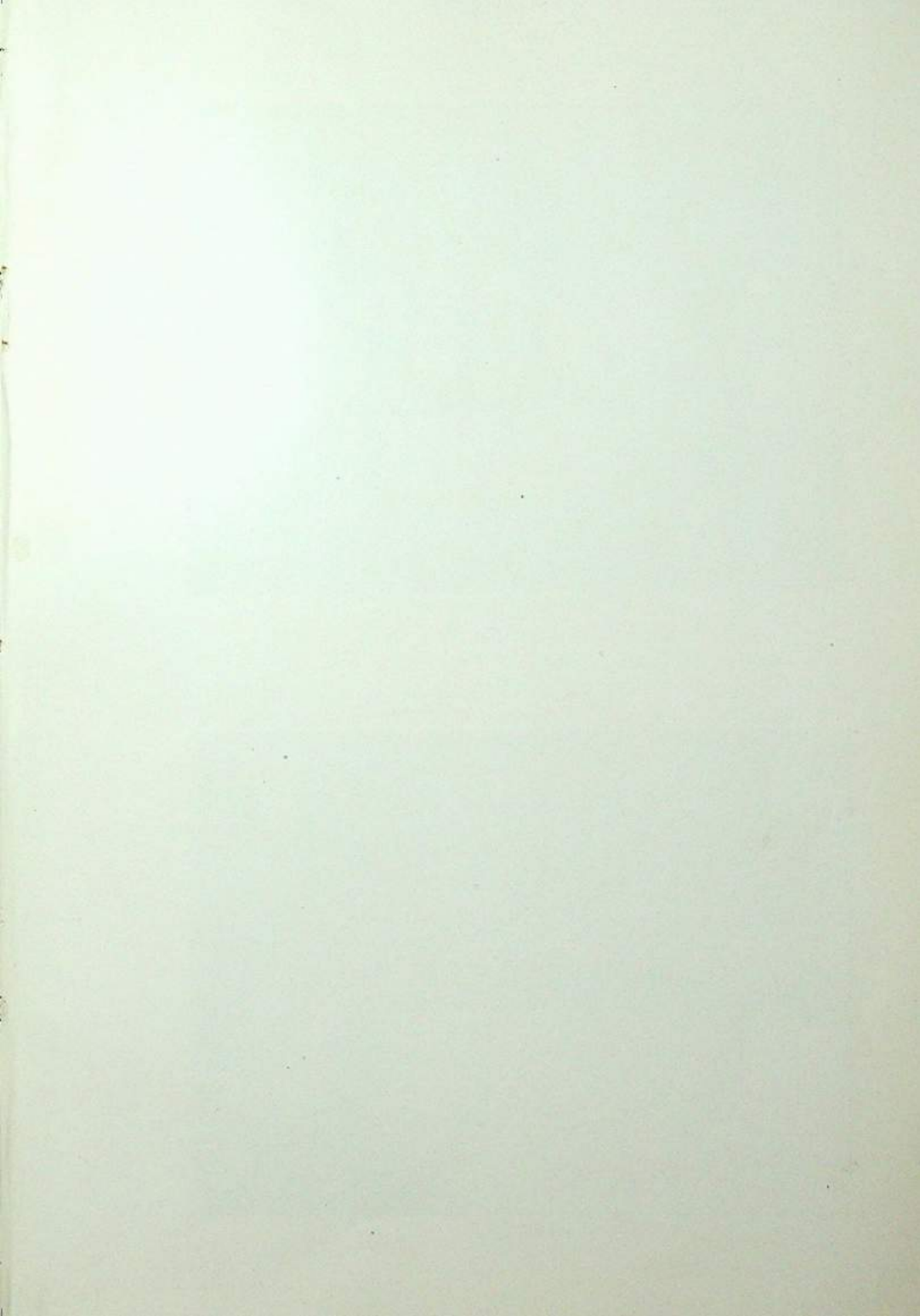
Miss Helena Kiersted
ELEMENTARY DEPARTMENT

Miss Leonide Fleury
ELEMENTARY DEPARTMENT

Calendar

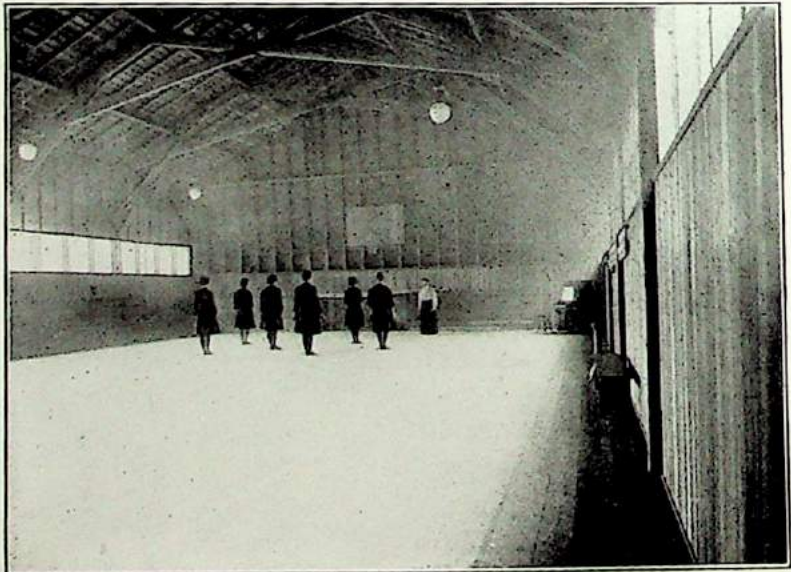
1913-1914

- May 31, 1913. Reunion of Alumnae.
June 8, 1913. Baccalaureate Sunday.
June 9, 1913. Commencement.
Sept. 15, 1913. Forty-fifth year begins.
Nov. 27, 1913. Thanksgiving Day.
Dec. 19, 1913. Christmas Vacation begins—3 p. m.
Jan. 5, 1914. Christmas Vacation ends—9 a. m.
Feb. 22, 1914. Washington's Birthday.
April 10, 1914. Good Friday.
April 12, 1914. Easter Day.
April 17, 1914. Easter Vacation begins—3 p. m.
April 26, 1914. Easter Vacation ends—9 a. m.
May 30, 1914. Memorial Day.
June 16, 1914. Commencement.





STUDIO



GYMNASIUM

The School

The aim of St. Helen's Hall is to provide for girls the best possible facilities for complete education. This means not only the cultivation of the intellect and the acquirement of graceful womanly accomplishments but also such moral and religious training as shall help the pupils to become pure, true women, with a high positive standard of Christian living.

No school could have a more beautiful location. The building, a handsome brick structure, is on a height overlooking the city, and surrounded by lines of soft blue hills broken by the snowy peaks of Mt. Hood and Mt. St. Helens and the distant white crest of the Cascades. It is thoroughly heated by hot water circulation, and well ventilated. There are two stairways from the third floor, and fire escapes. The Chief of the Portland Fire Department has the supervision of all the provisions for safety in case of fire, and inspects the fire escapes from time to time. The plumbing is under the care of one of the best sanitary plumbers in the city.

The interior administration of the school has been entrusted to the Sisters of St. John Baptist, who have the general superintendence of every department. In secular studies they are assisted by a staff of efficient instructors, either college graduates or especially trained for their work.

A daily record is kept of the attendance, scholarship and deportment of every pupil, and a report of the same is mailed to parents quarterly.

Pupils failing, after a fair trial, to attain the required standard of scholarship or deportment, will not be retained in the school.

The Sister Superior will always be glad to receive visits from the parents of pupils.

The school consists of three departments—**Elementary, Academic and Collegiate**; and the special departments of Music, Art and Elocution.

The **Elementary Department** is divided into seven classes covering in English and Arithmetic the same ground as the Elementary public school but including a broader range of subjects.

The **Academic** department covers five years and is divided into two courses, the College Preparatory Course and the General Course. The College Preparatory Course is so arranged as to meet the requirements of the leading Eastern colleges without undue pressure.

The General Course is intended for pupils desiring to lay the foundation of a broad general education, and meets the requirements of those universities and colleges which do not require four years' preparatory work in Latin. In it the time, which in the College Preparatory Course is necessarily spent in Latin, is devoted to Literature, History and Modern Languages. Much of the work is common to both courses, and the standard of thoroughness is the same.

The certificate of St. Helen's Hall is accepted instead of entrance examinations at Wellesley and Vassar Colleges, also at the State Universities of Oregon and Washington.

Music, Art and Elocution count as regular elective studies in the General Course. Either Course satisfactorily completed entitles a pupil to the diploma of the school.

In both courses twenty credits are required for graduation, each credit representing a year's work of five recitations a week. Twenty recitations a week are required of all pupils not studying Music or Art, fifteen recitations a week are required of Music and Art pupils.

The Collegiate Department.

St. Helen's Hall offers two years' advanced work in Languages, Mathematics, History and Literature, equivalent to the work of the first two years in college.

At the completion of a two years' course of collegiate work, amounting to nine credits, a certificate will be given.

English.

The aim in this course is to give pupils thorough instruction in English Grammar and Rhetoric, to enable them to write with ease and accuracy, and to teach them to appreciate what is best in English Literature. From the lowest class the reading matter is carefully selected, and in the third year of the Academic Course a brief history of English Literature is studied. After this the work consists chiefly in the writing of compositions and the critical study of English masterpieces, especially those required for College entrance examinations. Especial effort is made to form a taste for good literature, and courses of reading are planned for the summer vacation.

French and German.

In these courses the aim is to enable the pupil to read the languages at sight and speak and write them easily.

In order to acquire a good pronunciation the study of French should be begun in the Elementary Department, the lessons at first being in the form of conversation and easy

reading. Afterward grammar and translation are begun. In the last year of the Course, French composition, History and Literature are studied, and French is the language of the class room. In the case of resident pupils the French talks offer additional opportunities for conversation.

German may be begun in the first or second year of the Academic Course and carried to the point required for admission to college or beyond it as may be desired. Attention is paid to pronunciation, conversation and sight reading, as well as to grammar and translation, and German songs and plays are studied.

Latin and Greek

"Latin and Greek are not regarded as dead languages except in the sense that all language of books not in our era is dead. They are living in the sense that the English of Chaucer and the Italian of Dante are alive, dead only to those to whom for lack of knowledge they are sealed books." (Cambridge School Manual.)

A five years' course of Latin is provided, including beside the usual college requirements of Caesar, Cicero, Virgil, Ovid and prose composition, a fifth year for Sallust and sight-reading. By beginning Latin early in the course the sense of hurry and strain is avoided and there is time enough to make the study interesting and delightful as all true intellectual work ought to be.

The course in Greek covers three years; the previous work in Latin having prepared the pupil for its intelligent study. The first year is given to grammar and exercises, the second to Xenophon, the third to Homer. It is desirable though not essential, that pupils preparing for college should elect Greek as their third language.

History

The study of History is begun in the Elementary Department and continued to the end of the school course. In the College Preparatory Course it is necessarily limited to college requirements, which, however, are constantly increasing both as to quantity and quality. In the General Course three courses of History are provided. The topical method is approved, collateral reading is encouraged. Maps are drawn, and historical geography is held to be an important part of the work. History and English are intimately associated; pupils being required to commit to memory historical poems, and to write compositions on subjects drawn from historical lessons. The school is fortunate in possessing a fairly good though small library of history and literature bearing upon it.

Mathematics

"In teaching mathematics the aim is to develop the spirit of enquiry, the habit of accuracy in reasoning, and the love of truth." (Cambridge School Manual.)

The prescribed course comprises Arithmetic, Algebra, Plane and Solid Geometry.

Throughout the course original work is encouraged, and set rules are avoided. The pupils are encouraged to rely as little as possible upon text books.

Science

This department is conducted in accordance with the best scientific methods. Natural History is taught in connection with Geography in the Elementary Department. In the Academic Department the subjects are taken up as indicated in the course of study. Laboratory work is required of all students of Chemistry and Physics, and the use of the microscope of all

students of Botany and Physiology. It is considered that one or two sciences each thoroughly studied for not less than one year will do more for the pupil's intellectual development than a large amount of superficial work.

In 1913-14 a course in Domestic Science including Hygiene, Household Sanitation and Chemistry of Foods will be offered.

Physical Culture

St. Helen's Hall has a large gymnasium, and a trained teacher is in charge of the gymnasium work. In the Elementary Department there are easy drills several times in the week. In the Academic department each class has two morning periods a week for light work such as marching, club swinging, folk dances, etc., and every pupil is required to be in one afternoon class for either æsthetic dancing or games. An exhibition to which the parents and other friends are invited, is held every spring, at the conclusion of the year's work.

Religious Instruction

All pupils receive instruction in Holy Scripture, Church Catechism and the History of the Church, and attend the daily services in the Chapel of the School. Resident pupils attend service on Sunday morning in one of the city churches.

In 1913-14 a special advanced course in preparation for Church work will be offered.

Special Students

Special students in Music, Art or Elocution may be received as resident, when there is room for them, but the preference will be given to pupils in the regular course. No one will be received as a special student without having first completed a high school course of study or its equivalent. The terms for special students are the same as for regular students.

Course of Study

Elementary Department

FIRST YEAR.

ENGLISH. Reading, Writing, Spelling, Language Lessons, Art-Literature Primer. Folk Lore Primer. Folk Lore First Reader. Art Literature First Reader. Sherman's "Little Folk Lyrics." Bass' Nature Stories.

ARITHMETIC. Combinations to 20.

FRENCH. Conversation.

SECOND YEAR.

ENGLISH. Reading, Writing, Spelling, Language Lessons. Folk Lore Second Reader. Art-Literature Second Reader. McMurry's "Robinson Crusoe."

ARITHMETIC. Nichol's—Book I.

GEOGRAPHY. Sand maps. Pictures and stories of different lands.

FRENCH. Conversation.

THIRD YEAR.

ENGLISH. Reading, Writing, Spelling. Kittredge and Arnold's Mother Tongue, Book I. Art Literature, Third Reader. Cyr's Third Reader. Stevenson's Child's Garden of Verse. Eggleston's "Stories of American Life and Adventure." Carrol's "Alice in Wonderland." Selections.

ARITHMETIC. D. E. Smith's Primary Arithmetic.

GEOGRAPHY. Sand Maps. Map Drawing. Geographical Reader.

FRENCH. Conversation and Reading.

FOURTH YEAR.

ENGLISH. Reading, Writing, Spelling. Kittredge and Arnold's Mother Tongue—Book I. Cyr's Fourth Reader. Longman's Fourth Reader. Kingsley's "Waterbabies." Ruskin's "King of the Golden River." Whittier's Child Life.

ARITHMETIC. Smith's Primary Arithmetic.

GEOGRAPHY. Tarr and McMurry. Leete's Exercises.

HISTORY. Stories from English History.

FRENCH. Conversation and Reading.

FIFTH YEAR.

ENGLISH. Reading, Writing, Spelling, Elocution. The Mother Tongue—Book II. Hawthorne's Wonderbook and Tanglewood Tales. Whittier's Child Life. Church's Story of the Iliad. Selections from Longfellow, Scott, Tennyson, etc.

ARITHMETIC. Smith's Grammar School Arithmetic.

GEOGRAPHY. Tarr and McMurry. Leete's Exercises.

HISTORY. American History. Stories from Ancient History.

FRENCH. Grammar and Reading.

SIXTH YEAR.

ENGLISH. Reading, Writing, Spelling, Elocution. The Mother Tongue—Book II. Irving's "Sketch Book." Hawthorne's "Twice Told Tales." Burrough's "Birds and Bees and Sharp Eyes." Lang's Blue Poetry Book. Selections.

ARITHMETIC. Smith's Grammar School Arithmetic.

GEOGRAPHY. Tarr and McMurry. Leete's Exercises.

HISTORY. American History. Stories from Modern History.

FRENCH. Grammar and Reading.

SEVENTH YEAR.

ENGLISH. Whitney and Lockwood's Grammar, Elocution.

ARITHMETIC. General Review. Metric System.

SCIENCE. Physical Geography.

HISTORY. English History.

FRENCH. Grammar and Reading or German or Latin begun.

IN ALL GRADES. Physical Culture, Sight Singing, Drawing, Painting, Needlework, Nature Study, Bible History, Church History, Catechism.

While a seven years' course of study is provided, there may be special cases in which a child may accomplish the required work in six years. On the other hand, it may more frequently occur that a slow or delicate child will need eight or nine years to cover the same ground. In every case the course must be fitted to the pupil, not the pupil to the course. No pupil may be promoted to the Academic Department without thoroughly accomplishing the required elementary work.

Academic Department

College Preparatory Course.

FIRST YEAR.

WEEKLY PERIODS.

Required Studies—

ENGLISH. Grammar, Composition, Reading.	5
LATIN. D'Ooge's First Book	5
FRENCH. Squair and Fraser's Grammar. Contes et Legendes, Sans Famille.	5
MATHEMATICS. Algebra—Slaught and Lennes.	5
SACRED STUDIES. Bible History.	2
	22

SECOND YEAR.

Required Studies—

ENGLISH. Rhetoric, Composition, English Literature.	5
LATIN. Cæsar, Nepos, Grammar, Prose Composition.	5
FRENCH. Squair and Fraser's Grammar, La Cigale chez les Fourmis. Mon Oncle et Mon Cure.	5
MATHEMATICS. Algebra—C. Smith. Plane Geometry.	5
SACRED STUDIES. Old Testament History.	2
	22

General Course.

FIRST YEAR.

WEEKLY PERIODS.

Required Studies—

ENGLISH. As in College Preparatory Course.	5
HISTORY. English and American, or	5
FRENCH. As in College Preparatory Course.	5
MATHEMATICS. As in College Preparatory Course.	5
SACRED STUDIES. As in College Preparatory Course. And one Elective.	2
<i>Elective Studies—</i>	
ELOCUTION.	2
MUSIC.	2
ART.	2
DOMESTIC ART.	2
	19

SECOND YEAR.

Required Studies—

ENGLISH. As in College Preparatory Course.	5
FRENCH. As in College Preparatory Course.	5
MATHEMATICS. As in College Preparatory Course.	5
SACRED STUDIES. Old Testament History. And one or two Electives.	2
<i>Elective Studies—</i>	
GERMAN. Grammar, Reading.	4
ELOCUTION.	2
MUSIC.	2
ART.	2
DOMESTIC ART.	2
	19 to 21

Academic Department.

College Preparatory Course.

THIRD YEAR.

WEEKLY PERIODS.

Required Studies—

ENGLISH. History of Literature. Composition, Study of English Authors.	5
LATIN. Cicero, Prose Composition.	5
MATHEMATICS. Plane and Solid Geometry.	5
SACRED STUDIES. New Testament History. And one Elective.	2

Elective Studies—

FRENCH. Grammar, Scenes de la Revolution Française, La Canne de Jong, Composition.	5
GREEK. Grammar, Reading	5
GERMAN. Grammar, Guerber No. 1 and 2.	4

21 to 22

FOURTH YEAR.

WEEKLY PERIODS.

Required Studies—

LATIN. Ovid, Vergil, Prosody.	5
HISTORY. Greece and Rome.	5
SACRED STUDIES. Church History. And one or two Electives.	2

Elective Studies—

FRENCH. Composition, Mademoiselle de La Segliere, La Bataille des Dames.	5
GREEK. Xenophon, Prose Composition.	5
GERMAN. Grammar, Imensee, Der Zerbrochene Helm.	4
SCIENCE. Botany or Physics.	5

17 to 22

General Course.

THIRD YEAR.

WEEKLY PERIODS.

Required Studies—

ENGLISH. As in College Preparatory Course.	5
FRENCH. As in College Preparatory Course.	5
MATHEMATICS. Plane and Solid Geometry.	5
SACRED STUDIES. New Testament History. And one or two Electives.	2

Elective Studies—

GERMAN.	4
ELOCUTION.	2
MUSIC.	2
ART.	2
DOMESTIC ART.	2

19 to 21

FOURTH YEAR.

WEEKLY PERIODS.

Required Studies—

ENGLISH. Study of English Authors, Composition.	5
FRENCH. As in College Preparatory Course.	5
HISTORY. Greece and Rome.	5
SACRED STUDIES. Church History. And one Elective.	2

Elective Studies—

SCIENCE. BOTANY. PHYSIOLOGY. DOMESTIC SCIENCE.	5
GERMAN. Grammar, Translation.	4
ELOCUTION.	2
MUSIC.	2
ART.	2

19 to 22

Academic Department.

College Preparatory Course.

FIFTH YEAR.

WEEKLY PERIODS.

<i>Required Studies—</i>	
ENGLISH. Study of English Authors. Composition.	5
MATHEMATICS. Review, Algebra. Geometry.	2
LATIN. Virgil, Sallust.	5
SACRED STUDIES. Church History.	2
And one or two Electives.	
<i>Elective Studies—</i>	
FRENCH. Literature, Classic Reading.	5
GREEK. Homer, Prosody.	4
GERMAN. Grammar, Classic Reading.	4
SCIENCE. Physics or Chemistry.	5

18 to 24

General Course.

FIFTH YEAR.

WEEKLY PERIODS.

<i>Required Studies—</i>	
ENGLISH. History of English Literature 19th Century Authors.	5
HISTORY. Mediæval and Modern History.	5
SACRED STUDIES. Church History.	2
And two Electives.	
<i>Elective Studies—</i>	
FRENCH. Literature, Classic Reading.	5
SCIENCE. Physics or Chemistry or Domestic Science.	5
GERMAN. Harris German Composition. Die Harzreise. Sesenheim Schiller's Ballads, Etc.	4
ELOCUTION.	2
MUSIC.	2
ART.	2

18 to 22

In both courses 20 credits are required for graduation—each credit representing a year's work in the Academic Department, with five weekly recitations—or two years' work with fewer recitations. Gymnasium work, two periods a week is required of all pupils for four years and counts as one credit. No credit will be given for less than two years' work in any language. German may be substituted for French throughout the course. Pupils may enter any class for which they are prepared, but the Diploma of St. Helen's Hall is not given for less than two years' attendance.

College Preparatory.

<i>Required—</i>	
LATIN.	4 or 5
ENGLISH.	4 or 3
MATHEMATICS.	3
SECOND LANGUAGE.	2 or 3
SACRED STUDIES.	2
HISTORY.	1
THIRD LANGUAGE. } Of SCIENCE. } Of HISTORY. }	2 or 3
PHYSICAL CULTURE.	1

20

General Course.

<i>Required—</i>	
ENGLISH.	5
HISTORY.	2
MODERN LANGUAGES.	4
MATHEMATICS.	3
SACRED STUDIES.	2
SCIENCE	1
MUSIC, ART, ELOCUTION OR OTHER ELECTIVES.	2
PHYSICAL CULTURE.	1

20

Collegiate Department

FIRST YEAR.

WEEKLY PERIODS.

Required Studies—

ENGLISH. Review of Rhetoric. Themes. English Literature.	5.
MATHEMATICS. Higher Algebra. Trigonometry. Solid Geometry	5
SACRED STUDIES. General Review of Old and New Testament History and Church History	2
Or, Study of St. John's Gospel	2

Elective Studies—

LATIN. Cicero. De Senectute and De Amicitia. Horace. Selections. Prose Composition

PSYCHOLOGY.

HISTORY OF ART.

GREEK. Language and Literature.

FRENCH. Language and Literature.

GERMAN. Language and Literature.

SECOND YEAR.

Required Studies—

SACRED STUDIES. Course of Church Doctrine and History of the Prayer-Book, or, Study of the Psalms and Isaiah 2

Elective Studies—

ENGLISH. Literature of the seventeenth and eighteenth centuries.

MATHEMATICS. Analytic Geometry.

LATIN. Livy. Tacitus, Selections. Prose Composition.

HISTORY. General, Mediæval and Modern History; or History of England or of the United States.

GREEK. Language and Literature.

FRENCH. Language and Literature.

GERMAN. Language and Literature.

Most of the work in this Department is elective, but to receive a certificate a two years' course, approved by the Sister Superior and amounting to nine credits must be accomplished.

No credit will be given for Elementary work in French or German, or for College Preparatory work in Latin.

Training Course for Church Workers

FIRST YEAR.

Old Testament History and Interpretation, New Testament History and Interpretation, General Church History, Missions, Church Doctrine. The care of the Altar and the making of Altar linen.

SECOND YEAR.

Special studies in the Old Testament, the Psalms, the Prophecies. Special studies in the New Testament, the Gospel of St. John or the Epistles. English and American Church History, History of the Prayerbook, Church Doctrine, Religious Pedagogy, Church Music.

This course is planned for girls who desire to become intelligent church women, properly qualified to work in their own parishes or in missions. To enter upon it a high school course or the equivalent is necessary. Graduates of St. Helen's Hall, who have completed the required course in Sacred studies are prepared to enter upon the second year's work. Others will need two years of serious study, with much side reading.

At the completion of the course a special diploma, signed by the Bishop, will be given.

Elocution and Voice Culture

The aim of the instruction in this department is to grasp and express the thoughts of great minds. Especial attention is paid to the use of the speaking voice and to reading aloud. Recitation and the use of gesture are also taught and exercises in correct breathing and physical culture given.

A certificate will be given at the close of a satisfactory course of two or more years.

Music

The Department of Music comprises instruction in piano, voice, violin, musical theory, elementary harmony, sight singing and history of music. A systematic course in piano, violin or vocal music will be allowed to count for graduation as an elective study in the General course.

Portland offers many opportunities for hearing the best music; during the past year the pupils have attended concerts by Godowsky, Sembrich, Ysaye, Mischa Elman, Ganz, Culp, Maud Powell, Galski and others. Pupils desiring to receive Diplomas in the Music Department must complete a course of study in the Academic Department amounting to 10 credits in History, English and Modern Languages.

Piano Department

In order that pupils may form a comprehensive idea of Pianoforte music they are required to study a repertoire including pieces by the following composers: Bach, Handel, Scarlatti, Mozart, Haydn, Beethoven, Schubert, Schumann, Mendelssohn, Chopin, Liszt,—also compositions by modern composers, Brahms, Grieg, Tschaikowsky, MacDowell, etc. The technical work of the Piano Department is drawn from such sources as Bach, Heller, Czerny, Stasny, Leschetiszky, Kohler, Duvernoy and others.

Candidates for graduation must be able to pass an examination over technical exercises, all forms of scales, arpeggios, double thirds and octaves. At this examination studies by Bach and from Czerny Op. 740, and at least three pieces from memory by different composers will be required, besides a given piece which must be performed after a week's study without aid of the instructors.

Before graduation the pupil is required to give a public recital of works memorized including a concerto and a selection of compositions which shall show skillful execution and thoughtful interpretation.

A diploma will be awarded at the satisfactory completion of the course.

Outline of Pianoforte Course

(In the case of the average pupil who has attained the age of 12 years, the minimum time for completing the work prescribed in each of the following divisions is estimated as two years.)

ELEMENTARY—

Finger exercises, scales, studies, etc. Sonatinas and pieces from Schumann's *Kinderscenen*, Scharwenka's *Album for the Young*, etc.
Elementary theory of music.

INTERMEDIATE—

All forms of technical exercises, scales, arpeggios, double thirds, octaves. Studies by Heller, Czerny and others. Pieces by Mozart, Haydn, Bach, Schubert, Beethoven, etc.
Theory of music: Harmony.

ADVANCED—

Studies by Heller, Czerny, Cramer. Pieces by Bach, Beethoven, Chopin, Schumann, Liszt and modern composers, including one concerto.
Harmony and Harmonic Analysis; Pianoforte Sight-playing; Musical History.

Vocal Department

The aim of the vocal department is the development of the voice by a pure and natural method of tone production. All studies are selected according to the individual needs of the pupil, and songs are taken from the old composers and the best modern music.

All voice pupils will be required to attend the Choral Classes, in which they receive instruction in class singing and sight reading, unless excused by the head of the department.

Candidates for graduation in this department must be able to sing sustained tones, intervals, scales (major, minor and chromatic), the advanced studies of Panofka, Lutgen, Aprile, etc., and songs in Italian, French and English, including simple arias.

They must also have completed the course in Theory, Musical History, Elementary Harmony, Sight-singing, and must be able to play moderately difficult accompaniments.

Before receiving a Diploma the pupil must perform a given piece after one week's study without the aid of the instructor, and must be prepared to give a whole recital in public.

Outline for Vocal Course

ELEMENTARY—

Exercises for breathing, tone production and voice placing.

Simple studies, such as Panofka A. B. C.

First grade songs.

Simple Theory.

Elementary Piano.

INTERMEDIATE—

Vannuccini Exercises for Voice Placing.

Panofka Studies Op. 85 and 81 for Phrasing.

Moderately difficult songs.

Elementary Harmony.

Pianoforte.

ADVANCED—

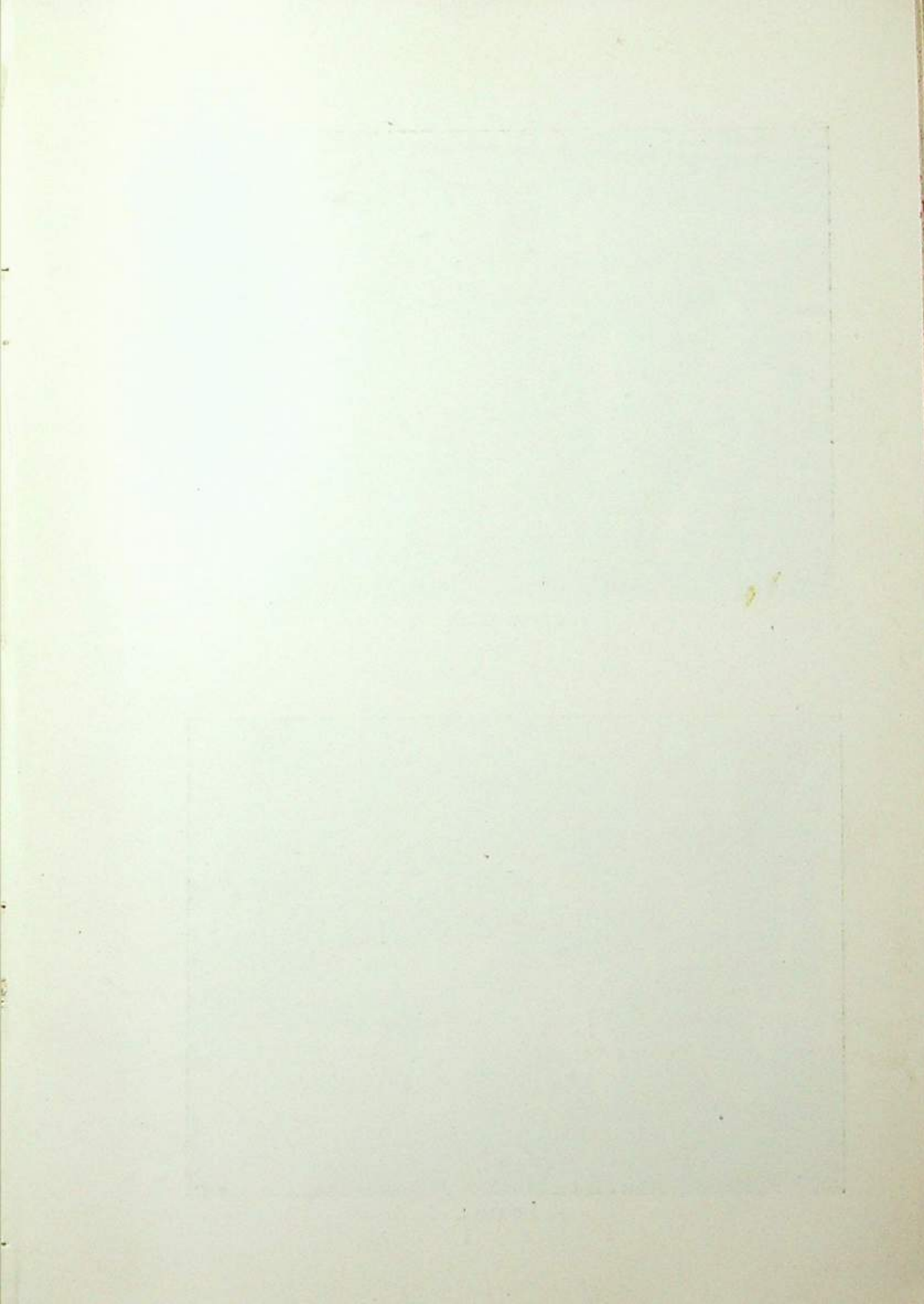
Advanced studies for technique.

Lutgen, Aprile, etc.

Songs and arias from Oratorio and Opera.

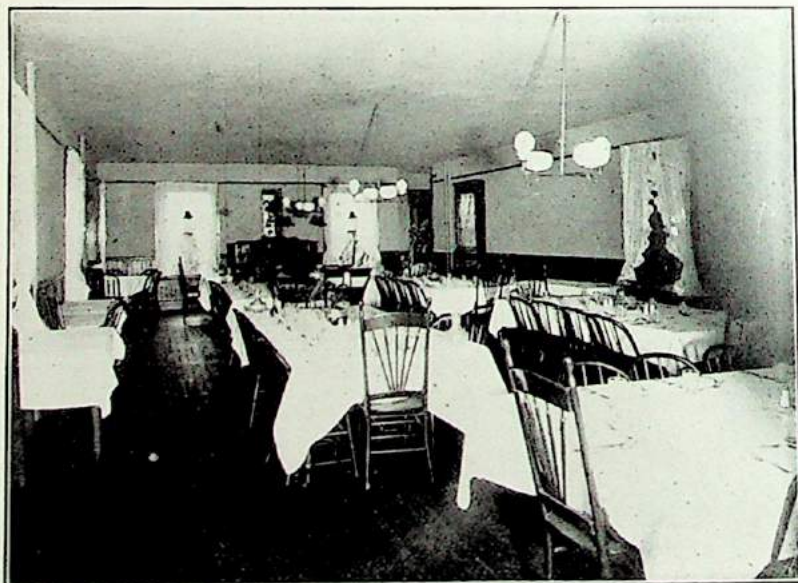
Musical History.

Sight singing.





STUDY HALL



DINING HALL

Art

Art instruction embraces pencil, crayon, charcoal, sepia and India ink, and painting in oil and water colors. The studio is well supplied with casts and still life, and affords every advantage for the serious study of drawing and painting.

Work in the Studio for one period weekly is required of all pupils in the Elementary Department. In the Academic Department the Art Courses are elective, and so arranged as to meet the needs of students who have much or little time. They include problems in theory and practice of design, representation and composition.

The Art History Courses aim to make the pupil familiar with the art of the past, to cultivate a feeling for beauty and develop a power of discrimination that will lead to a keener appreciation and enjoyment of that which is truly great in Art.

Elementary Department

FIRST, SECOND AND THIRD YEARS.

Colored crayon drawings of flowers, leaves, trees, etc. Illustrations of Thanksgiving and Christmas stories. Cut forms, star, holly leaf used for decoration. Color studies in three values.

FOURTH AND FIFTH YEARS.

Drawing of leaves and flowers, pencil and brush, flat washes, arrangements and foreshortening especially considered. Drawing from memory. Three tone drawings. Color scales. Perspective of rectangular and circular objects. Color harmony. Book cover design. Landscape composition in flat tones.

SIXTH AND SEVENTH YEARS.

Sketches of flowers from nature in color. Design of initial letters. Calendar. Costume poses, figures in ac-

tion. Landscape and flower drawing in color. More advanced composition.

Advanced Drawing Class

Drawing in pencil, charcoal, pen and ink, water color or oil from casts and from life. Figure and landscape composition.

All pupils are allowed to be in the Sketch Class. When the weather permits, the class will draw landscapes in black and white or color. On Tuesday there is a Life Class for which a model is engaged; on Saturday morning the pupils pose for each other. Portland possesses an excellent Art Library, which the pupils visit as often as desired.

The Art History Class

ARCHITECTURE

Egyptian	Byzantine
Greek	Saracenic
Roman	Gothic

SCULPTURE

Egyptian	Roman
Assyrian	Mediæval, French
Persian	German, Italian
Phoenician	Modern, Italian, French
Greek	German, English, American

PAINTING

Italian School	Dutch School
French "	German "
Spanish "	English "
Flemish "	American"

The Home

The home life of St. Helen's Hall is that of a well regulated household, in which the general tone is wholesome and happy. A Sister, assisted by the resident nurse, has the care of the pupils' health. Especial attention is paid to manners and bearing, and exercises in the Gymnasium form part of the daily routine. Each girl is required to obtain from her family physician a certificate of physical fitness before taking part in any game (such as basket ball), requiring violent exercise. A riding school near by furnishes horses and groom at a moderate charge for small riding parties. The resident teachers co-operate with the Sisters to make home life attractive and helpful. One evening in each fortnight is given to lectures, musicales and social gatherings in the reception room. Dancing, indoor games and all girlish amusements are encouraged.

A short list of correspondents and visitors is required signed by parent or guardian. Letters addressed to others than those on the list will be forwarded unopened to parents or guardians.

No bills will be paid for pupils nor money advanced to them unless a deposit has been made for that purpose and pupils are not allowed to have running accounts at any store in the city.

A monthly allowance is recommended as tending to give a young girl a proper sense of the value of money and responsibility in the use of it.

During the term no pupil will be allowed to pass a night in town out of the school building except with her parents or near relatives. Pupils may not visit anywhere without the written consent of parents or guardians. They may

receive their friends on Saturday afternoons. Visitors will not be admitted on Sunday except parents and members of the immediate family. Strangers must bring a letter of introduction from parents or guardian. Visitors may not ascend the stairs without permission.

The pupils will be allowed to visit on Saturday those friends in the city whom the parents may designate, provided those friends accompany them to and from the school, and the conduct of the pupil has been so satisfactory that they are entitled to the privilege. Pupils residing in Portland or its immediate vicinity will be allowed once in each month to spend Saturday and Sunday at home.

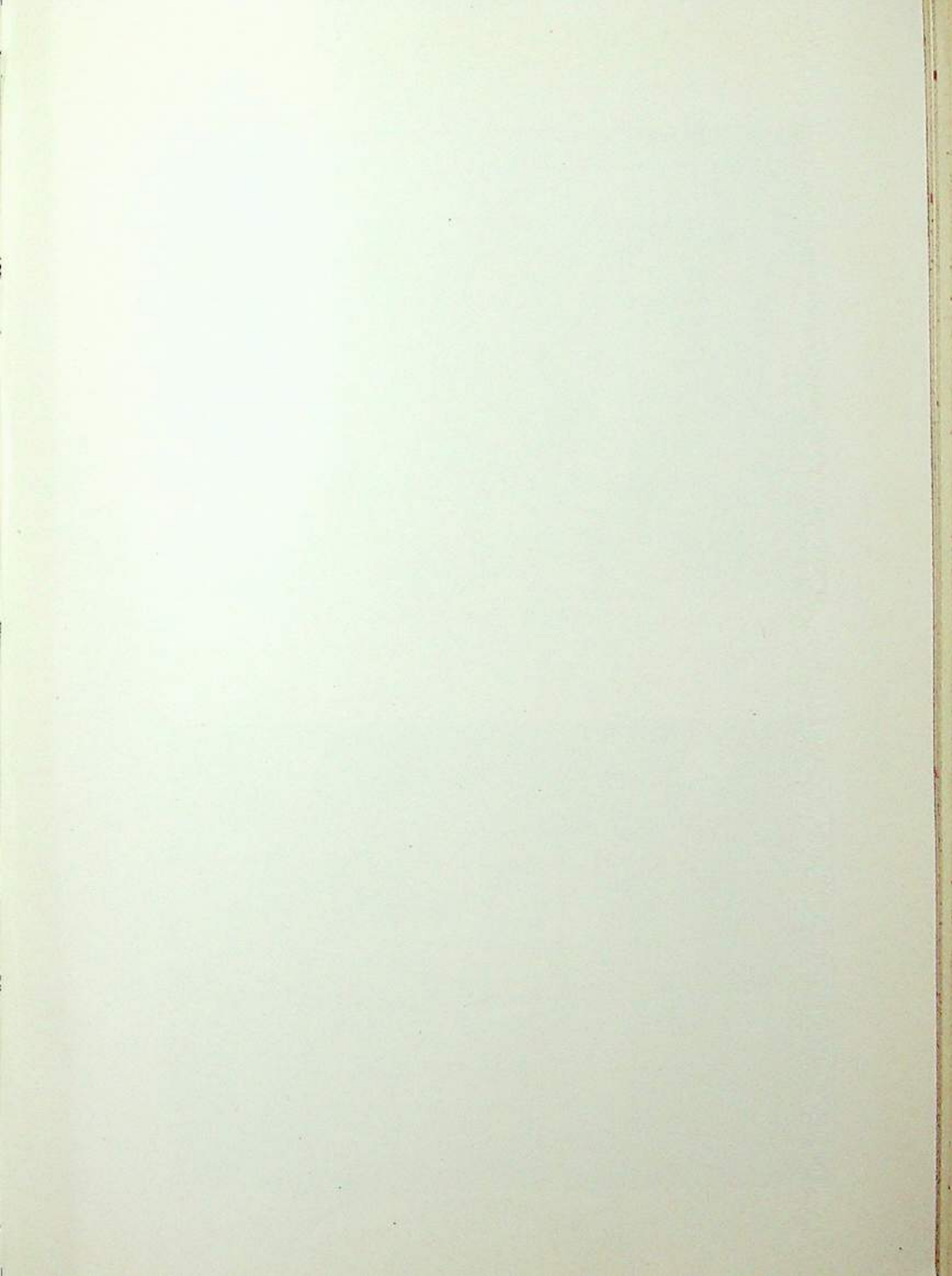
Magazines and telegrams will not be delivered unless approved. Newspapers are not allowed.

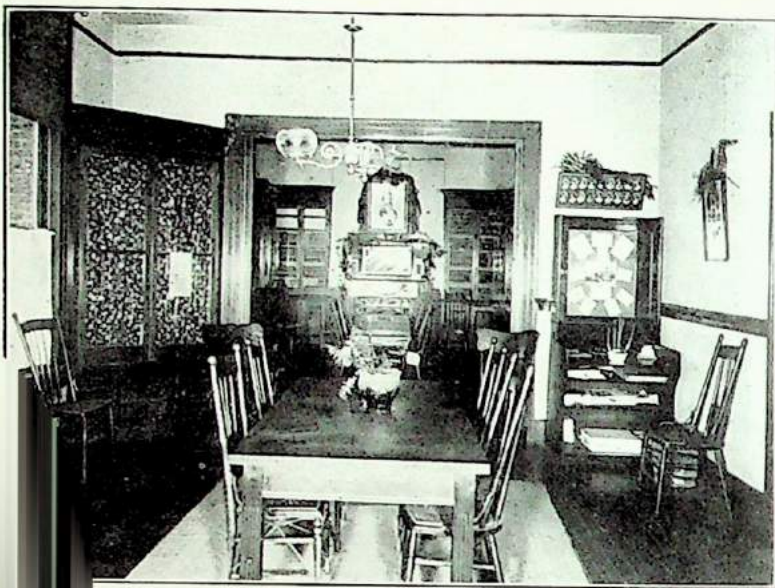
It is requested that no books be brought into the school. All textbooks are provided, and there is sufficient reading matter in the School Library.

Family photographs and a few framed pictures are allowed in the pupils' rooms, but not posters or advertisements.

It is desired that all bedroom decorations be simple hygienic.

Pupils are expected to dress neatly and simply. A plain skirt with blouse waist for school, a cloth suit for Sunday and street wear, an afternoon dress of some light woolen or mixed material and a white muslin dress (high-necked and long sleeved) for musicals will meet all requirements. Neither dresses nor waists of laundered goods are allowed from November 1 to April 1, nor dresses of wash material for the school room at any time. High shoes with low heels are required for outdoor wear. Expensive jewelry is not allowed. All school dresses must be high-necked and long sleeved. Elbow sleeves are allowed on afternoon





SENIORS ROOM AND LIBRARY



ENTRANCE HALL

gowns only. All members of the school dress for dinner. It is requested that all dress-making and dentistry be attended to at home.

Pupils are not allowed to make dressmaking or shopping visits in town or visits to the dentist without a chaperone. A charge of fifty cents an hour will be made for chaperonage.

Requests from parents and all business communications should be sent directly to the Sister Superior and not through the pupil.

The number of resident pupils is limited to fifty. The intention is to have the school family consist of earnest girls who will cheerfully adapt themselves to such regulations as are found necessary. No pupil who shows herself impatient of control, or whose general tone and influence is harmful, can be permitted to remain in the Hall.

School Lectures and Entertainments 1912-1913

October.—Welcome party by the "Old Girls" to the "New Girls."

November.—Dance for resident and day girls in the gymnasium.

Thanksgiving party for the younger children.

Reception for the Bishop and Mrs. Scadding.

Recital by the instructors in the Music Department.

December.—Lecture on Ancient Rome with lantern slides, by Miss Laura G. Eaton.

January.—Christmas Carol Service.

Pupils' Recital (Music Department).

Address by Deaconess Knight on work in Eastern Oregon.

February.—"Concours Francais," in the gymnasium.

Address by Miss Scott, of Tokio, on work in Japan.

First basketball match.

March.—Second basketball match.

Address by Miss Gleason, of the "Consumers' League."

Easter Carol Service.

Third basketball match.

Exhibition of gymnasium work.

April.—Sale of the "Society of the Royal Banner."

May.—Operetta, "The Japanese Girl," given by the Department of Music.

Play, "A King's Daughter," given by the Department of Elocution.

Alumnae reunion.

Class excursions.

June.—Operetta, "The Witch of the Woods," given by the Elementary Department.

French and German plays.

Baccalaureate sermon by Rev. A. A. Morrison, Ph. D.

Commencement concert by the Music Department.

Commencement Evensong and presentation of diplomas by the Bishop of Oregon.

Commencement dance.

Societies

The Society of the Royal Banner—Founded St. Andrews Day, 1904, for the extension of the Kingdom of Christ in Oregon. Under the direction of the Sister Superior. Monthly meetings.

Secret Societies are not allowed in St. Helen's Hall.

The School Paper is the *St. Helen's Hall Quarterly*. It is edited by the Senior Class, assisted by the Instructors in English.

School Honours

First Testimonials will be awarded at the end of each school year to pupils attaining an average mark of 90 per cent in every study, 95 per cent in Order, Punctuality and Attendance, 99 per cent in Conduct.

Second Testimonials will be awarded to those attaining 75 per cent in every study, 90 per cent in Order, Punctuality and Attendance, 95 per cent in Conduct.

The **St. Helen's Hall Cross** is the highest honor in the Resident Department. It is given to any resident pupil who throughout the year is punctual, orderly, courteous and gentle in her daily conduct, and loyal to the school. It was given in 1911 to

Elva Gaskell Lucrece Wood Gladys Holland
Manuella Briggs

Testimonials 1911-1912

FIRST.

Rose Laverner Elsie Oberdorfer Margaret Platt

SECOND.

Marguerite Emerson	Doris Smith	Constance Hyland
Alice Fox	Myla Chambers	Mary Anne Lowell
Adelaide McCune	Linzee King	Evelina Magruder
Ruby Steiwer	Miriam Todd	Amy Robinson
Jane Auterson	Margaret Welch	Mable Tilly
Ruth Stryker	Doris Clark	Eloise Watson
Anna Barker	Margaret Delabarre	

Daily Schedule

Rising Bell,	- - - - -	6:30 A. M.
Breakfast,	- - - - -	7:15 A. M.
Out-Door Exercise,	- - - - - 8:05 to	8:35 A. M.
Assemble in School Rooms,	- - - - -	8:40 A. M.
Chapel,	- - - - -	8:45 A. M.
Study and Recitation,	- - 9:00 A. M. to	1:15 P. M.
Luncheon,	- - - - -	1:15 P. M.
Study and Recitation	- - - - - 2:00 to	2:45 P. M.
Recreation and Exercise,	- - - - - 2:45 to	4:00 P. M.
Dress for Dinner,	- - - - -	4:00 P. M.
Study Hour,	- - - - -	4:45 P. M.
Chapel,	- - - - -	5:45 P. M.
Dinner,	- - - - -	6:00 P. M.
Recreation,	- - - - - 7:00 to	7:30 P. M.
Study Hour,	- - - - - 7:30 to	9:00 P. M.
Lights Out,	- - - - -	9:30 P. M.
Gymnasium Work,	- - - - - 2:00 to	4:00 P. M.
Studio Open Tuesday and Thursday,	2:00 to	4:00 P. M.

Attendance at the gymnasium is required one afternoon in each week.

Day pupils who have finished their recitations are dismissed at 1:15 P. M. if desired.

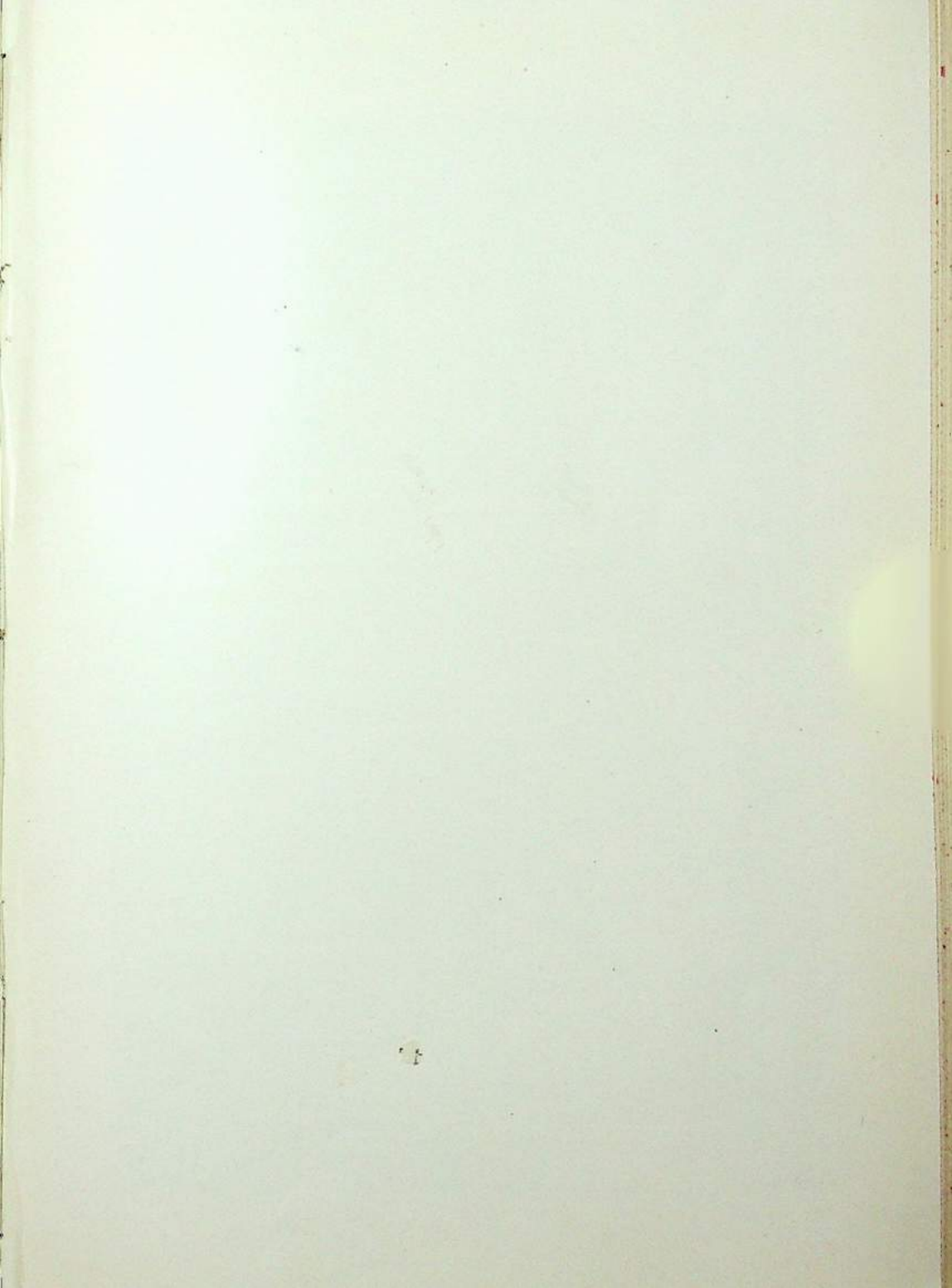
Expenses

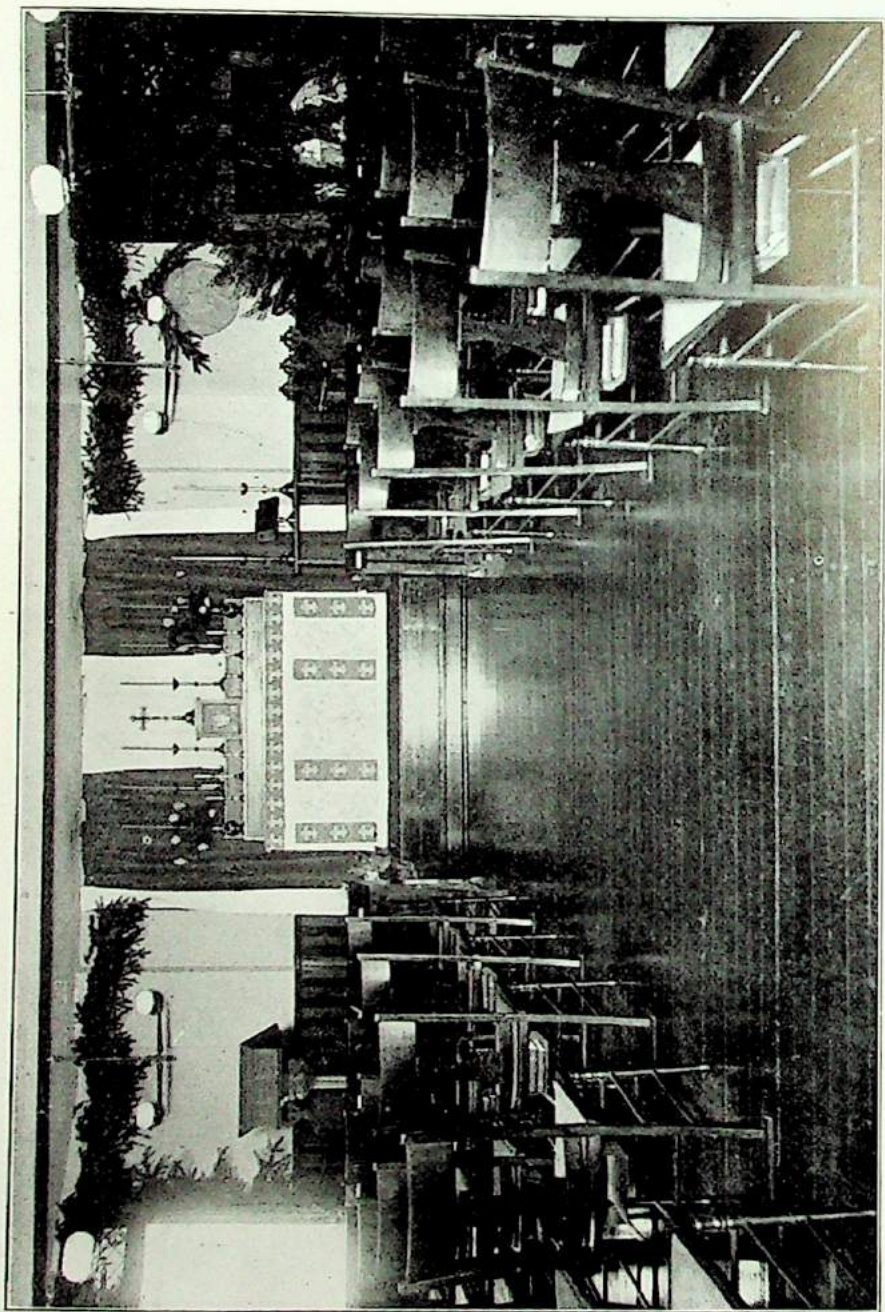
Board, Tuition and Laundry (18 pieces weekly), per year.	\$500.00
Payable with application (advance deposit).....	25.00
Payable September 1	250.00
Payable February 1	250.00
Day Tuition, payable in advance, Sept. 14th and Feb. 1.	
Elementary Department, 1st, 2d and 3d year.....	60.00
" " 4th and 5th years.....	70.00
" " 6th and 7th years.....	80.00
Academic Department, 1st year	100.00
" " 2d, 3d and 4th years.....	120.00
Collegiate Department, per year.....	120.00

Extra Expenses

MUSIC—PIANO—Two lessons a week, including, for resident pupils, the use of the piano for two practice periods daily. Per year.....	80.00
VOCAL MUSIC, including, for resident pupils, use of piano for two practice periods daily. Per year.....	80.00
PIANO OR VOCAL lessons for day pupils, two lessons a week, not including practice. Per year.....	70.00
VIOLIN—At teachers' rates.	
ART—Charcoal, Pen and Ink, Oil or Water Colours, two lessons per week. Per year.....	40.00
ART—Full course, daily lessons. Per year.....	100.00
ELOCUTION—Two private lessons a week to pupils of St. Helen's Hall. Per year.....	60.00
DANCING—Term of ten lessons in class.....	5.00
LABORATORY FEE	3.00
Seat in Church, year.....	5.00
Tutoring, per hour	1.00
Hot Luncheon, day pupils, per week.....	1.00
Graduation Fee (including life membership in the Alumnae Association)	15.00
Library dues	1.00
All bills must be paid before graduation.	

No extra charge is made for Latin, Greek, French or German, for Class Singing, and Physical Culture.





CHAPEL

The advance deposit is required to secure a room before the school opens and is used to meet the expenses of books, music and other school supplies. An account of the same will be rendered at the close of the school year, and any surplus returned.

The laundry work included in the regular charge does not include white skirts or dresses. Coloured underskirts should be provided and dresses or waists of wash material are not allowed to be worn from November 1 to April 1.

All arrangements are made for the entire school year. Pupils withdrawn before the end of the year will be charged in full except in cases of severe illness, when the loss will be equally shared. This is a distinct condition of the contract. The cause of removal must be attested by two physicians, one of whom shall be the attending physician of the school. No deduction is made for occasional absence, nor for absence during the first four weeks. It is assumed that these conditions are accepted when the pupil is entered, this being the custom of all schools in good standing.

No reduction will be made for absence of less than six weeks.

A reduction of ten per cent on board and ordinary tuition is allowed for two sisters. Bills for board and tuition for the second term must be settled before May 1, at the latest, and all incidental accounts must be settled before June 1. When desired pupils may remain at the school during Christmas and Easter vacations and for that time will be charged at the rate of six dollars a week.

Pupils whose homes are not in Portland are required to be resident pupils at the Hall.

List of Pupils

1912-1913

COLLEGIATE DEPARTMENT.

Helen Knickerbocker	Auburn, Wash.
Lenore McGregor	Astoria, Ore.
Jessie Nice	Lutgens, Ore.
Susan Paige	Portland
Roberta Powell	Portland
Harriet Smuckler	Portland— 6

ACADEMIC DEPARTMENT.

SENIOR CLASS.

Jane Auterson	Portland
Anna Barker	Portland
Lorraine Bean	Portland
Ruth Camp	Billings, Mont.
Marguerite Emerson	Eugene, Ore.
Alice Fox	Astoria, Ore.
Olga Freiwald	Portland
Katharine Graham	Portland
Elizabeth Jones	Portland
Doris Smith	Portland
Ruby Steiwer	Jefferson, Ore.
Ruth Stryker	Portland
Constance Taylor	Portland
Katharine Tooker	Portland
Marian Van Horn	Hood River, Ore.
Julie Whitmer	Portland
Bernice McGregor	Astoria, Ore.—17

IV.

Adele Bray	Helena, Mont.
Dorothy Durham	Spokane, Wash.
Esther Fenton	Meridian, Idaho
Constance Fulton	Astoria, Ore.
Alice Gadsby	Portland
Esther Gilpin	Portland
Bina Taylor	Vancouver, B. C.
Elsie Walker	Portland
Adele Yorke	Vancouver, B. C.— 9

III.

Josephine Astredo	San Francisco, Cal.
Myla Chambers	Portland
Alice Dabney	Portland
Evelyn Farrar	Sacramento, Cal.
Eldora Hall	Burns, Ore.
Helen Hall	Portland
Miriam Hagedorn	Portland
Esther Hemstock	Portland
Beryl Hobson	Portland
Martha Hoyt	Portland
Crystal Hyland	Portland
Helen Jeffers	Portland
Helen Kelly	Victoria, B. C.
Linzee King	Portland
Virginia McDonough	Portland
Maxine Meiner	Portland
Ellen Newbegin	Portland
Marian Noon	Portland
Beatrice Stone	Hood River, Ore.
Miriam Todd	Portland
Susan Truby	Portland
Margaret Welch	Portland—22

II.

Isabel Clark	Portland
Dorothy Condon	Seattle, Wash.
Margaret Delabarre	Port Angeles, Wash.
Eileen Eschelman	Portland
Margaret Hagedorn	Portland
Jane Huson	Portland
Winifred Huber	Portland
Constance Hyland	Portland
Gladys Holland	Burns, Ore.
Evelina Magruder	Portland
Modesta Mortensen	Portland
Ruth Oliver	Portland
Elise Oberdorfer	Portland
Margaret Platt	Portland
Bernice Reid	Los Angeles, Cal.
Amy Robinson	Portland
Caroline Simon	Portland
Hortense Smith	Elgin, Ore.
Beatrice Thurston	Wells, Ore.
Mabel Tilly	Portland
Ethel Waite	Sutherlin, Ore.
Eloise Watson	Portland
Helen Wood	Portland
Ruth Wyman	Portland
Gertrude Walther	The Dalles, Ore.
Louisa Muller	Portland—26

I.

Eva Beekman	Portland
Marguerite Bergh	Portland
Lucille Bingham	Portland
Frances Brown	Haines, Ore.

ST. HELEN'S HALL

37

Nadine Caswell	Portland
Dorothy Cannon	Roseburg, Ore.
Pauline Chittenden	Portland
Myrtle Flitner	Portland
Vera Garrett	Portland
Esther Graham	Corvallis, Ore.
Maurine Gates.....	Seattle, Wash.
Bernice Hollingsworth	Portland
Winifred Howell	Seattle, Wash.
Edith Harvey	Portland
Adeline Kendall	Portland
Helen Ketcham	Seattle, Wash.
Nina Kline	Hood River, Ore.
Cecile Lilly	La Grande, Ore.
Jane Loughlin	Portland
Ethel Malpas	Portland
Marian Morgan	Portland
Consuelo MacMillan	Portland
Lillian McDonald	La Grande, Ore.
Mary Muir	Portland
Florence Pace	Wallowa, Ore.
Ruth Randall	Talent, Ore.
Ellen Reidt	Portland
Stella Swirsky	Portland
Gladys Trimble	Portland
Mary Wilson	Portland
Alice Winchester	Portland
Louise Wolff	Portland
Dorine Wyld	Portland
Jeannette Young	Portland—35

SPECIAL STUDENTS.

Pearl Ditto, Music.....	Portland
Jean Kelly, Music.....	Victoria, B. C.

Cora Williamson, Music.....	Regina, B. C.
Mildred Wilson, Music.....	Roseburg, Ore.
Elizabeth Strauss, English.....	Portland
Ida Scoggin, French.....	Portland— 6
<hr/>	
Total Collegiate and Academic.....	121

ELEMENTARY DEPARTMENT.

VII.

Mary Appleby	Portland
Nadine Baker	Portland
Katharine Baum	Portland
Hedwig Bjorklund	Coeur d'Alene, Idaho
Charlotte Breyman	Portland
Caroline Cannon	Portland
Inez Chambers	Portland
Lucille Doerr	Spokane, Wash.
Margaret Elliott	Portland
Marjorie Hobart	Portland
Elizabeth Huber	Portland
Agnes Inks	Portland
Elizabeth Kirby	Portland
Mary Morrison	Portland
Aimee Pernot	Portland
Hazel Philips	Izee, Ore.
Katharine Wheeler	Portland—17

VI.

Olive Baker	Cranbrook, B. C.
Marjorie Campbell	Portland
Marie Jackson	Portland
Dorothy Leadbetter	Portland
Ruth Ferguson	Portland

Cornelia Pipes	Portland
Mary Helen Spalding	Portland
Ruth Thomas	Portland
Anna Wheeler	Portland— 9

IV.

Frances Baker	Portland
Hilda Baum	Portland
Bunnie Elliott	Portland
Edwina Goudey	Portland
Grace Le Page	Portland
Mary Le Roux	Portland
Helen Ross	Portland
Eleanor Simpson	Portland
Margaret Therkelson	Portland
Lucille Vogt	Portland
Georgia Wilsey	Portland
Letitia Wyatt	Portland—12

III.

Phoebe Burroughs	Portland
Beulah Belcher	Portland
Suzanne Caswell	Portland
Elizabeth Furbeck	Portland
Edna Gill	Portland
Elva Mervey	Portland
Elsie Perry	Portland
Jessie Smith	Portland
Marian Scott	Portland— 9

II.

Harriet Breyman	Portland
Margaret Boyer	Portland
Laura Breske	Portland
Helen Ernst	Portland

ST. HELEN'S HALL

Helen Holmes	Portland
Elizabeth Leadbetter	Portland
Frances Spalding	Portland
Mabel Tilly	Portland
Virginia Richards	Portland
Lois Wunder	Portland
Katharine Young	Portland—11

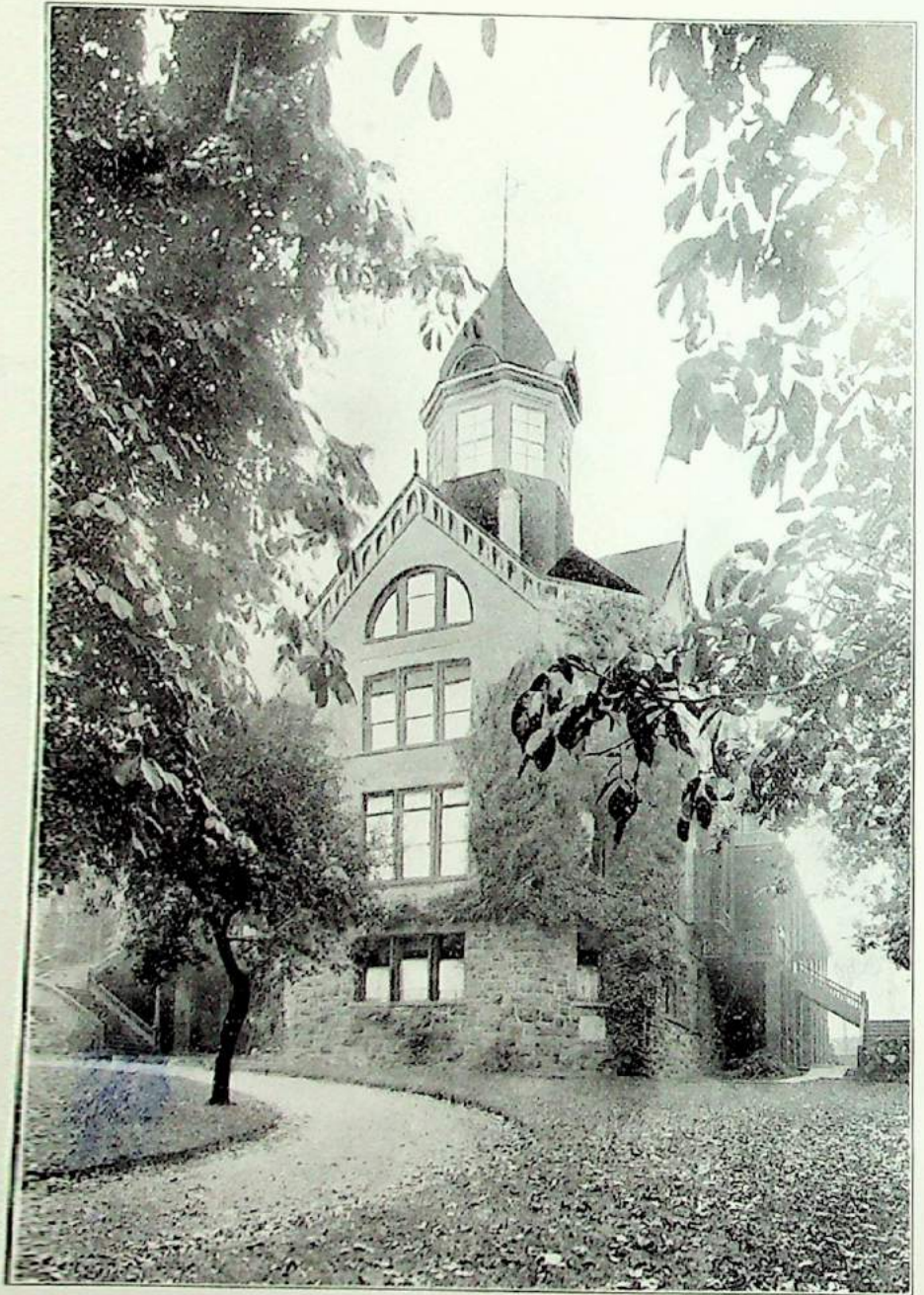
I.

Florence Cavanagh	Portland
Caroline Everding	Portland
Gladys Gardner	Portland
Eleanor Holman	Portland
Elizabeth Meyer	Portland
Dorothy Nesley	Portland— 6

SPECIAL.

Elsa Young, Sewing.....	Portland
Letitia Owens, Music	Portland— 2
Total Elementary	66
Total enrollment	187





ST. HELEN'S HALL, NORTH END

Needs of St. Helen's Hall



A Permanent Endowment Fund.

A Building Fund. A larger site and new buildings will soon be a necessity. The new chapel will be a memorial to Mary B. Rodney, first Principal. For this there is a fund of three thousand dollars, fifteen thousand will be required for the chapel, and gifts toward other buildings will be greatly appreciated.

Increased Scholarship Funds. There are scholarship funds to the amount of \$15,000, but more could be used to the advantage of deserving girls.

The Society of Graduates desire to raise an endowment fund of \$100,000. Subscriptions may be sent to the treasurer, Mrs. Horace Ramsey, 343 Thirteenth street, Portland, Oregon.

Forms of Bequest

I give and bequeath to The Board of Trustees of St. Helen's Hall, a corporation organized under and by virtue of the laws of the State of Oregon, the sum of Dollars to be invested and called the Endowment Fund. The interest of such investment shall be applied to the payment of salaries of teachers of St. Helen's Hall, or such other operating expenses as the Board of Trustees may deem expedient.



I give and bequeath to the Board of Trustees of St. Helen's Hall, a corporation organized and existing under and by virtue of the laws of the State of Oregon, the sum of Dollars, to be invested and called the Building Fund, the accrued interest thereon to be likewise invested from time to time and principal and accrued interest to be expended at the discretion of the Board of Trustees in the erection of new buildings or the addition to present buildings of St. Helen's Hall.



I give and bequeath to the Board of Trustees of St. Helen's Hall, a corporation organized under and by virtue of the laws of the State of Oregon, the sum of Dollars for the endowment of a scholarship to be known as the Scholarship. The principal of the bequest to be safely invested by the Board of Trustees and the income applied to the assistance of deserving students at St. Helen's Hall.

List of Graduates

1872.

SALLY C. CAMPBELL,
MARY H. COUCH,

MARGARET R. GEARHARDT,
ALICE M. HENDERSON,
MARY TAYLOR.

1873.

"The end of learning is to know God."

LAURA P. ADAIR,

IOLA M. BRISTOW,
HORTENSE C. VAN FRIDAGH.

1874.

"Look up."

ANNA H. BRECK,
KATE S. HOLMAN,
SOPHIA HOLMAN,

MARY L. KELLY,
ALLETTA T. LINDSLEY,
MARY R. MORRIS,
MARY C. WILSON.

1875.

HELEN G. BRECK,
VALICIA BROWN,

ELVIRA L. CRELLIN,
ANNIE G. DELINN,
ALICE S. HIGGINS.

1876.

"Festina Lente."

CARRIE CAPLES,
JENNIE CAPLES,

CLARA A. HUMASON,
MARY EMMA LEWIS,
MARY E. STONE.

1877.

"Be what you are."

LUELLA C. CARSON,
HENRIETTA E. FAILING,

NELLY SEELYE,
KATH S. STOREY,
NELLY A. WYGANT.

ST. HELEN'S HALL

1878.

"Semper Sursum."

L. ELLEN A. STEPHENS, ELLA L. WOODS.

1879.

ELLEN STRONG, CAROLINE STRONG.

1880.

*"High be our thoughts."*FRANCES P. BURNSIDE, LIZZIE W. MYRICK.
CLARA C. MUNSON.

1881.

*"Deserve the best."*MARIA F. CLOPTON, IDA K. MCKENNA,
MARGARET GREEN, CLARA E. NORTHRUP,
ELIZABETH IRVING, MARY A. SHINDLER,
SUSAN WHALLEY.

1882.

VIRGINIA H. WHITING.

1883.

"The readiness is all."

CHARLOTTE E. CRAWFORD.

1884.

"Follow, follow, thou shalt win."

ALICE M. CHANCE.

1885.

"Nulla palma sine pulvera."

EMILY C. FAILING.

ST. HELEN'S HALL

45

1886.

"For all eternity."

NELLIE L. CASE,
EUGENIA CUNNINGHAM,
ALICE B. CRAWFORD,

CORNELIA EATON,
JOCELYN FOULKES,
ORONOCO L. RANDALL.

1887.

"True to the kindred points of Heaven and home."

LAURA CAMPBELL,
HENRIETTA H. FAILING,
MARTHA A. HOYT,

JESSIE MURCH,
CLARA M. ROSENBERG,
DORA N. TAYLOR.

1888.

MABEL BECK.

1889.

"Spero."

ELLA HIRCH,

MAY GOLDSMITH.

1890.

"Non stando sed ambulando."

LUCRETIA ALLEN,
ELIZABETH M. CADWELL,
MARY J. CHARMAN,

ELIZABETH A. LAMBERT,
HENRIETTA SINSHEIMER,
JANE WHALLEY.

1891.

MABELLE C. DENT,
CAROLINE W. FLANDERS,

JULIA HAMILTON,
EMMA E. WINTLER.

1892.

"Hodie."

ALICE C. FAILING,
ELLA JORDAN,

HATTIE M. NEWMAN,
KATHRYN WINTLER.

1893.

"Nulla dies sine linea."

LOUISE F. KUEBLI,

CHARLOTTE WHALLEY.

1894.

META ALLEN,
KULLA C. MCFADDEN,

ANNA B. SCOTT,
KATHLEEN SEELEY.

1895.

"Non sibi."

STELLA H. SPEDDEN,

MYRTLE L. SMITH.

1896.

"L'Esperance."

ALICE C. ANDREWS,
IDALLA J. BENSON,
EMMA L. BOOTH,
AMY J. BRATTON,

OCTAVIA DRAKE,
LENA A. EDDY,
EDNA HAIGHT,
L. ESTELLE KILLEN.

1897.

"Per angusta ad augusta."

KATHARINE F. FAILING,
F. BYLIEU LOUNSBURY,
AILEEN WEBBER.

DORCAS MERRILL,
IDA THOMPSON,

AILEEN WEBBER.

1898.

"Nulla vestigia retrorsum."

STELLA ALEXANDER,

MARION BAUER,
FRANCES JACOBS.

1899.

"Vincit qui se vincit."

ROSA JOSEPHSON,
RUTH LOVERIDGE,

CHARLOTTE OHLE,
LILLIAN WOLLENBURG,
NATALIE WOLLENBURG.

1900.

"Facta non verba."

HELEN RAMSDELL,

SALLY POWELL.

ST. HELEN'S HALL

47

1901.

"Viam aut inveniam aut faciam."

THORA POULSEN,
HILDA HENTER,
KATHARINE ARNOLD,

FANNY SWARTZ,
FRANCES LAÑE,
EULA MCCULLY.

1902.

"Praesis aut prosis."

MARION GRAY,

ETHELWYNNE HARRIS,
MURIEL WEATHERDON.

1903.

"Probitas verus honos."

ELIZABETH STEWART.

1904.

"Esse quod esse videris."

SUSAN GENEVIEVE BELLUS,
KATE ESTHER RAMSDELL,
SARA JEAN WINANS,
JOSEPHINE ESTHER SMITH,
GLADYS ATKINS FARRAR,
RENA KUHN,

ELIZABETH BLODGETT LORD,
WILLETA LEETZER,
MABEL ALICE NISSLER,
MIRIAM VAN WATERS,
MARCIA WADE,
MARGARET SOPHIA WALTER.

1905.

"Surge illuminare."

BYRA ABBOTT,
EVA BAILEY,
CLARA BOOT,
HELEN COLDWELL,
ALICE COLLIER,
CATHERINE EMMONS,
GERTRUDE GRAY,
JESSIE GRIMMETT,

DOROTHY LANGFITT,
MYRA LOVERIDGE,
ALICE MCCORMAC,
CLARA MACEWAN,
MARGARET MORRISON,
CARRIE SHORT,
MAUD VAN DUSEN,
WINIFRED VAN DUSEN.

1906.

"Lux et Veritas."

ELIZABETH ARMSTRONG,	HELENA HUGHES,
KATHLEEN ARMSTRONG,	ISABEL HUGHES,
ARLINE DAVIS,	GERTRUDE JONES,
JANET GRAY,	GENEVIEVE SENGSTACKEN.

1907.

"Fortiter, Fideliter, Feliciter."

MARGUERITE CROSBY,	MARY HEWITT,
LOUISE EMMONS,	HAZEL ROBB,
HAZEL FERRIS,	MERCEDES SIMS,
HILDA HAGEDORN,	JUNE STERLING,
JESSIE HALE,	HAZEL TICHENER,
	EVELYN WILSON.

1908.

"Posside Sapientiam."

MARGARET BOOT,	GWENDOLYN LLWYD,
SHANNA CUMMING,	MAUDR MEENACH,
FLORA DAVIS,	ALTA RING,
LEONIDE FLEURY,	ETHEL C. TOWERS,
IONE LAMBERT,	OLIVE WILSON.

1909.

"Labore et Honore."

ELIZABETH BLAIR,	DAISY GREEN,
VIEVE CECIL,	CLARABEL GRIM,
FRANCES CLAY,	STELLA JONES,
MARGARET COLDWELL,	EMMELINH POWELL,
GRACH COLLIER,	LUCY POWELL,
CLAUDIA FLIEDNER,	ELLEN THIELSEN,
DOROTHY GILBERT,	HELEN WHITE,
	ROXANA WHITE.

ST. HELEN'S HALL

49

1910.

"Laetus sorte mea."

MARGARET LESLIE EMMONS,	MARGUERITE ROHSE,
MARGARET W. HEWETT,	ANNA STREIFF,
CLEMENTINE LAMBERT,	MAY WALTHER,
JUANITA MATLOCK,	HELEN T. WATT,
HAZEL MORROW,	HELEN L. WHITNEY.

1911.

"Veritas Vincit."

MARY BLOSSOM,	DOROTHY HUBER,
LORA CUMMING,	FERN HUTCHINSON,
CASSIE HILLER,	WINIFRED LONDON,
	GENE SPENCER.

1912.

"Surgamus et aedificemus."

MANUELLA BRIGGS,	GERALDINE HORN,
ELIZABETH DARCH,	VERNA MENEFFEE,
ELVA GASKELL,	LORRAINE PERCIVAL,
RUTH HALL,	EOLA RICHARDS,
GENEVIEVE HAILEY,	LUCY SIMPSON,
MARIE HANSEN,	EDITH SLUSHER,
OLIVE HARRIS,	ALICE THURSTON,
EVELYN HITCHCOCK,	LUCRECE WOOD.

1913

"Ad Ultimum Summis"

JANE AUTERSON,	ELIZABETH JONES,
ANNA BARKER,	DORIS SMITH,
LORRAINE BEAN,	RUBY STEIWER,
RUTH CAMP,	RUTH STRYKER,
MARGUERITE EMERSON,	CONSTANCE TAYLOR,
ALICE FOX,	KATHARINE TOOKER,
✓ KATHARINE GRAHAM,	MARIAN VAN HORN,
	JULIE WHITMER.

ST. HELEN'S HALL

COLLEGIATE DEPARTMENT.

1909.

LOUISE CECIL,

ADELE DYOTT.

1910.

NELLY LATHROP,

MYRTLE MARGARET SMITH.

1911.

MARY BEL HANCOCK,
HELEN HOLBROOK,CARRIE PAIGE,
LUCY POWELL.

DEPARTMENT OF MUSIC.

1907.

MARY MAUD CARLISLE,

ADA WEST.

1909.

GWENDOLYN LLWYD.

1911.

MARGARET COLDWELL.

1912.

DOROTHY VEDDER.

MANUELLA BRIGGS.

KINDERGARTEN TRAINING CLASS.

1902.

NINA NESBIT,

EDITH HABERSHAM,
RUTH GILMAN.

1903.

AUGUSTA HUMPHREYS,

MARY BOYS.

1904.

BESSIE M. DE BEVOISE,
LILLIAN V. JAMESON,E. MAY PENWILL,
HELEN M. STAFFORD.

ST. HELEN'S HALL

51

1905.

GERTRUDE HUTCHINSON,

ETHEL WALTER.

1906.

ELSIE BACKUS,
KATHARINE GILBERT,
GERTRUDE GILL,

ETHELWYNNE HARRIS,
SARA LEADBETTER,
RACHEL SMITH.

1907.

HELEN BOOTH,
HELEN COLDWELL,
BEULAH DUNCOMB,

MARY MCINTOSH,
JOSEPHINE SCHELL,
PEARL SCHELL.

1908.

CLARA THOMPSON,

JESSIE TUPPER.

1909.

ETHEL BILLINGS,

REBECCA N. HATTON,
MYRTLE STOCK.

1910.

LEONIDE FLEURY,
JESSIE MACDONALD,

CARROLL MCCOLLUM,
ERMINE OWEN.

1911.

HELEN GANNETT.

