



The OES
Belltower

*Oregon Episcopal School Celebrates
125 Years of Academic Excellence*

Autumn 1994

Volume 3

Number 4



Anniversary Edition

A Letter from the Headmaster



ear Friends,

It is a rare privilege to be writing on the occasion of a 125th anniversary. The years are bursting with people and stories, many told in the pages of *The OES Belltower*. Many others are part of the lore and legend that make up the oral history of what we know today as Oregon Episcopal School.

This is a history of lives and their intersections. The School has been a catalyst for growth and change for thousands of young people. Destinies have been shaped on our four different campuses over these years. Leaders in service, industry, education, parenthood, the arts, or the professions have caught spark in our classrooms. Relationships have begun and flourished. Dreams have been fashioned and pursued.

Our alumni do not feel neutral about St. Helens Hall, Bishop Dagwell Hall, or Oregon Episcopal School. I have listened to alumni around the world talk of their days and years here with nostalgia, wistfulness, recognition, and fervor. Clearly, over these years, this School has made a difference.

We are 125 years old this year. You will read about the anniversary celebrations of our heritage in these pages. Here, we honor those who made the OES of today possible, whose vision, courage, industry and faith—and passion—have made the difference. Here you will also read of our future, the harvest of the love and labor that have gone before.

We invite you to join our thanksgiving.

Sincerely,

Peter W. Stevens,
Headmaster



▲ Headmaster Peter Stevens and his wife,
US Humanities teacher Hope Stevens.



OREGON EPISCOPAL SCHOOL

At Oregon Episcopal School, exceptional faculty challenge students of unusual promise to reach their highest potential within a tradition distinguished by love, compassion and trust. Founded in 1869, Oregon Episcopal School is a pre-K through 12, coeducational, independent, college preparatory school in the Episcopal tradition. A full boarding program is offered in grades 9 through 12. Exceptional teachers engage students in small classes that stress participation, creativity and a passion for active learning and living. Within a traditional framework, dynamic programs in the fine and performing arts and athletics encourage student participation. Located on the Pacific Rim, the School emphasizes global studies and an international outlook. Virtually all graduates attend fine colleges. Responsible citizenship, ethics and community service are important at OES — a School where students are encouraged to reach their fullest potential in a loving and caring environment.

Photos Brian Foulkes

Stories Helen Kirschner '85, Carl Reynolds, D. Chuck Mauritz

Editor Helen Kirschner '85

Layout and Design Graphic Solutions

Printer Riddle Press

On the Cover St. Helens Hall Graduating Class of 1881. Standing from left: Mary A. Shindler, Ida K. McKenny, and Margaret Green. Seated from left: Maria Clopton, Susan Whalley, and Elizabeth Irving.

The OES Belltower is published by OREGON EPISCOPAL SCHOOL, 6300 SW Nicol Road, Portland, Oregon 97223. If you would like more information on the School, please call (503) 246-7771.

The 125th Anniversary of Oregon Episcopal School Begins!

AUTUMN
1 9 9 4



▲ A banner-toting airplane was just one of the many surprises during the Opening Day festivities.

Greeted by perfect weather, over 700 students returned to campus with their parents on September 7, 1994, to kick off the 125th Anniversary of Oregon Episcopal School. The School's long history in Portland was honored on this occasion with the presence of SHH, BDH and OES alumni and special guests, including the Royal Rosarians, who planted the OES 125th Anniversary rose in honor of the occasion.

Over 1,000 brass bells were rung in succession by students, parents, alumni, faculty and staff, and a banner-toting airplane proclaimed the anniversary celebration. The 125th Anniversary Song was sung by all, and the fifth grade carried out their traditional bell ringing. This year, there were 125 rings of the bell that has followed the School since its founding in 1869. A reception for alumni and special guests followed in the 125th Commemorative Rose Garden, where the new School rose has been planted.

In keeping with the momentous nature of this special year, this fall edition of *The OES Belltower* is devoted to the memories of our alumni. Reflected in the photos, quoted anecdotes, and excerpts from School publications is the spirit of Oregon Episcopal School which has endured throughout the past 125 years.

OREGON
EPISCOPAL
SCHOOL

Opening Day Kicks Off The 125th!



▲ OES dads wear cool ties! Kobel Haver, father of first grader Samara, and Mark Rosenberg, father of sixth grader Arielle and fourth grader David, compare styles on Opening Day.



▲ Director of Admissions and OES parent Louisa Zendt talks with Bishop Ladehoff before the Opening Day belltower ceremony begins.



▲ A banner proclaiming the arrival of the Class of '95 adorned the doors of St. John's Parish on Opening Day.

▼ OES students don't all feel the same about the first day of school, as shown by first graders Jacob Reisberg and Lucia Foulkes.



▲ OES parent Wendy Hamilton presents guests with brass bells emblazoned with the OES 125th logo.



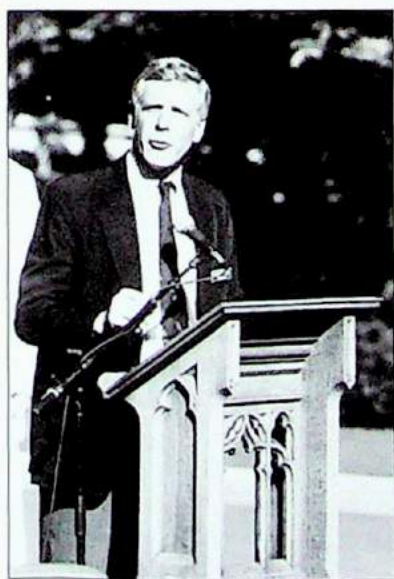
▲ Members of the Opening Day processional wait to take their places in front of the belltower.



▲ First grader Mary Warrington was accompanied by her father, Mark, on Opening Day.



◀ Student representatives from the Lower, Middle and Upper Schools describe their divisions' contribution to the 125th anniversary time capsule, which has been buried behind the belltower.



▲ Headmaster Peter Stevens welcomes everyone back to OES for its 125th year.



▲ The fifth graders carry out the traditional ringing of the bell—125 times, this year—that has followed the School to all of its sites in Portland.



▲ Some of the newest alumni of OES returned to campus for Opening Day. Aaron Smith, Jennifer Thomas, Chris Michlig, Margaret Spring and Heather Laird, all from the Class of 1994, look at the '93-'94 yearbook.



▲ Alumnae and friends of OES served tea at the alumni reception held in the 125th Anniversary Commemorative Rose Garden. Lois Honeycutt, wife of Royal Rosarian prime minister Ed Honeycutt, Mary Jane Owens McNulty '47 JC, Pat Kendall Apperson '48 JC and Mary-Helen Duffy Hansen '45 JC pose in front of the refreshment table, which was adorned with teacups donated to the School by alumni.



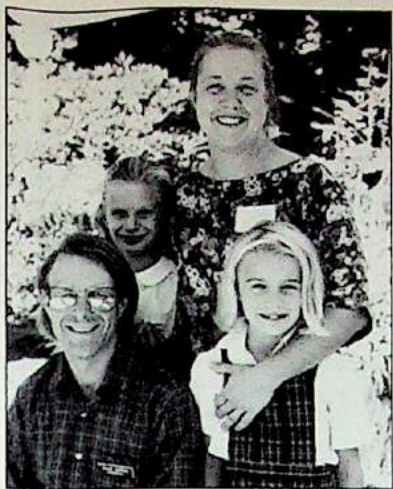
◀ The Royal Rosarians were on hand to officially plant and dedicate the OES 125th Anniversary rose in the newly-planted rose garden, during an alumni reception following the belltower ceremony.



▲ The OES 125th Anniversary Rose was developed by Heirloom Old Garden Roses, in St. Paul, OR, in honor of this important year for the School.



▲ Former St. Helens Hall teacher Sister Margaret Helena attended the Opening Day festivities from New Jersey, accompanied by Sister Mary Lynn. Here, she is greeted by Oregon's Bishop Robert L. Ladehoff as Father Roy Coulter, Dean of the Diocese, looks on.



▲ *The 125th Anniversary Commemorative Rose Garden was designed and planted by Elizabeth von Behren and her husband, OES groundskeeper Allan Lehman. Their daughters are Rebecca and Anna, who are in the fifth and second grade at OES.*



▲ *Recent graduates of OES look at historic memorabilia from the OES archival collection.*



▲ *Carla Sosanya, mother of OES sophomore Tunde, took orders for the OES 125th Anniversary rose during the reception.*



▲ *Suzanne Scoutin Hamann '47 JC and Meridel Prideaux '59, co-chair of the 125th Anniversary Committee, sign the guest book.*



◀ *Norma Fisher Atkins '57 and Virginia Euwer Wolff '55 were among the alumni who attended the rose garden reception on Opening Day.*



▲ *Alice Kimball Trewebella '41 took home an OES 125th Anniversary rose.*

Academics and Educators



▲ *The student body of St. Helens Hall, gathered together in 1891.*

We were fortunate to have such caring and dedicated teachers, like the Latin teacher Miss Evans, Mrs. Shuman and Mrs. Knapp.

Elizabeth Pownall Swindells '34

Gertrude Fariss and her wonderful Shakespeare class held in the "Round Table" room in the Junior College—it was "heaven" to have Gertrude lead that class; also, Carolyn Bowers Collette's Technique of Acting class.

Jane Merriman Gilpin '39 JC

biology class opened windows into fields of study I'd long loved, and it was exciting to draw evolution charts and write essays for him; gentle Miss Rands, and Clarence Slocum and all his vigor and discipline made Spanish intriguing.

Elizabeth Parker Belles '44

Dr. Alice Bahrs, my chemistry teacher, was probably my most endearing instructor. She cultivated my interest in science. Interestingly, she was a practicing M.D. when I was attending Oregon State College.

F. Elise Bede Swan '44 JC



▲ *Ruth Rose Richardson '36, head of the English Department at St. Helens Hall from 1953 to 1971, pictured with a student from St. Helens Hall in the 1960s.*

The small classes, many friends and caring attitude of the staff, many teachers were nice, but physical education teacher Colleen



◀ *A group of captive Lower School students are led through a story by OES 3rd grade teacher Norene Calkins in 1994.*



▲ *Current OES Headmaster Peter W. Stevens studies alongside Lower School students in the 1990s.*

Cook was special because she gave so much extra-curricular time to the students.

Janet Banks '49

I have so many wonderful memories from OES... I have various favorite teachers and classes from which I learned and grew, sometimes without knowing!

Tansy Briggs '89

Seventh and eighth grade teacher Ruth Jackson gave me a world view of art, music and travel, the great places to see plus a life-long memory of those things and appreciation for fine arts.

Gloria Spencer Crowson '49

I thrived on the learning atmosphere of St. Helens Hall and I really can't recall a class I preferred over the rest!

Barbara Jean Freeman Hinman '49

Fr. Dr. Tom Goman had a passion for teaching and life. He was known to shout in joy when one of us showed a momentary brilliance.

Kevin Shilling '86

Ah! Sweet sleep and relaxation—the eighth wonder of the world. Who needs it? You can't sleep, we won't allow it...So just stay up and do that paper or reading or those exercises and you're sure to get A's. And once you have A's, you are on your way to the prestigious college of your choice...So, you see, you really don't need that sleep...

Brian Litzenberger '86, from *The Aardvark*, 1983

There were many favorite teachers, but one activity in particular sticks out in my mind.

We were sophomores in Middle European History class with David Hursty. We were planning a form of diplomacy and I was Serbia, a country I have since learned much about as luck would have it.

Autumn Alexander-Skeen '74

The glorious setting on 13th and Hall, where spring and autumn were unbelievably beautiful, a comfort in those terrible World War II days; the quiet of Study Hall in the handsome library; Paul Beistel's combination English-



▲ Upper School choir members rehearse in 1994.

The Gathering in the Great Hall, Winterim, Black Piet's appearance at the Christmas party, Chapel; Jack O'Brien, my theatre teacher, was the best because of his warmth, love for the theatre and the inspiration he gave me which stays with me until today. The intellectual stimulation that I received at OES enabled me to continue to pursue an education on similar lines after I returned to my home country.

Zeenat Potia, Exchange Student from India '91-'92

All the wonderful, dedicated teachers—Latin with Miss Campbell, who was hard but fair and such a wonderful person, Miss McKirdie's history classes and Mrs. Johnson's science classes.

Nancy Cannon Goodell '54

Staying up all night writing foot-notes for the US history paper and project...

Elizabeth Laun Ursin '79

For my first interview with Miss Jane Allen Saxton I was scared silly, but from the first moment she inspired me with the spirit and goals of the Hall—spirit and goals which have shaped my life.

Joanne Henry Kreutzer '54



▲ In the 1990s, computers are an integral part of the Lower, Middle and Upper School curriculum.



▲ Miss Eleanor Fass, teacher at OES from 1969 to 1985, leads class in the 1980s.

Ruth Rose Richardson: "Three things are unavoidable—you must pay your taxes, you will die and the verb 'to be' never never NEVER takes a direct object."

Sally Bowe Beaton '59

John Hicks: Cool
Dave Hursty: Smart
Roger Nelson: Engaging.
Brent Erensel '74

My two favorite teachers were Miss McKirdie, [who] made history come alive in the way she taught it, and Miss Richardson—I still remember her reading the Canterbury Tales in Middle English.

Patricia M. Clarke Kempf '60



▲ Mrs. Janet Easterday directs a group of budding reporters in her journalism class at St. Helens Hall in 1949.

[I remember] Roger Fitzgerald for his incredible handsomeness, Mrs. Virginia Dowse for her kindness and Mrs. Helga Daret for her wonderful spirit.

Marjorie Anderson Cesolini '71

▼ Young women of St. Helens Hall in Father Greenfield's religion class in 1962.



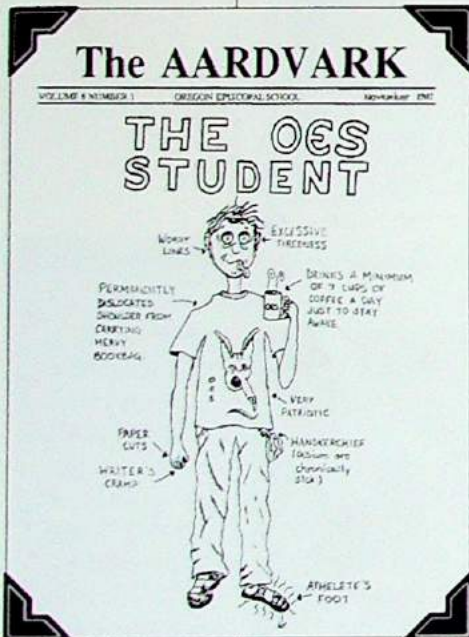
◀ Gertrude Fariss, pictured here (on left) in 1946, directed the efforts of the Junior College of St. Helens Hall from 1932 to 1947 and later served as director of St. Helens Hall from 1954 to 1968.

What is awareness? To become aware is to be reading your biology text and come across this: "The life of a cell depends on the molecular traffic through a membranous layer, the colloidal boundary of a cell..." After underlining it or taking special note of it for the next chapter test which will certainly be coming up, you suddenly realize that billions of cells in your own blood, skin, muscles, etc. are doing exactly what your biology book very clearly explains. You STOP. And you think about it for a moment.

Chuck Reynolds '69,
from *The Hallmark*,
1968

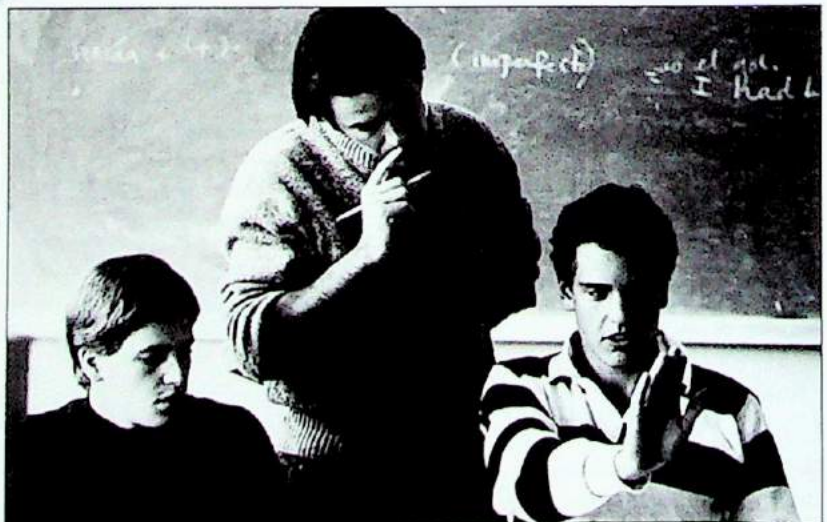


▲ Middle School students participate in the design of the new Middle School facility. The OES Master Plan, introduced in 1994, calls for new and improved facilities on the OES campus.



All the instructors I had were extraordinary: chemistry, math, Latin, English, etc. [I remember] the day students' locker room; the library listening to our student organ player practicing above; bouncing up like corks when an adult entered the classroom! We had a shop class which had to be unique for girls; I still have the little wooden chest I made.

Geneva Summersett Fraser '43



▲ OES Upper School art teacher Jack O'Brien confers with Bruce Hoof (left) and Bill Drinkward (right), both members of the Class of '85.

**Change and Continuity:
Cynthia Doran,
Counseling OES
Students Since 1965**

As the faculty member who currently holds the longest tenure at Oregon Episcopal School, Cynthia Doran gamely enters her twenty-seventh year of teaching and counseling during this 125th anniversary year.

"I don't mind being a historic relic!" she jokes.

Cynthia joined the staff of the School in 1965, when it was still St. Helens Hall for girls. Initially a history, English, and religion teacher for sophomores and juniors, Cynthia filled her current post of college counselor in 1977, and has turned that program into a curriculum staple for OES juniors and seniors.

The college counseling program includes a handbook for OES students and their parents, which Cynthia wrote, and periodic informational meetings, including visits from college admissions officers. Cynthia herself routinely visits colleges and attends National Association of College Admission Counselors and College Board meetings. During Winterim, she holds a one week

introductory program for juniors, called College Decisions, and throughout the academic year there is intensive, one-on-one advising for Seniors before, during and after the college application process.

In an interview with *The OES Belltower* in its Autumn, 1992 issue, Cynthia reflected on the ways in which the School had changed—and remained the same—over the past 25 years since she joined the staff:

OES has become a much more informal place. When Mrs. Fariss walked through the Great Hall 25 years ago, everyone stood up...Uniform regulations were rigid. And 25 years ago, no one would have dreamed of calling me Cynthia. Some of the best things have remained constant. This School has always had a sense of community—almost like a family. OES also has a love of—almost celebrates—the individual... And, I guess finally, we have a respect for learning. It's one of our keystones. We are able to inculcate a love of learning.

Today, Cynthia emphasizes that, like OES, her job as college counselor has evolved.



▲ Cynthia Doran counsels an earnest member of the senior class.

"The emphasis at OES has always been on academic success, and hand-in-hand with that emphasis is the desire for our students to go to what is thought of as a 'great college,'" Cynthia says.

"But I also think that students today understand more than ever that they need to find a good match. They're looking for a college experience that is right for them as individuals."



Sister Agatha Louise, the principal, was my favorite teacher. She was so firm, but so kind. The strict regimentation was only a part of the total experience, but helped me realize the importance of self-discipline. The Sisters were wonderful!

Kirsten Anne Doble, attended SHH Lower School in '40's

[I remember] Ruth Rose Richardson, who inspired me to develop writing talents.

Joanne Henry Kreutzer '54



▲ French teacher Madame Wolfson in the 1950s.



▲ The wetlands area bordering the OES campus was purchased by the School in 1986, providing an ideal outdoor laboratory for Lower, Middle and Upper School students.

Spiritual Traditions



▲ *First graders Jeremy Otta and Terry Fields lead the procession to the Christmas Crib in December 1952.*



▲ *Lower School students gather for morning chapel in 1993.*



▲ *Blue veils were traditionally worn to every chapel service at St. Helens Hall, as pictured on eighth graders in 1946.*

The morning prayer service we had each morning and Sister teaching us a little art as we walked back to our rooms (the long hall was lined with beautiful pictures); we learned a lot from the Sisters—it was a privilege living with them and attending St. Helens Hall.

Lillian Brooke Austin '35

I remember the Sisters going down the hall, with veils flying!

Elizabeth Pownell Swindells '34

► *The Rev. Stephen Schneider blesses the pony of fifth grader Christy Brinegar in fall 1993. The pet blessing ceremony, in honor of St. Francis of Assisi, is an annual tradition for Lower School students at OES.*



Like many of our era, I probably recall the Sisters with special affection, which might surprise them a bit to hear considering the way we sometimes acted up in Chapel.

Gloria Ross Grenfell '44

Watching Miss Saxton mince into chapel as if she had been sent from God!

Nancy Cannon Goodell '54

Wearing a hat and gloves to church; roses that were given out to the graduates; wearing the veil when you forgot your beanie for chapel service; Father Greenfield also holds a special place in my spiritual life; because of him I was very active for a long time in my church.

Patricia M. Clarke Kempf '60

When Sister Superior ordered me to her office, I arrived with quaking legs [but] then she told me that I had a perfect exam in religious studies! The Sisters were all so dear—friends that are still significant after 64 years! I remember talking with Sister Mildred

THE INSTRUCTION in this School will be of the most thorough character; the constant aim being to give a sound and practical education, and to surround the pupils with the influence of a refined Christian home and intercourse. Everything in the power of the Teachers and the Principal will be done to make a cheerful and happy home for the boarding pupils, and a careful oversight will be kept of their conduct and manners.

From the SHH catalog, 1869

Eleanor as we looked out the window. I said "It is sad to see the leaves fall." She said, "But, Muriel, look how beautiful the branches are." True of a lot of things in life.

Muriel Gabriel Heltzel '30

Commencement exercises at Trinity Church, the hymns, Evensong and red roses. . .

Gloria Spencer Crowson '49

I remember sliding into the parlor on our knees, late for morning prayers before breakfast!

Barbara Jean Freeman Hinman '49

I loved Chapel in 1964 when we sang the services in the makeshift chapel.

Nora Brydges McMillan '68



▲ *Members of the Altar Guild prepare the altar appointments for the St. Stephens Cathedral in 1968.*



▲ Lower School acolytes in the 1960s.

The Chapel in the Upper School building holds the most memories for me. It was so quiet and inviting, and I loved the hallways, the high ceilings and the stairs.

Kirsten Anne Doble, attended SHH Lower School in the '40's



▲ The interior of St. Stephen's Chapel in the 1880s, at the original site of St. Helens Hall where Portland's City Hall now stands.

I remember that we had to be absolutely silent from Thursday in the evening until Saturday morning, for Good Friday. If we were successful, we would have a party to celebrate. You can imagine how hard it was at meals, when you had to ask to have the peas passed!

Geraldine Hanny Sargent '35



▲ St. Helens Hall students complete their duties as members of the Altar Guild in 1958.

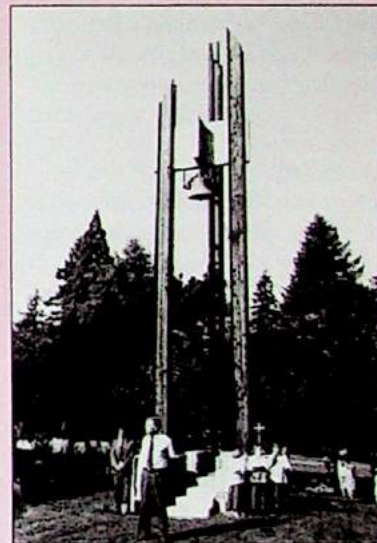
A Spirit of Belonging for 125 years

This is where "We" belong. We belong in a place that holds life's stories both joyful and painful. We belong in a place that remembers those who gave it life. OES is such a place.

In the seven years I have been a part of OES I have never seen this school—this community—look to the future without first taking courage and wisdom from its past. Whether on the playing field, in the classroom, in a faculty or board meeting or in the dorm, there is the constant question that underlies every decision, and the life of this community: "Does what we are doing today honor those who came before us?"

I am pleased to say that it does. I have never heard anyone say "OES used to be such a good school." Sure, the School has changed—it's designed to. Life is supposed to go on. But through the years and all the changes, students, parents, alumni, faculty and staff have continued a tradition of excellence that goes back 125 years.

Today we honor 19 people who have lived that tradition and passed it on to us. I teach



in the Middle School and... Mary Reynolds is among those we remember today. Her granddaughter, Margaret Reynolds, just received the Faculty Award for outstanding scholarship and positive contributions to the OES community.

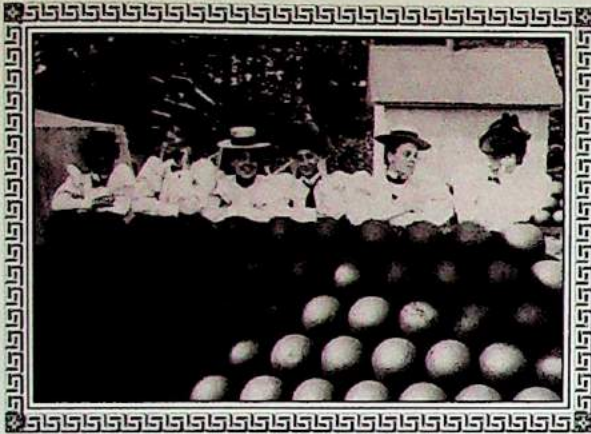
The tradition goes on. The lights of our past show the way for our future.

—Homily delivered by Middle School Chaplain Mike Devenney, Reunion Weekend Chapel Service, 1994



▲ The Rev. Canon Malcolm H. Manson, OES beadmaster from 1982 through 1990.

Extracurricular Activities & Antics



▲ *St. Helens Hall girls visit Battery Russell on a class trip to the Oregon Coast, 1918.*

An outstanding "faux pas" memory was during a Voice and Diction class! I was performing a scene from George Bernard Shaw's *Major Barbara*. The scene was set in the bathroom where the character was "making her toilet"! I had not read the stage directions as well as I should, and proceeded to get up and walk around! According to the author's directions, I was in the bathtub—what a laugh I drew from my classmates!

F. Elise Bede Swan '44 JC

Class outings to Lake Oswego, Neskowin, Mt. Hood; the volleyball and tennis teams.

Barbara Jean Freeman Hinman '49

Rolling the teachers' cars onto Nicol Road and blocking all incoming traffic for April Fool's Day; watching soccer matches on cool fall days; the view from the dorms of the apple trees and the little forest; ski team, only because I wanted to hang out with my beau (but the terror of skiing fast was good for me).

Autumn Alexander-Skeen '74



▲ *Relay team members relax on the sidelines of the Yanagitani Track, 1991.*

► *The Archery Club of 1935 poses on the grounds of St. Helens Hall.*



Skiing on weekends with Helga Daret and Karen Barner—not eating all day long and then each eating 1½ homemade greasy donuts on the way home.

Nancy Cannon Goodell '54

The class precedence: "Do not step on the school crest"; seniors wearing caps and gowns once a week during the last semester.

Joanne Henry Kreutzer '54

Some of my most vivid—even traumatic—memories of The Hall centered around meals in the Great Hall. I remember reading the School's Book of Rules before I started teaching and was terrified at the number of pages devoted just to dining hall decorum... I lived in terror the first few days wondering what hideous faux pas I would commit! I'll never forget the night when...Miss Kleinschmidt

NOVEMBER 19: Evidently Old Man Depression had us in his clutches. The Seniors gave a depression dance for the purpose of raising money. The Hall was most appropriately decorated with patches and placards which seemed to betoken the condition of most of our pockets. Anyway the dance was a success, and all seemed to get their ninety-nine cents worth of pleasure.

From the school calendar in *The Delphic*, 1933

Soccer; the Gazebo; McKlintock's Institution for the Demented; Tiger Hunt; the Girl's Dorm; "The Tree"; Outward Bound and Outdoor School; river trips; Paul Gerhardt.

Brent Erensel '74

Class weekends and Senior Skip Day at my parents beach house; our walks to the concerts from 13th and Hall to the Civic Auditorium as a boarder...

Gloria Spencer Crowson '49

Initiation...I remember one year the girls had to crawl, blindfolded, through flour, mush, and noodles.

Helga Daret, teacher at SHH in '50's, '60's and '70's



◀ *Members of the Court of the 1958 May Fete gather around Queen Nora Binnicker '58.*

Still the Everglade

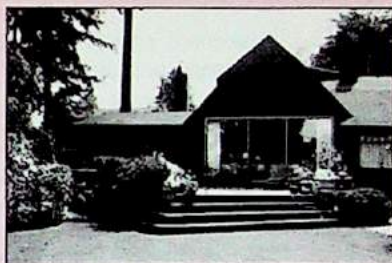
Many St. Helens Hall and Junior College alumnae have fond memories of the leisurely weekends they spent at Everglade, a house on Lake Oswego purchased in 1930 to be used for recreation, including swimming, canoeing, motor boating and tennis.

Appropriately, the Everglade is now owned by an alumna of St. Helens Hall, Shirley Fulton Coan '32, who moved there with her husband and three children in the 1960s. The house remains much the same today as it was in the '30's. In 1950, The Rev. Lansing Kempton purchased Everglade from the Sisters who directed St. Helens Hall, but made only minor changes to the house. Shirley and her husband Ralph have remodeled the house over the years since they bought it, but only under the original roofline.

The dormitory for the girls from St. Helens Hall and the Junior College is now the master bedroom, and the many



Everglade, then and now.



small bathrooms (which "never worked," Shirley laughs) are now a galley kitchen. There

were bedrooms upstairs for the Sisters, which later served as bedrooms for the Coan's children. The Coan's family room now lies where St. Helens Hall girls and the Sisters used to gather for chapel services on Sunday mornings.

Many of the same huge fir trees still surround Everglade, although a grove of about twenty which stood by the lake were cut down by Father Kempton, presumably because they blocked the view.

Shirley, who was a school teacher for many years in West Linn and Lake Oswego, and remains a flourishing watercolor artist, has many memories of her times at Everglade as a student at St. Helens Hall.

"I remember the Sisters used to pull their habits up and tie them behind their backs, to go out in the canoes and motor boat," she laughs. "We had a lot of fun here!"



▲ *Students from St. Helens Hall enjoy their moments away from studying in 1886.*

suddenly landed behind me and announced to my table and several adjoining tables, "Mr. Clarkson, we do not put our elbows on the table."

Don Clarkson, English teacher at BDH, 1960's

When my bra broke at an OES soccer game and I took it off on the field; playing hooky with S.D.K!
Paige Parker Kuni '84

Cheering on our mighty boy athletes at games; ringing the bell; the Great Hall—here we could social-

ize the best, outside of the woods, that is!

Marjorie Anderson Cesolini '71

I was once reprimanded by Miss Saxon (who we secretly called "Mighty Mouse"). I was sitting around a dining hall table

eating donuts with some students. We each helped ourselves to one and began eating. Well, Miss Saxon called me in after lunch, and chided me, "You never take a bite out of a donut—you break it first."

Helga Daret, teacher at SHH in '50s, '60s and '70s



▲ *The 1978 yearbook staff revels in the autumn leaves outside the OES dorms.*

Leaving the grounds to Bush's Drug Store for a Coke—and being severely reprimanded!

Geneva Summerset Fraser '43

I do remember a couple of [pranks] that stood out because they were clever and also simply because they were so rare. My favorite was the Trojan Horse prank when several resident boys sent a large crate with no name on it to the girls' dorm. The dorm mother left the crate in the lounge



▲ A group of equestriennes from St. Helens Hall on their mounts, 1930.

◀ OES students adjust equipment on an outdoor trip, 1990s.

▶ A group of St. Helens Hall Junior College students in a production of "Toys," 1946.



Participation, Top Facilities and Fun: A Winning Combination

In the past twenty years since Athletics Director Kris Van Hatcher '70 first joined the staff at Oregon Episcopal School, its sports program has changed a great deal.

"We've always had strong teams," Kris emphasizes, "but in the past ten years the sports program has really gotten stronger."

Over the past five years, more than 80 OES athletes have received individual recognition including All-League and All-State honors. The girls soccer team won the State Championship in 1993, and the boys track team was the District Champion in 1994. OES fencers have been the State Champions every year since 1988, and both the girls' and boys' tennis teams have won the State Championship for the past two years, with the girls' team taking the singles championship and the boys' winning the doubles championship for the last two years.

The success, Kris says, can be partly attributed to a variety of

facility changes at the School. The new Yanagitani track, donated by OES parents Kazunori and Tei Yanagitani in 1988, the addition of SPARC during the same year, and the improvements to the School's three outdoor soccer fields have given the sports program an extra edge, in both practice and competition.



Since Kris became the head of the program 10 years ago, he has also made a real effort to create a philosophy among his staff which reflects the belief that success in athletics is only part of the equation. Participation and fun, he says, are just as important. He also emphasizes that a great deal of the success of the OES athletic program can be attributed to a staff that follows through on this

philosophy and brings it out in the students who participate.

The "no cut policy" means that as long as students have the desire to play, they can be members of a team and will play on a regular basis, regardless of their level of achievement. OES has had 80% participation over the past ten years, despite the challenge of balancing schoolwork and sports.

"It's got to be difficult," Kris acknowledges, "But I really believe that it makes the kids more organized overall, and gives them more energy."

Another tribute to the success of the athletic program at OES came when four of its coaches—Kris, Coleen Conkey, Mike Devenney and Rich Sherwood—were named Coach of the Year on either the District or State Level during the 1993-'94 school year.

"The bottom line is that OES is blessed with talented kids who are also really intelligent," Kris says. "Kids can get an excellent education at OES, as well as a strong athletic program, where they'll play more and get more individual attention than at other schools."



▲ *St. Helens Hall students from the Ski Group of 1951 pose on Oregon slopes.*

and when everyone was in their rooms, the boy inside broke out and opened the dorm doors to several more boys who promptly partied with the girls!

Don Clarkson, English teacher at BDH, 1960s

The carnival fundraisers, sports with BDH and father-daughter dinner were fun...

Nora Brydges McMillan '68

I remember the novelty of going with the nuns to Lake Oswego retreats.

Elizabeth Parker Belles '44

I remember wearing a white dress in a program of some sort, and being asked to hold the American flag. I was never so honored in my life!

Doris Henningson Harkson '20



▲ *The basketball team of 1933, which was undefeated for six years.*

The Great Hall holds a lot of memories for me; that's where it all happened. [It was] kind of like a comfortable family room with someone always there to shoot the breeze.

Kevin Shilling '86

OES is suffering from an identity crisis. The Falcon has traditionally been our mascot, but recently there has been talk of changing it to the Aardvark. After all, if the mascot represents the School's athletic image, which beast does our athletic prowess more closely resemble, the clumsy Falcon or the noble Aardvark?

From *The Aardvark*, 1982



▲ *Members of the 1993-94 State Championship girls' and boys' tennis teams pose with their trophies. Coaches Mike Devenney (far left) and Coleen Conkey (far right) were both named State Coach of the Year.*



▲ *Doris Harkson '20 holds the American flag during a 1917 flag ceremony.*



▲ *St. Helens Hall girls and their fathers gather together for the 1966 Father-Daughter Banquet.*



Fasting Alliances



▲ *Rose Bardel, who retired in 1994 after teaching at OES for 20 years, with Lower School student Michael Thanbouser.*



▲ *Ross Thompson and Elizabeth Hight, members of OES' Class of 1986, greet each other on campus.*



▲ *Students from St. Helens Hall during the 1880s.*

What I treasure is the unique brother-sister relationships we all had with fellow students and teachers. A time in my life when I learned to appreciate all types of individuals; meetings in the Great Hall; quick runs to Dunkin' Donuts; John Kerslake—hilarious, entertaining and hyperactive; many of us spent all of our breaks at the Gazebo, talking and getting to know each other better.

Elizabeth Laun Ursin '79

There are many memories, mostly of the friendships, and shall we say "youthful exuberance" there. Further, it was "in" and not looked-down-on to study and work hard to achieve.

Gloria Ross Grenfell '44

Sitting on the grass near the Greek Theater, enjoying the sun with whoever had that period free (or decided to make it free that day!)

Shauna Cooper '89

After I graduated, I missed the opportunities for forming and developing friendships. The close contact provided many hours of discussions, fun times and support and encouragement!

Nora Brydges McMillan '68

I miss the people who I met and became friends with and I know that no matter how much I try it'll never be the same again.

Zeenat Potia, Exchange Student from India, 1991-1992

"For the next few days, you don't have to think," quotes Ed Rubovits at a senior meeting just prior to the exciting days before graduation. Seniors, tanned from rafting and relieved to be finished, floated through a blur of photo sessions, awards, rehearsals, presentations and visiting family members....After years of "agreeing to disagree" (another accurate quote from Ed), they all finally united in the common purpose of attaining a small green folder with their name inside.

From the Legend Delpbic, 1993



▲ *Elvira Crellin Cartwright, Class of 1875, and Maria Clopton Jackson, Class of 1881, photographed with unidentified children at the 1948 reunion of St. Helens Hall.*



▲ OES Lower School students pause long enough for a quick photograph during the 1980's.



▲ Katie Adams, Heather Laird and Tracy Sheetz graduated in 1994, having attended OES for 14, 13, and 12 years respectively.

Out of Bosnia

Refugee leaves war behind — with a little help from her friends

By AUTUMN ALEXANDER

Of the Herald-Republic

Tanja Horvat is about three weeks late for the 20th reunion of her Portland high-school class. But that she escaped from war-torn Sarajevo at all and is due to arrive in the Oregon city today is a dream come true for her former classmates.

Horvat, who graduated from Oregon Episcopal School in 1974 as an exchange student from what was then Yugoslavia, became a Bosnian war refugee who fled to Munich, Germany, with her young daughter.

But after a coast-to-coast effort involving her former classmates, exchange parents, and the high school's current administrators, Horvat, 38, and her daughter Ivana, 6, will begin a new life in the United States.



▲ Tanya Vasiljevic Horvat '74 on an Upper School camping trip during her senior year at OES.

◀ Excerpt from the July 18, 1994 article in the Yakima Herald-Republic, written by alumna Autumn Alexander-Skeen '74. Tanya Vasiljevic Horvat '74 has joined the staff of Oregon Episcopal School as a laboratory assistant in the science department.



▲ OES third graders present Kathy Gross with a handmade quilt on the occasion of her retirement from teaching after 30 years at OES, in 1994.

◀ The graduates of 1958 gather on the steps of St. Helens Hall.



▲ *The Class of 1991 parades around the courtyard of Trinity Episcopal Church.*

▶ *The first coeducational class of Oregon Episcopal School, in Senior Park on the Nicol Road campus in 1972.*



On May 12, 1994, faculty member Jack O'Brien spoke to students, faculty, staff and families as the speaker for the annual Mount Hood Memorial Lecture. Following are excerpts from his talk:



We are assembled here today to remember and reflect upon the lives of nine individuals who are an important and vital part of the OES community. Their names and memory will forever be a part of this institution and of our lives.

Fr. Tom Goman
Erin O'Leary
Patrick McGinnis

Marian Horwell
Tasha Amy
Richard Haeder

Susan McClave
Eric Sandvick
Alison Litzenberger

Eight years have passed since that terrible month of May and I am forgetting things I thought at that time would be impossible to ever forget. That period was, without question, one of the most significant events in my life, and, I know, for many of you as well...

The students we remember today were a lot like you in their interests, their passions, their highs and lows, their constant struggle to find out who they were...My father died that same year and I spoke at his funeral about those lost on Mt. Hood and those struggling to cope with survival. I said that I have come to realize that life was like a book and that the number of pages one had was not as important as the quality of each page. I made a promise to try and fill each page of my book with something of quality...

In closing I would like to mention two people who survived the tragic accident...Brinton Clark sends word through her parents that she is using her drawing skills to illustrate health posters for the inhabitants of a tiny village in Ghana where she works trying to improve the quality of life for people so desperate for care and hope...Giles [Thompson] dropped into the office the other day with his fiancée Marie Lorraine and their 5 month old son Lewis. As we sat talking, catching up on all the years, I looked at Lewis and I thought to myself that this is what this special day is all about. It is about remembering the past for the promises made, for the lessons learned, and it is for looking to the future.

ST. HELEN'S HALL

Portland, Oregon

DRESS REGULATIONS (FOR THE BOARDING DEPARTMENT)

FOR THE STREET:

- A suit or dress for Church or town.
- Two or three blouses, (silk, voile or linen.)
- A long heavy coat, also coat for rough wear if desired.
- Two simple hats.
- One pair of oxfords, pumps, or high shoes.
- One pair of overshoes or galoshes and one umbrella.

After November 1st every girl is required to have for street wear either high shoes, spats, or woolen stockings.

FOR DINNER AND HOUSE:

- Short sleeves allowed, but no sleeveless dresses may be worn in school.
- 2 after- School uniform in crepe de chine, white or Copenhagen blue, with noon dresses colored tie must be worn at dinner.
- also One or two pairs of slippers or pumps.
- One or two party dresses with suitable stockings and slippers. (Short sleeves allowed, but no sleeveless dresses.)
- Plain colored silk stockings may be worn after school hours. (These are not necessary.)
- A white dress or uniform for Commencement.
- Only light-colored powder may be brought into the school.
- Socks may not be worn by girls of the Upper School.
- One light-weight sweater, school colors, white, tan, or white and school colors combined.
- All articles of clothing must be plainly marked with the full name in woven name tapes which can be obtained at Olds, Wortman & King's, Portland, Oregon.

FOR SCHOOL AND SPORTS:

- All sleeves must be elbow or full length.
- Two navy blue, tan, or dark brown woolen dresses—St. Helen's Hall School regulation dress, middie style.
- Two Copenhagen blue, light blue, tan or white linen or cotton dresses of the above style for warm weather—not silk.
- One heavy sweater, school colors (dark blue or red) or white or tan—not striped or figured. One sport hat.
- One pair heavy oxfords or shoes (low heels), black or brown.
- Stockings: plain cotton, lisle, or woolen, dark blue (light blue or white with the light dress), brown, black, or tan—not silk.
- Ties may be school colors (dark blue or red) or white or tan for the brown or blue dresses.

FOR GYMNASIUM:

- Two pairs of bloomers (dark blue or black.)
 - Two or three white, Copenhagen blue or dark blue serge middie blouses
 - One pair of high tennis shoes. One pair of gymnasium shoes.
 - One or two silk ties, school colors (dark blue or red.)
- All of the above list is not necessary, but is the maximum amount allowed. The Official School dress may be secured at Olds, Wortman & King's, Portland, Oregon. Design and sample sent on request.

AS I GAZE AT YOUR IVIED walls, I think of a great many things. You have come to mean a great deal to me. I can never thank you enough for the opportunities you have opened to me. I can attend a class which interests me, taught by a person I respect more as a friend than as an overseer. My silent worship in Chapel brings peace into my heart and gives me strength. As I walk down the hills with the laughing girls I have a wonderful sense of belonging...And it comes to me suddenly that I love St. Helens Hall.

from
The Delphic,
1948

◀ The first graduating class of Bishop Dagwell Hall gathers for commencement exercises in Senior Park, 1967.



▲ Graduates of the Class of 1942 were honored on the occasion of their fiftieth reunion at the 1992 graduation of OES.

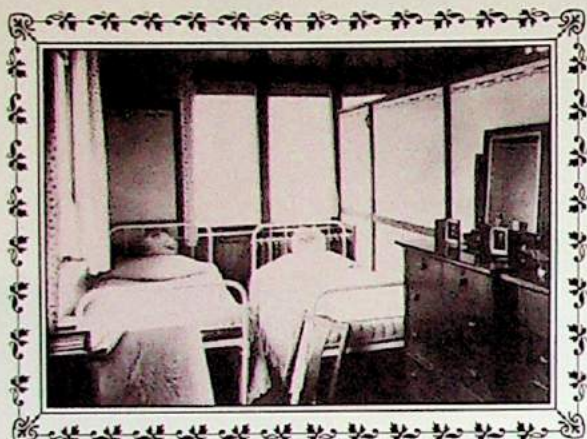


▲ Students from St. Helens Hall, pictured on the grounds of the original site of the School where Portland's City Hall now stands.



▲ The Class of 1890.

Boarding Life From Scott Hall to Jackson House



▲ A typical dorm room in Morris Hall, at St. Helens Hall in the 1920s.

I won't miss the Saturday morning "neatness check" of my room and the darning lesson each week!

Lillian Brooke Austin '35

I miss the camaraderie the most and battling to get into the showers and baths the least...

Joanne Henry Kreutzer '54

I was not only a two-year boarder but I returned as a non-student for a year while I attended practical nursing school; the times most difficult were most of the time—it was hard being away from my family, [but] I was glad and gratified for the opportunity and experiences the Hall offered.

Nancy Mooers Holman '56



▲ Dorm students from St. Helens Hall gather in the residence ball in 1965.

After I graduated I missed being a part of the OES dorm family. Being an international student, initially I had to struggle with being so far away from home and my friends, but before I knew it I had a strong support system at the OES dorms...I miss our marathon movie sessions and the discussions in the dorm parents' apartments...I miss my room with the tall french windows in the girls' dorm.

Zeenat Potia, Exchange Student from India, 1991-1992

I remember the last night of the school year when several boys found a snake and put it in Norman's [Norman Frink '70] bed. We all hung around the lounge that night waiting for his reaction.



▲ Cousins and OES dorm students Retna Wulandari-Surya '94 and Fredy Surya '93 pose for a photograph during a residence ball dinner.

Nothing. The next morning there was never a comment, and he just packed and moved out with the rest of the kids. It was months later during dorm redecorating that workmen moved out his bed and found the dried remains.

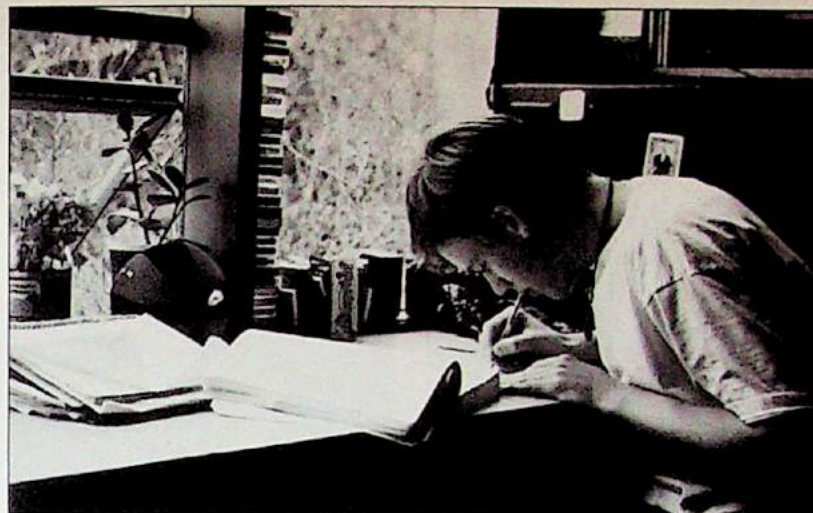
Don Clarkson, English teacher at BDH, 1960s

I remember popcorn balls sold in the dorms; fire drills in the middle of the night and tearing out our curlers so no one would laugh; learning how to live with others and to get up, washed and dressed in 7 1/2 minutes!

Marjorie Anderson Cesolini '71

I remember the nuns would come down the halls ringing a bell very loudly to wake us up in the morning. If we didn't immediately throw back the covers on our beds, we got what was called an order mark. If we left out a pair of slippers, we got an order mark for each slipper—not one for the pair! One night after we got in bed I peered over the partition in the bedroom [the beds were in cubicles, with only a partial wall partition] to giggle and talk with my dormmates. Sister came in with a flashlight and caught me in the act. For my misbehavior I received a conduct mark, and I believe it took 10 order marks to make a conduct mark. Although I don't remember my punishment, if it was cleaning classrooms I must have been busy!

Geraldine Hanny Sargent '35



▲ Toby Menely '94 studies in his dorm room.

IN ADDITION to the ordinary supply of good, plain, underclothing, each pupil should bring a dressing gown, two Balmoral skirts, (heavy and light), two black alpaca aprons, umbrella, waterproof cloak, overshoes, napkin ring, two yards of carpet for the alcove, and a clothes-bag. White petticoats will not be allowed in the wash from October to May. It is especially requested that underclothing be without ruffles or puffs.

From the SHH
Catalog,
1870



I remember that World War II put a decided crimp in our activities. I boarded the last 5 months of my senior year and the activities were rather dull! We—four of us, because we were seniors—had a great view north as we lived in the old building, upstairs by the Sisters [in] their little cubicles where they lived.

Geneva Summersett Fraser '43

◀ May Sopbonpanich '92, a dorm student from Thailand, unpacks for the new year.

The day that President Kennedy was shot, we were all brought into Scadding Hall. Mrs. Farris talked to us and I noticed that she was wearing black. I looked around and saw that Mrs. Christensen, the librarian, was also in a black dress. Then they sent us up to Chapel, and as I walked in I saw Mrs. Paige, our math teacher, in black. I always thought that was so strange—all of them got up that morning and put on black, as if they already knew.

Susie Kasper '65



▲ Relaxing in the Junior College lounge during the 1940s.



▲ OES international students Dwijaya Surya and Ni Sopbonpanich at their graduation in 1990.



▲ Dormmates at St. Helens Hall prepare for their classes, 1945.



▲ International dorm students gather on the steps of Rodney House on the Nicol Road campus, in 1983.

One of my most embarrassing memories is the night rumor had it that several boys were out in the woods smoking cigarettes, so all four dorm masters rushed into the rainy darkness tripping down different paths in the forest trying to catch the criminals. We could hear them always just ahead, but of course we never found them. I laugh now to see myself and the others dripping wet, scratched from the bushes, collapsing back at the dorms probably only moments after the culprits had returned to their rooms...

Don Clarkson, English Teacher at BDH, 1960s

Probably the dorms hold the most memories for me. I was in what is now called Jackson House for 3 years. I lived there, did my homework there, snuck out at night from there and formed lasting friendships there.

Nora Brydges McMillan '68

SITUATED ALONG APPLE TREE LANE is the "humble" domicile of the "Seniors Great." Residing within are fourteen Seniors, three Juniors, one persevering housemother and a dog. Busy is the telephone line from BDH. Activities range from bull sessions at 1 a.m. on colleges to "come-as-you-are-mattress-throws." Always before a big test you'll hear voices late at night confidently saying, "If I don't know it by now, I never will." And then you hear a 5 o'clock alarm!

Chris Biebe '67,
from
The Nickelodean

As a boarder, Saturdays were very special days for which we were, on our honor, able to walk to town for lunch and shopping—UNESCORTED!

Susanne Ehrhardt Malone '39



◀ *Moving in, 1984*

Welcome to the Dorms!

Over the years since the School opened its doors on September 6, 1869, OES has enrolled boarding students from all over the country and the world. With more than half of the 1994-95 boarding population from African, Asian and European countries, OES dorm students and their "dorm parents" have entered the School's 125th year as a truly multicultural community.

Art Horst, new director of residence, feels good about internationalism at OES. The Wesleyan and Columbia University Teacher's College graduate, who attended an independent school himself and later taught for years at Deerfield Academy in Massachusetts, feels that students get a clearer picture of themselves and the rest of the world when they can learn about different cultures in a living situation.

At OES, there is the attempt to match each international student with an American student in a room, with the belief that this broadens each student's global perspective every day. Throughout the year there are programs, dinners and events that capitalize on the diversity of the students' backgrounds, and help foster the sense of an international community.

Art also emphasizes that one of the most resounding qualities of OES is the truly extraordinary nature of the faculty.

"For a young faculty member, the deep sense of commitment in the OES faculty is a wonderful thing to see," he says.

OES and its boarding community are blessed with a staff of committed professionals, all of whom will be teaching in addition to their duties in the dorms. Martha Horst, Art's wife, ran a dorm at Northfield Mount Herman in Massachusetts, with a student population very similar to that at OES. Japanese teacher Rich Sherwood and his wife Christa have moved into the dorms this year with their sons Bobby and Mason. Assistant Director of Admissions John Capen has returned for his third year as a

teach biology and anatomy. Lukie and Jonathon Wells will be living in Morris House as dorm parents and plan to lead several camping and cultural trips throughout the year.

Students from Fairbanks, Alaska, to Sewicky, PA., and fifteen other countries are living and learning in the dorms, and some of them are part of the new prefect system in the dorms. Now in its second year, this leadership program involves eight boarding students who have been selected by the dorm parents for the cooperative effort of "managing" the dormitories. Some of their responsibilities include assigning and monitoring student job

duties, assisting dorm parents with study hall, handing out "strikes" and dorm restrictions for violations of minor dorm rules, and participating in Peer Support, a guidance program provided by OES counselors.

Art Horst feels that this system is very positive,

because it gives dorm students some ownership of what goes on in the dorms on a day-to-day basis. He also emphasizes that the program, although young, is self-perpetuating: if the kids have a good experience with the prefects, this makes them want to become prefects themselves.

"These kids are our pioneers, and they have a big responsibility!" he says.



▲ *The 1993-1994 OES boarding community gathers outside Rodney House.*

dorm parent, and continues to concentrate much of his recruitment schedule on potential additions to the boarding program.

LS counselor Imogene Hollis is spending her second year in the dorms, and Matt Sipple (son of Peter Sipple, former OES headmaster) returns to the staff of dorm parents, and will serve as US yearbook advisor in addition to other substitute teaching duties. New to the dorms is Diana Kornet, who recently taught in San Francisco after graduating from Dartmouth College. She will





▲ Lydia Reynolds '62 SHH



▲ Rebecca Reynolds '67 SHH



▲ Chuck Reynolds '69 BDH;
Former OES faculty member;
Current OES Parent

125 years ago...



Fall 1994 signalled the beginning of the 125th anniversary of Oregon Episcopal School. Throughout the past century and a quarter, the loyalty of the School's former students, faculty, staff, parents and extended families has remained true, as a tribute to the strength of its academics and to the spirit within its walls.

One of the finest examples of this allegiance has been displayed over the past five decades by the Reynolds family. All four children of Carl and Mary Reynolds were enrolled in and graduated from the School during the '50s, '60s and '70s. Carl Reynolds and his father were both faculty members at St. Helens Hall.

Now, a new generation of Reynolds are attending Oregon Episcopal School. Lower and Middle School students Mackenzie and Margaret Reynolds are the children of Chuck Reynolds '70 BDH and his wife, Chris. Chuck was, himself, a member of the faculty of Oregon Episcopal School after graduating from Bishop Dagwell Hall.

Sadly, Mary Reynolds passed away on April 13, 1994, and will be missed by the

entire OES community. For this issue of The OES Belltower, Carl Reynolds has written a story of the beginnings of their family's involvement with the School. The "second chapter" will follow in the spring edition of the magazine.



When my youngest daughter, Kathy, was graduated from the OES Upper School in 1971, my wife Mary and I calculated that our four children had been involved in over 50 years of education at St. Helens Hall, Bishop Dagwell Hall and Oregon Episcopal School! How did this happen, and what brought about such loyalty?



▲ Carl Reynolds,
former parent and
faculty member,
and grandparent of
current LS student
Mackenzie and MS
student Margaret.

I will have to start out by saying that it was my wife Mary who got me involved. It was she who was searching for a pre-school for our second oldest daughter, Becky, and discovered the St. Helens Hall pre-school on the old downtown campus at 13th and Hall Street. At this time our oldest daughter, Lydia, was attending a public school on the East side of Portland, and Mary had joined their PTA. Mary became aware that she was having problems in her class. We were about to move to the West side of town, and decided to try our daughter out in the 4th grade at St. Helens Hall.



▲ Kathy Reynolds '71



▲ Margaret Reynolds, OES Seventh Grader; Daughter of Christine and Chuck Reynolds '69 BDH



▲ Mackenzie Reynolds, OES Fourth Grader; Son of Christine and Chuck Reynolds '69 BDH

There, her teacher noticed at once that Lydia seemed to have trouble seeing. She would come to the front of the room to sharpen a pencil, in order to see what was on the blackboard. The teacher suggested that we have her eyes examined, and we were shocked to find that she couldn't read the big E on the eye chart!

With proper glasses, the whole world became clearer for Lydia. The value of the small classes, personal attention and very caring teachers was dramatically evident to us. We soon found that this was characteristic of the School. Mary quickly became an active parent, attending meetings, joining work parties and learning about the School.

One of the things we learned early on was that the School was in a very precarious financial condition. When Mary and I became involved in 1953, Gertrude Fariss had been asked to take over as the head of the School. She had taught there her-

self as an English teacher, and then had been appointed the head of St. Helens Hall Junior College for 15 years. After the Junior College was closed in 1947 (which she deeply regretted), there was a period of uncertain leadership, until Mrs. Fariss was brought back to take charge of St. Helens Hall in 1954.

She had the challenging task of maintaining the School's high academic standards, small classes, and high moral and spiritual reputation with a most inadequate budget. Mrs. Fariss, by this time, had excellent connections with the academic world, and a talent for finding dedicated and highly qualified teachers who were willing or able to teach for embarrassingly low salaries. This was possible, of course, because the teaching conditions were so favorable, but it was not a healthy situation, and one of which Mrs. Fariss was acutely aware.

Enrollment was always a critical problem. The boarding department was financially the strongest branch of the School. St. Helens Hall had always been a boarding school, one of the few still available in the Pacific Northwest. Parents with girls from remote locations all over the West sought it out. The Upper School was hard put to find space for those wanting to enroll. There was more room for day students, however, and the problem was that of making sure that the School only admitted students who were qualified.

This Mrs. Fariss did with rigorous protection of the School's academic standards. She was very good at suggesting positive alternatives to parents whose children did not meet the School's requirements. As Mary and I became more familiar with the operation of the School, we realized it was worth all of the support we could give it.

The rising financial pressure had resulted in many neglected aspects of the physical plant. The front entrance area of the School had become overgrown and unsightly. The rose garden had disappeared amid tall grass, bushes and overgrown trees.



▲ Mary and Carl Reynolds (left and middle) in the 1950s.



▲ *Carl and his father Charles Reynolds, who was also a faculty member at the School, clean up the front entrance of SHH with help from Rebecca (Class of 1967 SHH) and Chuck (Class of '70 BDH).*

My father, a professor of sociology at Stanford University, had recently retired and returned to Portland where he had grown up. He and I undertook to clean up the School's front entrance. We felled a number of trees, while Mary stood in the street to stop any traffic as one of the larger ones came down (I do not remember that we had any permit to do what we were doing!). We cleaned out up the area and had George Otten, a

landscape architect working on our own property, do some planting around the entrance leading up from the street to the front entrance door. That fall, the traditional Old Girl-New Girl Tea was held in the greatly improved front yard of the School.

Across 13th Street from the main buildings, the Pre-School was relocating to the lower part of the old Multnomah Athletic Club wooden building, the upper part of which was being torn down. Parent work parties were called for, and Mary and I joined many others in cleaning, painting, and laying tile on the floors.

Much *esprit de corps* was generated by those work parties. A number of parents were able to donate materials, or ask others to do so. Elizabeth Wright was the head of the Pre-School at that time, and we built a children's tree house in her honor. Another needed item, a covered play area for Lower School children, was created at this time.

A more threatening matter of this era of rejuvenation was the need to meet the requirements of the fire marshal, who was threatening to close the School. By this time Mary was a member of the Board of Trustees, so we knew the full story of the School's financial distress, and how real the threat of being closed actually was.

It was unthinkable that the School be closed, and the necessary funds to prevent this from happening were raised. In fact, a number of fundraising activities were launched by the Board and a group of active and committed parents. One was an annual hobby and antique show, which eventually evolved into the Country Fair.

Another crisis that came up was of a different nature. Just as the School was about to begin a new academic year, Miss McKirdie, the Upper School's acclaimed history teacher, became seriously ill and had to take the entire year off. Mrs. Fariss was in a real dilemma about how to replace her, and the upshot was that my father and I undertook to teach her classes. I was at that time teaching an introductory course in the history of Western Art and Architecture at Portland State College, and it was not hard for me to take over the Ancient and Medieval history course. My father, as an experienced lecturer in sociology, took over the modern European History course. We simply had to keep ahead of the students' assignments, and managed to do so!

All of these experiences gave Mary and me an intimate knowledge of the School—its history, traditions, finances and workings. Above all, it gave us a great respect for Mrs. Fariss and her staff and the high quality of the teachers she had assembled. There is a spirit about a school of this kind that makes one feel that there are few things more worthwhile that one can support. That is why we were ready to face a new and more grave threat to the future of the School in 1964, when we learned that a freeway was being planned to run directly through the property we had worked so hard to improve.

That, however, is another story.



Look for the rest of the Reynolds' story in the spring edition of The OES Belltower!



▲ *Mary and Carl Reynolds with their son Chuck Reynolds '70 BDH, in the 1990s. Chuck was also a faculty member at OES and is the father of LS student Mackenzie and MS student Margaret.*

THE MUSTARD SEED

Annual Report of Giving



The Class of '26 parades on their graduation day.

"... verily I say unto you, if you had faith as a grain of mustard seed you shall say unto that mountain remove hence to yonder place and it shall remove; and nothing shall be impossible unto you." Matthew 17, verse 20

Oregon Episcopal School

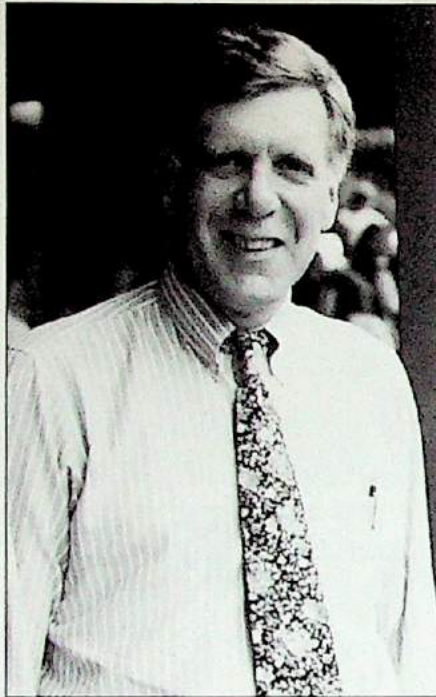
HEADMASTER'S REPORT

Dear Friends,

This Mustard Seed shares with you a record of the School's health as we stand proudly, ready to take bows in celebration of our 125th Anniversary. In these pages, we bear witness to the service and generosity of friends during 1993-94, squarely in the tradition that is a hallmark of our years.

1993-94 was a year of extraordinary faith in and support for Oregon Episcopal School. We achieved a record-breaking OES Fund. We concluded the best auction in the School's history, in support of our faculty and staff. We began securing funds to make the visionary dreams of the Master Plan come alive. Our enrollment of just under 700 students met our strategic goals for the year. We have poured more attention into our physical plant. And we have continued growing our endowment and other reserves to provide protection for the future.

I add my admiration and thanks to Board President Elisabeth Lyon's tributes to our superb volunteers, with whom we have flourished. And I particularly applaud our faculty, who are, as Elisabeth boasts, the heart of our School. The quality of their lives at OES and their dedication to children exemplify our 125-year tradition of teaching and learning.



▲ Peter Stevens, Headmaster

We are ever mindful of your care, thoughts, and support. You help give us the strength to be the School you love. Thank you.

Sincerely,

Peter W. Stevens
Headmaster

Oregon Episcopal School Board of Trustees 1993-1994

The Rt. Rev. Robert L. Ladehoff,
Chairman

Elisabeth Lyon,
President

Christine Kitchel,
Vice President

Jack Spring,
Treasurer

Paul Schlesinger,
Secretary

Charles Adams

Peter Bechen

Marty Brantley

The Very Rev. C. Roy Coulter

Harriett Dixon

Wayne Drinkward

Bob Durst

Sean Gilronan

Betty Hedberg

The Rev. Lucy Houser

The Rev. Robert Morrison

David Pratt

Katherine Sotka

Dale Stewart

Sydney Waskey

Peter Stevens,
Headmaster

Anne Thanouser,
Chair, Volunteers' Common Link

Sean Kuni '81,
Alumni Association President

REPORT FROM THE PRESIDENT OF THE BOARD

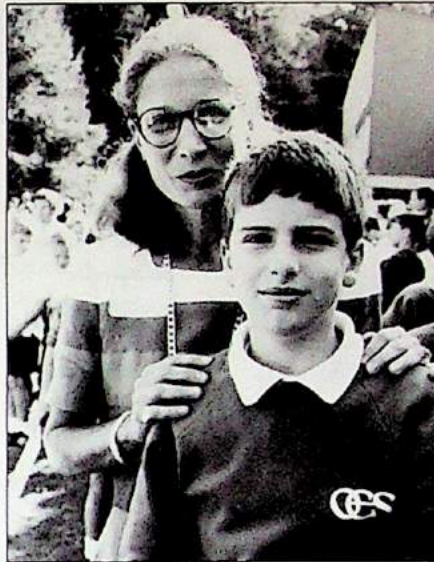
Dear Friends,

Now that the 124th year of Oregon Episcopal School has ended, and we have begun the commemorative 125th year, I want to share with you the state of our School and the work of some individuals who have helped to make it such a strong institution. The Mustard Seed provides the opportunity to not only report to you but also to say thank you. The successes of the last year are due to the efforts and the generosity of many people.

Financially OES is in excellent health. In the past year all external debt has been eliminated, the endowment has increased and the budget has been well managed. Prudent planning has permitted increases in the maintenance account and monies for the purchase and expanded use of computers.

Interest in attending OES is strong. Our classes and our "wait pools" at all grade levels are filled, and by talented young people. After thoughtful discussion, the Board decided to continue the enrollment at the current level and not expand the number of classes or the class size. This decision was made based on the nature of our programs and the desire to maintain their excellence.

During the past year, the Board approved a new Master Plan for the OES campus. This outlines the physical requirements of our School, which are needed to insure our excellence into the 21st century. Subsequently, the Buildings and Grounds Committee, chaired by Dale Stewart, retained architects who prepared schematic designs for a new Middle School and a substantially renovated Upper School. These plans are based on the programmatic needs of each division and were



▲ Board President Elisabeth L. Lyon and her son, OES fifth grader Baker, on Opening Day 1994.

developed in conjunction with the faculty. Implementation of the new Master Plan is the largest undertaking by OES, since our School moved to the current campus in 1964!

The participation of volunteers over the past year was exceptional. Anne Thanouser and the Volunteers' Common Link organized many hours of volunteer commitment in all three divisions of the School. Wendy Hamilton and the creative Auction Committee raised a record-setting \$117,000! And we all will long remember that evening and the fun of being "Wild Things!" With the talented leadership of Pat Karamanos, the 1993-94 OES Fund reached a new high and exceeded \$331,000! Sean Kuni '81 and the Alumni Association planned numerous events, which brought even more alumni in touch with current life of the School. OES now has a school store, the inspiration and work of parents led by Darlene Kaempf. And thanks to the 125th Anniversary Committee, co-chaired by Sheryl Acheson and Meridel

Prideaux '59, our celebration year is filled with very special occasions.

To our faculty I want to express my great appreciation. They are the heart of our School. Many of the successes of the past year are due to the commitment, work and leadership of both our faculty and our administration. I want to thank our Head, Peter Stevens, both for his management of ongoing operations and his vision and planning for our School's future. His three able division heads: Anne Cass, Charyl Cathey and Harvey Zendt, in addition to the Director of Development, Sue Nicol, and Director of Admissions, Louisa Zendt, have worked tirelessly.

My colleagues on the Board of Trustees have been diligent and thoughtful participants in the discussion and conclusion of numerous issues this past year. In particular, I want to express my appreciation to the Executive Committee. The Right Rev. Robert L. Ladehoff, Sean Gilronan, Chris Kitchel, Jack Spring and Paul Schlesinger have provided great wisdom. This past year the Drinkward Award, which acknowledges outstanding leadership, was given to trustee Peter Bechen. He has served the Board in many capacities including Treasurer and Chair of the OES Pacific Rim Council.

And to you, the friends of Oregon Episcopal School, I want to say a very special thank you. Our students and we are fortunate for your continuing support and interest.

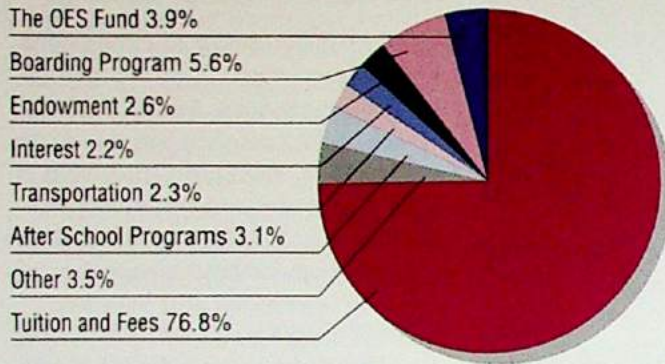
Sincerely,

Elisabeth L. Lyon

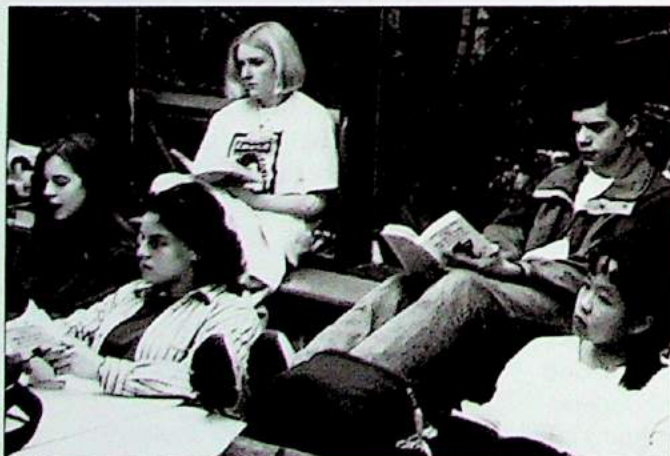
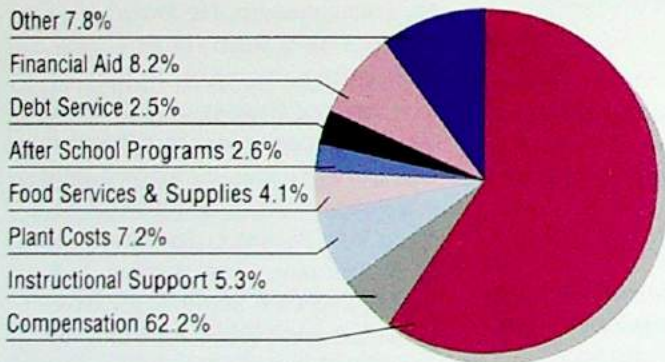
Elisabeth L. Lyon
President, Board of Trustees

CONTRIBUTIONS TO OES

Income: \$7,700,311



Expenses: \$7,694,857



▲ Upper School students in English class.

SUMMARY OF UNRESTRICTED GIFTS—THE OES FUND

SOURCE	DONORS	OES FUND
Alumni	384	55,460
Current Parents	423	189,388
Past Parents	100	30,087
Grandparents	72	11,502
Staff/Faculty	100	3,306
Other Friends	42	6,061
Corporations	17	5,900
Foundations	10	29,636
Total (unrestricted)	1,148	\$331,340

SUMMARY OF RESTRICTED GIFTS—ENDOWMENT, CAPITAL & PROGRAMS

ENDOWMENT	
Scholarship	25,161
E. E. Ford	26,312
Other	50
MASTER PLAN	
MS Schematics	78,385
MS Design Phase	2,079
MS Construction	300
CAPITAL GIFTS	
SPARC/Fencing	1,667
Development Program	12,500
RESTRICTED FOR OPERATIONS	
Financial Aid	3,500
Residence Dept.	5,000
Wetlands Video	2,950
Other	11,679
SPECIAL FUNDRAISING PROGRAMS	
Auction	116,803
Bookfair	2,500
Wreath Sale	11,818

*Unaudited figures

BENEFACTORS

Oregon Episcopal School is fortunate to have the generous support of the following donors, each of whom made gifts to the School during the past year which totalled \$2,500 or more. Because of their gracious support, OES can continue to make necessary improvements to the campus, support our wonderful faculty, and build the endowment.

Anonymous	S.S. Johnson Foundation
Mr. & Mrs. Charles A. Adams	Wayne & Joan Kuni
Adams Foundation	Elisabeth & Peter Lyon
Peter & Missy Bechen	James A. & Fannie E. Malarkey Foundation
Kay & Marty Brantley	Metro
Estate of Spencer R. Collins	Mr. & Mrs. Jae Kyu Park
Cecil & Sally Drinkward	Mrs. Cynthia Coats Railton
Mr. & Mrs. Lee T. Dulin	Tom & Susan Robinson
Drs. Woodruff & Annie English	Mr. & Mrs. Chai Sophonpanich
Mr. Brent B. Erensel	The Sisters of St. John Baptist
Henry Failing Fund	Stephen & Carole Thomas
Mrs. Robert T. Foote	Mrs. J.A. Warren
James & Marilyn Frank	Mr. & Mrs. Gunther Weiss
Ted & Diane Freres	Jill & Ted Welsh
Ms. Susan L. Howell	Dr. Richard & Jana Westlund
Alan & Suzanne James	



▲ Wendy Hamilton and Peter and Missy Bechen enjoyed the revelry at the 1993-94 *Where the Wild Things Are* Auction.



▲ OES parents Kay and Marty Brantley.

OES ENDOWMENT FUNDS

Endowed Faculty Chairs

	1993	6/30/94
	Allocation	Market Value
Beatrice L. Gerlinger Endowed Chair in Mathematics	25,120	550,625
Winnigstad Chair in the Physical Sciences	17,032	373,352
TOTAL Endowed Chairs	42,152	923,977

Endowed Scholarships

Anonymous	1,488	32,723
Katherine Graham Barbey Scholarship Fund	8,309	182,131
Barclay Ball-McCall Scholarship	9,412	206,322
John C. Bechen Memorial Scholarship Fund	728	15,963
Spencer R. Collins Scholarship Fund	46,600	1,025,755
Louise Donaldson Memorial Scholarship	1,556	34,109
Gertrude Houk & Cris Fariss Scholarship Fund	692	15,176
Edward E. Ford Scholarship Fund	1,913	41,924
Paul Gerhardt Memorial Scholarship	5,921	129,790
Melba Byrom Hess Scholarship	20,246	443,789
Jane Hiller Endowed Scholarship Fund	4,339	95,122
Jack S. Howard Scholarship Fund	895	19,613
Samuel S. Johnson Foundation Scholarship	1,532	33,588
Barbara Hirschi Neely Memorial Scholarship	8,737	191,513
OES Endowment	8,787	192,664
Reader's Digest Endowed Scholarship Fund	2,913	63,849
Betty Lou Roberts Endowment	1,713	37,542
St. Helens Hall Endowment	6,244	136,882
David Sellers Memorial Scholarship	990	21,690
Louise Washburn Trust	1,057	23,169
TOTAL Endowed Scholarships	134,072	2,943,314

Endowed Funds

OES Memorial	Art Experience	1,667	36,763
Ruth Rose Richardson Memorial Fund	English Dept.	1,719	37,686
T.J. Kempton Endowment	Coaching Salaries	435	9,528
Faculty Enrichment Endowment Fund	Faculty Endowment	1,430	31,343
Bernice Bean Endowment	Guest Artist	116	2,548
Learning Skills Dev./Grover Fund	LS Teacher Training	1,486	32,579
Music/Economics Faculty Endowment	Music/Economic Salaries	4,288	93,985
Board Designated Endowment	Scholarships	5,624	123,274
J. Milne Manson	Student Award	29	630
Benjamin D. Dagwell Endowment	Teacher Retirement Benefits	6,973	152,851
Edward E. Ford Endowment Fund	Faculty Development	9,813	271,492
TOTAL Restricted Endowments		33,580	792,679
TOTAL ALL ENDOWMENTS		209,804	4,659,970

GIFTS TO ENDOWMENT

GIFTS TO ENDOWMENT

Edward E. Ford Endowment Fund

This fund was established in 1992 by a generous grant from the Edward E. Ford Foundation. The Fund provides support for the ongoing professional growth and development of OES faculty and staff. Half of the proceeds from the Wild Things Auction were directed to the Endowment. The following donor made a generous gift to the Fund.

Mrs. Robert T. Foote in Honor of her daughter
Linda Dickinson

OES Endowment

This year, funds from this unrestricted endowment were directed toward scholarship support.

Kay & Dave Bristow

Ruth Rose Richardson '36 Endowment

Established in 1985 to honor the beloved alumna and teacher by providing support for the Departments of English, Drama, Athletics and Religion.

Ruth Rose Richardson Trust

Spencer R. Collins Endowment

Established in 1983 by a charitable remainder annuity trust created under the will of Spencer R. Collins.

Estate of Spencer R. Collins

St. Helens Hall Scholarship

Established by the alumnae of St. Helens Hall in 1957, this fund was transferred to OES in 1970 to provide scholarship support.

Charmian Kolar Hilleary



▲ Upper School students enjoy a break between classes in the Great Hall.

Susan Elizabeth McClave Scholarship

Established in 1986 to honor the memory of Susan McClave, this scholarship is given annually to a member of the OES senior class who best exemplifies a "giving spirit" towards others.

Mr. & Mrs. Richard Schuurman
Ms. Virginia D. Tyler



▲ Chris McClave presents senior Jo-Anne Landry with the Susan Elizabeth McClave Scholarship for 1993-94.

GIFTS

MEMORIAL & HONORARY GIFTS

In Memory of Elsie Lou Carey '37

Mr. John Halsey Jones
Mrs. Elizabeth Netcher

In Memory of Paul Linke

Dr. Albert F. Macho
Ms. Judith Parsons
Ms. Barbara B. Trudel

In Memory of Ellen Manson

Mr. & Mrs. Steven J. Bitte
Ms. Nancy Duggan
Mr. & Mrs. Norman Hammersly
Sue & Tom Horstmann
James & Mary Kruchoski
Bill & Cindi Marshall
Mr. & Mrs. Donald McClave
Karen & Craig McClure
The Paz Family
Mr. Gary R. Pope
Mr. & Mrs. Peter W. Stevens
Scott & Sue Nicol
Curtis & Paula McCracken



▲ A tree was planted on the OES campus in memory of James G. Weber, beloved teacher and friend who passed away in February, 1994. Here, family, friends and students of Jim gather for the tree planting ceremony.

In Memory of Susan McClave
Mr. & Mrs. Richard Schuurman
Ms. Virginia D. Tyler

In Memory of Mary Simmonds Musgrove '27

Mrs. Ruth A'Court Tunturi

In Memory of Ruth Rose Richardson

Mrs. Sally Bowe Beaton

In Memory of Mary Reynolds

Mrs. Muriel Gabriel Heltzel
Ms. Maryanne Hill
Mr. & Mrs. James Holt
Mr. & Mrs. Harold H. Keil
Mr. Richard Meyer
Mr. & Mrs. Kenneth R. Meyer
Mrs. Rhoda Hollman Statter
Milton & Jean Zell
Mrs. Louise James

In Memory of Phillips Stevens

Joe & Sharon Cade

In Memory of Ellen Thielson

Ms. Marilouise H. Phelps
Ms. Jane Thielson

In Memory of George Zendt

Joe & Sharon Cade

In Honor of Noreen Calkins & Doug Whitmore

The Lyon Family

In Honor of Peter & Elisabeth Lyon's

Wedding Anniversary
Ned & Anne Thanhouser

In Honor of Paul Schlesinger's Birthday

The Lyon Family

In Honor of Peter Stevens' Birthday

The Lyon Family

In Honor of Linda Dickinson

Mrs. Robert T. Foote



▲ 1994 Honorary Alumna Helga Darel and Carl Reynolds were among former faculty members who attended the 1994 Reunion Weekend.



▲ 1993 Honorary Alumna Miss Eleanor Fass, teacher at the School for sixteen years, greets former student R.E. Clenton Richardson '79.

THE OES FUND

THE 1993-94 OES FUND

Under the leadership of the OES Fund Committee, unrestricted annual giving set a new record, with gifts totalling \$331,340.

1993-1994 The OES Fund Committee

Tony Adams
Trustee Development Chair
Pat Karamanos
OES Fund Chair
Carla Wilson & Kay Brantley
Parent Chairs
Betty Rennett Hooton '68
Alumni Chair
Christine Hayward
Past Parent Chair
Sally Drinkward
Grandparent Chair
Sue Stark, Craig McClure,
Judy Lynch and Rich Sherwood
Faculty/Staff Chairs

OES FUND SOCIETIES

Rodney Society

Sharing in the vision of the School's first Headmistress, Miss Mary Burton Rodney, the following donors expressed their confidence in OES through impressive generosity. We are grateful for their dedicated support.

Lifetime and Honorary Members

Mrs. Ned B. Ball
Mrs. James W.F. Carman
Mrs. Norman Chew
Mr. Robert Donaldson
Mr. and Mrs. Paul Gerhardt, Sr.
Mr. and Mrs. Robert Grover, Sr.
Mrs. Edmund Hayes
Mrs. Wilbur Hiller
Mr. and Mrs. Edward S. Holden
Mr. and Mrs. David Munro
Mr. B.H. Sellers
Dolores and Norm Winningstad

Bishop's Circle

Gifts of \$10,000 or more
ANONYMOUS
Peter & Missy Bechen
Henry Failing Fund

Ms. Susan L. Howell
Alan & Suzanne James
Mr. & Mrs. Chai Sophonpanich

Leadership Circle

Gifts of \$5,000 to \$9,999
Mr. & Mrs. Charles A. Adams
Adams Foundation
S.S. Johnson Foundation
Elisabeth & Peter Lyon
Mr. & Mrs. Jae Kyu Park
Tom & Susan Robinson
Stephen & Carole Thomas
Mr. & Ms. Gunther Weiss

Trustee's Circle

Gifts of \$2,500 to \$4,999
ANONYMOUS
Kay & Marty Brantley
Cecil & Sally Drinkward
Mr. Brent B. Erensel
James & Marilyn Frank
Ted & Diane Freres
Wayne & Joan Kuni
James A. & Fannie E. Malarkey
Foundation
Mrs. Cynthia Coats Raitlon
Mrs. J.A. Warren
Dr. Richard & Jana Westlund

Rodney Associates

Gifts of \$1,000 to \$2,499
ANONYMOUS
Richard C. & Carilyn M. Alexander
Mrs. Jane Mount Ammerman
Stephen E. & Melissa N. Babson
Ken & Linda Barker
Mrs. Alyce Cheatham
John & Deborah Chessar
Dr. & Mrs. Edgar Clark
Mr. & Mrs. Paul Diment
Mr. Robert Durst
Drs. Woodruff & Annie English
Susan T. & Paul Farago
The Farago Foundation
John & Katie Garvie
Richard & Janet H. Geary
Mr. & Mrs. Sean Patrick M. Gilronan
Kris & Steve Gregg
GTE Foundation
Bob & Kelly Hale
Henry & Sharon Hewitt
The Ralph & Adolph Jacobs
Foundation
Michael & Darlene Kaempt
Pat & John Karamanos
The Richard B. Keller Family
Mrs. George A.D. Kerr
Barry & Louise Kremkau
Wally & Cathy Krieger
Sean & Paige Parker Kuni
Mr. & Mrs. W.R. Lake Jr.
Mr. & Mrs. Peter Lin
John & Priscilla Longfield
Kim & Reidun Lundgren
Mr. & Mrs. Masahisa Masuda
Tom & Karen McClung

Scott & Sue Nicol
Nike/Inc.
Charles & Noreen Reali
Drs. Joe & Maggie Robertson
Mary & Al Rollins Jr.
Drs. John & Trudy Samples
Mr. & Mrs. James Sasselos
Mr. Paul R. Schlesinger
Gerald H. Siemens
Drs. Bill & Barbara Spears
John B. & Susan Spring
Leigh D. & Mary G. Stephenson
Mr. & Mrs. Peter W. Stevens
Mr. & Mrs. Wm. T. C. Stevens
Dale & Carol Stewart
Mrs. William Swindells
David B. & Terry Taylor
Stephen & Meri Taylor
Thomas D. Taylor Foundation
Dr. & Mrs. David TenHulzen
Ned & Anne Thanhouser
John & Frances von Schlegell
Mr. Hugh Walker
Lynne Parise & Mark Williams
Masatoshi & Susan Yamanaka
Mr. & Mrs. Jung Ju Yang

Headmaster's Club

Gifts of \$500 to \$999
James & Jane Adams
Aftab & Rehana Ahmad
Mrs. Ned Barclay Ball
Mr. & Mrs. Theodore H. Bokemeier
David & Kathy Bussman
Dr. & Mrs. Richard & Nancy
Chapman
Don & JoAnn Cornell
Ms. Hannah Davis
Mrs. Kuniko de Weese
Ulla & John Drell
Mrs. Dwight Follett
Dr. Kristine Gebbie
Dr. Neil Gebbie
Steve & Amy Haessler
Mr. & Mrs. James Harder
T. David & Gerri Hayes
Mr. & Mrs. Jerry Herman
D.A. & Meredith Hilderbrand
Gregg & Cindy Hoffman
Alex & Elaine Johnson Jr.
Lawrence & Barbara Kaplan
Clyte Speidel & Paul Keown
Jan & Chris Kitchel
Mrs. Lenore L. Klink
Ed & Margaret Kushner
Wes & Nancy Lematta
Wesley & Julie Lewis
Gil & Jackie Lipshutz
Beth Mason
Ms. Atsuko Matsuyama
May Dept. Stores Co. Foundation
Greg & Katherine McCoy
Mrs. Cozette Scott McGuire
Merrill Lynch & Co.
Kathleen Dodds & Matthew Miller
Drs. Laurie Hesla & James Miller
Leslie Mackenzie & Michael Morey
Chris & Linda Morgan



▲ OES parents Katbryn and Jeff Rippey and Carrie and Todd Stucky, at the 1994 OES Major Benefactors' Reception.

Barbara Ports & Michael Moser
Sandra S. Miles & Paul E. Norman
Greg & Aya Peterson
Hal & Helene Phillips
Terry & Mei-Lin Poon
Mr. R.E. Clenton Richardson
Jeff & Kathryn Rippey
Marc & Barbara Robins
Susan & Scott Russell
Mrs. Howard Sargent
Lenita & Michael Scheetz
William & Leslie Anne Scheible
Miles & Patsy Seeley
Mr. Paul B. Smith
Adrienne Souther
Todd & Carrie Stucky
Mr. & Mrs. Robert S. Sweeney
Tektronix Foundation
Mr. & Mrs. Peter Turney
Mr. & Mrs. Frank M. Warren Sr.
James & Sydnie Waskey
Jack & Ginny Wilborn
Mr. & Mrs. Charles & Williams
Steve & Patty Williams
James & Carla Wilson
Allen & Rebecca Wirfs-Brock
Mr. & Mrs. Norman A. Workman
Ian & Kazzie Young
Steven & Annette Zack

Hallmark Club

Gifts of \$250 to \$499
Christopher & Sheryl Acheson
Bob & Kathleen Ames
Dr. & Mrs. James W. Asaph
Craig & Jamie Austin
Sharlene & Gene Austin
Mr. & Ms. David Bailey
The Bank of New York
Mr. John M. Berman
Dr. & Mrs. John Berwind
Mr. & Mrs. Steven J. Bitte
Bob & Nell Bonaparte
Mrs. Audra M. Braun
Mrs. Leslie S. Campbell
Drs. Nancy Salisbury &
Jeff Campbell
Jon & Ellen Garder
Mike & Cheryl Carrier
Ding & Patsy Chan
Dr. Clark Chipman
Mrs. George W. Conklin
Paul & Christine Cooper

THE OES FUND

William & Elaine Corvin
Janet Trullinger & Thomas Crawford
Mr. & Mrs. William B. Crow
Mr. & Mrs. Bryan M. Cullivan
Janet Maurer & Bill Davenport
Mrs. Jane Greenberg Downs
Mr. Cornelius Duffie Jr.
Ms. Barbara Durrett
Vivian & Timm Edell
Ron & Lynne Enyeart
Drs. David & Kendra Farris



▲ A Valentine's Day note from the 1993-94 OES Fund Committee.

Dr. Robert & Kristina Fields
Ms. Carol F. Floten
Flowerree Foundation
Mr. & Mrs. James B. Gaffney
Clarence & Myrtle Rae Greenwood
John & Susan Gundle
Charles & Gwen Hahn
Mrs. Carlos Hamilton
David & Wendy Hamilton
Mrs. U.S. Harkson
Sandy & Jeri Haskins
Mrs. Betty Lou Hatcher
Mrs. Edmund Hayes
Tom & Judi Henkle
Ms. Barrie Herbold
Jim & Barbara Herbold
Mr. Fred Ing
Mrs. Kathryn R. Janssen
Jewett, Barton, Leavy & Kern
David & Eileen Johnson
Charles & Patricia Kellogg
Klaus & Sharleen Kleber
Eckhardt & Veona Koenige
August & Mallie Kollom
Mr. & Mrs. Suen-Kow Koo
Mrs. Molly Clair Krausse
Lynn & Larry Krups
Mr. & Mrs. Hoichi Kurisu
Mr. & Mrs. Tsutomu Kyuzaki
Mr. R.G. LaFollette
Robert & Mary Laird
Ms. Helena G. Barbey Lankton
Drs. Fernando & Dolores Leon
Mrs. J. Harold Lineberger
Francis & Lucy Liu
Robert W. & Kathleen M. Love
Michael & Catherine Malos
Mrs. Barbara F. Marontate
Sylvia & John Mathews
Ms. Karen L. Mefferd
Dr. & Mrs. Martin Mehr

Mrs. W. Dickerson Milliken
Ms. Tatiana Moller
Michael & Dana Morasch
Greg & Diane Morgan
Frank & Kathryn Nance
Mr. Jim O'Donnell
Drs. NG & D Orfanakis
Gary & Dana Ostenson
Catherine Riffe & Thomas Page
Phil & Lynne Papworth
Ms. Faye E. Pepin
Mrs. Patricia Pearson Peterson
Dr. June Dunbar Phillips
Mr. Gary R. Pope
Sam & Anne Pope
PPG Industries Foundation
Richard & Louise Rawlinson
Charles & Christina Reynolds
Dan & Armande Ritter
Mrs. Nancy S. Rosenfeld
Hiroshi & Masami Saitoh
Howard W. & Eileen E. Schlepp
Mr. Jeffrey Smith
Frances & Currin Snipes
Mrs. Katherine Sotka
Linda Coffey Stone & Peter Stone
Beth & Mike Swink
John B. & Karen A. Taylor
Mr. & Mrs. P.Y. Teng
Mrs. Richard C. Tevis
Kathleen & Terry Van Ballegooijen
Mr. & Mrs. Samuel Van Vactor
Haleh & Sohrab Vossoughi
Dr. & Mrs. Edward E. Ward
Mrs. Alice Freeze Warner
Beth & Bob Warner
Morris & Paula Westlund
Dennis & Patricia Winningstad
Bob & Marilyn Wood
Mark & Leslie Workman
Mr. & Mrs. Tetsu Yamaguchi

Founders' Club

Gifts of \$125 to \$249

Simon & Lisa Acheson
Drs. Riyaz & Zeenat Ahmed
Karen B. Alfond
Aon Corporation
Herbert & Iris Arnett
Mrs. Norma Fisher Atkins
Bob & Sally Auguston
Robert & Catherine Barlow
Sharon & Keith Barnes
Miss Shirley Barton
William & Elizabeth Belgard
Mrs. Jean Duffie Benedict
Ken & Judith Bennington
Dr. Gerard Berardi
Mrs. Barbara B. Berglund
Mr. William E. Bethards
Dr. Anita Cadonau Birkland
Sally J. Bjerkle
Mr. Martin Bleeck
David & Betsey Blessing
James & Linda Blinkhorn
Russ & Mary Anne Boardman
The Boeing Company
Janice Brown

Drs. Moir & Sudge Budden
Tom & Jackie Calkins
Robert & Janice Cassidy
Ms. Charyl Cathey
Mrs. Helen McKeever Chastain
Geoff & Rhonda Chew
MR2 Clair Clark
Elizabeth & Charles Colip
Dennis & Gayle Collins
Mrs. Alexandra Dussin Cook
Mrs. David M. Craig
Don & Lilian Crawford
Mrs. Janet Mann Crawford
Gary & Laurie Crossman
Cristin Babcock & Eric Cullander
Jim & Sallie Cutler
Theo & Jo de Bruin
Mrs. Robin Oulton Decius
Harry & Merry Demarest
Ms. Lori Diaz
Linda & Nate Dickinson
Jerry & Patti Doble
Mrs. Patricia M. Dowling
Wayne & Julie Drinkward
Jay & Laurie Dugoni
Mrs. Betty Lou Dunlop
Mr. Steve Eckhardt
Mrs. Jane Edwards
Dr. Melanie Ellison
Mrs. Susan Woodruff Emery
Donald & Jana Evans
Mrs. Nancy Morris Feldman
Mrs. Helen Stratton Felker
Greg & Mary Ferguson
Ms. Amy Fields
Mr. & Mrs. William S. Findlay
Jerry & Sally Fish
Brad & Kami Fraley
Mrs. Norman W. Frink Sr.
Mrs. Yasuko T. Fukano
Mrs. Florence Fuller
Victoria DeVito & Craig Fuller
Drs. Michael & Barbara Gaines
Michael & Clara Gamache
Paul & Sarah Gary
Dr. & Mrs. Milt Gavlick
Sharon Eileen Gebbie
Donna & John Ghiorso
Alex & Karen Grauert
Mrs. Diana Barnard Gray
Mrs. Joan Irwin Green
Bob & Suzanne Greenberg



▲ Parents Darlene Kaempf and Margie Adams at the OES Major Benefactors' Reception.

Mr. & Mrs. Robert E. Grissom
Mrs. Patricia B. Hamilton
Dr. Merrily P. Hansen
Howard & Molly Harris
Brian & Janice Harwood
Mrs. Betty Hedberg
Delbert & Rosa Hemphill
Alan & Rebecca Hencky
David & Sandra Herman
Dr. & Mrs. D. Christopher Hikes
Mrs. Charmian Kolar Hilleary
Curt & Theresa Hiline
Mrs. Barbara Jean Hinman
Keith & Catherine Hoelscher
Mrs. Jean Irwin Hoffman
Mrs. M.B. Hoffman
Rebecca & Tom Holder
Mrs. Margaret M. Holmgren
Mr. & Mrs. Robert A. Holmstrom
Ms. Betty Hooton
The Rev. Lucy L. Houser
Mrs. Dorothy Sloan Huey
Keith & Myrna Icombe
Dr. & Mrs. Toru Ike
Marion & Gordon Janney
Mrs. Janet L. Jewett
Bill & Marcia Johnson
Chris & Ann Johnson
Mrs. Marcy Drain Jordan
Ms. Shannon Mong Joseph
Mr. John Karamanos Jr.
Ms. Susie Kasper
Kemper Securities, Inc.
Mr. Doug Kezeor
Mrs. Marion L. Kingery
William G. Kirkman
Mrs. Susan Krohn Koe
Mr. & Mrs. John Kowolik
Terry & Wendy Lane
Duane H. Laun
Felix & Carol Licini
Ms. Elizabeth Lilley
Warren Hirsch & Kate Loggan
Brian & Lisa Marsh
Henrik & Britt Martens
Mrs. Martha Randall Mason
Mrs. Patricia J. Maulbetsch
D. Charles & Sara G. Mauritz
Curtis & Paula McCracken
Mrs. Linita McDonald
Cindy Knowles & Hollis McMillan
Mrs. Diane Meade
Mr. George E. Moller



▲ St. Helens Hall alumna Betty Lou Roberts '36 and trustees Harriett Dixon and Jack Spring, at the Founders' Day luncheon in November, 1993.

THE OES FUND

Mrs. Susan D. Moore
 Mrs. Frances A. Morgan
 Nicholas & Susan Moros
 The Rev. Robert P. Morrison
 Mrs. Mary H. Naab
 Mr. & Mrs. Harry Namba
 Ms. Julie Neupert
 Ms. Margaret L. Newhall
 Mr. Kenneth B. Noack Jr.
 Dr. & Mrs. Christopher Nogeire
 Mrs. Sara-Jane Henderson Norwood
 Stephen & Linda Olson
 Joe & Suzie Opsahl
 Mr. & Mrs. Monford Orloff
 Mrs. Betty Barr Patrick
 Carol Ward & John Pedisich
 Mark & Rosanne Perry
 Mr. & Mrs. Daniel T. Phillips
 Mr. & Mrs. Christopher Platt
 Johannes H. & Atsumi Polstra
 Mr. David Powell
 Frank & Carol Powers
 Ms. Meridel J. Prideaux
 Prudential Securities
 Dr. Geraldine Pulito
 Colleen Acres & William A. Rabiega
 Mr. Lawrence Radcliffe
 Maty & Nasrin Rahatzad
 Ms. Karin Randall
 Mr. James R. Rear Jr.
 Dr. & Mrs. David Regan
 Howard & Sally Reichmuth
 Mr. & Mrs. Joe Robertson
 Harvey & Miriam Rogers
 Mr. & Mrs. Edward Rubovits
 Loree & Ken Sakai
 Mr. & Mrs. William Sakai
 Eric & Pam Sankey
 Richard W. & Mary W. Sapp
 Mia & Lou Savage
 Michael & Pamela Schaeffer
 Frank W. & Betty R. Scheible
 Mr. Jordan D. Schnitzer
 Ms. P.J. Sears-Million
 Waldemar & Patricia Seton
 Joel & Sandra Shilling
 Mr. & Mrs. Jay A. South
 Peter & Frances Spencer
 Jeff & Kathy Spere
 R.E. & Helen Spiker
 Mr. & Mrs. Jonathan N. Spitz
 Mrs. Jemi Cain Spriggs
 Judy & Steve Standing
 Ms. Anne Stevenson
 Helen Mills Stoll
 Mrs. Sally Reed Stout
 Mr. Gregory Sweigert
 Mrs. Stephen Eberly Thompson
 Lee & Lani Thornton
 Dr. & Mrs. Matti Totonchy
 Lucille Van Houten
 Ms. Lee Diane Collins Vest
 Gary & Shirley Voelker
 Jon & Barbara von Behren
 Dale & Patricia Walhoo
 Ms. Laura Wallace

Washington Mutual
 Mr. Percival J. Webster
 Ms. M. Jenelyn Wessler
 West One Bank
 Mrs. Libby Bishop Westlund
 Nancy Greene & David Wilson
 Dr. David K. Winchester
 Bob & Jane Winger
 Richard & JoEllen Winningstad
 Arlene & Woody Wittmayer
 Mrs. Betty Jo Wright
 Ms. Nancy Woodworth Young
 George & Eleanor Zendt
 Louisa & Harvey Zendt
 Mr. & Mrs. William Zobrist Jr.



▲ Cecil Drinkward presented trustee Peter Bechen with the Cecil Drinkward Award for Trustee Excellence for 1993-94.

OES BOARD OF TRUSTEE OES FUND GIVING

Mr. Charles A. Adams
 Mr. Peter F. Bechen
 Mr. Marty Brantley
 The Very Rev. Roy Coulter
 Mrs. Harriett Dixon
 Mr. Wayne Drinkward
 Mr. Robert Durst
 Mr. Sean Patrick Gilronan
 Mrs. Betty Hedberg
 The Rev. Lucy L. Houser
 Mr. Chris Kitchel
 Mr. Sean Kuni
 The Rt. Rev. Robert L. Ladehoff
 Elisabeth Lyon
 The Rev. Robert P. Morrison
 David & Karen Pratt
 Mr. Paul R. Schlesinger
 Mrs. Katherine Sotka
 John B. Spring
 Mr. Peter W. Stevens
 Mr. Dale Stewart
 Anne Thanhouser
 Mrs. James Waskey

OES PARENT ANNUAL GIVING

Under the leadership of Pat Karamanos, the OES Fund grade chairs raised a record \$189,388 from parents for The OES Fund. Thank you to all of our parent volunteers for their hard work and dedication to the School!

Grade Chairs

Christine Cooper
Pre-Kindergarten
 Patty and Steve Williams
Kindergarten
 Priscilla and John Longfield
Primary
 Sharon and Henry Hewitt
First Grade
 Janet Maurer
Second Grade
 Laurie Turney
Third Grade
 Susan Quattrocchi
Fourth Grade
 Jana and Richard Westlund
Fifth Grade
 Kathleen Dodds and Matthew Miller
Sixth Grade
 Richard Bambam
Seventh Grade
 Wendy Hamilton
Eighth Grade
 Annie English
Ninth Grade
 Linda Smith
Tenth Grade
 Jackie Lipshutz
Eleventh Grade
 Margie and Tony Adams
Twelfth Grade

LOWER SCHOOL

Pre-Kindergarten 100.0%
 Sharlene & Gene Austin
 Paul & Christine Cooper
 Dr. Robert & Kristina Fields
 Brad & Kami Fraley
 Sandy & Jeri Haskins
 David & Sandra Herman
 James & Carol Hibbs
 Sean & Paige Parker Kuni
 Ed & Margaret Kushner
 Mai-Lill & Rein Magi

Brian & Lisa Marsh
 Ms. Beth Mason
 Greg & Katherine McCoy
 Leslie Mackenzie & Michael Morey
 Dr. & Mrs. Charles Morrow
 Terry & Jamie Putnam
 Lee C. Olsen & David H. Ross
 Mr. & Mrs. Jonathan N. Spitz
 Linda Coffey Stone & Peter Stone
 Mr. & Mrs. Robert S. Sweeney
 Mr. Gregory Sweigert
 Sohrab & Haleh Vossoughi
 Mr. & Mrs. Charles & Williams

Kindergarten 85.2%

Jon & Barbara von Behren
 William & Elizabeth Belgard
 James & Linda Blinkhorn
 Kay & Marty Brantley
 Mr. James L. Buchal
 Drs. Nancy Salisbury & Jeff Campbell
 Robert & Janice Cassidy
 Dr. & Mrs. Richard & Nancy Chapman
 Janet Trullinger & Thomas Crawford
 Brian Foulkes & Fernanda D'Agostino
 Janet Maurer & Bill Davenport
 Jay & Laurie Dugoni
 Drs. David & Kendra Farris
 Dr. & Mrs. Milt Gavlick
 Dan & Linda Gipe
 Ms. Pauline Gregory
 Charles & Gwen Hahn
 Mary Michael & Kobel Haver
 Curt & Theresa Hineline
 Gary & Ericka Hoffman
 Dr. & Mrs. Kenneth Janoff
 Ms. Annmarie Carlson-Loder
 Kenneth & Deborah Marsh
 Russ & Pat Mickiewicz
 Steve & Anita Mitchell
 Ms. Tatiana Moller
 Paul & Mary Oldshue
 Mr. & Mrs. Christopher Platt
 Friderike Heuer & Daniel Reisberg
 Jeff & Kathryn Rippey
 Loree & Ken Sakai
 Wendy E. Sample
 Mr. & Mrs. James Sassalos
 John & Frances von Schlegell
 Frances & Currin Snipes
 Ernie & Erika Staley
 Todd & Carrie Stucky
 Ms. Elizabeth A. Trainor
 Martha & Mark Warrington
 Mr. & Mrs. Troy Westerdahl
 Morris & Paula Westlund
 Steve & Patty Williams
 Nancy Greene & David Wilson
 Dieder Caine & Tom Wilson
 Mark & Leslie Workman
 Steven & Annette Zack

THE OES FUND

<p>Primary 93.3%</p> <p>Sharon & Keith Barnes Bob & Nell Bonaparte Ulla & John Drell Paul & Sarah Gary Kris & Karen Van Hatcher Drs. Judith Sobel & Gregory Koski John & Priscilla Longfield Michael & Catherine Malos Dawn & Dan Milliron Jeff & Kathy Spere Mr. & Mrs. Robert S. Sweeney Dr. & Mrs. David TenHulzen Ned & Anne Thanhouser James & Carla Wilson</p> <p>First Grade 90.2%</p> <p>James & Jane Adams Bob & Sally Auguston Peter & Nora Auseklis James & Beverly Bow David & Kathy Bussman Cristin Babcock & Eric Cullander Dr. Robert & Kristina Fields Diane & Jim Flack Victoria DeVito & Craig Fuller Steve & Amy Haessler Brian & Janice Harwood Fritz & Maggie Hayes Henry & Sharon Hewitt Rebecca & Tom Holder Dr. & Mrs. Kenneth Janoff Eckhardt & Veona Koenige Ed & Margaret Kushner Terry & Wendy Lane Christi & Granville Lee Elizabeth von Behren & Allan Lehman Mai-Lill & Rein Magi Brian & Lisa Marsh Ms. Atsuko Matsuyama Cindy Knowles & Hollis McMilan Daisy Housel-Miller & Ted Miller Leslie Mackenzie & Michael Morey Greg & Diane Morgan Barbara Ports & Michael Moser David & Penny Olien Joe & Suzie Opsahl Michael Christenson & Patricia Osborne Phil & Lynne Papworth Drs. Joe & Maggie Robertson Marc & Barbara Robins Tom & Susan Robinson Drs. John & Trudy Samples Mary & Jack Schunk Judy & Steve Standing Ray & Mary Streinz Todd & Carrie Stucky Ned & Anne Thanhouser Mr. & Mrs. Peter Turney Bernd & Petra Wahler Robert & Stephanie Wight Dennis & Patricia Winningstad Louisa & Harvey Zendt</p>	<p>Second Grade 71.2%</p> <p>Anonymous Bob & Kathleen Ames Robert & Catherine Barlow Kay & Marty Brantley Joe & Sharon Cade Robert & Janice Cassidy Dr. & Mrs. Richard & Nancy Chapman Paul & Christine Cooper Janet Maurer & Bill Davenport Ms. Barbara Durrett Jerry & Sally Fish Mr. & Mrs. Richard Garvin Ms. Mindy Gavette Bob & Suzanne Greenberg Ms. Pauline Gregory Bob & Kelly Hale David & Wendy Hamilton James & Carol Hibbs Lawrence & Barbara Kaplan Pat & John Karamanos Eckhardt & Veona Koenige Jeanette & David Larson Wesley & Julie Lewis Russ & Pat Mickiewicz Kathleen Dodds & Matthew Miller Dawn & Dan Milliron Chris & Linda Morgan Frank & Kathryn Nance Ms. Julie Neupert Catherine Riffe & Thomas Page Ms. Faye E. Pepin Mark & Rosanne Perry Lee C. Olsen & David H. Ross Loree & Ken Sakai Michael & Pamela Schaeffer James & Carla Wilson Masatoshi & Susan Yamanaka</p> <p>Third Grade 89.3%</p> <p>Simon & Lisa Acheson Jon & Barbara von Behren Karen Fast & Robert Bennett Dr. Gerard Berardi Mr. & Mrs. Jean D. Brault Janice Brown Ms. Sandra Cade Mike & Cheryl Carrier Mr. & Mrs. William B. Crow Mr. Robert Dahmen Thomas & Pamela Daniels Ms. Lori Diaz Julianne & Michael Early Ron & Lynne Enyeart Susan T. & Paul Farago Grant & Mary Ellen Farr Mr. & Mrs. Richard Garvin Mr. & Mrs. Raymond Ghattas Donna & John Ghiorso Alex & Karen Grauert Sandy & Jeri Haskins Kris & Karen Van Hatcher Pat & John Karamanos Charles & Patricia Kellogg Warren Hirsch & Kate Loggan John & Priscilla Longfield Elisabeth & Peter Lyon</p>	<p>Ms. Beth Mason Ms. Atsuko Matsuyama Ms. Karen L. Mefferd Ms. P.J. Sears-Million Ms. Tatiana Moller Greg & Diane Morgan Julie Frantz & Craig Murphy Sandra S. Miles & Paul E. Norman Joe & Suzie Opsahl Mr. & Mrs. Christopher Platt Charles & Christina Reynolds Drs. Joe & Maggie Robertson Hiroshi & Masami Saitoh Paul & Lisa Sauer John & Frances von Schlegell Mr. Gregory Sweigert Ned & Anne Thanhouser Dr. & Mrs. Matti Totonchy Mr. & Mrs. Peter Turney Dr. Richard & Jana Westlund Steven & Annette Zack Ms. Leslie Zega Louisa & Harvey Zendt</p> <p>Fourth Grade 91.7%</p> <p>Anonymous James & Jane Adams Ken & Linda Barker Allen & Rebecca Wirfs-Brock Ding & Patsy Chan Elizabeth & Charles Colip Janet Trullinger & Thomas Crawford Gary & Laurie Crossman Mr. & Mrs. Bryan M. Cullivan Ms. Lori Diaz Linda & Nate Dickinson Jerry & Sally Fish Ms. Carol F. Floten Ms. Nikki Hatton Fritz & Maggie Hayes Alan & Rebecca Hencky Lucille Van Houten Mr. & Mrs. Hoi Huynh Keith & Myrna Icombe Alex & Elaine Johnson Jr Michael & Darlene Kaempf Jan & Chris Kitchel Wally & Cathy Krieger Dixie & Tom Kroupa Greg & Diane Landers Elizabeth von Behren & Allan Lehman Robert W. & Kathleen M. Love David & Jacquie Lukens Elisabeth & Peter Lyon H. Storm Floten MD Drs. Laurie Hesla & James Miller Scott & Sue Nicol Paul & Mary Oldshue Mr. & Mrs. Daniel T. Phillips Richard & Victoria Ponting Frank & Carol Powers Ms. Susan Quattrocchi Maty & Nasrin Rahatzad Pam Waldman & Dan Rosenhouse Drs. John & Trudy Samples Mr. & Mrs. Edmund A. Stevens Diedre Cain & Tom Wilson Mark & Leslie Workman Ian & Kazzie Young</p>	<p>Fifth Grade 81.1%</p> <p>Simon & Lisa Acheson Bob & Kathleen Ames Mr. & Mrs. Jean D. Brault Dennis & Gayle Collins Cristin Babcock & Eric Cullander Wayne & Julie Drinkward Donald & Jana Evans Victoria DeVito & Craig Fuller Alex & Karen Grauert Clarence & Myrtle Rae Greenwood John & Susan Gundle Ms. Cynthia Hayakawa Delbert & Rosa Hemphill Tom & Judi Henkle Henry & Sharon Hewitt Ms. Virginia Player Iles David & Eileen Johnson Lawrence & Barbara Kaplan Drs. Robert & Mary Catherine King Jan & Chris Kitchel Klaus & Sharleen Kleber Jeanette & David Larson Wesley & Julie Lewis Chester & Linda Marshall Robert & Abigail Marshall Ms. Sarah McNary Russ & Pat Mickiewicz Daisy Housel-Miller & Ted Miller Ms. Tatiana Moller Dr. & Mrs. Christopher Nogeire Hal & Helene Phillips Dr. & Mrs. David Regan Tom & Susan Robinson Harvey & Miriam Rogers Mr. & Mrs. Richard L. Sadler Mr. & Mrs. James Sassalos Mary & Jack Schunk Mr. & Mrs. Jay A. South Ned & Anne Thanhouser Martha & Mark Warrington Dr. Richard & Jana Westlund Paul H. & Diane F. Whitney Dr. David K. Winchester</p> <p>MIDDLE SCHOOL</p> <p>Sixth Grade 96.2%</p> <p>Christopher & Sheryl Acheson Aftab & Rehana Ahmad Drs. Riyaz & Zeenat Ahmed Richard C. & Carilyn M. Alexander Robert & Catherine Barlow Dr. Gerard Berardi Russ & Mary Anne Boardman Lew & Julia Brinegar Allen & Rebecca Wirfs-Brock Ms. Jeannette Brown David & Kathy Bussman Joe & Sharon Cade Tom & Jackie Calkins Lan Lu & Tom Chou Mr. & Mrs. James L. Dunn Drs. Woodruff & Annie English Mr. & Mrs. Raymond Ghattas Mr. & Mrs. Sean Patrick M. Gilronan John & Bonnie Gregory David & Wendy Hamilton Ms. Peigi Huseby</p>
---	--	--	---

THE OES FUND

Michael & Darlene Kaempf
 Clyde Speidel & Paul Keown
 Gil & Jackie Lipshutz
 Mrs. Diane Meade
 Scott & Lynn Miller
 Kathleen Dodds & Matthew Miller
 Michael & Dana Morasch
 Gary & Dana Ostenson
 Carol Ward & John Pedisich
 James & LouAnn Pickering
 Johannes H. & Atsumi Polstra
 Terry & Mei-Lin Poon
 Charles & Christina Reynolds
 Joel & Sandra Shilling
 Stephen & Virginia Slater
 Mr. & Mrs. Jay A. South
 Drs. Bill & Barbara Spears
 R.E. & Helen Spiker
 John B. & Karen A. Taylor
 Dr. & Mrs. Matti Totonchy
 Martin & Irene Vlach
 Dr. & Mrs. Edward E. Ward
 James & Sydnie Waskey
 Dr. Richard & Jana Westlund
 Bob & Jane Winger
 Dennis & Patricia Winningstad
 Richard & JoEllen Winningstad
 Mark & Leslie Workman
 Ms. Leslie Zega

Seventh Grade 73.2%

Bob & Sally Auguston
 Ken & Linda Barker
 Lew & Julia Brinegar
 Elizabeth & Charles Colip
 Jim & Sallie Cutler
 Mary & Peter Davidson
 Ann & Mike Donnelly
 Mr. & Mrs. Jay D. Enloe
 John & Katie Garvie
 Tom & Judi Henkle
 Ms. Barrie Herbold
 Jim & Jan Hibbard
 Dr. & Mrs. D. Christopher Hikes
 Mr. & Mrs. Hoi Huynh
 Ms. Virginia Player Iles
 Mr. William Impey
 Mr. Fred Ing
 Alex & Elaine Johnson Jr
 Morton & Susan Kelsey
 Paul & Patti Knollman
 Lynn & Larry Krups
 Robert & Mary Laird
 Mr. Herbert Landon
 Pat Timberlake & Matthew Lyon
 Tom & Karen McClung
 Paul & Jean Patsis
 Richard & Victoria Ponting
 Mr. David Powell
 Colleen Acres & William A. Rabiega
 Ms. Karin Randall
 Dr. & Mrs. David Regan
 Richard W. & Mary W. Sapp
 Milles & Patsy Seeley
 Jack & Pat Semura
 Adrienne Souther
 David B. & Terry Taylor
 Mr. & Mrs. Samuel Van Vactor

Jack & Ginny Wilborn
 Carl & Pam Wilcox
 Ms. Nancy Wolfe
 Les Smith & Nadine Wooley

Eighth Grade 75.4%

Karen B. Alford
 Bob & Sally Auguston
 Craig & Jamie Austin
 Mr. Bradley Baugher
 Peter & Missy Bechen
 Joe & Sharon Cade
 Dr. Clark Chipman
 William & Elaine Corwin
 Dr. Wendy M. Darden
 Linda & Nate Dickinson
 Jerry & Patti Doble
 Bobby & Carl DuBose
 Peter & Tammy Ebert
 Ms. Carol F. Floten
 Mr. & Mrs. James B. Gaffney
 John & Susan Gundle
 David & Wendy Hamilton
 Brian & Janice Harwood
 Mrs. Florence Hedlund
 D.A. & Meredith Hilderbrand
 Ms. Peigi Huseby
 Ms. Gail Auguston-Koppen
 Dr. & Mrs. William Lamb
 Kim & Reidun Lundgren
 H. Storm Floten MD
 Drs. Juan & Monica Millan
 Michael & Dana Morasch
 Dr. & Mrs. Christopher Nogeire
 Chet & Wendy Orloff
 Dr. Geraldine Pulito
 Mr. Lawrence Radcliffe
 Lawrence & Susan Rein
 Harvey & Miriam Rogers
 Mr. & Mrs. Richard L. Sadler
 Mary & Jack Schunk
 Mr. & Mrs. David Shoulders
 Paul & Linda Smith

Dick & Candy Snyder
 Peter & Frances Spencer
 Connie Stevenson
 James & Sydnie Waskey
 Douglas & Gwen Whitmore
 Mary Burgess & Thomas Willing

UPPER SCHOOL

Class of '97 61.0%

Freshman Parents

Joan Becker
 Mr. & Mrs. Steven J. Bitte
 Theo & Jo de Bruin
 Mrs. Linda A. Carroll
 Ms. Sarah Elizabeth Cowie
 Gary & Laurie Crossman
 Wayne & Julie Drinkward
 Vivian & Timm Edell
 Drs. Woodruff & Annie English
 Mr. & Mrs. William S. Findlay
 Ms. Kathryn F. Gray
 John & Bonnie Gregory
 Gregg & Cindy Hoffman
 Mary & Al Rollins Jr
 Paul & Lynnsly Kollar
 Mr. & Mrs. Suen-Kow Koo
 Mr. & Mrs. John Kowolik
 Mr. David Menely
 Nicholas & Susan Moros
 Loren & Dina Morse
 Mike & Janet Phillips
 Hal & Helene Phillips
 James & LouAnn Pickering
 Richard & Victoria Ponting
 Howard & Sally Reichmuth
 Mia & Lou Savage
 David & Judy Schiff
 Bev & John Shue
 Ms. Mei Shum
 Ms. Jean D. Smith
 Mr. & Mrs. Chai Sophonpanich
 Dale & Carol Stewart

Dr. & Mrs. Matti Totonchy
 Beth & Bob Warner
 Nely Johnson & David Wilson
 Arlene & Woody Wittmayer

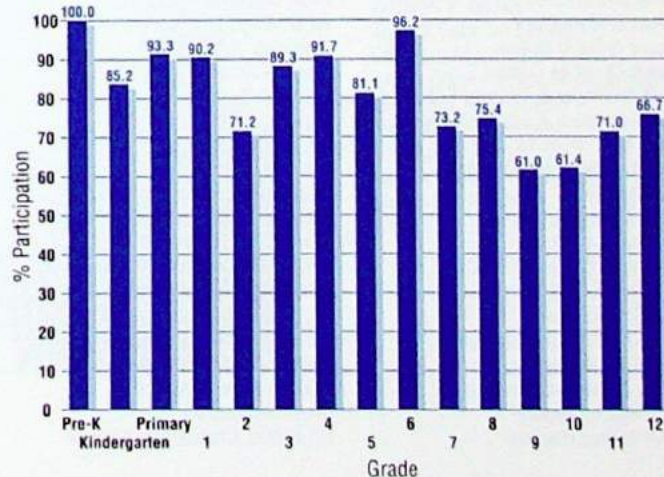
Class of '96 61.4%
Sophomore Parents

Mr. Bradley Baugher
 Mr. John M. Berman
 James & Diane Bickford
 Ms. Hannah Davis
 Larry & Mary Feltz
 Rick & Laurie Gobel
 Ms. Patricia Green
 Mr. & Mrs. Jerry Herman
 Keith & Catherine Hoelscher
 Mr. & Mrs. Hoi Huynh
 Dr. & Mrs. William Lamb
 Ms. Colleen Lashbaugh
 Francis & Lucy Liu
 Loren & Dina Morse
 Stephen & Linda Olson
 Ms. Sondra J. Price
 Ms. Mary Kline Rose
 Susan & Scott Russell
 Mr. Rick Seifert
 Stephen & Virginia Slater
 Paul & Linda Smith
 Dale & Carol Stewart
 Beth & Mike Swink
 Stephen & Meri Taylor
 Mr. & Mrs. Raymond Webber
 Bob & Marilyn Wood
 Mr. & Mrs. Tetsu Yamaguchi

Class of '95 Junior Parents 71.0%

Ms. Lucinda Agre
 Kathleen & Terry Van Ballegooijen
 David & Betsey Blessing
 Theo & Jo de Bruin
 Jon & Ellen Carder
 Ms. Sharon N. Chapman
 Mr. Michael Chapman
 John & Deborah Chessar
 Michael & Pamela Coffeen
 Mr. Gerald deJaager
 Wayne & Julie Drinkward
 Drs. Woodruff & Annie English
 Greg & Mary Ferguson
 Joe Graziano
 Kris & Steve Gregg
 Brian & Janice Harwood
 Rod & Terri Hatch
 Gregg & Cindy Hoffman
 Alan & Suzanne James
 Michael & Darlene Kaempf
 Mr. & Mrs. Suen-Kow Koo
 John & Rebecca LeCavalier
 Mr. & Mrs. Moon Woo Lee
 Gil & Jackie Lipshutz
 Henrik & Britt Martens
 Mr. & Mrs. Masahisa Masuda
 Dr. & Mrs. Martin Mehr
 Keith & Diane Meisenheimer
 Scott & Lynn Miller
 Dr. & Mrs. Christopher Nogeire
 Drs. NG & D Orfanakis
 Mr. & Mrs. Jae Kyu Park

The OES Fund Parent Participation 1993-94



GIFTS

Judy Person
 Greg & Aya Peterson
 Charles & Noreen Reali
 Bob & Pat Rossi
 Susan & Scott Russell
 Eric & Pam Sankey
 William & Leslie Anne Scheible
 Miles & Patsy Seeley
 Dick & Candy Snyder
 Mr. & Mrs. Chai Sophonpanich
 Fred & Shelley Stoffer
 Mr. & Mrs. P.Y. Teng
 Lee & Lani Thornton
 Mr. & Mrs. Samuel Van Vactor
 Gary & Shirley Voelker
 Richard & Cynthia Waitt
 Mr. & Mrs. Jung Ju Yang

Class '94 Senior Parents 66.7%

Mr. & Mrs. Charles A. Adams
 Ken & Judith Bennington
 Mrs. Linda A. Carroll
 Mr. & Mrs. Chris Chang
 Don & Lilian Crawford
 Mr. & Mrs. Alan Duncan
 James & Marilyn Frank
 Ted & Diane Freres
 Dr. Kristine Gebbie
 Dr. Neil Gebbie
 Mr. & Mrs. Jerry Herman
 Ms. Cheryl Hiller
 Dr. & Mrs. Toru Ike
 Mary & Al Rollins Jr
 Barry & Louise Kremkau
 Robert & Mary Laird
 Ronald & Lourdes Landry
 Felix & Carol Licini
 Mr. & Mrs. Peter Lin
 D. Charles & Sara G. Mauritz
 Mr. David Menely
 Ms. Jeanette Morales
 Hideto & Ritsuyo Moriyasu
 Dave & Dolly Moser
 Paul & Jean Patsis
 Sam & Anne Pope
 Dan & Armande Ritter
 Lenita & Michael Scheetz
 Gerald H. Siemens
 Ms. Barbara Smith
 Mr. Jeffrey Smith
 John B. & Susan Spring
 Bonnie & Roger Stanke
 Stephen & Carole Thomas



▲ Dorm students Nick Charleston and Nancy Lee.

RESTRICTED GIFTS

Aardvark Fun Park

Mr. A. Bruce Hallock

Athletic Dept.

Dale & Carol Stewart
 Mr. James Dyer

Beginning School Reading

In memory of Ellen Manson
 Mr. & Mrs. Steven J. Bitte
 Ms. Nancy Duggan
 Mr. & Mrs. Norman Hammersly
 Sue & Tom Horstmann
 James & Mary Kruchoski
 Bill & Cindi Marshall
 Mr. & Mrs. Donald McClave
 Karen & Craig McClure
 Scott & Sue Nicol
 The Paz Family
 Mr. Gary R. Pope
 Mr. & Mrs. Peter W. Stevens

Birthday Books

These gifts honor the birthdays of OES Lower School students.

Anonymous
 Simon & Lisa Acheson
 James & Jane Adams
 Bob & Kathleen Ames
 Peter & Nora Auseklis
 Craig & Jamie Austin
 Robert & Catherine Barlow
 Sharon & Keith Barnes
 Mr. & Mrs. Ralph Bellande
 Karen Fast & Robert Bennett
 Bob & Nell Bonaparte
 Mr. & Mrs. Jean D. Brault
 Janice Brown
 David & Jane Burleson
 Joe & Sharon Cade
 Corbet & Myra Clark
 Dennis & Gayle Collins
 Paul & Christine Cooper
 Janet Trullinger & Thomas Crawford
 Cristin Babcock & Eric Cullander
 Mr. & Mrs. Bryan M. Cullivan
 Janet Maurer & Bill Davenport
 Ms. Lori Diaz
 Linda & Nate Dickinson
 Ms. Barbara Durrett
 Dr. Robert & Kristina Fields
 Ms. Carol F. Floten
 Brad & Kami Fraley
 Victoria DeVito & Craig Fuller
 Paul & Sarah Gary
 Bob & Suzanne Greenberg
 Ms. Pauline Gregory
 Steve & Amy Haessler



▲ OES parent Margie Adams accepts the Patron's Award on behalf of herself and her husband, Tony. The Adams have been among the School's strongest supporters for the past 14 years, while their children Charlie and Katie were enrolled as OES students.

David & Wendy Hamilton
 Brian & Janice Harwood
 Ms. Alice Haskins
 Mary Michael & Kobel Haver
 Fritz & Maggie Hayes
 Delbert & Rosa Hemphill
 David & Sandra Herman
 Henry & Sharon Hewitt
 James & Carol Dey Hibbs
 Gary & Ericka Hoffman
 Dr. Gerald & Catherine Hoffman
 Dr. & Mrs. Kenneth Janoff
 Lawrence & Barbara Kaplan
 Pat & John Karamanos
 Charles & Patricia Kellogg
 Jan & Chris Kitchel
 Klaus & Sharleen Kleber
 Eckhardt & Veona Koenige
 Curtis & Mariann Koop
 Wally & Cathy Krieger
 Sean & Paige Parker Kuni
 Ed & Margaret Kushner
 Wesley & Julie Lewis
 David & Jacquie Lukens
 Elisabeth & Peter Lyon
 Mai-Lill & Rein Magi
 Bill & Cindi Marshall
 Ms. Beth Mason
 Russ & Pat Mickiewicz
 Kathleen Dodds & Matthew Miller
 Steve & Anita Mitchell
 Leslie Mackenzie & Michael Morey
 Greg & Diane Morgan
 Dr. & Mrs. Charles Morrow
 Barbara Ports & Michael Moser
 Julie Frantz & Craig Murphy
 Frank & Kathryn Nance
 Mr. John Neupert
 Dr. & Mrs. Christopher Nogueira

Sandra S. Miles & Paul E. Norman
 Paul & Mary Oldshue
 Joe & Suzie Opsahl
 Catherine Riffe & Thomas Page
 Phil & Lynne Papworth
 Ms. Faye E. Pepin
 Mark & Rosanne Perry
 Mr. & Mrs. Christopher Platt
 Frank & Carol Powers
 Patrick & Linda Radecki
 Maty & Nasrin Rahatzad
 Dr. & Mrs. David Regan
 Friderike Heuer & Daniel Reisberg
 Jeff & Kathryn Rippey
 Marc & Barbara Robins
 Tom & Susan Robinson
 Lee C. Olsen & David H. Ross
 Hiroshi & Masami Saitoh
 Loree & Ken Sakai
 Drs. John & Trudy Samples
 Mary & Jack Schunk
 Frances & Currin Snipes
 Jeff & Kathy Spere
 Mr. & Mrs. Jonathan N. Spitz
 Ernie & Erika Staley
 Judy & Steve Standring
 Linda Coffey Stone & Peter Stone
 Todd & Carrie Stucky
 Mr. & Mrs. Robert S. Sweeney
 Ned & Anne Thanhouser
 Mr. & Mrs. George R. Turney
 John & Frances von Schlegel
 Morris & Paula Westlund
 Dr. Richard & Jana Westlund
 Steve & Patty Williams
 James & Carla Wilson
 Masatoshi & Susan Yamanaka
 Ian & Kazzie Young
 Steven & Annette Zack

GIFTS

Counseling & Guidance Gifts

Mr. & Mrs. Thomas M. Landye

Development Program Improvement

These generous gifts finance the planning and initial activities of a comprehensive development program targeted at attracting, challenging and rewarding great teachers at OES.

Adams Foundation

Financial Aid Gifts

The Sisters of St. John Baptist

Friends of the Hall

Mrs. Dorothy M. Ueland

Gifts in Kind

The following donors made generous contributions of tangible property or services to the School. In kind donations are a vital source of support for OES.

Mr. & Mrs. Charles A. Adams
Richard C. & Carilyn M. Alexander
Annie Bloom's Books
Mrs. Jane Myers Armentrout
Mr. & Mrs. Ed Burton
Mr. Raleigh Butterfield

Marilyn De Vault
Dr. Dejan Dordevich
Esco Corporation
Mark & Miyoko Foster
Bob & Cherie Gregg
Kris & Steve Gregg
David & Wendy Hamilton
Henry & Sharon Hewitt
Mrs. Paula Hunger
Ms. Jane Huseby
Miss Ruth Jenkins
Jan & Chris Kitchel
Sean Kuni
Tom & Karen McClung
Curtis & Paula McCracken
Frank & Kathryn Nance
Ms. Julie Neupert
Joe & Suzie Opsahl
Drs. NG & D Orfanakis
Terry & Mei-Lin Poon
Mr. & Mrs. Richard F. Porter
Drs. Bill & Barbara Spears
Mr. & Mrs. Peter W. Stevens
Dale & Carol Stewart
Stephen & Meri Taylor
Dr. & Mrs. David TenHulzen
Mark & Helen Tochen
Ms. Barbara B. Trudel
Dale & Patricia Walhoo
Steve & Patty Williams
Richard & JoEllen Winningstad
Ms. Kelly Yustin

Lower School PE Department

Ms. Carla Heckrodt

Lower School Library Remembrance Fund

Dr. Albert F. Macho
Ms. Judith Parsons
Ms. Barbara B. Trudel
Curtis & Paula McCracken

Math Department

Mr. James Dyer

Middle School Discretionary

Craig & Jamie Austin
Jerry & Patti Doble
Mr. & Mrs. M. Malek Daaboul
Ms. Carol F. Floten
John & Susan Gundle
David & Wendy Hamilton
D.A. & Meredith Hilderbrand
Ms. Peigi Huseby
Clyte Speidel & Paul Keown
Paul & Patti Knollman
Kim & Reidun Lundgren
Robert & Pamela Matheson
Gary & Dana Ostenson
Harvey & Miriam Rogers
Joel & Sandra Shilling
Mr. & Mrs. Jay A. South
John B. & Karen A. Taylor
Dr. Richard & Jana Westlund
Mark & Leslie Workman

Residence Department Gifts

Mr. & Mrs. Lee T. Dulin

125th Anniversary Rose Garden Gifts

Mrs. Patricia Kendall Apperson

SPARC

Halton Foundation

Track & Field Program

Mr. James Dyer
Dale & Carol Stewart

Upper School Discretionary

Northwestern Mutual Life

Upper School Library Gifts

John & Deborah Chessar
Corbet & Myra Clark
Fanno Creek Friends Worship Group
Michael & Alice Greene
Steve & Amy Haessler
Ms. Susan Jensen
Patrick & Linda Radecki
Mrs. Helen F. Weber



▲ Senior Toby Menely uses resources in the US library.

Upper School Newspaper

Pam Vohnson & David Streight

Upper School Science

Mr. James Dyer
Patrick & Linda Radecki

Wetlands Biology

Metro



▲ US students in chemistry class.

GIVING BY AFFILIATION

ALUMNI

St. Helens Hall

1915 50.0%
Beatrice Thurston Paget

1919 100.0%
Anna Wheeler Hayes

1920 80.0%
Doris Henningsen Harkson
Suzanne Caswell Honeyman
Marian Jenkins
Ruth Jenkins

1922 66.7%
Eleanor Holman Burkitt
Marion Farrell Kingery

1925 25.0%
Dorothy Statter DeFrance
Catherine Mayhew Taylor

1926 36.4%
Helen Betsy Abbott
Betty Allyn May
Margaret Hall Newbegin
Louise Hosch Phelps

1928 25.0%
Marjory Holman Day
Esther Kaser Ehrman

1929 20.0%
Frances Taylor Lundberg

1930 53.3%
Elizabeth O'Reilly Barstow
Frances Stevens Gilley
Muriel Gabriel Heltzel
Marion Denton McKean
Lela Blanche Coe Meyer
Mary Luddemann Schedler
Sally Reed Stout
Helen Malarkey Thompson

1931 50.0%
Katherine Gilbert Campbell
Helen Stratton Felker
Mary Beckwith Hoffman
Rhoda Holman Statter

1932 42.9%
Elyse West Clark
Virginia Proctor Lull
Evelyn Zehntbauer Lundgren
Jane Campbell Munly
Sara-Jane Henderson Norwood
Helen Monner Ward

1933 37.5%
Betty Barr Patrick
Doreen Plympton Strong
Frances Watzek Warren

1934 33.3%
Esther Jobes Holmes
Elizabeth Watkins Jorgensen
Elizabeth Pownall Swindells
Ruth Simmonds Tunturi



▲ SHH alumna Jane Mount Ammerman '35 (shown here with her husband, Leland) in Brookings, OR during the visit of Headmaster Peter Stevens in July 1994.

1935 35.7%
Jane Mount Ammerman
Lillian Brooke Austin
Anita Cadonau Birkland
Margaret Mann Holmgren
Geraldine Hanny Sargent

1936 18.2%
Peggy Smith Newhall
Alice Freeze Warner

1937 60.0%
Jean Groves Bullwinkle
Janet Mann Crawford
Nancy Stolte Rosenfeld

1938 9.1%
Wilda Jerman Plympton

1939 20.0%
Susan Lake Howell
Susanne Ehrhardt Malone
Mary Louise Vincent Powell



▲ Members of classes from the '30's through the '80's were able to attend the first annual Arizona Alumni Gathering in April, 1994.

1940 25.0%
Georgiale Housman Coble
Marjorie Besson Fintz
Alice Moore Itz
Cozette Scott McGuire

1941 42.9%
June Fowler Clark
Katherine Jane Robinson Henshaw
Mary Sumner Jackson
Jenelyn Gaston Wessler
Connie Maguire Wilson
Rhoda Thurm Zobrist

1942 16.7%
Margaret Saari Dether
Charmian Kolar Hilleary

1943 18.2%
Mary Serruys Alfont
Sylvia Thomas Boydston



▲ St. Helens Hall graduates of 1944 gathered for their 50th reunion in June. From left, Betsy Parker Belles, Gloria Jokstad Jones, Alice Asbton Heyl, Joan Lucas Craig, and Anne Carter Brainerd.

1944 50.0%
Betsy Parker Belles
Joan Lucas Craig
Joan Irwin Green
Patricia Bendshadler Hamilton
Jean Irwin Hoffman
Gloria Jokstad Jones
Nadine Honeyman Wilhelm

1945 38.5%
Patricia Walker Ackerman
Chiane Gerow Kathrens
Molly Clair Krausse
Susan Teague Lake
Patricia Pearson Peterson

1946 50.0%
Carla Rebagliati Black
Donna Dustin Courtney
Elizabeth Kelley Crookham
Lou LaChappelle Doyle
Jean Edmonds Kortum
Barbara Henton Marontate
Florene Inglis Miller
Patricia Brock Miller

1947 6.7%
Leslie Spawn McVey

1948 33.3%
Shirley Barton
Priscilla Ann Adams Davis
Mary Orr Edson
Delight Kolar Leonard
Kathryn Huenergard Price



▲ Members of the graduating class of 1949 attended the Reunion Weekend luncheon. From left, Martha Walter Thistlethwaite, Barbara Jean Freeman Hinman, Dorothy Hays Campbell, Susan Hunt Dudley, Pat Harry Bolen, Bhradde Eversaul Collins, and Gloria Spencer Crowson.

1949 46.7%
Janet Banks
Bhradde Mae Schmand Collins
Gloria Spencer Crowson
Bonnie Dunbar Hahn
Barbara Freeman Hinman
Mary Lou Rose Johnson
Betty Charlton Labadie

1950 18.2%
Nancy Sigurdson Austin
Diane Dawson Schulz

1951 23.1%
Caroline Kuhn Meehan
June Dunbar Phillips
Floy Louise vonGroenewald Senior

GIVING BY AFFILIATION

1952 7.7%
Garland Sorenson Lewis

1953 11.1%
Cynthia Coats Railton



▲ On the OES campus for their 40th reunion were SHH graduates (from left) Marilyn Hutchings Hogrefe, Jacqueline Howard Kraft, Nancy Cannon Goodell, Jody Fields Willson, and Anne Stegner Bell.

1954 11.1%
Diana Barnard Gray

1955 44.4%
Marietta Lind Kuykendall
Sylvia Rawlinson Mathews
Jemi Cain Spriggs
Virginia Euwer Wolff

1956 22.2%
Karen Barner Anderson
Susan Dodge Moore

1957 66.7%
Norma Fisher Atkins
Kathleen Egans Braddy
Nancy Morris Feldman
Margaret Keiter Lopic
Janice Wiecks Reinmiller
Sally Soukup Salsig

1958 28.6%
Amy Fields
Nancy Walden Larsen

1959 23.1%
Sally Bowe Beaton
Patty Harriman Page
Meridel Prideaux

1960 16.7%
Carol Pope Carney
Carol Lynn Furlong Cunningham

1961 15.4%
Sally Stevens Bjerklie
Diana Fanning

1962 28.6%
Merrily Pittman Hansen
Lucy Crenshaw Imano
Randlett Walster
Vicki Webster

1963 25.0%
Judy Hill Becker
Gay Pennington Paschoal
Nan Butler Perrott
Carol Lundy Wolfe

1964 27.3%
Kathleen Sell Bafetti
Joan Lasselle
Nancy Reynolds

1965 52.4%
Nancy Bishop Dietrich
Heidi Bildsoe Hansen
Cinda Lucinda Taylor Hoffman
Katherine Jeffcott
Susie Kasper
Mary Lampson King
Lillian A. Eaton Kusiek
Natalie Giustina Newlove
Anne S. Thompson Paul
Heidi McIsaac Shuford
Jane Alice Thielsen

1966 39.3%
Sheila Maley Bates
Vickii Bublitz
Diana Beebe Buchanan
Sharon Gallentine Douglas
Katherine Karafotias
Toni Lehman
Elizabeth Marsh
Carolyn Morris Matney
Holly Pittman
Margaret Howard Singleton
Anne Stevenson

1967 25.0%
Jane Adams Patterson
Rebecca Reynolds
Mary Lou Sanford Ryan
Lee Collins Vest

1968 45.8%
Leslie Stevenson Campbell
Janis Williamson Grout
Carol Gillies Handke
Linda Thomas Hendrickson
Betty Bennett Hooton
Marcy Drain Jordan
Sarah Collins Milliken
Mia Herwin Moore
Susan Crenshaw Proudfoot
Barbara Pond Scott
Deborah McDonald Swett

1969 14.3%
Marybeth Merwin Mitchell
Libby Bishop Westlund

1970 17.6%
Nadine Christenson Carlile
Alexandra Dussin Cook
Ann Ginder Parr

1971 20.0%
Deborah LeBeck Bishop
Kathy Reynolds Janssen
Karin Randall

1972 22.2%
Bernice Stevenson Bean
Sallie Cheatham Cutler
Tami Lake Jewett
Carrie Sammons

St. Helens Junior College

1934 33.3%
Irma McPherson Rees
Flora Fetz Roholt

1935 17.4%
Maxine Van Patten Dickey
Mary Janelle Jacques
Lenore Lavanture Klink
Elizabeth Little

1936 33.3%
Janet Cutler Buchanan
Edwards Logan Edwards
Virginia Pierson Imhof
Patricia Kellogg Roberts
Doris Lincoln Trepp

1937 9.1%
Margaret Hinkle Davidson
Lois Sylvester Ingala

1938 31.8%
Anita Cadonau Birkland
Betty Lou Phelps Dunlop
Jeannette Hoss
Darlene Harris Jones
Peggy Smith Newhall
Pearl Buckler Steele
Alice Freeze Warner

1939 22.2%
Yasuko Tsuboi Fukano
Virgene Wade Gillett
Jane Merriman Gilpin
Anne Jones Taggard

1940 33.3%
Patricia Ludwick Dowling
Martha Randall Mason
Vivian McNamee
Frann Robertson Miescher
Esther Lenon Setterberg

1941 52.0%
Mary Eleanor Bedwell Bothwell
Audra Haffenden Braun
Mary Butler Bright
Jane Deacon Curry
Robin Oulton Decius
Elizabeth Arnreiter Franklin
Maxine Chu Leo
Ruth Page Lotz
Patricia Simmons Maulbetsch
Muriel Eddy McBea
Dorothy Lilly Nestelle

Helen Richards Schafer
Doris Stein Young

1942 10.5%
Nancy Hallock Jones
Kim Tanida Kanaya

1943 27.3%
Elia Leibold Bubenik
Dorothea Thomas Guynup
Rhoda Thurm Zobrist



▲ Members of the Class of 1944 JC on the occasion of their 50th reunion. From left, Marjorie Malmquist McLeod, Elise Bede Swan, Helen Mills Stoll, and Ruth Curry Rathke.

1944 9.1%
Helen Mills Stoll

1945 36.4%
Jane Greenberg Downs
June Richards Enevoldsen
Beverly Triplett Hawks
Katherine Joslin Jones

1946 33.3%
Georgeanna Adam Spencer

1947 29.4%
Barbara Needham Berglund
Beverly Hein Culp
Catherine Owens George
Jean Ehlen Morrison
May Zakoji Sakai

1948 33.3%
Patricia Kendall Apperson
Helen McKeever Chastain
Doree Carter Keller

Bishop Dagwell Hall

1967 40.0%
Rick Carpenter
Bill Marshall
James Rear
Tim Wallace

1968 44.4%
Dan Driscoll
John Flowerree
Nicholas Peachy
Ben Westlund

GIVING BY AFFILIATION

1969

Eliot Cobb
Jim O'Donnell
Paul Proudfoot
Chuck Reynolds
Richard Westlund
Mark Workman

46.2%

1970

Alan Dappen
Ken Sakai
Paul Schlesinger
Kris Van Hatcher

30.8%

1971

Cornelius Duffie
Marshall Spencer

20.0%

1972

Warren Bean
Stephen Cuffel
Andy Dappen
Fred Ellis

28.6%

Oregon Episcopal School

1973

Martha Bullwinkle Dorrell
James Mosher
Kannes Noack

15.8%



▲ Present for their 20th reunion were members of the Class of 1974. From left, Laura Maeda, Jim Weber, Liza Lilley, Heather (Joan Bokemeier), Brent Erensel, John Coffey, and Scott Harlow.

1974

Autumn Alexander-Skeen
Holly Parker Ande
Barbie Babson
John Coffey
Brent Erensel
Scott Harlow
Takashi Hashimoto
Heather (Joan Bokemeier)
Kathy Banks Kelly
Liza Lilley
Max Miller
Tammy Selfridge Musser
Osa Arnold Schultz
Richard Talbot
James W. Weber
John Wysham

55.2%

1975

Jean Duffie Benedict
Susan Brustad Christensen
Lynea George Davis
Barbara Bolton Hopewell
Ellen Montague Kuzlik
Chris McMurtry
Meg Rogers
Morris Westlund
Nancy Woodworth Young

34.6%



▲ Future OES graduate? Joanne Winningstad Anderson '76 and her husband Glenn are the proud parents of Gail Marie Anderson, born in October 1993.

1976

Perri Ann Combs-Taber
Ed Stevens
Allie Zimmer-Harmon

17.6%

1977

Becky Grimes Gilmore
Eric Kobbe
Jenny Holtz Seton
Bob Smith
Susanna Dant Soper

18.5%

1978

Geoff Chew
Daniel Corona
Doug Kezeor
Susan Krohn Koe

19.0%



▲ Helga Daret, who taught at SHH and OES for more than thirty years, was presented with the Honorary Alumni Award for 1993-94 by Alumni Association President Sean Kuni '81.

1979

Tom Bice
Norma Dulin
Maggie Groening
Kevin Kraft
Susan Eckhardt Purcell
Clenton Richardson
Katharine Sammons
Daphne Wysham

34.8%

1980

Beresford Paul Daigle
Melanie Ellison
Ashley Kirkman
Petra Wandel-Pine
Mike Shepherd
Brenda Graves Wiens

20.7%

1981

Drue Ferguson
Marleine Hofmann
Sean Kuni
Sarah Stephenson
Kathleen Douglas Van Every

20.8%



▲ Graduates from the 80's reunited in Longview, WA on the occasion of the marriage of Giles Thompson '88 to Marie Lorraine. Giles and Marie's son Lewis Thompson was also baptized by Father Roy Coulter on this special day.

1982

Steve Eckhardt
Ann Highet
Shannon Mong Joseph
Christine Menefee

23.5%

1983

Kelly Dwyer
Jon Grodem

11.1%

1984

Marci Lematta Abel
Deirdre Dobbins Harrington
Thom Hayes
Paige Parker Kuni
Duane H. Laun
Jack McCann

27.3%

1985

Jennifer Gentry
James Isaak
Helen Kirschner
Greg Simon

20.0%

1986

Debbie Rath Kennison
Percy Webster

7.1%

1987

Chelsea Emery
Aimee Froom
Scott Klemp

7.3%

1988

Ayden Adler
Meredith Boatsman
Brinton Clark
Heather Harrison
Courtney Boatsman Howard
Tiffani Lee
Laura Wade Matthes
Sandy Nantt
Lance Steinberg

22.9%

1989

Margaret Nichols
Mary Waite

5.0%

1990

Ashleigh Asaph
Matt Clark
Kuniko Kurisu
Marie-Claire Vohnson-Streight

10.3%

1991

Andrea Bell
Sherrill Bennington
Martin Bleack
Clair Clark
Sharon Gebbie
Roman Zawodny

13.6%

1992

Shannon Dooley
Tara Sorensen

4.3%

1993

Cam Freres
Kevin Holliday
Tom Tewksbury
Laura Wallace

9.3%



▲ Former faculty from SHH, BDH and OES gathered on the occasion of the 1994 Reunion Weekend on the OES campus. Pictured are The Rev. Frank Etnenson, Gary Craigmoles, Lenore Klink, Eleanor Fass, Fred Wood, Candi Palmer, Helga Daret, and Carl Reynolds.

GIVING BY AFFILIATION

PAST PARENTS

Dr. & Mrs. James W. Asaph
 Stephen E. & Melissa N. Babson
 Mr. & Mrs. Ralph Bellande
 Dr. & Mrs. John Berwind
 Dr. & Mrs. Robert W. Blakeley
 Harley & Lynn Boatsman
 Mr. & Mrs. Theodore H. Bokemeier
 James & Betty Bosen
 William Den Beste & Ethelwyn
 Bowler
 William M. & Bonnie A. Brod
 Ann & Dave G. Bronson Jr.
 Mr. & Mrs. Dave Brooks
 Mr. Harry Bruss
 Drs. Moir & Sudge Budden
 Mrs. Jean Groves Bullwinkle
 Mrs. Eleanor Burkitt
 Mr. & Mrs. Ed Burton
 Joyce Atlee Campbell
 Mrs. Alyce Cheatham
 Mr. & Mrs. Mark Childs
 Dr. & Mrs. Edgar Clark
 Mrs. George W. Conklin
 Don & JoAnn Cornell
 The Very Rev. & Mrs. Roy Coulter
 Mrs. Kuniko de Weese
 Harry & Merry Demarest
 Mr. Harry A. Dick Jr.
 Mr. & Mrs. Paul Diment
 John & Lillian Douglas
 Mrs. Nancy Doulis
 Cecil & Sally Drinkward
 Ms. Nancy Duggan
 Mr. & Mrs. Lee T. Dulin
 Mr. Henry M. Emery
 Mrs. Susan Woodruff Emery
 Ms. Kathryn Engholm
 Ms. Bertha M. Ferran
 Dr. & Mrs. Bruce D. Fiske
 Mrs. Norman W. Frink Sr.
 Dr. & Mrs. Donald W. Froom
 Judge Helen J. Frye
 Drs. Michael & Barbara Gaines
 Michael & Clara Gamache
 Richard & Janet H. Geary
 Mr. Jon Geffen
 Mr. & Mrs. Paul Gerhardt
 Michael & Sidney Gold
 Mr. & Mrs. Richard Graves
 Robert & Nancy Gray
 Mr. & Mrs. George Grimes
 Mr. & Mrs. Robert E. Grissom
 Mrs. Gail Bitar Grodem
 Howard & Molly Harris
 Mrs. Betty Lou Hatcher
 T. David & Gerri Hayes
 Mrs. Peter Hoffman
 Mr. & Mrs. Robert A. Holmstrom
 Mr. & Mrs. James Holtz
 Ms. Betty Hooton
 Henry & Susan Jakubiak
 Marion & Gordon Janney
 Bill & Marcia Johnson
 Mrs. Peggy Karafotias
 Mr. & Mrs. Richard B. Keller
 Mrs. George A.D. Kerr

William G. Kirkman
 Mr. & Mrs. Richard Kohnstamm
 Wayne & Joan Kuni
 Mr. & Mrs. Hoichi Kurisu
 Mr. & Mrs. Tsutomu Kyuzaki
 Mr. & Mrs. W.R. Lake Jr.
 Mr. & Mrs. Thomas M. Landye
 Jamie & Joanna Langdale
 Wes & Nancy Lematta
 Drs. Fernando & Dolores Leon
 Dana Mosher Lewis
 Dr. Caroline Litzenberger
 Sylvia & John Mathews
 John & Gail McAllister
 Mr. & Mrs. Donald McClave
 Curtis & Paula McCracken
 Mrs. Mary H. Naab
 The Rev. David Pace
 Mr. Gary R. Pope
 Mr. & Mrs. Richard F. Porter
 Mr. & Mrs. Ellsworth D. Purdy
 Mr. Dale B. Ramerman
 Richard & Louise Rawlinson
 Mr. & Mrs. Edward Rubovits



▲ OES students in chapel service at St. John's Parish on the OES campus.

Mr. & Mrs. William Sakai
 Ivan & Ruth Sandoz
 Mrs. Joyce Schafer
 Howard W. & Eileen E. Schleppe
 Michael & Karen Sherman
 Mrs. Katherine Solka
 Mr. & Mrs. Douglas H. Stearns
 Robert & Wendy Steinberg
 Leigh D. & Mary G. Stephenson
 Mr. & Mrs. Wm. T. C. Stevens
 Pam Vohnson & David Streight
 Mrs. Richard C. Tevis
 Mark & Helen Tochen
 Mr. & Mrs. Henry Townend
 Mr. & Mrs. Charles W. Tuttle Jr.
 Mrs. Dorothy M. Ueland
 Ed & Wendy Ulman
 John & Kathy Utz
 Mr. & Mrs. R.A. Vitousek Jr.
 Dale & Patricia Walwood
 Mrs. Helen F. Weber
 Darrell Clukey & Sherrill Whittemore
 Lynne Parise & Mark Williams
 Prof. J.K. & La Rae Zawodny
 Milton & Jean Zell
 Mr. John L. Zenor
 Carol Zosel & Charles Harper



▲ Former OES parents Sally Drinkward (now an OES grandparent) and Ed Clark.

GRANDPARENTS

Mr. & Mrs. John Adams
 Mr. & Ms. David Bailey
 Mrs. Ned Barclay Ball
 Mrs. Mary Ellen Bechen
 Mr. William E. Bethards
 Dr. Anita Cadonau Birkland
 Mr. Garth M. Brodie
 Mrs. Barbara Towne Brown
 Mrs. Eleanor Burkitt
 Leonard & Virginia Cain
 Mrs. Alyce Cheatham
 Mr. & Mrs. F.N. Creakman
 Mrs. H. Lennox H. Dick
 Cecil & Sally Drinkward
 Mrs. Maria A. Elwell
 Mr. & Mrs. Donald G. Findlay
 Mr. Robert T. Foote
 Dr. Merle Frampton
 Mrs. Beverly Goldberg
 Mr. & Mrs. Harold Gray Sr.
 Mrs. Carlos Hamilton
 Mr. & Mrs. James Harder
 Ms. Alice Haskins
 Mrs. Betty Lou Hatcher
 John & Jean Hedberg
 Jim & Barbara Herbold
 M.E. & Loraine Hesla
 Mr. & Mrs. Walter M. Higgins
 Mrs. M.B. Hoffman
 Mr. & Mrs. Norman Holm
 Anne & Brantley Holt
 Mr. & Mrs. John Hryniw
 Ms. Jane Huseby
 Mr. John Karamanos Jr.
 The Rev. Orme Kellest
 August & Mallie Kollom
 Wayne & Joan Kuni
 Mike & Mildred Lillpop
 Mrs. C.L. Lindquist
 Mrs. J. Harold Lineberger
 Mr. Harry Loggan
 Mr. & Ms. John Longfield
 Mr. & Mrs. William Lukens
 Mrs. Agnes L. Lundberg
 Mrs. Evelyn Z. Lundgren
 Mr. & Mrs. Robert A. Maurer
 Mrs. Linita McDonald
 Mr. & Mrs. John F. McLain
 Mr. George E. Moller

Miri Lou Davis & Carter Morey
 Mrs. Frances A. Morgan
 Mrs. Lloyd Myers
 Mr. & Mrs. Harry Namba
 Mr. & Mrs. William Nance
 Mrs. Margaret Hall Newbegin
 Ms. Margaret L. Newhall
 Howard & Monta Osborne
 Dr. & Mrs. David Osgood
 Ms. Shirley Patterson
 Mrs. Lois Plawchan
 Ms. Helen Ports
 Ms. Betty S. Reardon
 Mr. & Mrs. Joe Robertson
 Dr. & Mrs. George Robins
 Ms. Elizabeth B. Robinson
 Mr. & Mrs. William Sakai
 Frank W. & Betty R. Scheible
 Mr. & Mrs. Guerry R. Smith
 John & Elizabeth Smith
 Mr. & Mrs. Robert Wm. Smith
 Russ & Donna Spere
 Mr. & Mrs. Wm. T. C. Stevens
 Mr. & Mrs. Thomas D. Taylor
 Ms. Kay V. Thomas
 Ms. Jackie L. Thompson
 Jean Lawrence Thorpe
 Mr. & Mrs. Richard Tooze
 Mrs. Ruth B. Turney
 Mr. & Mrs. Seymour Waldman
 Mr. & Mrs. Frank M. Warren Sr.
 Mr. & Mrs. A.O. Watson
 Mr. & Mrs. Robert Wechsler
 Mr. & Ms. Gunther Weiss
 Bill & Barbara White
 Mrs. Jane Adams Whitney
 Ms. Jo Williams
 Mr. & Mrs. Norman A. Workman
 George & Eleanor Zendt



▲ Norm Winningstad, father of Joanne Winningstad Anderson '76 and grandparent of current OES students, 10th grader Allison, 7th graders Christopher and Dennis and 3rd grader Rachel.

GIVING BY AFFILIATION

FACULTY & STAFF

Rose Bardel
 Sherrie Barss
 Bradley Baugher
 Donna Beemer
 Maggie Bellafronto
 Robert L. Beyer
 Cassandra Bowman
 Stephen Brown
 Kathleen Burwash
 Sharon Cade
 Sandra Cade
 Norene Calkins
 John Capen
 Anne Cass
 Charyl Cathey
 Michele Cathey
 Linda Chavez
 Diana Chenoweth
 Corbet Clark
 Donna Cody
 Coleen Conkey
 Marilyn Connell
 Michael N. Cook
 Scott Corris
 The Very Rev. Roy Coulter
 Gary Crossman
 Michael Devenney
 Finn Dollis
 Cynthia Doran
 Nancy Doulis
 Alyce Drescher
 Nancy Dunn
 Leona Erickson
 Charles R. Farrell
 Diane Flack
 Jim Fleury
 Joan Foy
 Pat Freeman
 Robbi Garvin
 Viktor Gavrilin
 John Gawlista
 Michelle Ghattas
 Claire Gilbert
 Sidney Gold
 David Goodman-Farley
 Joel Gray
 Nancy Gray
 Bernice Greenfield
 Hamilton Gregg
 Kris Gregg
 Katherine Gross
 Terry Hansen
 Gary Havlik
 Patty Heath
 Rosa Hemphill
 Imogene Hollis
 Toni Holmberg
 Paula Hunger
 Janelle Janutka
 Susan Jensen
 Jane Kenney-Norberg
 John H. Kerlake
 Jane Kirkpatrick
 Helen M. Kirschner

Sue Knight
 Elizabeth Kortenhot
 William Lamb
 Sue Larson
 John LeCavalier
 Allan Lehman
 Joan Leigh
 Constance Leonard
 Dana Mosher Lewis
 Helen Linster
 Yefim Litinetsky
 Edward Liu
 Chris Locke
 Kate Loggan
 Darele Lowry
 Thelma Lowry
 Judy Lynch
 Matthew Lyon
 Jeff Marsh
 Troy Marsh
 Cindi Marshall
 Craig McClure
 Debbie McNeely
 Diane Meade
 Christina Meyerhoff
 Joyce Mijo
 Lilly Moore
 Karen Murray
 Kathy Narramore
 Sue Nicol
 Jack O'Brien
 Jimm Omodt
 The Rev. David Pace
 Louis H. Paff
 Jean Patsis
 LouAnn Pickering
 Gary R. Pope
 Eileen M. Preston
 Edward Purdy
 Anne S. Robinson
 Rothrock
 Nancy Rubovits
 Lynne Sadler
 Mary W. Sapp
 Joyce Schafer
 Joan Schaller
 Debby Schaffler
 Karen Seder
 Elaine Seeley
 Florence Selvidge
 Moneeka Settles
 Richard Sherwood
 Bev Shue



▲ US science teacher Bob Beyer retired this year after working at OES for six years.

Alice K. Simpson
 Paula Spooner
 Bonnie Stanke
 Susan Stark
 Tye Steinbach
 Hope Stevens
 Peter W. Stevens
 Linda Stewart
 Shelley Stoffer
 David Streight
 Pam Vohnson
 Karen Talus
 Jay Thomas
 Maurice Thompson
 Becky Tooley
 Luba Tuck
 Kris Van Hatcher
 Barbara Vardanega
 Jon von Behren
 Samuel Wagner
 Thomas Wakeling
 Patricia Walhood
 Mary Warinner
 Shelley Weiller
 Robin Weitzer
 Douglas Whitmore
 Laura Wilson
 Marie Winston
 Stephen Wong
 Sylvia Wood
 Cherie Yokota
 Kelly Yustin
 Harvey Zendt
 Louisa Zendt
 Carol Zosel

FRIENDS

Herbert & Iris Arnett
 Kay & Dave Bristow
 Mr. Raleigh Butterfield
 Mr. & Mrs. Robert A. Chumbook
 Ms. Barbara Davis
 Dr. Dejan Dordevich
 Mr. & Mrs. William W. Dunlap
 William Seifert Jr.
 Fanno Creek Friends Worship Group
 Mrs. Dwight Follett
 Mrs. Florence Fuller
 Mr. A. Bruce Hallock
 Mr. & Mrs. Norman Hammerstly
 Ms. Carla Heckrodt
 John & Barbara Heffernan
 Ms. Maryanne Hill
 Sue & Tom Horstmann
 Mr. Donald Horton
 Mrs. Dorothy Sloan Huey
 Mrs. Louise James
 Mrs. Sally Walsh Johnson
 Mr. John Halsey Jones
 Mr. Marion W. Jones
 Mr. & Mrs. Harold H. Keil
 James & Mary Kruchoski
 Mr. R.G. LaFollette
 Ms. Helena G. Barbey Lankton
 Mrs. Georgia T. Lekas
 Mrs. Mary Ellen Lynd
 Dr. Albert F. Macho

Lady McDonald
 Capt. Joseph M.
 McDowell, U.S.N. (Ret.)
 Mary Meade
 Ellen Lanier-Phelps
 Metro
 Mr. & Mrs. Kenneth R. Meyer
 Mr. Richard Meyer
 Mrs. Elizabeth Netcher
 OES Men's Over 30 Basketball Team
 Mr. & Mrs. Monford Orloff
 Thomas & Victoria Oxholm
 Ms. Judith Parsons
 Ms. Sharon K. Paz
 Mr. & Mrs. Alfred D. Scarbrough
 Mr. Jordan D. Schnitzer
 Mr. & Mrs. Richard Schuurman
 Waldemar & Patricia Seton
 Mr. Paul B. Smith
 The Sisters of St. John Baptist
 Mrs. William Tegart
 Ms. Barbara B. Trudel
 Mr. & Mrs. George R. Turney
 Ms. Virginia D. Tyler
 Ms. Judith Clarke Visnick
 Mr. Hugh Walker
 Mr. & Mrs. Charles L. Warren
 Jill & Ted Welsh
 Mrs. Betty Jo Wright

CORPORATIONS/ FOUNDATIONS

Adams Foundation
 Annie Bloom's Books
 Aon Corporation
 The Bank of New York
 The Boeing Company
 Estate of Spencer R. Collins
 Cray Research Inc.
 Esco Corporation
 Henry Failing Fund
 The Farago Foundation
 Floweree Foundation
 GTE Foundation
 Halton Foundation
 The Ralph & Adolph Jacobs
 Foundation
 James River Corporation
 Jewett, Barton, Leavy & Kern
 S.S. Johnson Foundation
 Kemper Securities, Inc.
 James A. & Fannie E. Malarkey
 Foundation
 May Dept. Stores Co. Foundation
 Merrill Lynch & Co.
 Nike/Inc.
 Northwestern Mutual Life
 Persis Hawaii Foundation
 PPG Industries Foundation
 Prudential Securities
 The Reebok Foundation
 Thomas D. Taylor Foundation
 Tektronix Foundation
 US WEST Foundation
 Washington Mutual
 West One Bank

VOLUNTEERS AND SPECIAL EVENTS



▲ *Volunteers' Common Link Chair Anne Thanbouser at the OES Fund Kickoff Luncheon, 1993.*

THE VOLUNTEERS' COMMON LINK AND PARENT ASSOCIATION LINKS

The Volunteers' Common Link, the all-OES volunteer coordinating committee, oversees the volunteer program at OES and acts as the communication link for community-wide interests and activities in cooperation with the Parent Association Links (PALs), School administration, and the OES Board of Trustees. OES is indebted to its community of volunteers, who contribute so much time and effort to the School.

Volunteers' Common Link Members

Anne Thanbouser, *Chair*
 Katie Garvie, *Chair of Volunteers*
 Kathy Brault, *Treasurer*
 Sharon Hewitt, *Secretary*
 Judy Jensen, *Community Parent Education*
 Sue Russell and Alice Greene (US)
 Cherie Gregg and Meredith Hilderbrand (MS)
 Sandra Miles and Masami Saitoh (LS), *Community Social Events*
 Carla Wilson, *Volunteer Office Computer Operations*
 Darlene Kaempf, *Chair US PAL*
 Margie Adams, *US PAL Parent Education*
 Candy Snyder, *US PAL Volunteer Coordinator*
 Carol Floten, Pam Matheson, Patti Knollman, Jana Westlund
Co-Chairs MS PAL

Sue Gundle, *MS PAL Volunteer Coordinator*
 Leslie Workman, *Chair LS PAL*
 Kay Brantley, *LS PAL Volunteer Coordinator*

Parent Association Link Officers and Committee Chairs

Kathleen Ames
 Margie Adams
 Karen Alford
 Kay Brantley
 Jane Burlison
 Chris Cooper
 Judy Crow
 Linda Dickenson
 Julie Drinkward
 Barbara Durrett
 Sally Fish
 Carol Floten
 Karen Grauert
 Lynne Greenberg
 Pauline Gregory
 Sharon Hewitt
 Jan Hibbard
 Ginger Iles
 Darlene Kaempf
 Sharleen Kleber
 Patti Knollman
 Mary Laird
 Christi Lee
 Cathy Jo Lindquist
 Pam Matheson
 Atsuko Matsuyama
 Dawn Milliron
 Judy Moreland
 Diane Morgan
 Dana Ostenson
 Miriam Rogers
 Chris Reynolds
 Mary Sapp
 Candy Snyder
 Adrienne Souther
 Clyde Speidel
 Gail Sweeney
 Janet Trullinger
 Jana Westlund
 Leslie Workman
 Annette Zack



▲ *OES volunteers organize many of the activities for the School community, including the annual LS Halloween party.*



▲ *Sean Kuni '81, 1993-94 Alumni Association President.*

OES ALUMNI ASSOCIATION

The 1993-94 OES Alumni Association had a wonderful year! Record breaking numbers of alumni attended Founders' Day, a new Alumni Directory was printed (the first in 13 years!) three regional alumni events were held in San Francisco, Seattle and Tucson, and many new and existing activities were enjoyed by alumni of all ages. The strength of the Alumni Association continues to grow with the energy and support of all the Alumni Board members!

Mr. Sean Kuni '81, *President*
 Ms. Elizabeth Lilley '74,
Vice President
 Mrs. Patricia Kendall
 Apperson '48 JC
 Mrs. Meg Finch Bishop '77
 Mr. P. Beresford Daigle '80
 Mrs. Marjory Holman Day '28
 Ms. Marilyn De Vault '67
 Ms. Kelly Dwyer '83
 Mrs. Nancy Morris Feldman '57
 Mrs. Helen Stratton Felker '31
 Mr. Chris Johnson '79
 Mr. Jack McCann Jr. '84
 Mrs. Sandy Nantt '88
 Ms. Meridel Prideaux '59,
Former President
 Mrs. Janice Wiecks Reinmiller '57
 Mr. Greg Simon '85
 Mrs. Alice K. Trehwella '41
 Ms. Alexandra Zimmer-Harmon '76

CLASS AGENTS

The second year of the class agent program was a successful one with more alumni serving as their class agents and contributing to the OES FUND. From Portland to New York, our class agent program is going strong. Thank you to the all of the class agents for their time and dedication to the School and their class!



▲ *1993-94 OES Fund Chair, Pat Karamanos*

Patricia Kendall Apperson '48
 Norma Fisher Atkins '57
 Sylvia Thomas Boydston '43
 Courtney Brown '92
 Jean Groves Bullwinkle '37
 Katharine Gilbert Campbell '31
 Daniel Corona '78
 P. Beresford Daigle '80
 Marjory Holman Day '28
 Daniel Diman '92
 Martha Bullwinkle Dorrell '73
 Brent B. Erensel '74
 Gloria Smith Flaherty '47
 Janis Williamson Grout '68
 Mary-Helen Duffy Hansen '45 JC
 Caroline Haskins Hargis '40 JC
 Robert S. Holden '79
 Susan Lake Howell '39
 Lucy Crenshaw Imano '62
 Ruth Jenkins '20
 Shannon Mong Joseph '82
 Katherine Karafotias '66
 Susie Kasper '65
 Paige Parker Kuni '84
 Nancy Walden Larsen '58
 Julie Mack '60
 Bill Marshall '67
 Martha Randall Mason '40
 Marion Denton McKean '30
 Florene Inglis Miller '46
 Marybeth Merwin Mitchell '69
 Jane Campbell Munly '32

VOLUNTEERS AND SPECIAL EVENTS

Sandy Douthit Nannt '88
Margaret Smith Newhall '36 & 38 JC
Betsy Bosen Parris '83
Amaryllis Lilles Powell '49
Meridel J. Prideaux '59
R. E. Clenton Richardson '79
Paul R. Schlesinger '70
Winde Bekins Strachan '86
Tom Tewksbury '93
Doris Lincoln Trepp '36 JC
Marie-Claire Vohnson-Streight '90
Virginia Euwer Wolff '55
Nancy Woodworth Young '75
Alexandra Zimmer-Harmon '76
William Thurm
Zobrist Jr. '41 & 43 JC



▲ Members of the 1993-94 *Where the Wild Things Are* Auction committee gear up for the festivities.

AUCTION

Half of the proceeds from the *Where the Wild Things Are* Auction will go towards the Edward E. Ford Endowment Fund. Income from the Endowment supports the professional growth and development activities of our outstanding faculty and staff. The other half of the proceeds will have an immediate effect on faculty growth and development. It will be added to the School's 1994-95 operation budget to pay for conferences, graduate study, professional leave, research, and collaborative pedagogical efforts. Thanks to all of the parents, alumni, trustees, businesses and special friends who joined in this "wild" effort to support our faculty and staff.



▲ Wendy Hamilton, chair of the 1993-94 *Where the Wild Things Are* Auction committee.

Where the Wild Things Are Board of Directors

Auction Chair:
Wendy Hamilton

Secretary/Publicity:
Clyte Speidel

Office of Operations/Control:
Carla Wilson

Acquisitions:
Lori Diaz, Kami Fraley

Oral Auction:
Suzanne Regan

Silent Auction:
Miriam Rogers, Julie Drinkward

Treasurer:
Carol Floten

Invitations/Reservations:
Linda Dickinson

Advertising:
Daisy Housel-Miller

Catalog:
Cathy Krieger

Decorations:
Cheryl Carrier, Suzanne James

Food and Beverage:
Sheryl Acheson

Special Events:
Chris Cooper

Volunteers/Clean Up:
Fran von Schlegell

Will Call/Pick Up:
Patti Knollman

Volunteers

Karen Alford
Kathleen Ames
Sharon Barnes
Dana Berger
Kay Brantley

Kathy Brault
Sharon Cade
Norene Calkins
Mike Carrier
Bob Cassidy
Jan Cassidy
Charyl Cathey
Nancy Chapman
Diana Chenowith
Donna Cody
Gayle Collins
Sara Cowie
Laurie Crossman
Judy Crow
Bill Davenport
Sherry Davis
Kate Dickinson
Natalie Dickinson
Nate Dickinson
Harriett Dixon
John Dixon
Kathy Dodds
Wayne Drinkward
Barbara Durrett
Marna Elliot
Lynne Enyeart
David Farris
Kendra Farris
Diane Flack
Pat Freeman
John Garvie
Katie Garvie
Sidney Gold
Karen Grauert
Bob Greenberg
Suzanne Greenberg
Alice Greene
Hamilton Gregg
Susan Gundie
Amy Haessler
Steve Haessler
Bob Hale
Kelly Hale
Friderike Heuer
Paula Hunger
Janelle Janutka
Pat Karamanos
Paul Keown
Helen Kirschner
Paul Knollman
Elizabeth Kortenhof
Paige Kuni
Sean Kuni
John LeCavalier
Connie Leonard
Chris Locke
Matt Lyon
Leslie Mackenzie
Cindy Marshall
Janet Maurer
Matt Miller
Mickey Morey
Kathryn Nance
Lee Olsen
Dana Ostenson
Lou Paff
Jean Patsis
Faye Pepin
Christopher Platt

Kelley Platt
David Regan
Jeff Rippey
Kathryn Rippey
Anne Robinson
Susan Robinson
Harvey Rogers
David Rogoway
Lori Rogoway
Rothrock
Loree Sakai
Karen Seder
Patsy Seeley
Alice Simpson
Adrienne Souther
Sue Stark
Linda Stewart
Shelley Stoffer
Carrie Stuckey
Karen Taylor
Anne Thanhouser
Najla Totonchy
Janet Trullinger
John von Schlegell
Mary Warinner
Syd Waskey
Jana Westlund
Paula Westlund
Doug Whitmore
Jane Winger
Leslie Workman
Cherie Yokota
Louisa Zendt



▲ Former OES parents Ray Town and Janet Geary were among the revelers at the *Wild Things Auction*.

Where The Wild Things Are Donors

5th Grade Aardvark Artist Group
7A Ranches
Sheryl & Kip Acheson
Ackroyd Photography
Lucinda Davidson Agre L.M.T.
Dr. & Mrs. Aftab Ahmad
All Sports Cards
Amadeus at the Fernwood
Amalfi's Inc.
American Express Travel
Service, Portland

VOLUNTEERS AND SPECIAL EVENTS

Robert & Kathleen Ames
 Anna Designer Fabric
 Annie Bloom's Books
 Arthur Andersen & Co.
 Athletic Club of Bend
 Keith & Sharon Barnes
 BDii
 Beaverton Auto Parts
 Beaverton Batting Cage
 Beaverton Book Company
 Peter & Missy Bechen
 Donna Beemer
 Beginning School Faculty & Staff
 Benihana's of Tokyo
 Adeline Birkholz



▲ OES parent Charles Williams encourages the auction crowd to bid on an evening in a Trailblazer skybox, donated by Peter and Missy Bechen.

Black Butte Stables, Inc.
 Michael Bolton
 Bowdacious Kids
 Erin Boyle
 Kay & Marty Brantley
 Jean & Kathy Brault
 Bridgeport Brewing
 The Brinegar Family
 Tracy Brod
 Dorothy Brumder Foote
 Mary Burgess
 Burlingame Market:
 Tom & Jackie Calkins
 Dr. & Mrs. Bussman
 Joe & Sharon Cade
 Norene Calkins
 Leslie Campbell
 Carla Cares
 Leslin Carlson
 Carson Oil Company
 Anne & Richard Cass
 Charyl Cathey
 Nancy & Richard Chapman
 Deb Chessar
 Chuck E. Cheese's Pizzatime Theater
 Ed & Janet Clark
 Myra Clark

Philip Clark
 Cocoa Mill Music
 Donna Cody
 Michael & Pamela Coffeen
 Dennis H., Gayle & Jessica Collins
 Marilyn Connell
 Chris & Paul Cooper
 Scott Corris
 Cosmic Faces Facepainting -
 Sascha Gordon
 John & Ann Coulter
 The Very Rev. C. Roy Coulter
 Country Gardens
 Sarah Cowie
 Creative Images Photography
 Gary Crossman
 Annie Cruz
 Fernanda D'Agostino
 Mary Davis
 Demetri's Mediterranean
 Dennis Uniform
 Martha Denniston
 Mike DePalmer
 Designs in Clay - Theresa Smith
 Details by Patricia Green
 Mike Devenney
 Linda & Nate Dickinson
 Discovery Zone
 Kathy Dodds & Matt Miller
 Stephen & Tina Donovan
 Cynthia K. Doran
 Ulla & John Drell
 Alyce Drescher
 Cecil & Sally Drinkward
 Wayne & Julie Drinkward
 Barbara P. & Taylor Durrett
 Bob Durst
 Durst's Thriftway Market
 Bruce Eaton & Diane Daley-Eaton
 Richard Elden
 Elizabeth Leach Gallery
 Lou, Marna & Jordan Elliot
 Embry & Co.
 Ron & Lynne Enyeart
 The Ethix Corporation
 Steven & Nancy Eyler
 Family Brands
 Susan & Paul Farago
 Farrell's Ice Cream
 Kendra & David Farris
 First Interstate Bank
 Carol Floten
 Storm Floten
 Robert Foote
 Brian Foulkes
 Four Seasons Bowling Center
 Joan & Dwight Foy
 Ted & Diane Freres
 G.I. Joes - The Sports and Auto Store
 Barbara & Michael Gaines
 Sarah & Paul Gary
 Gerald's
 Sean & Debbie Gilronan
 Ginger & Pickles Bookstore
 Sidney Gold
 Nancy Gray
 Ken & Rande Greenbaum
 Bob & Suzanne Greenberg
 Hamilton Gregg

Kris Gregg
 Kathy Gross
 Bob & Jennifer Groves
 John & Susan Gundle
 Hall Street Bar & Grill
 Roger Hallin
 Halton Company:
 Mr. & Mrs. William Findlay
 David & Wendy Hamilton
 Harder Mechanical Contractors
 Michael Allen Harrison
 Harry Ritchie Jewelers
 Brian & Janice Harwood
 Sandy & Jeri Haskins
 Cynthea Hayakawa
 The Heathman Hotel
 Claudia Hegberg
 Sharon & Henry Hewitt
 Jim Hibbs
 Meredith & D.A. Hilderbrand
 Hillsboro SkateWorld
 Hobby Warehouse
 Cindy & Gregg Hoffman
 Mary Hoffman
 Becky Holder
 Home Depot
 Hood River Inn
 Hood River Windsurfing
 House of Louie Restaurant
 House on the Metolius
 Lucy & Doug Houser
 Laura Hoyt
 The Hutchinson Family
 Ginger Iles
 Inn of the 7th Mountain
 Izzy's Pizza Restaurant
 Joseph & Colleen Jannuzzi
 JBL & K Associates
 Susan Jensen
 Michael & Darlene Kaempf

Wally & Cathy Krieger
 Kulu Farm
 KUNI Cadillac•BMW
 Sean Kuni
 The Laird Family
 Lake Grove Veterinary Clinic
 Lakeside Gifts
 Langdown FLorist & Greenhouses
 Lapstar, Inc. - Jai Kirwan, President
 LaRog Jewelers
 Sue Larson
 Learn to Swim
 Allan Lehman
 Dick Lenker
 Connie Leonard
 Dana Lewis
 Linacum Corporation
 Carole Lindell-Ross
 Lithtex Printing
 Lloyd Center Ice Pavilion
 Kate Loggan
 Lonesomeville
 Priscilla & John Longfield
 Lower School PAL
 Kari Lundgren
 Kim & Reidun Lundgren
 Judy Lynch
 Elisabeth & Peter Lyon
 Matthew Lyon
 Leslie Mackenzie
 Magic Mountain Ski Club
 Malibu Grand Prix
 Marco's Cafe
 Henrik, Britt & Pernille Martens
 Beth Mason Atty.
 The Mathesons
 Meier and Frank
 Christina Meyerhoff
 James Miller & Laurie Hesla
 Lynn & Scott Miller



▲ OES parents Susan and Tom Robinson participate in the bidding.

Pat & John Karamanos
 Paul, Clyde & Brice Keown
 Kidder Peabody
 Jane Kirkpatrick
 Klaus & Sharleen Kleber
 Sue Knight
 The Kobos Company: David Kobos
 Mariann & Curtis Koop
 Elizabeth Kortenhof
 Hamilton Gregg

Ted & Daisy Miller
 Drs. Miller, Hesla and Associates
 Miller, Nash, Wiener, Hager & Carsen
 Monograms Today
 Lilly Moore
 Mickey Morey
 Diane & Greg Morgan
 Linda Morgan
 Mrs. Calkin's Third Grade Class

VOLUNTEERS AND SPECIAL EVENTS



▲ OES parents Mimi Williams, Linda Morgan and Jana Westlund take a break from the festivities to pose for a photograph.

Mrs. Cody's/Mrs. Gross' Third Grade
 Mrs. Connell's First Grade
 Mrs. Drescher's First Grade
 Mrs. Kirkpatrick's First Grade
 Mrs. Larson's Third Grade Class
 Mrs. Linster's Kindergarten
 Mrs. Marshall's Kindergarten
 Mrs. Winston's/Mrs. Murray's
 Pre-K Class
 Mrs. Yokota's Kindergarten
 Mt. Bachelor Ski and Summer Resort
 Mt. Hood Meadows Ski Resort
 Name That Toon Japan:
 Masami Saitoh
 Frank & Kathryn Nance
 Napp Trust
 Scott, Susan & Sarah Nicol
 Norm Stoll School of Dance
 Northwest Legends Salon
 The Oak Mill
 Oaks Park Association
 Objects of Desire - A Collection of
 Necessary Luxuries
 OES Alumni Board
 OES Girls' Soccer Team
 OES Student Store
 OES Summer Program
 The Old Spaghetti Factory
 The Olive Garden
 Jimm Omodt
 Oregon Ballet Theatre
 Oregon Golf Club
 Oregon Gymnastics Academy
 Oregon Mountain Community
 Oregon Shakespeare Festival
 Gary & Dana Ostenson
 Outdoor Traders
 Pacific Products
 Pacific Rim Martial Arts Academy
 Packouz Jewelers
 Paul V. Herren Catering
 Phil & Lynne Papworth
 Parr Lumber Company - Cedar Hills
 Patricia Reidel Travel
 Jane Patsis
 Pete Stone Photography

Drs. John Phillips &
 June Dunbar Phillips
 Lou Ann Pickering
 Pizzicato Gourmet Pizza
 Ponzi Vineyards
 Gary Pope
 Kristina Poppmeier
 Portland Baroque Orchestra
 Portland Brewing Company:
 Tony Adams
 Portland Celebrity Forum
 Portland Children's Museum
 Portland Opera
 Portland Rose Festival Association
 Portland Trailblazers
 Power Plumbing
 Eileen Preston
 The Primary Class & Rose Bardel
 Professional Travel
 Chef Gary Puetz
 Maty & Nasrin Rahatzad
 Rainbow Trout Farms
 Red Lion Hotels & Inns
 Suzanne & David Regan
 REI, Inc.
 Residence Inn by Marriott -
 Portland Downtown
 Chuck & Chris Reynolds
 Thea Rhiannon of Proof Positive
 Susan & Thomas Robinson
 Miriam & Harvey Rogers
 David & Lori Rogoway
 Ed & Nancy Rubovits
 Naveen & Naina Sachdev
 Salem's Enchanted Forest
 Salishan Lodge
 Trudy & John Samples
 Saturday Academy
 Saylor's, Old Country Kitchen
 Scamp's Pet Centers
 Joan Schaller
 Debby Schauffler
 Leslie & Bill Scheible
 David & Judith Schiff
 Schramsberg Vineyards
 Schwabe, Williamson & Wyatt
 Karen Seder
 Elaine Seeley
 Miles & Patsy Seeley

Rick Seifert
 Bret Sellers
 Joyce Shafer
 Rich Sherwood
 Suzette DeCoursey Shoulders
 Bev Shue
 Alice K. Simpson
 Skamania Lodge
 Skip To My Room
 Smith & Bevil Jewelers
 Barbara & Bill Spear
 Mr. & Mrs. R.E. Spiker
 Amy Spiker
 Paula Spooner
 Spring Revels Decorating Committee
 SRG Partnership P.C.
 Bonnie Stanke
 Starbuck's
 Sue Stark
 Peter & Hope Stevens
 Dale & Carol Stewart
 Linda Stewart
 Shelley Stoffer
 Todd & Carrie Stucky
 Sunshine Dairy Foods
 John & Karen Taylor
 Mr. & Mrs. T.D. Taylor
 Steve & Meri Taylor
 David, Nancy & Nicholas TenHulzen
 Tenly Care
 Tenly Properties
 Texas Beef Producers
 Ned & Anne Thanouser
 Susan Thayer
 Dawn Joy Thornton
 Timberline Lodge
 Tire Headquarters
 To Market To Market
 Matti & Majla Totonchy
 Tournament Golf Foundation, Inc.
 Traditional Thailand Massage
 U.S. Outdoor Store
 USTravel
 Kris Van Hatcher
 Viking Industries
 Irene Vlach
 Jon & Barbara von Behren
 John & Fran von Schlegell
 Doug and Joyce Wachsmith
 Patty Walhood
 Meredith Wall
 Mary Warinner
 Jim & Syd Waskey
 Julia Weitzer
 Robin Weitzer
 West Coast Productions
 Morris & Paula Westlund
 Richard & Jana Westlund
 Whispering Woods
 Doug Whitmore
 Wild Bird Center
 Will Vinton Studios
 Mimi & Charles Williams
 Patty & Steve Williams
 Tom Willing
 Jed & Carla Wilson
 Bob & Jane Winger

Patricia & Dennis Winningstad
 Rachel & Dennis Winningstad
 Mr. Eric Wittmayer
 Virginia Euwer Wolff
 Women's Healthcare Associates, Inc.
 Mark & Leslie Workman
 Susan & Masatoshi Yamanaka
 Kelly Yustin
 Harvey & Louisa Zendt

SENIOR GRADUATION PARTY

The All-Night Drug and Alcohol-Free Graduation Party provides a safe and enjoyable way for our graduates to celebrate this important day. Thanks to everyone whose donations, time, and work made this event a success.

Kris Gregg
 Steve Gregg
 Cindy Hoffman
 Marsha Mehr
 Shelley Stoffer
 Shirley Voelker
 Julie Drinkward
 Margaret Whang
 Suzanne James
 Jerry Pate
 Kathy Pate
 Scott Russell
 Sue Russell
 Leslie Scheible
 Sharon Chapman
 Janice Harwood
 Judy Person
 Corbet Clark
 Gary Crossman
 Christina Meyerhoff
 Karen Talus
 Patsy Seeley
 Lani Thornton
 Mary Ferguson
 Colleen Jannuzzi
 David Jannuzzi
 Brian Harwood
 Jerry de Jaager
 Jon Harvey
 Jack O'Brien
 David Streight
 Dolores Orfanakis
 Nick Orfanakis
 Lenita Sheetz
 Noreen Reali
 Candy Snyder
 Pam Matheson
 Anne Robinson
 Chris Gregg
 Joe Graziano

VOLUNTEERS AND SPECIAL EVENTS

DEVELOPMENT VOLUNTEERS

The following volunteers helped with the School's development efforts over the past year. With phone calls and letters, they gave our development program a personal touch and helped raise a record \$331,340 for The OES Fund.

Tony and Margie Adams
Carla Wilson
Kay Brantley
Betty Hooten
Sally Drinkward
Sue Stark
Craig McClure
Judy Lynch
Rich Sherwood
Chris Cooper
Patty and Steven Williams
Priscilla and John Longfield
Sharon and Henry Hewitt
Janet Maurer
Laurie Turney
Susan Quattrocchi
Jana and Richard Westlund
Kathleen Dodds and Matt Miller
Richard Bambam
Wendy Hamilton
Annie English
Linda Smith
Jackie Lipshutz
Kristina Fields
Pauline Gregory
Janet Trullinger
Elizabeth Trainor
Sharon Barnes
Carrie Stucky
Kathy Bussman
Margaret Kushner
Kathryn Nance
Lee Olsen
Dennis Winningstad
Paul Norman
Paul Farago and Susan Thayer
Cheryl Carrier
Cherie Gregg
Elaine Johnson
Rebecca Hencky
Gayle Collins
Myrtle Rae Greenwood
Syd Waskey
Chuck Reynolds
Bob Winger
Karin Randall
Patti Knollman
Susan Gundle

Sue Findlay
Lynnsly Kollar
Arlene Wittmayer
Sue Russell
Marilyn Lamb
Julie Drinkward
Deb Chessar
Lynn Miller
Mark Workman
Patricia Apperson
Norma Atkins
Sylvia A. Boydston
Jean Bullwinkle
Katharine Campbell
Dan Corona
P. Beresford Daigle
Marjory Day
Daniel Diman
Martha Dorrell
Brent B. Erensel
Gloria Flaherty
Janis Grout
Niki El Krewi
Mary Helen Hansen
Caroline Hargis
Robert S. Holden
Susan L. Howell
Lucy Imano
Miss Ruth Jenkins
Katherine Karafotias
Susie Kasper
Paige Kuni
Jack McCann
Nancy Larsen
Julie Mack
Bill Marshall
Martha Mason
Marion McKean
Mark P. Miller
Marybeth Mitchell
Jane Munly
Sandy Nantt
Margaret L. Newhall
Amaryllis Powell
Meridel J. Prideaux
R. E. Clenton Richardson
Paul R. Schlesinger
Betsy Staples
Kelly Dwyer
Helen Kirschner
Winde Strachen
Tom Tewksbury
Doris Trepp
Marie-Claire Vohnson-Streight
Virginia Euwer Wolff
Nancy Young
Alexandra Zimmer-Harmon
Rhoda Zobrist
Nancy Feldman
Sean Kuni
Pat Karamanos

The Pacific Rim Advisory Council

In 1992, the Pacific Rim Advisory Council was convened for the first time by Headmaster Peter Stevens in Tokyo, Japan. In 1993, OES parents Mr. Chai and Mrs. Ing Sophonpanich graciously hosted the second gathering in Bangkok, Thailand.

Seoul Korea was the site of the 1994 meeting convened in May by OES Trustee and Pacific Rim Council Chair, Peter Bechen, and generously hosted by Dr. Jae Kyu and Mrs. Sun Park. As President of Kyungnam University in Masan, Korea and the Far Eastern Studies Institute in Seoul, Dr. Park arranged Council discussions in an international scholarly environment that was delightfully stimulating.

The purpose of the Council is to offer advice on the long term goals of the School and its role as a

Pacific Rim institution. This year, Peter Bechen and Board President Elisabeth Lyon presented the OES Master Plan, which details the siting of new and renovated facilities on the OES campus into the 21st century. Hamilton Gregg, former Director of the OES boarding program, then discussed "a day in the life of a boarding student."

Boarding is of particular interest to the Council because a number of their own children are current or recently-graduated OES students, and have come to OES from across the USA and around the world. With a growing awareness of global citizenship, the Council views the importance of the boarding component in the implementation of the School's long range plans. Upon his return to Portland, Peter Bechen reported back to the



▲ Members of the 1993-94 Pacific Rim Advisory Council, which represents OES parents, international educators, and business leaders, and whose annual meeting was held in Korea this past year.

VOLUNTEERS AND SPECIAL EVENTS

Trustees of the discussion shared by Council members. The Trustees are very interested in having ongoing discussions in the international community.

The School expresses its grateful appreciation to those families who travelled to Seoul to enjoy friendships, discussions, and a shared vision of OES as an internationally recognized Pacific Rim institution.

Peter and Missy Bechen,
Portland, USA

K.C. Chang, Taipei, Taiwan
Hamilton Gregg, Portland, USA

Peter and Elisabeth Lyon,
Portland, USA

Sue and Scott Nicol, Portland, USA
Gun Bo and Duk Hee Park,
Pusan, Korea

Jae Kyu and Sun Park, Seoul, Korea
Chai and Ing Sophonpanich,
Bangkok, Thailand

Peter and Hope Stevens,
Portland, USA

SUMMERBRIDGE PORTLAND

Summerbridge Portland was founded in the fall of 1992 as a collaborative effort between Oregon Episcopal School and the Catlin Gabel School with the intention of preparing high-potential middle school students for success in rigorous college preparatory high school programs. The program focuses specifically on students who have had limited educational opportunities.

This year, classes began in June with a diverse group of 70 middle school students from 13 Portland public schools and 2 Catholic schools. A talented faculty of 26 high school and college students served as teachers and role models.

The academically stimulating summer sessions emphasize reading, writing, math, critical thinking, and study skills. The program also stresses leadership, heightened self-esteem, and creativity. The summer sessions are complimented by school-year tutoring, counseling, and enrichment to ensure comprehensive support.



▲ A Summerbridge student listens intently.

program. And we wish to extend special recognition to the Meyer Memorial Trust for their strong support and commitment to the program.

The Catlin Gabel School
First Interstate Bank of Oregon
Geraldine R. Dodge Foundation
Meyer Memorial Trust
NIKE, Inc
Oregon Community Foundation:
Sommerville Fund
William Swindells, Sr. Memorial Fund
John and Jane Youell Fund
Stoll Stoll Berne and Lokting, P.C
Summerbridge National
Templeton Foundation
U.S. West Foundation of Oregon
Viking Foundation
Wheeler Foundation



▲ Ed Liu, co-director of Summerbridge and OES faculty member

In addition to preparing middle school students for success in high school, Summerbridge also serves as a training ground for a new generation of teachers. For our young faculty members, Summerbridge is a total immersion into the field of education. Summerbridge Portland is modeled after the original Summerbridge program in San Francisco. At present, there are approximately thirty Summerbridge programs nationwide.

Oregon Episcopal School is grateful to the following donors for supporting this important



▲ Karen Rollins '94 was one of the 26 faculty members working with Summerbridge participants this past year.

HERITAGE

The Heritage Society honors those who provide for OES through their estate planning. For 125 years, OES has benefitted from the long-range planning and vision of thoughtful trustees, alumni, parents, faculty, staff, and friends. The School is grateful to past and present Heritage Society members for their thoughtfulness and generosity, which is instrumental in building the OES endowment, which helps secure our future.

Anonymous	Henry Keller & Eola Richards Keller '12
Mr. & Mrs. Charles A. Adams	W.R. Lake Jr.
Patricia Kendall Apperson JC '48	Dr. Caroline Litzenberger
Mrs. Ned Barclay Ball	Patricia J. Maulbetsch JC '41
The Rev. James T. Boston	Louis H. Paff
David B. Charlton	Mr. & Mrs. John W. Rath
Mr. & Mrs. William S. Findlay	Elizabeth Reeves '32 & JC '35
Anna Pauley Gulley '17	Mrs. Howard Sargent '35
Heather (Joan Bokemeier) '74	Lenita & Michael Scheetz
Bruce & Sherrie Holliday	Miss Irene Soehren
James D. Hutchinson	Lee & Lani Thornton
Marion & Gordon Janney	Mrs. J.A. Warren '33
Miss Marian Jenkins '20	Betty & Jim Wright
Miss Ruth Jenkins '20	Mrs. Margaret Reeves Yick '30 & JC '33
Elizabeth Johnson '69	

OES wishes to acknowledge the thoughtful intentions of the following new member to the Heritage Society.

Mrs. Josephine de Bruin



▲ US students Ashley Berman and senior Larisa Meisenheimer.

PLANNED GIFTS: YOU CAN AFFORD IT!

Each day our telephone and mail bring us solicitations for donations. The volume of requests numbs our senses. Our immediate impulse is to hang up or throw it away. Yet there are causes or organizations which tug at our consciences, those we really embrace and want to support. However, the constant throb of unwanted requests creates negative conditioning. We just say "no!" or think "that's impossible!" without really examining the possibilities. In truth, there are many methods of making charitable gifts, both large and small. With a little coaching on the menu of options, the seemingly impossible can be done.

Writing a check is only one method of making a charitable gift. While simple, it is not necessarily the proper standard by which affordability should be measured if you really want to make a larger gift. The picture has to be more complete. "Non-cash"



▲ *D. Charles Mauritz is an attorney practicing with Davis Wright Tremayne, and is the father of Gwyn Mauritz Walker '87 and Britta Mauritz '94.*

assets such as securities, real estate, works of art, etc. must be included as well as income sources and needs. With these facts available, then your real financial capacity can be measured and the likely sources for making a gift can be identified.

Most larger charitable gifts from individuals are not made in cash. The tax costs and resource reduction may be simply too high to make it worthwhile. Instead, many people resort to various other devices which make use of their "hidden" financial capacity. This capacity is found in their appreciated stock or real estate which they believe should not be

sold because of the income tax consequences or because of the reduction or loss of income it produces. Charitable gifts can unlock this dormant investment and income potential without adverse consequences. In fact, income and financial security can be greatly enhanced by these efforts while creating a sizeable benefit for a charitable cause at the same time.

One of the devices commonly used to take advantage of hidden financial capacity is the Charitable Remainder Trust. It is based on a very simple premise: you transfer property to a trust, retaining an income interest for a specific term, and your charity receives the balance of assets when the term ends. The tax laws grant a very favorable status to these arrangements, and many first reactions are "it's too good to be true." On the contrary, these arrangements have been around for a long time. They have long ago passed out of the "gimmick" category and into the main stream of estate and financial planning.

The Charitable Remainder Trust begins just like all

other charitable contributions. You first make a transfer of assets. In this case, the transfer is to a trust. The trust recites all of the terms and conditions of the arrangement. It names the beneficiaries and the trustees and defines the relationships of the parties. Many of these terms are required by the tax laws in order to substantiate the charitable nature of the trust, and your entitlement to the charitable deduction.

The amount of the deduction depends on the number of variables you establish in the trust when the transfer is made. The initial variable is the income interest you retain. You must first decide how much income you want and how often it is to be paid. The income rate is expressed as an annual percentage of the value of the trust assets, i.e. 5%, 9%, etc. Income rates you received from the assets prior to transfer are irrelevant. You can set the new annual rate arbitrarily based on your expected needs. The lowest allowable rate is 5%, but there is no maximum rate. You can receive the income month-

PLANNED GIVING

ly, quarterly, semiquarterly or annually. Generally, the charitable reduction goes down as the retained income rate and payment frequency go up.

When the income rate and payment frequency are established, you must then decide who will receive this income. The income payments can be retained for either a fixed number of years or for one or more lifetimes. For instance, you may decide to retain the income payments for a fixed period of 20 years. You may then designate yourself and several successive, alternate beneficiaries to receive it during that term, depending on who is alive at any given time. Another option is to retain the income payments for your entire lifetime. You can also extend the term to include the lifetime of your spouse or of a child or children. Again, the charitable deduction decreases as the length of the retained income term increases (either expressed as a fixed number of years or through the duration of one or more lifetimes).

The last significant variable is the form in which the income payments are determined. You may elect to fix the amount you receive when the initial transfer is made. The same payment amount will then be paid to you throughout the term of the trust. This is an "annuity" trust. The income payment is not affected by subsequent changes in the value of the trust fund. The second format is a variable payment amount. The same income percentage rate is used throughout the term, but the assets of the trust are re-valued at the beginning of each year and the rate applied to the new value. Thus the payment amount will fluctuate with the market and value of the trust assets. This is a "uni-trust." Generally, the deduction is higher for an annuity trust than a uni-trust.

When these variables are established, the charitable deduction can be calculated. This deduction is one of the twin keys the Charitable Remainder Trust utilizes to release dormant investment and income potential. The assets you transfer to the trust are only used to measure the

charitable deduction. They are not necessarily the source of the income interest you retain. Most often, the assets you transfer to the trust are sold. The proceeds are then reinvested more appropriately to produce the income payments to you. The sale may create a gain, but there is not tax because the law attributes the gain to the "tax-exempt" charitable beneficiary, not to you. Thus a principal motivation for creating a Charitable Remainder Trust is to completely escape the tax cost of changing your investments. The trust is the key to a tax-free conversion of low or no income assets into higher income assets or of a single asset into a diversified portfolio of assets.

The second key to release dormant investment and income potential is the charitable deduction itself. The gain on the sale of the assets you transfer to the trust is not taxable, but the income interest you retain is taxable as you receive it over the term of the trust. The charitable deduction is used to offset the tax consequences of these income payments. It can also offset

other income sources you have, too, if the deduction is large enough. The charitable deduction thus creates tax-free income where none existed before.

The amount of the deduction is calculated using actuarial tables furnished by the IRS. As noted above, the deduction amount is directly affected by the characteristics you choose for the retained income interest. Sometimes, the deduction amount is the principal focus in selecting these variables, whereas other situations attribute less significance to the deduction and concentrate on maximizing personal income security. In either case, the amount of charitable deduction which may be used to offset your taxable income is limited to the percentage of your "adjusted gross income." Most commonly, this limit is 20% of adjusted gross income. It is not unusual for the total deduction to exceed this limit. In that case, the tax law allows you to "carry forward" the excess deduction and apply it against your tax-

PLANNED GIVING

able income in the next five years. For example, if your total charitable deduction is \$10,000 and 20% of your adjusted gross income is \$4,000, then you can only use \$4,000 of the deduction this year, but the remaining \$6,000 of the deduction is still available for use in the next succeeding five years to offset taxable income within the 20% limitation.

The financial aspects of the Charitable Remainder Trust reflect your choices in the variables affecting the income interest you retain. Once fixed, these issues are rarely confronted again. On the other hand, the Charitable Remainder Trust is not something you sign and forget. It is, after all, still a trust. It must have a trustee to supervise and execute its affairs. There are many applicable rules and regulations governing the trust administration, but substantial flexibility also exists. Many people turn to their professional advisors to act as trustees, such as banks, accountants and attorneys. Some charitable organizations will even act as trustees of trusts for which they are

at least partially the eventual beneficiary. Community foundations (i.e., the Oregon Community Foundation) make it their business to act as trustees and fund managers for these trusts. Within certain special limitations in place, you can act as your own trustee, too.

The duties of the trustee are not insignificant. They include the proper investment of the funds and the payment of the income interest to you. Annual tax returns and information reports must be prepared and filed. The fees and costs of the trustee or financial management services may be an issue to some people, and each of the alternatives will present different services and efficiencies. The final choice is important since the long term performance of the trust directly affects the ultimate benefit received by the charity. Prudence and experience are key elements in the selection criteria.

The last variable is probably the one that truly provides the impetus for the whole arrangement. That is the identity of the charitable beneficiary or beneficiaries. Many trusts are

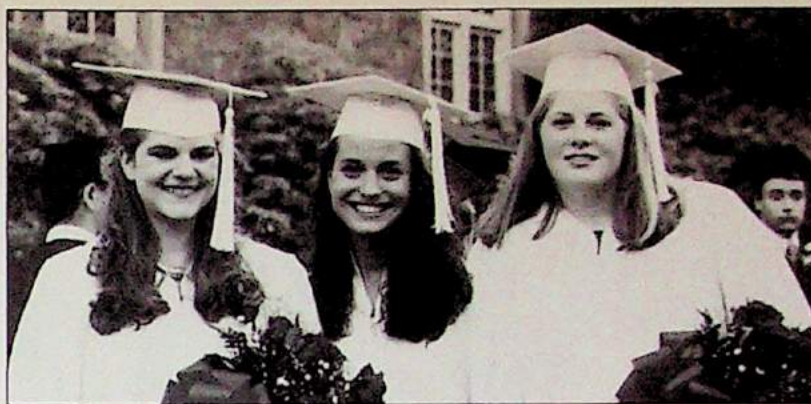
created with specific beneficiaries in mind, but circumstances change. A Charitable Remainder Trust is by its very nature a long term plan. In response to inevitable change, the tax laws permit you to retain the right to change the charitable beneficiary if you choose. So long as all the beneficiaries at all times are qualified charitable institutions, you can make as many changes as you wish. Only the list in effect at the conclusion of the trust term determines which charities actually receive the remaining trust assets.

The income interest characteristics and management choices cover quite a broad spectrum of variables. Only one attribute is ironclad from the inception of the trust. A Charitable Remainder Trust is irrevocable. This means the arrangement is permanent until its course is fully completed. The characteristics of the income interest cannot be changed. The distribution of the balance of the assets to charities at the conclusion of the trust term cannot be changed. Areas of flexibility do exist, but second thoughts after the trust is in place cannot alter the

trust or the ultimate fulfillment of its purpose.

Many details are involved in the decision to pursue a larger charitable gift. The first rule is the most obvious, but also the most difficult: take off the blinders. They only confine your vision of the available resources for a gift. The second rule is equally compelling: consult competent professionals. They are the only ones who can give you a complete explanation of all the options open to you and the many variables affecting each one. No description of planned charitable giving alternatives is complete without a thorough review of a Charitable Remainder Trust. It can provide the means to make a substantial charitable gift. In fact, it can actually increase your income and strengthen your portfolio by diversifying your investments. Happily, the tax laws promote rather than discourage these positive results, and the investment transition is tax-free. With these kinds of benefits potentially available, the issue is not whether to do it, rather how you can afford not to do it!

THE CLASS OF 1994



▲ Shannon Hiller-Webb, Tracy Sheetz and Wendy Siemens gather for a photograph before processing into Trinity for the 1994 commencement.

College Plans

- Katie Adams**
Tulane University
- Joanne Bennington**
Rhodes College
- Jeff Chang**
University of Southern California
- Lillian Choi**
Claremont McKenna
- Todd Crawford**
Carleton
- Michele Duncan**
University of Puget Sound
- Elena Egorova**
Claremont McKenna
- Rachel Frank**
Brown University
- Kyle Freres**
Southern Methodist University
- Tyler Freres**
Southern Methodist University
- Eric Gebbie**
University of St. Andrews (Scotland)
- Alex Guerrero**
Portland State University
- Paul Hearn**
Lawrence University
- Martin Hellhake**
University of San Francisco



▲ Graduates Tyler Freres, Toby Menely, David Moser and Martin Hellhake on the big day.

- Jimmy Herman**
University of California, Los Angeles
- Shannon Hiller-Webb**
Lewis & Clark College
- Takashi Ike**
Washington State University
- Michael Kremkau**
Colorado College
- Scott Kremkau**
University of Redlands
- Ted Laderas**
Whitman College
- Heather Laird**
Stanford University
- Jo-Anne Landry**
Boston College*
- Heather Licini**
University of Colorado, Boulder
- Brian Lin**
Boston University
- Joe Matheson**
University of San Francisco*
- Britta Mauritz**
Gettysburg College
- Toby Menely**
Beloit College
- Chris Michlig**
University of Oregon
- Josh Michtom**
New York University
- Heather Moreland**
Whitman College
- Ken Moriyasu**
University of Oregon
- David Moser**
Seattle University
- Berk Ongan**
University of Oregon
- Heather Patsis**
Villanova University
- Ben Pope**
Lane Community College
- Damien Ritter**
University of San Francisco
- Karen Rollins**
Wellesley College
- Tracy Sheetz**
University of Oregon
- Wendy Siemens**
University of Montana
- Aaron Smith**
Portland State University
- Margaret Spring**
Northwestern University
- David Stanke**
Brown University
- Mikael Sterner**
University of Oregon
- Jennifer Thomas**
University of Oregon
- Kirsten Winchell**
University of Oregon
- Adam Woodward**
University of Southern California
- Retan Wulandari**
Carnegie Mellon University



▲ Yumi Hattori was an acolyte at the 1994 commencement.

* Will defer



▲ OES sixth graders hold class on a section of the proposed site for the new, upgraded Middle School.

The New Middle School: Now All We Need Are the Walls!

For 125 years, thousands of individuals have been touched by their educational experiences at St. Helens Hall, Bishop Dagwell Hall, and Oregon Episcopal School. Not only students, but parents, teachers, staff, alumni, grandparents, and friends have grown and been nurtured within the School's inclusive community.

Mr. Jong-Hyon Chey, chairman of the Sunkyong Group, one of the five largest conglomerates in Korea, recently stated in reference to the future direction of his own business: "We are not awaiting the 21st century, we intend to shape it." How perfectly applicable this statement is to the implementation process of the OES Long Range Plan for the 21st Century, which

is appropriately called OES/21.

The OES Statement of Purpose articulates both the School that we are and the School we are becoming, and OES/21 details the essence of what we seek to accomplish to shape our institution for the 21st century. Like Mr. Chey, the OES Board of Trustees realizes the prudence of its charge for long-range planning and articulated goals.

Wise and careful trustee management during the past decade has allowed the School to achieve financial solidity with no external debt, a well-managed plant with provisions for deferred maintenance, and an enrollment that is both the largest in the School's history (with plentiful wait pools in each division) and the earlier-than-expected realization of our student population goal outlined in OES/21.

Our moment is at hand. We have implemented many of the components of the Long Range Plan, ranging from a growing endowment for faculty professional growth and development to technology components that

include laptop computers for each third, fourth, and fifth grader, and laptop PC's for all sixth graders beginning in the fall of 1995.

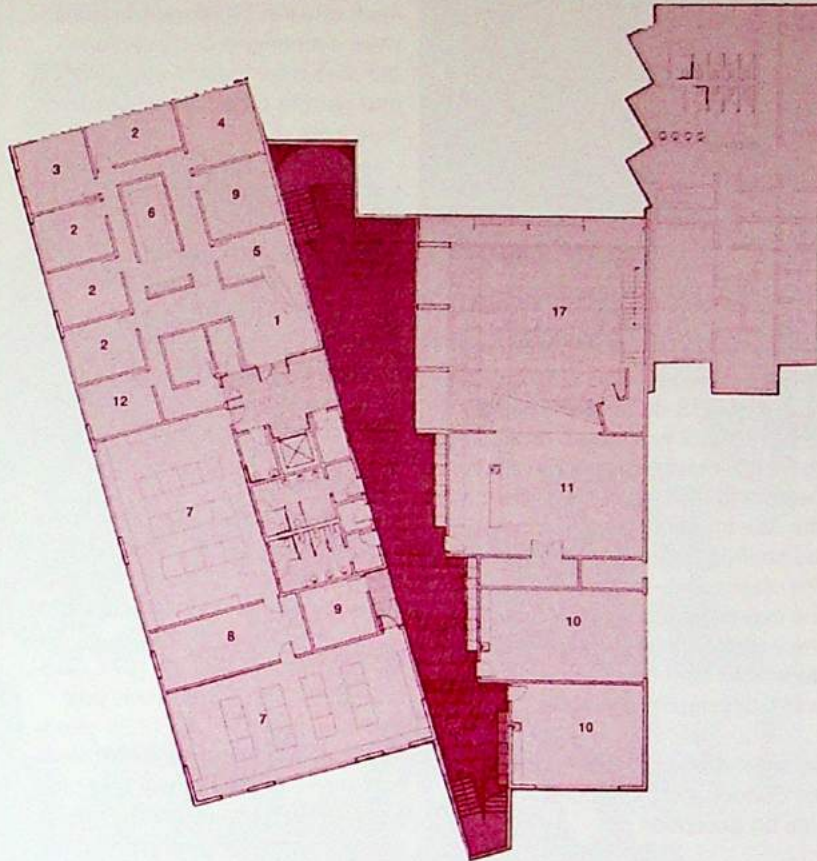
We are now ready to launch the most energetic campus facilities upgrade ever seen in the 125-year-history of the School. The Trustees and Middle School faculty have worked together with the OES Design Review Committee over the past year to develop a facility that meets the programmatic requirements of the Middle School.

The proposed new Middle School building will secure an academically excellent environment for all our current students as well as the thousands of students who follow them into the 21st century. We have a superb Middle School program that is a model of what a truly excellent Middle School should be, and it is racing towards the 21st century! All that is missing is the building that will fulfill the space and programmatic needs of the children who learn within its walls. We need you to help us build it!

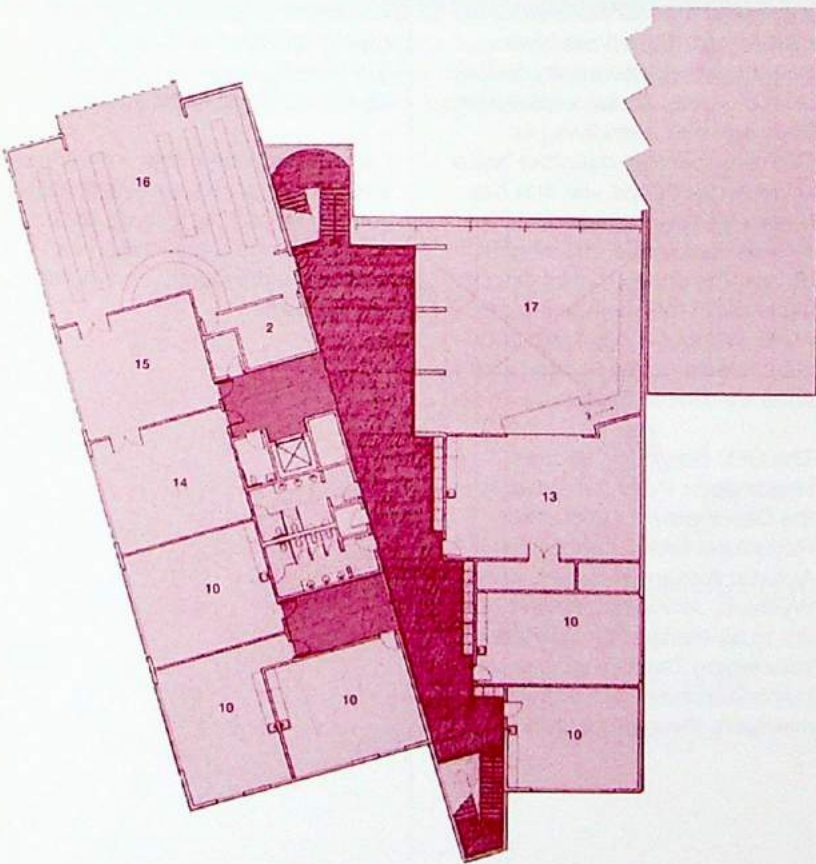
A S T E R P L A N

A U T U M N
1 9 9 4

- LEGEND**
- 1 Reception
 - 2 Office
 - 3 Faculty Lounge
 - 4 Conference
 - 5 Middle School Head
 - 6 Work Area
 - 7 Laboratory
 - 8 Prep./Storage
 - 9 Counseling
 - 10 Classroom
 - 11 Drama
 - 12 School Nurse
 - 17 Commons



The proposed main level of the new Middle School.



- LEGEND**
- 2 Office
 - 4 Conference
 - 10 Classroom
 - 13 Projects
 - 14 Computer Lab
 - 15 Publishing Center
 - 16 Library
 - 17 Commons

The proposed upper level of the new Middle School.

OREGON
EPISCOPAL
SCHOOL

Alumni Association President's Corner



▲ Liza Lilley '74

We celebrate the 125th year of OES during the 1994-95 school year and it promises to be memorable. I feel very lucky beginning my term as President of the Alumni Association during such an exciting time. I hope you have the opportunity to attend some of the events scheduled throughout the year. Many volunteers and dedicated staff have worked long hours developing them.

Summer is always a busy time at the School and this past summer was no exception.

The Alumni Association welcomed its newest members at the Senior Reception held on June 9. The Class of 1994 added 47 members to our ranks, which total approximately 1,800. At the reception I was pleased to introduce Jo-Anne Landry as the 1994 Class Agent. Jo-Anne, who is studying in England this fall, will act as liaison between the School and her classmates.

Class reunions are held each June and this year we celebrated the classes ending in "4" and "9".

I had the opportunity to attend the 1944 St. Helens Hall and SHH Junior College class luncheon. Some classmates had not seen each other in 50 years! Memories were exchanged and everyone did their best to fill in the gaps and update others on events in their lives.

I was touched by the stories about World War II, in particular D-Day, which occurred close to their graduation. One alumna remembers how calmly Bishop Dagwell announced the invasion and how he allayed their fears. Another classmate told of her fiancée who lost his life landing off Holland that same summer.

Most recollections, however, were met with laughter and smiles. I hope in another 30 years my 50th class reunion is just as memorable.

My graduating class of 1974 celebrated its 20th reunion this past summer. Eighteen out of 36 classmates were able to attend at least one event. Brent Erensel and Max Miller Jr. deserve much thanks for organizing the gathering.

Our reunion was that much more joyful with the recent news that our classmates, Tanja Vaselijevic Horvat, was granted entry to the United States. Tanja, a citizen of Saravejo, had been living in Germany with her daughter Ivana since escaping the war that has destroyed her homeland. OES offered Tanja, who is a trained doctor, the position of laboratory assistant in the science department. Without a job, Tanja and Ivana would not have been able to enter the United States.

The OES Board of Directors, Headmaster Peter W. Stevens, the Development Office, the Rosenlund family, Max Miller Jr., Autumn Alexander-Skeen, John Wysham, Jenny Holden and others are to be thanked for their efforts concerning Tanja. Their concern, humanitarianism and actions exemplify the spirit of OES.

This fall and winter also promise to be busy. Many activities are scheduled to celebrate the 125th. An example is the Alumni Lecture Series, which runs throughout the school year in conjunction with the programs of the OES Parent Education Committee. Guest speakers from our alumni ranks are scheduled to speak on a variety of topics.

The Alumni Association extends a special invitation to all alumni, parents and friends of OES to attend the 1994 Founders Day Anniversary Gala. This year we honor Betsy Johnson, Class of 1969, with the Distinguished Alumni Award named in honor of the founder of St. Helens Hall in 1869, Bishop Benjamin Wistar Morris. The award will be presented during the Founders' Day Gala. Chet Orloff, Executive Director of the Oregon Historical Society will be our guest speaker and Gerry Frank will be our Master of Ceremonies. It promises to be an entertaining evening.

Another anniversary event will be the appearance of actress and UNICEF Goodwill Ambassador Liv Ullmann, on December 8. Ms. Ullmann will speak on "Making the World A Better Place for Our Children," a very appropriate topic for the OES community.

I am excited about this anniversary and I hope you are too! As always, your ideas and comments about how the Alumni Association can best serve the alumni community are welcome.

THE OES STUDENT STORE



▲ OES students and their families love the new Student Store! Pictured here are some of the happy shoppers: Jana Westlund and her children, John, David, and Lauren; Jennifer, Christina, and Elizabeth Workman; Ian Rogers and Michael Gundle.

*From Blankets to Windssocks
We Have What You Need*



Store Hours: Monday, Wednesday and Friday
7:30 - 9:30 a.m.
2:00 - 3:30 p.m.

Telephone: (503) 246-7771 ext. 170

I N S I D E !

Opening Day Kicks Off
the 125th!.....4

A HISTORICAL VIEW OF OREGON EPISCOPAL SCHOOL

Academics and Educators.....	8
Spiritual Traditions.....	12
Extracurricular Antics and Activities.....	14
Lasting Alliances.....	18
Boarding Life.....	22

125 Years of Loyalty:
The Reynolds Family.....26

The Mustard Seed
Annual Report of Giving.....29

Planned Gifts: You Can Afford It!.....56

Now All We Need Are the Walls!
The Master Plan and
the New Middle School.....60

President's Corner.....62



▲ *The entire student body, faculty, and staff of St. Helens Hall gather in front of the School in 1890, the last year spent at the original site where Portland's City Hall now stands. The founder of the School, Bishop Benjamin Wistar Morris, and his sisters Mary, Lydia and Clementine Rodney are in the center.*

THE OES Belltower

OREGON EPISCOPAL SCHOOL
6300 S.W. Nicol Road
Portland, Oregon 97223-7566

ADDRESS CORRECTION REQUESTED

Non-Profit
Organization
U.S. Postage
PAID
Permit No. 334
Portland, OR

Printed on recycled paper with vegetable-based inks.
Please recycle.